

WATER WAGONS



'96 CAT 613C



'96 CAT 613C



'88 CAT D350C

#159 1996 CATERPILLAR Model 613C Off Road Water Wagon, s/n 8LJ01339, powered by Cat 3116 diesel engine and 6 speed transmission, equipped with 4,500 gallon drop tank, (2) rear spray heads, front water cannon and hose reel, heat and air conditioning, and 23.5R25 tires. In good to very good condition with excellent tires. (West Chester Machinery)

#220 1988 CATERPILLAR Model D350C, 6x6 Articulated Water Wagon, s/n 8XC00286, powered by Cat 6 cylinder diesel engine and 6 speed powershift transmission, equipped with 6,000 gallon water body, water cannon, (2) rear air actuated spray heads, , hose reel, Klein cannon controls, hydraulic pump, heated cab, and 26.5R25 tires. In good condition with good tires

WATER TRUCKS

#145 2004 FREIGHTLINER Model FL80, 6x6 Water Truck, powered by Cat C-7, 300HP diesel engine and Eaton Fuller 10 speed transmission, equipped with 5,000 gallon steel water tank, (2) front, (2) rear and (2) side air actuated spray heads, front mounted water cannon, air actuated electric turret, PTO driven pump, 1"x50' hose reel, 40,000# rears, 18,000# front axle, double frame, fiberglass coupling boxes, top mounted hose tubes, aluminum disc wheels, air conditioning, cruise control, and 425/65R22.5 tires. In very good condition with good to very good tires. (West Chester Machinery)

#173 1999 KENWORTH Model T300 Tandem Axle Water Truck, powered by Cat 3126, 300HP diesel engine and Eaton Fuller 8LL (10) speed transmission, equipped with Rosco 4,000 gallon steel water tank, (2) front and (2) rear and (1) side air actuated spray heads, 1"x50' hose reel, 52,000# GVW, air ride suspension, air conditioning, cruise control, heated mirrors, and 11R22.5 tires. In good condition with good tires. (West Chester Machinery)



'05 FREIGHTLINER



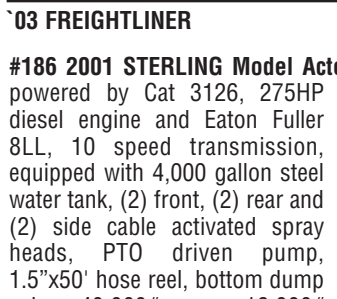
'05 FREIGHTLINER

#180 2005 FREIGHTLINER Model M2 Tandem Axle Water Truck, powered by Cat C-7, 300HP diesel engine and Eaton Fuller 8LL, 10 speed transmission, equipped with 4,000 gallon steel water tank, (2) front, (2) rear and (1) side air actuated spray heads, 1.5"x50' hose reel, 40,000# rears, 18,000# front axle, Hendrickson rubber block suspension, double frame, aluminum disc wheels, air conditioning, cruise control, and 315/80R22.5 front and 11R22.5 rear tires. In very good condition with very good tires. (West Chester Machinery)

#144 2006 CHEVROLET Model C7500 Single Axle Water Truck, powered by Cat C-7, 207HP diesel engine and 6 speed transmission, equipped with Klein 2,000 gallon steel water tank, (2) front, (2) rear and (1) side air actuated spray heads, PTO driven pump, 1"x50' hose reel, 25,950# GVW, air conditioning, and 11R22.5 tires. In very good condition with good tires. (West Chester Machinery)

#133 2003 FREIGHTLINER Model FL80 Tandem Axle Water Truck, powered by Cummins 5.9L, 245HP diesel engine and Eaton Fuller 9 speed transmission, equipped with 4,000 gallon steel water tank, 40,000# rears, 14,000# front axle, (2) front, (2) rear and (1) side air actuated spray heads, PTO pump, 1"x50' hose reel, air conditioning, cruise control, and 11R22.5 tires. In good to very good condition with good tires. (West Chester Machinery)

#165 2005 CHEVROLET Model C7500 Single Axle Water Truck, powered by Cat C-7, 207HP diesel engine and 6 speed transmission, equipped with Klein 2,000 gallon steel water tank, (2) front, (2) rear and (1) side air actuated spray heads, PTO driven pump, 1"x50' hose reel, and air conditioning. In good to very good condition with very good tires. (West Chester Machinery)



'03 FREIGHTLINER

#186 2001 STERLING Model Acterra 8500 Tandem Axle Water Truck, powered by Cat 3126, 275HP diesel engine and Eaton Fuller 8LL, 10 speed transmission, equipped with 4,000 gallon steel water tank, (2) front, (2) rear and (2) side cable activated spray heads, PTO driven pump, 1.5"x50' hose reel, bottom dump valve, 40,000# rears, 18,000# front axle, double frame, and 385/65R22.5 tires. In good condition with good tires. (West Chester Machinery)



'01 STERLING

#158 2005 FORD Model F-750 Single Axle Water Truck, powered by Cummins 5.9L, 215HP diesel engine and 6 speed transmission, equipped with United 2,000 gallon steel water tank, (2) front, (2) rear and (1) side air actuated spray heads, PTO driven pump, 1"x50' hose reel, air conditioning, and 11R22.5 tires. In good condition with good tires. (West Chester Machinery)

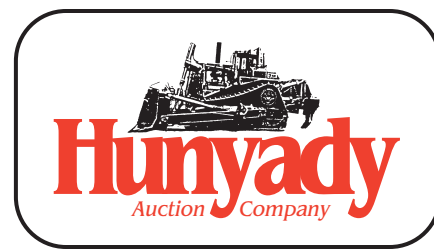
#103 2002 GMC Model Topkick Single Axle Water Truck, powered by Cat 3116, 190HP diesel engine and 5 speed transmission, equipped with 2,000 gallon steel water tank, (2) front, (2) rear and (1) side air actuated spray heads, PTO driven pump, 1"x50' hose reel, 26,000# GVW, air conditioning, and 235/80R22.5 tires. In very good condition with very good tires. (West Chester Machinery)

#141 1994 FORD Model F-800 Water Truck, powered by Cummins 5.9L diesel engine and Eaton Fuller 10 speed transmission, equipped with 2,000 gallon Low Pro steel water tank, (2) front and (2) rear air actuated spray heads, 1"x50' hose reel, PTO driven pump, 29,000# GVW, air ride suspension, air conditioning, and 10.00R20 tires. In good condition with good tires. (West Chester Machinery)

'92 INTERNATIONAL



#139 1992 INTERNATIONAL Model 4900 Single Axle Water Truck, powered by International DT466, 210HP diesel engine and 6 speed transmission, equipped with 2,000 gallon steel water tank, (2) rear and (2) front air actuated spray heads, 1"x50' hose reel, Berkley PTO pump, double frame, air conditioning, and 10.00R20 tires. In good condition with good tires. (West Chester Machinery)



1440 Cowpath Rd. • Hatfield, PA 19440 • 800-233-6898 • Fax: 215-361-9212

NOTICE: Mr. Russ Duryea, the owner of R&R Construction Company, has decided to liquidate equipment which is surplus to their present needs. Also included are major fleet reductions from West Chester Machinery and Speicher Excavating. Everything in the auction will sell to the highest bidder regardless of price!

LOCATION: The auction will be held at R&R's yard facility at 105-B Parker Road, Chester, New Jersey 07930.

TERMS: Payment in full is required on sale day by cash, certified funds, or check with a bank letter of guarantee. Sample letter of guarantee: "We hereby guarantee the payment of our customer _____ written on his account up to \$ _____ dollars for purchases at your auction sale on July 23, 2009." All guaranteed checks should be made payable to Hunyady Auction Co. **Never A Buyer's Premium!**

FINANCING: Financing is available; please contact Susan at Hunyady Auction Company for complete details.

SALES TAX: Since this contractor is selling items not normally sold in the course of his business, the State of New Jersey considers this an isolated sale and does not require the auction company to collect sales tax.

INSPECTION: Items will be available for inspection beginning one week prior to the auction from 8:00 a.m. until 5:00 p.m., with the exception of Saturday and Sunday, July 18 and 19, at which time the site will be closed. Items may also be inspected sale day morning from 7:00 a.m until 9:00 a.m.

REMOVAL: After complete payment, all sale items may be removed on sale day as long as the removal activity is not disruptive to the sale and only until 5:00 p.m. Items may also be removed Friday, July 24, and Monday, July 27 thru Thursday, July 30, 2009 from 8:00 a.m. until 5:00 p.m. All items must be removed no later than Thursday, July 30, 2009 at 5:00 p.m.

SALE SITE DIRECTIONS: From Interstate 80: Take Exit 27A and proceed to US Route 206 South (towards Somerville). Once on Route 206 South, proceed (7.7) miles to traffic light at West Main Street/Route 513 and turn right. Proceed on Route 513 South approx. (1.3) miles (watch for signs to Hacklebarney State Park) and turn left. Immediately turn right onto Parker Road and proceed (1.2) miles to sale site on left.

FROM INTERSTATE 78: Take Interstate 287 North towards Morristown and proceed to Exit 22B, following signs for Route 206 North. Proceed on Route 206 North approx. (10) miles and turn left at traffic light onto West Main Street/Route 513. Take Route 513 South approx. (1.3) miles (watch for signs to Hacklebarney State Park) and turn left. Immediately turn right onto Parker Road and proceed (1.2) miles to sale site on left.

AIRPORT INFORMATION: The area is serviced commercially through Newark Liberty International Airport and Lehigh Valley International Airport, as well as privately through Morristown Municipal Airport. Rental cars are available at all locations.

MOTEL INFORMATION: All hotels are located off of I-80. Quality Inn (973) 347-5100 • Comfort Inn (973) 448-7500 • Residence Inn Marriott (973) 691-1720 • Wyndham Garden Hotel (973) 448-1100

PA AUCTION LICENSE NO.: AY000281

SALE SITE PHONE NUMBER: (908) 879-4291 • SALE SITE FAX NUMBER: (908) 879-7658

DUMP TRUCKS



'98 DIAMOND REO

#45 1998 DIAMOND REO Model C12064DB Tandem Axle Dump Truck (Glider Kit), powered by Cat 3406B, 350HP diesel engine and Fuller RTOF1408, 8 speed transmission with lo and lo-lo, equipped with 58,000# rears, 16,360# front axle, Beau-Roc HTT-14-54-80, 14' steel dump body with chute, 2-way gate, electric tarp and cab protector, 2-position Jake brake, air conditioning, and 11.00R24 tires. In good condition with good tires.

STACKING CONVEYOR AND MISCELLANEOUS CONTRACTORS TOOLS

2005 NORTHSTAR 36"x60' Hydraulic Stacking Conveyor • STONE 65CM Cement Mixer, Briggs & Stratton gas engine • STONE 65M Cement Mixer, Honda 8HP gas engine • (3) 3" Gas Powered Trash Pumps • (3) Gas Powered Plate Compactors • Test Pump, powered by 1HP electric motor • (2) MIKASA MT-85HS Gas Powered Foot Compactors



ABSOLUTE AUCTION
SURPLUS EQUIPMENT
Thursday, July 23, 2009 - 9:00 AM



'04 JOHN DEERE 600CLC

R&R CONSTRUCTION CO., INC.
WEST CHESTER MACHINERY • SPEICHER EXCAVATING
Chester, New Jersey (Morristown Area)



'04 CAT 735



'04 FREIGHTLINER 6X6



CAT D8'S



1440 COWPATH RD. • HATFIELD, PA 19440
215/361-9099 • Fax: 215/361-9212



PRE-SORTED
FIRST CLASS MAIL
US POSTAGE
PAID
HAVERTOWN, PA
PERMIT #45

HYDRAULIC EXCAVATORS AND ATTACHMENTS



'04 JOHN DEERE 600CLC

#377 2004 JOHN DEERE Model 600CLC Hydraulic Excavator, s/n FF600CX951054, powered by Isuzu 415HP diesel engine and hydraulic drive, equipped with 13'6" dipper stick, 64" digging bucket, JRB hydraulic quick disconnect, heat and air conditioning, 18"8" crawlers, and 36" TBG pads. In good condition with good undercarriage. *(Purchased New)*



'03 CAT 345BL

#343 2003 CATERPILLAR Model 345BL Series II Hydraulic Excavator, s/n AGS01759, powered by Cat 3176, 439HP diesel engine and hydraulic drive, equipped with 12'6" dipper stick, 48" digging bucket, hydraulic quick disconnect, auxiliary hydraulics, light package, 17'8" crawlers, and 35-1/2" TBG pads. In good condition with good undercarriage. *(Hammer Not Included) (Purchased New)*



'03 CAT 345B

#371 2003 CATERPILLAR Model 345BL Series II Hydraulic Excavator, s/n CAT0345BVAGS01757, powered by Cat 3176, 439HP diesel engine and hydraulic drive, equipped with 12'6" dipper stick, 38" digging bucket with side cutters, Cat manual quick disconnect, hydraulic plumbing, auxiliary hydraulics, heat and air conditioning, light package, 17'9" crawlers, and 36" TBG pads. In good condition with good undercarriage. *(Purchased New)*



'02 CAT 330CL

#11 2002 CATERPILLAR Model 330CL Hydraulic Excavator, s/n CAT0330CVDKY00301, powered by Cat C-9, 247HP diesel engine and hydraulic drive, equipped with 10'6" dipper stick, 50" digging bucket with side cutters, 16'6" crawlers, and 34" TBG pads. In good condition with good undercarriage. *(Speicher Excavating) (Purchased New)*



'02 CAT 325CL

#40 2002 CATERPILLAR Model 325CL Hydraulic Excavator, s/n CAT0325CCBFE00435, powered by Cat 3126, 309HP diesel engine and hydraulic drive, equipped with 10'6" dipper stick, Geith 44" digging bucket with side cutters, 15'3" crawlers, and 32" TBG pads. In good condition with good undercarriage. *(Speicher Excavating)*



'98 CAT 325BL

#19 1998 CATERPILLAR Model 325BL Hydraulic Excavator, s/n 2JR02112, powered by Cat 3116, 168HP diesel engine and hydraulic drive, equipped with 10'6" dipper stick, 45" digging bucket with side cutters, Balderson quick disconnect, roof cab protector, light package, air conditioning, Cat AM/FM radio, 15'4" crawlers, and 28" TBG pads. In good condition with good undercarriage. *(Speicher Excavating) (Purchased New)*



'04 CAT 315CL

#43 2004 CATERPILLAR Model 315CL Hydraulic Excavator, s/n CAT0315CECJC00842, powered by 6 cylinder diesel engine and hydraulic drive, equipped with 8'6" dipper stick, Geith 36" digging bucket with side cutters, hydraulic beyond, air conditioning, AM/FM radio, 13' crawlers, and 24" TBG pads. In good condition with good undercarriage. *(Speicher Excavating) (Purchased New)*



'94 CAT 322L

#335 2002 KOMATSU Model PC340LC-7K Galeo Hydraulic Excavator, s/n K40061, powered by Komatsu 254HP diesel engine and hydraulic drive, equipped with 10'6" dipper stick, 42" digging bucket, heat and air conditioning, light package, 16'4" crawlers, and 32" TBG pads. In good condition with good undercarriage. *(Purchased New)*



'99 CAT 315

#264 1994 CATERPILLAR Model 322L Hydraulic Excavator, s/n 9RL00344, powered by Cat 3116 diesel engine and hydraulic drive, equipped with 9'10" dipper stick, 40" digging bucket, quick coupler, hydraulic beyond, 15'2" crawlers, and 32" TBG pads. In good condition with good undercarriage.



'91 CAT 225DLC

#307 1999 CATERPILLAR Model 315 Hydraulic Excavator, s/n 3AW01852, powered by Cat 3046 diesel engine and hydraulic drive, equipped with 8'6" dipper stick, 32" digging bucket with side cutters, 13' crawlers, and 24" SBG pads. In good condition with good undercarriage. *(Thumb NOT IN SALE)*



'87 CAT 225B

#280 1998 HITACHI Model EX200LC-5 Hydraulic Excavator, s/n 14MP086510, powered by Isuzu 6 cylinder diesel engine and hydraulic drive, equipped with 9'6" dipper stick, 40" digging bucket, heat and air conditioning, light package, 14'7" crawlers, and 28" TBG pads. In good condition with good undercarriage.

#111 1991 CATERPILLAR Model 225D LC Hydraulic Excavator, s/n 2SJ00883, powered by Cat 3208 diesel engine and hydraulic drive, equipped with 10' dipper stick, 34" digging bucket, hydraulic plate compactor, auxiliary hydraulics, light package, 14'6" crawlers, and 30" TBG pads. In good condition with good undercarriage.

#391 1987 CATERPILLAR Model 225B Hydraulic Excavator, s/n 2ZD00662, powered by Cat 3208 diesel engine and hydraulic drive, equipped with 10' dipper stick, 34" digging bucket, auxiliary hydraulics, heat, 14'7" crawlers, and 24" TBG pads. In good condition with good undercarriage. **CATERPILLAR H140 Hydraulic Demolition Hammer (Speicher Excavating) (Purchased New)** • **TRAMAC TR31 Hydraulic Plate Compactor** • **STANLEY MB2500 Hydraulic Plate Compactor** **DIGGING BUCKETS:** Cat 345/350 = 70" • Cat 225 = 42" & 34" • Cat 315 = 36" • JD 270 = 30" • 34"

#101 2004 CATERPILLAR Model 735, 6x6 End Dump, s/n CAT00735PAWR00751, powered by Cat 3406E, 336HP diesel engine and automatic transmission, equipped with lined and heated body, supplemental steering, engine brakes, heat and air conditioning, passenger seat, and 26.5R25 tires. In good condition with good tires. *(Purchased New)*



'03 CAT 735

#347 2003 CATERPILLAR Model 735, 6x6 End Dump, s/n AWR00496, powered by Cat 3406E diesel engine and 4 speed automatic transmission, equipped with lined and heated body, supplemental steering, engine brakes, companion seat, air conditioning, light package, and 26.5R25 tires. In good condition with good tires. *(Purchased New)*



(2) '00 CAT D350E'S

#319 2000 CATERPILLAR Model D350E Series II, 6x6 End Dump, s/n 2XW00353, powered by Cat 3406E diesel engine and automatic transmission, equipped with lined and heated body, supplemental steering, retarder, heat and air conditioning, light package, and 26.5R25 tires. In good condition with good tires. *(Purchased New)*

#320 2000 CATERPILLAR Model D350E Series II, 6x6 End Dump, s/n 2XW00380, powered by Cat 3406E diesel engine and automatic transmission, equipped with lined and heated body, retarder, heat and air conditioning, light package, and 26.5R25 tires. In good condition with good tires. *(Purchased New)*



'98 CAT D350E

#35 1998 CATERPILLAR Model D350E, 6x6 End Dump, s/n 9LR00560, powered by Cat 3406C diesel engine and automatic transmission, equipped with air conditioning and 26.5R25 tires. In good condition with good tires. *(Speicher Excavating)*

CRAWLER TRACTORS AND CRAWLER LOADER



'98 CAT D8R

#297 1998 CATERPILLAR Model D8R Crawler Tractor, s/n 7XM03265, powered by Cat 3406 diesel engine and powershift transmission, equipped with semi-U blade with tilt, 3rd valve, ROPS over enclosed cab with heat and air conditioning, drawbar, and 24" SBG pads. In good condition with good undercarriage. *(Purchased New)*



'96 CAT D8R

#239 1996 CATERPILLAR Model D8R Crawler Tractor, s/n 7XM00637, powered by Cat 3406 diesel engine and powershift transmission, equipped with semi-U blade with tilt, 4-barrel single shank ripper, ROPS over enclosed cab with heat and air conditioning, light package, and 26" SBG pads. In good condition with good undercarriage. *(Purchased New)*



'95 CAT D8N

#7 1995 CATERPILLAR Model D8N Crawler Tractor, s/n 5TJ02545, powered by Cat 3406 diesel engine and powershift transmission, equipped with semi-U blade with tilt, differential steering, 3rd valve control, ROPS over enclosed cab, drawbar, air conditioning, Cat AM/FM radio, and 24" SBG pads. In good condition with good undercarriage. *(Speicher Excavating)*



'99 CAT D6M LGP

#266 1992 CATERPILLAR Model D8N Crawler Tractor, s/n 9TC06635, powered by Cat 3406 diesel engine and powershift transmission, equipped with semi-U blade with tilt, ROPS canopy, drawbar, light package, and 26" SBG pads. In good condition with good undercarriage.

#161 1999 CATERPILLAR Model D6M LGP Crawler Tractor, s/n 4JN01825, powered by Cat 3116 diesel engine and push button powershift transmission, equipped with 6-way straight blade, differential steering, ROPS over enclosed cab with heat and air conditioning, light package, drawbar, and 34" SBG pads. In good condition with fair to good undercarriage.

ARTICULATED END DUMPS



'96 CAT D400E

#363 1996 CATERPILLAR Model D400E, 6x6 End Dump, s/n 2YR00375, powered by Cat 3406 diesel engine and automatic transmission, equipped with heated and lined body, engine brake, heat, light package, and 29.5R25 tires. In good condition with good tires.



'96 CAT D25D

#13 1996 CATERPILLAR Model D25D, 4x4 End Dump, s/n 1HK00592, powered by Cat 3306B diesel engine and automatic transmission, equipped with enclosed cab with air conditioning and 26.5R25 tires. In good condition with good tires. *(Speicher Excavating)*

#285 1998 VOLVO Model A35C, 6x6 End Dump, s/n A35CV5045, powered by 6 cylinder diesel engine and automatic transmission, equipped with lined and heated body, retarder, heat, air conditioning, light package, and 26.5R25 tires. In good condition with good tires. *(Purchased New)*

'97 & '98 VOLVO A35C

#281 1997 VOLVO Model A35C, 6x6 End Dump, s/n A35CV4831, powered by 6 cylinder diesel engine and automatic transmission, equipped with lined and heated body, retarder, heat and air conditioning, and 26.5R25 tires. In good condition with good tires. *(Purchased New)*

#228 1992 CATERPILLAR Model D350D, 6x6 End Dump, s/n 9RF00357, powered by Cat 3306B diesel engine and 6 speed powershift transmission, equipped with lined and heated body, retarder, heat, light package, and 26.5R25 tires. In good condition with good front and fair to good rear tires. **Cat 350 Heated End Dump Body**



'94 CAT D6H

#225 1994 CATERPILLAR Model D6H LGP Series II Crawler Tractor, s/n 3YG05910, powered by Cat 3306 diesel engine and powershift transmission, equipped with straight blade with tilt, ROPS canopy, drawbar, and 36" SBG pads. In good condition with fair to good undercarriage.



'98 CAT D4C XL

#5 1998 CATERPILLAR Model D4C XL Series III Crawler Tractor, s/n 1FW00400, powered by Cat 3046, 87HP diesel engine and powershift transmission, equipped with 6-way blade, ROPS canopy, draw hitch, and 18" SBG pads. In good condition with good undercarriage. *(Speicher Excavating) (Purchased New)*



'95 JOHN DEERE 550GLT IV

#4 1995 CATERPILLAR Model D3C Crawler Tractor, s/n 7XL00540, powered by Cat 3046 diesel engine and powershift transmission, equipped with 6-way blade, ROPS canopy, and 25" SBG pads. In good condition with good undercarriage. *(Speicher Excavating) (Purchased New)*



'84 CAT 963 LGP

#275 1997 JOHN DEERE Model 550G LGP Series IV Crawler Tractor, s/n T0550GL827583, powered by John Deere 4045T, 4 cylinder turbo diesel engine and hydrostatic transmission, equipped with 6-way straight blade, ROPS canopy, and drawbar. In good condition with good undercarriage. *(Purchased New)*

#253 1995 JOHN DEERE Model 550GLT Series IV Crawler Tractor, s/n T0550GH810389, powered by John Deere 4 cylinder diesel engine and hydrostatic transmission, equipped with 6-way straight blade, ROPS canopy, light package, drawbar, and 16" SBG pads. In good condition with good undercarriage. *(Purchased New)*

#112 1984 CATERPILLAR Model 963 LGP Crawler Loader, s/n 11Z392, powered by Cat 3304 diesel engine and hydrostatic transmission, equipped with general purpose loader bucket with teeth, 3-shank ripper (with 2 shanks), enclosed ROPS cab, and 22" DBG pads. In fair to good condition with good undercarriage. *(Purchased New)* (2) Drawbars (Cat D8)



'95 CAT COMPACTORS



'91 CAT CS563



'87 I-R SD100D

VIBRATORY COMPACTORS

#298 1995 CATERPILLAR Model CP-563C Vibratory Compactor, s/n 5KN00087, powered by Cat 3116DIT diesel engine and hydrostatic transmission, equipped with 84" padfoot drum, drum drive, drum cleaner, ROPS canopy, and 26.5R25 tires. In good condition with good tires.

#244 1995 CATERPILLAR Model CS563C Vibratory Compactor, s/n 4KN00159, powered by Cat 3116, 138HP diesel engine and hydrostatic transmission, equipped with 84" smooth drum, drum drive, drum cleaners, ROPS canopy, and 23.1-26 tires. In good condition with good tires.

#117 1994 CATERPILLAR Model CS563 Vibratory Compactor, s/n 8XF01154, powered by Cat 3116 diesel engine and hydrostatic transmission, equipped with 84" smooth drum, drum drive, drum cleaners, ROPS canopy, and 23.1-26 tires. In good condition with good tires.

#21 1991 CATERPILLAR Model CS-563 Vibratory Compactor, s/n 8XF00334, powered by Cat 3116 diesel engine and hydrostatic transmission, equipped with 84" smooth drum, drum drive, dual frequency, ROPS canopy, and 23.1x26 tires. In good condition with good tires. *(Speicher Excavating)*

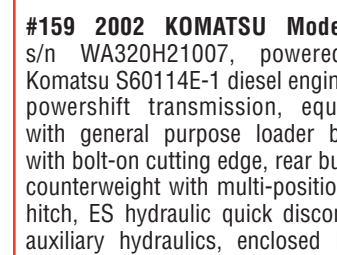
#31 1987 INGERSOLL-RAND Model SD-100D Vibratory Compactor, s/n 5439S, powered by Cummins (Recon 2000) 116HP diesel engine and hydrostatic transmission, equipped with 84" smooth drum, drum drive, variable frequency, ROPS canopy, and 23.1x26 tires. In good condition with good tires. *(Speicher Excavating)*

RUBBER TIRE LOADERS, BACKHOES, AND ATTACHMENTS



'88 CAT 950E

#136 1988 CATERPILLAR Model 950E Rubber Tired Loader, s/n 22Z03486, powered by Cat 3304 diesel engine and powershift transmission, equipped with general purpose loader bucket with bolt-on cutting edge, rear bumper counterweight with multi-position tow hitch, ES hydraulic quick disconnect, auxiliary hydraulics, enclosed ROPS cab with air conditioning and light package, and 23.5R25 tires. In good condition with good tires. *(Purchased New)*



'02 KOMATSU WA320-3H

#159 2002 KOMATSU Model WA320-3H Rubber Tired Loader, s/n WA320H21007, powered by Komatsu S60114E-1 diesel engine and powershift transmission, equipped with general purpose loader bucket with bolt-on cutting edge, rear bumper counterweight with multi-position tow hitch, ES hydraulic quick disconnect, auxiliary hydraulics, enclosed ROPS cab with air conditioning and light package, and 20.5R25 tires. In good condition with good tires.



'97 JOHN DEERE 544G

#130 1997 JOHN DEERE Model 544G Rubber Tired Loader, s/n DW544GD561177, powered by John Deere diesel engine and powershift transmission, equipped with general purpose loader bucket with bolt-on cutting edge, JRB hydraulic quick disconnect, auxiliary hydraulics, enclosed ROPS cab, heat, light package, and 20.5R25 tires. In good condition with good tires.



'89 CAT 936E

#107 1989 CATERPILLAR Model 936E Rubber Tired Loader, s/n 33Z04201, powered by Cat 3304 diesel engine and powershift transmission, equipped with general purpose loader bucket, Balderson hydraulic quick disconnect, auxiliary hydraulics, enclosed ROPS cab, air conditioning, light package, and 20.5R25 tires. In good condition with good to very good front and good rear tires. *(Purchased New)*



'90 JOHN DEERE 310C 4X4

#124 1990 JOHN DEERE Model 310C, 4x4 Tractor Loader Backhoe, s/n T0310CF769128, powered by John Deere diesel engine and shuttle transmission, equipped with general purpose loader bucket with bolt-on cutting edge, Geith 12" digging bucket, ROPS cab, heat, air conditioning, light package, 305/70D16 front and 19.5Lx24 rear tires. In good condition with good tires. *(Purchased New)*



'88 FORD 655A 4X4

#3 1988 FORD Model 655A, 4x4 Tractor Loader Backhoe, s/n C781762, powered by Ford 4 cylinder diesel engine and shuttle transmission, equipped with general purpose loader bucket, 16" digging bucket, and 10.5/80x18 front and 16.9x28 rear tires. In good condition with good tires. *(Speicher Excavating) (Purchased New)*

(4) Hydraulic Side Dump Buckets & (4) Fork Attachments That Fit The Loaders Listed Above (To Be Sold Separately) **Model 200X Grapple Forks,** s/n 187 (Cat 977L) **General Purpose Loader Bucket with teeth** (Cat 980) **24"x32" Hydraulic Plate Compactor** (Wain Roy Quick Disconnect)

FORKLIFT AND PORTABLE AIR COMPRESSORS



CAT V50DSA

#263 1988 CATERPILLAR Model V50DSA, 5,000# Forklift, s/n 5AC01879, powered by Perkins 4 cylinder diesel engine and shuttle transmission, equipped with 188" 3-stage mast, most tilt, side shift, ROPS canopy, light package, 28x9-15 front and 6.00x9 rear tires. In good condition with fair to good tires.

#284 1991 INGERSOLL-RAND Model P250CWFJD, 250CFM Air Compressor, s/n 193175U91364, powered by John Deere diesel engine, equipped with 225/75R15 tires. In good condition with good tires. *(Purchased New)*

#324 1995 INGERSOLL-RAND P100WD, 100CFM Air Compressor, s/n 254656UQF198, powered by Deutz 3 cylinder diesel engine, equipped with 185/80R13 tires. In good condition with good tires.



I-R COMPRESSORS