

Please visit our website at
www.hunyady.com



1440 Cowpath Rd. • Hatfield, PA 19440 • 800-233-6898 • Fax: 215-361-9212

NOTICE: In their continuing efforts to maintain a newer, more current fleet, Maxim Crane Works has decided to offer the following cranes at Sealed Bid Auction. These cranes range from 500 ton all terrain to 230 ton crawler cranes, conventional and hydraulic truck cranes, rough terrain cranes, to 22 ton tower cranes. Don't miss this unique opportunity to bid on a group of well maintained, rental ready cranes! Maxim Crane Works reserves the right to accept to reject any or all bids received.

SPECIAL NOTE: Complete crane specifications, photo library, and maintenance information can be found at our website. Please visit www.hunyady.com for additional information and more! This information is also available via email or fax and may be obtained by contacting the auction company.

LOCATIONS: The equipment will be located at (7) Maxim yard facilities in LaPorte, TX; Wilder, KY; Orlando, FL; Fontana, CA; Philadelphia, PA; Baltimore, MD; and Phoenix, AZ. A few cranes are on rent and will be located on active jobsites. These jobsites will require a Maxim representative to be present during inspection.

INSPECTION: All items will be available for inspection beginning Monday, July 20, 2009 and continue through the bid deadline, with the exception of Saturday and Sunday, July 25 and 26, at which time the sites will be closed. Inspections will be by appointment only. Please contact Hunyady Auction Company at (800) 233-6898 for a bid kit with location and contact numbers for each site.

BID KIT: The bid kit will contain directions to all locations, contact information for each location, and additional information concerning loading and transportation. Bid kits may be obtained by contacting the auction company.

BID DEADLINE: All bids must be received at our office not later than Wednesday, July 29, 2009 5:00PM EDT

BANK LETTER OF GUARANTEE: If prior credit has not been established with Hunyady Auction Company, we will require that all bids submitted to be accompanied by a "Bank Letter of Guarantee" qualifying available funds supporting, at minimum, the total amount of bids submitted.

If financing purchases, we will require a "Letter of Pre-Approval" from financier.

Sample "Letter of Guarantee": "We hereby guarantee available funds for our customer _____, up to the amount of \$ _____ at the time of this writing on the date of _____.

All letters of guarantee must be on bank letterhead and signed by a qualified bank officer.

FINANCING: Financing is available. Please contact Susan at the auction company, (215) 220-2001 for complete details and terms.

NOTIFICATION OF SUCCESSFUL BID: Successful bidders will be notified no later than Thursday, July 30, 2009 by 5:00pm EDT.

TERMS AND CONDITIONS: Successful bidders are required to pay in full, via wire transfer, no later than Wednesday, August 5, 2009 for their purchases. No items will be removed until payment is made in full.

SALES TAX: Sales tax will be collected if applicable, unless a valid exemption is provided. Those cranes with Certificate of Title will not be subject to sales tax, this will be paid at the time of registration in purchaser's home state.

BIDDING PROCESS: Bid packages can be obtained by contacting Hunyady Auction Company and will be sent directly to you via US mail, overnight mail, e-mail (sales@hunyady.com), or fax. Bid packages will contain terms and conditions of the sale, complete equipment descriptions with corresponding lot numbers, and directions. All bid sheets must be signed and delivered to our home office on or before Wednesday, July 29, 2009, by 5:00pm EDT.

REMOVAL: After complete payment is made, all items must be removed by appointment only.

PA AUCTION LICENSE NO.: AY000281

FULL CRANE SPECIFICATIONS, SERVICE RECORDS, PHOTO LIBRARIES AND LOAD CHARTS ARE AVAILABLE. PLEASE VISIT OUR WEBSITE AT WWW.HUNYADY.COM



SEALED BID AUCTION

BID DEADLINE: WEDNESDAY, JULY 29, 2009 - 5:00PM EDT



(1) OF (4) DEMAG 500 TON

(7) LOCATIONS:

LAPORTE, TX; WILDER, KY; ORLANDO, FL; FONTANA, CA; PHILADELPHIA, PA; BALTIMORE, MD; PHOENIX, AZ



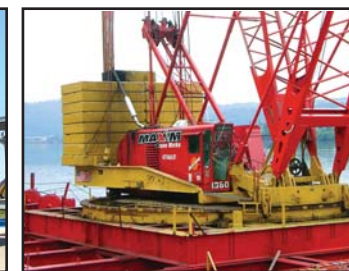
1440 COWPATH RD. • HATFIELD, PA 19440
215/361-9099 • Fax: 215/361-9212



(1) OF (3) GROVE RT9100 100 TON



MANITOWOC 4100W II 230 TON



MANITOWOC 4100W WITH RINGER



(1) OF (6) TOWER CRANES

PRE-SORTED
FIRST CLASS MAIL
US POSTAGE
PAID
HAVERTOWN, PA
PERMIT #45



(18) 100 TON TO 500 TON ALL TERRAIN CRANES

(18) 100 TON TO 500 TON ALL TERRAIN CRANES

1998 DEMAG, 500 TON ALL TERRAIN CRANE



'98 DEMAG AC1300 500 TON

1998 DEMAG, 500 TON ALL TERRAIN CRANE



'98 DEMAG AC400/1300 500 TON



#421 1998 DEMAG Model AC400/AC1300, 500 Ton All Terrain Crane, s/n 79058, powered by Mercedes 366LA diesel engine, equipped with 49'-190' 5-section hydraulic boom, SuperLift package, 9-piece 256' luffing/177' fixed jib, main and auxiliary hoists, Demag PDC350 LMI system, 14-piece 269,000# rear removable counterweight, hook block, mounted on Demag 14x6x12 carrier, powered by Mercedes 442LA diesel engine and 8 speed transmission, equipped with (2) side swing out outriggers, (2) rear hydraulic outriggers, and 17.5R25 tires. In good condition with very good and fair tires. (Wilder, KY)

1998 DEMAG, 500 TON ALL TERRAIN CRANE



'98 DEMAG AC1300 500 TON

#1858 1998 DEMAG Model AC1300, 500 Ton All Terrain Crane, s/n 79047, powered by Mercedes 366-901 diesel engine, equipped with 49'-190' 5-section hydraulic boom, SuperLift package, 9-piece 256' luffing/177' fixed jib, main and auxiliary hoists, Demag PDC350 LMI system, 14-piece 269,000# rear removable counterweight, hook block, mounted on Demag 14x6x12 carrier with booster axle, powered by Mercedes 442LA diesel engine and 8 speed transmission, equipped with (2) side swing out outriggers and (2) rear hydraulic outriggers, and 17.5R25 tires. In good condition with good tires. (Fontana, CA)

2000 KALYN-SIEBERT TANDEM AXLE BOOM LAUNCHER TRAILER



'00 KALYN-SIEBERT BOOM LAUNCHER

#6591 2000 KALYN-SIEBERT Model KDP-4-70 Tandem Axle Boom Launcher Trailer, VIN# 5DDKM5842Y1000670, equipped with hydraulic boom lift. In good condition with good tires. (Fontana, CA)

1996 LIEBHERR, 300 TON ALL TERRAIN CRANE



'96 LIEBHERR LTM1225 300 TON

#1601 1996 LIEBHERR Model LTM1225, 300 Ton All Terrain Crane, s/n 0022872, powered by Liebherr D916 diesel engine, equipped with 50'-197' 5-section hydraulic boom, 46'-138' lattice jib, main and auxiliary hoist, Liebherr integrated LMI system, 176,400# rear removable counterweight, Liebherr 125 ton 3-sheave sister hook block, Liebherr 12x6x10 carrier, powered by Liebherr D9408T1 diesel engine and automatic transmission, equipped with (4) hydraulic outriggers, and 20.5R25 tires. In good condition with good to very good tires. Equipped with Boom Dolly. (LaPorte, TX)

1997 LIEBHERR, 225 TON ALL TERRAIN CRANE



'97 LIEBHERR LTM1160-2 225 TON



#1714 1997 LIEBHERR Model LTM1160/2, 225 Ton All Terrain Crane, s/n 0023284, powered by Liebherr D9224-T1-E82 diesel engine, equipped with 43'-203' 6-section hydraulic boom, 40'-118' folding swing-away jib with inserts, main and auxiliary hoists, LMI system, 5-piece 110,000# rear removable counterweight, mounted on Liebherr 10x8x10 carrier, powered by Liebherr D9408T1 diesel engine and Allison 5 speed automatic transmission, equipped with (4) hydraulic outriggers and 17.5x25 tiers. In good condition with good tires. Equipped with Tri-Axle Boom Dolly with float kit. (Fontana, CA)

1995 KRUPP, 175 TON ALL TERRAIN CRANE



'95 KRUPP KMK5160/5175 175 TON

#2709 1995 KRUPP Model KMK5160/5175, 175 Ton All Terrain Crane, s/n 51608090, powered by Mercedes OM366LA diesel engine, equipped with 43'-161' 5-section hydraulic boom, 108' lattice jib including 33'-59' swing-away jib and (3) 16' inserts, main and auxiliary hoists, Krupp EKS LMI system, Johnson 100 ton 7-sheave hook block, Miller 200# ball, 7-piece 99,200# rear removable counterweight, mounted on 10x6x8 carrier, powered by Mercedes OM442LA diesel engine and Allison automatic transmission, equipped with (4) hydraulic outriggers and 20.5R25 tires. In good condition with very good tires. Equipped with Tri-Axle Boom Dolly with float kit. (Fontana, CA)

1996 GROVE, 175 TON ALL TERRAIN CRANE



'96 GROVE KMK5160/5175 175 TON

#2672 1996 GROVE Model GMK5160/5175, 175 Ton All Terrain Crane, s/n 51608120, powered by Mercedes OM366A diesel engine, equipped with 43'-161' 5-section hydraulic boom, 141' lattice jib including 33'-59' swing-away jib and (5) 16' inserts, main and auxiliary hoists, Krupp EKS LMI system, 7-piece 99,200# rear removable counterweight, mounted on 10x8x10 carrier, powered by Mercedes OM442LA diesel engine and Allison automatic transmission, equipped with (4) hydraulic outriggers and 20.5R25 tires. In good condition with good to very good tires. Equipped with Tri-Axle Boom Dolly with float kit. (Fontana, CA)

2005 DEMAG, 170 TON ALL TERRAIN CRANE



'05 DEMAG AC140 170 TON

#3116 2005 DEMAG Model AC140, 170 Ton All Terrain Crane, s/n 14129, powered by Daimler-Chrysler OM904LA diesel engine, equipped with 41'-197' 6-section hydraulic boom, 29.9'-108.3' folding swing-away jib, main and auxiliary hoists, Demag 1C-1 LMI system, 86,000# rear removable counterweights, mounted on Demag 10x8x8 carrier, powered by Daimler-Chrysler OM502LA diesel engine and ZF automatic transmission, equipped with (4) hydraulic outriggers and 20.5R25 tires. In good condition with good tires. Equipped with NELSON Model CBC 20S, 9'x8' Tandem Axle Boom Dolly, s/n 4464, equipped with 11R22.5 tires. (Wilder, KY)

2004 DEMAG, 170 TON ALL TERRAIN CRANE



'04 DEMAG AC140 170 TON

#3028 2004 DEMAG Model AC140, 170 Ton All Terrain Crane, s/n 14106, powered by Daimler-Chrysler OM904LA diesel engine, equipped with 41'-197' 6-section hydraulic boom, 29.9'-108.3' folding swing-away jib, main and auxiliary hoists, Demag 1C-1 LMI system, 86,000# rear removable counterweights, mounted on Demag 10x8x8 carrier, powered by Daimler-Chrysler OM502LA diesel engine and ZF automatic transmission, equipped with (4) hydraulic outriggers and 20.5R25 tires. In good condition with fair to good tires. Equipped with 2005 NELSON Model CBC 30WS Tri-Axle Boom Dolly, s/n 1N9G62A3251012931, equipped with 225/70R22.5 tires. (Orlando, FL)

1998 DEMAG, 500 TON ALL TERRAIN CRANE



'98 DEMAG AC1300 500 TON



#2021 1998 DEMAG Model AC1300, 500 Ton All Terrain Crane, s/n 79056, powered by Mercedes 366LA diesel engine, equipped with 49'-190' 5-section hydraulic boom, SuperLift package, 9-piece 256' luffing/177' fixed jib, main and auxiliary hoists, Demag PDC350 LMI system, 14-piece 269,000# rear removable counterweight, 5-sheave sister hook block, mounted on Demag 14x6x12 carrier, powered by Mercedes 442LA diesel engine and 8 speed transmission, equipped with (2) side swing out outriggers and (2) rear hydraulic outriggers, and 17.5R25 tires. In good condition with very good tires. (Philadelphia, PA)

(18) 100 TON TO 500 TON ALL TERRAIN CRANES

1996 LIEBHERR, 165 TON ALL TERRAIN CRANE



'96 LIEBHERR LTM1120 165 TON
#1528 1996 LIEBHERR Model LTM1120, 165 Ton All Terrain Crane, s/n 0022766, powered by Mercedes OM366A diesel engine, equipped with 46'-148' 4-section hydraulic boom, 39'-98' folding swing-away jib with inserts, main and auxiliary hoists, Liebherr integrated LMI system, 4-piece 63,300# rear removable counterweight, 5-sheave sister hook block and ball, mounted on Liebherr 10x6x8 carrier, powered by Mercedes OM442 diesel engine and Allison 5 speed automatic transmission, equipped with (4) hydraulic outriggers, and 16.00R25 tires. In good condition with fair and good tires. Equipped with Boom Dolly. (LaPorte, TX)

1995 DEMAG, 150 TON ALL TERRAIN CRANE



'95 DEMAG AC395 150 TON
#1301 1995 DEMAG Model AC395, 150 Ton All Terrain Crane, s/n 76031, powered by Mercedes OM366 diesel engine, equipped with 43'-197' 6-section hydraulic boom, 30.2'-55.9' folding swing-away jib, main and auxiliary hoist, Demag integrated LMI system, 10-piece 66,100# rear removable counterweight, 5-sheave hook block and ball, mounted on Demag 10x6x8 carrier, powered by Mercedes OM442 diesel engine and Transmatik 14 speed transmission, equipped with (4) hydraulic outriggers, and 17.5R25 tires. In good condition with good tires. Equipped with Tandem Axle Boom Dolly, equipped with 10.00x20 tires. (LaPorte, TX)

1994 KRUPP, 110 TON ALL TERRAIN CRANE



#2489 1994 KRUPP Model KMK5110, 110 Ton All Terrain Crane, s/n 51100105, powered by Mercedes OM366 diesel engine, equipped with 43.5'-165.7' 5-section hydraulic boom, 32.8'-52.5' folding swing-away jib, single hoist, Krupp EKS83 LMI system, 7-piece 34,900# rear removable counterweight, 3-sheave hook block, mounted on 10x8x8 carrier, powered by Mercedes-Benz OM442LA diesel engine and Allison 5 speed automatic transmission, equipped with (4) hydraulic outriggers and 16.00R25 tires. In good condition with good tires. Equipped with Boom Dolly (LaPorte, TX)

'94 KRUPP KMK5110 110 TON



120 TON HYDRAULIC TRUCK CRANE



'96 GROVE TM9120 120 TON

#466 1996 GROVE Model TM9120, 120 Ton Hydraulic Truck Crane, s/n 82905, powered by Cummins 6CTA 8.3L diesel engine, equipped with 42'-130' 4-section hydraulic boom, 33'-58' telescopic lattice swing-away jib, main and auxiliary hoists, PAT DS350GW LMI system, hook block and ball, mounted on Grove 84120G 8x4 carrier, powered by Cummins N-14 diesel engine and Eaton Fuller 8 speed transmission with lo and lo-lo, 2-piece 30,000# counterweight, engine brake, (4) hydraulic outriggers, 445/80R25 front and 385/95R24 rear tires. In good condition with good tires. Equipped with NELSON Model CBG 20S Tandem Axle Boom Dolly, s/n 4863, with 11R22.5 tires. (Wilders, KY)

1993 LIEBHERR, 165 TON ALL TERRAIN CRANE



'93 LIEBHERR LTM1120 165 TON
#809 1993 LIEBHERR Model LTM1120, 165 Ton All Terrain Crane, s/n 0022349, powered by Mercedes OM366A diesel engine, equipped with 46'-148' 4-section hydraulic boom, 39'-79' folding swing-away jib with insert, main and auxiliary hoists, Liccon LMI system, 4-piece 63,000# rear removable counterweight, Liebherr 3-sheave 50 ton hook block and ball, mounted on Liebherr 10x6x8 carrier, powered by Mercedes OM442LA diesel engine and Allison 5 speed automatic transmission, equipped with (4) hydraulic outriggers and 16R25 tires. In good condition with good tires. Equipped with 1994 Shopmade Tandem Axle Boom Dolly, with 11R22.5 tires. (Wilders, KY)

1996 DEMAG, 150 TON ALL TERRAIN CRANE



'96 DEMAG AC395 150 TON
#2808 1996 DEMAG Model AC395, 150 Ton All Terrain Crane, s/n 76065, powered by Mercedes OM366A diesel engine, equipped with 43'-197' 6-section hydraulic boom, 30.2'-55.9' folding swing-away jib, main and auxiliary hoist, integrated LMI system, 10-piece 66,100# rear removable counterweight, single sheave hook block, mounted on Demag 10x6x8 carrier, powered by Mercedes OM442LA diesel engine and ZF Transmatik 14 speed transmission, equipped with (4) hydraulic outriggers, and 16.00R25 tires. In good condition with good tires. (Philadelphia, PA)

1995 DEMAG, 100 TON ALL TERRAIN CRANE



'95 DEMAG AC205 100 TON



#1245 1995 DEMAG Model AC205, 100 Ton All Terrain Crane, s/n 75048, powered by Daimler-Chrysler diesel engine, equipped with 35'8"-164' 6-section hydraulic boom, 30.2'-57.7' folding swing-away jib, single hoist, LMI system, 39,700# rear removable counterweight, mounted on Demag 8x6x6 carrier, powered by Daimler-Benz OM402LA diesel engine and Allison automatic transmission, equipped with (4) hydraulic outriggers and 17.5R25. In good condition with good tires. (Orlando, FL)

1992 LIEBHERR, 165 TON ALL TERRAIN CRANE



'92 LIEBHERR LTM1120 165 TON
#808 1992 LIEBHERR Model LTM1120, 165 Ton All Terrain Crane, s/n 0022308, powered by Mercedes OM366A diesel engine, equipped with 46'-148' 4-section hydraulic boom, 39'-79' folding swing-away jib with insert, main and auxiliary hoists, Liccon LMI system, 4-piece 63,300# rear removable counterweight, single sheave hook block, mounted on Liebherr 10x6x8 carrier, powered by Mercedes OM442LA diesel engine and Allison 5 speed automatic transmission, equipped with (4) hydraulic outriggers and 14.00R25 tires. In good condition with good tires. (Philadelphia, PA)

1995 KRUPP, 150 TON ALL TERRAIN CRANE



'95 KRUPP KMK5150 150 TON
#355 1995 KRUPP Model KMK5150, 150 Ton All Terrain Crane, s/n 51108001, powered by Mercedes OM366A diesel engine, equipped with 46.1'-150.9' 4-section hydraulic boom, 32.8'-105' lattice jib, main and auxiliary hoists, EKS LMI system, 3-piece 46,300# rear removable counterweight, Johnson 5-sheave 80 ton hook block, Crosby ball, mounted on Krupp 10x8x10 carrier, powered by Mercedes 442.141 diesel engine and Allison 5 speed automatic transmission, equipped with (4) hydraulic outriggers and 16.00R25 tires. In good condition with good tires. Equipped with NELSON Model CBC-20 Boom Dolly, s/n 4869, with 11R22.5 tires. (Wilders, KY)

300 TON CONVENTIONAL TRUCK CRANE



'96 AMERICAN 9490 300 TON



#1344 1996 AMERICAN Model 9490, 300 Ton Conventional Truck Crane, s/n 9602AC3672, powered by Cummins 355C diesel engine, equipped with 290' of #92HT pin connected tubular boom (30' butt; (4) 50', (2) 20' & (1) 10' inserts & 10' hammerhead tip), 150' high lift tip (1) 50' light section, (1) 50' transition & (1) 50' tip and mid point section), 40' of #16HL pin connected tubular jib, main and auxiliary hoist, Wylie 250 LMI system, 4-piece 140,000# counterweight, air over hydraulic controls, mounted on Pierce Pacific model PCC-300 12x6 carrier, powered by Cummins N-14-410E diesel engine and Eaton 9 speed transmission with lo and lo-lo, equipped with (4) hydraulic outriggers. (Crane Will Be Offered With 40' of Basic Boom: Inserts, High Lift Tip, and Jib Will Be Offered Separately and As An Entirety) (Phoenix, AZ)

MANITOWOC CRAWLER CRANES, RINGER, AND TOWER ATTACHMENTS

(The Manitowoc 4100 and 4000 Cranes Will Be Offered With Basic Boom and No Jib)
(Participants Will Have The Opportunity To Bid On Additional Boom And Jib As Needed)

1980 MANITOWOC, 230 TON CRAWLER CRANE



#2205 1980 MANITOWOC Model 4100W Series II, 230 Ton Crawler Crane, s/n 41670, powered by Cummins NTA360CBCI diesel engine and (2) Twin Disc torque converters, equipped with 70' of #22 pin-connected angle/tubular boom, main and auxiliary hoists, Vicon air controls, 5-piece 146,400# rear removable counterweight, 2-piece 60,000# carbody counterweight, 26'5" extendable crawlers, and 48" pads. In good condition with good undercarriage. (Galveston, TX Jobsite)

1981 MANITOWOC, 230 TON CRAWLER CRANE



#993 1981 MANITOWOC Model 4100W Series II, 230 Ton Crawler Crane, s/n 41719, powered by Cummins NTA360CBCI diesel engine and (2) Twin Disc torque converters, equipped with 70' of #22 pin-connected angle/tubular boom, main and auxiliary hoists, Vicon air controls, 3-piece 122,400# rear removable counterweight, 26'5" extendable crawlers, and 48" pads. In good condition with good undercarriage. (Machine Only Has Series I Counterweights) (LaPorte, TX)

1996 MANITOWOC, 100 TON CRAWLER CRANE



#1983 1996 MANITOWOC Model 222 West, 100 Ton Crawler Crane, s/n 100-018, powered by Cummins 6CTA-8.3L, 413 series diesel engine and hydraulic pumps, equipped with 140' of #222 pin connected tubular boom, 40' basic, (2) 40' and (1) 20' inserts, 30' of #10 pin connected tubular fixed jib, main and auxiliary hoists, Radio Systems LMI system, EPIC controls, 2-piece 53,000# rear removable counterweight, 3-sheave hook block and ball, 22'5" crawlers, and 36" pads. In good condition with good tires. (Machine To Be Offered With 40' Basic Boom • Inserts and Jib Will Be Offered Separately - Crane Will Also Be Offered With 140' and 30' of Boom As An Entirety) (Orlando, FL)

MANITOWOC 4100W & RINGER ATTACHMENT



MANITOWOC 4100W AND RINGER

#1380 1988 (Remanufactured) MANITOWOC Model 4100W Series II, 230 Ton Crawler Crane, s/n 413198, powered by Cummins NTA360CBCI and (2) Twin Disc torque converters, equipped with 70' of #22 pin connected angle/tubular boom, main and auxiliary hoists, Vicon air controls, CraneSmart LMI system, 3-piece 122,400# rear removable counterweight, 26'6" extendable crawlers, and 48" pads. In good condition with good undercarriage. (Machine Only Has Series I Counterweights) (In Use With Ringer Attachment - Will Be Offered Separately and As An Entirety) (Steubenville, OH Jobsite)

#170a MANITOWOC Model 4100W Series III Ringer Attachment, s/n 10120Z, equipped with 4-piece 36" diameter ring assembly, (4) hydraulic jacks, 275,000# counterweights, and 260' of #27 angle/tubular boom. In good condition. (Ringer In Use With Unit #1380 - Manitowoc 4100W, s/n 413198 - Will Be Offered Separately and As An Entirety) (Steubenville, OH Jobsite)

1993 MANITOWOC, 175 TON CRAWLER CRANE



'93 MANITOWOC 4000W 175 TON

#186 1993 (Remanufactured) MANITOWOC Model 4000W, 175 Ton Crawler Crane, s/n 403016, powered by Cummins NTA360CBCI and (2) Twin Disc torque converters, equipped with 70' of #22 pin-connected angle/tubular boom, main and auxiliary hoists, Vicon air controls, 3-piece 104,400# rear removable counterweight, 5-sheave hook block, anti-2 block device, 24' extendable crawlers, and 48" pads. In good condition with good undercarriage. (Baltimore, MD)

#180A MANITOWOC Model 4000W Ringer Attachment, s/n 1027, equipped with 4-piece 36" diameter ring assembly. (Not Complete) (Wilders, KY)

(6) MANITOWOC Model 4000 Tower Assemblies, s/n 13038, 13206, 13057, 13219, 13227, and 13030, equipped with tower cap, butt sections, (2) 40' inserts, head section, and basic back stay pendants.

130 TON HYDRAULIC ROUGH TERRAIN CRANES

2001 GROVE MODEL RT9100



'01 GROVE RT9100 100 TON

#2768 2001 GROVE Model RT9100, 100 Ton Hydraulic Rough Terrain Crane, s/n 221713, powered by Cummins 6CTA-260 diesel engine ('06 reconditioned) and 3 speed powershift transmission, equipped with 36'-114' 4-section hydraulic boom, 33'-58' telescopic swing-away jib, Grove H030B-26G main and auxiliary hoists, PAT DS350 LMI system, 8-sheave hook block and ball, (4) hydraulic outriggers, and 33.25x35 tires. In good condition with good tires. (LaPorte, TX)



#2913 1999 GROVE Model RT9100, 100 Ton Hydraulic Rough Terrain Crane, s/n 220247, powered by Cummins 6 cylinder diesel engine and 3-speed powershift transmission, equipped with 36'-114' 4-section hydraulic boom, 33'-58' telescopic swing-away jib, Grove H030B-26G main and auxiliary hoists, PAT DS350 LMI system, 7-sheave hook block and ball, (4) hydraulic outriggers, and 33.25x35 tires. In good condition with good tires. (LaPorte, TX)

#2914 1997 GROVE Model RT9100, 100 Ton Hydraulic Rough Terrain Crane, s/n 84859, powered by Cummins 6 cylinder diesel engine and 3-speed powershift transmission, equipped with 36'-114' 4-section hydraulic boom, 33'-58' telescopic swing-away jib, Grove H030B-26G main and auxiliary hoists, PAT DS350GW LMI system, 7-sheave hook block and ball, (4) hydraulic outriggers, and 33.25x35 tires. In good condition with good tires. (LaPorte, TX)

(6) 13.5 TON TO 22 TON TOWER CRANES

1998 PEINER 22 TON HAMMERHEAD TOWER CRANE



'98 PEINER SK405 22 TON



#2006 1998 PEINER Model SK405, 22 Ton Hammerhead Tower Crane, s/n SK405-014, equipped with 9-piece 244' jib, 2-piece 73'6" counter-jib with 6-piece counterweight, (10) TS212 19.5' tower sections, and 2-part trolley. In good condition. (Wilders, KY)



#1853 1997 PEINER Model SK405, 22 Ton Hammerhead Tower Crane, s/n SK405-009, equipped with 9-piece 244' jib, 2-piece 73'6" counter-jib with counterweights, (10) TS212 19.5' tower sections, and 2-part trolley. In good condition. (Fontana, CA)

1997 PEINER, 22 TON HAMMERHEAD TOWER CRANE



'97 PEINER SK405 22 TON



#1903 1997 PEINER Model SK405, 22 Ton Hammerhead Tower Crane, s/n SK405-004, equipped with 9-piece 244' jib, 2-piece 73'6" counter-jib with counterweights, (10) TS212 19.5' tower sections, and 2-part trolley. In good condition. (Orlando, FL)

1996 PEINER, 13.5 TON HAMMERHEAD TOWER CRANE



'96 PEINER SK315 13.5 TON



#1986 1996 PEINER Model SK315, 13.5 Ton Hammerhead Tower Crane, s/n SK315-003, equipped with 8-piece 229'8" jib, 2-piece 64' counter-jib with counterweights, (10) TS212 19.5' tower sections, and 2-part trolley. In good condition. (Wilders, KY)

#1977 1996 PEINER Model SK315, 13.5 Ton Hammerhead Tower Crane, s/n SK315-008, equipped with 8-piece 229'8" jib, 2-piece 64' counter-jib with counterweights, (10) TS212 19.5' tower sections, and 2-part trolley. In good condition. (Fontana, CA)

#CC08 1981 AMERICAN PECCO Model SK280, 17.5 Ton Hammerhead Tower Crane, s/n 72100908, equipped with 8-piece 229'8" jib, 2-piece 64' counter-jib with counterweights, (7) TS22 and (3) TS35 19'5" tower sections, and 4-part trolley. In good condition. (Wilders, KY)