



1440 Cowpath Rd. • Hatfield, PA 19440 • 215/361-9099 • Fax: 215/361-9212

**NOTICE:** After (70) successful years in the commercial, industrial, and institutional concrete construction business, the owner of Phillipsburg Bridge and Construction has decided to completely liquidate all assets and pursue other interests. All items in the auction must sell to the highest bidder regardless of price!

**LOCATION:** The auction will be conducted at the Phillipsburg Bridge location, 309 South Main Street, Phillipsburg, New Jersey 08865

**TERMS:** Payment in full is required on sale day by cash, certified funds, or check with a bank letter of guarantee. Sample letter of guarantee: "We hereby guarantee the payment of our customer \_\_\_\_\_ written on his account up to \_\_\_\_\_ dollars for purchases at your auction sale on July 7, 2005." All guaranteed checks should be made payable to Hunyady Auction Co.

**INSPECTION:** Items will be available for inspection July 1, 5 and 6, from 8:00 a.m. until 4:00 p.m.

**REMOVAL:** After complete payment, all sale items may be removed on sale day as long as the removal activity is not disruptive to the sale and only until 5:00 p.m. Items may also be removed Friday, July 8 and Monday, July 11 through Thursday, July 14, from 8:00 a.m. until 4:00 p.m. All items must be removed no later than Thursday, July 14 at 4:00 p.m.

**SALE SITE DIRECTIONS: FROM THE WEST AND PENNSYLVANIA:** Cross the Route 22 bridge, remain in right lane and take immediate Exit (Main/Broad Street/Phillipsburg) Continue to stop sign and turn left onto South Main Street. Proceed (7/10) mile to sale site on left. (Yard Behind Store Front)

**TRAVELING WEST ON 78 IN NEW JERSEY:** Follow signs for Route 22 West. Remain in right lane and take "jug-handle" to Route 122 West. Continue west on Route 122 which joins with |Route 678 North for (3.4) miles to sale site on right (Just Past Park)

**AIRPORT INFORMATION:** The area is serviced commercially through the Lehigh Valley International Airport. Rental cars are available.

**MOTEL INFORMATION:**  
In Phillipsburg, NJ: Clarion (908) 454-9771  
In Easton, PA: Comfort Inn (610) 253-0546,  
Holiday Inn Express (610) 923-9495

**PA AUCTION LICENSE NO:** AY000281

**SALE SITE  
PHONE NUMBER:  
(908) 454-4691**

**SALE SITE  
FAX NUMBER:  
(908) 454-6605**



# ABSOLUTE AUCTION

## COMPLETE LIQUIDATION

**Phillipsburg Bridge and Construction Co., Inc.**

**Thursday  
July 7, 2005  
9:00a.m.**

'86 LULL 8,000#

### Phillipsburg, New Jersey (Easton Area)

'86 JCB 8,000#



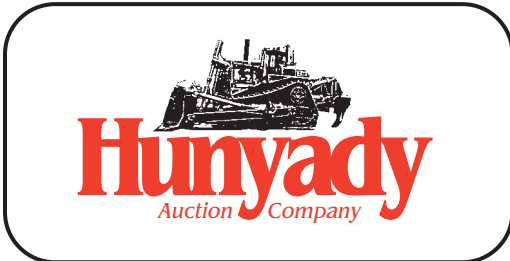
'98 MULTIQUIP-WHITEMAN 4'



IN EXCESS OF 26,000SF SYMONS CONCRETE FORMS



SOFF-CUT GX4000 & G2000



1440 COWPATH RD. • HATFIELD, PA 19440  
215/361-9099 • Fax: 215/361-9212

PRE-SORTED  
FIRST CLASS MAIL  
US POSTAGE  
**PAID**  
HAVERTOWN, PA  
PERMIT #45

**ROUGH TERRAIN FORKLIFTS**

**1986 JCB Model 530B, 8,000# Rough Terrain Forklift**, s/n 530B4/580175-HL, powered by Perkins T4.236T diesel engine and shuttle transmission, equipped with 8'-24" telescopic boom, 35' max lift height, 48" forks, general purpose loader bucket, enclosed ROPS cab, (2) front outriggers, 16.5x25 front and 14x17.5 rear tires. In fair to good condition with good tires.

**1986 LULL Model 824 Highlander 8,000# Rough Terrain Forklift**, s/n F6D5C3-129, powered by 6 cylinder diesel engine and shuttle transmission, equipped with 5'-20" telescopic boom, 35' max lift height, 48" forks, general purpose bucket, ROPS canopy, 16.00x24 front and 15x19.5 tires. In fair to good condition with fair to good tires.

**1987 PETTIBONE Model B-68-T-42, 8,000# Rough Terrain Forklift**, s/n 6-051, powered by Cummins 4 cylinder diesel engine and shuttle transmission, equipped with 8'-33' telescopic boom, 42' max reach, 48" forks, general purpose bucket, (2) hydraulic outriggers, and 13.00x24 foam filled tires. In fair to good condition with good tires. (Transmission Rebuilt)

**TCI Model H4M80, 8,000# Forklift**, s/n 08830122, powered by 4 cylinder diesel engine and shuttle transmission, equipped with 14' mast, 360" max lift height, 48" forks, and FOPS canopy. In fair condition with good tires.

**COMPACTON EQUIPMENT**  
**1997 DELMAG Model VX70F Padfoot Vibratory Trench Compactor**, s/n D118, powered by diesel engine and hydrostatic transmission, equipped with 33" split drums. In good condition.  
**WACKER Model VPG3345R Walk-Behind Vibratory Compactor**, s/n 513901040, powered by Wisconsin 7HP gas engine. In fair to good condition.  
**Gas Powered Plate Compactors:** (2) **WACKER Model 1550** • **WACKER Model V160**  
**Gas Powered Foot Compactors:** **WACKER Model BS600** • **MIKASA Model MT60H** • **WACKER Model GVR151**

**RIDING TROWELS**



**'97 MULTIQUIP-WHITEMAN 4'**

engine and hydrostatic transmission, equipped with 18" blades. In good condition. (434 Original Hours)  
**1998 MULTIQUIP/WHITEMAN Model STH55JDTCSL, 5' Riding Concrete Trowel**, s/n 1J60648, powered by John Deere 220, 4 cylinder diesel engine and hydrostatic transmission, equipped with 23" blades. In good condition. (455 Original Hours)  
**1998 MULTIQUIP/WHITEMAN Model STH55J0TCSL, 5' Riding Concrete Trowel**, s/n IF60299, powered by John Deere 220, 4 cylinder diesel engine and hydrostatic transmission, equipped with 23" blades. In good condition. (406 Original Hours)  
**MULTIQUIP/WHITEMAN Model SRT-304-EP-SL, 5' Riding Concrete Trowel**, s/n NK32864, powered by Yanmar 3 cylinder diesel, equipped with 24.5" blades. In good condition.  
**1999 MULTIQUIP/WHITEMAN Model JTN20HTCSL, 3' Riding Concrete Trowel**, s/n HI61788, powered by Honda 20HP gas engine. In good condition. (317 Original Hours)  
**2001 MULTIQUIP/WHITEMAN Model JWN24HTCSL, 3' Riding Concrete Trowel**, s/n FG0200873, powered by Honda 20HP gas engine. In good condition.  
**MULTIQUIP/WHITEMAN 4' Riding Concrete Trowel**, s/n UNKNOWN, powered by Honda 18HP gas engine, equipped with 18' blades. In fair to good condition.  
**BARTELL Model BTL88, 4' Riding Concrete Trowel**, s/n 014, powered by Kohler 20HP gas engine, equipped with 18" blades. In fair condition.  
**BARTELL Model TR88, 4' Riding Concrete Trowel**, s/n 027, powered by Kohler Magnum 20 gas engine. In fair condition.  
**BARTELL Model TR88, 4' Riding Concrete Trowel**, s/n 002



**'98 MULTIQUIP-WHITEMAN 5'**

**WALK-BEHIND TROWELS**



**(2) OF (18) WHITEMAN 4'**

**(5) WHITEMAN 3' Walk-Behind Concrete Trowels**, powered by Briggs & Stratton 5HP gas engine  
**(18) WHITEMAN 4' Walk-Behind Concrete Trowel**, (7) powered by Honda 8HP and (11) powered by Wisconsin 7HP gas engine.  
**BARTELL 2' Concrete Edger**, powered by Honda 4HP gas engine  
**Assorted 4' and 5' Trowel Pans and Finishing Blades**

**CONCRETE SAWS AND GRINDERS**

**2001 SOFF CUT Model GX4000 Concrete Saw**, s/n 2297, powered by Honda 20HP gas engine. (176 Original Hours)  
**1995 SOFF CUT Model G-2000 Concrete Saw**, s/n 89295, powered by Honda 9HP gas engine. (892 Original Hours)  
**1996 SOFF CUT Model G-2000 Concrete Saw**, s/n 1765, powered by Honda 9HP gas engine. (572 Original Hours)  
**(3) SOFF CUT Model 280 Concrete Saws**, powered by electric motors • **STOWE Slicer 2 Gas Powered Concrete Saw** • **STOWE Slicer 1 Gas Powered Concrete Saw** • **STOWE Slicker #1 Concrete Saw** • **TARGET Gas Powered Concrete Saw** • **EDCO DY1-11H, 10" Floor Grinder**, powered by Honda 11HP gas engine • **ALLEN 10" Floor Grinder**, powered by Kawasaki gas engine

**CONCRETE EQUIPMENT AND ACCESSORIES**

**WACKER 14' Gas Powered Vibrating Screed** • **ALLEN Vibratory Screed** • (2) Gas Powered Power Screeds • Pneumatic Power Screed • (2) **MIGHTY MAC Gas Powered Curing Machines** • (4) Gas Powered Concrete Buggies • (10) Electric Concrete Vibrators • 5' and 10' Channel Floats • 1/2 Yard Concrete Laydown Bucket with frame • Bull Floats • **PRIME MOVER Model 15B Gas Powered Concrete Buggy** • Victaulic Slick Line, Couplers & Flexible Hose • Beam Trolleys • Concrete Curing Blankets  
**(26,000+) SQUARE FEET OF SYMONS CONCRETE FORMS**



**IN EXCESS OF 26,000SF SYMONS CONCRETE FORMS**

<b>(15,036SF) SYMONS 8' Concrete Forms</b>			<b>(3,686.7SF) SYMONS 4' Concrete Forms</b>		
Square Feet	Size	Quantity	Square Feet	Size	Quantity
(13,072SF)	24"	817	(2,976SF)	24"	372
(1,349.4SF)	20"	101	(29.3SF)	22"	4
(240SF)	12"	30	(180SF)	18"	36
(20.1SF)	10"	3	(48SF)	16"	9
(219.8SF)	8"	41	(121.3SF)	14"	26
(60SF)	6"	15	(244SF)	12"	61
(74.8SF)	4"	28	(26.7SF)	10"	8
			(18.7SF)	8"	7
			(8SF)	6"	4
			(34.7SF)	4"	26

<b>(6,543SF) SYMONS 6' Concrete Forms</b>			<b>(561SF) SYMONS 3' Concrete Forms</b>		
Square Feet	Size	Quantity	Square Feet	Size	Quantity
(5,400SF)	24"	450	(207SF)	18"	46
(187SF)	22"	17	(52SF)	16"	13
(520SF)	20"	52	(171SF)	12"	57
(261SF)	18"	29	(10SF)	10"	4
(24SF)	16"	3	(30SF)	8"	15
(35SF)	14"	5	(84SF)	6"	56
(30SF)	12"	5	(7SF)	4"	7
(40SF)	10"	8			
(24SF)	6"	8			
(22SF)	4"	11			

<b>(489.2SF) SYMONS 5' Concrete Forms</b>		
Square Feet	Size	Quantity
(440SF)	24"	44
(33.3SF)	8"	10
(7.5SF)	6"	3
(8.4SF)	4"	5

**Assorted Concrete Form Hardware Including:** 1" and 2" Fillers • Inside and Outside Corners (some hinged) • Wedge Bolts • Wire Ties • Scaffold Brackets • (30) 14"x6.5" Aluminum Shoring Beams • (185') 5"x10' Concrete Floor Forms

**PICKUP TRUCKS**

**1997 FORD Model F-250 HD 4x4 Extended Cab Pickup Truck**, powered by Powerstroke 7.3 liter diesel engine and automatic transmission, equipped with 8' bed, cross toolbox, dual fuel tanks, power windows and seats, air conditioning, and 265/175R16 tires. In fair to good condition with fair tires.

**'97 FORD F-250HD 4X4**

**1992 FORD Model F-250, 4x4 Extended Cab Pickup Truck**, powered by 8 cylinder gas engine and 5 speed transmission, equipped with 8' bed, Fisher 8' angle snowplow with lights and controls, dual fuel tank, and 235/85R16 tires. In fair to good condition with fair to good tires.



**'92 FORD F-250 4X4**

**1990 GMC Model 1500, 4x4 Pickup Truck**, powered by 6 cylinder gas engine and automatic transmission, equipped with 8' bed, air conditioning, and 225/75R16 tires. In fair condition with fair to good tires.

**ROLL-BACK AND FLATBED TRUCKS, AND FLATBED TRAILER**

**1979 FORD Model F-600 Single Axle Roll-Back Truck**, powered by 8 cylinder gas engine and automatic transmission, equipped with Cambridge 20' body with winch, and 9.00x20 tires. In fair condition with fair tires.



**FORD F-600 ROLL-BACK**

**1979 CHEVROLET Model C-70 Single Axle Flatbed Truck**, powered by 8 cylinder gas engine and 5 speed transmission with 2 speed rear, equipped with 20' body and 10.00x20 tires. In fair to poor condition with fair tires.

**1973 CHEVROLET Model C-60 Single Axle Flatbed Truck**, powered by 8 cylinder gas engine and 4 speed transmission, equipped with 18' body with stake pockets and 9.00x20 tires. In fair to good condition with good tires.

**Single Axle Flatbed Trailer**, equipped with 11' bed and ball hitch. In fair condition with fair tires.

**PORTABLE AIR COMPRESSOR, CONTRACTORS TOOLS AND SHOP EQUIPMENT**

**GRIMMER SCHMIDT 125CFM Portable Air Compressor**, 8 cylinder gas engine • (2) **PARTNER Gas Powered Cut-Off Saws** • (4) 3" Gas Powered Trash Pumps • (2) **HOMELITE 2" Gas Powered Centrifugal Pumps** • Suction and Discharge Hose • (3) Pneumatic Demolition Hammers • (5) **HONDA 5,000 Watt Gas Powered Generators** • 15,000 Watt Generator, Lister 2 cylinder diesel engine, with cords • Miscellaneous Scaffolding and Wooden Planks • Fiberglass Ladders • (Approx. 10) Gang Boxes • Rebar Bender • (2) **DEWALT Rotary Hammers** • (2) **DEWALT Circular Saws** • Assorted Power Tools • (3) Electric Hand Grinders • **LINCOLN 225 Amp Welder** with leads • **MILLER Model Thunder Ball 225 Amp Welder** with leads • Torch Set • Torch Carts and Bottles • **CRAFTSMAN 8" Bench Grinder** • **ROCKWELL 653 Versa Plane** • **SOLAR 550, 6/12 Volt Battery Charger/Starter/Tester** • Shop Compressor • Miscellaneous Hand Tools • (4) Wheel Barrows • 40'x48' Steel Shipping Container

**SURVEY EQUIPMENT**

**TOPCON RLH3C Rotating Laser** • **SPECTRA LL500 Precision Laser** • EL-1 Lasers and Receivers • **PENTEX TH60F Transit** • **SPECTRA PRECISION TS315 Transit** • **BERGER 61-8 Transit**, s/n 580537 • **MIKRON M125 Infrared Thermometer** • (5) **MOTOROLA GP350** and (5) GE 2-Way Radios