



Afton Trucking and Excavating

1440 Cowpath Rd. • Hatfield, PA 19440 • 215/361-9099 • Fax: 215/361-9212

NOTICE: Afton Trucking and Excavating is significantly downsizing its fleet and selling equipment that is surplus to their present needs. All items will sell to the highest bidder regardless of price!

LOCATION: The auction will be conducted at Afton's yard, located at 8923 Wattsburg Road, Erie, Pennsylvania, 16509.

AUCTIONEER'S NOTE: The Wills have an excellent reputation for taking good care of their equipment and a commitment to maintenance. Most equipment was purchased new with original hours/mileage. Please plan on attending this auction!

TERMS: Payment in full is required on sale day by cash, certified funds, or check with a bank letter of guarantee. Sample letter of guarantee: "We hereby guarantee the payment of our customer _____ written on his account up to _____ dollars for purchases at your auction sale on March 24, 2005." All guaranteed checks should be made payable to Hunyady Auction Co.

FINANCING: Financing is available. Please contact the auction company for details.

INSPECTION: Items will be available for inspection one week prior to the auction from 8:00 a.m. until 5:00 p.m. (with the exception of Sat. and Sun. March 19 and 20, at which time the site will be closed) or sale day morning from 7:00 a.m.

REMOVAL: After complete payment, all sale items may be removed on sale day as long as the removal activity is not disruptive to the sale and only until 5:00 p.m. Items may also be removed Friday, March 25 from 8:00 a.m. and Monday, March 28 through Wednesday, March 30 from 8:00 a.m. to 5:00 p.m. All items must be removed no later than Wednesday, March 30, at 5:00 p.m.

SALE SITE DIRECTIONS: TRAVELING EAST/WEST On Interstate 90: Exit #29 (Route 8 Hammet/Parade St.) at end of ramp proceed south on Route 8 approximately (1.6) miles to sale site on left.

AIRPORT INFORMATION: The area is serviced commercially and privately through Erie International Airport. Rental cars are available.

MOTEL INFORMATION: Travel Lodge (Exit #29) (814) 825-3100 • Exit #27 Lodging: Red Roof Inn (814) 868-5246 • Days Inn (814) 868-8521 • Quality In and Suites (814) 864-4911 • Best Western (814) 864-1812

PA AUCTION LICENSE NO: AY000281

SALE SITE PHONE NUMBER: (814) 825-6336 • SALE SITE FAX NUMBER: (814) 825-5103

CARGO AND STORAGE TRAILERS



20' 99 CONTINENTAL 7'X12'

with sliding tandems, roll-up rear door, and 10.00x20 tires. In good condition with fair to good tires.

ALL TERRAIN VEHICLES AND GO-CART

1994 JOHN DEERE 6x4 Gator All Terrain Vehicle, s/n W006X4D003305, powered by diesel engine, equipped with electric dump body. In good condition. (No Title) (Purchased New) • SUZUKI Model 125, 4x2 All Terrain Vehicle (No Title) (Purchased New) • Gas Powered Go Cart

CONTRACTORS TOOLS AND MISCELLANEOUS

MUELLER B-100 Tapping Machine, electric drive • Test Plugs • WACKER BS45Y Compactor • WACKER Plate Compactor • HONDA 2,200 Watt Generator • HOME-LITE 3" Trash Pump • 2" Centrifugal Pump • TROY-BUILT 26" Snow Blower, Briggs & Stratton 10HP gas engine • DAVID WHITE Level • CUB Chain Saw • (2) Weed Wackers • Electric Fuel Pump • Rigging, Chokers, & Nylon Slings • Approx. (65) Concrete Dead Men • 8'x8'x8' Manhole Box • 16'x6' Trench Box • EFFICIENCY Stone Mizer Stone Box

SHOP TOOLS

1999 ACCUTURN Tire Machine • ACCUTURN 5100 Tire Balancer • Wheel Weights • LINCOLN 250 Amp Electric Welder • CHICAGO 12 Speed Drill Press • (2) Transmission Jacks • Dual Wheel Dolly • CHICAGO PNEUMATIC 1" Impact Wrench • Miscellaneous Hand Tools • Tire Cage • (2 drums) Transmission Fluid (Cat) • Sheet Metal Rack & Contents • Miscellaneous Truck, Trailer, & Equipment Tires • Steel Stock & Rack • 500 Gallon Oil Tank



ABSOLUTE AUCTION

Afton Trucking and Excavating

Thursday, March 24, 2005 • 9:00 A.M.



Erie, Pennsylvania

'99-'97 INT'L TRI-AXLES



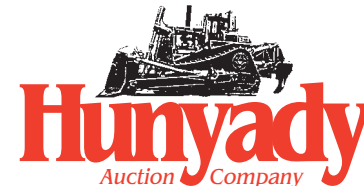
'98 CAT D6MXL



'02 KOBELCO SK160LC



'98 CASE 85XT



1440 COWPATH RD. • HATFIELD, PA 19440
215/361-9099 • Fax: 215/361-9212



PRE-SORTED
FIRST CLASS MAIL
US POSTAGE
PAID
HAVERTOWN, PA
PERMIT #45

HYDRAULIC EXCAVATOR

2002 KOBELCO Model SK160LC Hydraulic Excavator, s/n YM02-U0324, powered by Isuzu diesel engine and hydraulic drive, equipped with 10' dipper stick, 40" digging bucket, hydraulic beyond, enclosed ROPS cab with air conditioning and light package, 13-1/2' crawlers, and 24" TBG pads. In good condition with good undercarriage. (Purchased New)

Buckets & Attachments consisting of: 24" Digging Bucket (JD 590)

CRAWLER TRACTORS AND PULL PAN

1998 CATERPILLAR Model D6MXL Crawler Tractor, s/n 4HS00469, powered by Cat 3116 diesel engine and powershift transmission, equipped with 6-way blade with rake brackets, fingertip control, ROPS over enclosed cab with heat, air conditioning, and light package, drawbar, and 22" SBG pads. In good condition with good undercarriage. (Purchased New)



'99 CASE 550G

CATERPILLAR Model D7F Crawler Tractor, s/n 94N5805, powered by Cat 3306 diesel engine and powershift transmission, equipped with Cat 7A blade with twin hydraulic tilt, Cat cable control unit, ROPS canopy with sweeps, drawbar, and 22" SBG pads. In good condition with fair under carriage.



CAT D7F

CATERPILLAR Model 60 Pull Pan, s/n 2W5137, equipped with drawbar, 7 cubic yard to 9 cubic yard capacity, 14.00x20 front and 16.00x20 rear. In good condition with fair tires.

10' Root Rake (Cat D6)

RUBBER TIRED LOADERS AND SNOW PUSHERS



'95 CASE 821B

1994 JOHN DEERE Model 744E Rubber Tired Loader, s/n CK744ED000440, powered by John Deere diesel engine and powershift transmission, equipped with general purpose bucket, enclosed ROPS cab with heat, air conditioning, and light package, and 26.5x25 tires. In good condition with good tires.



'94 JOHN DEERE 744E



JOHN DEERE 544D

1986 JOHN DEERE Model 544D Rubber Tired Loader, s/n DW544DL512024, powered by John Deere 4 cylinder diesel engine and powershift transmission, equipped with ACS 2.5 cubic yard general purpose loader bucket with bolt-on cutting edge, hydraulic quick disconnect, enclosed cab with roll-bar and light package, and 20.5x25 tires. In good condition with good tires.

PROTECH 12' Snow Pusher Attachment.

In good condition • **ROOT SPRING Model RT621187**, 11' Snow Pusher Attachment, s/n 23422. In good condition • **42" Hydraulic Grapple Forks (JD 544)**

TRACTOR LOADER BACKHOE AND ATTACHMENTS

1997 JCB Model 214 Series 3, 4x4 Tractor Loader Extend-A-Hoe, s/n SLP214TCWE0468303, powered by Perkins diesel engine and shuttle transmission, equipped with general purpose loader bucket with bolt-on cutting edge, 16" digging bucket, WR quick disconnect, enclosed ROPS cab with light package, 14x17.5 front and 19.5x24 rear tires. In good condition with good tires. (Purchased New)



'97 JCB 214, 4X4

CONTECH Hydraulic Plate Compactor (JCB) • WAIN ROY 48" Cleanup Bucket (JCB) • (3) WAIN ROY 12", 24", & 30" Digging Buckets (JCB) • WAIN ROY 24" Slab Bucket (JCB)

SKID STEER LOADER AND ATTACHMENT

1998 CASE Model 85XT Skid Steer Loader, s/n JAF0236732, powered by Cummins 4 cylinder diesel engine and hydrostatic transmission, equipped with 81" general purpose loader bucket with bolt-on cutting edge, auxiliary hydraulics, operator canopy, light package, and Loegering Trail Blazer 15" steel tracks. In good condition with good undercarriage. (Tracks Sold Separately) (Purchased New)

MELROE BOBCAT Model HL, 6' Hydraulic Broom Attachment (Skid Steer)

MINI EXCAVATOR



'00 KUBOTA KX91-2

2000 KUBOTA Model KX91-2 Super Series Mini Hydraulic Excavator, s/n 20078, powered by Kubota 4 cylinder diesel engine and hydraulic drive, equipped with articulated boom, 5' dipper stick, 35" cleanup bucket, JRB quick disconnect, manual thumb, hydraulic beyond, 5' backfill blade, enclosed cab with light package, 6'6" crawlers, and 12" street pads. In good condition with good undercarriage. (15" Digging Bucket To Be Sold Separately) (Purchased New)

VIBRATORY ROLLER

2001 VIBROMAX Model W265 Vibratory Roller, s/n JKC5303812, powered by Kubota 3 cylinder diesel engine and hydrostatic transmission, equipped with 47" smooth drums, water system, drum cleaners, and roll-bar. In good condition.



'01 VIBROMAX W265

SCREENING PLANT



'89 POWER SCREEN MARK II

1989 POWER SCREEN Model Mark II Portable Screening Plant, s/n 2726208, powered by Lister Petter 3 cylinder diesel engine, equipped with 5'x9' feed hopper with grizzly, 24" x 30' feed conveyor, 4'x6' double deck vibrating screen, hydraulic raise and lower, and 7.50x16 tires. In fair to good condition with good tires.

24"x40" Hydraulic Radial Stacker, with hydraulic raise and lower. In good condition.

TRI-AXLE DUMP TRUCKS



'99 INT'L 5000

aluminum Budd wheels, 425/65R22.5 front and 3rd and 11R24.5 rear tires. In good condition with good tires. (Purchased New)

1998 INTERNATIONAL Model 5000, Tri-Axle Dump Truck, powered by Cat 3406, 425HP diesel engine and Fuller 8 speed transmission with lo and lo-lo, equipped with Ti-Brook 18.5' aluminum dump body, air tailgate, electric tarp, 20,000# front axle, 44,000# rears, 20,000# airlift 3rd, spring suspension, 3-position engine brake, 222" wheelbase, side mounted hydraulic tank and tool box, air conditioning, cruise control, heated mirrors, aluminum Budd wheels, 425/65R22.5 front and lift and 11R24.5 rear tires. In good condition with good tires. (Purchased New)



'98 INT'L 5000



'97 INT'L 9300

wheels front and lift, AM/FM cassette, 385/65R22.5 front and lift and 11R24.5 rear tires. In good condition with good tires. (Purchased New)

SINGLE AXLE AND FLATBED DUMP TRUCKS

2000 INTERNATIONAL Model 4900 Single Axle Dump Truck, powered by International DT466E diesel engine and 6 speed transmission, equipped with Heil 10' steel dump body with chute, air gate, 152" wheelbase, electric brake control, Chelsea PTO, pintle hitch, cruise control, air conditioning, heated mirrors, AM/FM radio, and 11R22.5 tires. In good condition with good tires. (Purchased New)



'00 INT'L 4900

1999 FORD Model F-550XL Super Duty 4x4 Single Axle Flatbed Dump Truck, powered by Powerstroke 7.3L, 8 cylinder diesel engine and automatic transmission, equipped with 12' steel flatbed dump body with stake pockets, Boss RT3, 10' power-V snowplow, tool storage box, approx. 50 gallon aluminum fuel tank with 12-volt pump, air conditioning, AM/FM radio, and 225/70R19.5 tires. In good condition with good tires.



'99 FORD F-550XL

SINGLE AXLE AND FLATBED DUMP TRUCKS (CONTINUED)



'97 DODGE 3500

air conditioning, AM/FM radio, and 215/75R16 tires. In good condition with good tires. (Purchased New)

1993 FORD Model F-800 Single Axle Dump Truck, powered by Cummins 6 cylinder diesel engine and 8 speed transmission with lo, equipped with 10' steel dump body with chute, 8' spreader box, Chelsea PTO, aluminum Budd wheels, and 11R22.5 tires. In good condition with good tires. (Purchased New)



'93 FORD F-800

PICKUP AND VAN BODY TRUCK



'03 DODGE RAM 1500

good condition with good to very good tires. (Purchased New)

1993 FORD Model E-350 Van Body Truck, powered by V-8 diesel engine and automatic transmission, equipped with 14' aluminum van body with roll-up rear door, trailer brake control, air conditioning, AM/FM radio, and 225/75R16 tires. In good condition with good tires. (Purchased New)



'93 FORD E-350

TAG-A-LONG TRAILERS



(1) OF (4) TAG-A-LONG TRAILERS

1989 CUSTOM Tandem Axle Tag-A-Long Trailer, equipped with 19' wood level deck, 5' beavertail with 5' ramp, 37,700# GVW, chain dogs, and 9R17.5 tires. In good condition with good tires. (Purchased New)

2001 CAMTRAIL Tandem Axle Tag-A-Long Trailer, equipped with 18' deck, 5' ramp, 6,000# GVWR, and 235/85R16 tires. In good condition with good tires. (Purchased New)

1984 EAGER BEAVER Single Axle Tag-A-Long Tilt Deck Trailer, equipped with 10'x5' wood deck, 5,200# GVWR, and 8x14.5 tires. In good condition with good tires. (Items continued on back panel)