

TRUCK TRACTOR AND LOWBOY TRAILERS



'94 Ford LTL9000 with Talbert 60 Ton Beam

1994 FORD Model LTL9000 Tandem Axle Truck Tractor, powered by Cat 3406, 425HP diesel engine and Fuller 15 speed transmission, equipped with 40,000# rears, Jacobs engine brake, air ride suspension, wetline, airslide 5th wheel, Rest Rite 36" sleeper cab, 150 gallon aluminum saddle tanks, aluminum Budd wheels, aluminum headache rack, and 11R24.5 tires. In good condition with good tires.

1987 TALBERT Model T4DW-50-HRG-RA-1-T1, 50-60 Ton Double Detachable Quad-Axle Lowboy/Beam Trailer, equipped with hydraulic detachable non-ground bearing gooseneck, 24'x8'6" dropside load deck with outriggers, 27'6" 60 ton beam deck, flip-up 4th axle, Neway air ride suspension, and 315/80R22.5 tires. In good condition with good tires.

1973 GENERAL 25 Ton Tandem Axle Lowboy Trailer, equipped with 23' level deck, 5' beavertail with ramps, spring suspension, chain dogs, and 8.25R15TR tires. In good condition with good tires.

BOOM TRUCK



'86 National 12.5 Ton

1986 NATIONAL Model 638A, 12.5 Ton Hydraulic Boom, s/n 18661, equipped with 15'-38' 3-section hydraulic boom, 10 ton Johnson hook block, and dual operation controls, mounted on 1986 Autocar Model DS Tandem Axle Flatbed Truck, powered by Cummins PT240, 240HP diesel engine and automatic transmission, equipped with 44,000# rears, (4) hydraulic outriggers, and 12R22.5 tires. In good condition with good tires.

DUMP TRUCKS

1994 MACK Model DM690S Tri-Axle Dump Truck, powered by Mack EM7-300 diesel engine and Maxitorque T2070, 7 speed transmission, equipped with J&J 17'6" steel dump body, 42,000# rears, 18,500# front axle, 20,000# lift axle, 2-stage Jake brake, air conditioning, 385/65R22.5 front, 11R22.5 rear, and 255/70R22.5 lift axle tires. In good condition with good tires.

1994 MACK Model DM690S Tri-Axle Dump Truck, powered by Mack EM7-300 diesel engine and Maxitorque T2070, 7 speed transmission, equipped with J&J 17'6" steel dump body, 42,000# rears, 18,500# front axle, 20,000# lift axle, manual tarp, Jake brake, air conditioning, AM/FM cassette, 385/65R22.5 front, 11R22.5 rear, and 235/70R22.5 lift axle tires. In good condition with good and fair tires.

1994 MACK Model DM690S Tri-Axle Dump Truck, powered by Mack EM7-300 diesel engine and Maxitorque T2070, 7 speed transmission, equipped with 42,000# rears, 18,500# front axle, 20,000# lift axle, J&J 17'6" steel dump body with tarp, 2-position Jake brake, airlift 3rd axle, 425/65R22.5 front, 11R22.5 rear and 295/75R22.5 lift axle tires. In good condition with fair to good tires.

1991 MACK Model DM688S Tri-Axle Dump Truck, powered by Mack E7-350 diesel engine and Maxitorque 12 speed transmission, equipped with 44,000# rears, 20,000# front axle, 20,000# lift axle, 18' steel dump body, engine brake, airlift 3rd axle, power tarp, heated mirrors, air tailgate, 385/65R22.5 front, 11R24.5 rear and 11R22.5 lift axle tires. In good condition with good tires.

1991 MACK Model DM688S Tri-Axle Dump Truck, powered by Mack E7-350 diesel engine and Maxitorque 12 speed transmission, equipped with 44,000# rears, 20,000# front axle, 20,000# lift axle, 18' steel dump body, engine brake, airlift 3rd axle, power tarp, heated mirrors, air tailgate, 385/65R22.5 front, 11R24.5 rear and 11R22.5 lift axle tires. In good condition with good tires.

DUMP TRUCKS (CONTINUED)

1988 MACK Model RD690S Tri-Axle Dump Truck, powered by Mack EM6-300L diesel engine and 7 speed transmission, equipped with J&J 16' heated aluminum dump body with tarp, engine brake, airlift 3rd axle, 315/80R22.5 front and lift axle tires, and 11R24.5 rear tires. In fair to good condition with good tires.

1987 DIAMOND REO Model C11620F Tri Axle Dump Truck, powered by Cummins 400HP diesel engine and Fuller 15 speed deep reduction transmission, equipped with 17'6" steel dump body with tarp, 18,000# front and 44,000# rear axles, 3-stage engine brake, and 385/65R22.5 front and 12R22.5 rear tires. In fair to good condition with good tires. (Glider Kit) (Front & Rear Springs & Suspension Rebuild March 2004)

1975 MACK Model RD685S Tandem Axle Dump Truck, powered by Mack ENDT676, 285HP diesel engine and 6 speed lo-hole transmission, equipped with Bibeau 14'6" steel dump body, HTC hydraulic tailgate spreader, 10' snowplow, 315/75R22.5 front and 11R22.5 rear tires. In fair to good condition with good tires.

1992 FORD Model L8000 Single Axle Dump Truck, powered by Ford 7.8L diesel engine and automatic transmission, equipped with J&J 10' aluminum body with coal chute, 10' hydraulic snowplow with 10' wing plow, hydraulic tailgate spreader, 315/80R22.5 front and 12R22.5 rear tires. In fair to good condition with fair to good tires.

1984 FORD Model 8000 Single Axle Dump Truck, powered by Cat 3208 diesel engine and 5 speed transmission with 2 speed rear, equipped with Galion 10' steel dump body with coal chute, rear air plumbing, and 12R22.5 front and 11.00R20 rear tires. In good condition with good tires.



(1) of (3) '94 Mack DM690S



(1) of (2) '91 Mack DM688S



'88 Mack RD690S



(1) of (2) Ford 8000



1440 Cowpath Rd. • Hatfield, PA 19440 • 215/361-9099 • Fax: 215/361-9212

NOTICE: Upon completion of a major project, Knorr Contracting has decided to liquidate items surplus to their present needs. Consignments have been added by area contractors. All items will sell to the highest bidder regardless of price!

LOCATION: The auction will be conducted at Knorr Contracting's facility located at 7295 Old Berwick Road, Bloomsburg, PA 17815

TERMS: Payment in full is required on sale day by cash, certified funds, or check with a bank letter of guarantee. Sample letter of guarantee: "We hereby guarantee the payment of our customer _____ written on his account up to _____ dollars for purchases at your auction sale on December 9, 2004." All guaranteed checks should be made payable to Hunyady Auction Co.

FINANCING: Financing is available, please contact the auction company for details.

INSPECTION: Items will be available for inspection one week prior to the auction from 8:00 a.m. until 5:00 p.m. (with the exception of Sat. Dec. 4 and Sun. Dec. 5, at which time the site will be closed) or sale day morning from 7:00 a.m.

REMOVAL: After complete payment, all sale items may be removed on sale day as long as the removal activity is not disruptive to the sale and only until 5:00 p.m. Items may also be removed Friday, December 10 and Monday, December 13 thru Wednesday, December 15, from 8:00 a.m. to 5:00 p.m. All items must be removed no later than Wednesday, December 15, at 5:00 p.m.

SALE SITE DIRECTIONS: FROM INTERSTATE 80: Exit at #241 and proceed to Route 11 North. (Exit #241-B traveling Interstate 80 Eastbound) Follow (1.0) miles to 1st traffic light and turn right. Cross Railroad Tracks and make 1st left onto Old Berwick Road. Follow to sale site.

AIRPORT INFORMATION: This area is serviced commercially through the Wilkes-Barre/Scranton International Airport. Private aircraft is accepted at the Bloomsburg Municipal Airport (N13) (2,800' asphalt)

MOTEL INFORMATION: Patriot Inn (570) 387-1776 (Auction Headquarters) The following hotels are located off Exit #236 of Interstate 80: Hampton Inn (570) 380-1020 • Econo Lodge (570) 387-0490 • The Inn At Turkey Hill (570) 387-1500

SALE SITE PHONE NUMBER: (570) 759-0813

SALE SITE FAX NUMBER: (570) 759-0452

PA AUCTION LICENSE NO: AY000281



'96 Chevy 3500 Crew Cab



'84 Eager Beaver 20 Ton



ABSOLUTE AUCTION

Knorr Contracting, Inc.

BLOOMSBURG, PENNSYLVANIA
Thursday, December 9, 2004 - 10:00AM



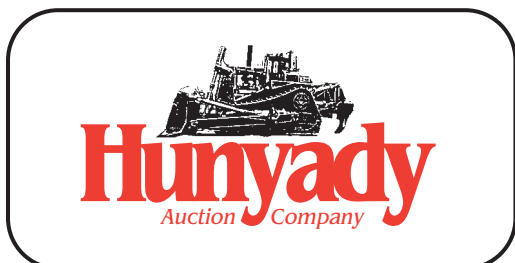
'84 Cat 12G



'88 Pioneer 3042 Jaw



'86 Cat D6H



1440 COWPATH RD. • HATFIELD, PA 19440
215/361-9099 • Fax: 215/361-9212



PRE-SORTED
FIRST CLASS MAIL
US POSTAGE
PAID
HAVERTOWN, PA
PERMIT #45

CRAWLER TRACTORS AND ATTACHMENTS



'86 Cat D6H

1986 CATERPILLAR Model D6H Crawler Tractor, s/n 4RC00963, powered by Cat 3306 diesel engine and powershift transmission, equipped with semi-U blade with right side tilt, ROPS canopy, drawbar, and 22" SBG pads. In good condition with good undercarriage. (Rebuilt Engine Installed Aug. '03)



Cat D9H

CATERPILLAR Model D9H Crawler Tractor, s/n 90V1612, powered by Cat D353 spacer plate diesel engine and powershift transmission, equipped with U-blade with right side tilt, rear counterweight, enclosed ROPS cab, and 27" SBG pads. In good condition with good undercarriage.

CATERPILLAR Model D6 Crawler Tractor, s/n 9U25186, powered by pony start diesel engine and direct drive transmission, equipped with straight blade, ROPS canopy, drawbar, and 18" SBG pads. In fair to good condition with fair to good undercarriage.

FERGUSON 60" Double Drum Tow Behind Sheepsfoot Compactor • **JERSEY 101 Spreader Box**, s/n 936, w/8.25x15 tires. (Fits Cat D8) • 7' Root Rake (JD 450)

INTEGRATED TOOL CARRIERS AND RUBBER TIRED LOADER



(1) of (2) Cat IT28B

1988 CATERPILLAR Model IT28B Integrated Tool Carrier, s/n 1HF00978, powered by Cat 3204 diesel engine and powershift transmission, equipped with 3rd valve, hydraulic quick disconnect attachment, general purpose loader bucket with bolt on cutting edge, enclosed ROPS cab with air conditioning, and 17.5R25 tires. In good condition with fair tires.

1986 CATERPILLAR Model IT28B Integrated Tool Carrier, s/n 8JB00993, powered by Cat 3204DI diesel engine and powershift transmission, equipped with 3rd valve, hydraulic quick disconnect, general purpose loader bucket, enclosed ROPS cab, and 17.5R25 tires. In good condition with good tires.

1985 KOMATSU Model WA500-1 Rubber Tired Loader, s/n 10018, powered by Komatsu S6D140-1 diesel engine and powershift transmission, equipped with general purpose loader bucket, ROPS over enclosed cab, and 29.5x25 tires (missing rear wheels). (Parts Only) (To Be Sold In Absentia Via Photo)

HYDRAULIC EXCAVATORS



'87 Cat 235B

Plated Compactor, s/n 5279 • 20" Digging Bucket (Cat 235) • 40" Digging Bucket (Cat E120) • 24" Digging Bucket (Int'l 630) • 70" Digging Bucket (Cat 225)

1986 GRADALL Model G660C Rubber Tired Excavator, s/n NP403010, powered by Detroit 4-71 diesel engine, equipped with 56" clean-up bucket, remote control, mounted on 6x4 carrier, powered by Cat 3208 diesel engine and 5 speed transmission with 3 speed auxiliary, equipped with 12R22.5 tires. In good condition with fair to good tires.

GRADALL Model G660C Rubber Tired Hydraulic Excavator, s/n NP342531, powered by Detroit 4-71 diesel engine, equipped with 60" clean-up bucket, remote control, mounted on 6x4 carrier, powered by Detroit 6V-53 diesel engine and 5 speed transmission with 3 speed auxiliary, equipped with 10.00x20 tires. In fair condition with fair tires.

GRADALL Model G660 Rubber Tired Excavator, s/n G63174, powered by Cat 1160 diesel engine, equipped with 60" clean-up bucket, mounted on 6x4 carrier, powered by Chrysler V-8 gas engine and 5 speed transmission, equipped with 10.00x20 tires. In fair to good condition with fair to good tires.

G660 Buckets: 41" Concrete Slab • 72" Trapezoidal • (3) 15" Trapezoidal • 60" & 29" Cleanup • G660 Digging Buckets 48" • (2) 42" • 36" • (2) 30" • (2) 24" • 23"

MOTOR GRADER

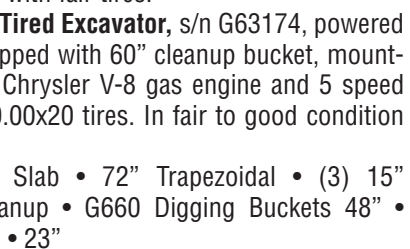
1984 CATERPILLAR Model 12G Articulated Motor Grader, s/n 61M10471, powered by Cat 3306 diesel engine and powershift transmission, equipped with 12' all hydraulic moldboard, rear mounted multi-shank ripper with (3) shanks, front push block, enclosed ROPS cab with heat, and 14.00x24 tires. In good condition with fair to good tires.



'84 Cat 12G



'86 Gradall G660C



'94 Cat 426B 4x4 Extend-A-Hoe

24" Digging Bucket (JCB) • (2) 12" Digging Buckets (JCB)

ASPHALT PAVER AND ROLLERS

BLAW KNOX Model PF-115 Rubber Tired Asphalt Paver, s/n 0919-002, powered by John Deere diesel engine and hydrostatic transmission, equipped with 8' heated vibratory screed, tandem steering bogies, and 14.00x20 tires. In good condition with good tires.

1990 INGERSOLL-RAND Model DD-90 Vibratory Tandem Roller, s/n 5723, powered by Cummins 4BT diesel engine and hydrostatic transmission, equipped with 66" smooth drums, water system, and front and rear spray bars. In good condition. (Rebuilt Engine Installed July 2003)

1990 DYNAPAC Model CC-10 Series II Vibratory Tandem Roller, s/n 5861955, powered by Deutz diesel engine and hydrostatic transmission, equipped with 42" smooth drums and water system. In good condition.

1993 DYNAPAC Model CC-102 Vibratory Tandem Roller, s/n 60110378, powered by Deutz diesel engine and hydrostatic transmission, equipped with 38.5" smooth drums and water system. In good condition.



'90 DYNAPAC CC10

'90 IR DD-90

CRUSHING PLANT

1988 PIONEER Model 3042 Portable Jaw Crusher, s/n 153-PRVE-296, powered by Cummins NTA855P, 295HP diesel engine and Twin Disc torque converter, equipped with 23'x13' 35 ton feed hopper, vibrating grizzly feeders, 36"x30" side discharge conveyor, 36" under belly discharge conveyor with impact idlers, 36" IMI belt magnet, Pioneer 42"x64" spare jaw die, spare vibrating grizzly feeder drive, support structures, mounted on 9'-10"W x 31'L tandem axle carrier with 10.00x20 tires. In good condition with good tires.

TRACTOR LOADER BACKHOES AND ATTACHMENTS



'94 Cat 426B 4x4 Extend-A-Hoe

1994 CATERPILLAR Model 426B, 4x4 Tractor Loader Extend-A-Hoe, s/n 6KL00358, powered by Cat 3054DIT diesel engine and shuttle transmission, equipped with general purpose loader bucket with bolt-on cutting edge, 22" digging bucket, hydraulic beyond, enclosed ROPS cab with light package, 12.5/80 -18 front and 19.5x24L rear tires. In good condition with good tires.

KENT KHB5G Demo Hammer (Cat 416) •



Wacker RD880

1993 INGERSOLL-RAND Model DD110 Tandem Vibratory Roller, s/n 5241SEC, equipped with hydrostatic transmission and 77" smooth drums. (Not Running - Engine Removed)

ROUGH TERRAIN FORKLIFT



'87 Skytrack 7038

1987 KOEHRING SKYTRACK Model 7038, 7,000# Telescopic Rough Terrain Forklift, s/n 7F0324, powered by Ford diesel engine and powershift transmission, equipped with 38" lift height, 48" forks, 4-wheel drive, 4-wheel steer, carriage tilt, ROPS canopy, and 13.00x24 tires. In fair to good condition with fair to good tires.



(1) of (2) 4,000 Gallon Fuel Truck

FUEL TRUCKS

1989 AUTOCAR Tandem Axle Fuel Truck, powered by Cummins LTA10, 240HP diesel engine and Spicer 7 speed transmission, equipped with 4,000 gallon 4-compartment fuel tank (1,000 gallon each), Neptune meter and hose reel with Scully Com VII nozzle, (2) PTO driven loading pumps, coated tank lining, and 11R24.5 tires. In good condition with good tires.

1989 AUTOCAR Tandem Axle Fuel Truck, powered by Cummins LTA10, 240HP diesel engine and Spicer 7 speed transmission, equipped with 4,000 gallon 4-compartment fuel tank (1,000 gallon each), Neptune meter and hose reel with Scully Com VII nozzle, (2) PTO driven loading pumps, coated tank lining, and 11R24.5 tires. In good condition with good tires.

ASPHALT PAVER AND ROLLERS (CONTINUED)

WACKER Model RD880V Vibratory Tandem Roller, s/n 673603081, powered by Briggs & Stratton 16HP Vanguard gas engine and hydrostatic transmission, equipped with 35.5" smooth drums, water system, and drum cleaners. In good condition.

1994 INGERSOLL-RAND Model DD110 Tandem Vibratory Roller, s/n 5418SFD, powered by Cummins diesel engine and hydrostatic transmission, equipped with 77" smooth drums. (Not Running - Engine Seized)



'90 Altec D990



Asplundh 42' Bucket

DIGGER DERRICK, BUCKET, AND UTILITY TRUCKS

1990 ALTEC Model D990-47 Digger Derrick, s/n 0190M0343, rear corner mounted on 1990 Ford Model F-800 Single Axle Utility Truck, powered by Ford 215HP diesel engine and automatic transmission, equipped with (4) hydraulic outriggers and 11R22.5 tires. In fair condition. (Missing Hoist Cable)

ASPLUNDH Model LR42, 42' Aerial Lift, s/n 868332, 500# basket capacity, lower boom insert, AC/DC inverter, mounted on 1985 FORD Model C800 Single Axle, powered by Cat 3208 diesel engine and automatic transmission, equipped with (2) hydraulic outriggers, and 11R22.5 tires. In good condition with good tires.

1988 FORD Model F-700 Utility Truck, powered by Ford 7.8 liter Turbo diesel engine and automatic transmission, equipped with 10' enclosed walk-in service body, PTO driven air compressor, air hose reel, fuel hose reel with Gasboy pump and meter, and 9.00x20 tires. In good condition with good tires.

MECHANICS, FLATBED, AND KNUCKLEBOOM TRUCKS



'89 Ford Super Duty

1989 FORD Model F Super Duty Mechanics Truck, powered by Ford 7.3 liter diesel engine and 5 speed transmission, equipped with Reading 11' open mechanics body, Auto Crane model 3203PR, 3,200# 3-section hydraulic boom, Campbell Hausfield 16HP gas powered air compressor, hose reel, manual stabilizers, and LT235/85R16 tires. In fair to good condition with good tires.

1989 FORD Model F-350 Crew Cab Flatbed Truck, powered by V-8 gas engine and 5 speed transmission, equipped with 9' flatbed with ladder rack, side toolboxes, and LT235/85R16 tires. In good condition with good tires.

1987 FORD Model F-350 Flatbed Truck, powered by International diesel engine and 4 speed transmission, equipped with 9'6" flatbed, dual rear wheels, and LT235/85R16 tires. In good condition with good tires.

1972 FORD Model 7000 Single Axle Knuckleboom Flatbed Dump Truck, powered by Cat 1160, 225HP diesel engine and 5 speed transmission, equipped with hydraulic knuckleboom with (2) stabilizers, 16' flatbed/dump body, air brakes, and 10.00R20 tires. In fair to good condition with good tires.

PICKUP TRUCK AND TAG-A-LONG TRAILERS

1996 CHEVROLET Model 3500 Crew Cab Pickup Truck, powered by Vortec V-8 gas engine and automatic transmission, equipped with 8' bed with cross and side boxes, dual rear wheels, air conditioning, AM/FM cassette, and 225/75R16 tires. In fair to good condition with good tires.

1984 EAGER BEAVER Model 20HA, 20 Ton Tandem Axle Tag-A-Long Trailer, equipped with 17' level deck, 5' beavertail with ramps, air brakes, chain dogs, and 8.25R15TR tires. In good condition with good tires.

1972 GENERAL 12 Ton Tandem Axle Tag-A-Long Trailer, equipped with 12' deck, 5' beavertail with ramps, 29,400# GVWR, electric brakes, and 8-14.5 tires. In fair to good condition with good tires.

1995 DOOLITTLE Tag-A-Long Trailer, equipped with 16' wooden deck, 48" steel mesh fold-up ramp, and 205/75D15 tires. In fair to good condition with good tires.

PORTABLE GENERATOR, WELDER, AND SCISSORS LIFT

1999 INGERSOLL-RAND Model E50XWCU, 50 KW Portable Generator Set, s/n 30007UDJ811, powered by Cummins 4BT3.9G diesel engine, equipped with 215/75R15 tires. In good condition with good tires.

LINCOLN Model Weldonpower AC/DC, 200 Amp Electric Welder/Generator, s/n A1099270R, powered by Briggs & Stratton 15HP gas engine, equipped with leads. In fair to good condition.

UPRIGHT Model SL30, 30' Scissors Lift, s/n 9857, powered by 12 volt battery bank, equipped with 14'x5' work platform, 1,000# platform capacity, onboard charger, 2-wheel drive, and B78x13 tires. In fair condition with fair tires.

(2) CROWN 6,000# Electric Walk Behind Pallet Jacks, equipped with 48" forks. In fair condition.

DIESEL ENGINE, TRUCK, AND EQUIPMENT PARTS

CAT 3406 Rebuilt Engine (Cat 980C) (Zero Hours on Fabick Tractor Rebuild) • **FLINK FM-8 Salt Spreader**, s/n 366 • (3) 8' Tailgate Spreaders • (1) Plumbing Kit (UNUSED) (Cat 320) • Assorted **BLAWKNOX Paver Parts** • (1) Idler and (1 Pallet) Sprocket Segments (D9H) • Assorted Truck Parts; Pulleys; Assorted Hydraulic Hose

CONTRACTORS TOOLS AND EQUIPMENT

8'x16' Trench Box, equipped with 5' spreaders • **LOVEMAN 12 Cubic Yard Gravel Box** • Gas Powered Hydraulic Pipe Pusher, with accessories • (3) 1 cy Concrete Buckets • Approximately (200') 18" Straight Curb Forms • Approximately (60') 18" Radius Curb Forms • (10) **EFCO 4'x9'** Steel Concrete Forms • Approximately (2 Pallets) **SYMON Concrete Forms**, assorted size and hardware • **STOW Gas Powered Concrete Screed** • Gas Powered Asphalt Machine • **INGERSOLL RAND and WACKER Gas Powered Foot Compactors** • (2) **WACKER 3"** Gas Power Portable Trash Pumps • (2) Gas Powered Portable Air Compressors • **COLEMAN Powermate Industrial Air Compressor**, Briggs & Stratton 11HP gas engine • (1) **KARCHER 370 Portable Power Washer** • **AEROQUIP Electric Hydraulic Hose Machine** • Assorted Road Signs, Stands, and Amber Lights