

Please visit our website at [www.hunyady.com](http://www.hunyady.com)

**Green River Equipment, Inc.  
Yukon Valley Minerals**

**1440 Cowpath Rd. • Hatfield, PA 19440 • 215/361-9099 • Fax: 215/361-9212**

**NOTICE:** By Order of Secured Party, GE Capital Corporation, the assets formerly operated by Green River Equipment and Yukon Valley Minerals will be sold at absolute auction. All items will be sold free and clear of all liens and encumbrances to the highest bidder regardless of price!

**AUCTIONEER'S NOTE:** Please understand that there are no small items in this sale. The auction will begin directly at 9:00AM, please be prompt.

**LOCATION:** The auction will be held at Daviess County Sand & Gravel, located at 6133 US 60 East, Owensboro, KY 42303 (approximately 5 miles east of the center of Owensboro, along Route 60)

**TERMS:** Payment in full is required on sale day by cash, certified funds, or check with a bank letter of guarantee. Sample letter of guarantee: "We hereby guarantee the payment of our customer \_\_\_\_\_ written on his account up to \_\_\_\_\_ dollars for purchases at your auction sale on February 12, 2004." All guaranteed checks should be made payable to Hunyady Auction Co.

**INSPECTION:** Items will be available for inspection beginning Monday, February 9 thru Wednesday, February 11, from 8:00 a.m. until 5:00 p.m. or sale day morning from 7:00 a.m. until 9:00 a.m.

**REMOVAL:** After complete payment, all sale items may be removed on sale day as long as the removal activity is not disruptive to the sale and only until 5:00 p.m. Items may also be removed Friday, February 13 and Monday, February 16 thru Thursday, February 19 from 8:00 a.m. to 5:00 p.m. All items must be removed no later than Thursday, February 19, at 5:00 p.m.

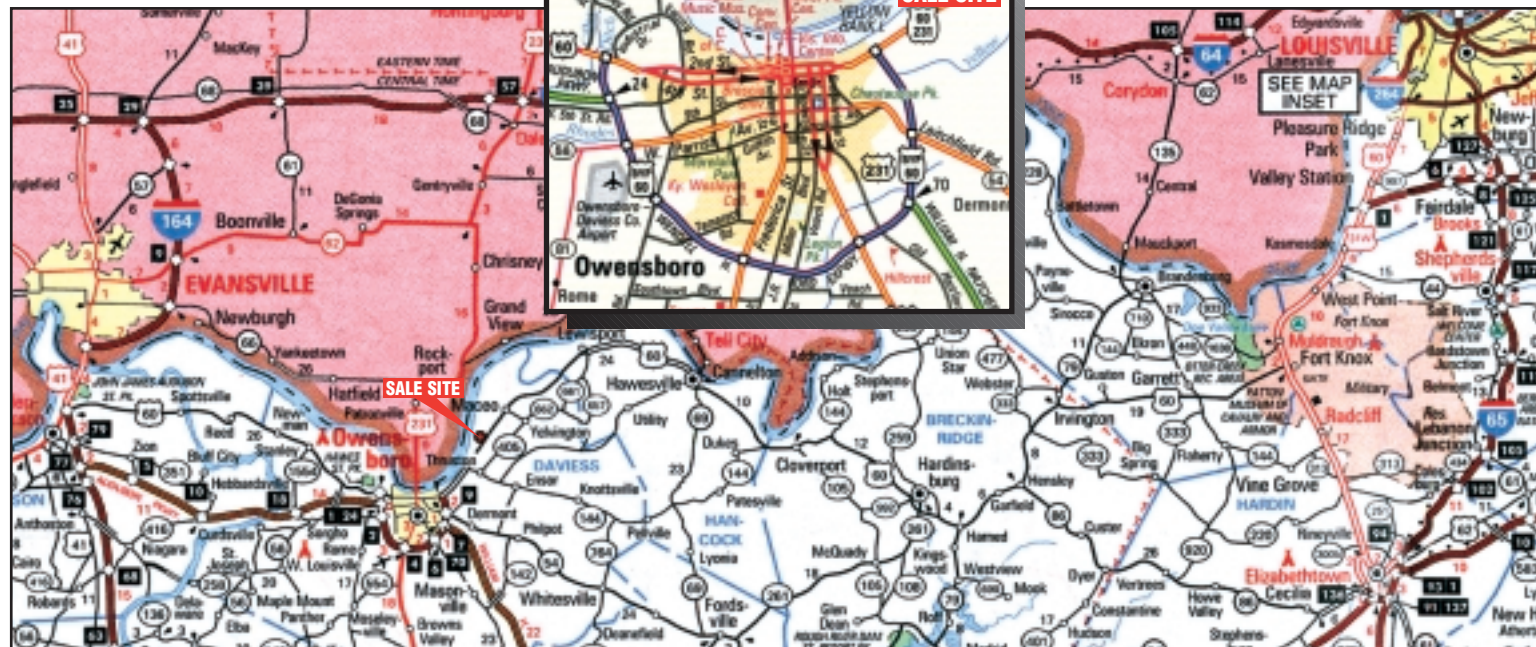
**SALE SITE DIRECTIONS:** FROM US ROUTE 60 BYPASS IN OWENSBORO: Proceed East to end of bypass and turn right onto US 60 East. Continue (3.8) miles, turn left into Daviess County Sand & Gravel. The sale site will be immediately on right.

**AIRPORT INFORMATION:** This area is serviced via commuter service and private aviation thru Owensboro Daviess County Airport or Evansville Regional Airport in Evansville, Indiana. Evansville Airport is approximately (45) miles from sale site.

**MOTEL INFORMATION:** Executive Inn Owensboro (Auction Headquarters) (270) 926-8000 • Days Inn (270) 684-9621 • Holiday Inn Express (270) 685-2433

**SALE SITE PHONE NUMBER: (270) 852-5281**  
**SALE SITE FAX NUMBER: (270) 852-5282**

**KY AUCTION LICENSE NO:** RP-07064



# ABSOLUTE AUCTION

**By Order of Secured Creditor**

**THURS., FEB. 12, 2004 9:00 a.m.  
Owensboro, Kentucky**



**Green River Equipment, Inc.  
Yukon Valley Minerals**



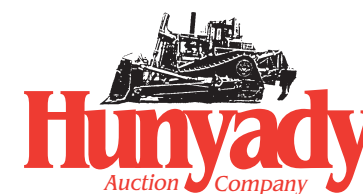
(2) OF (4) MACK RD688S



'98 IR ECM590



'91 CAT 815B



1440 COWPATH RD. • HATFIELD, PA 19440  
215/361-9099 • Fax: 215/361-9212

PRE-SORTED  
FIRST CLASS MAIL  
U.S. POSTAGE  
**PAID**  
HAVERTOWN, PA  
PERMIT #45



'98 EAGLE  
ULTRAMAX  
1000-15CC

**PORTABLE CRUSHING PLANT**

**1998 EAGLE Model UltraMax 1000-15CC Portable Crushing Plant**, s/n 11435, powered by John Deere 275HP diesel engine and 100KW generator, equipped with 11 cubic yard feed hopper with 39"x16" vibrating grizzly feeder with 5' tapered step grizzly, UltraMax 15 3-stage impact crusher, s/n 11436, 42"x40' discharge conveyor, 2-deck vibratory screen, powered by electric motor with belt drive, 18"x10' under feeder conveyor, 18"x30' crusher return belt, 18"x12' side discharge conveyor, mounted on 3-axle trailer with hydraulic lift/leveling system, powered by 8HP gas engine, (6) stabilizers, and 10.00x20 tires. In good condition with good tires.



**PORTABLE SCREENING PLANT**

**1999 POWER SCREEN Model Turbo Chieftain 1200 Portable Screening Plant**, s/n 5014201, powered by Cummins 4B3.9 diesel engine, equipped with 5'x12' feed hopper with vibrating grizzly, 36"x12' belt feeder, 36"x30' charging conveyor, 5'x10' double deck vibratory screen, 30"x25' rear discharge conveyor, and (2) 28"x25' side discharge conveyors, mounted on tandem axle carrier with 385/65R22.5 tires. In good condition with good tires.



(1) OF (3) '98  
EAGLE 50'  
RADIAL  
STACKERS

**RADIAL STACKERS**

**1998 EAGLE Model PRSC, 30"x50' Radial Stacking Conveyor**, s/n 2873, powered by electric motor and gear reducer, with manual raise and lower and 11x22.5 tires. In good condition.  
**1998 EAGLE Model PRSC, 30"x50' Radial Stacking Conveyor**, s/n 2875, powered by electric motor and gear reducer, with manual raise and lower and 11x22.5 tires. In good condition.  
**1998 EAGLE Model PRSC, 30"x50' Radial Stacking Conveyor**, s/n 2876, powered by electric motor and gear reducer, with manual raise and lower and 11x22.5 tires. In good condition.

**CRAWLER DRILL**

**1998 INGERSOLL-RAND Model ECM590 Self Contained Crawler Drill**, s/n R11128HF, powered by Cummins 6CT8.3 diesel engine and hydraulic drive, equipped with YH80A drifter, 5-steel carousel, 250ACFM/150PSI air compressor, dust system with hydraulic adjustable dust collector hood, oscillating track frame, 9' crawlers, and 12" pads. In good condition with good undercarriage.



**ARTICULATED END DUMP**

**1999 VOLVO Model A35C, 35 Ton Articulated End Dump**, s/n A35CV60512, powered by Volvo diesel engine and powershift transmission, equipped with bed liners, tailgate, air conditioning, and 26.5R25 tires. In good condition with good tires.



**RUBBER TIRED  
LOADER**

**1993 CATERPILLAR Model 988B Rubber Tired Loader**, s/n 50W11475, powered by Cat 3408 diesel engine and powershift transmission, equipped with general purpose loader bucket with teeth, ROPS over enclosed cab with air conditioning, fast fuel, and light package. In good condition with good tires.

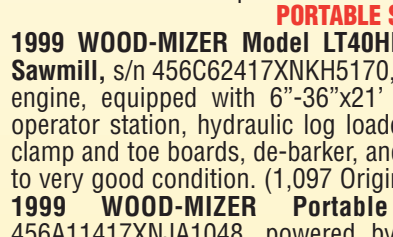


**CRAWLER TRACTORS**

**1990 CATERPILLAR Model D6H Series II Crawler Tractor**, s/n 6FC00720, powered by Cat 3306 diesel engine and powershift transmission, equipped with straight blade with tilt, ROPS over enclosed cab with air conditioning and rear screen, 24" SBG pads, and draw bar. In good condition with good undercarriage.



**CATERPILLAR Model D8H Crawler Tractor**, s/n 46A33704, powered by Cat D-342T diesel engine and powershift transmission, equipped with semi-U blade with tilt, ROPS canopy, 26" SBG pads, and draw bar. In fair condition with poor undercarriage. (Bad Engine - Not Running)



**1999 WOOD-MIZER Model LT40HDG35 Super Hydraulic Portable Sawmill**, s/n 456C62417XNKH5170, powered by Wisconsin 35HP gas engine, equipped with 6"-36"x21' log capacity, Command Control operator station, hydraulic log loader, hydraulic log turner, hydraulic clamp and toe boards, de-barker, and automatic board return. In good to very good condition. (1,097 Original Hours)  
**1999 WOOD-MIZER Portable Twin Blade Edger**, s/n 456A11417XNJA1048, powered by Kohler Pro 25HP gas engine, equipped with 3"-15" board cut width and 24.75" maximum board acceptance, 2" maximum board thickness, twin 14" circular blades, 6' power roller feed conveyor, 10' roller discharge conveyor, and 215/75R114 tires. In good to very good condition with good to very good tires. (0,951 Original Hours)



**SOIL COMPACTOR**

**1991 CATERPILLAR Model 815B Soil Compactor**, s/n 17Z01313, powered by Cat 3306T diesel engine and powershift transmission, equipped with 52"x37" compaction wheels, leveling blade, ROPS canopy, and light package. In good condition with good wheels.



**HYDRAULIC EXCAVATORS**

**1987 CATERPILLAR Model EL300-LC Hydraulic Excavator**, s/n 4NF00158, powered by Cat 3306 diesel engine and hydraulic drive, equipped with 13'-6" dipper stick, 42" digging bucket, 15'9" crawlers, and 31.5" TBG pads. In fair to good condition with fair to good undercarriage.  
**1993 HYUNDAI Model Robex-290LC Hydraulic Excavator**, s/n E0553, powered by Cummins diesel engine and hydraulic drive, equipped with 10' dipper stick, 48" digging bucket, 16'6" crawlers, 32" TBG pads, and light package. In good condition with fair undercarriage. (Left Side Track Frame Disassembled)



**END DUMPS**

**EUCLID Model 302LD, 50 Ton End Dump**, s/n 71310, powered by Cummins 1710 diesel engine and powershift transmission, equipped with heated body with bed liners, brake retarder, and 21.00x35E4 tires. In fair condition with fair tires.  
**EUCLID Model 215FD, 25 Ton End Dump**, s/n 70769, powered by Detroit 6-71 diesel engine and powershift transmission, equipped with bed liners and 16.00x25 tires. In fair condition with fair tires. (Not Running - Engine Disassembled)



IR SP-60DD

**INGERSOLL-RAND Model SP-60DD Vibratory Compactor**, s/n 5210-S, powered by Cummins 8.3 liter diesel engine and hydrostatic transmission, equipped with 100" smooth drum, drum drive, ROPS canopy, light package, and 23.5x25 tires. In fair to good condition with fair tires.



(2) 2000 MACK RD688S

**2000 MACK Model RD688S Tri Axle Dump Truck**, powered by Mack E7-350 diesel engine and Fuller 10 speed transmission, equipped with Rogers 16' steel dump body with air tailgate and electric tarp kit, 18,000# front and 44,000# rear axles, 18,000# air lift 3rd axle, 2-position Jake brake, Alcoa aluminum front wheels, air conditioning, and 425/65R22.5 front and 11R24.5 rear tires. In good condition with fair and good tires.  
**2000 MACK Model RD688S Tri Axle Dump Truck**, powered by Mack E7-350 diesel engine and Fuller 10 speed transmission, equipped with Rogers 16' steel dump body with air tailgate and electric tarp kit, 18,000# front and 44,000# rear axles, 18,000# air lift 3rd axle, 2-position Jake brake, Alcoa aluminum front wheels, air conditioning, and 425/65R22.5 front and 11R24.5 rear tires. In good condition with good tires.



(1) OF (2) '99 MACK RD688S



**1999 MACK Model RD688S Tri Axle Dump Truck**, powered by Mack E7-350 diesel engine and Fuller 10 speed transmission, equipped with Rogers 16' steel dump body with air tailgate and electric tarp kit, 12,860# front and 44,000# rear axles, 18,000# air lift 3rd axle, 2-position Jake brake, Alcoa aluminum front wheels, air conditioning, and 425/65R22.5 front and 11R24.5 rear tires. In good condition with good tires.  
**1999 STERLING Model L9513 Tri Axle Dump Truck**, powered by Cat C-12, 420HP diesel engine and Roadranger RTO 10 speed transmission, equipped with Ox 16' steel dump body with air tailgate and electric tarp kit, 18,000# front and 46,000# rear axles, 20,000# air lift 3rd axle, 3-position engine brake, air conditioning, and 425/65R22.5 front and 11R22.5 3rd and rear tires. In good condition with fair tires.

**50 TON LOWBOY TRAILER**

**1974 ROGERS 50 Ton Tri Axle Detachable Lowboy Trailer**, equipped with gas pony motor and ground bearing detachable gooseneck, 18' level deck, walking beam suspension, flip 3rd axle, outriggers, tie downs, and 10.00R15 tires. In fair condition with good tires.

**ROUGH TERRAIN CRANE  
AND 60' MANLIFT**

**1985 GROVE Model RT528B, 28 Ton Hydraulic Rough Terrain Crane**, s/n 68549, powershift transmission, equipped with 32'-80' 3-section hydraulic boom with 30' swingaway jib, Johnson 30 ton 3-sheave hook block, Johnson 150# weighted hook, Kruger anti-2 block system, and 20.5x25 tires. In fair condition with good tires. (Engine Removed - Not Running - Will Be Sold With Crane)



**SIMON Model ATC-60, 60', 4x4 Articulating Telescopic Manlift**, s/n Y1078, powered by Deutz diesel engine and hydraulic drive, equipped with 500# capacity, basket rotation, and 18.5/44x16.5 tires. In fair to good condition with fair tires.