

Please visit our website at
www.hunyady.com

**GROTZINGER
EQUIPMENT/
ELK POWER, INC.**

1440 Cowpath Rd. • Hatfield, PA 19440 • 215/361-9099 • Fax: 215/361-9212

NOTICE: After (91) years in business, Grotzinger Equipment, Inc. a multi-line dealer, has been sold to new ownership operating as Elk Power, Inc. In an effort to realign the business, Elk Power is selling equipment surplus to their present needs and will continue to operate as a full service, multi-line distributorship. All equipment must sell to the highest bidder regardless of price!

LOCATION: The auction will be held at Grotzinger's shop and yard facility on Route 120 on the eastern side of St. Mary's.

TERMS: Payment in full is required on sale day by cash, certified funds, or check with a bank letter of guarantee. Sample letter of guarantee: "We hereby guarantee the payment of our customer _____ written on his account up to _____ dollars for purchases at your auction sale on April 15, 2004." All guaranteed checks should be made payable to Hunyady Auction Co.

SALE TAX: The Commonwealth of Pennsylvania considers items being sold to be inventory, therefore it is the obligation of the auction company to collect PA State Sales Tax on all items other than motor vehicles.

FINANCING: Financing available, please contact the auction company for details. Please ask for Susan.

INSPECTION: Items will be available for inspection beginning one week prior from 8:00 a.m. until 5:00 p.m. or sale day morning from 7:00 a.m. until 9:00 a.m.

REMOVAL: After complete payment, all sale items may be removed on sale day as long as the removal activity is not disruptive to the sale and only until 5:00 p.m. Items may also be removed Friday, April 16 and Monday, April 19 thru Thursday, April 22, from 8:00 a.m. to 5:00 p.m. All items must be removed no later than Thursday, April 22, at 5:00 p.m.

SALE SITE DIRECTIONS: INTERSTATE 80 TRAVELING WEST: Take Exit #111 (Route 153/Penfield) At end of ramp bear right onto Route 153 North and proceed approximately (7.3) miles to Route 255 Junction (traffic light). Turn right onto Route 255 North. Continue approximately (18) miles to Route 120 Junction (traffic circle in St. Mary's). Follow signs for Route 120 East and proceed approximately (1.9) miles to sale site on right.

INTERSTATE 80 TRAVELING EAST: Take Exit #101 End of ramp turn left onto Route 255 North and proceed approximately (29) miles to Route 120 Junction (traffic circle in St. Mary's). Follow above directions to sale site on right.

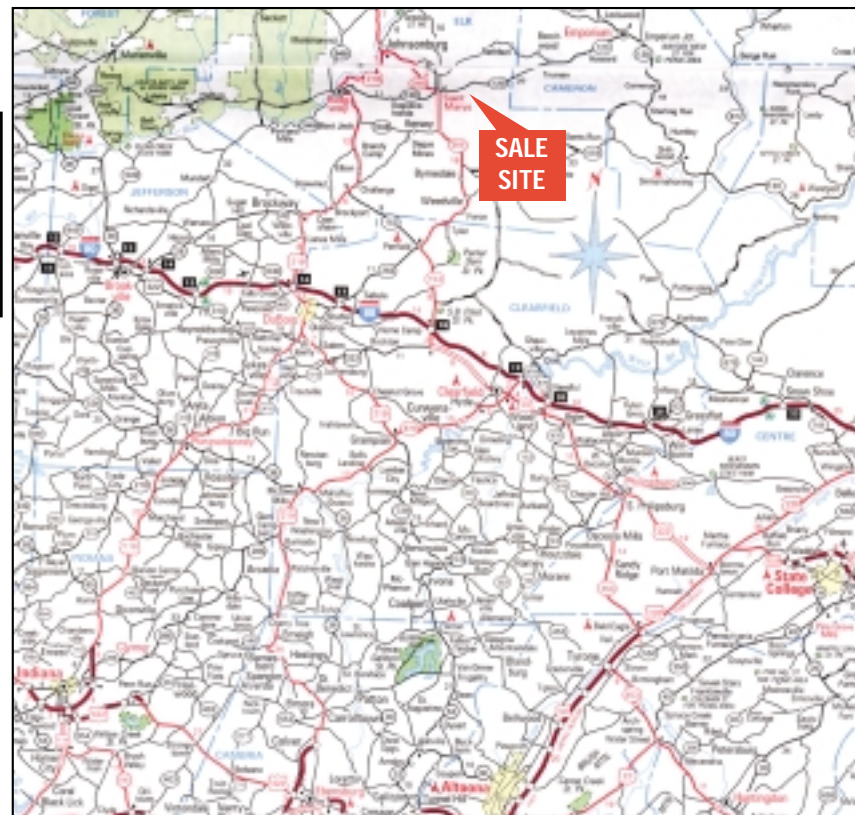
AIRPORT INFORMATION: This area is serviced commercially through the DuBois and Bradford Airports. Rental cars are available. Private air can use the St. Mary's Airport (45'x4,300') For information and rental cars please call (814) 834-4671.

MOTEL INFORMATION: The Towne House Inns (Auction Headquarters) (814) 781-1556 • Best Western (814) 834-0000 • Comfort Inn (814) 834-2030

(1) of (16) Snowmobiles



John Deere GS25 (Unused)



**SALE SITE
PHONE NUMBER:
(814) 834-2065
SALE SITE
FAX NUMBER:
(814) 781-3932**

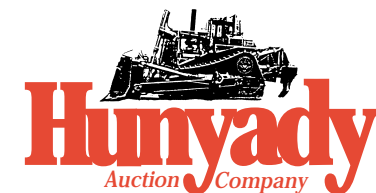
PA AUCTION LICENSE NO: AY000281

ABSOLUTE AUCTION SURPLUS EQUIPMENT



GROTZINGER EQUIPMENT/ELK POWER, INC.
St. Mary's, Pennsylvania
Thursday, April 15, 2004 - 9:00AM

'99 Franklin Z80M-36A



1440 COWPATH RD. • HATFIELD, PA 19440
215/361-9099 • Fax: 215/361-9212



'01 Daewoo Mega MG200TC-III



'99 Daewoo Solar 170-III



'94 JD 5400 and '99 JD 4600

PRE-SORTED
FIRST CLASS MAIL
US POSTAGE
PAID
HAVERTOWN, PA
PERMIT #45

'90 Treefarmer C5D



John Deere 640

'87 Cat 508



(1) of (3) John Deere 540B's
(Chains Sold Separately)

GRAPPLE SKIDDER

1999 FRANKLIN Model Q80M-36A Grapple Log Skidder, s/n 18112, powered by John Deere 6 cylinder, turbo charged diesel engine and powershift transmission, equipped with Franklin model FH-34 hydraulic winch, s/n 8G11V, log grapple, 87" stacking blade, enclosed ROPS cab with heat and forestry package, AM/FM cassette, light package, and 24.5x32 tires. In good to very good condition with good tires. (2,558 Original Hours)

CABLE LOG SKIDDERS

1990 TREEFARMER Model C5D Log Skidder, s/n H501004, powered by Detroit 3 cylinder diesel engine and shuttle transmission, equipped with Franklin model CC-203 hydraulic winch, s/n 8227, 7'6" stacking blade, ROPS canopy with forestry package, and 18.4x28 tires. In good condition with fair to good tires.

1987 CATERPILLAR Model 508 Log Skidder, s/n 9NC00137, powered by Cat 3304 diesel engine and powershift transmission, equipped with stacking blade, winch, and 18.4x34 tires. In good condition with good to very good tires. (200 Hours on Rebuilt Engine)

CATERPILLAR Model 518 Log Skidder, s/n 50S242, powered by Cat 4 cylinder diesel engine and powershift transmission, equipped with Gearmatic hydraulic winch, 7' stacking blade, ROPS canopy with forestry package, and 23.1-26 tires. In fair condition with poor to fair tires.

JOHN DEERE Model 640 Log Skidder, s/n DW060C500763, powered by John Deere diesel engine and powershift transmission, equipped with large winch, stacking blade, and 28Lx26 tires. In good condition with fair to good tires. (500 Hours on Rebuilt Engine and Transmission)

JOHN DEERE Model 540B Log Skidder, s/n SW540BC502691, powered by John Deere 3 cylinder diesel engine and powershift transmission, equipped with John Deere model T54608T winch, 82" stacking blade, enclosed ROPS cab with forestry package, and 18.4x34 tires. In fair to good condition with fair to poor tires.

JOHN DEERE Model 540B Log Skidder, s/n 325870, powered by John Deere 4 cylinder diesel engine and powershift transmission, equipped with hydraulic winch, 7' stacking blade, ROPS canopy with forestry package, and 23.1x26 tires. In fair to good condition with fair tires.

JOHN DEERE Model 540B Log Skidder, s/n 299912T, powered by John Deere 4 cylinder diesel engine and powershift transmission, equipped with John Deere winch, 7' stacking blade, ROPS canopy with forestry package, and 18.4x26 tires. In good condition with good tires. (Engine & Transmission Overhauled Approx. 1 Year Ago)

JOHN DEERE Model 540B Log Skidder, s/n 351596T, powered by John Deere 4 cylinder diesel engine and powershift transmission, equipped with hydraulic winch, 82" stacking blade, ROPS canopy with forestry package, and 23.1-26 tires. (Not Running - Engine Fire)

JOHN DEERE Model 440BC Log Skidder, s/n 223015, powered by John Deere 4 cylinder diesel engine and powershift transmission, equipped with John Deere model 3305 winch, s/n 021073281, 72" stacking blade, ROPS canopy with forestry package, light package, and 18.4x26 tires. In good condition with fair to poor tires.

JOHN DEERE Model 440BC Log Skidder, s/n 122338T, powered by John Deere 4 cylinder diesel engine and powershift transmission, equipped with John Deere 3305 winch, s/n 026778T, 72" stacking blade, ROPS with forestry package, and 18.4x26 tires. In good condition with good tires.

JOHN DEERE Model 440B Log Skidder, s/n UNKNOWN, powered by John Deere 4 cylinder diesel engine and powershift transmission, equipped with John Deere model 3303 winch, 72" stacking blade, ROPS canopy with forestry package, and 18.4x26 tires. In fair condition with fair to poor tires.

JOHN DEERE Model 440B Log Skidder, s/n 172887T, powered by John Deere engine and powershift transmission, equipped with rear hydraulic winch, 72" stacking blade, ROPS canopy, and 18.4x26 tires. In fair condition with poor tires.

TIMBERJACK Model 230E Log Skidder, s/n 801154, powered by Detroit 3-71 diesel engine and shuttle transmission, equipped with Eaton model 2511804358 PTO driven winch, s/n 220503, 82" stacking blade, ROPS canopy with forestry package, and

18x34 tires. In fair condition with fair to poor tires.

TIMBERJACK Model 230-GS Log Skidder, s/n 900163, powered by Detroit 3-71 diesel engine and shuttle transmission, equipped with Eaton model 2511804358 PTO driven winch, 82" stacking blade, ROPS canopy with forestry package, and 18x34 tires. In fair to good condition with poor tires.

TIMBERJACK Model 230-GS Log Skidder, s/n 784631, powered by Detroit 3-71 diesel engine and shuttle transmission, equipped with Eaton model 2511804358 PTO driven winch, 82" stacking blade, ROPS canopy with forestry package, and 18.4x26 tires. In fair condition with poor front and good rear tires.

TIMBERJACK Model 380 Log Skidder, s/n 381750, powered by Detroit 3-71 diesel engine and powershift transmission, equipped with Gearmatic model WS201 hydraulic winch, 84" stacking blade, ROPS canopy with forestry package, and 18x34 tires. In fair condition with poor tires.

TIMBERJACK Model 230D Log Skidder, s/n 781005, powered by Detroit 3-53 diesel engine and shuttle transmission, equipped with Hercules winch, 82" stacking blade, ROPS canopy with forestry package, and 18.4x6 tires. In good condition with fair tires.

TIMBERJACK Model 230D Log Skidder, s/n 783354, powered by Detroit 3-53 diesel engine and shuttle transmission, equipped with stacking blade, ROPS canopy, and 18.4x34 tires. In good condition with good to very good tires. (400 Hours On Out of Frame Rebuild)

TIMBERJACK Model 225C Log Skidder, s/n 777318 (For Parts Only) (Engine Missing Parts, No Transmission, Missing Winch)

TREEFARMER Model C5D Log Skidder, s/n 5807-206, powered by Detroit 4 cylinder diesel engine and shuttle transmission, equipped with Hawker Siddeley CAN-C4B-20B winch, 90" stacking blade, enclosed ROPS cab with forestry package, and 18.4x26 tires. In fair condition with (2) fair to good and (2) very good tires.

TREEFARMER Model C5D Log Skidder, s/n 5101-020, powered by Detroit 3-53 diesel engine and shuttle transmission, equipped with Hawker Siddeley model CAV-CAR20 winch, s/n 04767, 90" stacking blade, ROPS canopy with forestry package, and 18.4-26 tires. In good condition with good tires. (Not Running)

CLARK Model Ranger 666 Log Skidder, s/n 513H-1447-CAC, powered by Detroit 4 cylinder diesel engine and shuttle transmission, equipped with Clark model 11-1 hydraulic winch, s/n 92542XJ, 80" stacking blade, and ROPS canopy with forestry package. In good condition with fair to poor tires.

FRANKLIN Model 142AL Log Skidder, s/n 7547, powered by diesel engine and powershift transmission, equipped with Franklin model 40 PTO driven winch, 82" stacking blade, ROPS canopy with forestry package, light package, and 23.1x26 tires. In fair condition with poor tires.

FRANKLIN Model 170 Log Skidder, s/n UNKNOWN, powered by Detroit 4-71 diesel engine and shuttle transmission, equipped with 7' straight blade, winch, and ROPS canopy with forestry package. In poor condition with poor tires.

FRANKLIN Log Skidder, s/n UNKNOWN, powered by Detroit 3-53 diesel engine and 4 speed transmission, equipped with Franklin PTO driven winch, 72" stacking blade, ROPS canopy with forestry package, and 18.4x26 tires. (Parts Only)

INTERNATIONAL Model S7C Log Skidder, s/n 3920513U001149, powered by Detroit 3-53 diesel engine and 4 speed transmission, equipped with Carco model 100 winch, 7' stacking blade, ROPS canopy with forestry package, and 16.9x30 tires. In fair condition with good tires.

INTERNATIONAL Model ST-B302-509-U Log Skidder, s/n 03120, powered by Detroit 3 cylinder diesel engine and powershift transmission, equipped with Gearmatic model 19 winch, 84" stacking blade, ROPS canopy with forestry package, and 16.9x30 tires. In fair to good condition with fair to poor tires.

TAYLOR Model S81-U Log Skidder, s/n S-110-561, powered by Detroit 3-53 diesel engine and 5 speed transmission with 3 speed transfer case, equipped with Gearmatic 19 winch, s/n 12588, 7' stacking blade, ROPS canopy with forestry package, and 18.4x28 tires. In fair to good condition with fair tires.

JOHN DEERE 440 Skidder Frame, with transmission, winch, axles, wheels, stacking blades, and ROPS canopy. (Parts)

TIMBERJACK Skidder Frame, with ROPS canopy. (Parts)

SKIDDER ACCESSORIES AND PARTS

Tire Chains • PRENTICE Log Grapple • ESCO Hydraulic Grapple (Parts) • JOHN DEERE Grapple Attachment (John Deere 640 Skidder) • (4) GEARMATIC Model 19 Winches (One For Parts) • JOHN DEERE Model 4000 Winch • (4) JOHN DEERE 3305 Winches • (2) JOHN DEERE 540B or 540D Winches • TIMBERJACK Hercules Winch • JOHN DEERE 3305 Winch • Log Arches • (12) Stacking Blades: (1) 540A, (4) 440A and 440B, (3) 540B, (2) 440C, (1) TREEFARMER C-7: (1) 640



John Deere 440B



(1) of (5) Timberjack 230's



'91 Bell SuperTrack



Grot 11



John Deere 540A

FELLER BUNCHER AND LOG FORWARDER

1991 BELL Model SuperTrack Crawler Feller Buncher, s/n BCH3851, powered by Deutz 4 cylinder diesel engine and hydrostatic transmission, equipped with 24" feller buncher, enclosed ROPS cab with forestry package, and 18" SBG pads. In fair to good condition with fair undercarriage.

JOHN DEERE Model 540A Articulated Log Forwarder, s/n 223888T, powered by John Deere 6 cylinder diesel engine and powershift transmission, equipped with Prentice 3-section hydraulic log boom with hydraulic grapple and rider console, 72" push blade, (2) hydraulic outriggers, operator protection with sweeps, and 28L-26 tires. In fair condition with poor front and good to very good rear tires.

BARKO Hydraulic Log Loader, s/n UNKNOWN, equipped with operator console, hydraulic boom with log grapple, and (2) hydraulic outriggers. (Not Mounted)

HYDRAULIC EXCAVATORS, ATTACHMENTS, AND TRENCH BOXES

1995 DAEWOO Model DH280 Hydraulic Excavator, s/n 2071, powered by Daewoo 6 cylinder diesel engine and hydraulic drive, equipped with 10' dipper stick, hydraulic plumbing, light package, 14'10" crawlers, and 32" TBG pads. In good condition with good undercarriage.

1999 DAEWOO Model Solar 170-III Hydraulic Excavator, s/n 0185, powered by Daewoo diesel engine and hydraulic drive, equipped with 10' dipper stick, 42" digging bucket with side cutters, enclosed ROPS cab with heat and air conditioning, 13'8" crawlers, and 28" TBG pads. In good condition with good undercarriage.

1998 DAEWOO Model Solar 70-III Hydraulic Excavator, s/n 0163, powered by Daewoo 4 cylinder diesel engine and hydraulic drive, equipped with 7' dipper stick, 36" digging bucket with side cutters, 7'4" backfill blade, enclosed ROPS cab, light package, 9'2" crawlers, and 24" TBG pads. In good condition with good undercarriage. (00,882 Original Hours)

CASE Model 880B Hydraulic Excavator, s/n 6201832, powered by Detroit 4 cylinder diesel engine and hydraulic drive, equipped with 9' dipper stick, 36" digging bucket, 11'3" crawlers, and 24" TBG pads. In fair condition with poor to fair undercarriage.

DAEWOO Undercarriage (Daewoo 170) (Unused) • DAEWOO Boom (Cracked) (Daewoo 220) • (14) New and Used GEITH Buckets: 18", 24", 36", 42", 52" (Daewoo Model 70,130, 170, 230, & 280 Excavators) • Hydraulic Wrist Attachment (Daewoo Excavator)

GME 9 Cubic Yard Gravel Box • GME 12'x24' Trench Box with 36" and 48" spreaders (Unused) (With Certificates)

RUBBER TIRED LOADERS AND ATTACHMENTS

2001 DAEWOO Model Mega MG 200TC-III Rubber Tired Loader, s/n 1043, powered by 6 cylinder diesel engine and powershift transmission, equipped with Buck 48" grapple forks, general purpose loader bucket, hydraulic beyond, rear bumper counterweight, enclosed ROPS cab with heat and air conditioning, light package, and 20.5R25 tires. In good to very good condition with good to very good tires. (274 Original Hours) (Grapple Forks To Be Sold Separately)

1996 KOMATSU Model WA180-1 Rubber Tired Loader, s/n A75854, powered by Komatsu S6D102-1 remanufactured diesel engine and powershift transmission, equipped with general purpose loader bucket with bolt-on cutting edge, enclosed ROPS cab with heat and light package, and 17.5x25 foam filled slick tires. In good condition.

1996 KOMATSU Model WA180-1 Rubber Tired Loader, s/n A76107, powered by Komatsu S6D102-1 remanufactured diesel engine and powershift transmission, equipped with general purpose loader bucket with bolt-on cutting edge, enclosed ROPS cab with heat and light package, and 17.5x25 tires. In good condition with good tires.

1995 CATERPILLAR Model 914G Rubber Tired Loader, s/n 9WM00217, powered by Cat 4 cylinder diesel engine and powershift transmission, equipped with general purpose loader bucket, enclosed ROPS cab with light package and 17.5x25 tires. In fair condition with very good tires.

FIAT ALLIS Model 645B Rubber Tired Loader, s/n 11Y06364, powered by Fiat Allis 6 cylinder diesel engine and powershift transmission, equipped with general purpose bucket, rear bumper counterweight, enclosed ROPS cab, light package, and 20.5x25 tires. In fair to poor condition with good front and poor rear tires.

FIAT ALLIS Model 545B Rubber Tired Loader, s/n 2535, powered by Detroit 4 cylinder diesel engine and powershift transmission, equipped with general purpose loader bucket with bolt on cutting edge, enclosed ROPS cab, and 17.5x25 tires. In fair to good condition with good tires.

MASSEY FERGUSON Model 55C Rubber Tired Loader, s/n 00292, powered by 6 cylinder diesel engine and powershift transmission, equipped with general purpose bucket, enclosed ROPS cab, light package, and 20.5x25 tires. In fair condition with fair to good tires.

SCOOPMOBILE Model H Three-Wheeled Loader, s/n UNKNOWN, powered by 6 cylinder gas engine and direct drive transmission, equipped with general purpose bucket, enclosed cab, light package, and 14.00-24 front and 9.00-20 rear tires. In fair condition with fair to poor tires.

MICHIGAN Model 275B Rubber Tired Loader, s/n 425C679C, powered by Cummins diesel engine and powershift transmission, equipped with general purpose loader bucket with teeth, light package, and 29.5x29 tires. In poor condition with fair to poor tires.

JOHN DEERE Model 544 Rubber Tired Loader Frame, s/n 076725, with transmission, axles, grapple forks, and ROPS canopy. (Parts)

CATERPILLAR Model 910 Rubber Tired Loader, s/n 80U1787, powered by Cat diesel engine and powershift transmission, equipped with general purpose loader bucket, ROPS post with canopy, and 15.5x25 tires. In fair to poor condition with poor tires. (Not Running)

90" Loader Bucket • 42" Fork Attachment (Fiat Allis 545) • ROCKLAND Quick Coupler (John Deere 544)



'95 Daewoo DH280
(Grapple Not Being Sold)



'98 Daewoo Solar 70-III



(1) of (2) '96 Komatsu WA 180-1's



Fiat Allis 645B



'95 John Deere 310D

4X4 EXTEND-A-HOE
1999 JOHN DEERE Model 310D, 4x4 Tractor Loader Extend-A-Hoe, s/n T0310DG812631, powered by John Deere diesel engine and shuttle transmission, equipped with general purpose loader bucket, 24" digging bucket, enclosed ROPS cab with heat, light package, (2) hydraulic outriggers, 12x16.5 front and 18.4x24 rear tires. In good condition with good tires. (Meter Reads 1,180 Hours)
JOHN DEERE Model 410D Extending Dipper Stick

SKID STEER LOADERS AND ATTACHMENTS
1998 BOBCAT Model 873 Skid Steer Loader, s/n 514116034, powered by 4 cylinder diesel engine and hydrostatic transmission, equipped with 79" general purpose loader bucket, manual quick disconnect, hydraulic beyond, enclosed cab, air conditioning, heat, light package, and 12x16.5 tires. In good condition with good tires.
1996 BOBCAT Model 763 Skid Steer Loader, s/n 512220233, powered by Kubota 4 cylinder diesel engine and hydrostatic transmission, equipped with 67" general purpose loader bucket, auxiliary hydraulics, light package, and 10x16.5 tires. In fair to good condition with (1) good and (3) fair to poor tires.

1995 JOHN DEERE Model 8875 Skid Steer Loader, s/n M08875X020214, powered by John Deere 3 cylinder diesel engine and hydrostatic transmission, equipped with 82" general purpose loader bucket with bolt-on cutting edge, side mounted counterweights, auxiliary hydraulics, enclosed ROPS cab, light package, and 12x16.5 tires. In fair to good condition with good tires.
1996 THOMAS Model A409T233HDDH Skid Steer Loader, s/n LH001377, powered by Kubota 6 cylinder diesel engine hydrostatic transmission, equipped with 72" general purpose loader bucket, auxiliary hydraulics, light package, and 12x16.5 tires. In good condition with fair to good tires.
CASE Model 1845 Skid Steer Loader, s/n 5407264, powered by Case 4 cylinder diesel engine and hydrostatic transmission, equipped with 72" general purpose loader bucket, ROPS canopy, and 12x6.5 tires. In fair condition with poor tires.

CASE Model 1740 Skid Steer Loader, s/n UNKNOWN, powered by 4 cylinder diesel engine and hydrostatic transmission, equipped with 66" general purpose bucket, ROPS canopy, light package, and 10x16.5 tires. In fair condition with poor tires.
BOBCAT 811 Backhoe Attachment, s/n 630003676, 12' digging bucket with side cutters. In very good condition. (Unused) • BOBCAT LR68 Hydraulic Landscape Rake, s/n 063002620 (Unused) • BOBCAT 72 Hydraulic Sweeper, s/n 783710129 (Unused) • BOBCAT LT204, 6' Trencher Attachment, s/n 42401843 • BOBCAT 15C Hydraulic Auger, s/n 944201839, 26" and 9" augers (unused) and 14" and 6" augers. In good to very good condition • WOODS 52764, 48" Fork Attachment, s/n C107984. In good condition • BOBCAT Fork Attachment Mast • Dozer Blade Attachment • (2) BOBCAT 60" Loader Buckets (Unused) • (6) BOBCAT Digging Buckets With Side Cutters: (1) 24", (2) 18", (1) 16", and (2) 12" (Unused) • (2) BOBCAT 3-Point Hitch Mounting Brackets • (4) BOBCAT 873 Solid Tires

CRAWLER TRACTORS, CRAWLER LOADERS, AND ATTACHMENTS
1995 FIAT ALLIS Model FD9 Crawler Tractor, s/n D939T20792, powered by Cummins 6 cylinder diesel engine and powershift transmission, equipped with 6-way blade, Allied rear winch, fairlead, ROPS canopy with forestry package, light package, and 18" SBG pads. In good condition with good undercarriage.
JOHN DEERE Model 850D Crawler Tractor, s/n 331812T, powered by John Deere 6 cylinder diesel engine and hydrostatic transmission, equipped with angle blade with dual tilt, ROPS canopy with sweeps and forestry package, tow bar, light package, and 24" SBG pads. In good condition with fair to poor undercarriage.
CATERPILLAR Model D5 Crawler Tractor, s/n 95J314, powered by Cat 6 cylinder diesel engine and powershift transmission, equipped with angle blade, Hyster D6N rear mounted winch, ROPS canopy with sweeps, and 18" SBG pads. In fair condition with poor undercarriage.
CATERPILLAR Model D4 Crawler Tractor, s/n UNKNOWN, powered by Cat 4 cylinder pony start diesel engine and direct drive transmission, equipped with angle blade and Hyster D4N hydraulic winch. In fair condition with fair undercarriage.

JOHN DEERE Model 450 Crawler Loader, s/n 003721U, powered by John Deere 4 cylinder diesel engine and powershift transmission, equipped with general purpose bucket. (Not Running - Parts Only)
JOHN DEERE Model 450 Crawler Loader, s/n 003738U, equipped with general purpose bucket. (Parts Only - No Engine Or Transmission)
JOHN DEERE Crawler Loader Frame, s/n SNE745000778U, with transmission and tracks. (Parts Machine)
(2) Log Forks with hydraulic clamps (John Deere 450) • 78" 4-in-1 Bucket (John Deere 755) (Poor)

FORKLIFTS
1997 INGERSOLL-RAND Model VR-90B, 4x4 9,000# Telescopic Rough Terrain Forklift, s/n 148933, powered by Perkins 4 cylinder diesel engine and powershift transmission, equipped with 3-stage boom, mast tilt, 40' reach, 48" forks, 4-wheel and crab steering, house leveling, ROPS canopy, light package, and 13.00x24 tires. In good condition with good tires. (1,253 Original Hours)
IR VR-90 Attachments: Block Fork Attachment • Loader Bucket Attachment
FORD Model 355DT 6,000# Rough Terrain Forklift, s/n 3551022, powered by Ford diesel engine and 4 speed transmission, equipped with 264" 3-stage mast, side shift, 48" forks, operator protection, 16.9x24 front and 235/85R16 rear tires. In fair to good condition with fair to poor tires.

1989 YALE Model GD5680LCSBF098 Pneumatic Tired Forklift, s/n N476P09, powered by 6 cylinder diesel engine and shuttle transmission, equipped with 145" 2-stage mast, 48" forks, side shift, mast tilt, operator protection, light package, 7.50x15 front and 7.00x12 rear tires. In good condition with good tires.
HYSTER Model Pioneer 80, 7,650# Forklift, s/n A018D0459Y, powered by 4 cylinder diesel engine and direct drive transmission, equipped with 177" 3-stage mast, 60" forks, FOPS canopy, light package, and 8.25x20 tires. In poor condition with poor tires.

ALLIS CHALMERS Model FP30-24, 2,300# Pneumatic Tired Forklift, s/n 28899000, powered by 4 cylinder LP gas engine and shuttle transmission, equipped with 178" 3-stage mast, mast tilt, 48" forks, FOPS canopy, and 6.50x10 front and 5.00x8 rear tires. In fair condition with fair to poor tires.
YALE Forklift, s/n UNKNOWN, powered by 4 cylinder gas engine and hydrostatic transmission, equipped with 2-stage mast, mast tilt, light package, operator protection, 28x12-15 front and 6.00-9 rear tires. In fair condition with good tires.

1973 INTERNATIONAL Model F5070 Tandem Axle Rollback Truck, powered by Cummins 6 cylinder diesel engine and Spicer SST-6+1, 6 speed transmission with 2 speed rear, equipped with 25' wood rollback body, Ramsey bed winch, 212" wheelbase, and 12.00R20 front and 10.00x20 rear tires. In fair condition with good tires.
1987 CHEVROLET Model Silverado 30 Single Axle Rollback Truck, powered by Chevrolet 454, 8 cylinder gas engine and 4 speed transmission, equipped with Jerr-Dan model 17AWL, 17' aluminum rollback body, s/n 16506, Ramsey bed winch, dual fuel tanks, aluminum wheels, air conditioning, AM/FM radio, and 235/65R16 tires. In good condition with good tires.
1981 CHEVROLET Model C70 Single Axle Rollback Truck, powered by Detroit 8.2L diesel engine and 5 speed transmission with 2 speed rear, equipped with 20' wood rollback body, bed winch, and 10.00x20 tires. In fair condition with good tires.

1985 FORD Model F-350, 4x4 Single Axle Flatbed Truck, powered by 8 cylinder diesel engine and 4 speed transmission, equipped with 9' wood flatbed and 235/85R16 tires. In good condition with good tires.
1976 INTERNATIONAL Model F-5070 Tri-Axle Dump Truck, powered by Cummins 6 cylinder diesel engine and Fuller Roadranger 10 speed transmission, equipped with Somerset 18' aluminum dump body, airlift 3rd axle, and 10.00x20 tires. In poor condition with poor tires.
INTERNATIONAL Model 2000 Single Axle Dump Truck, powered by Cummins diesel engine and 5 speed transmission with 2 speed rear, equipped with 9' steel dump body. In poor condition with poor tires.

ROLLBACK, FLATBED, AND DUMP TRUCKS
1973 INTERNATIONAL Model F5070 Tandem Axle Rollback Truck, powered by Cummins 6 cylinder diesel engine and Spicer SST-6+1, 6 speed transmission with 2 speed rear, equipped with 25' wood rollback body, Ramsey bed winch, 212" wheelbase, and 12.00R20 front and 10.00x20 rear tires. In fair condition with good tires.
1987 CHEVROLET Model Silverado 30 Single Axle Rollback Truck, powered by Chevrolet 454, 8 cylinder gas engine and 4 speed transmission, equipped with Jerr-Dan model 17AWL, 17' aluminum rollback body, s/n 16506, Ramsey bed winch, dual fuel tanks, aluminum wheels, air conditioning, AM/FM radio, and 235/65R16 tires. In good condition with good tires.
1981 CHEVROLET Model C70 Single Axle Rollback Truck, powered by Detroit 8.2L diesel engine and 5 speed transmission with 2 speed rear, equipped with 20' wood rollback body, bed winch, and 10.00x20 tires. In fair condition with good tires.
1985 FORD Model F-350, 4x4 Single Axle Flatbed Truck, powered by 8 cylinder diesel engine and 4 speed transmission, equipped with 9' wood flatbed and 235/85R16 tires. In good condition with good tires.

1976 INTERNATIONAL Model F-5070 Tri-Axle Dump Truck, powered by Cummins 6 cylinder diesel engine and Fuller Roadranger 10 speed transmission, equipped with Somerset 18' aluminum dump body, airlift 3rd axle, and 10.00x20 tires. In poor condition with poor tires.
INTERNATIONAL Model 2000 Single Axle Dump Truck, powered by Cummins diesel engine and 5 speed transmission with 2 speed rear, equipped with 9' steel dump body. In poor condition with poor tires.

TRUCK TRACTORS AND LOWBOY TRAILERS
1993 MACK Model CH613 Tandem Axle Truck Tractor, powered by Mack E7-400 diesel engine and Fuller 13 speed transmission, equipped with 12,000# front and 40,000# rear axles, 218" wheelbase, wetline, sleeper body, sliding 5th wheel, air ride suspension, 2-stage engine brake, dual 100 gallon aluminum fuel tanks, aluminum wheels, cruise control, air conditioning, heated power mirrors, and 11R24.5 tires. In fair condition with good tires.
1988 MACK Model RW700GK Tandem Axle Truck Tractor, powered by Mack 8 cylinder diesel engine and 10 speed transmission, equipped with 214" wheelbase, 36" sleeper, wetline, air slide 5th wheel, Dynatard engine brake, dual 100 gallon aluminum fuel tanks, Budd aluminum front wheels, heated mirrors, and 11R22.5 tires. In fair condition with fair to good tires.
1980 GMC Model Astro Tandem Axle Cabover Truck, powered by Cummins 6 cylinder diesel engine and 10 speed transmission, equipped with 12,000# front and 38,000# rear axles, 142" wheelbase, sleeper cab, fixed 5th wheel, and 11R24.5 tires. In poor condition with fair to good tires. (Not Running)
1992 WITZCO CHALLENGER Model RG-35, 35 Ton Tandem Axle Lowboy Trailer, equipped with ground bearing detachable gooseneck, 22' level deck, 30" transition ramp, 8' over wheels, tie down rings, outriggers, and 11R22.5 tires. In fair to good condition with fair to good tires.
RÖGERS Tandem Axle Lowboy Trailer, equipped with detachable gooseneck, 22' level deck, 7' over wheels, 2' beavertail with ramps, and 10.00R15 tires. In fair condition with good tires.
GIL 45' Rigid Neck Tandem Axle Lowboy Trailer, equipped with 22' level deck, 87" deck over wheels, 4' beavertail with ramps, 64" upper deck, and 8.25x15 tires. In fair to good condition with good tires.

PICKUP TRUCKS
1997 FORD Model Ranger XLT, 4x4 Extended Cab Pickup Truck, powered by 6 cylinder gas engine and automatic transmission, equipped with 6' bed, bed liner, AM/FM cassette, and 205/75R15 tires. In good condition with fair tires.
1990 FORD Model F-150 Pickup Truck, powered by 6 cylinder gas engine and 5 speed transmission, equipped with 8' bed with bed liner, dual fuel tanks, cruise control, AM/FM radio, and 235/75R15 tires. In fair to poor condition with fair tires.

CONTRACTORS TOOLS
GOOSEN Bale Chopper, 11HP gas • (2) HOMELITE D630CD DX Series Gas Powered String Trimmers (Unused) • HOMELITE Z725CE Gas Powered String Trimmer (Unused) • JOHN DEERE LT20PVD-H3J Hedge Trimmer (Unused) • JOHN DEERE LT20PVD-H7J Hedge Trimmer (Unused) • JOHN DEERE R624L, 24" Roto Tiller, 6HP gas • (Not Running) • JOHN DEERE A350 Portable Space Heater • JOHN DEERE A150 Portable Space Heater • 40" Aluminum Extension Ladder • (2) Wheelbarrows • HOMELITE 111B-1B Blower, Briggs & Stratton 3.5HP gas (Unused) • (2) HOMELITE HSM750, 2" Submersible Pumps, 1HP, 115 volt (Unused) • (2) HOMELITE HSM400, 2" Submersible Pumps, 1/2HP, 115 volt (Unused) • HOMELITE HDP2, 2" Diaphragm Pump, Honda 4 cylinder gas (Unused) • HOMELITE 120S3-1B, 3" Pump, Briggs & Stratton 8HP gas (Unused) • HOMELITE HDP3, 3" Diaphragm Pump, Honda 5.5HP gas (Unused) • HOMELITE 120TP3-1C, 3" Pump, Briggs & Stratton 8HP gas (Unused) • HOMELITE 121TP2-1C, 2" Pump, Briggs & Stratton 5HP gas (Unused) • JOHN DEERE CS81, 20" Chain Saw (Unused) • (2) JOHN DEERE CS71, 24" Chain Saws (Unused) • (2) JOHN DEERE CS81, 20" Chain Saws (Unused) • (6) HOMELITE MP38 Demolition Saws (Unused) • (5) HOMELITE MP88 Demolition Saws (Unused) • JOHN DEERE 880MS Demolition Saw (Unused)

UTILITY TRACTORS AND 3-POINT HITCH ATTACHMENTS
1999 JOHN DEERE Model 4600, 4x4 Utility Tractor, s/n LV4600H267610, powered by John Deere 3 cylinder diesel engine and hydrostatic transmission, equipped with 6' mower deck, auxiliary hydraulics, PTO, 3-point hitch, rollbar, 27x10.5-15 front and 18.00x20 rear tires. In good to very condition with good tires. (490 Original Hours)
1994 JOHN DEERE Model 5400, 4x4 Utility Tractor, s/n LV5400D341147, powered by John Deere 3 cylinder diesel engine and 3 speed transmission with reverse, equipped with 3-point hitch, PTO, hydraulic outlets, roll bar, light package, 11.2-24 front and 16.9-30 rear tires. In good condition with good tires.
1988 JOHN DEERE Model 2155 Utility Tractor, s/n L02155A633962, powered by John Deere 3 cylinder diesel engine and shuttle transmission, equipped with 3-point hitch, PTO, hydraulic outlets, tow bar, rollbar, light package, and 27x9.50-15 front and 16.9x30 rear tires. In good condition with good tires.
RHINO Model T224 Utility Tractor, s/n 0158, powered by 2 cylinder diesel engine and shuttle transmission, equipped with 3-point hitch, PTO, rollbar, light package, 6.00x12 front and 8.5x24 rear tires. In good condition with very good tires.
ALLIS CHALMERS Model 190XTL Utility Tractor, s/n UNKNOWN, powered by Allis Chalmers 6 cylinder diesel engine and 8 speed shuttle transmission, equipped with 3-point hitch, PTO, drawbar, dual hydraulic outlets, front counterweight and rear wheel weights, enclosed cab, air conditioning, light package, and 11.00x16 front and 18.4x34 rear tires. In fair condition with fair to good tires.
JOHN DEERE 420 Loader Attachment, s/n W00420X025295, 62" loader bucket. In very good condition. (Unused) • RHINO TX110213 PTO Driven Hydraulic Batwing Mower, s/n 11058, (3) 4' brush mowers, hydraulic raise, and 26x12.00-12 transport tires. In very good condition with very good tires. (Unused) • INTERNATIONAL IM602A, 6' 3-Point Hitch PTO Driven Brush Mower. In good condition • WOODS RM59-3, 6' PTO Driven 3-Point Hitch Brush Mower, s/n 177410, side discharge. In good condition • LAND PRIDE 25-60, 5' PTO Driven Brush Mower. In good condition • RHINO SE5, 5' 3-Point Brush Mower, s/n 28047 (Unused) • CUB CADET 46" Mower Deck, s/n 372346 • CUB CADET 46" Mower Deck, s/n 468421 • WOODS SB74-2, 74" PTO Driven Snowblower Attachment, s/n 20984 • WOODS 5' PTO Driven 3-Point Hitch Flail Mower • RHINO PM48, 48" Brush Hog, s/n 10549, Briggs & Stratton 8HP gas engine • TAYLOR-WAY 317202, 72" PTO Driven 3-Point Hitch Finish Mower, s/n 1059727H, with rear discharge • (2) RHINO FM72 PTO Driven 3-Point Hitch Grooming Mowers, s/n 15571 and UNKNOW • RHINO PM48 Tow Behind Brush Mower, s/n 10527, powered by Briggs & Stratton 8HP gas engine, 16x4.00 tires. In good condition • LANDPRIDE PR2572, 72" PTO Driven 3-Point Hitch Power Stone Rake, s/n 171427 • LANDPRIDE 42" PTO Driven Roto Tiller, s/n 369538 • KUHN EL50H130, 53" PTO Driven 3-Point Hitch Roto Tiller, s/n A0404 • RHINO SH80, 80" PTO Driven 3-Point Hitch Roto Tiller • JOHN DEERE 00051 3-Point Hitch Hydraulic Posthole Digger, s/n 002342HC • FORD Tractor 12' Forklift Attachment (Unused) • (2) RHINO LR35, 8' 3-Point Hitch Stone Rakes, with manual angle (Unused) • WOODS 8" 3-Point Hitch PTO Driven Snow Blower, s/n 19416. In good condition • ERSKINE 780FM, 80" PTO Driven Snow Blower, s/n 4110, hydraulic angle and tilt. In good condition • JOHN DEERE 37" Snowblower Attachment, s/n G37AJ423781M • JOHN DEERE 37" Snowblower Attachment, s/n M0037AX538571 • JOHN DEERE 37" Snowblower Attachment, s/n G37AJ424976M • JOHN DEERE 42" Snowblower Attachment, s/n M03250X597575 • JOHN DEERE 47" PTO Driven Quick Attach Snowblower Attachment, s/n M01471X071156, hydraulic lift and hydraulic chute angle • JOHN DEERE 42" Snow Plow Blade, s/n M00269X542080 • ROCKLAND Plow Blade with quick disconnect • JOHN DEERE 83" Snowplow Blade with extensions • 48" Snowblower Attachment, s/n 135451 • 43" Fork Attachment, with hydraulic clamp (Unused) (Hydraulic Cylinder Bent) • 48" Fork Attachment (Fits John Deere) (Unused) • (6) Sets of 48" Forks (No Frames) • LAND PRIDE 7' 3-Point Hitch Backfill Blade (Unused) • LANDPRIDE RB1572, 6' 3-Point Hitch Backhoe Blade, s/n L110962 • (4) RHINO 500, 7' 3-Point Hitch Backfill Blades, with manual angle (Unused) • WOODS RB5-1, 59" 3-Point Hitch Back Blade, s/n 18632-1 • WOODS 59" 3-Point Hitch Back Blade • JOHN DEERE 6' 3-Point Hitch Backfill Blade, s/n M00045X033335 (Unused) • HERD 1200C 3-Point Hitch Fertilizer Spreader • Disc Harrow • JOHN DEERE 73" Quick Attach Loader Bucket • JOHN DEERE 5' Quick Attach Loader Bucket • JOHN DEERE 6' Quick Attach Loader Bucket • MILLCREEK 50 PTO Driven Manure Spreader, s/n 1682, 3'x7' bed, drag slat conveyor, and H78x14 tires. In fair condition with poor tires • (3) Tow Behind PTO Driven Manure Wagons. Poor • 3-Point Hitch Corn Planter

QUADS AND SNOWMOBILES
2002 ARTIC CAT Model A2002ATM4BUSG 500, 4x4 All Terrain Vehicle, automatic (Unused)
2002 ARTIC CAT Model A2002ISM4VSR 500, 4x4 All Terrain Vehicle (Unused)
2001 ARTIC CAT Model A2001ATM4BUSG 500, 4x4 All Terrain Vehicle, automatic (Unused)
(2) 2000 ARTIC CAT Model A2000ATM4AUSR 500, 4x4 All Terrain Vehicles (Unused)
2000 ARTIC CAT Model A2000ATM4BUSR 500, 4x4 All Terrain Vehicle, automatic (Unused)
2000 ARTIC CAT Model 500, 4x4 All Terrain Vehicle. In very good condition with very good tires. (010 Original Miles)
1998 ARTIC CAT Model 454, 4x2 All Terrain Vehicle. In good condition with good tires.
(2) 2002 ARTIC CAT Model 660 4-Stroke Snowmobiles (Unused)
2002 ARTIC CAT Model 660 4-Stroke Snowmobile. In good condition. (00,242 Original Miles)
2002 ARTIC CAT Model 660 4-Stroke Snowmobile. In very good condition. (00,002 Original Miles)
2002 ARTIC CAT Model ZR800 Snowmobile. In good condition.
2001 ARTIC CAT Model Panther Touring Classic Snowmobile. In very good condition. (003 Original Miles)
2001 ARCTIC CAT Model ZR800 Snowmobile. In good condition.
2001 ARTIC CAT Model ZL800 Snowmobile. In good condition.
2001 ARTIC CAT Model 800 Snowmobile. In good condition.
2000 ARTIC CAT Model Bearcat 550 Snowmobile. In good condition. (00,216 Original Miles)
1999 ARTIC CAT Model ZL500 Snowmobile. In good condition.
SKI DOO Model Formula STX Snowmobile. In good condition.
1998 YAMAHA Model 500 Venture Snowmobile. In good condition. (726 Original Miles)
1994 ARTIC CAT Model Prowler Snowmobile. In good condition. (Engine Cover Damaged)
1992 ARTIC CAT Model ZRT800 Snowmobile. In good condition.
1995 ARTIC CAT Model Puma Snowmobile. In good condition.

RECREATIONAL VEHICLE TRAILERS
(2) 2004 NEWMAN 12' Sled-Bed Single Axle Tag-A-Long Trailers. In very good condition with very good tires.
(4) 2004 NEWMAN 10' Sled-Bed Single Axle Tag-A-Long Trailers. In very good condition with very good tires.
2003 NEWMAN Model 1ATV78A-11, 8'x7' Sport Series Single Axle Aluminum Trailer. In very good condition with very good tires.
2001 LOADRITE Model PSM16T-TRS2, 8'-6"x16" Tandem Axle Aluminum Tilt Deck Trailer. In good condition with good tires.
1995 CROSS COUNTRY Model 818TES, 8'x18" Tandem Axle Tow Behind Trailer. In good condition with good tires.
2003 NEWMAN TREDBED Model 580 Sport Series Single Axle Tow Behind Trailer, equipped with 5'x8'6" aluminum deck, 24" aluminum sides and front, 42" aluminum tailgate/ramp, and 5.30x12 tires. In very good condition with very good tires.
2003 NEWMAN TREDBED Model 580 Sport Series Single Axle Tow Behind Trailer, equipped with 5'x8'6" aluminum deck, 24" aluminum sides and front, 42" aluminum tailgate/ramp, and 5.30x12 tires. In very good condition with very good tires.
2002 LOADRITE Model PSM12-101 Single Axle Aluminum Trailer, equipped with 12'x8'6" wooden deck and 20.5x8.0-10 tires. In very good condition with very good tires.
FABRIQUE PAR Model Karavan Single Axle Tow Behind Trailer, equipped with 8'4"x10" wooden deck and 18.5x8.50-8 tires. In good condition with good tires.

LAWN TRACTORS, INDUSTRIAL MOWERS, AND LAWN MOWERS
(See Website For Complete Descriptions)
JOHN DEERE Lawn Tractors Including The Following Models: (2) Sabre 2148 Lawn Tractors. Very Good (Unused) • LX277 All-Wheel Steer • GT235 • STX46 • LT160 • STX46 • STX38, rear bagger system • 425 All-Wheel Steer • Sabre 1546 • 214 • (3) 318 • LX188 • Sabre 1338 • 320 • 240 • 185 • 180 • Sabre 1646 • (2) 116 • 108 • 111 • 320 • (2) Sabre • (2) Sabre 1646 • (2) Sabre 1546 • 175 Hydro XL • 111 • GT262 • T065 • 140
CUB CADET Lawn Tractors Including The Following Models: 1730 • 142-653-100 • HDS2135 • 141652100 • HDS2185 • 135-266-100
NOMA Lawn Tractors Including The Following Models: (2) 1846P • LX1240 • 1643P • F4316100
WHEEL-HORSE Lawn Tractors Including The Following Models: 73470, Toro Easy Twin bagger • 312-8 • LT1100 • 416-H
PLUS: ARIENS Y112H, Ariens Bagger-Vac 3-bag bagging system • CRAFTSMAN LT4000 • KUBOTA T1400H • BOLENS ST110, backpacker bagging system • SIMPLICITY Regent 4211 • SNAPPER LT125G38AB

INDUSTRIAL MOWERS
JOHN DEERE Model 2653A, 3-Gang Riding Mower, s/n M02653D050030, powered by John Deere 3 cylinder diesel engine and hydrostatic transmission, equipped with electronic ignition, (3) 26" hydraulic mower attachments, and 20x10.00-10 front and 20x10.00-8 rear tires. In good condition with good tires.
GRASSHOPPER Model 928D Industrial Riding Mower, s/n 452201, powered by Kubota 3 cylinder diesel engine and hydrostatic transmission, equipped with model 9361 mower attachment, s/n 455652, model VAC961 vacuum attachment, s/n 328311, rear dump grass collector, and 21x11.00-8 tires. In good condition with good tires. (00,266 Hours)
ASSORTED MANUFACTURER RIDING MOWERS To Include: WHEEL HORSE 108-4, rear bagger system • JOHN DEERE 68 • JOHN DEERE SX95 • WHEEL HORSE A-51 • HONDA 30/3
WALK BEHIND MOWERS To Include: JOHN DEERE HD75 • JOHN DEERE 32 • JOHN DEERE GS25
LARGE QUANTITY of gas/electric push mowers, bagger attachments, string trimmers, blowers, etc.

SHOP TOOLS
CHAPMAN VR5-8 Vertical Shop Air Compressor • ELECTRO MAGIC Natural Gas Fired Pressure Washer • LINCOLN Idealarc 250 Portable Arc Welder • COATS 9000 Tire Machine • PAPEC Electric Grinder • Chain Fall • (2) ZIMMERMAN 5019, 36" Portable Electric Fans, Dayton 1/2HP electric • HOMELITE PW1750 Pressure Washer, Briggs & Stratton 4HP gas, 1750 PSI. (Unused) • HOMELITE SPW2800 Pressure Washer, Honda 9HP gas (Unused) • KARCHER HD850 Pressure Washer • (4) KARCHER HD575 Pressure Washers • KARCHER HDS600C Pressure Washer • TORO 824XL Gas Powered Walk Behind Snow Blower

COMPONENTS AND PARTS
(42) Unused Tires consisting of: (14) GOODYEAR: (2) 10.00x20, (2) 18.4x38, (4) 12.4x28, (1) 18.4R34, (1) 13.6x26, (2) 13.9x36, (1) 16.9x24, (1) 16.9x30, (4) MICHELIN: (4) 17.5R25 with rims: (11) CON-STELLATION: (2) 18.4x26, (6) 17.5x25, (1) 18.4x34, (2) 24.5x32; (2) GALAXY: (2) 19.5Lx24; (1) MITAS: (1) 16.9x30; (1) KUHMO: (1) 8.25R15; (7) FIRESTONE: (2) 11R24.5, (1) 18.4x28, (1) 11.2x24, (1) 12.4x28 with rim, (2) 16.9x38; (1) ARMSTRONG: (1) 17.5x25; (1) GENERAL: (1) 16.9x14-30

Large Quantity of Assorted Tire Chains • Approx. (80) Assorted Used Tractor, Truck, & Skid Steer Tires • (5) Boom Pedestals (poor) • JOHN DEERE 544 Torque Converter Housing • Large Quantity JOHN DEERE Skidder Transmission Parts • (2) JOHN DEERE 540A Powershift Transmissions • JOHN DEERE 540D Powershift Transmission (Parts) • (2) TIMBERJACK 5-Speed Transmissions • Small Quantity of Assorted TIMBERJACK Parts consisting of: transmission and planetary housings • Large Quantity JOHN DEERE Skidder Axle, Brake, & Rear End Parts • Approx. (30) Used JOHN DEERE Hydraulic Cylinders, for various machines • Large Quantity of Assorted JOHN DEERE Engine Parts • (3) JOHN DEERE 329, 6 Cylinder Engines • (2) JOHN DEERE 219, 4 Cylinder Engines • JOHN DEERE 132, 3 Cylinder Engine • DETROIT 3-53 Engine (Needs Rebuild) • JOHN DEERE 359, 6 Cylinder Diesel Engine (Rebuilt) • JOHN DEERE 192 Gas Engine • (2) JOHN DEERE 450 Transmission Cases • (3) JOHN DEERE 550 Steering Clutch Housings • JOHN DEERE 440C Transmission Case & Bell Housing • (15) JOHN DEERE Axles including: (2) 440B or 540A; (5) 440A; 440D/540A front; 440A or 540A; (2) 540D; 540B; (3) 540A long • TIMBERJACK Axle • (2) C7 TREE FARMER Axles • (11) Various JOHN DEERE Skidder Axle Housings • JOHN DEERE 540D Planetary • JOHN DEERE 4-Wheel Drive Axle Assembly (Fits 4000 Series John Deere Compact Diesels) • 11' Mechanics Body. (Poor) • CATERPILLAR D4 Tractor Frame • Approx. (40) Assorted JOHN DEERE, TIMBERJACK, TREE FARMER and FRANKLIN Rims • (3) JOHN DEERE Model 450E Track Groups (Unused) • JOHN DEERE Model 450 Track Group

RECREATIONAL VEHICLE TRAILERS
(2) 2004 NEWMAN 12' Sled-Bed Single Axle Tag-A-Long Trailers. In very good condition with very good tires.
(4) 2004 NEWMAN 10' Sled-Bed Single Axle Tag-A-Long Trailers. In very good condition with very good tires.
2003 NEWMAN Model 1ATV78A-11, 8'x7' Sport Series Single Axle Aluminum Trailer. In very good condition with very good tires.
2001 LOADRITE Model PSM16T-TRS2, 8'-6"x16" Tandem Axle Aluminum Tilt Deck Trailer. In good condition with good tires.
1995 CROSS COUNTRY Model 818TES, 8'x18" Tandem Axle Tow Behind Trailer. In good condition with good tires.
2003 NEWMAN TREDBED Model 580 Sport Series Single Axle Tow Behind Trailer, equipped with 5'x8'6" aluminum deck, 24" aluminum sides and front, 42" aluminum tailgate/ramp, and 5.30x12 tires. In very good condition with very good tires.
2003 NEWMAN TREDBED Model 580 Sport Series Single Axle Tow Behind Trailer, equipped with 5'x8'6" aluminum deck, 24" aluminum sides and front, 42" aluminum tailgate/ramp, and 5.30x12 tires. In very good condition with very good tires.
2002 LOADRITE Model PSM12-101 Single Axle Aluminum Trailer, equipped with 12'x8'6" wooden deck and 20.5x8.0-10 tires. In very good condition with very good tires.
FABRIQUE PAR Model Karavan Single Axle Tow Behind Trailer, equipped with 8'4"x10" wooden deck and 18.5x8.50-8 tires. In good condition with good tires.

LAWN TRACTORS, INDUSTRIAL MOWERS, AND LAWN MOWERS
(See Website For Complete Descriptions)
JOHN DEERE Lawn Tractors Including The Following Models: (2) Sabre 2148 Lawn Tractors. Very Good (Unused) • LX277 All-Wheel Steer • GT235 • STX46 • LT160 • STX46 • STX38, rear bagger system • 425 All-Wheel Steer • Sabre 1546 • 214 • (3) 318 • LX188 • Sabre 1338 • 320 • 240 • 185 • 180 • Sabre 1646 • (2) 116 • 108 • 111 • 320 • (2) Sabre • (2) Sabre 1646 • (2) Sabre 1546 • 175 Hydro XL • 111 • GT262 • T065 • 140
CUB CADET Lawn Tractors Including The Following Models: 1730 • 142-653-100 • HDS2135 • 141652100 • HDS2185 • 135-266-100
NOMA Lawn Tractors Including The Following Models: (2) 1846P • LX1240 • 1643P • F4316100
WHEEL-HORSE Lawn Tractors Including The Following Models: 73470, Toro Easy Twin bagger • 312-8 • LT1100 • 416-H
PLUS: ARIENS Y112H, Ariens Bagger-Vac 3-bag bagging system • CRAFTSMAN LT4000 • KUBOTA T1400H • BOLENS ST110, backpacker bagging system • SIMPLICITY Regent 4211 • SNAPPER LT125G38AB

INDUSTRIAL MOWERS
JOHN DEERE Model 2653A, 3-Gang Riding Mower, s/n M02653D050030, powered by John Deere 3 cylinder diesel engine and hydrostatic transmission, equipped with electronic ignition, (3) 26" hydraulic mower attachments, and 20x10.00-10 front and 20x10.00-8 rear tires. In good condition with good tires.
GRASSHOPPER Model 928D Industrial Riding Mower, s/n 452201, powered by Kubota 3 cylinder diesel engine and hydrostatic transmission, equipped with model 9361 mower attachment, s/n 455652, model VAC961 vacuum attachment, s/n 328311, rear dump grass collector, and 21x11.00-8 tires. In good condition with good tires. (00,266 Hours)
ASSORTED MANUFACTURER RIDING MOWERS To Include: WHEEL HORSE 108-4, rear bagger system • JOHN DEERE 68 • JOHN DEERE SX95 • WHEEL HORSE A-51 • HONDA 30/3
WALK BEHIND MOWERS To Include: JOHN DEERE HD75 • JOHN DEERE 32 • JOHN DEERE GS25
LARGE QUANTITY of gas/electric push mowers, bagger attachments, string trimmers, blowers, etc.

SHOP TOOLS
CHAPMAN VR5-8 Vertical Shop Air Compressor • ELECTRO MAGIC Natural Gas Fired Pressure Washer • LINCOLN Idealarc 250 Portable Arc Welder • COATS 9000 Tire Machine • PAPEC Electric Grinder • Chain Fall • (2) ZIMMERMAN 5019, 36" Portable Electric Fans, Dayton 1/2HP electric • HOMELITE PW1750 Pressure Washer, Briggs & Stratton 4HP gas, 1750 PSI. (Unused) • HOMELITE SPW2800 Pressure Washer, Honda 9HP gas (Unused) • KARCHER HD850 Pressure Washer • (4) KARCHER HD575 Pressure Washers • KARCHER HDS600C Pressure Washer • TORO 824XL Gas Powered Walk Behind Snow Blower

COMPONENTS AND PARTS
(42) Unused Tires consisting of: (14) GOODYEAR: (2) 10.00x20, (2) 18.4x38, (4) 12.4x28, (1) 18.4R34, (1) 13.6x26, (2) 13.9x36, (1) 16.9x24, (1) 16.9x30, (4) MICHELIN: (4) 17.5R25 with rims: (11) CON-STELLATION: (2) 18.4x26, (6) 17.5x25, (1) 18.4x34, (2) 24.5x32; (2) GALAXY: (2) 19.5Lx24; (1) MITAS: (1) 16.9x30; (1) KUHMO: (1) 8.25R15; (7) FIRESTONE: (2) 11R24.5, (1) 18.4x28, (1) 11.2x24, (1) 12.4x28 with rim, (2) 16.9x38; (1) ARMSTRONG: (1) 17.5x25; (1) GENERAL: (1) 16.9x14-30

Large Quantity of Assorted Tire Chains • Approx. (80) Assorted Used Tractor, Truck, & Skid Steer Tires • (5) Boom Pedestals (poor) • JOHN DEERE 544 Torque Converter Housing • Large Quantity JOHN DEERE Skidder Transmission Parts • (2) JOHN DEERE 540A Powershift Transmissions • JOHN DEERE 540D Powershift Transmission (Parts) • (