



(2) OF (2)
'93 MACK RD690S



(1) OF (3) '00
MACK RD688S

(13) TRI-AXLE DUMP TRUCKS

2000 MACK Model RD688S Tri-Axle Dump Truck, powered by Mack E7-350 diesel engine and Fuller 8LL, 10 speed transmission, equipped with 18,000# front axle, 44,000# rears, 20,000# airlift 3rd axle, Bibeau 17' heated steel dump body with coal chute and electric tarp, 2-position Jake brake, dual aluminum fuel tanks, air conditioning, 315/80R22.5 front and 3rd axle and 11R24.5 rear tires. In good condition with fair to good tires.

2000 MACK Model RD688S Tri-Axle Dump Truck, powered by Mack E7-350 diesel engine and Fuller 8LL, 10 speed transmission, equipped with 18,000# front axle, 44,000# rears, 20,000# airlift 3rd axle, Bibeau 17' heated steel dump body with coal chute and electric tarp, 2-position Jake brake, dual aluminum fuel tanks, air conditioning, 315/80R22.5 front and 3rd axle and 11R24.5 rear tires. In good condition with good tires.

2000 MACK Model RD688S Tri-Axle Dump Truck, powered by Mack E7-350 diesel engine and Fuller 8LL, 10 speed transmission, equipped with 18,000# front axle, 44,000# rears, 20,000# airlift 3rd axle, Bibeau 17' heated steel dump body with coal chute and electric tarp, 2-position Jake brake, dual aluminum fuel tanks, air conditioning, 315/80R22.5 front and 3rd axle and 11R24.5 rear tires. In good condition with good tires.

1993 MACK Model RD690S Tri-Axle Dump Truck, powered by Mack EM7-300 diesel engine and Maxitorque T2070, 7 speed transmission, equipped with 18,000# front axle, 44,000# rears, 20,000# airlift 3rd axle, J&J 16' aluminum dump body with manual tarp, 2-position Jake brake, air conditioning, 315/80R22.5 front and 11R24.5 rear tires. In good condition with good tires.

1993 MACK Model RD690S Tri-Axle Dump Truck, powered by Mack EM7-300 diesel engine and Maxitorque T2070, 7 speed transmission, equipped with 18,000# front axle, 44,000# rears, 20,000# airlift 3rd axle, J&J 16' aluminum dump body with manual tarp, 2-position Jake brake, air conditioning, 315/80R22.5 front and 11R24.5 rear tires. In good condition with good tires.

1993 MACK Model RD690S Tri-Axle Dump Truck, powered by Mack EM7-300 diesel engine and Maxitorque T2070, 7 speed transmission, equipped with 18,000# front axle, 44,000# rears, 20,000# airlift 3rd axle, J&J 16' aluminum dump body with manual tarp, 2-position Jake brake, air conditioning, 315/80R22.5 front and 11R24.5 rear tires. In good condition with good tires.

(1) OF (4)
'87 MACK
RD686S



(1) OF (3)
'85 MACK
RD686S

1987 MACK Model RD686S Tri-Axle Dump Truck, powered by Mack EM6-300 diesel engine and 6 speed lo-hole transmission, equipped with 44,000# rears, airlift 3rd axle, 16' steel dump body with manual tarp, engine brake, 315/80R22.5 front and 11R24.5 rear tires. In good condition with good tires.

1987 MACK Model RD686S Tri-Axle Dump Truck, powered by Mack EM6-300 diesel engine and 6 speed lo-hole transmission, equipped with 44,000# rears, airlift 3rd axle, 16' steel dump body with manual tarp, engine brake, 315/80R22.5 front and 11R24.5 rear tires. In fair condition with fair to good tires.

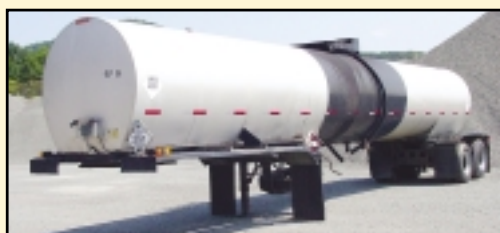
1987 MACK Model RD686S Tri-Axle Dump Truck, powered by Mack EM6-300 diesel engine and 6 speed lo-hole transmission, equipped with 44,000# rears, airlift 3rd axle, 16' steel dump body with manual tarp, engine brake, 315/80R22.5 front and 11R24.5 rear tires. In good condition with good tires.

1987 MACK Model RD686S Tri-Axle Dump Truck, powered by Mack EM6-300 diesel engine and 6 speed lo-hole transmission, equipped with 44,000# rears, airlift 3rd axle, 16' steel dump body with manual tarp, engine brake, 315/80R22.5 front and 11R24.5 rear tires. In fair condition with fair tires.

1985 MACK Model RD686S Tri-Axle Dump Truck, powered by Mack EM6-285 diesel engine and 6 speed lo-hole transmission, equipped with 16,000# front axle, 44,000# rears, airlift 3rd axle, 16' steel dump body with manual tarp, 2-position Jake brake, 315/80R22.5 front and 11R24.5 rear and 3rd axle tires. In good condition with fair to good tires.

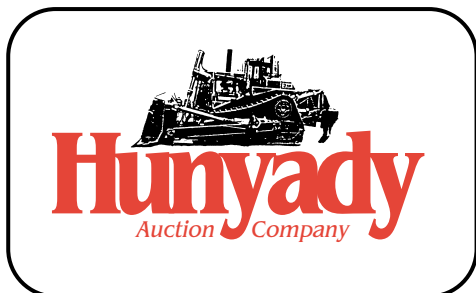
1985 MACK Model RD686S Tri-Axle Dump Truck, powered by Mack EM6, 285HP diesel engine and 6 speed lo-hole transmission, equipped with 16,000# front axle, 44,000# rears, 16' steel dump body with electric tarp, 2-position Jake brake, airlift 3rd axle, 315/80R22.5 front and 11R24.5 rear and 3rd axle tires. In good condition with fair to good tires.

1985 MACK Model RD686S Tri-Axle Dump Truck, powered by Mack EM6-285 diesel engine and 6 speed lo-hole transmission, equipped with 16,000# front axle, 44,000# rears, airlift 3rd axle, 16' steel dump body with manual tarp, 2-position Jake brake, 315/80R22.5 front and 11R24.5 rear and 3rd axle tires. In good condition with good tires.



'87 FRUEHAUF
7,000 GALLON
ASPHALT

FRUEHAUF 24'
STEEL DUMP



1440 Cowpath Rd. • Hatfield, PA 19440 • 215/361-9099 • Fax: 215/361-9212

NOTICE: The remaining construction equipment and rolling stock of Wyoming Sand and Stone Company will be completely liquidated by order secured creditor, M&T Bank. All equipment in the auction is owned by M&T Bank and will sell to the highest bidder regardless of price!

LOCATION: The auction will be held at Wyoming Sand and Stone's shop facility on SR2013, Falls, Pennsylvania, 18615

TERMS: Payment in full is required on sale day by cash, certified funds, or check with a bank letter of guarantee. Sample letter of guarantee: "We hereby guarantee the payment of our customer _____ written on his account up to _____ dollars for purchases at your auction sale on October 30, 2003." All guaranteed checks should be made payable to Hunyady Auction Co.

INSPECTION: Items will be available for inspection beginning one week prior to the sale with the exception of Saturday the 25th and Sunday the 26th, from 8:00 a.m. until 5:00 p.m., or sale day morning from 7:00 a.m. until 9:00 a.m.

REMOVAL: After complete payment, all sale items may be removed on sale day as long as the removal activity is not disruptive to the sale and only until 5:00 p.m. Items may also be removed Friday, October 31, from 8:00 a.m. until 5:00 p.m. and Monday, November 3 thru Thursday, November 6, from 8:00 a.m. until 5:00 p.m. All items must be removed no later than Thursday, November 6, 2003 at 5:00 p.m.

SALE SITE DIRECTIONS: FROM PA TURNPIKE (I-476) and INTERSTATE 81 (at Clarks Summit): Follow signs to Route 11 North, proceed on Route 11 North (1.5) miles and turn left onto Winola Road ("To Route 307"). Follow (1.4) miles, road becomes Route 307 North, proceed (2.3) miles and turn left onto Falls Road. Continue on Falls Road for (5.2) miles and turn left immediately before bridge. *This road in unmarked, look for auction signs.* Continue (2.5) miles to sale site on right.

LOCAL DIRECTIONS FROM ROUTE 6 IN TUNKHANNOCK, PA: Proceed to Route 92 South, follow Route 92 South approximately (9.0) miles to Falls, Pennsylvania. Continue straight at point where Route 92 crosses the Susquehanna River. DO NOT cross bridge. Follow to "Y" and bare right over bridge and make immediate right. Follow (2.5) miles to sale site on right.

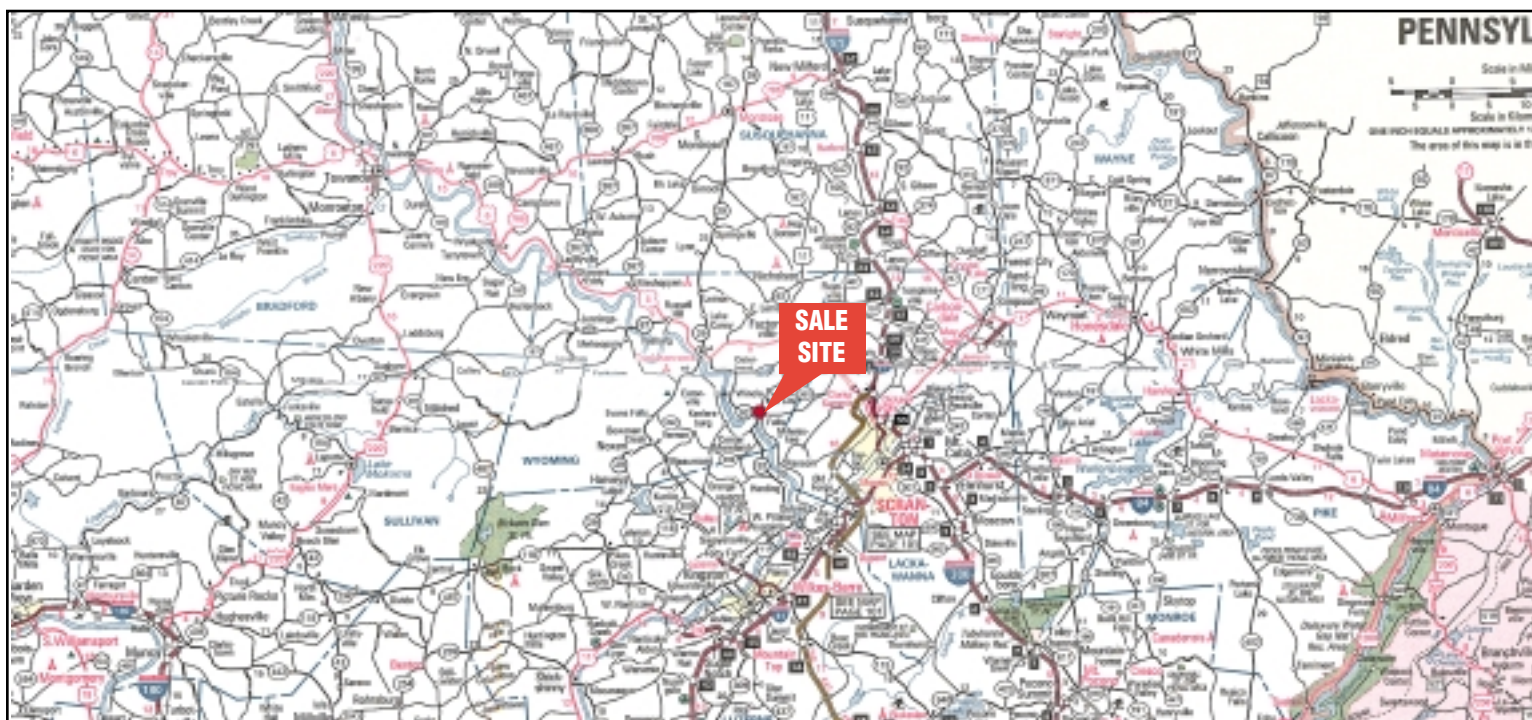
AIRPORT INFORMATION: This area is serviced commercially through Wilkes-Barre/Scranton International Airport and privately through Skyhaven Airport (76N) (Tunkhannock) (570) 836-4800

MOTEL INFORMATION: Shadowbrook Inn and Resort (Tunkhannock) (570) 955-0295 • Hampton Inn (Clarks Summit) (570) 586-1515 • Days Inn (Clarks Summit) (570) 586-9100 • Ramada (Clarks Summit) (570) 586-2730

SALE SITE PHONE NUMBER: (570) 585-0393

SALE SITE FAX NUMBER: (570) 585-7382

PA AUCTION LICENSE NO: AY000281



ABSOLUTE AUCTION

COMPLETE LIQUIDATION

CONSTRUCTION EQUIPMENT AND ROLLING STOCK

THURSDAY, OCTOBER 30, 2003 - 9:00 A.M.

**Falls, Pennsylvania
(Wilkes-Barre/Scranton Area)**

**WYOMING SAND
and STONE COMPANY**

(5) OF (13) MACK TRI-AXLE DUMPS



'92 CAT IT28B



'85 CAT 140G



LINK BELT 18 TON



1440 COWPATH RD. • HATFIELD, PA 19440
215/361-9099 • Fax: 215/361-9212

PRE-SORTED
FIRST CLASS MAIL
US POSTAGE
PAID
HAVERTOWN, PA
PERMIT #45





'92 CAT IT28B

(1) OF (2)
DRESSER
560B'S



TOOL CARRIER AND RUBBER TIRED LOADERS

1992 CATERPILLAR Model IT28B Integrated Tool Carrier, s/n 1HF02419, powered by Cat 4 cylinder diesel engine and powershift transmission, equipped with general purpose loader bucket, quick disconnect, auxiliary hydraulics, enclosed ROPS cab with heat and air conditioning, light package, and 17.5R25 tires. In good condition with fair tires.

1988 JOHN DEERE Model 624E Rubber Tired Loader, s/n DW624ED520406, powered by John Deere diesel engine and power-shift transmission, equipped with general purpose loader bucket, rear counterweight, EROPS, light package, and 20.5x25 tires. In good condition with fair tires.

1989 DRESSER Model 560B Rubber Tired Loader, s/n 3640201U004574, powered by 6 cylinder diesel engine and power-shift transmission, equipped with general purpose loader bucket with teeth, rear bumper counterweight, EROPS, air conditioning, light package, and 29.5R29 tires. In good condition with good tires.

1987 DRESSER Model 560B Rubber Tired Loader, s/n 3640201U004390, powered by 6 cylinder diesel engine and power-shift transmission, equipped with general purpose loader bucket with teeth, rear bumper counterweight, EROPS, air conditioning, light package, and 29.5R29 tires. In good condition with fair tires.

CRAWLER TRACTOR AND MOTOR GRADER

1988 DRESSER Model TD25G Crawler Tractor, s/n 4370007U002441, powered by Cummins 6 cylinder diesel engine and powershift transmission, equipped with semi-U blade with tilt, Ateco Model PBF-TD25C 2-barrel 3-shank ripper, s/n 17705W with (1) shank, enclosed ROPS cab with heat and air conditioning, and 24" SBG pads. In good condition with good to very good undercarriage.

1985 CATERPILLAR Model 140G Articulated Motor Grader, s/n 72V08144, powered by Cat 3306 diesel engine and 6 speed power-shift transmission, equipped with 14' hydraulic moldboard, enclosed ROPS cab with heat, light package, and 14.00x24 tires. In good condition with fair tires.

INNOCEPT Blade Guards, s/n 785120



'88 DRESSER TD25G
WITH RIPPER



'85 CAT 140G



'86
CAT 229

HYDRAULIC EXCAVATOR, DEMOLITION HAMMERS AND ATTACHMENTS

1986 CATERPILLAR Model 229 Custom 180 Hydraulic Excavator, s/n 1GF00309, powered by Cat 3208 diesel engine and hydraulic drive, equipped with 7'9" dipper stick, 36" digging bucket, thumb attachment, 14'10" crawlers, and 28" TBG pads. In good condition with good undercarriage.

KENT Model KHB30G Hydraulic Demolition Hammer, s/n 4521 • **ALLIED Model 730 Hiram Hydraulic Demolition Hammer**, s/n 2135. In good condition • **ALLIED Model 750BE Hydraulic Demolition Hammer**, s/n 2129. In good condition. **Gradall Buckets:** 36"; 15"; 14" Digging • (2) 58" & (1) 24" Clean-Up • Trench Bucket



LINK BELT
18 TON

ROUGH TERRAIN CRANE

LINKBELT Model HSP-8018, 18 Ton Hydraulic Rough Terrain Crane, s/n 47H1-1361, powered by Detroit 4-71 diesel engine and shuttle transmission, equipped with 28.75'-70.25' 3-section hydraulic boom with 24' manual 4th section and 24.5' swing away jib, main and auxiliary hoists, anti-two block alarm, and Johnson 3-sheave hook block. In good condition with good tires.



'93 IR DD-110

1990 INGERSOLL RAND Model DD-90 Double Drum Vibratory Roller, s/n 5709S, powered by Cummins 4 cylinder diesel engine and hydraulic drive, equipped with 66" smooth drums, drum cleaners, and dual water system. In good condition.

1986 CATERPILLAR Model PS-130 9-Wheel Roller, s/n 7ND00131, powered by Perkins 4 cylinder diesel engine and shuttle transmission, equipped with light package and 7.50x15 tires. In good condition with good tires.

COMPACTION EQUIPMENT

1993 INGERSOLL RAND Model DD-110 Double Drum Vibratory Roller, s/n 5164SJC, powered by Cummins 4 cylinder diesel engine and hydrostatic transmission, equipped with 78" smooth drums and water system. In good condition.



'90 IR DD-90



'86 CAT PS-130

INGERSOLL RAND Model SPGEA-20 Walk Behind Roller, s/n 5768-S, powered by Kohler 1 cylinder gas engine and hydrostatic transmission, equipped with 30" smooth front drum, 12" smooth steering drum, and water system. In fair condition. (Missing Parts)



'89 JD 510C

TRACTOR LOADER BACKHOE AND ATTACHMENTS

1989 JOHN DEERE Model 510C Tractor Loader Backhoe, s/n T0510CB755819, powered by John Deere diesel engine and shuttle transmission, equipped with general purpose loader bucket, 24" digging bucket, EROPS, light package, 11Lx16 front and 21Lx24 rear tires. In good condition with fair to poor tires.

Digging Buckets: 24" & 12" (JD 510) • 12" (Cat 416)

FORKLIFTS

TOWMOTOR Model V50B Pneumatic Tired Forklift, s/n 81M850, powered by 4 cylinder propane gas engine and shuttle transmission, equipped with 5,000# capacity, 144" 2-stage mast, 46" forks, operator protection, 7.00x12 front and 6.50x10 rear tires. In good condition with good tires.

DATSUN Model FG105, 5,000# Cushion Tired Forklift, s/n FG105-05462, powered by 4 cylinder gas engine and shuttle transmission, equipped with 5,000# capacity, 130" 2-stage mast, sideshift, 42" forks, operator protection, 7.00x12 front and 6.00x9 rear tires.

YALE Model G83C-040-SBS-071 Solid Tired Forklift, s/n P-250158, powered by 6 cylinder gas engine and shuttle transmission, equipped with 4,000# capacity, 130" 2-stage mast, 40" forks, operator protection, 21x6x15 front and 16.25x5x11 rear tires. In good condition with good tires.

BIG JOE Model PDH-20-106, 2,000# Electric Walk Behind Forklift, s/n 68330, equipped with 106" lift height, 35" forks, and charger



ROSCO
CHIP
SPREADER

CHIP SPREADER, ASPHALT TANK TRAILER, AND TARPOTS

ROSCO Model SPRH-H Chip Spreader, s/n 30036, powered by Cummins B-Series 6 cylinder diesel engine and hydrostatic transmission, equipped with dual drive tires, 12' discharge with (15) manual flow gates, (2) 20" feed conveyors, swing operator controls, light package, and 10.00x20 tires. In good condition with good tires.

1987 FRUEHAUF Model THE-F2-R-7000 Tandem Axle Asphalt Trailer, equipped with 7,000 gallon HSLA Shell hot asphalt tank and 295/75R22.5 tires. In good condition with good tires.

AEROIL Model KEB-165, 165 Gallon Portable Tar Pot, s/n 1408, equipped with propane heater and 7.00x15 tires. In good condition with good tires.

AEROIL 165 Gallon Portable Tar Pot, equipped with 7.00-15 tires. In good condition with fair tires.

AEROIL 115 Gallon Portable Tar Pot, equipped with 205/75R15 tires. In good condition with good tires.

AEROIL Model HE-PS-15, 10' Asphalt Joint Heater with (2) 30# propane cylinders.



IR-750CFM

AIR COMPRESSORS AND WELDERS

INGERSOLL RAND Model P-750-W-CU, 750CFM Portable Air Compressor, s/n 135654U83482, powered by Cummins 6 cylinder diesel engine, equipped with 8.75x16.5 tires. In good condition with fair to good tires.

INGERSOLL RAND Model T-30 2-Stage Air Compressor, powered by Dayton 5HP electric motor, mounted in 20' overseas storage trailer. In good condition.

SPEEDAIRE Model 3Z745A2 Vertical Air Compressor, powered by 5HP electric motor. In good condition.

GARDNER DENVER Model ADS1012 Electric Shop Compressor, s/n 582-163.

GARDNER DENVER Horizontal 2-Stage Electric Shop Compressor, s/n M2159, powered by 10HP, 3-phase electric motor

INGERSOLL RAND Model 253, 2-Stage Horizontal Shop Air Compressor, s/n 30T645970

LINCOLN Model SA200 Portable Welder, s/n A-1050748, powered by 4 cylinder gas engine, equipped with B78x13 tires. In good condition with good tires.

MILLER Model Big Blue 400D, 400 Amp Skid Mounted Welder, s/n KF798731, powered by Deutz 3 cylinder diesel engine. In good condition.

MILLER Model Big Blue 400D, 400 Amp Skid Mounted Welder, powered by Deutz 3 cylinder diesel engine. In good condition.

LINCOLN Model Weldanpower 225G7, 225 Amp Skid Mounted Welder, s/n A1139794, powered by 2 cylinder gas engine. In good condition.

LINCOLN Model Weldanpower 200 Amp Skid Mounted Welder, s/n A1115850, powered by Briggs & Stratton 16HP gas engine. In good condition.

LINCOLN Model Weldanpower 200 Amp Skid Mounted Welder, s/n A1064791, powered by Briggs & Stratton 16HP gas engine. In fair condition.

LINCOLN Model Idealarc DC400, 400 Amp Electric Welder, s/n AC665783, equipped with multi-process switch, Lincoln Model LN-7 wire feed unit, and L-TEC Model M16-28A wire feed unit. In good condition.

LINCOLN Model Idealarc DC400, 400 Amp Electric Welder, s/n AC-U1921200441, equipped with multi-process switch. In good condition.

AIRCO 400 Amp Bumble Bee Welder, s/n HR101103. In good condition.

MILLER Model S-44GL Semi-Automatic Wire Feed Unit, s/n KF767006 • **MILLER Model S-32S Wire Feed Unit** • **HOBART Welding Wire Feed** • Large Quantity of Welding Rod & Wire



50' OFFICE TRAILER

STEEL DUMP, OFFICE AND VAN TRAILERS

1974 FRUEHAUF 24' Tandem Axle Steel Dump Trailer, equipped with Shopmade dovetail and 315/80R22.5 tires. In good condition with good tires.

12'x50' Tandem Axle Office Trailer, equipped with (3) rooms, air conditioning, and 7x14.5 tires. In good condition with good tires.

1989 ACTION MOBILE INDUSTRIES 10'x35' Tandem Axle Office Trailer, equipped with (2) offices, electric heat, and window air conditioning. In fair condition with fair tires.

GINDY Model SL2E400A61D6, 40' Tandem Axle Office/Storage Van Trailer, equipped with electric heat, window air conditioner, man door, swing rear doors, and 11x22.5 tires. In good condition with poor tires.

GINDY Model SL2E400A61D6, 40' Tandem Axle Office/Storage Van Trailer, equipped with electric heat, window air conditioner, man door, swing rear doors, and 11x22.5 tires. In good condition with poor tires.

40' Tandem Axle Office/Storage Van Trailer, equipped with windows, swing rear door, side door, sliding tandems, and 10.00x20 tires. In fair condition with fair to poor tires.

FRUEHAUF Model FZJ2-1-28/10, 28' Single Axle Storage Van Trailer, equipped with roll-up rear door and 11x22.5 tires. In fair to good condition with good tires.

FRUEHAUF Model FZJ2-1-28/10, 28' Single Axle Storage Van Trailer, equipped with roll-up rear door and 11x22.5 tires. In fair to good condition with good tires.

TIRE TRUCK AND CORE DRILL TRUCK

FORD Model 900 Cabover Single Axle Knuckleboom Truck, powered by 8 cylinder gas engine and 5 speed transmission, equipped with Remke tire body, Blaw Knox 3-section hydraulic knuckleboom, s/n 0230-115, (2) hydraulic stabilizers, and 11.00x20 tires. In fair condition with fair to good tires.

1987 CHEVROLET Model C20 Core Drill Truck, powered by 6.2 liter diesel engine and automatic transmission, equipped with Milwaukee electric core drill, Dayton Model 4W110, 4,000 watt gas powered generator, approx. 100 gallon water tank, cross tool box, side tool box, and 235/85R16 tires. In good condition with fair to good tires.



CHEVY C20 WITH CORE DRILL

FLATBED AND PICKUP TRUCKS

1986 CHEVROLET Model C70 Single Axle Flatbed Truck, powered by 8.2 liter diesel engine and 5 speed transmission with 2 speed rear, equipped with 14'6" wood flatbed with stake pockets, rear spray bar, and 275/80R22.5 tires. Tires in good condition. (Not Running - Bad Engine)

DODGE Model Custom D300 Flatbed Truck, powered by 8 cylinder gas engine and 4 speed transmission, equipped with 9'6" flatbed and 7.50x16 tires. In poor condition with poor tires.

1985 CHEVROLET Model C20 Pickup Truck, powered by 8 cylinder diesel engine and automatic transmission, equipped with 8' bed, cross tool box, and 235/85R16 tires. In fair to poor condition with fair to poor tires. (Engine and Transmission Good)

1979 FORD Model F250 Custom Pickup Truck, powered by 8 cylinder gas engine and automatic transmission, equipped with 8' bed and 8.75R16 tires. In fair to poor condition with fair tires.



10,000
GALLON
FUEL
STORAGE