

Please visit our website at [www.hunyady.com](http://www.hunyady.com)

# ABSOLUTE AUCTION

1440 Cowpath Rd. • Hatfield, PA 19440 • 215/361-9099 • Fax: 215/361-9212

**NOTICE:** After (35) successful years in the utility construction business, Mr. Clement Ferri has decided to cease operations and completely liquidate the equipment assets owned and operated by Ferri Contracting Co., Inc. Also included is late model equipment from Glenn Johnston, Inc. which is surplus to their present needs, as well as additional items from Kukurin Contracting Co. All items must sell to the highest bidder regardless of price! Auctioneers Note: The majority of the Glenn Johnston and Ferri Contracting equipment was purchased new, well maintained, and remains in good condition.

**LOCATION:** The auction will be conducted at the Pace Pipeline property, located on Business Route 66 in Delmont, Pennsylvania.

**TERMS:** Payment in full is required on sale day by cash, certified funds, or check with a bank letter of guarantee. Sample letter of guarantee: "We hereby guarantee the payment of our customer \_\_\_\_\_ written on his account up to \_\_\_\_\_ dollars for purchases at your auction sale on April 10, 2003." All guaranteed checks should be made payable to Hunyady Auction Co.

**INSPECTION:** Items will be available for inspection the week prior from 8:00 a.m. until 5:00 p.m. or sale day morning from 7:00 a.m. until 9:00 a.m. (With the exception of Sunday, April 6, at which time the site will be closed)

**REMOVAL:** After complete payment, all sale items may be removed on sale day as long as the removal activity is not disruptive to the sale and only until 5:00 p.m. Items may also be removed Friday April 11, 2002 and Monday April 14 thru Thursday April 17, from 8:00 a.m. until 5:00 p.m. All items must be removed no later than Thursday April 17, 2003 at 5:00 p.m.

**SALE SITE DIRECTIONS:** FROM THE INTERSECTION OF US ROUTE 22 AND STATE ROUTE 66: Follow Route 66 South (0.8) miles to Exit #7 (Old Exit 12) (Boquet/Forbes Road/Business Route 66). Proceed to the end of ramp and turn left onto Business Route 66 South. Continue on Business Route 66 South (0.9) miles to sale site on left.

**FROM PENNSYLVANIA TURNPIKE:** Exit #6 (Monroeville) and follow Route 22 East to Route 66 South and follow directions above.

**AIRPORT INFORMATION:** This area is serviced both privately and commercially through Arnold Palmer Regional Airport in Latrobe, Pennsylvania (724) 539-8100 (LBE). Rental cars are available.

**MOTEL INFORMATION:** Super 8 (Rt. 66 Delmont) (724) 468-4888 • Super 8 (Monroeville) (724) 733-8008 • Days Inn (New Stanton-20 minutes from sale site) (724) 925-3591 (There are many additional motels in the New Stanton and Monroeville areas)

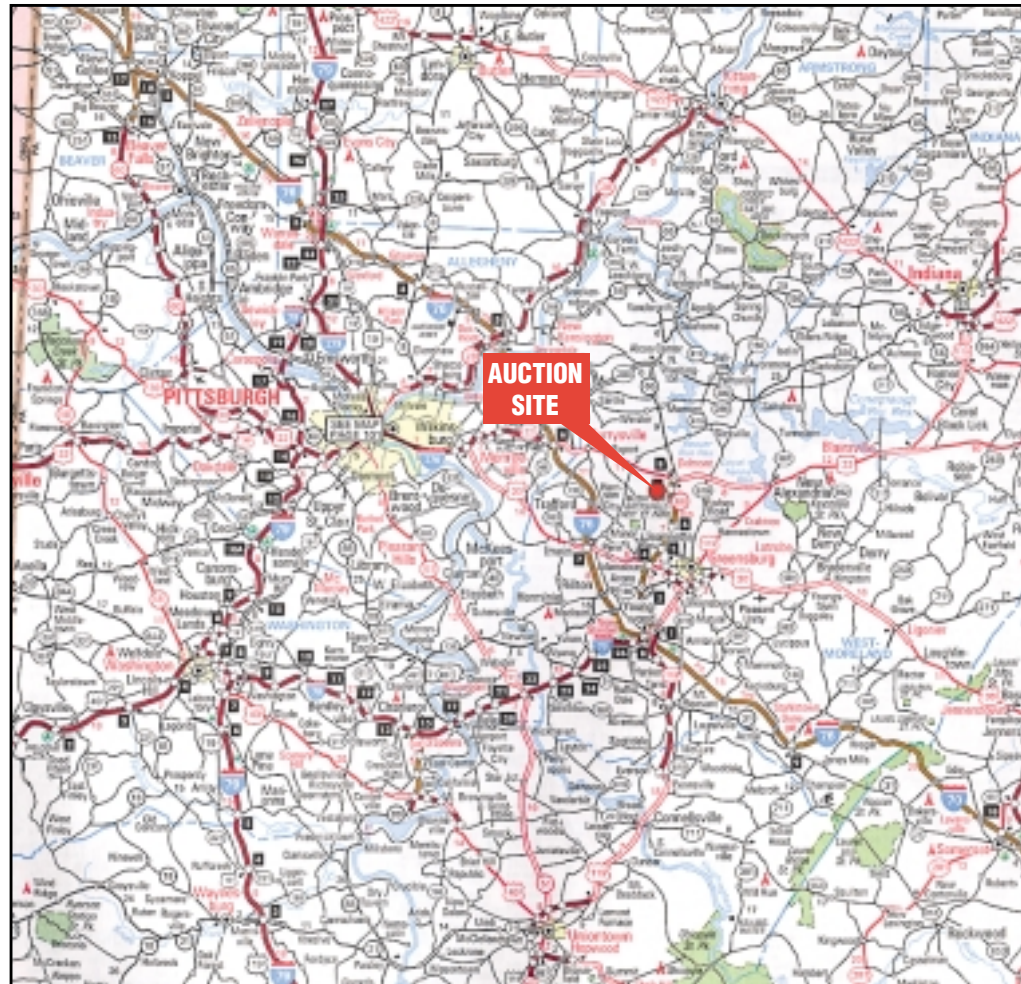
**SALE SITE PHONE NUMBER:**

**(724) 837-2581**

**SALE SITE FAX NUMBER:**

**(724) 837-2584**

**PA AUCTION LICENSE NO:** AY000281



# ABSOLUTE AUCTION

**THURSDAY, APRIL 10, 2003 - 9:00 AM**  
**Delmont, Pennsylvania (Pittsburgh Area)**

*Ferri Contracting Co., Inc.  
(Complete Liquidation)  
Glenn Johnston, Inc.  
Kukurin Contracting Co.*

'99 CAT 345BL & '97 VOLVO A30C



1440 COWPATH RD. • HATFIELD, PA 19440  
215/361-9099 • Fax: 215/361-9212



'00 AND '99 PETERBILT 357's

PRE-SORTED  
FIRST CLASS MAIL  
U.S. POSTAGE  
**PAID**  
HAVERTOWN, PA  
PERMIT #45



(2) '99 BOBCAT 864's



'89 GROVE RT630, 30 TON

**CRAWLER TRACTORS**  
**1995 KOMATSU Model D37P-5 Crawler Tractor**, s/n 3437, powered by Komatsu diesel engine and powershift transmission, equipped with 6-way blade, low hitch, ROPS canopy, and 24" SBG pads. In good condition with good undercarriage. (Purchased New) (Ferris)

**1988 KOMATSU Model D20P-6 Crawler Tractor**, s/n 63701, powered by Komatsu diesel engine and powershift transmission, equipped with 6-way blade, sun canopy, light package, and 20" high flotation pyramid pads. In fair to good condition with fair to good undercarriage. (Kukurin)

**CATERPILLAR Model D8H Crawler Tractor**, s/n 46A25475, powered by Cat diesel engine and powershift transmission, equipped with C-frame straight blade with manual angle, ROPS canopy with forestry package, drawbar, and 28" SBG pads. In good condition with good undercarriage. (Kukurin)

**CRAWLER LOADERS**

**1989 CATERPILLAR Model 935C Crawler Loader**, s/n 8CF00300, powered by Cat diesel engine and powershift transmission, equipped with 4-in-1 loader bucket with teeth, ROPS canopy, tow hitch, and 14" TBG pads. In good condition with fair to good undercarriage. (Kukurin)

**CATERPILLAR Model 963 Crawler Loader**, s/n 11Z00237, powered by Cat 3406 diesel engine and hydrostatic transmission, equipped with general purpose loader bucket, enclosed ROPS cab with heat, and 22" DBG pads. In fair to good condition with poor undercarriage. (Kukurin)

**1985 LIEBHERR Model LR6218 Crawler Loader**, s/n 163-0455, powered by Liebherr diesel engine and hydrostatic transmission, equipped with general purpose loader bucket with teeth, enclosed ROPS cab with heat, light package, and 20" DBG pads. In fair condition with fair to poor undercarriage. (Kukurin)

**TOOL CARRIER, RUBBER TIRED LOADERS, AND ATTACHMENTS**

**1997 JOHN DEERE Model TC54H Rubber Tired Tool Carrier**, s/n DWTC54H563886, powered by John Deere diesel engine and powershift transmission, equipped with general purpose loader bucket, hydraulic quick disconnect, auxiliary hydraulics, enclosed ROPS cab, air conditioning, light package, ride control, and 20.5R25 tires. In good condition with fair to poor tires. (Purchased New) (Johnston)

**1995 FIAT ALLIS Model FR130-2 Rubber Tired Loader**, s/n 542132, powered by Iveco diesel engine and powershift transmission, equipped with general purpose loader bucket, 60" fork attachment, hydraulic quick disconnect, auxiliary hydraulics, rear bumper counterweight, enclosed ROPS cab with heat, light package, and 20.5R25 tires. In fair to good condition with fair to good tires. (Fork Attachment To Be Sold Separately) (Purchased New) (Ferris)

**1988 KOMATSU Model WA180-1L Rubber Tired Loader**, s/n 10305, powered by Komatsu diesel engine and powershift transmission, equipped with JRB general purpose loader bucket with bolt-on cutting edge, hydraulic quick disconnect, rear counterweight, enclosed ROPS cab with light package, and 17.5R25 tires. In fair to good condition with fair to good tires. (Johnston)

**1995 VOLVO Model L150C Rubber Tired Loader**, s/n L150CV60521, powered by Volvo diesel engine and powershift transmission, equipped with general purpose bucket with bolt-on cutting edge, enclosed ROPS cab with heat and air conditioning, light package, and 26.5x25 tires. In fair to good condition with fair tires.

**1997 Komatsu Model WA450L-3 Rubber Tired Loader**, s/n A30240, powered by Komatsu SA6D125E diesel engine (s/n 34865154) and powershift transmission, equipped with JRB 3.5 cubic yard general purpose bucket with bolt-on cutting edge, enclosed ROPS cab, air conditioning, and 26.5-25 L4 type tires. In good condition. (Machine Will Be Sold With New Tires)

**1997 Komatsu Model WA450L-3 Rubber Tired Loader**, s/n A30260, powered by Komatsu SA6D125E diesel engine (s/n 34877386) and powershift transmission, equipped with JRB 3.5 cubic yard general purpose bucket with bolt-on cutting edge, enclosed ROPS cab, air conditioning, and 26.5-25 L4 type tires. In good condition. (Machine Will Be Sold With New Tires)

**JRB 48" Fork Attachment (JD TC54H/Komatsu WA-180) • JRB 46" Pallet Fork Attachment.** (Komatsu 180)

**TRACTOR LOADER BACKHOES, DEMOLITION HAMMER, AND ATTACHMENTS**

**1994 JOHN DEERE Model 410D, 4x4 Tractor Loader Extend-A-Hoe**, s/n T04100D800473, powered by John Deere diesel engine and shuttle transmission, equipped with general purpose loader bucket with bolt-on cutting edge, 24" digging bucket, AJB quick disconnect, auxiliary hydraulics, enclosed cab with heat, light package, and 12x16.5 front and 21Lx24 rear tires. In good condition with fair to good tires. (Purchased New) (Ferris)

**1988 CATERPILLAR Model 416, 4x4 Tractor Loader Extend-A-Hoe**, s/n 5PC06119, powered by Cat diesel engine and shuttle transmission, equipped with general purpose loader bucket, 24" digging bucket, enclosed ROPS cab, light package, and 8.25-20 front and 19.5x24 rear tires. In good condition with fair to poor tires. (Purchased New) (Johnston)

**1988 CATERPILLAR Model 416, 4x4 Tractor Loader Extend-A-Hoe**, s/n 5PC06132, powered by Cat diesel engine and shuttle transmission, equipped with general purpose loader bucket, 24" digging bucket, enclosed ROPS cab, auxiliary hydraulics, light package, and 10.5x20 front and 19.5Lx24 rear tires. In good condition with good tires. (Purchased New) (Johnston)

**JOHN DEERE Model 510 Tractor Loader Backhoe**, s/n 235604, powered by John Deere diesel engine and shuttle transmission, equipped with general purpose loader bucket, 24" digging bucket, enclosed ROPS cab and 14-17.5 front and 18.4-28 rear tires. In fair condition with poor to fair tires. (Johnston)

**TRAMAC BHR125 Hydraulic Demolition Hammer**, s/n 35205 (JD 510) • **ALLIED Ho-Pac 8700C Hydraulic Plate Compactor.** (Cat 416) • **19" Bolt-On Asphalt Cutting Wheel**

**UTILITY TRACTORS**

**YANMAR Model FX255, 4x4 Utility Tractor**, s/n 1551, powered by 3 cylinder diesel engine and powershift transmission, equipped with 3-point hitch, 4 speed PTO, light package, and 7-16 front and 11.2-24 rear tires. In good condition with good tires. (Kukurin)

**KUBOTA Model B7100HST, 4x4 Utility Tractor**, s/n 22010087, powered by diesel engine and hydrostatic transmission, equipped with general purpose loader bucket, 60" under deck mower, 3-point hitch, roll-bar, 20.5x8 front and 31x15.5 rear tires. In good condition with good tires.

**FORD Model 9N Utility Tractor**, powered by 4 cylinder gas engine and direct drive transmission, equipped with 5, brush mower. In good condition with good tires. (Kukurin)

**ROUGH TERRAIN CRANE AND AERIAL LIFT**

**1989 GROVE Model RT630, 30 Ton Hydraulic Rough Terrain Crane**, s/n 71332, powered by Cummins diesel engine and powershift transmission, equipped with 33'-80" 3-section hydraulic boom, main and auxiliary hoist, Kruger LMI system, heated cab, 4-sheave hook block, weighted hook, (4) hydraulic extending outriggers, and 16.00-25 tires. In good condition with good tires. (Kukurin)

**1995 GENIE Model Z-45-22, 4x4 Aerial Lift**, s/n Z45-002451, powered by Ford 4 cylinder gas/LP engine and hydrostatic transmission, equipped with articulated boom, and 14x17.5 tires. In good condition with good tires. (Kukurin)

**DIRECTIONAL BORING MACHINES, BENTONITE MIXING SYSTEM, AND EARTH SAW**

**2000 VERMEER Model Navigator D24X40A Directional Boring Machine**, s/n 1VRS160Z6Y1001327, powered by Cummins B3.9-C diesel engine and hydraulic drive, equipped with (36) 10x2 1/2" drill steels, Apex pump, swing-away rider console, auger front stabilizers and rear stabilizer, 87" wavy 12" drill steels, in good condition with good undercarriage. (00.472 Original Hours) (Kukurin)

**1999 VERMEER Model DT750 Bentonite Mixing System**, s/n 1VRT160D7X1000727, powered by Kubota 4 cylinder diesel engine, equipped with (2) 750 gallon poly water tanks, (2) additive hoppers with hydraulic pump, mounted on Seco Model SSP15, 16" Steel Flat Body with stake pockets. In good condition. (Meter Reads 0,717 Original Hours) (Kukurin)

**DITCH WITCH Model 105 Directional Drill**, s/n R1711528, powered by Deutz 4 cylinder diesel engine, equipped with 500 gallon poly water tank, gas powered travel motor, mounted on 1994 Charles Machine Works model TP15J tandem axle tilt deck trailer, VIN# 1DS000020R172L1528, equipped with 9.5x16.5 tires. In fair condition with good tires. (Kukurin)

**RICHMOND 24" Boring Machine**, powered by VM 2 cylinder diesel engine and 3 speed transmission, equipped with 10" main track, (2) 10" sections, 2 1/2" hex drive, and 40" of 8" auger. In good condition. (Ferris)

**RICHMOND 24" Boring Machine**, equipped with 10" main track, (2) 10" track sections, and miscellaneous heads and pushers. (Parts Only) (Ferris)

**VERMEER Model T600C Crawler Earth Saw**, s/n 333, powered by Detroit 4-71 diesel engine and hydraulic drive, equipped with Model T600, 84" saw attachment, front hydraulic stabilizers, 10.5" crawlers, and 20" TBG pads. In fair to good condition with good undercarriage. (Kukurin)

**PROFILERS AND ASPHALT PAVERS**

**1986 DYNAPAC Model PL1300 Profiler**, s/n 145, powered by Scania 6 cylinder diesel engine and hydraulic drive, equipped with 52" cutter drum, 24"x24" hydraulic folding discharge conveyor, 24"x60" drum to discharge conveyor, hydraulic leveling, rear steer, water system, light package, and cushion tires. In good condition with good tires. (Kukurin)

**1986 DYNAPAC Model PL1300 Profiler**, s/n 144, powered by Scania 6 cylinder diesel engine and hydraulic drive, equipped with 52" cutter drum, 24"x24" hydraulic folding discharge conveyor, 24"x60" drum to discharge conveyor, hydraulic leveling, rear steer, water system, light package, and cushion tires. In fair condition with fair to good tires. (Kukurin)

**1986 MIDLAND Model P960 Rubber Tired Asphalt Paver**, s/n 933, powered by John Deere 4 cylinder diesel engine and hydrostatic transmission, equipped with Allatt model 600A, 8'-16" hydraulic extending heated vibratory screed and 14.00x20 tires. In fair to good condition with good tires. (Kukurin)

**COMPACTOR EQUIPMENT**

**1997 HAMM Model HD12 Articulated Vibratory Roller**, s/n 39812, powered by Deutz 2 cylinder diesel engine and hydrostatic transmission, equipped with 47" smooth drum, drum cleaners, and water system. In good condition. (Kukurin)

**DRESSER Model S4-6AWD Double Drum Roller**, s/n 60474, powered by 3 cylinder diesel engine and hydrostatic transmission, equipped with 40" split front drum and 40" smooth rear drum, drum cleaners, water system, and tow package. In fair condition. (Kukurin)

**1986 DYNAPAC Model CC10 Double Drum Vibratory Roller**, s/n 586863, powered by Deutz diesel engine and hydrostatic transmission, equipped with 41.5" smooth drums, water system, and drum cleaners. In fair to good condition. (Johnston)

**Model P33/47 Vibratory Compactor**, s/n UNKNOWN, powered by Hatz 2 cylinder diesel engine and hydrostatic transmission, equipped with 47" split sheepfoot drum, engine protection, and canopy. In good condition with fair drums. (Kukurin)

(2) **RAMMAX Model P33/24 Walk Behind Trench Compactors**, powered by diesel engine and hydrostatic transmission, equipped with 33" split padfoot drum and drum cleaners. In good condition.

**RAMMAX Trench Compactor**, powered by Faryman diesel engine and hydrostatic transmission, equipped with 33" Sheepfoot split drums. (Kukurin)

**CONCRETE PUMPING AND FINISHING EQUIPMENT**

**ELBA Model BSH215 Portable Concrete Pump**, s/n 0191D1081, powered by Deutz V-8 diesel engine, equipped with 53"x40" rear hopper with grizzly and hydraulic auger, mounted on tandem axle carrier with (4) hydraulic stabilizers and 12x16.5 tires. In fair to good condition with good tires. (Kukurin)

**SMITH Model 499-A, 16 Cubic Feet Capacity Portable Concrete Mixer**, s/n 77005, powered by Wisconsin 4 cylinder gas engine, equipped with cable controlled feed hopper, wagon steer, and 7.50x16 tires. In good condition with good tires. (Kukurin)

**POWER CURBER Model 5500 Curb Machine**, s/n 55483036, powered by 4 cylinder diesel engine and hydraulic drive, equipped with 20"x9" conveyor, hydraulic raise and lower, speed control, (8) mules, 48" trimmer, water system, (3) 4" crawlers, and 8" pads. In fair to good condition with good undercarriage. (Kukurin)

**ALLEN 20' Self-Propelled Concrete Screed**, s/n UNKNOWN, powered by (2) Wisconsin 2 cylinder gas engines and hydraulic drive, equipped with front, rear, right, and left vibrators, and 9.50x16.5 tires. In good condition with good tires. (Kukurin)

**1989 GOMACO Model EC1000 Walk Behind Curb Machine**, s/n MC16443, powered by Kohler 12HP gas engine. In good condition. (Kukurin)

**MILLER Walk Behind Slip Form Curb Machine** (Kukurin)

(2) **ALLEN 8' Rider Concrete Power Trowels**, powered by gas engine. (Kukurin)

(4) **4' Walk Behind Gas Powered Concrete Power Trowels** (Kukurin)

**1998 STONE Model 65CM Portable Concrete Mixer**, s/n 0299210, powered by Honda 8HP gas engine, trailer mounted. In very good condition with very good tires. (Johnston)

**TARGET Model PAC-IV Walk Behind Concrete Saw**, s/n 255757, powered by Kohler 16HP gas engine. In good condition. (Ferris)

(2) **ILMEG Electric Powered Dust Collectors**, super structure with catwalk and (4) manual stabilizers. In good condition. (Kukurin)

**CATERPILLAR 455KW AND 125KW GEN SETS**

**1995 CATERPILLAR Model 3412 Generator Set**, s/n 81Z18599, powered by Cat 3412 diesel engine, equipped with 455 KW, 569 KVA, 480 volt, skid mounted. In good condition.

**1993 CATERPILLAR Model 3304B Generator Set**, s/n 83Z07816, powered by Cat 3304 diesel engine, equipped with 125 KW, 156 KVA, 480 volt, skid mounted. In good condition.

**AIR COMPRESSORS, PRESSURE WASHER, AND WELDERS**

**1996 GRIMMER SCHMIDT 185 CFM Portable Air Compressor**, s/n 185D-19163, powered by 3 cylinder diesel engine, equipped with 78-13 tires. In fair condition with fair tires. (Ferris)

**LEROI Model 260DE, 260CFM Portable Air Compressor**, powered by Detroit diesel engine, equipped with sound insulation. In fair to good condition with fair tires.

**SIMPSON Model Mega Blast 5000 Portable Pressure Washer**, s/n 9302140, powered by Kohler Commander 20 gas engine, equipped with 210 gallon poly water tank. In good condition. (Tank Damage) (Ferris)

**LINCOLN Model Weldon Power 68000 Portable Welder Generator**, s/n U1930800402, powered by Kohler 2 cylinder gas engine, equipped with leads. In fair to good condition. (Ferris)

**ALL TERRAIN CARRIER, QUAD RUNNERS, AND TILT-TOP TRAILERS**

**1994 ROLLIGON Model Duster 4x4 Articulated Amphibious All Terrain Carrier**, s/n 01194, powered by Isuzu 4 cylinder diesel engine and hydrostatic transmission with hi-lo drive, equipped with 6-personnel personnel bed with tarp rack, front mounted electric winch, enclosed cab with heat and air conditioning, light package, and 40x50x12 tires. In good condition with good tires. (Kukurin)

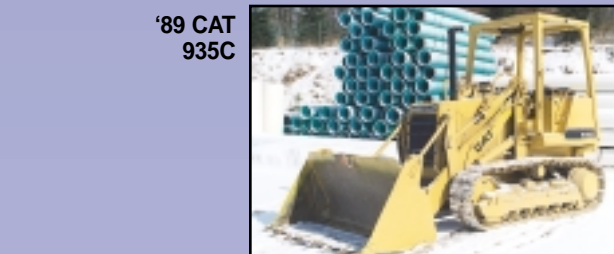
**2001 SUZUKI Model 300 King Quad 4x4 Quad Runner**, powered by 1 cylinder 4-stroke gas engine and manual transmission, equipped with Warn A2000 front mounted winch, ball hitch, and 24x8-11 tires. In good condition with good tires. (Purchased New) (Ferris)

**2001 SUZUKI Model 300 King Quad 4x4 Quad Runner**, powered by 1 cylinder 4-stroke gas engine and manual transmission, equipped with Warn A2000 front mounted winch, ball hitch, and 24x8-11 tires. In good condition with good tires. (Purchased New) (Ferris)

(2) **JOHN DEERE Model 21 Tilt Top Utility Trailers**, equipped with 20x10.00-8 tires. In good condition with good tires. (Ferris)



'95 KOMATSU D37P-5



'89 CAT 935C



'97 JOHN DEERE TC54H



'95 FIAT FR130.2



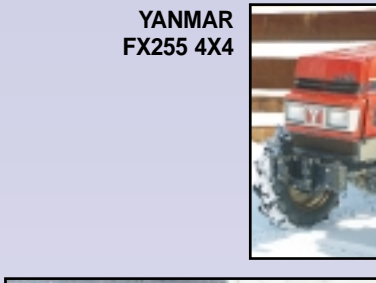
'88 KOMATSU WA180-1L



KOMATSU WA450L-3



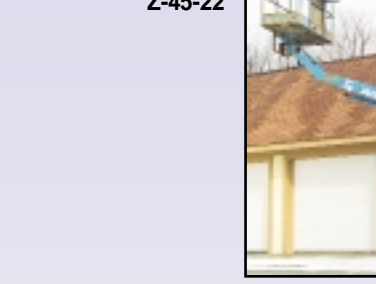
'94 JOHN DEERE 410D 4X4 EXTENDAHOE



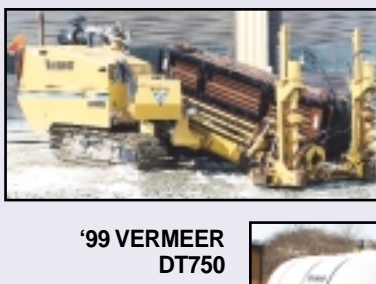
YANMAR FX255 4X4



KUBOTA B7100 4X4



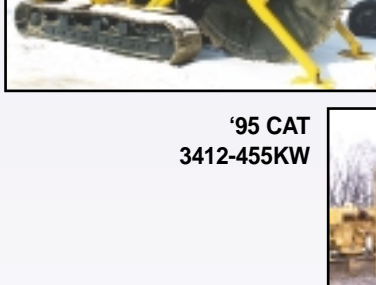
'95 GENIE Z-45-22



'00 VERMEER D24X40A



'99 VERMEER DT750



VERMEER T600C



'93 CAT 3304-125KW

**DUMP TRUCKS**  
**2000 PETERBILT Model 357 Tri-Axle Dump Truck**, powered by Cat C-12, 430HP diesel engine and Fuller 8 speed lo-to transmission, equipped with J&J 19" heated aluminum dump body with 3-way tailgate, 46,000# rear, spring suspension, 256" wheelbase, engine brake, limited slip differential, air ride seat, steel Budd wheels, aluminum fuel tank, cruise control, heated mirrors, air conditioning, and 11R24.5 tires. In good condition with good tires. (67,815 Original Miles) (Purchased New) (Johnston)

**1999 PETERBILT Model 357 Tri-Axle Dump Truck**, powered by Cat C-12, 430HP diesel engine and Fuller 8 speed lo-to transmission, equipped with J&J 19" heated aluminum dump body with 3-way tailgate, 46,000# rear, spring suspension, 256" wheelbase, engine brake, limited slip differential, air ride seat, steel Budd wheels, aluminum fuel tank, cruise control, heated mirrors, air conditioning, and 11R24.5 tires. In good condition with good tires. (62,564 Original Miles) (Purchased New) (Johnston)

**1996 INTERNATIONAL Model 5000 Tri-Axle Dump Truck**, powered by Cat 3406, 425HP diesel engine and Fuller 8 speed transmission with lo and lo-to, equipped with 18"6" aluminum dump body, 2-position Jake brake, air tailgate, power steering, power divider, air conditioning, heated mirrors, AM/FM cassette, 425/65R22.5 lift axles tires, 385/65R22.5 front and 11R22.5 rear tires. In good condition with good tires.

**1996 INTERNATIONAL Model 5000 Tri-Axle Dump Truck**, powered by Cat 3406, 425HP diesel engine and Fuller 8 speed transmission with lo and lo-to, equipped with 18"6" aluminum dump body, 2-position Jake brake, air tailgate, power steering, power divider, air conditioning, heated mirrors, AM/FM cassette, 425/65R22.5 lift axles tires, 385/65R22.5 front and 11R22.5 rear tires.

**1996 INTERNATIONAL Model 2574 Tri-Axle Dump Truck**, powered by Cummins N14 diesel engine and Fuller 8 speed transmission with lo and lo-to, equipped with Diamond 18"6" aluminum dump body, 46,000# rear and 18,000# front axles, 20,000# air/rtr 3rd axle with 385/65R22.5 tires, 3-position Jake brake, tarp system, air-shift PTO, power steering, power divider, aluminum Budd wheels, cruise control, 425/65R22.5 front and 11R24.5 rear tires. In good condition with fair to good tires.

**1993 MACK Model RD690S Tandem Axle Dump Truck**, powered by Mack EM7-300 diesel engine and 7 speed transmission, equipped with 16" steel dump body, 44,000# rear axle, 177" wheelbase, wetline, 2-stage engine brake, air conditioning, and 425/65R22.5 front and 11R24.5 rear tires. In good condition with good tires. (Ferris)

**1986 MACK Model DM686S Tandem Axle Dump Truck**, powered by Mack EM6-285 diesel engine and 6 speed transmission, equipped with 14" steel dump body, 20,000# front and 40,000# rear axles, air conditioning, heated mirrors, and 425/65R22.5 front and 11R22.5 rear tires. In fair to good condition with good tires. (Ferris)

**1978 KENWORTH Tandem Axle Dump Truck**, powered by Cummins diesel engine and Fuller transmission, equipped with 15"6" steel dump body and 11R24.5 tires. In good condition with good tires.

**1971 KENWORTH Tandem Axle Dump Truck**, powered by Cat diesel engine and Roadranger 13 speed transmission, equipped with 16" steel dump body and 10.00-22 tires. In fair to good condition with good tires. (Kukurin)

**FLATBED TRUCK AND TRUCK TRACTORS**

**1992 FREIGHTLINER Tandem Axle Flatbed Truck**, powered by Cat diesel engine and Fuller 9 speed transmission, equipped with 20'3" wood flatbed with stake pockets and ratchet straps, dual 150 gallon aluminum fuel tanks, (2) under body storage boxes, 2-stage engine brake, aluminum Budd front wheels, aluminum rear wheels, air conditioning, heated mirrors, work lights, and 275/80R24.5 tires. In good condition with good tires. (Ferris)

**1993 MACK Model CH613 Tandem Axle Truck Tractor**, powered by Mack E7-350 diesel engine and Fuller 9 speed transmission, equipped with 40,000# rear axle, 177" wheelbase, wetline, 2-stage engine brake, air slide 5th wheel, cruise control, air ride suspension, aluminum Budd front wheels, aluminum rear wheels, air conditioning, AM/FM cassette, dual aluminum fuel tanks, heated mirrors, and 11R22.5 tires. In good condition with good tires. (Kukurin)

**1988 WESTERN STAR Model 4964-2 Tandem Axle Truck Tractor**, powered by Cat 3406 diesel engine and Fuller 8 speed lo-to transmission, equipped with 12,000# front and 40,000# rear axles, 180" wheelbase, 2-stage engine brake, air slide 5th wheel, air conditioning, AM/FM radio, and 12R24 tires. In fair condition with fair tires. (Kukurin)

**1987 WESTERN STAR Model 4964-2 Tandem Axle Truck Tractor**, Fuller 8 speed lo-to transmission, equipped with 12,000# front and 40,000# rear axles, 180" wheelbase, 2-stage engine brake, air slide 5th wheel, air conditioning, AM/FM radio, and 12R24 tires. In fair condition with fair tires. (Missing Engine) (Parts Only) (Kukurin)

**MECHANICS TRUCKS**

**1997 INTERNATIONAL Model 4700 Low Profile Single Axle Mechanics Truck**, powered by International DT466 diesel engine and 6 speed transmission, equipped with LS&E model U1145, 11" open service body with 12" work bumper with vise, Autocrane 3203, 3.200# 6'-15" 3-section hydraulic boom, Atlas Copco 2-stage hydraulic air compressor, hydraulic generator, self-winding air hose reel, and 245/75R19.5 tires. In good condition with good tires. (Purchased New) (Ferris)

**1995 CHEVROLET Model Kodiak Mechanics Truck**, powered by V-8 gas engine and Eaton 5 speed transmission, equipped with Stahl saddle pack box service body, Knapheide tool body, 192" wheelbase, and 225/70R19.5 tires. In good condition with fair to good tires. (Kukurin)

**1988 CHEVROLET Model Custom Deluxe C30 Single Axle Mechanics Truck**, powered by gas engine and 4 speed transmission, equipped with Reading mechanics body with window guard, air conditioning, AM/FM radio, and 235/85R16 tires. In good condition with good tires. (Johnston)

**1979 GMC Model Sierra 5000 Single Axle Mechanics Truck**, powered by 8 cylinder gas engine and 4 speed transmission, equipped with 9' open mechanics body, 100 gallon fuel tank, AM/FM cassette, and 8.25-20 tires. In fair condition with good tires. (Ferris)

**1981 FORD Model F-600 Single Axle Mechanics Truck**, powered by 8 cylinder diesel engine and 5 speed transmission with 2 speed rear, equipped with 11' open service body, Autocrane 18' service boom, electric air compressor, (2) self-winding hose reels, 50 gallon fuel tank with manual pump, (2) manual outriggers, work lights, and 10.00R20 tires. In fair condition with good tires. (Not Running) (Kukurin)

**STEP VANS AND VAN BODY TRUCKS**

**1988 FORD Model B-600 Step Van**, powered by 6.8L diesel engine and automatic transmission, equipped with Boyertown 15' aluminum body, 26,500# GVWR, fold-up rear steps, roll-up rear door and side man door, 100 gallon fuel tank with electric pump, air brakes, and 2675/52R2.5 tires. In good condition with good tires. (Ferris)

**1988 FORD Model B-600 Step Van**, powered by 6.8L diesel engine and automatic transmission, equipped with Boyertown 15' aluminum body, 26,500# GVWR, fold-up rear steps, roll-up rear door and side man door, 100 gallon fuel tank with electric pump, air brakes, and 2675/52R2.5 tires. In good condition with good tires. (Ferris)

**1993 FORD Model E350 Single Axle Van Body Truck**, powered by V-8 gas engine and automatic transmission, equipped with 16' fiberglass van body with roll-up rear door, 100 gallon fuel tank with meter, hose and nozzle, air conditioning, AM/FM radio, and 215/85R16 tires. In good condition with poor tires. (Johnston)

**1988 FORD Model E350 Single Axle Van Body Truck**, powered by V-8 gas engine and automatic transmission, equipped with Morgan 13' fiberglass van body with roll-up rear door, 100 gallon fuel tank with meter, hose and nozzle, air conditioning, AM/FM radio, and 215/85R16 tires. In fair condition with fair tires. (Johnston)

**1985 FORD Model F-350 Single Axle Van Body Truck**, powered by 8 cylinder gas engine and 4 speed transmission, equipped with Morgan 13' aluminum van body with roll-up rear door, dual fuel tanks, 100 gallon fuel tank with electric pump, air conditioning, AM/FM cassette, and 235/85R16 tires. In good condition with good tires. (Ferris)

**1984 MACK/RENAULT Single Axle Cabover Van Body Truck**, powered by Renault 6 cylinder diesel engine and 5 speed transmission, equipped with Morgan 22'9" aluminum van body with roll-up rear and side doors, 12,000# front and 20,000# rear axle, and 10.00R20 tires. In good condition with good tires. (Ferris)

**1976 FORD Model F350 Single Axle Van Body Truck**, powered by 6 cylinder gas engine and 4 speed transmission, equipped with 11' van body, pull out ramp, swing rear door, 100 gallon fuel tank with electric pump, hose and nozzle, pintal hook, and 8.00x16.5 tires. In poor condition with fair tires. (Parts Only) (Johnston)

**FUEL & SEWER JET TRUCKS**

**1981 INTERNATIONAL Model F-2674 Tandem Axle Fuel Truck**, powered by Cummins NTC-250, 250HP diesel engine and Fuller 10-955LL transmission, equipped with 1978 Atlas model PK, 4,500

**HYDRAULIC EXCAVATORS AND ATTACHMENTS**

**1999 CATERPILLAR Model 345BL Hydraulic Excavator**, s/n 4SS01323, powered by Cat 3176 diesel engine and hydraulic drive, equipped with 11' dipper stick, Esco 50" digging bucket, JB Hendrix hydraulic quick disconnect, auxiliary hydraulics, 17'6" crawlers, and 36" TBG pads. In good condition with good undercarriage. (Purchased New) (Johnston)

**1998 CATERPILLAR Model 322BL Hydraulic Excavator**, s/n 2ES00469, powered by Cat 3116D diesel engine and hydraulic drive, equipped with 10' dipper stick, Esco 24" digging bucket, JB Hendrix hydraulic quick disconnect, auxiliary hydraulics, air conditioning, 31.5" TBG pads, and 15'3" crawlers. In good condition with good undercarriage. (Purchased New) (Johnston)

**1993 KOMATSU Model PC300LC-5L Hydraulic Excavator**, s/n A71361, powered by Komatsu diesel engine and hydraulic drive, equipped with 9' dipper stick, Geith 40" digging bucket, Hendrix quick disconnect, 16' crawlers, and 32" TBG pads. In good condition with good undercarriage. (Purchased New) (Johnston)

**1997 HITACHI Model EX220LC-3 Hydraulic Excavator**, s/n 15D-10818, powered by Hino diesel engine and hydraulic drive, equipped with 9'9" dipper stick, 40" digging bucket with side cutters and ripper pockets, auxiliary hydraulics, Hendrix hydraulic quick disconnect, enclosed cab with heat and air conditioning, 13' crawlers, and 24" TBG pads. In fair to good condition with fair undercarriage. (Ferri)

**1994 KOBELCO Model SK150LC Hydraulic Excavator**, s/n YM00210, powered by Isuzu diesel engine and hydraulic drive, equipped with 10' dipper stick, Esco 24" digging bucket with side cutters and ripper pockets, auxiliary hydraulics, Hendrix hydraulic quick disconnect, enclosed cab with heat and air conditioning, 13' crawlers, and 24" TBG pads. In fair to good condition with fair undercarriage. (Ferri)

**1993 KOMATSU Model PC120 Hydraulic Excavator**, s/n 42882, powered by Komatsu diesel engine and hydraulic drive, equipped with 8' dipper stick, Esco 36" digging bucket, JRB quick disconnect coupler, auxiliary hydraulics, light package, 11'3" crawlers, and 28" TBG pads. In good condition with fair undercarriage. (Purchased New) (Johnston)



'99 CAT 345BL



'93 KOMATSU PC300LC-5L



'94 KOBELCO SK150LC



'98 CAT 322BL



'97 HITACHI EX220LC-3



'93 KOMATSU PC120



RAMMER 5,000# DEMO HAMMER



BIRD EYE BRUSH CUTTING ATTACHMENT



(1) OF (2) '97 VOLVO A30C



VOLVO 5350

**1996 DAEWOO Model DH130-2 Hydraulic Excavator**, s/n 0887, powered by Daewoo diesel engine and hydraulic drive, equipped with 10' dipper stick, 24" digging bucket, auxiliary hydraulics, thumb bracket, enclosed cab with heat, light package, 11' crawlers, and 24" TBG pads. In good condition with good undercarriage. (Kukurin)

**RAMMER Model SS-83, 5,000# Hydraulic Demolition Hammer**, s/n 83AAA0175, equipped with Kobelco adaptor plate. In good condition. (Purchased New) (Ferri)

**BIRD EYE Hydraulic Brush Cutting/Grinding Attachment (Fits Komatsu PC220)** (Johnston)

**CAT 345:** ESCO Frost Tooth **KOMATSU PC300:** ESCO 52" & 24" Digging Bucket • Frost Tooth • (2) Universal Adaptor Plates **KOMATSU PC220:** ACTION EQUIPMENT Universal Adaptor Plate • Frost Tooth • (2) NPK Adaptor Plates • **KOMATSU PC200:** ESCO 24" Digging Bucket with side cutters **KOBELCO 480:** ESCO Frost Tooth **KOBELCO 250:** ALLIED 8801 Hydraulic Plate Compactor • **HENSLEY 36"** Digging Bucket • **WB Frost Tooth KOBELCO 160:** HENSLEY 40" Digging Bucket • ALLIED Hydraulic Plate Compactor

**ARTICULATED END DUMPS**

**1997 VOLVO Model A30C, 30 Ton 6x6 Articulated End Dump**, s/n A30CV2409, powered by Volvo diesel engine and powershift transmission, equipped with heated body, bed liners, enclosed ROPS cab with heat and air conditioning, and 23.5R25 tires. In good condition with good to very good tires. (Johnston)

**1997 VOLVO Model A30C, 30 Ton 6x6 Articulated End Dump**, s/n A30CV2478, powered by Volvo diesel engine and powershift transmission, equipped with heated body, bed liners, enclosed ROPS cab with heat and air conditioning, and 23.5R25 tires. In good condition with good tires. (Johnston)

**1986 VOLVO Model 5350, 25 Ton 6x6 Articulated End Dump**, s/n 3537, powered by Volvo diesel engine and powershift transmission, equipped with bed liners, enclosed ROPS cab with heat and air conditioning, and 23.5R25 tires. In good condition with good tires. (Kukurin)



HITACHI EX55UR



(2) OF (3) BOBCAT 863's



(2) '99 BOBCAT 864's



'00 NEW HOLLAND LS170



'00 NEW HOLLAND LS170

**MINI EXCAVATORS, SKID STEER LOADERS, AND ATTACHMENTS**

**HITACHI Model EX55UR Mini Excavator**, s/n 1BG00412, powered by 3 cylinder diesel engine and hydraulic drive, equipped with Hitachi model KY-TC55 hydraulic extending boom, s/n T1003, auxiliary hydraulics, 79" backfill blade, ROPS canopy, light package, 92" crawlers, and 15" rubber pads. In good condition with good undercarriage. (Kukurin)

**YANMAR Model B50 Mini Excavator**, s/n 00867B, powered by Yanmar diesel engine and hydraulic drive, equipped with 24" trenching bucket, 72" backfill blade, open canopy, and 18" TBG pads. In good condition with good undercarriage.

**1999 BOBCAT Model 864 Crawler Skid Steer Loader**, s/n 518911687, powered by Deutz diesel engine and hydrostatic transmission, equipped with high flow auxiliary hydraulics, 74" general purpose loader bucket, quick disconnect, 12" rubber tracks, enclosed ROPS cab with air conditioning. In good condition with good undercarriage. (Purchased New) (Johnston)

**1999 BOBCAT Model 864 Crawler Skid Steer Loader**, s/n 518911758, powered by Deutz diesel engine and hydrostatic transmission, equipped with high flow auxiliary hydraulics, 74" 4-in-1 bucket, quick disconnect, 12" rubber tracks, enclosed ROPS cab with air conditioning. In good condition with good undercarriage. (Purchased New) (Johnston)

**1999 BOBCAT Model 863 Skid Steer Loader**, s/n 514429240, powered by Deutz diesel engine and hydrostatic transmission, equipped with high flow auxiliary hydraulics, 74" general purpose loader bucket, quick disconnect, ROPS canopy, and 12-16.5 tires. In good condition with good tires. (Purchased New) (Johnston)

**1998 BOBCAT Model 863 Skid Steer Loader**, s/n 514420425, powered by Deutz diesel engine and hydrostatic transmission, equipped with high flow auxiliary hydraulics, 74" general purpose loader bucket, quick disconnect, enclosed ROPS cab with heat, light package, and 12x16.5 tires. In good condition with fair tires. (Purchased New) (Johnston)

**1997 BOBCAT Model 863H Skid Steer Loader**, s/n 514414862, powered by Deutz diesel engine and hydrostatic transmission, equipped with high flow auxiliary hydraulics, 74" general purpose loader bucket, quick disconnect, enclosed ROPS cab, light package, and 12x16.5 tires. In good condition with fair to good tires. (Purchased New) (Johnston)

**2000 NEW HOLLAND Model LS170 Skid Steer Loader**, s/n 170220, powered by 4 cylinder diesel engine and hydrostatic transmission, equipped with high flow auxiliary hydraulics, 66" general purpose loader bucket, hydraulic beyond, auxiliary electric, enclosed cab with heat, light package, and 10.00x16.5 tires. In good condition with poor tires. (Purchased New) (Ferri)

**2000 NEW HOLLAND Model LS170 Skid Steer Loader**, s/n 166476, powered by 4 cylinder diesel engine and hydrostatic transmission, equipped with high flow auxiliary hydraulics, general purpose loader bucket, quick disconnect, hydraulic beyond, auxiliary electric, rear side mounted counterweights, roof mounted poly water tank, enclosed cab with heat, light package, and 10-16.5 tires. In good condition with good tires. (Purchased New) (Ferri)

**2001 SCAT TRAK Model 1750D Skid Steer Loader**, s/n 103405, powered by Perkins diesel engine and hydrostatic transmission, equipped with 72" general purpose loader bucket, auxiliary hydraulics, ROPS canopy, light package, and 12x16.5 tires. In good condition with good tires. (Kukurin)

**1996 GEHL Model 5625DX Skid Steer Loader**, s/n 10998, powered by 4 cylinder diesel engine and hydrostatic transmission, equipped with 72" loader bucket, quick disconnect, hydraulic outlets, light package, and 12x16.5 tires. In fair condition with fair to good tires. (Kukurin)

**1994 GEHL Model 5625DX Skid Steer Loader**, s/n 9796, powered by 4 cylinder diesel engine and hydrostatic transmission, equipped with 72" loader bucket, quick disconnect, hydraulic outlets, light package, and 12x16.5 tires. In good condition with good tires. (Kukurin)

**1994 CASE Model 1845C Skid Steer Loader**, s/n JAF0142278, powered by Case diesel engine and hydrostatic transmission, equipped with auxiliary high flow hydraulics, 72" general purpose loader bucket, and ROPS canopy. In fair condition with good tires. (Hydrostatic Problems) (Johnston)

**Skid Steer Attachments:** BOBCAT WS78 Rock Saw • DIGTEC Hydraulic Milling Machine • (2) FFC LAF3576 Preparator Hydraulic Landscape Rakes • (2) ROCKHOUND 72A Hydraulic Landscape Rakes • (3) MELROE 74" Hydraulic 4-In-1 Buckets • BOBCAT 6' Hydraulic Broom • BOBCAT 12 Hydraulic Auger • (3 Sets) Steel Tracks



'01 SCAT TRAK

BOBCAT WS78 SAW ATTACHMENT



(1) OF (2) GEHL 5625DX



BOBCAT 6' BROOM

