

CRAWLER TRACTORS

1997 CATERPILLAR Model D9R Crawler Tractor, s/n 8BL01155, powered by Cat 3408 diesel engine and powershift transmission, equipped with U-blade with single tilt, rear counterweight, enclosed ROPS cab with air conditioning, light package, and 38" SBG pads. In good condition with good to very good undercarriage.

1997 CATERPILLAR Model D7R Crawler Tractor, s/n 2EN00479, powered by Cat 3306 diesel engine and powershift transmission, equipped with semi-U blade with single tilt, Mulberry 12-1/2' skidding boom, s/n RH182511H-97, Cat model 58N winch, EVAC system, enclosed ROPS cab with air conditioning, light package, and 27" SBG pads. In good condition with fair to good undercarriage. (Skidding Boom Will Be Sold Separately)



'99 HYUNDAI 250LC-3



'97 CAT D9R



MULBERRY SUPER BOOM



(1) OF (2) '96 VOLVO A25C



'97 CAT D7R

ARTICULATED END DUMPS

1996 VOLVO Model A25C, 6x6 25 Ton Articulated End Dump, s/n 5350V60904, powered by Volvo TD73KCE, diesel engine and 4 speed powershift transmission, equipped with enclosed ROPS cab with air conditioning, and 23.5x25 tires. In good to very good condition with very good tires.

1996 VOLVO Model A25C, 6x6 25 Ton Articulated End Dump, s/n 5350V60905, powered by Volvo TD73KCE, diesel engine and 4 speed powershift transmission, equipped with enclosed ROPS cab with air conditioning, and 23.5x25 tires. In good to very good condition with good to very good tires.

HYDRAULIC EXCAVATORS

1999 HYUNDAI Model Robex 450LC-3 Hydraulic Excavator, s/n E706EB11152, powered by Cummins M-11C diesel engine and hydraulic drive, equipped with 10' dipper stick, CP 34" rock bucket with tiger teeth, air conditioning, 17.5" crawlers, and 35.5" TBG pads. In good condition with fair to good undercarriage.

1999 HYUNDAI Model Robex 250LC-3 Hydraulic Excavator, s/n EN01E10130, powered by Cummins 5.9 liter diesel engine and hydraulic drive, equipped with 10' dipper stick, CP 48" digging bucket, air conditioning, 15.2" crawlers, and 31.5" TBG pads. In good condition with good undercarriage.



1440 Cowpath Rd. • Hatfield, PA 19440 • 215/361-9099 • Fax: 215/361-9212

NOTICE: Wachovia Securities, The CIT Group, Farm Credit, various local contractors and lending institutions have decided to liquidate recently off-lease equipment and items that are surplus to their present needs. Everything in the auction must sell to the highest bidder regardless of price!

LOCATION: The auction will be held at the Federal Self Storage yard, located at 2010 NE 7th Avenue, Dania, Florida, 33004

TERMS: Payment in full is required on sale day by cash, certified funds, or check with a bank letter of guarantee. Sample letter of guarantee: "We hereby guarantee the payment of our customer _____ written on his account up to _____ dollars for purchases at your auction sale on January 16, 2003." All guaranteed checks should be made payable to Hunyady Auction Co.

SALES TAX: All items in this auction are subject to the State of Florida 6% sales tax. Florida residents claiming resale must present copy of Annual Resale Certificate Form DR-13. Motor Vehicle Dealers must present copy of their motor vehicle dealer's license.

INSPECTION: Items will be available for inspection beginning Monday, January 13 from 8:00 a.m. until 5:00 p.m. or sale day morning from 7:00 a.m. until 10:00 a.m.

REMOVAL: After complete payment, all sale items may be removed on sale day as long as the removal activity is not disruptive to the sale and only until 5:00 p.m. Items may also be removed Friday and Saturday, January 17 & 18; Monday and Tuesday, January 20 & 21 from 8:00 a.m. until 5:00 p.m. All items must be removed no later than Tuesday, January 21, at 5:00 noon.

SALE SITE DIRECTIONS: FROM INTERSTATE 95: Exit #26 (595 East/Port Everglades/Ft. Lauderdale Airport) travel (2.2) miles to Exit #12C (Port Everglades/Ft. Lauderdale Airport) Follow exit ramp under highway and turn right at first traffic light onto NE 7th Avenue (DO NOT MISS THIS TURN - NO TURN AROUND BEFORE PORT) Follow NE 7th Avenue (4/10) mile to sale site on left (site is next to Hertz Rental Car)

FROM ROUTE 1: Turn onto Taylor Road (which is extension of Griffin Road East of Route 1) Travel (7/10) mile to stop sign and turn left, follow NE 7th Avenue (6/10) mile to sale site on right.

AIRPORT INFORMATION: This area is serviced commercially via Ft. Lauderdale International Airport. Rental cars are available.

MOTEL INFORMATION: Hampton Inn (954) 524-9900 • Sheraton (954) 920-3500



SALE SITE PHONE:
(800) 233-6898
(UNTIL JANUARY 6TH)
(954) 523-9843
(AFTER JANUARY 6TH)

SALE SITE FAX:
(954) 523-9572
(AFTER JANUARY 6TH)

FL AUCTION LICENSE NO: AB2215

ABSOLUTE AUCTION
RECENTLY OFF-LEASE & SURPLUS EQUIPMENT
THURSDAY, JANUARY 16, 2003 10:00 A.M.



(2) '96 VOLVO A25C

Fort Lauderdale, Florida



'97 CAT D9R



'98 MACK RD688S



'99 HYUNDAI EXCAVATORS



1440 COWPATH RD. • HATFIELD, PA 19440
215/361-9099 • Fax: 215/361-9212



PRE-SORTED
FIRST CLASS MAIL
US POSTAGE
PAID
BENSALEM, PA
PERMIT #182



'97 VOLVO L50C



'96 CAT 924F



(1) OF (2)
'96 CAT IT24F



(2) OF (3)
'96 CAT
416B 4X4



'95 BARKO
775B

RUBBER TIRED LOADERS AND INTEGRATED TOOL CARRIERS

1997 VOLVO Model L50C Rubber Tired Loader, s/n L50CP11218, powered by Volvo TD40GA, diesel engine and powershift transmission, equipped with quick disconnect general purpose loader bucket, quick disconnect 48" fork attachment, enclosed ROPS cab with air conditioning, light package, and 17.5x25 tires. In good condition with fair to good tires. (Fork Attachment Will Be Sold Separately)

1996 CATERPILLAR Model 924F Rubber Tired Loader, s/n 5NN00834, powered by Cat 3114IT diesel engine and powershift transmission, equipped with general purpose loader bucket with bolt on cutting edge, ROPS canopy, light package, and 17.5x25 tires. In good condition with fair to good tires.

1996 CATERPILLAR Model IT24F Integrated Tool Carrier, s/n 4NN0790, powered by Cat 3114 diesel engine and powershift transmission, equipped with quick disconnect general purpose loader bucket, quick disconnect 48" fork attachment, ROPS canopy, light package, and 17.5x25 tires. In good condition with good tires. (Fork Attachment Will Be Sold Separately)

1996 CATERPILLAR Model IT24F Integrated Tool Carrier, s/n 4NN0728, powered by Cat 3114 diesel engine and powershift transmission, equipped with quick disconnect general purpose loader bucket, quick disconnect 48" fork attachment, ROPS canopy, light package, and 17.5x25 tires. In good condition with fair tires. (Fork Attachment Will Be Sold Separately)

TRACTOR LOADER BACKHOES AND RUBBER TIRED MULCHER

1996 CATERPILLAR Model 416B, 4x4 Tractor Loader Backhoe, s/n 8ZK10225, powered by Cat 3054 diesel engine and shuttle transmission, equipped with general purpose loader bucket, 24" digging bucket, ROPS canopy, light package, and 12.5-80-18 front and 19.5L-24 rear tires. In good condition with fair to good tires.

1996 CATERPILLAR Model 416B, 4x4 Tractor Loader Backhoe, s/n 8ZK10723, powered by Cat 3054 diesel engine and shuttle transmission, equipped with general purpose loader bucket, 24" digging bucket, ROPS canopy, light package, and 12.5-80-18 front and 19.5L-24 rear tires. In fair to good condition with fair to good tires.

1995 CATERPILLAR Model 416B, 4x4 Tractor Loader Backhoe, s/n 8SG12585, powered by Cat 3054 diesel engine and shuttle transmission, equipped with general purpose loader bucket with fork brackets, 18" digging bucket, ROPS canopy, light package, and 12.5-80-18 front and 19.5L-24 rear tires. In fair to good condition with fair to good tires.

1995 BARKO Model 775B, 4x4 Rubber Tired Mulcher, s/n 20622, powered by Cummins 6 cylinder diesel engine and hydrostatic transmission, equipped with mulching head, enclosed ROPS cab with air conditioning and rear sweeps, and 66x43.00-25 flotation tires. In good condition with good tires.

VIBRATORY COMPACTORS AND ROLLERS

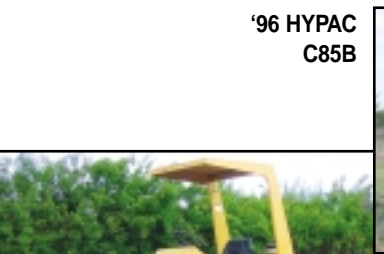
1996 HYPAC Model C850B Vibratory Compactor, s/n B188C02053T, powered by Cummins diesel engine and hydrostatic transmission, equipped with 84" smooth drum, drum drive, ROPS canopy, and 23.1x26 tires. In good condition with good to good tires.

1998 HYPAC Model C820A Vibratory Compactor, s/n A214C1637V, powered by Cummins 3.9L diesel engine and hydrostatic transmission, equipped with 56" smooth drum, drum drive, and ROPS canopy. In good condition with fair to good tires.

1995 INGERSOLL-RAND Model DD-22 Vibratory Tandem Roller, s/n 140810, powered by Deutz diesel engine and hydrostatic transmission, equipped with 39" smooth drums, water system, and ROPS post. In good condition.

1997 ALITEC/INGRAM Model AE315, 12 Ton 3-Wheel Roller, s/n 31502970036, powered by Perkins diesel engine and hydrostatic transmission, equipped with water system and ROPS canopy. In good condition.

INGRAM 3-Wheel, 12 Ton Roller, s/n 496042EB14



'96 HYPAC
C85B



'98 HYPAC
C820A



'95 IR DD-22

'97 ALITEC
AE315



(1) OF (2)
'97 WESTERN
STAR 4964EX



'96
PETERBILT 379



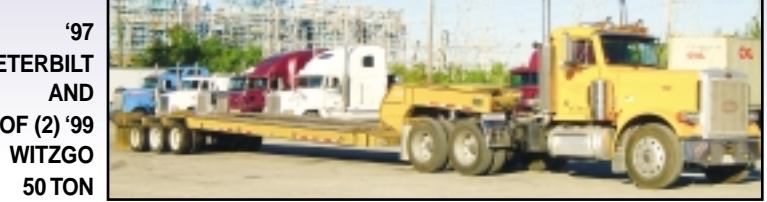
'93
INTL 4900



(2) OF (4) '97
MACK RD690S
TRI-AXLES



'97
PETERBILT
AND
(1) OF (2) '99
WITZCO
50 TON



DUMP TRUCKS

1998 MACK Model RD688S Tri-Axle Dump Truck, powered by Mack E7-350, 350HP diesel engine and Eaton Fuller 8LL, 10 speed transmission, equipped with Ox Bodies 16' steel dump body with air operated tailgate and electric tarp kit, 44,000# rear and 18,000# front axles, 84,000# GVW, engine brake, spring suspension, airlift 3rd axle, dual 59 gallon aluminum fuel tanks, air conditioning, AM/FM radio, 425/65R22.5 front and 11R22.5 rear tires. In good condition with fair tires.

1997 MACK Model RD690S Tri-Axle Dump Truck, powered by Mack EM7-300, 300HP diesel engine and Eaton Fuller 8LL, 10 speed transmission, equipped with Ox Bodies 17' steel dump body with air operated tailgate and electric tarp kit, 44,000# rear and 20,000# front axles, 84,000# GVW, engine brake, spring suspension, airlift 3rd axle with 425/65R22.5 tires, dual 59 gallon aluminum fuel tanks, air conditioning, AM/FM radio, 425/65R22.5 front and 11R22.5 rear tires. In good condition with good tires.

1997 MACK Model RD690S Tri-Axle Dump Truck, powered by Mack EM7-300, 300HP diesel engine and Eaton Fuller 8LL, 10 speed transmission, equipped with Ox Bodies 17' steel dump body with air operated tailgate and electric tarp kit, 44,000# rear and 20,000# front axles, 84,000# GVW, engine brake, spring suspension, airlift 3rd axle with 425/65R22.5 tires, dual 59 gallon aluminum fuel tanks, air conditioning, AM/FM radio, 425/65R22.5 front and 11R22.5 rear tires. In good condition with fair to good tires.

1997 MACK Model RD690S Tri-Axle Dump Truck, powered by Mack EM7-300, 300HP diesel engine and Eaton Fuller 8LL, 10 speed transmission, equipped with Ox Bodies 17' steel dump body with air operated tailgate and electric tarp kit, 44,000# rear and 20,000# front axles, engine brake, spring suspension, airlift 3rd axle with 445/65R22.5 tires, 83 gallon fuel tank, air conditioning, AM/FM radio, 445/65R22.5 front and 11R22.5 rear tires. In good condition with good tires.

1997 MACK Model RD690S Tandem Dump Truck, powered by Mack EM7-300, 300HP diesel engine and Eaton Fuller 8LL, 10 speed transmission, equipped with Ox Bodies 17' steel dump body with air operated tailgate and electric tarp kit, 44,000# rear and 20,000# front axles, 84,000# GVW, engine brake, spring suspension, airlift 3rd axle, dual 59 gallon aluminum fuel tanks, air conditioning, AM/FM radio, 435/65R22.5 front and 11R22.5 rear tires. In good condition with fair tires.

1998 MACK Model RD688S Tri-Axle Dump Truck, powered by Mack E7-350, 350HP diesel engine and Eaton Fuller 8LL, 10 speed transmission, equipped with Ox Bodies 16' steel dump body with air operated tailgate and electric tarp kit, 44,000# rear and 20,000# front axles, 84,000# GVW, engine brake, spring suspension, airlift 3rd axle, dual 59 gallon aluminum fuel tanks, air conditioning, AM/FM radio, 425/65R22.5 front and 11R24.5 rear tires. In fair condition with good tires. (Missing Engine Parts)

TRUCK TRACTORS AND LOWBOY TRAILERS

1997 WESTERN STAR Model 4964EX Tandem Axle Truck Tractor, powered by Cat 3406, 425HP diesel engine and Eaton Fuller RT-RTX, 15 speed transmission, equipped with 38,000# rear axles, walking beam suspension, wetline, 2-stage engine brake, PTO, double frame, airslide 5th wheel, aluminum front wheels, (2) 125 and 75/50 gallon aluminum fuel and hydraulic tanks, air conditioning, and 11R24.5 tires. In good condition with fair to good tires.

1997 WESTERN STAR Model 4964EX Tandem Axle Truck Tractor, powered by Cat 3406 diesel engine and Eaton Fuller 10 speed transmission, equipped with 40,000# rear and 12,000# front axles, 60,000# GVW, wetline, Jake brake, air slide 5th wheel, aluminum front wheels, (2) 100 gallon aluminum fuel tanks, air conditioning, deluxe interior, AM/FM radio, and 11R24.5 tires. In good condition with fair to good tires.

1997 WESTERN STAR Model 4964EX Tandem Axle Truck Tractor, powered by Cat 3406C diesel engine and Eaton Fuller 10 speed transmission, equipped with 40,000# rear and 12,000# front axles, 60,000# GVW, wetline, air slide 5th wheel, aluminum front wheels, (2) 87 gallon aluminum fuel tanks, air conditioning, AM/FM radio, deluxe interior cab, and 11R24.5 tires. In fair to good condition with good tires.

1993 PETERBILT Model 379 Tandem Axle Truck Tractor, powered by Cat 455HP, 6 cylinder diesel engine and Eaton Fuller 8 speed transmission, equipped with engine brake, air ride suspension, aluminum Budd wheels, (2) 80 gallon aluminum fuel tanks, headache rack, air conditioning, AM/FM radio, and 11R22.5 tires. In good condition with very good tires.

1999 WITZCO Model RG-50 Challenger, 50 Ton Tri-Axle Detachable Lowboy Trailer, equipped with wetline, ground bearing, 26' level deck, 11' deck over wheels, tie downs, outriggers, and 250/75R22.5 tires. In fair condition with fair tires.

1999 WITZCO Model RG-50 Challenger, 50 Ton Tri-Axle Detachable Lowboy Trailer, equipped with wetline, ground bearing, 22' level deck, 12' deck over wheels, tie downs, and 250/70R22.5 tires. In good condition with good tires.

FUEL/LUBE TRUCKS

1993 INTERNATIONAL Model 4900 Single Axle Fuel/Lube Truck, powered by International DTA-466 diesel engine and 5 speed transmission with 2 speed rear, equipped with Elliot lube body, approx. 800 gallon fuel tank, (1) 150 and (6) 100 gallon product tanks with pneumatic lubers and hose reels, 12HP gas powered air compressor, and 11R22.5 tires. In good condition with good tires.

1995 GMC Model Kodiak Single Axle Lube Truck, powered by Cat 3116 diesel engine and 5 speed transmission, equipped with 14'4" enclosed steel body with roll-up door, PTO, (6) product tanks to include: (2) motor oil, gear oil, hydraulic fluid, antifreeze, grease with hose reels, EVAC system, air compressor, and 10R22.5 tires. In good condition with good tires.

FORKLIFTS AND AERIAL LIFT

1996 SILENT HOIST Model FKSE 10, 20,000# Pneumatic Tired Forklift, s/n 21049, powered by electric motor and shuttle transmission, equipped with 104" mast, sideshift, and 60" forks. In fair to good condition.

1996 HYSTER Model S120XL, 12,000# Cushion Tired Forklift, s/n D004D02093T, powered by LP gas engine and shuttle transmission, equipped with 184" 3-stage mast, 48" forks, 42" wide carriage with hydraulic sideshift, ROPS canopy, 22x12x16 front and 18x8x12.125 rear cushion tires. In good condition with good tires.

1996 HYSTER Model S120XL, 12,000# Cushion Tired Forklift, s/n D004D02092T, powered by LP gas engine and shuttle transmission, equipped with 184" 3-stage mast, 48" forks, 42" wide carriage with hydraulic sideshift, ROPS canopy, 22x12x16 front and 18x8x12.125 rear cushion tires. In good condition with good tires.

1996 HYSTER Model S120XL, 12,000# Cushion Tired Forklift, s/n D004D02103T, powered by LP gas engine and shuttle transmission, equipped with 184" 3-stage mast, 48" forks, 42" wide carriage with hydraulic sideshift, ROPS canopy, 22x12x16 front and 18x8x12.125 rear cushion tires. In good condition with good tires.

1996 HYSTER Model S120XL, 12,000# Cushion Tired Forklift, s/n D004D02130T, powered by LP gas engine and shuttle transmission, equipped with 184" 3-stage mast, 48" forks, 42" wide carriage with hydraulic sideshift, ROPS canopy, 22x12x16 front and 18x8x12.125 rear cushion tires. In good condition with good tires.

1996 HYSTER Model S120XL, 12,000# Cushion Tired Forklift, s/n D004D02101T, powered by LP gas engine and shuttle transmission, equipped with 184" 3-stage mast, 48" forks, 42" wide carriage with hydraulic sideshift, ROPS canopy, 22x12x16 front and 18x8x12.125 rear cushion tires. In good condition with good tires.

HYSTER Model E80XL2, 8,000# Forklift, s/n C098D02170T, powered by electric motor and shuttle transmission, equipped with 183" 3-stage mast, and 48" forks. In fair to good condition.

HYSTER Model E80XL2, 8,000# Forklift, s/n C098D02284T, powered by electric motor and shuttle transmission, equipped with 183" 3-stage mast, and 48" forks. In fair to good condition.

1995 SNORKELIFT Model ATB-60ALCU, 60' Self-Propelled Manlift, s/n 9529020995, powered by Cummins 4 cylinder diesel engine and hydrostatic transmission, equipped with 65' working height, 30"x60" platform, 500# capacity, articulated boom, jib section, and 15x19.5 tires. In fair condition with fair to good tires.



'95 KODIAK



'95 MERCURY
GRAND MARQUIS



(2) '01 FORD
EXPEDITIONS



'97 FORD
EXPLORER

SPORT UTILITY VEHICLES, PICKUP TRUCKS, AND SEDANS

2001 FORD Model Expedition XLT, 4x4 Sport Utility Vehicle, powered by Triton V-8 gas engine and automatic transmission, equipped with full power package, air conditioning, rear climate controls, AM/FM cassette, and P265/70R17 tires. In good condition with good tires.

2001 FORD Model Expedition XLT 4-Door Sport Utility Vehicle, powered by Triton V-8 gas engine and automatic transmission, equipped with full power package, air conditioning, rear climate controls, AM/FM cassette, and P275/60R17 tires. In good condition with good tires.

1997 FORD Model Explorer Sport Utility Vehicle, powered by 6 cylinder gas engine and automatic transmission, equipped with full power package, leather seats, touch pad entry, AM/FM compact disc, air conditioning, and 235/75R15 tires. In good condition with fair to good tires.

1997 FORD Model F-250, 4x4 Pickup Truck, powered by Powerstroke 7.3 liter diesel engine and automatic transmission, equipped with dual fuel tanks, air conditioning, and 235/85R16 tires. In fair to good condition with good tires.

1997 FORD Model F-250 Pickup Truck, powered by Powerstroke 7.3 liter diesel engine and automatic transmission, equipped with dual fuel tanks, air conditioning, and 235/85R16 tires. In fair to good condition with fair tires.

1995 MERCURY Model Grand Marquis 4-Door Sedan, powered by 8 cylinder gas engine and automatic transmission, equipped with power package, leather seats, touch pad entry, air conditioning, AM/FM cassette, and 225/75R15 tires. In good condition with good tires.

1998 MERCURY Model Sable GS 4-Door Sedan, powered by 6 cylinder gas engine and automatic transmission, equipped with power package, air conditioning, AM/FM cassette, and P205/65R15 tires. In good condition with good tires.

POWER WASHERS AND WELDERS

CAMPBELL HAUSFELD 2400PSI and 2200PSI Gas Powered Power Washers • CAMPBELL HAUSFELD 1750PSI and 1300PSI Electric Power Washers • CAMPBELL HAUSFELD 80 Amp Electric Welders • CAMPBELL HAUSFELD Electric Arc Welder

CONTRACTORS TOOLS AND SHOP EQUIPMENT

CAMPBELL HAUSFELD Electric Air Compressors • AMERICAN 14" Chop Saws • AMERICAN Electric Angle Grinders • AMERICAN Hammer Drills • AMERICAN Battery Boosters • BIG RED Hydraulic Floor Jacks • BR 10 Ton Hydraulic Port-A-Powers • AMERICAN Wrench and Socket Sets • AMERICAN Chain Binders • EVERSTART Battery Chargers • CAMPBELL HAUSFELD Air Tools