



'97 ALTEC D945TR

'98 ALTEC D947TR, 4X4

DIGGER DERRICKS & POWER DOLLY

1998 ALTEC Model D947TR Hydraulic Digger Derrick, s/n 0898BA1523, equipped with 24,000# 35' 3-section hydraulic boom, operator station, 12,000# capacity rear heel winch, 2 speed digger, pole grabs, auxiliary hydraulic tool outlets, center mounted over axles on 1999 International Model 4800, 4x4 Single Axle Carrier, powered by Int'l DT466E diesel engine and automatic transmission, equipped with Altec line body, air brakes, (4) hydraulic outriggers, and 425/65R225 hi-flotation tires. In very good condition with good to very good tires. (23,664 Original Miles)

1997 ALTEC Model D945TR Hydraulic Digger Derrick, s/n 0597BA1028, equipped with 27,070# 35' 3-section hydraulic boom, operators station, 12,00# capacity rear heel winch, 2 speed digger, pole grabs, auxiliary hydraulic tool outlets, 18"x8' auger, radio remote control, center mounted over axles on 1998 International Model 4700 Line Body Truck, powered by Int'l DT466E diesel engine and automatic transmission, equipped with Altec line body, rear grounding wire reel and air reel, (4) hydraulic outriggers, and 11R22.5 tires. In very good condition with very good tires. (20,912 Original Miles)

TELELECT Model Captain 2000 Hydraulic Digger Derrick, s/n 2000-389-DE, equipped with 3-section hydraulic boom, dual operators stations, boom tip winch, 9"x8' and 14"x8' augers, mounted on 1975 AMG 6x6, 5 Ton Tandem Axle Flatbed Truck, powered by Mack 237HP diesel engine and 5 speed transmission, equipped with 11' flatbed, front bumper mounted winch, (2) hydraulic outriggers, and 11.00x20 tires. In fair condition with fair to poor tires.

ALTEC Model D820-BR Hydraulic Digger Derrick, s/n 1281-A0769, equipped with 12,000# capacity 2 speed digger, tip winch, pole grabs, 18"x8' auger, 12' flatbed, and (4) hydraulic outriggers, unmounted. In good condition.

THIERMANN Model 13-00A Power Dolly (Knuckleboom), s/n 113, powered by Briggs 16HP gas engine and hydrostatic transmission, equipped with 2,000# capacity knuckleboom, 7' radius with stinger "in" and 9' maximum reach from center with stinger "out", auxiliary hydraulic and electric outlets, (4) manual stabilizers, mounted on Parker tandem axle tagalong tilt deck trailer, s/n 109, with counterweights, surge brakes, and 20.5x8.00-10 tires. In good condition with good tires.

(5) 8' Augers: (1) 8", (2) 10", (1) 18", and (1) 20" • (2) Hex Adapters • Miscellaneous Accessories



THIERMANN POWER DOLLY



'98 ALTEC AA755L, 4X4



'96 TECO V5A-55TP



HOLAN 83 BRONCO

BUCKET TRUCKS

1998 ALTEC Model AA755L, 55' Material Handling Aerial Lift, s/n 0898BZ0556, equipped with 700# capacity single man basket, lower boom insert, material handler with 4' fiberglass jib pole and winch, hydraulic tool outlets, rear center mounted behind axles on 1999 International Model 4800, 4x4 Single Axle Carrier, powered by Int'l DT466E diesel engine and automatic transmission, equipped with Altec line body, air brakes, (4) hydraulic outriggers, and 425/65R22.5 hi-flotation tires. In good to very good condition with good to very good tires. (23,282 Original Miles)

1996 TECO Model V5A-55TP-2TFE2, 55' Aerial Lift, s/n 64719604, equipped with 600# capacity double man basket, hydraulic outlets, insulated lower boom, rear center mounted over axles on 1996 GMC Model Topkick Single Axle Line Body Truck, powered by Cat 3116 diesel engine and 6 speed transmission, equipped with air brakes, (2) hydraulic outriggers, and 11R22.5 tires. In good to very good condition with very good tires. (25,699 Original Miles)

HOLAN Model 83 Bronco 42' Aerial Lift, s/n 84-24452, equipped with single man basket, hydraulic outlets, lower boom insert, center mounted over axles on 1998 Ford Model F-800 Single Axle Line Body Truck, powered by Cummins 5.9L diesel engine and 6 speed transmission, equipped with full diamond plate line body with behind cab Reading storage boxes, electric/hydraulic brakes, (2) hydraulic outriggers, aluminum Budd wheels, and 10R22.5 tires. In good to very good condition with good to very good tires. (11,474 Original Miles)

1985 TECO Model Gemini G4-321-TBFS1, 32' Aerial Lift, s/n 21588508, equipped with 350# capacity single man basket and lower boom insert, unmounted. In fair to good condition. (Removed In Operational Condition)



1440 Cowpath Rd. • Hatfield, PA 19440 • 215/361-9099 • Fax: 215/361-9212

NOTICE: After (30+) successful years in the powerline and underground utility installation business the Dice family has decided to completely liquidate the equipment assets of those company divisions. However, UTILICO will continue to offer the very best in crane service and rental, sports lighting installation, and all related support service throughout the state of Kentucky. Everything in the auction is owned by UTILICO, Inc. and will positively sell to the highest bidder regardless of price!

LOCATION: The auction will be held at 100 Interstate Drive, Mount Sterling, Kentucky 40353.

AUCTIONEERS NOTE: This is a fine spread of well maintained, well spec'd, late model, mostly one owner equipment! Please plan on joining us for this absolute auction.

TERMS: Payment in full is required on sale day by cash, certified funds, or check with a bank letter of guarantee. Sample letter of guarantee: "We hereby guarantee the payment of our customer _____ written on his account up to _____ dollars for purchases at your auction sale on September 26, 2003." All guaranteed checks should be made payable to Hunyady Auction Co.

SALES TAX: Since auctioneers are considered "retailers" in the Commonwealth of Kentucky, all equipment will be subject to Kentucky sales tax at the rate of 6%. Sales tax on titled vehicles will be paid at time of registration in purchaser's home state.

INSPECTION: Items will be available for inspection beginning Monday, September 22, thru Thursday, September 25, 2003, from 8:00 a.m. until 5:00 p.m. or sale day morning from 7:00 a.m. until 9:00 a.m.

REMOVAL: After complete payment, all sale items may be removed on sale day as long as the removal activity is not disruptive to the sale and only until 5:00 p.m. Items may also be removed Monday, September 29, thru Thursday, October 2, from 8:00 a.m. to 5:00 p.m. All items must be removed no later than Thursday, October 2, at 5:00 p.m.

SALE SITE DIRECTIONS: *Traveling West on Interstate 64:* Exit 110 (Mount Sterling/Paris), at stop sign at end of ramp turn right onto U.S. Route 460 West, Kentucky Route 11 North. Follow (0.1) miles and turn right onto Interstate Drive. Proceed (0.2) miles to sale site on right.

Traveling East on Interstate 64: Exit 110 (Flemingsburg/Mount Sterling), at stop sign at end of ramp turn left onto U.S. Route 460 West, Kentucky Route 11 North. Follow (0.2) miles and turn right onto Interstate Drive. Proceed (0.2) miles to sale site on right.

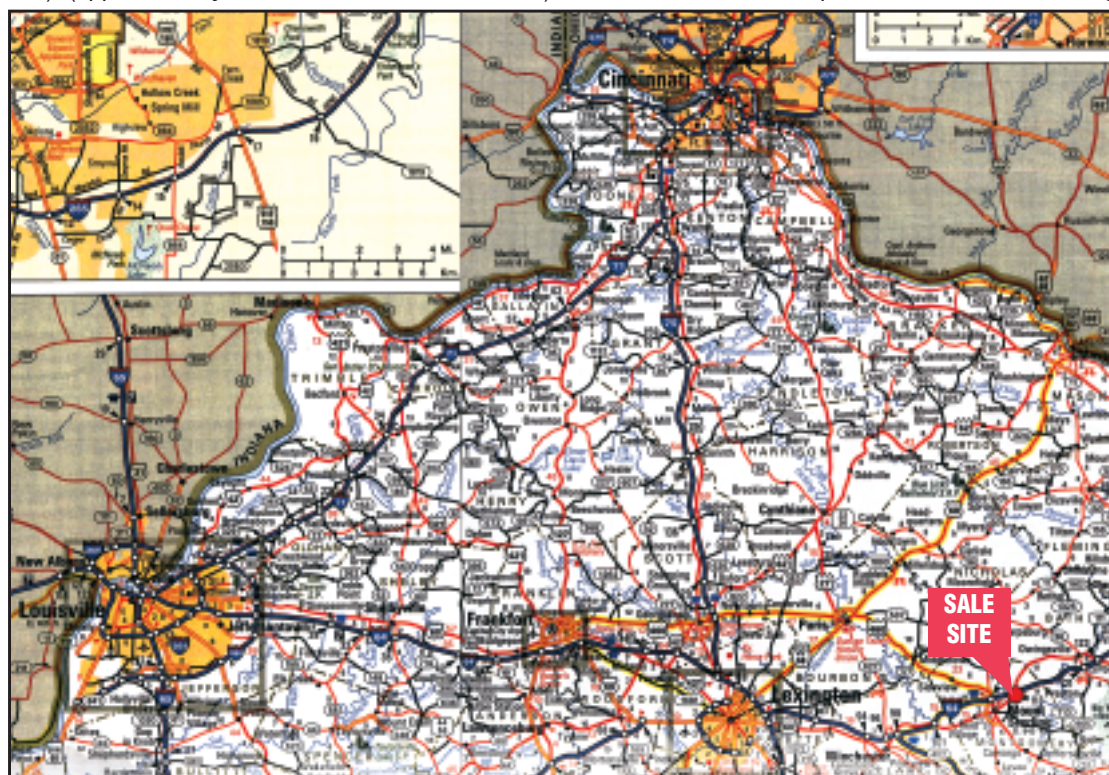
AIRPORT INFORMATION: This area is serviced commercially through the Lexington Bluegrass Airport (LEX) (approximately 34 miles from the sale site), Cincinnati/Northern Kentucky (CVG) (approximately 64 miles from the sale site). Private aircraft is accepted at the Mount Sterling-Montgomery County Airport (859) 498-1000 (approximately 4 miles from the sale site)

MOTEL INFORMATION: Fairfield Inn - Stone Trace Drive (859) 498-4050 • Ramada Limited (859) 497-9400 • (859) 498-4680 • Budget Inn (859) 498-9600

**SALE SITE
PHONE NUMBER:
859-499-3590**

**SALE SITE
FAX NUMBER:
859-499-3591**

KY AUCTION LICENSE NO: RP-07064



ABSOLUTE AUCTION

COMPLETE LIQUIDATION

FRIDAY, SEPTEMBER 26, 2003 - 9:00 A.M.



UTILICO, INC.
Powerline and Underground
Utility Divisions



Mount Sterling, Kentucky (Lexington Area)



'99 RO TC2863



'00 STERLING L7500



'01 TSE UP70.B



1440 COWPATH RD. • HATFIELD, PA 19440
215/361-9099 • Fax: 215/361-9212



PRE-SORTED
FIRST CLASS MAIL
US POSTAGE
PAID
BENSALEM, PA
PERMIT #182

BOOM TRUCK

1999 TEREX-R.O. Model TC2863, 15 Ton Hydraulic Boom, s/n 459039922-8, equipped with 25'-63" 3-section hydraulic boom with 24'-40" telescopic jib, anti-two block system, 48" fork attachment, headache ball, dual operators controls, mounted on 1999 GMC Model C7500 Single Axle Flatbed Truck, powered by Cat 3126, 210HP diesel engine and 5 speed transmission with 2 speed rear, equipped with 18" flatbed, 12,000# front and 21,000# rear axles, air brakes, aluminum Budd wheels, (4) hydraulic outriggers, air conditioning, AM/FM stereo, and 11R22.5 tires. In very good condition with very good tires. (9,116 Original Miles)



WAGNER SMITH T-4DP19.80



WAGNER SMITH T-BWT-3-31RC

WIRE STRINGING EQUIPMENT, UNDERGROUND TUGGER, & ACCESSORIES

1996 WAGNER SMITH Model T-4DP-19.80, 4-Drum Puller, s/n 1W9MP1315TB161012, powered by John Deere 3 cylinder diesel engine, equipped with 3,300# capacity line pull, 775 ft./min. max. capacity, 6,000 ft. 5/8" rope per bundle, mounted on single axle trailer with electric brakes and 9.50-16.5LT tires. In very good condition with very good tires. (70 Original Hours)

1999 WAGNER SMITH Model T-BWT-3-31RC Bullwheel Tensioner, s/n 1W9BT1619XC161044, equipped with 3,000# line pull capacity, neoprene-lagged drums, reel stand with disc brakes, electric brakes on single axle trailer, and 11R17.5 tires. In good to very good condition with very good tires.

2001 TSE Model UP70.B Underground Tugger, s/n 24066012601010000, powered by V-8 gas engine, equipped with 7,000# line pull capacity, 2 speed puller, air compressor, air hose reel, mounted on single axle trailer, with manual stabilizers and 9.50-16.5 tires. In very good condition with very good tires. (115 Original Hours)

WESTERN Power LV100 Tensioner, s/n 127

Stringing Blocks: (256) **BETHEA 7"** with bases • (15) **BETHEA** (without bases) • (36) Miscellaneous Blocks & Bases • (4) **PENGO** Reel Stands with brakes • Cable Lasher • (42) **HASTINGS** Single Phase Hot Arms • (6) **HASTINGS** Single Phase 2-Holder Hot Arms • (45) **HASTINGS** Model 7546 3-Phase Hot Arms • (4) **HASTINGS** Dead-End Layout Arms • (5) **A.B. CHANCE** Model H4809W Single Phase Hot Arms • (4) **A.B. CHANCE** Model C400-1509 Single Phase Hot Arms • (13) **A.B. CHANCE** Model C400-1310 3-Phase Hot Arms • (71) **A.B. CHANCE** Model 4800-72 3-Phase Hot Arms • (2) **A.B. CHANCE** Model H-20 Crossarm Jibs • (16) **LITTLE MULE** Grips • (18) **KLEIN** Grips (Large) • (2) **KLEIN** Grips (Transmission Size) • (3) **KLEIN GUY** Grips (Small) • **KLEIN GUY** Grip (Large) • (18) **KLEIN** Conductor Grips (Small) • Miscellaneous **KLEIN** Grips: (6) Model 1656-60, (2) Model 1625-20, (4) Model 1613-40H, (4) Model 1684-5H, and (7) Model 1656-40H • (15) **CRESCENT** Conductor Grips (Large)

ALL-TERRAIN DUMPS

1992 BOMBARDIER Model N.C.D.2-MC All-Terrain Dump, s/n LD33618U504070W, powered by Perkins 4 cylinder diesel engine and hydraulic drive, equipped with 8' steel dump body, Braden 20,000# front bumper winch, 7,200# payload, 27 1/2" steel tracks, and enclosed cab.



(2) BOMBARDIER DUMPS

In good condition with good undercarriage. (Meter Reads 0,834 Hours)

1989 BOMBARDIER Model N.C.D.2-MC All-Terrain Dump, s/n LD21733U636357F, powered by John Deere 4 cylinder diesel engine and hydraulic drive, equipped with 8' steel dump body, Braden 20,000# front bumper winch, 7,200# payload, 27 1/2" steel tracks, and enclosed cab. In good condition with good undercarriage. (Meter Reads 0,587 Hours)



'89 WINDSOR EXTENDABLE

'02 BRINDLE (4) POSITION

REEL, POLE, & HOT STICK TRAILERS

2002 BRINDLE Model 4-RT218S Tandem Axle Reel Trailer, equipped with 5-position 4-reel trailer, (4) spindles with manual disc brakes, electric brakes, 21,000# GVWR, and 7.50x16 tires. In very good condition with very good tires. (Only Used Once!)

HOGG & DAVIS Model TR-25BE72-72 Single Axle 2-Position Reel Trailer, equipped with air brakes, coil springs, and 9.00x16 tires. In fair condition with fair tires.

Single Axle 2-Position Reel Trailer, equipped with 7.50x15 tires. In fair condition with good tires.

Single Axle 2-Position Reel Trailer with manual lowering rear reel, equipped with 7.00x15 tires. In fair to good condition with good tires.

1971 Single Axle 4-Position Reel Trailer, equipped with full reels of rope and covers and 12x16.5 tires. In fair to good condition with fair tires.

1989 WINDSOR Model PC8446-5TXT Single Axle Extendable Pole Trailer, equipped with electric brakes, 10,440# GVWR, and 7.50x16 tires. In good condition with good tires.

Single Axle Extendable Pole Trailer, equipped with 8.75x16.5 tires. In good condition with good tires.

A.B. CHANCE 14' Single Axle Hotstick Trailer, equipped with 6.50x16 tires. In fair to good condition with fair to good tires.

A.B. CHANCE Single Axle Hot Arm Trailer, approximately 16', equipped with 7.00x15 tires. In good condition with good tires.



'98 KENWORTH T600

(4) REEL ROPE TRAILER



AB CHANCE HOT STICK



DUMP & FLATBED TRUCKS

2000 STERLING Model L7500 Single Axle Dump Truck, powered by Cat 3126, 250HP diesel engine and Fuller Roadranger 9 speed transmission, equipped with RS 11' steel dump body with electric tarp kit, air tailgate, and coal chute, rear air outlets, air ride seat, air conditioning, heated mirrors, and 10.00-20 tires. In very good condition with very good tires. (8,707 Original Miles)

1998 KENWORTH Model T600 Single Axle Flatbed Truck, powered by Cummins 6C8.3 diesel engine and Fuller FS8206A, 6 speed transmission, equipped with 24' heavy duty aluminum flatbed, ratchet tie downs, air brakes, air conditioning, AM/FM stereo, and 11R22.5 tires. In good condition with good tires.

1995 FREIGHTLINER Model FL60 Single Axle Flatbed Truck With Gooseneck Hitch, VIN# 1FV3GFCOSL703379, powered by Cummins 5.9L, 190HP diesel engine and 6 speed transmission, equipped with 10' flat body, aluminum Budd wheels, air conditioning, AM/FM/cassette, and 245/70R19.5 tires. In good to very good condition with good tires.



MINI HYDRAULIC EXCAVATORS

2000 KOMATSU Model PC75R Mini Excavator, s/n 22E5200192, powered by Komatsu diesel engine and hydraulic drive, equipped with 7' dipper stick with hydraulic beyond, 18" digging bucket, 7'6" leveling blade, swing boom, Wain Roy manual quick disconnect, 9'3" crawlers, and 24" TBG pads. In good to very good condition with good undercarriage. (1,215 Original Hours)

2000 IHI Model 45NX Mini Excavator, s/n WG000363, powered by Isuzu 4 cylinder diesel engine and hydraulic drive, equipped with 5'6" dipper stick with hydraulic beyond, 24" digging bucket with hydraulic thumb attachment, 6'5" backfill blades, zero tail swing, enclosed cab, and 16"x8" rubber tracks. In very good condition with good undercarriage. (680 Original Hours)

2001 IHI Model 35NX Hydraulic Excavator, s/n WF000415, powered by Yanmar diesel engine and hydraulic drive, equipped with 5' dipper stick, swing boom, hydraulic beyond, 18" digging bucket, hydraulic expanding track frames, zero tail swing, enclosed cab, and 12"x7'3" rubber tracks. In very good condition with good to very good undercarriage. (937 Original Hours)

Digging Buckets: 24" (Fits Komatsu PC75R) • 12" (Fits IHI Excavators) • 24" (Fits IHI Excavators)



1998 NEW HOLLAND Model LX885 Skid Steer Loader, s/n 113142, powered by diesel engine and hydrostatic transmission, equipped with general purpose bucket, 48" fork attachment, auxiliary hydraulics and electric, enclosed ROPS cab with heat (missing front door), and 12-16.5 tires. In good condition with fair tires. (760 Original Hours) (Forks To Be Sold Separately)

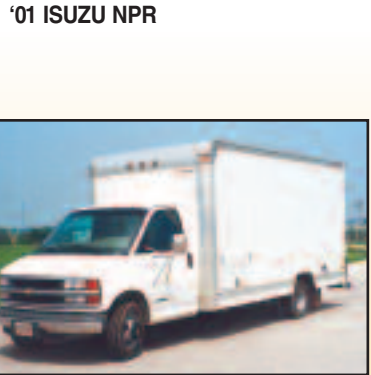
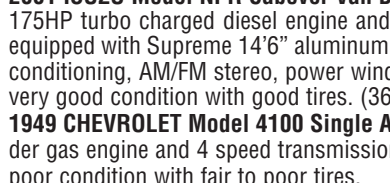
1999 SULLAIR Model 185DPO-JD, 185 CFM Portable Air Compressor, s/n 004-125845, powered by John Deere diesel engine, 100 psig, equipped with hose reel, trailer mounted with F78-14 tires. In very good condition with very good tires. (62 Original Hours)

YALE Model GLC040A8JUA077, 4,000# Solid Tired Forklift, s/n N403158, powered by 4 cylinder LP gas engine and shuttle transmission, equipped with 114" 2-stage mast, 60" forks, and FOPS canopy. In good condition with good tires. (7,842 Original Hours)



2001 ISUZU Model NPR Cabover Van Body Truck, powered by Isuzu 4 cylinder, 175HP turbo charged diesel engine and automatic transmission with overdrive, equipped with Supreme 14'6" aluminum enclosed body with roll-up rear door, air conditioning, AM/FM stereo, power windows and locks, and 215/85R16 tires. In very good condition with good tires. (36,184 Original Miles)

1949 CHEVROLET Model 4100 Single Axle Cab & Chassis, powered by 6 cylinder gas engine and 4 speed transmission, equipped with 7.00x20 tires. In fair to poor condition with fair to poor tires.



TRENCHER & SKID STEER LOADERS

2000 DITCH WITCH Model 8020T Rubber Tired Trencher, s/n 5T0062, powered by John Deere diesel engine and hydrostatic transmission, equipped with Model H812, 9' trencher attachment, s/n 2T2299, with 52" digging depth, rear sliding bar attachment, crumbing shoe, leveling blade, front hydraulic outlets, front counterweights, ROPS canopy, and 38x18.00-20 tires. In good condition with good to very good tires. (584 Original Hours)

2000 NEW HOLLAND Model LS190 Skid Steer Loader, s/n 195298, powered by New Holland 4 cylinder diesel engine and hydrostatic transmission, equipped with general purpose bucket, 48" fork attachment, auxiliary hydraulics, quick disconnect, 2 speed hydraulic system, ROPS canopy, and 12-16.5 tires. In good to very good condition with good tires. (860 Original Hours) (Forks To Be Sold Separately)

1998 NEW HOLLAND Model LX885 Skid Steer Loader, s/n 113142, powered by diesel engine and hydrostatic transmission, equipped with general purpose bucket, 48" fork attachment, auxiliary hydraulics and electric, enclosed ROPS cab with heat (missing front door), and 12-16.5 tires. In good condition with fair tires. (760 Original Hours) (Forks To Be Sold Separately)

(1 set) 12" Neoprene Tracks



'03 PACE 30'

UTILITY, STEAM CLEANER & TAG-A-LONG TRAILERS

2003 PACE Model SC8530TTA4, 30' Tri Axle Utility Trailer, set up with racks for stringing blocks and hot arms, equipped with drop-down rear door, curbside door, electric stabilizing jack, aluminum wheels, 18,000# GVWR, and ST235/80R16 tires. In very good condition with very good tires.

1997 PACE Model RT714TA2, 7'x14' Tandem Axle Steam Cleaner/Pressure Washer Trailer, equipped with Hotsy 1260A, 3,000 PSI steam cleaner/pressure washer, s/n H401200498, powered by Briggs & Stratton 16HP V-twin gas engine, equipped with 500 gallon poly water tank and hose reel. In good condition with good tires.

2000 CORN PRO Model UT-20 Tandem Axle Tag-A-Long Trailer, equipped with 20' deck with 48" ramps, 14,000# GVWR, and LT235/85R16 tires. In good condition with very good tires.

1999 CORN PRO Model 25+5 10K HD, 10 Ton Tandem Axle Tag-A-Long Trailer, equipped with 25' level deck with 5' adjustable beavertail and 5'9" ramps, (2) front stabilizers, electric brakes, and LT235/85R16 tires. In very good condition with good tires.

GATOR 16' Tandem Axle Tag-A-Long Trailer, equipped with 205/75R15 tires. In good condition with very good tires.

1998 JAY-RON Single Axle Tag-A-Long Trailer, equipped with 12'x8' deck with 15" steel sides, reel stand, and 9.50x16 tires. In fair to good condition with good tires.

QUAD RUNNERS & LAWN TRACTOR

2000 HONDA Model Foreman 450ES, 4x4 Quad Runner, powered by 450cc gas engine and electric shift program, equipped with 25x8-12 front and 25x10-12 rear tires. In good condition with good tires. (607 Original Miles)

2001 HONDA Model Foreman 450S, 4x4 Quad Runner, powered by 450cc gas engine and 5 speed transmission, equipped with 25x8-12 front and 25x10-12 rear tires. In good condition with good tires. (553 Original Miles)

1994 KUBOTA Model G2000 Lawn Tractor, s/n 10510, powered by Kubota 3 cylinder, 20HP liquid cooled gas engine and hydrostatic transmission, equipped with 62" deck with rear bagger. In very good condition. (392 Original Hours)

LINE TOOLS

(6) **GREENLEE** Hydraulic Presses (1 NEW) • **GREENLEE** Hydraulic Press (For Large Conductor) • (4) Reel Things • (3) 1/0 UG Grounds with elbows • **BURNDY** BCT 500 Cordless Battery Crimp Tool • **BURNDY** 750 Battool • **ENERPAC** Weight Indicator • **DYNATEL** 500A Cable Locator • **CHANCE** Super Tester • **BURNDY** Y750 Manual Hydraulic Press with dies • (3) **BURNDY** Y35-2 Manual Hydraulic Presses with dies • **BURNDY** 10,000 PSI Electric Hydraulic Pump • **BURNDY** Y46C 10,000 PSI Hydraulic Press • (2) **KEARNEY** Manual Hydraulic Presses (1 Long & 1 Short Handle) • (4) **GREENLEE FAIRMONT** Hydraulic Tamps • (10) **LITTLE MULE** 300 Hot Hoists • (2) **LITTLE MULE** 300DA Hot Hoists • **LITTLE MULE** 1 Ton Hot Hoist • (4) **LUG-ALL** 1 Ton Hot Hoist • (14) **LUG-ALL** 1/2 Ton Hot Hoists • **A.B. CHANCE** C309-0323 Hot Hoist • (3) Miscellaneous Cable hoists • (6) **LITTLE MULE** 3/4 Ton Chain Hoist (1 New) • **LITTLE MULE** 1 Ton Chain Hoist • **A.B. CHANCE** C309-0438, 3/4 Ton Chain Hoist • 3/4 Ton Coffing Hoist • (15) **BURNDY** MD-6 Pop Tools • (4) **KEARNEY** Pop Tools • Miscellaneous Bolt Cutters: (6) 24"; 18"; (3) 14"; (4) 30"; 36" • (4) **H.K. PORTER** Large Ratcheting Bolt Cutters • (3) **H.K. PORTER** Large Diameter Cable Cutters • **H.K. PORTER** Large Diameter Ratcheting Cable Cutters • (4) **H.K. PORTER** ASCR Small Bolt & Rod Ratcheting Cutters • (3) **H.K. PORTER** Copper & Aluminum Ratcheting Cutters • (4) **H.K. PORTER** Large Diameter Wire Rope & Large Rod Ratcheting Cutters • (2) Ratcheting Cable Cutters (Up To 1000 MCM Cable) • (2) Ratcheting Cutters (For Small ACSR) • (5) **GREENLEE** Cable Cutters • **KLEIN** Cable Cutters • (3) **HASTING** 18" Hot Cutters • (2)



'01 & '00 HONDA 4X4 QUAD RUNNERS

HASTINGS 24" Hot Cutters • **HASTINGS 30"** Hot Cutters • **H.K. PORTER 36"** Hot Cutter • (8) **TANAKA** 262R Gas Drill (1 New) • **ECHO** EDR 2400 Reversible Gas Drill • (3) **GREENLEE FAIRMONT** Hydraulic Drills • (4) Hydraulic Drills • **RACINE** Hydraulic Drill • (10) **OSH KOSH** Snap Diggers (1 New) • (2) Short Flat Shovels • (3) Pole Carriers • (4) Cant Hooks • (3) **A.B. CHANCE** C200T Pole Tongs • (4) Spade Shovels • (6) Regular Shovels • **OSH KOSH** Straight Spade • (7) Steel Hard Bars • (3) Straight Tamps • (3) Curved Tamps • (5) Anchor Busters • (2) Regular Handle Flat Shovels • Water Dipper • Capstan Heads • Fiberglass Jibs



STRINGING BLOCKS



LINE TOOLS

HOT STICKS, RUBBER GOODS, & TEST EQUIPMENT

Insulated Jumpers: (3) 4/0 Macs; (24) 2/0 Macs; (29) #2 AWG Macs; (3) 1/0 Macs; (3) #2 AWG Macs Clamp Style • **Phasing Sticks:** (2) Phasing Tester

Overhead; Phasing Tester UG Elbows; Phasing Tester UG Elbows, Hi-Pot Adapter, Overhead • **A.B. CHANCE Fiberglass Goods:** C403-1384 Ratchet Cable Cutters; (4) H4714-6 Roller Link Sticks; C403-3068 Clamp Stick; C403-3069 Clamp Stick; C403-1850 Elbow Puller; (3) H3046-12 Disconnect Sticks; (2) H1760-3 Universal Poles; (3) H1760-4 Universal Poles; (2) C403-0293 Grip All Clamp Sticks; C403-1036 Grip All Clamp Stick; (6) C400-1175 Hoist Link Sticks; C400-0517 Temp. Conductor Support; (2) C400-0812 Spiral Link Stick; (5) Miscellaneous Fiberglass Universal Sticks; (2) T400-1937 Transformer Jibs • (4) **HASTINGS** Telescopic Poles • (2) **A.B. CHANCE** H308-13 Disconnect Sticks • (2) **HASTINGS** Disconnect Sticks • (4) **A.B. CHANCE** Shotgun Sticks • (3) **Hastings** Shotgun Sticks • (2) **KEARNEY** Shotgun Sticks • **BODDENDIECK** Shotgun Stick • **A.B. CHANCE Cover Ups:** (3) C406-0164; (3) C406-0009; (3) C406-0182; (6) C406-0046; (9) M4931 • (3) Pole Cover Ups • (66) **A.B. CHANCE** C406-0181GA Conductor Cover Ups • (40) Rubber Blankets • (113) Rubber Conductor Cover Ups • (4) Insulator Hoods • **FISHER** Pipe & Cable Locator

CONTRACTOR/SHOP TOOLS & MISCELLANEOUS

GREENLEE 1818 Bender • **ENERPAC** Bender • **GREENLEE** Fish Tape System • **GREENLEE** PVC Blanket • (5) **HUSQVARNA** 257 & 141 Chain Saws • (2) **JONSERED** 2036 & 2046 Chain Saws • **HUSQVARNA** Walk Behind Rear Tire Roto-Tiller, powered by Briggs & Stratton 6HP gas engine • (UNUSED) **REDDY** RGH75001E, 7,000 Watt Gas Powered Generator, s/n 7169869, powered by Honda 13HP gas engine • (UNUSED) **REDDY** RGH55001E, 5,000 Watt Gas Powered Generator, s/n 7955342, powered by Honda 9HP gas engine • **TITAN** 3,750 Watt Gas Powered Generator • **ONAN** 6.5RV Gas Powered Generator • Military Surplus Gas Powered Generator • (2) **CAIRE** GK090350-HG, 2-Stage Horizontal Air Compressors, powered by Honda 9HP gas engines, equipped with electric start • **COLLO-CRIMP** Hose Crimper • **EMGLO** Portable Gas Powered Air Compressor, powered by Honda 5.5HP gas engine • **CAMPBELL HAUSEFELD** FP200300AV Small Electric Portable Air Compressor • **COLEMAN** Powermate Electric Vertical Shop Air Compressor • (2) Air Pigs • **MILLER** 225 Amp Electric Arc Welder • (4) **LINCOLN** SAE200, 200 Amp Electric Arc Welders • **LINCOLN** R3R-300, 300 Amp Electric Arc Welder • (5) **LINCOLN** R3R-400, 400 Amp Electric Arc Welders • **LINCOLN** Idealarc TM-300, 300 Amp Electric Arc Welder • **TITAN** 3" Gas Powered Trash Pump, powered by Tecumseh 5.5HP gas engine • **HONDA** WP30X, 3" Gas Powered Centrifugal Pump • **HONDA** WMP20X, 2" Gas Powered Trash Pump • **MULTIQUIP** 2" Gas

Powered Trash Pump • 1" Electric Submersible Pump • **ST 2"** Electric Submersible Pump • 2" Electric Submersible Pump • Manhole Blower, powered by Briggs & Stratton 3HP gas engine • 3,000 PSI Portable Pressure Washer, powered by **HONDA** 11HP gas engine • **TARGET** Walk-Behind Concrete Saw, powered by Kohler gas engine • **MULTIQUIP** Gas Powered Foot Compactor • **WACKER** VPG160 Gas Powered Plate Compactor • **MILWAUKEE** Electric Core Drill • 3" Hydraulic Underground Piercing Tool • (2) Pneumatic Paving Breakers • (2) **REDDY HEATER** 150,000 BTU Portable Heater • **GORTEN** P1-3 Electric Reamer • (12) **BIL-JAX** 5' Scaffolding Sections with cross braces, casters, and accessories • 18"x7" Aluminum Pick Board • (4) **KNAACK** Gang Boxes • **WERNER** 16' Fiberglass Extension Ladder • (2) 8' Fiberglass Step Ladders • **WERNER** 7' Aluminum Step Ladder • **HOMAK** Toolbox with assorted tools • **BLUE-POINT** 3/4" Pneumatic Impact Wrench • **DEWALT** DW006 Cordless Hammer Drill • **MAKITA** HP2010N Variable Speed 1/2" Electric Hammer Drill • **EVOLUTION** 230, 230mm Steel Cutting Electric Circular Saw • **SKIL-SAW** 5150, 7 1/4" Electric Circular Saw • **MAKITA** LS1030, 10" Electric Mitre Saw • **DEWALT** DW402, 4 1/2" Electric Angle Grinder • **BLACK & DECKER** 6112 Electric Angle Grinder • **ALL TRADE** 1973-G-6 Dual Wheel Bench Grinder • **MILT** Light Duty Bench Vice • **LITTLE MULE** 2,000# Chain Comealong • Portable Electric Work Light • (2) Jack Stands • **LARGE QUANTITY:** Shovels, Rakes, Posthole Diggers, Picks, Water Hose, Gas Cans, & Concrete Finishing Tools • **BEST** 500 Gallon Vacuum Pump, powered by Honda 5.5HP gas engine, equipped with aluminum tank. In very good condition • **CLAUSING** 5" Lathe, equipped with 7" throw, 3-jaw chuck, and 3 phase electric motor • (2) **MULTI-AMP** Single Phase High Voltage Test Units and (20) 50 Amp Pole Mount Transformers • (2) **KAWASAKI** EX100 Robot Spot Welders, equipped with (2) additional robots, control panels, and accessories • **LARGE QUANTITY INTER-LAKE** Pallet Racking with Cross Sections and Accessories • **READING** 9', 6-Compartment Open Top Mechanics Body, equipped with aluminum rollback door • (2) 500 Gallon Fuel Tanks, (1) with 12-volt pump • Pickup Fuel Tanks: (2) 200 Gallon Aluminum Diamond Plate, with 12-volt pumps • 50 Gallon Aluminum Diamond Plate • (12) Aluminum Diamond Plate Cross Toolboxes • (2) Pickup Cross Toolboxes • **WEATHER GUARD** 3-Compartment Side Mount Toolbox • **STAHL** Behind Cab Frame Mount Utility Box • 8' Aluminum Ladder Rack with nylon tie-downs • (3) 8' Aluminum Bed Racks • 6' Fiberglass Bed Top • **VENTURO** 1,500# Extendable Bed Mount Jib with 12-volt electric hoist • (2) **WARN** M12000, 6 Ton 12-Volt Bumper Wincher, mounted on brush guards • (3) **WARN** M12000, 6 Ton 12-Volt Bumper Winches • **WARN** Series 12, 6 Ton 12-Volt Bumper Winch (mounted on Reese hitch) • **BRADEN** PTO Driven Winch • Truck Bench Seat (Fits '89-'99 **CHEVY** Kodiak or Topkick) • Int'l Truck Bumper • Dual Wheel Axle with electric brakes and 9.50x16.5 tires • 48" Heavy Duty Flip-Down Trailer Ramps • (4) 205/70R15 Tires • (5) 11.00x20 Tires with rims • Assorted Tires & Rims • Tire Chains • **LARGE QUANTITY** of Road Signs, Sign Stands, & Safety Cones • **LARGE QUANTITY** of Angle Iron • **LARGE QUANTITY** of 9' & 10' Wood & Steel Concrete Forms, Braces, Pins, and Accessories • Assorted Aluminum & Copper Electric Cable and Static Line • Miscellaneous Electrical Boxes, Lights, Hardware, and Accessories • Plastic Conduit • Building Materials • Office Furniture

STORAGE VAN BODIES

(2) **FRUEHAUF** 27' Single Axle Storage Van Trailers • **FRUEHAUF</**