

**1440 Cowpath Rd. • Hatfield, PA 19440 • 800-233-6898 • Fax: 215-361-9212**

**NOTICE:** The owners of Beyel Bros. Crane and Rigging have decided to offer items at Sealed Bid Auction, in order to re-align their fleet and make room for new equipment acquisitions. Beyel will continue to offer the finest in crane rentals, heavy hauling transportation and marine services. Beyel Bros, Inc reserves the right to accept or reject any or all bids received.

**DISMANTLEMENT/TRANSPORTATION SPECIAL NOTE:** Beyel Brothers, Inc. has agreed to dismantle and load all cranes sold onto buyers trailers, in accordance to Florida weight restrictions, at no additional fee. Additionally, Beyel will be interested in quoting rates for hauling to destination, delivery to ports, and further dismantlement for container shipping and other state's weight restrictions.

**DIGITAL INFORMATION SPECIAL NOTE:** Complete crane specifications, photo libraries, and maintenance information can be found at our website. Please visit [www.hunyady.com](http://www.hunyady.com) for additional information and more! This information is also available via email or fax and may be obtained by contacting the auction company.

**LOCATIONS:** All crane and hauling equipment will be offered in Cocoa, Florida with the exception of the Grove 9120, which will be sold as/is at Beyel's West Palm Beach facility. Marine equipment will be offered from docking area at Port Canaveral or boat yard on Merritt Island.

**INSPECTION:** All items will be available for inspection by appointment only, beginning Monday, October 26, 2009. Marine inspection: All bidders inspecting vessels located at Port Canaveral will need special clearance thru Homeland Security. Minimum 24 hour notice must be given for the specific date to inspect. Contact the auction for requirements. Inspections will be by appointment only. Please contact Hunyady Auction Company at (800) 233-6898 for a bid kit with location and contact numbers for site personnel.

**BID DEADLINE:** All bids must be received at our office not later than Wednesday, November 4, 2009 5:00PM EST

**BANK LETTER OF GUARANTEE:** If prior credit has not been established with Hunyady Auction Company, we will require that all bids submitted to be accompanied by a "Bank Letter of Guarantee" qualifying available funds supporting, at minimum, the total amount of bids submitted.

If financing purchases, we will require a "Letter of Pre-Approval" from financier.

Sample "Letter of Guarantee": "We hereby guarantee available funds for our customer \_\_\_\_\_, up to the amount of \$ \_\_\_\_\_ at the time of this writing on the date of \_\_\_\_\_."

All letters of guarantee must be on bank letterhead and signed by a qualified bank officer.

**FINANCING:** Financing is available. Please contact Susan at the auction company, (215) 220-2001 for complete details and terms.

**NOTIFICATION OF SUCCESSFUL BID:** Successful bidders will be notified no later than Friday, November 6, 2009 by 5:00pm EST.

**TERMS AND CONDITIONS:** Successful bidders are required to pay in full, via wire transfer, no later than Wednesday, November 11, 2009 for their purchases. No items will be removed until payment is made in full.

**SALES TAX:** Sales tax will be collected if applicable, unless a valid exemption is provided. Those cranes with Certificate of Title will not be subject to sales tax, this will be paid at the time of registration in purchaser's home state.

**BIDDING PROCESS:** Bid packages can be obtained by contacting Hunyady Auction Company and will be sent directly to you via US mail, overnight mail, e-mail ([sales@hunyady.com](mailto:sales@hunyady.com)), or fax. Bid packages will contain terms and conditions of the sale, complete equipment descriptions with corresponding lot numbers, and directions. All bid sheets must be signed and delivered to our home office on or before Wednesday, November 4, 2009, by 5:00pm EST.

**REMOVAL:** After complete payment is made, all items must be removed by Monday, November 30th

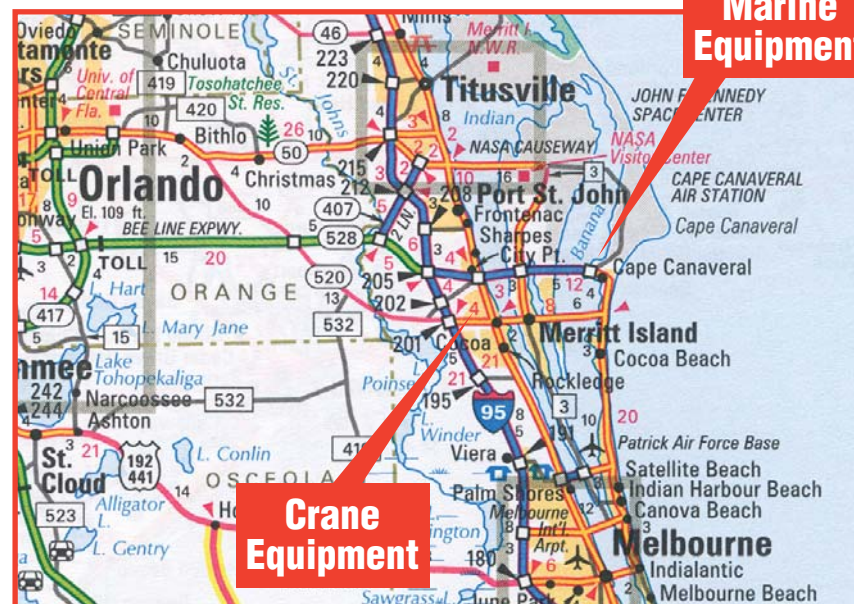
**FL AUCTION LICENSE NO.:** AB2215

**(2) HYDRAULIC EXCAVATORS**

**2004 CASE Model CX330 Hydraulic Excavator**, s/n DAC331294, powered by Case diesel engine and hydraulic drive, equipped with 13'6" dipper stick with hydraulic beyond, air conditioning, 33.5" TBG pads, and 16'3" crawlers. In good condition with good tires. (No Bucket)

**(1) OF (2) '04 CASE CX330'S**

**2004 CASE Model CX330 Hydraulic Excavator**, s/n DAC331310, powered by Case diesel engine and hydraulic drive, equipped with 10' dipper stick with hydraulic beyond, thumb bracket, 31.5" TBG pads, and 16'5" crawlers. In good condition with fair to good tires. (No Bucket)



**SEALED BID AUCTION**

**BID DEADLINE: WEDNESDAY, NOVEMBER 4, 2009 - 5:00PM EST**



**(2) LOCATIONS: COCOA AND PORT CANAVERAL, FLORIDA**



**(1) OF (3) TEREX 210 TON**



**'91 GROVE 150 TON**



**(1) OF (3) LINK-BELT 60 TON**



1440 COWPATH RD. • HATFIELD, PA 19440  
215/361-9099 • Fax: 215/361-9212

PRE-SORTED  
FIRST CLASS MAIL  
US POSTAGE  
**PAID**  
HAVERTOWN, PA  
PERMIT #45

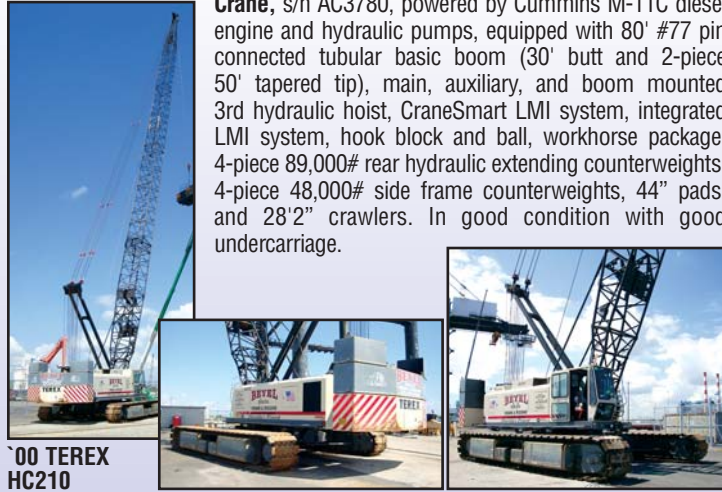


**(10) 210 TON TO 75 TON CRAWLER CRANES**

Note: All conventional rigs will sell with basic boom configuration, unless noted. There will be additional boom inserts for each, to purchase separately, however boom inventory is still being calculated at press time. The specific boom inventory will be outlined in the bid kit.

**#327 2000 TEREX HC210**

**#327 2000 TEREX/AMERICAN Model HC210, 210 Ton Conventional Crawler Crane**, s/n AC3780, powered by Cummins M-11C diesel engine and hydraulic pumps, equipped with 80' #77 pin connected tubular basic boom (30' butt and 2-piece 50' tapered tip), main, auxiliary, and boom mounted 3rd hydraulic hoist, CraneSmart LMI system, integrated LMI system, hook block and ball, workhorse package, 4-piece 89,000# rear hydraulic extending counterweights, 4-piece 48,000# side frame counterweights, 44" pads, and 28'2" crawlers. In good condition with good undercarriage.



'00 TEREX HC210

**#306 1999 TEREX HC210**



'99 TEREX HC210

**#306 1999 TEREX/AMERICAN Model HC210, 210 Ton Conventional Crawler Crane**, s/n 9903AC3730, powered by Cummins M-11C diesel engine and hydraulic pumps, equipped with 80' #77 pin connected tubular basic boom (30' butt and 2-piece 50' tapered tip), main, auxiliary, and boom mounted 3rd hydraulic hoist, CraneSmart LMI system, hook block and ball, workhorse package, 4-piece 89,000# rear hydraulic extending counterweights, 4-piece 48,000# side frame counterweights, 50" pads, and 28'2" crawlers. In good condition with good undercarriage.

**#268 1999 TEREX HC210**



'99 TEREX HC210

**#268 1999 TEREX/AMERICAN Model HC210, 210 Ton Conventional Crawler Crane**, s/n 9903AC3725, powered by Cummins M-11C diesel engine and hydraulic pumps, equipped with 80' #77 pin connected tubular basic boom (30' butt and 2-piece 50' tapered tip), main, auxiliary, and boom mounted 3rd hydraulic hoist, CraneSmart LMI system, PAT DS350 integrated LMI system (not operational), hook block and ball, workhorse package, 4-piece 89,000# rear hydraulic extending counterweights, 4-piece 48,000# side frame counterweights, 50" pads, and 28'2" crawlers. In good condition with good undercarriage.

**#324 1996 LINK-BELT LS-238H**



'96 LINK-BELT LS-238H



**#324 1996 LINK-BELT Model LS-238H, 150 Ton Conventional Crawler Crane**, s/n F516-5755, powered by Isuzu 6SAITPA-07 diesel engine and hydraulic pumps, equipped with 50' pin connected tubular basic boom with power pins, main and auxiliary hoists, ball, 3-piece 69,000# rear counterweights, 38" pads, and 23'10" crawlers. In good condition with good undercarriage.

**#359 1999 LINK-BELT LS-218H**



'99 LINK-BELT LS-218H



**#359 1999 LINK-BELT Model LS-218H, 100 Ton Conventional Crawler Crane**, s/n B6L19-1288, powered by Mitsubishi 6D24-TEB diesel engine and hydraulic pumps, equipped with 40' pin connected tubular basic boom, main and auxiliary hoists (prepped for 3rd hoist), ball, 2-piece 46,700# rear counterweights, integrated LMI system, 36" pads, and 21'3" hydraulic extendable crawlers. In good condition with good undercarriage.

**#266 1998 LINK-BELT LS-218H**



'98 LINK-BELT LS-218H



**#266 1998 LINK-BELT Model LS-218H, 100 Ton Conventional Crawler Crane**, s/n B6L18-8943, powered by Mitsubishi 6D24-TEB diesel engine and hydraulic pumps, equipped with 40' pin connected tubular basic boom, main and auxiliary hoists (prepped for 3rd hoist), ball, 2-piece 46,700# rear counterweights, 36" pads, and 21'3" hydraulic extendable crawlers. In good condition with good undercarriage.

**#259 1997 LINK-BELT LS-218H**



'97 LINK-BELT LS-218H



**#259 1997 LINK-BELT Model LS-218H, 100 Ton Conventional Crawler Crane**, s/n B6L17-6707, powered by Mitsubishi 6D24-TEB diesel engine and hydraulic pumps, equipped with 40' pin connected tubular basic boom, main and auxiliary hoists (prepped for 3rd hoist), ball, 2-piece 46,700# rear counterweights, 36" pads, and 21'3" hydraulic extendable crawlers. In good condition with good undercarriage.

**#285 1995 LINK-BELT LS-218H**



'95 LINK-BELT LS-218H



**#285 1995 LINK-BELT Model LS-218H, 100 Ton Conventional Crawler Crane**, s/n B6L15-3636, powered by Mitsubishi 6D24-TEB diesel engine and hydraulic pumps, equipped with 40' pin connected tubular basic boom, main and auxiliary hoists (prepped for 3rd hoist), ball, 2-piece 46,700# rear counterweights, 36" pads, and 21'3" hydraulic extendable crawlers. In good condition with good undercarriage.

**#277 2000 LINK-BELT LS-138H**



'00 LINK-BELT LS-138H



**#277 2000 LINK-BELT Model LS-138H Series II, 80 Ton Conventional Crawler Crane**, s/n H7J0-3893, powered by Isuzu A-6SDITQB diesel engine and hydraulic pumps, equipped with 40' pin connected tubular basic boom, main and auxiliary hoists, ball, 2-piece 50,500# rear counterweights, 36" pads, and 20'2" hydraulic extendable crawlers. In good condition with good undercarriage.

**#296 1997 LINK-BELT LS-138H**



'97 LINK-BELT LS-138H

**#296 1997 LINK-BELT Model LS-138H, 75 Ton Conventional Crawler Crane**, s/n B5K17-7713, powered by Isuzu A-6SDIT diesel engine and hydraulic pumps, equipped with 40' pin connected tubular basic boom, main and auxiliary hoists (prepped for 3rd hoist), ball, 2-piece 39,750# rear counterweights, integrated LMI, 36" pads, and 19'5" hydraulic extendable crawlers. In good condition with good undercarriage.

**(3) 150 TON TO 25 TON CONVENTIONAL TRUCK CRANES**

**#315 1991 GROVE HL-150T**



'91 GROVE HL-150T



**#315 1991 GROVE Model HL-150T, 150 Ton Conventional Truck Crane**, s/n 75020, powered by Cummins LTA10 diesel engine, equipped with 50' #76A pin connected tubular basic boom (2-piece 25' butt and 25' tip), main, auxiliary and 3rd hydraulic hoists, PAT E1 10 anti-2 block system, wind speed indicator, 2-piece 59,000# rear counterweights, mounted on 1991 Grove 84150G, 8x4 Carrier, powered by Cummins N14 diesel engine and Eaton Fuller 8LL, 10 speed transmission, equipped with engine brake, front hydraulic stabilizer, (4) removable hydraulic outriggers, 12,000# bumper counterweight, and 14.00R24 tires. In good condition with good to very good tires.

**#394 MANITOWOC 3900T**



MANITOWOC 3900T



**#394 1967 MANITOWOC Model 3900T Series I Vicon, 140 Ton Conventional Truck Crane**, s/n 39925, powered by 1998 Cummins NTA360C diesel engine and Vicon torque converter, equipped with 220' #9A pin connected angle/tubular main boom, main and auxiliary hoists, LSI 420 LMI system, 2-piece rear counterweights, Vicon air controls, 5-sheave hook block, mounted on Hendrickson 12x6x6 Carrier, s/n 1777, powered by Cummins diesel engine and Fuller 5 speed transmission with Spicer 4 speed auxiliary, equipped with (4) removable hydraulic outriggers, front bumper counterweight, and 14.00R20 tires. In good condition with good tires.

**1995 LITTLE GIANT 25 TON**



'95 LITTLE GIANT 25 TON



**1995 LITTLE GIANT Model 64, 25 Ton Conventional Truck Crane**, s/n 6495101, powered by Cummins 6 cylinder diesel engine and Funk torque converter, equipped with 60' pin connected angle main boom, main and auxiliary hydraulic hoists, fairlead, MicroGuard 424 LMI system, air/hydraulic controls, McKissick single sheave hook block, Rudomatic tagline, mounted on Model LG6464, 6x4 Carrier, s/n LG95701, powered by Cummins 6 cylinder diesel engine and Fuller Road Ranger 10 speed transmission, equipped with (4) removable hydraulic outriggers, 425/65R22.5 front and 11.00x20 rear tires. In good to very good condition with very good tires.

**(3) 165 TON TO 20 TON HYDRAULIC TRUCK CRANES**

**#1650 1997 DEMAG AC395**



**'97 DEMAG AC395**  
**#1650 1997 DEMAG Model AC395, 165 Ton All Terrain Crane,** s/n 76123, powered by Mercedes Benz OM366A, equipped with 42'-197' 6-section hydraulic boom, 30'-56' folding swing-away jib, 66,100# rear counterweights, 5-sheave sister hook block, ball, mounted on 1997 model K5308, 10x6x8 Carrier, powered by Mercedes OM442LA diesel engine and ZF Transmatik transmission, equipped with (4) hydraulic outriggers and 445/80R25 tires. In good condition with good tires.

**#233 1994 LORAIN MCH200E**



**'94 LORAIN 30 TON**  
**#233 1994 LORAIN Model MCH200E, 30 Ton Hydraulic Truck Crane,** s/n 95217, equipped with 30'-94' 4-section hydraulic boom, 26'-43' telescopic swing-away jib, MicroGuard 404 LMI system, Johnson 3-sheave hook block, ball, mounted on Model 428, 6x4 Carrier, s/n 50702, powered by Cummins diesel engine and Eaton Fuller 8LL, 10 speed transmission, equipped with front hydraulic stabilizer, (4) hydraulic outriggers, bumper mounted counterweight, 425/65R22.5 front and 11R22.5 rear tires. In fair condition with fair tires.

**#317 1992 GROVE Model TM9120, 120 Ton Hydraulic Truck Crane,** s/n 77158, powered by Cummins diesel engine, equipped with 42'-130' 4-section hydraulic boom, 33'-58' telescopic swing-away jib, 6-piece 23'-116' off settable jib (with possible lengths of 74', 88', 102', and 116'), main and auxiliary hoists, mounted on 1992 Grove 8x4 carrier, powered by Cummins diesel engine and Eaton Fuller 8LL, 10 speed transmission, equipped with front hydraulic stabilizers, 3-position engine brake, 17.5R25 front and 14.00R24 rear tires. (Damaged-Machine Rolled Over) (Located At West Palm Beach Yard)

**#307 1997 TEREX T220**



**'97 TEREX 20 TON**  
**#307 1997 TEREX Model T220, 20 Ton Hydraulic Truck Crane,** s/n 95308, equipped with 30'-94' 4-section hydraulic boom, LMI system, 4-sheave hook block, ball, mounted on Model 428, 6x4 Carrier, powered by Cummins diesel engine and Eaton Fuller 8LL, 10 speed transmission, equipped with front hydraulic stabilizer, (4) hydraulic outriggers, aluminum diamond plate deck, aluminum Budd wheels, 425/65R22.5 front and 11R22.5 rear tires. In good condition with fair tires.

**1988 GROVE AT422**

**'88 GROVE AT422**  
**1988 GROVE Model AT422, 22 Ton All Terrain Crane,** s/n 70343, equipped with 27'-70' 3-section hydraulic boom, 25'-43' telescopic swing-away jib, Johnson 3-sheave hook block, ball, mounted on 1988 Grove 4425G, 4x4x4 Carrier, powered by Cummins diesel engine and automatic transmission, equipped with (4) hydraulic outriggers, and 16.00R20 tires. In fair to good condition with good tires.

**BOOM TRUCKS AND TOWER ASSEMBLY**

**#360 1998 USTC 32 TON**



**'98 USTC 32 TON**  
**#360 1998 USTC Model Taxi-King 32 Ton Boom Truck,** s/n X400003747, equipped with 28.8'-74.4' 3-section hydraulic boom, 26'-45' telescopic swing-away jib, Wylie LMI system, 3-sheave hook block, ball, rear mounted swing cab mounted on 1998 Ford Tandem Axle Chassis, powered by Cummins diesel engine and Eaton Fuller 8LL, 10 speed transmission, equipped with 40,000# rears, 18,000# front axle, air conditioning, (4) hydraulic outriggers, 425/65R22.5 front and 11R22.5 rear tires. In fair to good condition with fair tires.

**#329 1997 USTC 17 TON**



**'97 USTC 17 TON**  
**#329 1997 USTC Model 1700JBT, 17 Ton Boom Truck,** s/n X40000363, equipped with 28'-70' 3-section hydraulic boom, single sheave block, ball, behind cab mounted on 1998 International 4700 Single Axle Flatbed Truck, powered by Int'l T444E diesel engine and Int'l 6 plus, 7 speed transmission, equipped with 20'6" flatbed, air conditioning, cruise control, front hydraulic stabilizer, (4) hydraulic outriggers, and 11R22.5 tires. In good condition with fair to very good tires.

**#295 1998 TEREX 14 TON**



**'98 TEREX 14 TON**  
**#295 1998 TEREX Model TC-2863, 14 Ton Boom Truck,** s/n 4580298007, equipped with 25'-63' 3-section hydraulic boom, 24' swing-away jib, PAT anti-2 block system, ball, rear mounted on 1992 International 4900 Tandem Axle Flatbed Truck, powered by Int'l DT466 diesel engine and Eaton Fuller 10 speed transmission, equipped with 16' steel flatbed, (4) hydraulic outriggers, and 295/75R22.5 tires.

**(2) LORAIN Model L790 Tower Assemblies,** equipped with 25' tower butt, 35' tip, backstays, (2) 30' tower inserts, (1) 20' tower insert, 30' crane butt, and (2) 10' jib inserts. In fair condition.

**(8) 175 TON TO 35 TON ROUGH TERRAIN CRANES**

**#309 2000 TEREX RT175**



**'00 TEREX RT175**  
**#309 2000 TEREX Model RT175, 75 Ton Hydraulic Rough Terrain Crane,** s/n 58232 (from records), powered by Cummins diesel engine and powershift transmission, equipped with 40.5'-126' 4-section hydraulic boom, 38'-60' telescopic swing-away jib, main and auxiliary hoists, Greer RC1510 LMI system, 4-sheave hook block, (4) hydraulic outriggers, and 29.5x25 tires. In good condition with good tires.

**#265 1999 LINK-BELT RTC-8060**



**'99 LINK-BELT RTC-8060**  
**#265 1999 LINK-BELT Model RTC-8060, 60 Ton Hydraulic Rough Terrain Crane,** E119-2437, powered by Cummins 8.3L diesel engine and powershift transmission, equipped with 35.5'-110' 4-section hydraulic boom, 34'-56' folding swing-away jib, main and auxiliary hoists, Microguard 434 LMI system, 3-sheave hook block, ball, (4) outriggers, and 29.5x25 tires. In good condition with very good tires.

**#265 1999 LINK-BELT RTC-8060**



**'98 LINK-BELT RTC-8060**  
**#268 1998 LINK-BELT Model RTC-8060, 60 Ton Hydraulic Rough Terrain Crane,** s/n E118-0285, powered by Cummins 8.3L diesel engine and powershift transmission, equipped with 35.5'-110' 4-section hydraulic boom, 34' swing-away jib, main and auxiliary hoists, MicroGuard 434 LMI system, hook block, ball, (4) hydraulic outriggers, and 29.5x25 tires. In good condition with good tires.

**#269 1998 LINK-BELT RTC-8060**



**'98 LINK-BELT RTC-8060**  
**#269 1998 LINK-BELT Model RTC-8060, 60 Ton Hydraulic Rough Terrain Crane,** s/n E118-8744, powered by Cummins diesel engine and powershift transmission, equipped with 34'-110' 4-section hydraulic boom, main and auxiliary hoists, Microguard 434 LMI system, Koehring 55 ton 5-sheave hook block, Johnson 220# ball, (4) outriggers, and 29.5x25 tires. In good condition with good tires.

**#271 2000 TEREX Model RT450, 50 Ton Hydraulic Rough Terrain Crane,** s/n 12424, powered by Cummins 6BTA5.9 diesel engine and powershift transmission, equipped with 33'-105' 4-section boom, swing-away jib, main and auxiliary hoists, and 26.5x25 tires. In good condition with good tires.  
**#323 1999 TEREX Model RT450, 50 Ton Hydraulic Rough Terrain Crane,** s/n 11147, powered by Cummins 6BTA5.9 diesel engine and powershift transmission, equipped with 33'-105' 4-section boom, swing-away jib, main and auxiliary hoists, and 26.5x25 tires. In good condition with good tires.

**#364 1999 GROVE RT640C**



**'99 GROVE RT640C**  
**#364 1999 GROVE Model RT640C, 40 Ton Hydraulic Rough Terrain Crane,** s/n 220995, powered by Cat 3116 diesel engine and powershift transmission, equipped with 34'-105' 4-section hydraulic boom, 29'-51' telescopic swing-away jib, PAT DS350 integrated LMI system, 2-sheave hook block, air conditioning, (4) hydraulic outriggers, and 23.5R25 tires. In good condition with fair to good tires.

**BADGER Model 4435, 35 Ton Hydraulic Rough Terrain Crane,** s/n 122111-A, powered by diesel engine and powershift transmission, equipped with 32'-80' 3-section hydraulic boom, 30' swing-away jib, main and auxiliary hoists, 4-sheave hook block, (4) hydraulic outriggers, and 26.5x25 tiers. In fair condition with fair tires.

**TRANSPORTER, LOWBOY TRAILERS, AND 400 TON LIFTING SYSTEM**

**NICOLAS 92 TON, 5-LINE**



**NICOLAS 92 TON, 5-LINE**  
**NICOLAS 5-Axle Line, 92 Ton Transporter Trailer,** s/n 0000002, powered by Deutz 2 cylinder diesel engine, equipped with 46'4"x10'2" load deck, 58'4" overall length, (8) tire per line, hydraulic stabilizers, hydraulic 5th wheel, gooseneck, curb weight 49,500#, GVWR 184,000#, and 10R17.5 tires. In good condition with fair tires. (Meter Reads 0,610 Hours)

**LOAD MASTER 100 TON**



**LOAD MASTER 100 TON**  
**#4573 1970 LOAD MASTER Model DDT 100 Ton Quad Axle Lowboy Trailer,** equipped with 21'x9'11" load deck, 17' deck over wheels, non-ground bearing detachable gooseneck, and 11R24.5 tires. In good condition with fair to good tires.

**SIEBERT 60 TON**



**SIEBERT 60 TON**  
**#4530 SIEBERT 60 Ton, 7-Axle Combination Lowboy/Beam Trailer,** equipped with 9'x27' level deck, 29' beam deck with chain dogs, tandem axle jeep, tandem axle stinger, and air ride suspension. In good condition with good tires.

**CHAUNCEY 60 Ton Lowboy Trailer**  
**LIFT SYSTEMS, INC. 400 Ton 4-Point Hydraulic Lifting System,** equipped with hydraulic jacking system with (4) 4-stage hydraulic rams, hydraulic power pack with 20HP gas engine, slide cylinders for travel, 9'11"-27'5" lift height.

**TUG BOATS, PUSH BOATS, WORK BOATS, AND BARGES**

**BAYLEE BEYEL OCEAN GOING TUG BOAT**



**BAYLEE BEYEL**

**Baylee Beyel O.N. 618356 (1980 Build Date) 147 Gross Ton, 77.1' (89.42' LOA-Topside) x 22.4'x10.2' Ocean Going Tug Boat**, powered by twin Cat 3412, 650HP diesel engine (1,300HP total) and Cat 6:1 starboard transmission; Twin Disc 5170, 5.95:1 port transmission, equipped with (2) 30KW generators, powered by Cat 3304 and Cummins 3.9L diesel engines, 12,500 gallon fuel capacity (4-tanks), 2,500 gallon fresh water hold, hydraulic deck winches with capstans, crew quarters with 6-rack bunk and 2-rack bunk, full galley, pilot house with Nauticast 2 A.I.S., Raytheon V820 color echo sounder, Furuno 1930 radar, Garmin GPS map 162, (2) VHF radios with haler, central air conditioning, and shore power connection. (In Progress of Updating MSD System)

**GUS J. HENRICH PUSH BOAT**



**GUS J. HENRICH**

**Gus J. Henrich O.N. 293775 (1964 Build Date) 62 Gross Ton 56'x20'x5.4' Push Boat**, powered by twin Detroit 12V71, 450HP diesel engines (900HP total) and Twin Disc 514C twin screw transmissions, equipped with (2) 20KW generators, powered by Detroit 2-71 diesel engines, manual facing winches, push knees, (2) crew quarters with 2-rack bunks, captains quarters with 2-rack bunk, head, and shower, 4,000 gallon fuel capacity, 2,000 gallon fresh water hold, pilot house with Furuno radar, depth sounder, GPS, window air conditioners throughout. (Push Knees Newly Installed) (Steering-Top Deck New-Less Than 1 year Arms, Jockey Bar) (Stern, Bow, and Starboard Bits New) (Port Engine Overhauled April 2009) *(Starboard Engine Overhauled 2005)*

**JOE SWANK PUSH BOAT**



**JOE SWANK**

**Joe Swank O.N. (Documentation In Progress) Approximately 60' LOA x 18' Push Boat**, powered by twin Detroit 8V71, 300HP diesel engines (600HP total) and Twin Disc MG514 3.5:1 gear ratio twin screw transmissions, equipped with (2) 50KW generators, powered by Detroit 3-71 diesel engines, 5,000 gallon fuel capacity, 500 gallon fresh water hold, pilot house (no navigation equipment), electric facing winches, flanking rudders, 14'x15' open room with head (not functional). (Former TVA Vessel - Swamped But Repaired - Fully Functional)

**Donna D 37'x14'6" Work Boat**, powered by Detroit 8V71 diesel engine and single screw transmission, equipped with flanking winches, work room off of engine room. In fair condition.

**(3) WHARFAGE TUGS**



**(1) OF (3) WHARFAGE TUGS**



**WHARFAGE TUG**

**85'x21'x5' Sectional Wharfage Tug Boat**, powered by twin Detroit 8V71 diesel engines and Allison Twin Disc transmission with jet drive, equipped with 1998 double drum hoist, powered by Detroit diesel engine, A-frame gantry, modular construction consisting of (3) 25'x7' sections and (30) 5'x7' section. (Double Drum Hoist Offered Separately)

**85'x21'x5' Sectional Wharfage Tug Boat**, powered by twin Detroit 8V71 diesel engines and Allison Twin Disc transmission with jet drive, equipped with modular construction consisting of (3) 25'x7' sections and (30) 5'x7' section.

**85'x21'x5' Sectional Wharfage Tug Boat**, powered by twin Detroit 8V71 diesel engines and Allison Twin Disc transmission with jet drive, equipped with modular construction consisting of (3) 25'x7' sections and (30) 5'x7' section.

**(3) UTILITY PUSH BOATS**



**(1) OF (3) UTILITY PUSH BOATS**

**#BB103 O.N. 1220880 (USN #50WB8917) (1990 Build Date) 26 Gross Ton 50'x14'6"x6' Landing Craft Utility Boat**, powered by twin Detroit 6-71 diesel engines and twin screw transmissions, equipped with 26'x14' cargo hold and bow storage hold.

**#BB101 O.N. 1220881 (USN #50WB8713) (1989 Build Date) 26 Gross Ton 50'x14'6"x6' Landing Craft Utility Boat**, powered by twin Detroit 6-71 diesel engines and twin screw transmissions, equipped with 26'x14' cargo hold and bow storage hold.

**#BB102 O.N. 1220878 (USN #50WB8803) (1989 Build Date) 26 Gross Ton 50'x14'6"x6' Landing Craft Utility Boat**, powered by twin Detroit 6-71 diesel engines and twin screw transmissions, equipped with 26'x14' cargo hold and bow storage hold.

**MOBRO 2300 STEEL FLAT DECK BARGE**



**MOBRO 2300**

**Mobro 2300 O.N. 667607 (1984 Build Date) 988 Gross Ton 190.4'x52.1'x11.2' Steel Flat Deck Barge**, equipped with fore and aft raked ends and (6) corner and mid ship cleats.

**Ringer-1 175'x74'w Derrick**, equipped with (2) spuds 28"x28"xApprox. 50' length. (One Section Hull Leaking) (Spuds Good)

**1972 28'x8' Aluminum Bridge Boat**, s/n Unknown, powered by twin GrayMarine 6 cylinder gas engine and twin screw transmission. (Not Running)

**30'x9'x1.5' Crew Boat**, s/n Unknown, powered by Detroit 6V53 diesel engine. In fair to good condition. (Zero Hours on Rebuilt Engine)

**LARK 63'x26' Amphibious Landing Craft**, powered by (4) Detroit 6-71 diesel engines and hydraulic drive, twin screw, equipped with 14'x40' cargo hold, Carco winch, and 36.00x41 tires. In fair condition.

**RECREATIONAL VESSELS AND STRADDLE LIFT**

**MISS ELLA '98 SEARAY**



**MISS ELLA**

**Miss Ella 1998 SeaRay Model 480, 48'x15' Sedan Bridge**, hull #SERP4011A898, powered by twin Detroit 6V92, 450HP twin turbo diesel engines (2000 Year Model) and Allison automatic twin screw transmissions with Morse controls, 13KW generator with Westerbeke diesel (approximately 10 hours since rebuild), bow thrusters, windlass anchor, hydraulic swim platform with inflatable dingy, LOWERHELM: Robertson AP300X auto pilot, Furuno 40 mile radar, Northstar GPC, depth sounder, RayData system, VHF radio, FLY BRIDGE: duplicate electronics, gauges, and switches, 2-bench seatings, sun pad, sink with water, full canvas bimini enclosure, SALON: outfitted with sliding glass doors from deck, entertainment center, dinette area, wrap-around seating, full galley with electric stove, microwave, refrigerator, freezer, ice maker, sink, LOWER STATE-ROOMS: (2) master staterooms-forward and port with cedar closets, (2) heads with showers, starboard stateroom with bunks and washer/dryer combo, FUEL/FRESH WATER HOLDINGS: 500 gallon fuel, 140 gallon fresh water, OPTIONS AND REPAIRS: Thru-Stern LED lighting, spare set of props, 21-knot cruise, (1) transmission replaced, NEW bottom paint and zincs (1 year ago). *In very good condition. (Low Hours)*

**Zubarleen TROJAN/MERIDIAN 48'x14' Trawler**, powered by (2) Merlin 330HP diesel engines and twin screw transmissions, equipped with flying bridge, jib crane, V-Berth, aft cabin with head, shower, main head with shower, (2) generators, pulpit with capstan winch, pilot house with Vigil RM radar, Garmin GPS 120XL, Apelco DXL6300 Loran-C, DataMarine depth finder, DataMarine Navigator, Cetec Benmar Course Keeper 210 auto pilot, McMurdo 406 EPIRB, Cruisair heat and air conditioning. (Hurricane Salvage - Came In Under Power)

**ACME MARINE HOIST CORP. Model H25, 25 Ton Straddle Lift**, s/n 41781, powered by Ford 6 cylinder gas engine and hydraulic drive, equipped with 17' straddle distance, nylon straps, 2-wheel drive, 2-wheel steer. In fair condition.

**SEAMARK III OSV TUG BOAT**



**SEAMARK III**

**Seamark III O.N. 601116 (1978 Build Date) 93 Gross Ton 100.5'x26'x4' OSV Tug Boat**, powered by twin Detroit 6V92, 700HP diesel engines (1,400HP total) and Twin Disc MG527 twin screw transmissions, equipped with (2) 50KW generators, powered by Detroit 4-71 diesel engines, forward and aft pilot house with rack (navigation equipment removed), crew quarters with 4-rack bunk, head, shower, and full galley. (OSV Classification) (Will Be ABS Certified - Work In Progress)

**SINGLETON PUSH BOAT**



**SINGLETON**

**Singleton O.N. 122042 97 Gross Ton 85'x30' (est) Push Boat**, powered by twin Detroit 12V71, 450HP diesel engines (900HP total) and Twin Disc 514C, 4.5:1 gear ratio, twin screw transmissions, equipped with (2) 50KW generators, powered by Detroit 4-71 diesel engines, Berkley 6x4 fire pump, mechanical over hydraulic flanking rudders, push knees, bow capstan, type 2 MSD system, 5,000 gallon fuel capacity, 1,000 gallon fresh water hold, swing Davit, automatic engine room venting system, pilot house with Furuno radar, Nauticast 2 AIS, Thru-Wall air conditioning, captains quarters with 2-rack bunk, head, and shower, crew quarters with 2-rack bunk and head, full galley.

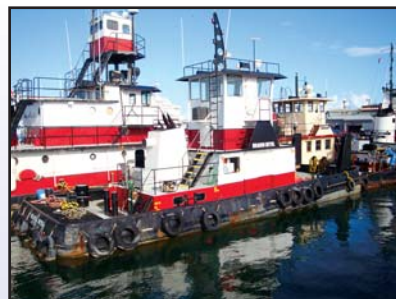
**BRITTANY BEYEL PUSH BOAT**



**BRITTANY BEYEL**

**Brittany Beyel O.N. 260969 (1950 Build Date) 99 Gross Ton 66.5'x20'x7' Push Boat**, powered by twin Detroit 12V71, 450HP diesel engines (900HP total) and 6.45:1 gear ratio twin screw transmission, equipped with (2) 20KW generators, powered by Detroit 4-71 and Cat diesel engines, (2) facing winches, flanking rudders, push knees, pilot house with captains quarters, crew quarter with 2-rack bunk and head, pilot house with Nauticast Universal AIS, Furuno 1941 radar, Garmin GPS, 2nd raised pilot house with Furuno 1830 radar, GPS, and depth finder, full galley, central air conditioning.

**BRADEN BEYEL PUSH BOAT**



**BRADEN BEYEL**

**Braden Beyel O.N. 1021558 (1994 Build Date) 49 Gross Ton 55'x18'x6' Push Boat**, powered by twin Detroit 8V71, 300HP diesel engines (600HP total) and Twin Disc MG509, 2.95:1 gear ratio, twin screw transmissions, equipped with 20KW generator, powered by Detroit 2-71 diesel engine, 5,300 gallon fuel capacity, 1,000 gallon fresh water hold, electric fire pump with remote start, (2) manual facing winches, push knees, fire alarm system, pilot house with ICOM marine radar, Garmin GPS, and rack, crew quarters with 2-rack bunk, head and shower, type 2 MSD system. *(Starboard Engine Overhauled January 2009)*