

ABSOLUTE AUCTION

COMPLETE LIQUIDATION

Snow & Ice Management Co.



THURSDAY, AUGUST 23, 2012 - 9:00AM

NEW HOLLAND
SKID LOADERS

Presto, PA (Pittsburgh Area)



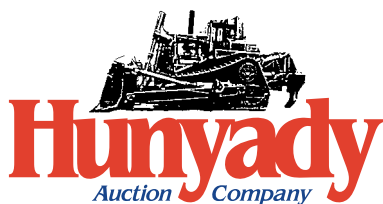
'02 KOBELCO SK35SP



'91 FORD 655C 4X4



'98 KOMATSU PC120



1440 COWPATH RD. • HATFIELD, PA 19440

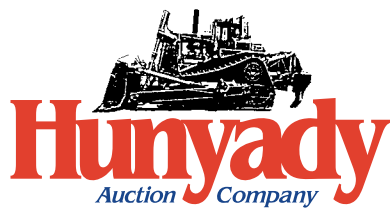
215/361-9099 • Fax: 215/361-9212

www.hunyady.com

PRE-SORTED
FIRST CLASS MAIL
US POSTAGE
PAID
HAVERTOWN, PA
PERMIT #45



ABSOLUTE AUCTION



Bid Live Online! proxibid
www.proxibid.com/hunyady

Please visit our website at
www.hunyady.com

Notice: The owners of Snow & Ice Management Company of Pennsylvania, Inc. have decided to liquidate their landscaping business and pursue other interests. All items will sell at absolute auction without minimums, reserves and no buyers premiums, with the exception of the real estate which will be sold subject to owner's confirmation.

Location: The auction will be held at Snow & Ice Management Co. location at 5102 Thoms Run Road, Presto, Pennsylvania, 15142. Please note that there is NO on-site parking. See sale day parking directions below.

Online Bidding: Live internet bidding will be provided by Proxibid. Proxibid will require a 2.5% internet provider service fee (capped at \$750) that will be charged for each item purchased online. All interested internet bidders are required to register with Proxibid 24 hours prior to the auction at www.proxibid.com/hunyady or call 877-505-7770

Sale Site Directions: FROM I-79: Exit #55 (Heidelberg/Kirwan Heights) proceed on ramp and turn left onto 50 East. Follow (0.4) miles and turn left onto Thomas Run Road. Follow (2.2) miles to sale site.

Sale Day Parking: Journey Church, 56 Prestley Road, Bridgeville, PA. Follow sale site direction except after turning on Thoms Run Road, proceed (1.2) miles and turn left on Prestley Road. Continue (.2) miles to church on right. Shuttle service will run from parking area to sale site continuously throughout the day.

Terms: Payment in full is required on sale day by cash, certified funds, or check with a bank letter of guarantee. Sample letter of guarantee: "We hereby guarantee the payment of our customer _____ written on his account up to _____ dollars for purchases at your auction sale on August 23, 2012." All guaranteed checks should be made payable to Hunyady Auction Co.

Sales Tax: The Commonwealth of Pennsylvania considers this an isolated sale and does not require the auction company to collect sales tax.

Financing: Financing is available, please contact Susan (215) 361-9099 at the auction company for details.

Inspection: Items will be available for inspection beginning one week prior to the auction from 8:00AM to 5:00PM. The site will be closed Saturday and Sunday, August 18th and 19th.

Removal: After complete payment, all sale items may be removed on sale day as long as the removal activity is not disruptive to the sale and only until 5:00 p.m. Items may also be removed Friday, August 24th and Monday thru Wednesday, August 27th thru August 29th, from 8:00 a.m. to 5:00 p.m. All items must be removed no later than Wednesday, August 29, 2012 at 5:00 p.m.

Airport Information: Commercial and Private Aviation are accepted at Pittsburgh International

Motel Information: Knights Inn: (412) 221-8110, 111 Hickory Grade Road, Bridgeville, PA 15017. Holiday Inn Express: (412) 914-2000, 3053 Washington Pike, Bridgeville, PA 15017.

Sale Site Phone (Beginning Monday, August 13th): (412) 221-3363 • Sale Site Fax: (888) 859-8958

LANDSCAPE AND SNOW REMOVAL EQUIPMENT



HYDROTERRA 1,000 Gallon HydroSeeder, Lombardini diesel, mounted on J&J 18' Tag-A-Long Trailer, 7.00x15 tires • **CUSHMAN** Jr. 18" Walk Behind Sod Cutter, Briggs & Stratton 5HP gas • **LESCO** 038720, 48" Self Propelled Walk Behind Mower, Kawasaki FC 420V gas • **HINKER** 7'6" Hydraulic Angle Snow Plow • **MEYERS** 8'6" Hydraulic Angle Poly Snow Plow • (2) **MEYERS** 8' Hydraulic Angle Poly Snow Plows • **MEYERS** 10' and (3)

SALT SPREADERS

7 1/2" Hydraulic Angle Snow Plows • (3) Electric Tailgate Spreaders • (12 Sections) 48" Galvanized Corrugated Pipe • **YORK** 8' Stone Rake • 3-Point Hitch Spreader • V-Box approx. 5 yard Salter • 10' Plow • **WESTERN** 8.5' Plow and Pump • 5HP Snow Blower • **HONDA** 48" Hydrostatic Lawn Mower (On Pallet-Needs Reassembled) • **FISHER** Polycaster 1.5 yard Electric V-Box Salter • 4 Yard Gas Powered V-Box Salter



SNOW PLOWS

REAL ESTATE

(Sold Subject to Owner's Immediate Confirmation)

14.6(+/-) Acres Zoned Residential (Parcel I.D.# 0258-H-00001-0000-00), with 1,094 ft2 Single Story Ranch Style Structure with (3) bedrooms, (1) bath, full basement and central heat, air conditioning, and (2) car garage. Pre-Engineered steel building with oil furnace and 16' ceiling.



OFFICE BUILDING



SHOP BUILDING

HYDRAULIC EXCAVATORS AND ATTACHMENTS



2002 KOBELCO Model SK35SP-2E Mini Excavator, s/n PX10-08637, powered by Yanmar 3 cylinder diesel engine and hydrostatic drive, equipped with 52" dipper stick, 24" WB, digging bucket with side cutters, swing boom, 66" push blade, hydraulic plumbing, ROPS canopy, light package, and 14"x87" rubber crawlers. In good condition with good undercarriage.

'02 KOBELCO SK35SP-2E

1998 KOMATSU Model PC120-6 Hydraulic Excavator, s/n 60927, powered by 6 cylinder diesel engine and hydrostatic drive, equipped with 10' dipper stick, WB quick coupler, hydraulic plumbing, stiff arm bracket, light package, and 11'6" crawlers, 23.5" TBG pads. In fair to good condition with fair to good undercarriage.



'98 KOMATSU PC120-6

LABOUNTY 5 Tine Grapple (Komatsu PC120) • Hydraulic Plate Tamper (Komatsu PC120) • 24" and 36" Buckets (Komatsu PC120)

LABOUNTY GRAPPLE



CRAWLER LOADER



2000 JOHN DEERE Model 555G Series IV Crawler Loader, s/n T0555GA893130, powered by John Deere 4 cylinder diesel engine and powershift transmission, equipped with GP loader bucket with teeth, (4) piece rear counterweight with tow bar, 16" DBG pads, ROPS canopy, and light package. In good condition with fair undercarriage. (Bad Right Steering Clutch)

JOHN DEERE 555G

BACKHOE, TRACTOR, AND COMPACTOR



1991 FORD Model 655C, 4x4 Tractor Loader Extend-A-Hoe, s/n A416715, powered by 4 cylinder diesel engine and shuttle transmission, equipped with GP loader bucket with bolt on cutting edge, 24" digging bucket, enclosed ROPS cab, light package, and 12x16.5 front and 16.9x28 rear tires. In fair to good condition with fair to good tires.

FORD 655C 4X4 EXTENDAHOE

FORD Model 1720 Utility Tractor, s/n unknown, powered by 3 cylinder diesel engine and shuttle transmission, equipped with Model 7108 loader attachment, 3 point hitch, PTO, tow bar, roll bar, and 25x8.50-14 front and 13.6x16 rear tires. In fair condition with fair to good tires. (Clutch Problems)

DYNAPAC Model CA25 Vibratory Compactor, s/n unknown, powered by Cat 3208 diesel engine and hydrostatic drive, equipped with 84" smooth drum, drum drive, drum cleaner, ROPS canopy, and 23.1x26 tires. In fair condition with good tires.



DYNAPAC CA25

SKID STEER LOADERS AND ATTACHMENTS



2003 NEW HOLLAND Model LS170 Skid Steer Loader, s/n LMU015653, powered by Kubota 4 cylinder diesel engine and hydrostatic drive, equipped with 66" loader bucket, auxiliary hydraulics, rear pocket book counterweights, light package, and 10x16.5 tires. In good condition with poor to fair tires.

'03 NEW HOLLAND LS170

2001 NEW HOLLAND Model LS170 Skid Steer Loader, s/n 171935, powered by Kubota 4 cylinder diesel engine and hydrostatic drive, equipped with 66" loader bucket with teeth, Hi-Flow auxiliary hydraulics, light package, and 12x16.5 tires. In good condition with fair tires.



'01 NEW HOLLAND LS 170 HI-FLOW



2000 NEW HOLLAND Model LS170 Skid Steer Loader, s/n 169610, powered by 4 cylinder diesel engine and hydrostatic drive. In good condition with good tires.

'00 NEW HOLLAND LS 170

1999 NEW HOLLAND Model LS180 Skid Steer Loader, s/n 181765, powered by 4 cylinder diesel engine and 2 speed hydrostatic drive, equipped with 77" loader bucket, auxiliary hydraulics, light package, and 12x16.5 tires. In good condition with (2) good and (2) poor tires.



'99 NEW HOLLAND LS 180

1990 NEW HOLLAND Model L785 Skid Steer Loader, s/n 772921, powered by Ford 3 cylinder diesel engine and hydrostatic drive, equipped with 72" loader bucket, auxiliary hydraulics, light package, and 12x16.5 tires. In fair to good condition with fair to good tires.

ATTACHMENTS: CATERPILLAR BP15B Hydraulic Broom • **ROCK HOUND 60B Landscape Rake** • **BOBCAT Sweeper 60 Broom Attachment** • (2) Hydraulic Preparator Attachments • **BRADCO C1825 Hydraulic Auger Attachment**, with 12" and 30" augers • **CARETREE Hydraulic Tree Ball Carrier** • (2 Sets) 14" Steel Grouser Tracks



CAT BP15B BROOM



ROCK HOUND 60B

CABLE PLOWS AND AIR COMPRESSORS

DITCH WITCH Model V250 Vibratory Walk Behind Cable Plow, s/n 163587, powered by Onan 2 cylinder gas engine, equipped with Roto Witch III, hydraulic PTO, and 16x6.50 tires. In fair condition with fair tires. (Not Running)

DITCH WITCH Model 100SX Walk Behind Cable Plow, s/n 4J0199, powered by Honda 11HP gas engine.



INGERSOLL RAND 185CFM

INGERSOLL-RAND Model 185 Air Compressor, s/n 24975UIF327, powered by John Deere 4 cylinder diesel engine. In fair condition.

GRIMMER SCHMIDT 175CFM Portable Air Compressor, s/n T10R5438974, powered by 4 cylinder diesel compressor engine, equipped with B78x13 tires. In fair to poor condition with fair to poor tires.

VAN, DUMP AND FLATBED TRUCKS



'01 FREIGHTLINER FL60

2001 FREIGHTLINER Model FL 60 Single Axle Van Body Truck, powered by Cat 3126 diesel engine and 6 speed transmission, equipped with 22' van body with lift gate, 25,550# GVWR and 11R22.5 tires. In good condition with good tires.

1986 FORD Model F-600 Single Axle Dump Truck, powered by V-8 gas engine and 4 speed transmission, equipped with 11' steel dump body, 20,200# GVWR, and 8.25x20 tires. In fair condition with fair to good tires.

1986 FORD Model F-700 Single Axle Dump Truck, powered by 8.2L diesel engine and automatic transmission, equipped with 10' steel dump body, hydraulic salt spreader, knuckle boom crane pedestal and controls, plow frame, and 11R22.5 tires. In fair condition with good tires.

1998 GMC Model 3500HD SL Single Axle Flatbed Dump Truck, powered by 6.5L turbo diesel engine and automatic transmission, equipped with 13'6" steel flatbed, 42" steel solid stake sides, Blizzard plow frame and controls, dual rear wheels, and 225/70R19.5 tires. In fair to good condition with fair to good tires.

'98 GMC 3500 FLATBED DUMP



PICKUP, UTILITY, AND STAKE BODY TRUCKS



'01 FORD F250XL 4X4

2001 FORD Model F-250XL Super Duty 4x4 Quad Cab Pickup Truck, powered by Powerstroke diesel engine and automatic transmission, equipped with 8' bed, liner, tow package, power windows, locks and mirrors, 8'6" Western Unimount snow plow, and 265/75R16 tires. In good condition with good tires.

1998 CHEVROLET Model 3500, 4x4 Crew Cab Utility Truck, powered by 6.5L turbo diesel engine and automatic transmission, equipped with 9' open utility body, tow package with electric, dual rear wheels, and 215/85R16 tires. In good condition with good tires.

1995 FORD Model F-350XL Utility Truck, powered by V-8 gas engine and automatic transmission, equipped with 12' open utility body with material rack, dual fuel tanks, and 265/75R16 tires. In fair to poor condition with fair tires. (R Title) (Body Damage)

1995 FORD Model F-250XL, 4x4 Pickup Truck, powered by V-8 gas engine and automatic transmission, equipped with 8' bed (missing tailgate), power windows, locks, and mirrors, dual fuel tanks, cruise control, A/C, and 235/85R16 tires. In fair to poor condition with fair tires.

1995 FORD Model F-250XL Extended Cab 4x4 Pickup Truck, powered by 5.8L gas engine and 5 speed transmission, equipped with 8' bed with liner, dual fuel tanks, power windows and locks, cruise control, A/C, and 235/85R16 tires. In fair condition with good tires.

1989 CHEVROLET Model 2500 Cheyenne Pickup Truck, powered by 5.0L gas engine and automatic transmission, equipped with 8' bed, A/C, and 225/75R16 tires. In fair condition with fair tires.

1994 FORD Model F-350 Single Axle Stake Body Truck, powered by 5.8L gas engine and automatic transmission, equipped with 12' stake body, side tool boxes, and 265/75R16 tires. In good condition with good tires.



'98 CHEVY 3500 4X4

TRAILERS

1987 EAGER BEAVER 20 Ton Tag Trailer, equipped with 17'x8' level deck, 5' beaver, 5' ramps, and 8.25-15 tires. In fair condition with fair tires.

1989 HURST 6 Ton Tri-Axle Tag-A-Long Trailer, equipped with 16' wood deck, 4' beaver tail, 7' ramps, and 8x14.5 tires. In fair condition with fair tires.

BOBCAT 6'x12' Trailer, equipped with 5' ramps, and 8-14 tires. In fair to poor condition.

22' Single Axle Office/Storage Trailer, equipped with swing rear door, man door, and 7x14 tires. In fair condition with fair tires.

CONTRACTORS AND SURVEY TOOLS



SWEEPSTER BROOMS

HPH46411H, 46" Power Trowel, 11HP gas • **RA-ZORBACK J45H**, 36" Power Trowel, Honda 5.5HP gas • **WHITEMAN CA44H**, 24" Power Trowel, Honda 4HP gas • Electric Floor Grinder • **EDCO DS16-11R** Walk Behind Concrete Saw, Wisconsin gas, 16" blade capacity • Walk Behind Concrete Saw, gas, 16" blade capacity • **MASTER Gas**

MORRISON PB16 Power Buggy, Honda gas • (3) **SWEEPSTER 36"** Walk Behind Brooms, Honda 5.5HP gas • **WHITEMAN B-4-8H**, 48" Power Trowel, Honda 9HP gas • **ALLAN 446**, 48" Power Trowel, Honda 11HP gas, equipped with cart. • **DYNAPAC BG47HUS**, 48" Power Trowel, Honda 8HP gas • **WHITEMAN 48"** Power Trowel, Honda 8HP gas • **WHITEMAN**



POWER TROWELS

Powered Foot Compactor • **TITAN 3"** Portable Trash Pump • 2" and 3" Gas Powered Pumps (PARTS) • Portable Generator, Vanguard 14HP gas (Runs-No Electric) • **WACKER VPG160K** Plate Compactor, Kohler gas • **MIKASA** Plate Compactor, Honda 5.5HP gas • **WACKER WP1550** Plate Compactor, Honda 5.5HP gas • **HOMELITE 2"** Gas Powered Pump • **HOMELITE XL** Gas Powered Chain Saw • **TRAFCON** Portable Arrowboard, diesel, B78x14



SURVEY EQUIPMENT

tires • Approx. (8) Jack Hammers and Chipping Hammers • Jack Hammer and Chipping Hammer Bits • Approx. 5' Long Jack Hammer Bits • Quantity of Lasers and Other Instruments: Pentax TH60E Theodolite, Berger Level, Berger Trans ST-8, Nikon NL220C

SHOP TOOLS, FORMS, CONSTRUCTION MATERIALS AND MISCELLANEOUS



CONCRETE FORMS

and 3" Suction Hoses • Mixed Truck and Skid Steer Tires • Quantity of Rolls of Fabric and Geo Grid • 4" Concrete Forms • Large Quantity of Rebar Covers • Arrow Sign (Inoperative) • (2) Approx. 500-1,000 Gallon Fuel Tanks • Pallets of 1'-5" Electric Pipe, Fittings, and Sweep Elbows • Approx. (5) 15'x120' Greenhouses • Large Quantity of 4" Pipe Sewage Cast Iron Covers, manhole lids • (3) Crates of Waterline Material, Fittings, etc. • Cast Iron (Waterline Material) • **THERMAL DYNAMICS PCHM100XL** Plasma Cutter • Band Saw • Table Saw • Drill Holder Press • (2) Bench Grinders • (3) Bench Vises • Chop Saw • (4) Furnace Heaters • (7) Greenhouse Furnace Heaters • Large Quantity of Drip Irrigation for Greenhouses • 2" Gas Powered Pump • Approx. (10-12) Sonotubes (Mixed Sizes) • Gas Powered Paint Sprayer • (1) Pallet of Fire Hose • Quantity of 2" Electric Water Pumps • **YAMAHA** Blaster Quad • (2) **PEPSI** Vending Machines • Snack Vending Machine • Coffee Vending Machine • Quantity of Drills and Impacts • Approx. (3) Pallets of Equipment Filters • Contractor Tools and Hand Tools • Large Propane Heater • Test Balls for Pipe Installations • Large Quantity of Handheld Sprayers • Miscellaneous Tools and Supplies • Approx. (8-9) Boxes of 4" Pipe Spacers and Separates • Set of Running Boards • Set of Lockers • Wood Panels for Concrete • Several Caulk Guns for Two Tube Epoxy • (2) Heavy Duty Lifting Cables • Large Chain Keeper • Electric Cord with 4 Plug Box • Pallet of Slings • Miscellaneous Corrugated Pipe and Fittings