



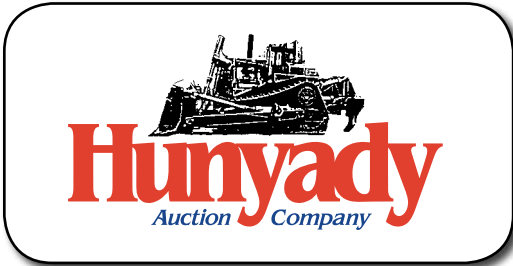
(6) SCISSORS LIFTS



(2) GMC PICKUPS



PAINT SPRAYERS



1440 COWPATH RD. • HATFIELD, PA 19440  
215/361-9099 • Fax: 215/361-9212  
www.hunyady.com

PRE-SORTED  
FIRST CLASS MAIL  
US POSTAGE  
**PAID**  
HAVERTOWN, PA  
PERMIT #45



**ABSOLUTE AUCTION**  
**COMPLETE LIQUIDATION**

**T III Enterprises, Inc.**  
**Commercial Painting**  
**Contractor**

**Doylestown,**  
**Pennsylvania**

**WEDNESDAY, JUNE 22, 2016 - 9:00AM**

'86 FORD F-700  
AND '95 IR 825CFM

# ABSOLUTE AUCTION • NEVER A BUYER'S PREMIUM!

**NOTICE:** After many successful years in the commercial and industrial painting business the owners of T III Enterprises, Inc. have decided liquidate all equipment assets and pursue other interests. All equipment is owned by T III Enterprises and will sell to the highest bidder regardless of price and without minimums, reserves, or Buyer's Premium!

**Location:** The auction will be held at the T III facility located at 602 Airport Blvd., Doylestown, PA 18902

**Sale Site Directions:** FROM PA TURNPIKE (Interstate 276) Exit #343, merge onto PA Route 611 North and proceed (12.2) miles and exit onto PA Route 313 East/Swamp Road. Continue approximately (0.4) miles and turn left onto North Easton Road. Follow North Easton Road (0.6) miles and turn right onto Cross Keys Drive. Follow (0.2) miles to dead end and turn right onto Airport Boulevard. Proceed to sale site on left.

**Terms:** Payment in full is required on sale day by cash, certified funds, or check with a bank letter of guarantee. Sample letter of guarantee: "We hereby guarantee the payment of our customer \_\_\_\_\_ written on his account up to \_\_\_\_\_ dollars for purchases at your auction sale on June 22, 2016" All guaranteed checks should be made payable to Hunyady Auction Co.

**Sales Tax:** Since this contractor is selling items not normally sold in the course of his business, the Commonwealth of Pennsylvania considers this an isolated sale and does not require the auction company to collect sales tax.

**Financing:** Financing is available, please contact Susan (215) 361-9099 at the auction company for details.

**Inspection:** Items will be available for inspection beginning one week prior to the auction from 8:00AM to 4:00PM, or sale day morning beginning at 7:00AM. The site will be closed Saturday and Sunday, June 18th and 19th

**Removal:** After complete payment, all sale items may be removed on sale day as long as the removal activity is not disruptive to the sale and only until 5:00PM. Items may also be removed Thursday and Friday, June 23rd and 24th, from 8:00AM to 4:00PM. All items must be removed no later than Friday, June 24, 2016 at 4:00PM

**Sale Site Phone: (267) 446-3808 (Beginning June 20, 2016) • Sale Site Fax: (888) 859-8958**

**Additional information available at our website: [www.hunyady.com](http://www.hunyady.com)**

## UTILITY AND PICKUP TRUCKS

**1986 FORD F-700 Single Axle Utility Truck**, Detroit 8.2L diesel engine and automatic, 11' enclosed utility body, 24,500# GVWR, air brakes, tow package, and 10R22.5 tires. In fair condition with good tires.

**1997 FORD E-350 Utility Van**, Powerstroke diesel engine and automatic, Reading 10'4" enclosed utility body, dual rear wheels, tow package, air conditioning, and 225/75R16 tires. In fair to good condition with fair tires.

**1997 GMC 3500 Sierra 4x4 Pickup Truck**, 6.5L diesel engine and automatic, 8' bed, ladder rack, tow package, air conditioning, and 265/75R16 tires. In fair to good condition with fair tires.

**1999 GMC 2500 SLE Pickup Truck**, Vortec 5.7L gas engine and automatic, 8' bed, ladder rack, tow package, power windows and locks, air conditioning, and 245/75R16 tires. In fair to good condition with fair tires.

## SCISSORS LIFTS AND FORKLIFT

**GENIE GS-2632, 26' Electric Scissors Lift**, 24V DC and hydrostatic, 25"x86" retracted work platform, 500# capacity, on-board charger, and non-marking tires. In good condition with good tires.

**CONDOR 2633, 20' Electric Scissors Lift**, s/n X935-4105, 24V DC and hydrostatic, 23"x90" retracted work platform, 750# capacity, and on-board charger. In fair to good condition with fair to good tires.

**CONDOR 2633, 20' Electric Scissors Lift**, s/n X93596233, 24V DC and hydrostatic, 23"x90" retracted work platform, 750# capacity, and on-board charger. In fair to good condition with fair to good tires.

**JLG 2032 E2, 20' Electric Scissors Lift**, 24V DC and hydrostatic, 26"x91" retracted work platform, on-board charger, and non-marking tires. In good condition with good tires.

**SNORKEL SL20, 20' Electric Scissors Lift**, 24V DC and hydrostatic, 24"x90" retracted work platform, 850# capacity, on-board charger, and non-marking tires. In fair to good condition with fair to good tires.

**SKY JACK SJIII-3219, 19' Electric Scissors Lift**, 24V DC and hydrostatic, 24"x64" retracted work platform, 550# capacity, on-board charger, and non-marking tires. In fair to good condition with fair to good tires.

**CLARK 2,300# Solid Tired Forklift**, LP gas engine, 151" 3-stage mast and 36" forks. In fair condition with fair tires.

## AIR COMPRESSORS AND WELDER

**1995 INGERSOLL RAND HP825WCU, 825CFM Portable Air Compressor**, s/n 252386ULF716, Cummins LTA10 diesel engine, 150PSI and 8.75-16.5 tires. In fair to good condition with good tires.

**SULLIVAN 750CFM Portable Air Compressor**, Cummins 6 cylinder diesel engine, sound suppression and 225/75R16 tires. In fair to good condition with fair to good tires.

**1997 INGERSOLL RAND P375WJD, 375CFM Portable Air Compressor**, s/n 273857UCH414, John Deere diesel engine. In good condition with fair to good tires.  
**MULTIQUIP TLW-300SS, 300 Amp/10.5KW Portable Welder/Generator**, s/n 5449786, Kubota 18.8HP diesel engine, mounted on 2002 single axle trailer. In good condition with good tires.



MQ TLW-300SS

## WATER BLASTER, ARROWBOARD, AND TAG-A-LONG TRAILER

**NATIONAL LIQUID BLASTING 20,000PSI Portable Water Blaster**, Detroit diesel engine, mounted on tandem axle trailer with 205/75D14 tires. In fair condition with good tires.

**SIGNAL Portable Arrowboard**, Lombardini diesel engine, 78-13 tires. In good condition with fair tires.

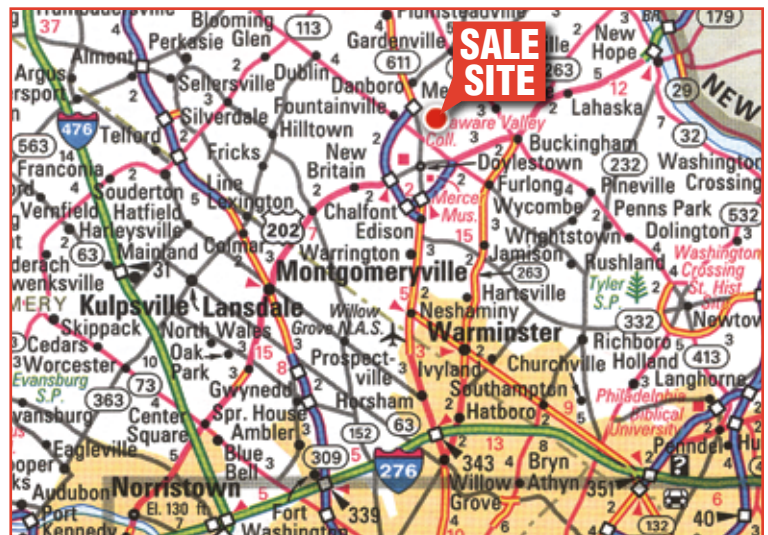
**Tandem Axle Tag-A-Long Trailer**, 6'x16' level steel deck, 4' ramps, and 225/75R15 tires. In fair condition with good tires.

## RELATED TOOLS AND OFFICE EQUIPMENT

(12) GRACO and TITAN Electric Airless Paint Sprayers • (4) GRACO Gas Powered Sprayers • GRACO Textured Coating Sprayers • HVLP and Double Diaphragm Paint Pots • (2) Sandblast Pots • (2) EMGLO Gas Powered Air Compressors • (2) Electric Air Compressors • (3) Generators • (4) Gas Powered Pressure Washers • Gang Boxes • (17+/-) 6'-12' Step Ladders • (30+/-) 16'-40' Extension Ladders • (15+/-) Scaffolding Sets, with castors • (20+/-) 7'-30' Aluminum Pic Boards • Portable Space Heaters • 500 Gallon Fuel Tank, with pump • 1,500 Poly Water Tank • Pallet Jacks and Platform Carts • Traffic Control Barricades and Cones • Truck Accessories: 8' Pickup Bid (GMC 3/4 Ton, 4x4) • 11'5" and 8' Material Racks • Toolboxes • RICOH Aficio MP2851 Copier/Fax/Scanner • CANON IPF605 Image Prograph 24" Printer • Phone System, with (5) desk phones • Drafting Table • Receptionist Desk • Desks, Chairs, File Cabinets



LADDERS AND PIC BOARDS



**AUCTION LOCATION:**

**602 Airport Blvd., Doylestown, PA 18902**