

ABSOLUTE AUCTION

COMPLETE LIQUIDATION

SITE TECH, Inc.



WEDNESDAY, AUGUST 17, 2011 - 9:00AM
Clarks Summit, Pennsylvania
(Scranton Area)



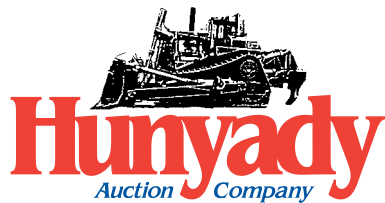
'06 JOHN DEERE 544J



JMH AND TRAILSTAR 32'



'05 AND '03 TEREX 27 TON



1440 COWPATH RD. • HATFIELD, PA 19440
215/361-9099 • Fax: 215/361-9212
www.hunyady.com

PRE-SORTED
FIRST CLASS MAIL
US POSTAGE
PAID
HAVERTOWN, PA
PERMIT #45



NEVER A BUYER'S PREMIUM!

HYDRAULIC EXCAVATORS AND ATTACHMENTS



'06 HITACHI ZX330LC
(GRAPPLE SOLD SEPARATELY)

Hitachi ZX330LC Attachments: GEITH 5-Tine Heavy Duty Grapple • CF 30" Digging Bucket

2006 HITACHI ZX330LC Hydraulic Excavator, s/n 35528, Isuzu diesel engine and hydraulic drive, 10'6" dipper stick, 60" digging bucket, JRB hydraulic quick coupler, enclosed cab with heat and A/C, 16'3" crawlers, and 31.5" TBG pads. In good to very good condition with good undercarriage. (2,087 Hours) (Purchased Used With Less Than 100 Hours)



GEITH HEAVY DUTY 5-TINE

2004 HITACHI ZX200 Hydraulic Excavator, s/n AUJ-007556, Isuzu diesel engine and hydraulic drive, 10' dipper stick, 48" digging bucket, JRB hydraulic quick coupler, 2-way hi/low auxiliary hydraulics, enclosed cab with heat and A/C, 13'8" crawlers, and 31.5" TBG pads. In good condition with good undercarriage. (2,958 Hours) (Purchased Used With Less Than 100 Hours)



'04 HITACHI ZX200

Hitachi ZX200 Attachments: 2003 ROCKRAM 775ERS Hydraulic Demo Hammer, s/n 577498. In good condition. • **UNUSED TJA GP20 5-Tine Grapple** • **FLECO Mechanical Thumb**. In good condition. • **JRB 60" Clean-Up Tilt Bucket**, with hydraulic wrist. In good condition. • **2006 H&H 30" Heavy Duty Digging Bucket**. In good condition.

2005 INGERSOLL-RAND ZX-125 Midi Hydraulic Excavator, s/n 120542A97, Deutz liquid cooled diesel engine and hydraulic drive, 7'9" dipper stick, swing boom, zero tail swing, 24" digging bucket, Geith hydraulic quick coupler, 8'6" backfill blade, enclosed cab with heat and A/C, 10'11" crawlers, and 24" TBG pads. In very good condition with very good undercarriage. (437 Hours) (Purchased Used With Less Than 100 Hours)



'05 INGERSOLL-RAND ZX-125

Ingersoll-Rand ZX-125 Attachments: **UNUSED ATLAS COPCO HC920 Hydraulic Plate Compactor** • **UNUSED GEN-TEC Hydraulic Thumb Attachment** • **CP 50" Digging Bucket**. In good condition.



'09 ROCKRAM
778RTK (UNUSED)

Hydraulic Excavators Attachments: **UNUSED 2009 ROCKRAM 778RTK Hydraulic Demo Hammer**, s/n 540201187 (Fits 40,000-60,000# Class Excavator) • **GEITH 30" Severe Duty Digging Bucket** (Fits Volvo EC330LC)

RUBBER TIRED LOADER, TRACTOR LOADER EXTEND-A-HOE, AND ATTACHMENTS



'06 JOHN DEERE 544J

Case 580 Super M Attachments: 1996 INDECO MES621 Hydraulic Demo Hammer. In good condition. • **ALLIED Hydraulic Plate Compactor** • 12" Digging Bucket. In good condition. • Used 12-16.5 Tire

2006 JOHN DEERE 544J Rubber Tired Loader, s/n 606223, John Deere diesel engine and electronic powershift trans., JRB 3.0 cu. yd. general purpose loader bucket, with bolt-on cutting edge, JRB hydraulic quick coupler, auxiliary hydraulics, ride control, enclosed ROPS cab with heat and A/C, self-cleaning reversible fan, locking differentials, and 20.5R25 tires. In very good condition with good to very good tires. (1,044 Hours) (Purchased Used With Approx. 400 Hours)

John Deere 544J Attachments: **JRB 2.25 Cu. Yd. Hydraulic Side Dump Bucket**. In very good condition. • **JRB 48" 19,000# Fork Attachment**. In very good condition.

2003 CASE 580 Super M, 4x4 Tractor Loader Extend-A-Hoe, s/n JJG0374419, diesel engine and shuttle trans., general purpose loader bucket with bolt-on cutting edge, 24" digging bucket, rear hi/low auxiliary hydraulics, front auxiliary hydraulics, ride control, controls and plumbed for hydraulic 4-in-1 loader bucket, enclosed ROPS cab with heat, and 12-16.5 front and 19.5L-24 rear tires. In good condition with good tires. (01,358 Hours) (Purchased New)

'03 CASE 580 SUPER M 4X4 EXTEND-A-HOE



CRAWLER TRACTORS AND ATTACHMENTS



2004 KOMATSU D39EX-21A Crawler Tractor, s/n 1503, Komatsu diesel engine and powershift trans., 6-way straight blade, multi-shank ripper, drawbar, ROPS canopy with sweeps, under seat heat, and 18" SBG pads. In very good condition with very good undercarriage. (1,066 Hours) (Purchased New) **UNUSED Soft Cab** (Fits D39EX-21A)

1989 KOMATSU D68E-1 Crawler Tractor, s/n 01359, Komatsu diesel engine and powershift trans., straight blade with tilt, drawbar, ROPS canopy, and 24" SBG pads. In good condition with good undercarriage.

Crawler Tractor Attachments: **CRAFTWELD Blade Guards** with certification

'04 KOMATSU D39EX-21A

'89 KOMATSU D68E-1



ABSOLUTE AUCTION

ARTICULATED END DUMPS



'05 TEREX TA27, 27 TON

2003 TEREX TA27 Generation 7, 27 Ton 6x6 End Dump, s/n A8501074, Cummins diesel engine and ZF semi-automatic trans., retarder, A/C, and 23.5R25 tires. In good condition with good tires. (4,285 Hours)



'03 TEREX TA27, 27 TON



2003 TEREX TA27 Generation 7, 27 Ton 6x6 End Dump, s/n A8501082, Cummins diesel engine and ZF semi-automatic trans., retarder, A/C, and 23.5R25 tires. In good condition with good tires. (4,332 Hours)

'03 TEREX TA27, 27 TON

SCISSORS LIFT, TRENCHER, AND PORTABLE AIR COMPRESSOR



UPRIGHT LX41

1996 CASE 360, 4x4 Rubber Tired Trencher, s/n JAF0198278, Deutz air cooled diesel engine and 2-speed hydrostatic trans., 5'x5' trencher bar, 4-way backfill blade, and 26x12.00-12 tires. In good condition with good tires.

1996 UPRIGHT LX41, 4x4 Scissor Lift, s/n 1167, Kubota WG750 dual fuel gas/LP gas engine and hydrostatic trans., 6'x12' platform with 3' extension and 10-16.5 tires. In good condition with good tires.



'96 CASE 360 4X4



2001 INGERSOLL-RAND XP185WJD, 185 CFM Portable Air Compressor, s/n 321168UDL222, VIN# 4FVCBBA91U321168, John Deere 4.5L diesel engine, 125/250 PSI low/high pressure selector and 215/75R15 tires. In good condition with good tires. (862 Hours)

'01 INGERSOLL-RAND 185CFM

VIBRATORY COMPACTOR AND MOTOR GRADER



1998 BOMAG BW177D-3 Vibratory Compactor, s/n 101580100297, Cummins diesel engine and hydrostatic trans., 66" smooth drum, drum drive, 28,000# vibration on drum, ROPS canopy, and 14.9-24 tires. In good condition with good tires. (1,229 Hours) (Purchased Used In 2001 With Approx. 600 Hours)

1975 JOHN DEERE 770 Articulated Motor Grader, s/n 003868T, John Deere diesel engine and powershift trans., 13' hydraulic moldboard, front scarifier, enclosed cab with heat, and 14.00-24 tires. In good condition with good tires.

'98 BOMAG BW177D-3

JOHN DEERE 770



TRUCK TRACTORS AND LOWBOY TRAILER (Truck Tractor and Lowboy Will Be Offered as Individual Items and as an Entirety. The Flip-Up 4th Axle Will Be Sold Separately)



'03 MACK GRANITE CV713 AND '05 TALBERT 55 TON (OFFERED SEPARATELY AND AS ENTIRETY)

2003 MACK Granite CV713 Tri-Axle Truck Tractor, Mack E7-460, 460HP diesel engine and Maxitorque ES18, 18 speed trans., 46,000# rears, 20,000# steerable airlift 3rd axle, 18,000# front axle, 2-line wetline with dump valve, 2-position engine brake, air ride suspension, 217" wheelbase, differential and inter-axle lock, tarp controls, aluminum headache rack, wheels and fuel tanks, full stainless steel fenders, work lights, full gauge package, heated and power mirrors, A/C, cruise control, power windows and door locks, and 385/65R22.5 front, 315/80R22.5 lift, and 11R24.5 rear tires. In good to very good condition with good tires. (152,524 Miles) (7,684 Hours) (Recently Installed New Intercooler & New Batteries) (Combo Tare Weight is 45,500#)

2005 TALBERT T(4)DW-55SA-HRG-1-T1-RC(EC3/1), 55 Ton Tri-Axle Drop Side Lowboy Trailer, VIN# 40FSK664051024281, 8'6"x26' deck, boom well, non ground bearing hydraulic detachable gooseneck, airlift 3rd axle, 4th axle prepped, air ride suspension, 2-position king pin setting (96" or 102" swing clearance), emergency light kit, chain dogs on beam and outside of trailer, outriggers, 132,920# GVWR, and 275/70R22.5 tires. In good to very good condition with good and very good tires.

2005 TALBERT Pin-On 4th Axle, air ride suspension and 26,000# capacity. In good condition with fair tires.

1999 FREIGHTLINER FL120 Tandem Axle Truck Tractor, Cummins 370-430, 425HP diesel engine and Eaton Fuller 10 speed trans., 40,000# rears, 12,000# front axle, Jacobs 2-stage engine brake, 2-line wetline with dump valve, air ride suspension, 172" wheelbase, airslide 5th wheel, tarp controls, headache rack with work lights, A/C, and 11R22.5 tires. In good condition with good tires. (315,816 Miles) (Recently Installed New Clutch, Rear Main Seal, Brakes On Front Axle & Batteries)

1992 (Glider) MACK RW700GK Superliner Tandem Axle Truck Tractor, Cummins NTC-300, 300HP diesel engine and Fuller 13 speed trans., 44,000# rears, 14,000# front axle, Jacobs 2-stage engine brake, 2-line wetline with dump valve, Mack camelback suspension, 206" wheelbase, stationary 5th wheel, tarp controls, Protech headache rack with work lights, aluminum front wheels, and 11R24.5 tires. In good condition with good to very good tires. (132,716 Miles) (Recently Installed New Steer Tires, Front Shocks & Batteries)



'99 FREIGHTLINER FL120



'92 MACK RW700K

NO MINIMUMS • NO RESERVES

DUMP TRAILERS AND HYDRAULIC TAIL TRAILER

2006 JMH M3260DDABH, 32' Tandem Axle Half Round Steel Dump Trailer, 2-way air operated tailgate with coal chute, Hardox AR450 3/8" steel tub, Roll-Rite electric tarp, air ride suspension, 70,000# GVWR, steel Budd wheel (outside hub piloted), front and rear access ladders, fenders, spare tire, and 11R24.5 tires. In very good condition with very good tires. (Purchased New) (Current PA Inspection)



(2) '06 JMH, '05 TRAILSTAR, AND '98 JMH 32'



2006 JMH J3260DDABH, 32' Tandem Axle Half Round Steel Dump Trailer, 2-way air operated tailgate with coal chute, Hardox AR450 5/16" steel tub, Roll-Rite electric tarp, air ride suspension, 70,000# GVWR, steel Budd wheels (outside hub piloted), front and rear access ladders, fenders, spare tire, and 11R24.5 tires. In very good condition with very good tires. (Purchased New) (Current PA Inspection)

2005 TRAILSTAR Rockstar 32' Tandem Axle Steel Dump Trailer, 34' frame, 2-way air operated tailgate, Hardox AR450 5/16" steel tube, Cramaro electric tarp, spring suspension, 60" sides and gate, 80,000# GVWR, aluminum Budd wheels (outside hub piloted), front and rear access ladders, and 11R24.5 tires. In very good condition with very good tires. (Purchased Used In 2006) (Current PA Inspection)

1998 JMH J3260DDABH, 32' Tandem Axle Half Round Steel Dump Trailer, 2-way air operated tailgate, Hardox AR400 5/16" steel tub, Roll-Rite electric tarp, air ride suspension, 70,000# GVWR, steel Budd wheels (Dayton style), front access ladder, fenders, spare tire, and 285/70R24.5 tires. In good condition with very good tires. (Recently Installed New Brakes & Cam Bushings)

2004 TOWMASTER T-50RGHT, 25 Ton Tandem Axle Hydraulic Tail Trailer, 8'6"x10' upper deck, 20' fixed deck, 8'4" folding deck, 48" tail, heavy duty pull-out ramps, Ramsey 800, 25,000# hydraulic winch, spring suspension, chain dogs, under deck tool box, 68,380# GVWR, and 215/75R17.5 tires. In good condition with good tires.



'04 TOWMASTER 25 TON HYDRAULIC TAIL

FLATBED/DUMP AND UTILITY TRUCKS



'01 FORD F-350XL

2001 FORD F-350XL Super Duty Flatbed/Dump Body, Triton 5.4L, V-8 gas engine and automatic trans., Iroquois 9' flatbed/dump body, Fisher Minn Mount 9' snow plow, dual rear wheels, tow package, and 235/85R16 tires. In good condition with very good tires. (079,384 Miles) (Wired For Fisher Spreader) (Recently Installed New Electric Motor & Valves For Dump Hoist and OEM Transfer Case)

1996 FORD F-350XLT, 4x4 Utility Truck, V-8 gas engine and automatic trans., Reading 9' utility body, Fisher 8'6" snow plow, cab protector, dual fuel tanks, tow package, A/C, cruise control, power windows and door locks, and 235/85R16 tires. In good condition with good tires. (67,923 Miles) (Installed Snow Plow Winter Of 2010/2011)



'96 FORD F-350XLT 4X4

TRI-AXLE DUMP TRUCKS



'05 MACK GRANITE CV713

1987 FREIGHTLINER FL112 Tri-Axle Dump Truck, Cat 3406B, 350HP diesel engine and Eaton Fuller 8LL, 10 speed trans., Bibeau 17'6" steel dump body, 2-way tailgate, Roll-Rite electric tarp, 44,000# rears, 18,000# front axle, 18,000# airlift 3rd axle, Jacobs 2-stage engine brake, tow package with air, 425/65R22.5 front and 11R24.5 tires. In good condition with good tires. (292,110 Miles) (Body Was Installed New In 2006)

2005 MACK Granite CV713 Tri-Axle Dump Truck, Mack AI-400, 400HP diesel engine and Maxitorque T310M/MLR, 10 speed trans. with multi-speed rear, Ox 16" steel dump body, electric tarp, 44,000# rears, 18,000# front axle, 18,000# airlift 3rd axle, 2-position engine brake, tow package with air, A/C, cruise control, 385/65R22.5 front, and 11R22.5 rear tires. In very good condition with good to very good tires. (43,114 Miles) (2,159 Hours)



'87 FREIGHTLINER FL112

TAG-A-LONG TRAILERS



'01 KEIFER 15 TON

chain dogs, 30,000# GVWR, 7,800# empty weight, and 215/75R17.5 tires. In good condition with good tires. (Purchased New)

2001 KEIFER 15 Ton Tandem Axle Tag-A-Long Trailer, 8'6"x24' level deck, 5' beavertail, 5' ramps, air brakes,

2004 KAUFMAN 7 Ton Tandem Axle Tag-A-Long Trailer, 8'x24' level deck, 5' beavertail, 5' ramps, frame mounted tool box, electric brakes, 14,000# GVWR, 3,500# empty weight, and 235/85R16 tires. In good condition with good tires. (Purchased New)



'04 KAUFMAN 7 TON



2003 THOMAS Single Axle Tag-A-Long Landscape Trailer, 6'6"x10' level deck, 6'6" mesh ramp, electric brakes, 5,000# GVWR, 1,700# empty weight, and 225/75R15 tires. In good condition with good tires. (Purchased New)

'03 THOMAS SINGLE AXLE

SNOW REMOVAL EQUIPMENT



FISHER ProCaster 8' Stainless Steel Salt Spreader, s/n 04052930002994709-1, Tecumseh 10HP gas engine, light package. In good condition. (Purchased New)
FISHER 8'6" V-Snow Plow, s/n 37655. In good condition.

Shopmade 11' Snow Pusher Attachment (Bucket Lip Mount)
(2) TORO CCR1000, 20", 3HP Single Stage Snow Blowers
TORO Powerlite 16", 3.25HP Single Stage Snow Blower

PORTABLE SCREENING PLANT AND RADIAL STACKER



01 NORDBERG SW351

2006 POWERSCREEN MX85, 30"x60' Folding Radial Stacking Conveyor, s/n 6103222, Cummins B3.3, 85HP diesel engine, hydraulic raise and lower, 5th wheel, pintle tow, and 10R17.5 tires. In very good condition with very good tires. (296 Hours)

06 POWERSCREEN MX85

2001 NORDBERG SW351 Portable Screening Plant, s/n R2210561, Deutz liquid cooled diesel engine, 7'x13'6" feed hopper with hydraulic grizzly, 42"x30' feed conveyor, 5'x10' 2-deck screen, with 2" and 3/4" screens, (2) 23"x25' side discharge conveyors, 39"x30' rear discharge conveyor, grid controls (no remote), 5th wheel pin, front pull-out drawbar, and 385/65R22.5 tires. In very good condition with good tires. (738 Hours) (Less Than 100 Hours On Screen Deck Balancing) (Plumbed For Topsoil Shredder) (Additional 1" Screens To Be Sold With Machine)



PORTABLE CHIPPERS AND STRAW BLOWER



05 MORBARK 2400XL AND 99 GRAVELY PRO CHIP

2005 MORBARK 2400XL Hurricane, 18" Portable Drum Chipper, s/n 4S8SZ191X5W050905, Cat diesel engine, auto feed, 360° chute, hydraulic trailer jack, work lights, electric brakes, and 235/75R17.5 tires. In good condition with good tires. (692 Hours)

1999 GRAVELY Pro Chip 12110, 12" Portable Disc Chipper, s/n 000155, Perkins 110HP turbo charged diesel engine, rotating chute, and 9.50-16.5 tires. In good condition with good tires. (449 Hours) (Recently Installed New Knives & Bolts) (Original Knives Re-sharpened – Will Sell With Machine)



FINN B50

1986 FINN B50 Portable Straw Blower, s/n BN-1275, Wisconsin 4 cylinder gas engine, rotating chute and 175/80D13 tires. In good condition with fair tires. (471 Hours)

FIREWOOD PROCESSOR AND WOOD STACKER



07 BUILT-RITE 30SCP



2007 BUILT-RITE 30SCP Firewood Processor, s/n 0730SCP409, Kubota V1505 diesel engine, 9' live deck, 16' feed conveyor, 30" chain saw bar (cuts up to 24.5" diameter logs), 2/4/6-way splitter, rated at (3) cords per hour. In very good condition with good to very good tires. (121 Hours) (Purchased New)
HUDSON FOREST PRODUCTS C24B, 18"x24' Wood Stacker, s/n C24B064, Briggs & Stratton 3.5HP gas engine, with 75/80D13 tires. (Purchased New)
HUDSON FOREST PRODUCTS C24B

SKID STEER LOADER AND ATTACHMENTS

2003 BOBCAT T300 Crawler Skid Steer Loader, s/n 521912672, Kubota diesel engine and hydrostatic trans., 78" general purpose loader bucket, high flow auxiliary hydraulics, Power Bob-Tach coupler, 7 and 14 pin electrical connector, enclosed cab with heat and A/C, and 18" rubber tracks. In good condition with good undercarriage. (1,300 Hours) (Purchased New)

Skid Steer Attachments: **TWOSE Q-400R1 Side Boom Flail Mower,** s/n 680500, with 44" cutter head • **LOWE 1200XLH Hydraulic Auger Attachment,** s/n 20642523, with 14" and 6" augers • **THOMAS U-1031, 73" Hydraulic Grapple Bucket** • **STEINSAMMLER B30HD, 82" Rock Fork** • **NEW HOLLAND 48" Fork Attachment** • **THOMAS 48" Fork Attachment** • **THOMAS B209/U-1956, 78" Light Material/Snow Bucket** • (2) 78" General Purpose Loader Buckets



03 BOBCAT T300 (FLAIL MOWER SOLD SEPARATELY)



Notice: Following (10+) successful years in heavy site work, railroad and power company right of ways, land development, and stream bank restoration industries, the owners of Site Tech, Inc., Mr. Alan Keisling and Mr. Mark Boettcher, have decided to cease operations and liquidate all assets in order to pursue other interests. All equipment is owned by Site Tech, Inc., and will sell at absolute auction without minimums, reserves, or buyer's premium. **This is a very clean spread of late model, well spec'd equipment. Please plan to attend!**

Location: The auction will be held at Site Tech's shop and office facility on Valley View Drive, in Newtown Township, Clarks Summit, PA 18411.

GPS Navigation: 10010 Valley View Drive, Clarks Summit, PA 18411

Terms: Payment in full is required on sale day by cash, certified funds, or check with a bank letter of guarantee. Sample letter of guarantee: "We hereby guarantee the payment of our customer _____ written on his account up to _____ dollars for purchases at your auction sale on August 17, 2011." All guaranteed checks should be made payable to Hunyady Auction Co.

Sales Tax: Since this contractor is selling items not normally sold in the course of his business, the Commonwealth of Pennsylvania considers this an isolated sale and does not require the auction company to collect sales tax.

Financing: Financing is available on select items, please contact Susan (215) 361-9099 at the auction company for details.

Inspection: Items will be available for inspection beginning one week prior to the auction from 8:00AM to 4:00PM. The site will be closed Saturday and Sunday, August 13th and 14th.

Removal: After complete payment, all sale items may be removed on sale day as long as the removal activity is not disruptive to the sale and only until 5:00 p.m. Items may also be removed Thursday and Friday, August 18th and 19th and Monday thru Wednesday, August 22nd to 24th, from 8:00 a.m. to 5:00 p.m. All items must be removed no later than Wednesday, August 24, 2011 at 5:00 p.m.

Sale Site Directions: From Interstate 81 Exit 194 and PA Turnpike Northeast Extension (I-476) Exit 131 – Follow Signs and proceed to Route 6 West. Follow Route 6 West (1.5) miles to traffic light at Winola Road and turn left. Proceed on Winola Road (2) miles to 2nd Y-intersection and veer left onto Newton Ransom Boulevard. Proceed (0.4) miles and turn left onto Forest Acres Drive. Proceed (0.9) miles and turn right onto Valley View Drive. Proceed (0.1) mile to driveway on right.

Airport Information: The area is serviced commercially and privately through the Wilkes-Barre/Scranton International Airport. Private Aviation is also accepted at Seamans Field Airport (9N3) in Factoryville, PA (570) 945-5125 (12 miles from sale site) or Skyhaven Airport (76N) in Tunkhannock, PA (570) 836-4800 (17 miles from sale site)

Motel Information: Ramada Inn, 820 Northern Blvd, Clarks Summit, PA 18411 (570) 586-2730 • Hampton Inn, 890 Northern Blvd, Clarks Summit, PA 18411 (570) 586-1515 • Comfort Inn, 811 Northern Blvd, Clarks Summit, PA 18411 (570) 586-9100

Sale Site Phone (Beginning Monday, Aug. 8th): (267) 446-3808 • Sale Site Fax: (888) 859-8958

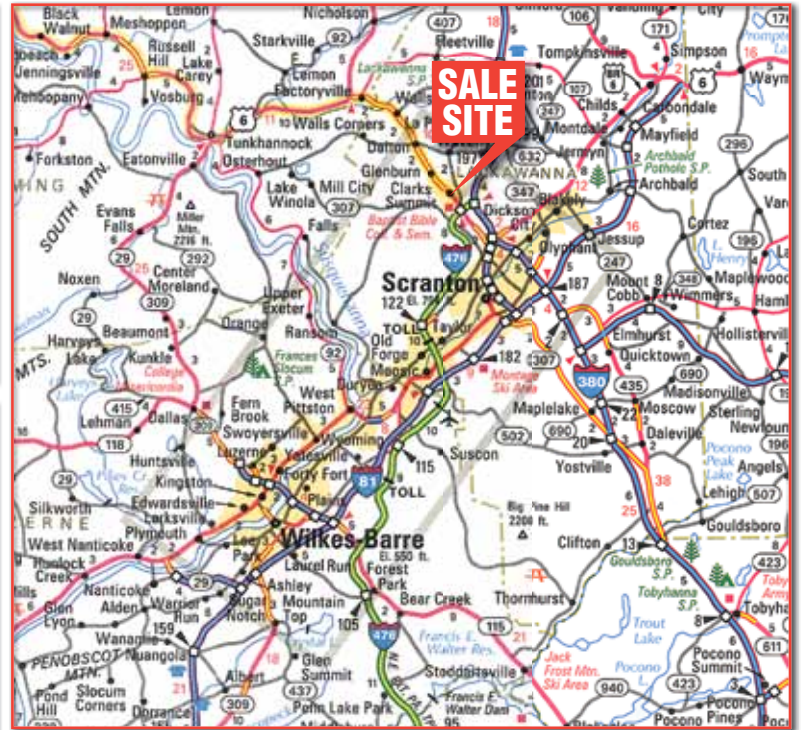
CONTRACTORS TOOLS

WEBER Gas Powered Plate Compactor • **WACKER** BS500 Foot Compactor • **TARGET** Concrete Chain Saw • **WACKER & SPEEDICUT** Demo Saws • **WACKER** Demo Saw Cart with water • **HUSQVARNA** 455 Chain Saw • **HUSQVARNA** 460 Chain Saw • **(3) POULAN** Chain Saws • **ECHO** 10" Gas Powered Brush Cutter • **UNUSED LEADING** 6.800 Watt Diesel Powered Generator • **COLEMAN** 6,000 Watt Gas Powered Generator • **COLEMAN** 2,000 Watt Gas Powered Generator • **(2) 3" Centrifugal Pumps** • Pneumatic Paving Breaker • **12 Volt Conical Spreader** • **(40) BILJAX** 5x5' Scaffolding (Some Unused) • **(20) Pic Boards** • **REDDY** 15,000 BTU Portable Space Heater • **ATLAS** Barrier Lifter • Wire Rope Slings • **DIRE** Iron Pipe Snapper • Wheel Barrow



SHOP TOOLS

MTM 2403 Portable Steam Cleaner, Honda 6.5HP gas engine, 2400 PSI, 2.6 gpm, diesel burner • **LINCOLN** Ranger 8, 225 Amp Welder, Onan 16HP gas engine • **LINCOLN** LN-25 Wire Feed Unit • **LINCOLN** 225 Amp Buzz Box Welder • **(2) Oxygen/Acetylene Torch Sets**, with carts • **MILWAUKEE** Magnetic Drill • Trans. Jack • Wheel Dolly • **GRACO** Pneumatic Luber • Sandblast Pot • Barrel Lifter • Hand Truck/Cart



MISCELLANEOUS

CAT 3406B, 315HP Running Take-Out Diesel Engine with air starter • 500 Gallon Double Wall Skid Mounted Fuel Tank, with 12 volt electric pump • 275 Gallon Fuel Tank with 12 volt electric pump • 80 Gallon Aluminum Fuel Tank with 12 volt electric pump • Aluminum Hydraulic Saddle Tank • Steel Hydraulic Tank • Single Axle Water Buffalo • Single Axle 5th Wheel Dolly, with 11.00R22 tires (No Air Lines) • **(15) 52"x12'6"** Concrete Barriers • **(5 Rolls)** Geogrid • **(20 Sections)** 6" Plastic Conduit • Assorted PVC Pipe • **(100 Pieces)** 10' Rebar • **(20 Sections)** Silt Fence • **(10 Pallets)** Vera Lock & Mesa Block • **(7 Rolls)** Safety Fence • (Approx. 100 Rolls) Caution & Danger Tape • Assorted Safety Supplies • **PEPSI** Vending Machine • Assorted Truck Parts