



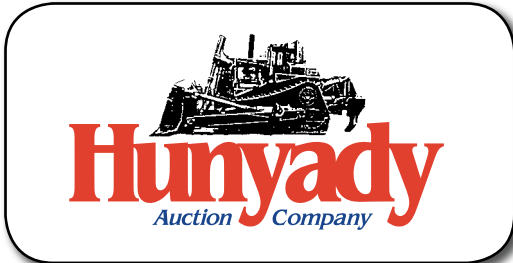
'07 MACK CTP713



'09 BOBCAT S175



'08 MACK CXU613



1440 COWPATH RD. • HATFIELD, PA 19440
215/361-9099 • Fax: 215/361-9212
www.hunyady.com

PRE-SORTED
FIRST CLASS MAIL
US POSTAGE
PAID
HAVERTOWN, PA
PERMIT #45



ABSOLUTE AUCTION

SURPLUS EQUIPMENT

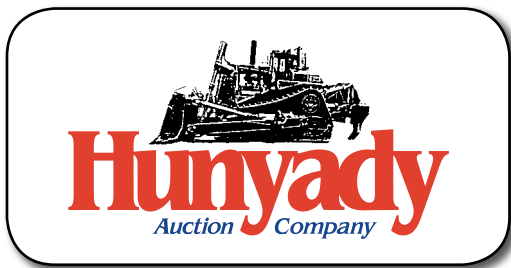
**Pittsburgh,
Pennsylvania
(Hazelwood Area)**

**Pittsburgh
Recycling Services**
**WEDNESDAY,
AUGUST 27, 2014
9:00 AM**



'00 CAT 320BMH

ABSOLUTE AUCTION



Pittsburgh Recycling Services

Bid Live Online! proxibid.
www.proxibid.com/hunyady



Notice: The assets of Pittsburgh Recycling Services have recently been sold to new owners. In an effort to realign the business model, the new owners have decided to operate the plant but sell all material handling equipment and rolling stock. All equipment is owned by GGMJS dba Pittsburgh Recycling Services and will positively sell to the highest bidder at absolute auction, without minimums, reserves or buyers premium!

Location: The auction will be held at Pittsburgh Recycling's shop and yard facility located at 50 Vespuccius Street, Pittsburgh, PA 15207

Sale Site Directions: FROM INTERSTATE 376/US ROUTE 22: Exit #74 (Squirrel Hill-Homestead) Proceed (0.7) miles toward Homestead. Turn right onto Hazelwood Avenue. Continue (1.3) miles and turn left onto 2nd Avenue. Proceed (0.7) miles to Vespuccius Street and turn right. Continue across railroad tracks and turn right into Pittsburgh Recycling.

Online Bidding: Live internet bidding will be provided by Proxibid. Proxibid will require a 2.5% internet provider service fee (capped at \$750) that will be charged for each item purchased online. All interested internet bidders are required to register with Proxibid 24 hours prior to the auction at www.proxibid.com/hunyady or call 877-505-7770

Terms: Payment in full is required on sale day by cash, certified funds, or check with a bank letter of guarantee. Sample letter of guarantee: "We hereby guarantee the payment of our customer _____ written on his account up to _____ dollars for purchases at your auction sale on August 27, 2014" All guaranteed checks should be made payable to Hunyady Auction Co.

Sales Tax: Since this contractor is selling items not normally sold in the course of his business, the Commonwealth of Pennsylvania considers this an isolated sale and does not require the auction company to collect sales tax.

Financing: Financing is available, please contact Susan (215) 361-9099 at the auction company for details.

Inspection: Items will be available for inspection beginning one week prior to the auction from 8:00AM to 4:00PM, or sale day morning from 7:00AM until 9:00AM The site will be closed Saturday and Sunday, August 23rd and 24th

Removal: After complete payment, all sale items may be removed on sale day as long as the removal activity is not disruptive to the sale and only until 5:00PM. Items may also be removed Thursday and Friday, August 28th and 29th and Tuesday and Wednesday, September 2nd and 3rd 8:00AM to 4:00PM. All items must be removed no later than Wednesday, September 3rd 4:00PM. THE SITE WILL BE CLOSED MONDAY, SEPTEMBER 1ST FOR LABOR DAY.

Airport Information: Commercial and Private aircraft are accepted at the Pittsburgh International Airport.

Motel Information: Courtyard Pittsburgh-West/Homestead Water front, 401 West Waterfront Dr., Homestead, PA 15120, (412) 462-7301 • Hampton Inn & Suites Pittsburgh Waterfront-Homestead, 301 West Waterfront Drive, Homestead, PA 15120, (412) 462-4226 • Sheraton-Station Square 300 West Station Square Drive, Pittsburgh, PA 15219, (412) 261-2000

Sale Site Phone: (267) 446-3808 • Sale Site Fax: (888) 859-8958

STEP DECK TRAILERS

#FB4803 1998 TRAILMOBILE 48' Spread Axle Step Deck Trailer, equipped with 32' lower deck, 11' upper deck, 10'5" axle spread, 4' center mounted shop made forklift carrier, air ride suspension, 65,000# GVWR, and 255/70R22.5 tires. In fair to good condition with good tires.



'96 FONTAINE 48'

#FB4804 1996 FONTAINE 48' Spread Axle Step Deck Trailer, equipped with 33' lower deck, 10' upper deck, 10' axle spread, 5' center mounted forklift carrier, air ride suspension, 70,227# GVWR, and 255/70R22.5 tires. In good condition with good tires.

FLATBED TRAILERS

#FB4801 1994 FONTAINE 48' Spread Axle Flatbed Trailer, equipped with 10'2" axle spread, rear shop made forklift carrier, air ride suspension, aluminum deck, ratchet straps, and 285/75R24.5 tires. In fair to good condition with fair tires.



'94 FONTAINE 48'

#FB4504 1994 FONTAINE 45' Spread Axle Flatbed Trailer, equipped with 10'2" axle spacing, air ride suspension, aluminum deck, rear shop made forklift carrier, ratchet straps, 79,903# GVWR, and 11R22.5 tires. In good condition with fair tires.

#FB4503 1974 TRANSCRAFT Model THX-45, 45' Tandem Axle Flatbed Trailer, equipped with spring suspension, sliding tandems, rear shop made forklift carrier, ratchet straps, 70,000 GVWR, and 11R22.5 tires. In good condition with fair tires.

#FB4501 1968 SCHIEN 45' Tandem Axle Flatbed Trailer, equipped with rear shop made forklift carrier, spring suspension, sliding tandems, 54,000# GVWR, ratchet straps, and 11R22.5 tires. In fair condition with fair tires.



VAN TRAILERS



(2) 1991 MONON Model MAX-15-ST-48W, 48' Aluminum Van Trailers, equipped with swing rear doors, spring suspension, 68,000# GVWR, and 11R22.5 tires. In good condition with good tires.

ROLL-OFF TRUCKS

#112 2007 MACK Model CTP713

Granite Tri-Axle Roll-Off Truck, powered by Mack MP7, 370HP diesel engine and Maxitorque T310, 10 speed transmission, equipped with 2008 Wastequip model O/R, 75,000# 22' roll-off body, s/n 95060, electric tarp, 44,000# rears and 18,000# front axle, camelback suspension, 2-stage engine brake, air lift 3rd axle, aluminum front wheels, air conditioning, cruise control, 62,000# GVWR, 385/65R22.5 front, 255/70R22.5 lift, and 11R22.5 rear tires. In good condition with good tires.



'07 MACK CTP713

#110 2000 MACK Model RD688S

Tandem Axle Roll-Off Truck, powered by Mack E7-350, 350HP diesel engine and Fuller 8LL, 10 speed transmission, equipped with 2000 McClain model MMH60T-OR, 22' 60,000# roll-off body, s/n 602022 with electric tarp, 44,000# rears and 18,000# front axle, (4:17) ratio, camelback suspension, 2-stage engine brake, heated mirrors, air conditioning, cruise control, 385/65R22.5 front and 11R22.5 rear tires. In good condition with good tires.



'00 MACK RD688S

#108 1995 MACK Model DM690S

Tri-Axle Roll-Off Truck, powered by Mack EM7-300, 300HP diesel engine and Mack T2070B, 7 speed transmission, equipped with 1995 Galbreath model UT-10-174, 60,000# roll-off body, s/n H9997, 44,000# rears and 20,000# front axle, (5:32) ratio, camelback suspension, Jacobs 2-stage engine brake, airlift 3rd axle, 315/80R22.5 front, 10.00R22.5 lift, and 11R22.5 rear tires. In good condition with fair to good tires.



'95 MACK DM690S

MATERIAL HANDLER AND HYDRAULIC EXCAVATOR



'00 CAT 320BMH

#MH02 2000 CATERPILLAR Model 320B LL/320B MH Material Handling Hydraulic Excavator, s/n 6LS00360, powered by Cat 3066 diesel engine and hydraulic drive, equipped with 19' dipper stick, dual function auxiliary hydraulics, Pemberton 7' 9-tine rotating grapple, 21' boom (40' overall reach), elevated cab with heat and air conditioning, and 24" TBG pads. In good condition with fair to good undercarriage.

#BH12 2001 CATERPILLAR Model 325BL Hydraulic Excavator

s/n 2JR03089, powered by Cat 3116 diesel engine and hydraulic drive, equipped with 10'6" dipper stick, auxiliary hydraulics, enclosed ROPS cab with heat and air conditioning, and 31.5" TBG pads. In good condition with good to very good undercarriage. (Grapple Sold Separately)



'01 CAT 325BL
(GRAPPLE SOLD SEPARATELY)



PEMBERTON 5-TINE

Pemberton Model CAT322-4-EGRY00 5-tine Grapple, s/n 736-4-0800

ROLL-OFF CONTAINERS AND COMPACTOR BOXES

(4) 40 YD Roll-Offs – (3) In good condition; (6) 40-42 YD Compactors Boxes. In good condition • (43) 30 YD Roll-Offs – (14) In good condition • (1) 30 YD Compactor Box. In good condition • (11) 20 YD Roll-Offs – (10) In good condition • (12) 15 YD Roll-Offs – (9) In good condition • (1) 10 YD Roll-Off. In good condition. (40+) Rear Load Containers, with lids (Some With Castors) • Approximately (400+/-) 95 Gallon Toters (Some Are NEW With Keys)



40 CUBIC YARD



40 CUBIC YARD COMPACTOR



30 CUBIC YARD



20 CUBIC YARD



15 CUBIC YARD



REAR LOAD



95 GALLON

TRASH TRUCK



#621 1991 MACK Model MR688S Cab Over Tandem Axle Trash Truck, powered by Mack 6 cylinder diesel engine and automatic transmission, equipped with 44,000# rears and 18,000# front axle, Leach model 2R11, 25 yard rear packer, s/n 2R114430, walking beam suspension, air conditioning, 62,000# GVWR, and 11R22.5 tires. In good condition with fair to good tires.

'91 MACK MR688S

VAN BODY TRUCK



#528 2005 INTERNATIONAL Model 4300 Single Axle Van Body Truck, powered by Int'l DT466 diesel engine and automatic transmission, equipped with Morgan 20'6" aluminum van body with roll-up rear door, lift gate, air ride suspension, air brakes, 216" wheelbase, 33,560# GVWR, and 11R22.5 tires. In good condition with good to very good tires.

'05 IHC 4300

SKID STEER LOADER AND FORKLIFTS



'09 BOBCAT S175

#LT206 2010 TOYOTA Model 8FDU25, 4,850# Solid Tired Forklift, s/n 30264, powered by Toyota 1DZ-III diesel engine and shuttle transmission, equipped with 189" 3-stage mast, 36" forks, ROPS canopy, 7.00-12/5.00 front and 6.00-9/4.00 rear tires. In good condition with good tires.



'10 TOYOTA 4,850#



#LT205 2008 TOYOTA Model 8FDU15, 4,800# Solid Tired Forklift, s/n 10089, powered by Toyota 1DZ-2 diesel engine and shuttle transmission, equipped with 189" 3-stage mast, 32" forks, ROPS canopy, 6.50-10/5.00 front and 5.00-8 rear tires. In good condition with good tires.

'08 TOYOTA 4,800#

#LT185 2007 TOYOTA Model 8FDU15, 4,800# Solid Tired Forklift, s/n 10044, powered by Toyota 1DZ-II diesel engine and shuttle transmission, equipped with 3-stage mast, 6.50-10/5.00 front and 5.00-8 rear tires. In fair to good condition with good to very good tires. (No Forks)



(2) TOYOTA 4,800#

#LT164 2005 TOYOTA Model 7FDU15, Type D, 4,800# Solid Tired Forklift, s/n 60157, powered by Toyota 1DZ-II diesel engine and shuttle transmission, equipped with 189" 3-stage mast, 6.50-10/5.00 front and 5.00-9 rear tires. In good condition with good tires. (Needs Injectors) (48" Fold-Up Forks-Inspected Without Forks)

WALKING FLOOR TRAILERS



'04 MAC 45'

#WF50001 1999 J&J Model ALF-04, 50' Tandem Axle Aluminum Hydraulic Walking Floor Trailer, equipped with 105" sides, manual side tarp, swing rear door, 80,000 GVWR, and mixed tires. In fair to good condition with good tires. (Floor In Poor Condition)



'99 J&J 50'

#233/WF45002 2004 MAC 45' Tandem Axle Aluminum Walking Floor Trailer, equipped with manual side roll tarp, 106" sides, swing rear gate, air ride suspension, aluminum wheels, 80,000# GVWR, and 11R24.5 tires. In good condition with good tires. (Floor In Poor Condition)

TRUCK TRACTORS



'08 MACK CXU613

#748 2005 INTERNATIONAL Model 8600 Tandem Axle Truck Tractor, powered by Cummins ISM 6 cylinder diesel engine and Eaton Fuller 10 speed transmission, equipped with 40,000# rears and 12,000# front axle, air ride suspension, air slide 5th wheel, heated mirrors, air conditioning, cruise control, 161" wheelbase, 52,000# GVWR, and 11R22.5 tires. In good condition with good tires.

#778 2008 MACK Model CXU613 Pinnacle Tandem Axle Truck Tractor, powered by Mack MP8-445C, 445HP diesel engine and Eaton Fuller 10 speed transmission, equipped with 40,000# rears and 12,000# front axle, air ride suspension, fixed 5th wheel, 2-stage engine brake, aluminum front wheels, heated mirrors, air conditioning, cruise control, 176" wheelbase, 52,000# GVWR, and 11R22.5 tires. In good condition with good tires.



'05 IHC 8600



'00 MACK CH613

#738 2000 VOLVO Model WNL64T610 Tandem Axle Sleeper Truck Tractor, powered by Detroit Series 60, 430HP-500HP diesel engine and Eaton Fuller 10 speed transmission, equipped with 38,000# rears and 12,349# front axle, integral 48" walk-in sleeper, air ride suspension, 2-stage engine brake, air slide 5th wheel, aluminum wheels, power passenger window and locks, air conditioning, cruise control, 216" wheelbase, 50,349# GVWR, and 11R24.5 tires. In good condition with good tires. (No A/C Belt)

#686 2000 MACK Model CH613 Maxi Cruise Tandem Axle Truck Tractor, powered by Mack E7-355/380 diesel engine and Fuller 10 speed transmission, equipped with 38,000# rears and 12,000# front axle, wetline, air ride suspension, air slide 5th wheel, 2-stage engine brake, heated mirrors, air conditioning, cruise control, 176" wheelbase, 50,000# GVWR, and 11R22.5 tires. In good condition with very good tires.



'00 VOLVO

#770 1997 FREIGHTLINER Tandem Axle Sleeper Truck Tractor, powered by Cat C-12 diesel engine and Eaton Fuller 9 speed transmission, equipped with 40,000# rears and 12,000# front axle, 36" sleeper, wetline, 2-stage engine brake, air ride suspension, air slide 5th wheel, aluminum headache rack, aluminum front wheels, air conditioning, cruise control, 208" wheelbase, 52,000# GVWR, and 11R22.5 tires. In good condition with good tires.

DUMP TRAILERS



'95 COBRA 40'

1984 EAST 40' Tandem Axle Aluminum Frameless Dump Trailer, equipped with manual tarp, air ride suspension, 80,000# GVWR, and 11R24.5 tires. In good condition with fair tires.

1995 COBRA 40' Tandem Axle Aluminum Frameless Dump Trailer, equipped with manual tarp, 2-way tailgate with single chute, air ride suspension, aluminum wheels, 80,000# GVWR, and 11R24.5 tires. In good condition with fair tires.



'84 EAST 40'