

ABSOLUTE AUCTION

COMPLETE LIQUIDATION



'09 KENWORTH T800
HOOK LIFT

**Sewickley, PA
(Pittsburgh Area)**

THURSDAY, OCTOBER 11, 2012 - 9:00AM



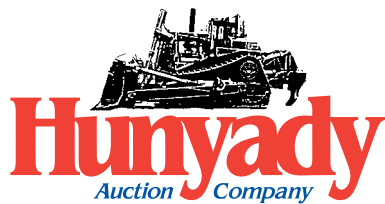
KOBELCO EXCAVATORS



FREIGHTLINER DUMP TRUCKS



TAKEUCHI SKID STEERS

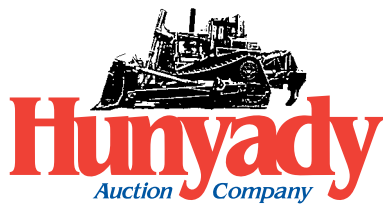


1440 COWPATH RD. • HATFIELD, PA 19440
215/361-9099 • Fax: 215/361-9212
www.hunyady.com

PRE-SORTED
FIRST CLASS MAIL
US POSTAGE
PAID
HAVERTOWN, PA
PERMIT #45



NEVER A BUYER'S PREMIUM!



Bid Live Online! proxibid.
www.proxibid.com/hunyady

Please visit our website at
www.hunyady.com

Notice: After (20+) successful years in the excavation business Mr. Rob Penfield has decided to pursue other interests and completely liquidate. Everything in the auction will positively sell to the highest bidder regardless of price, without reserve and without buyer's premium!

Auctioneer's Special Note: The majority of the major equipment has been purchased new and very well maintained. Please plan to attend!

Location: The auction will be held at 930 Toms Run Road, Sewickley, Pennsylvania 15143. Please note that there is NO on-site parking. See sale day parking directions below.

Sale Day Parking: The remote parking area is at Christ Church at Grove Farm, 249 Duff Road, Sewickley, PA 15143. Shuttle bus service to and from the auction site will be provided throughout the day. FROM INTERSTATE 79 SOUTHBOUND Exit #68 (Mt. Nebo Road). After exiting turn left at stop sign to Mt. Nebo Road. Proceed (0.5) miles and turn right onto Duff Road. Proceed (0.1) mile to Church on left. FROM INTERSTATE 79 NORTHBOUND Exit #68 (Mt. Nebo Road) After exiting turn right at traffic light and proceed (0.4) miles and turn right onto Duff Road. Continue (0.1) miles to Church on left.

Sale Site Directions: FROM INTERSTATE 79 NORTHBOUND: Exit #66 (PA Route 65 Emsworth/Sewickley) After exiting stay right at first "Y" towards Route 65 then follow signs towards Route 65 South (Emsworth). After merging onto Route 65 South stay in left lane and proceed (0.5) miles and turn left onto Toms Run Road. Proceed on Toms Run Road (0.7) miles to sale site on right. **FROM INTERSTATE 79 SOUTHBOUND:** Exit #66 to Route 65 (Emsworth/Sewickley) After exiting turn left at stop sign (follow signs to Route 65) proceed (0.7) miles to second stop sign and turn left onto Route 65 South, while merging onto 65 South stay in left lane. Proceed (0.5) miles and turn left onto Toms Run Road. Continue on Toms Run Road (0.7) miles to sale site on right.

Online Bidding: Live internet bidding will be provided by Proxibid. Proxibid will require a 2.5% internet provider service fee (capped at \$750) that will be charged for each item purchased online. All interested internet bidders are required to register with Proxibid 24 hours prior to the auction at www.proxibid.com/hunyady or call 877-505-7770

Terms: Payment in full is required on sale day by cash, certified funds, or check with a bank letter of guarantee. Sample letter of guarantee: "We hereby guarantee the payment of our customer _____ written on his account up to _____ dollars for purchases at your auction sale on October 11, 2012." All guaranteed checks should be made payable to Hunyady Auction Co.

Sales Tax: Since this contractor is selling items not normally sold in the course of his business, the Commonwealth of Pennsylvania considers this an isolated sale and does not require the auction company to collect sales tax.

Financing: Financing is available, please contact Susan (215) 361-9099 at the auction company for details.

Inspection: Items will be available for inspection beginning one week prior to the auction from 8:00AM to 5:00PM. The site will be closed Saturday and Sunday, October 6th and 7th.

Removal: After complete payment, all sale items may be removed on sale day as long as the removal activity is not disruptive to the sale and only until 5:00PM. Items may also be removed Friday, October 12th, and Monday thru Thursday, October 15th thru October 18th, from 8:00AM to 5:00PM. All items must be removed no later than Thursday, October 18th, 2012 at 5:00PM.

Airport Information: Commercial and Private aviation are serviced thru Pittsburgh International Airport. Rental cars are available.

Motel Information: Fairfield Inn Neville Island 412-264-4722, 5850 Grand Avenue, Pittsburgh, PA 15225 • Hampton Inn Pittsburgh-McKnight Rd., 412-939-3200, 4575 McKnight Road, Pittsburgh, PA 15237

Sale Site Phone (Beginning Monday 10/1/12): (412) 766-0607 • Sale Site Fax: (888) 859-8958

SHOP TOOLS



SERVICE SKID



HOTSY STEAM CLEANER

Shopmade Service Skid with 115 gallon fuel tank with electric pump, Emglo gas powered air compressor/generator, Foreman toolbox, and parts basket • **CLARK** 2,000# Solid Tired Forklift, 4 cyl. gas, shuttle transmission, 132" 2-stage mast with 40" forks • **HOTSY** Portable Electric Steam Cleaner, oil fired burner • **LANDA** Portable Pressure Washer, Honda 13HP gas • **HUSKY** 1800 PSI Electric Pressure Washer • **CRAFTSMAN** Rolling Tool Chest with tools • **HILTI** TE76 Hammer Drill • **BOSCH** 11236V5 Hammer Drill • **BENNER** DC20XH Electric Rebar Cutter • **NAPA** 1" Impact Wrench • **IR** 1/2" Impact Wrench • (21 Piece) 3/4" Socket Set • **LINCOLN** 225 Amp Electric Welder • Torch Set with cart • **SCHUMACHER** Battery Charger • **DEWALT** 18 Volt Cordless Tool Set • **MILWAUKEE** 14" Electric Chop Saw • **MILWAUKEE** Reciprocating Saw • **SKIL** Jig Saw • 7-1/4" Circular Saw • **MANSFIELD** 18 Volt Cordless Dual Drill • 1/2" Electric Drill • **DEWALT** 3/8" Electric Drill • **DEWALT** Drywall Screw Gun • **DEWALT** Screw Shooter • (2) Angle Grinders • (3)

Hydraulic Floor Jacks • (3) Bottle Jacks • (4) Screw Jacks • (5) Jack Stands • 24" Bolt Cutter • Propane Heater • (2) Air Pigs • **RIDGID** 16 Gallon, 6.5HP Shop Vac • (2) Manual Lubers • Drum Cart • Assorted Lubricants • (2) 12"x16" Aluminum Pic Boards • Aluminum Ladders • Pallet Racking • **AMROX** Dual Wheel Bench Grinder • Bolt Bins and Contents • Work Bench with vises • (2) Hand Trucks • Mechanics Creeper • Truck Tires • Gas Cans • **DEWALT** AM/FM Radio



HOOK LIFT TRUCK AND BODIES



'09 KENWORTH T800

2009 KENWORTH Model T800 Tri Axle Hook Lift Truck, powered by Cat C-13 Acert, 470HP diesel engine and Fuller RT016908LL 10 speed transmission, equipped with 2008 Galbreath U5-HK-176, 50,000# Capacity Hook Lift Body, s/n 13H30445, 3-stage engine brake, cruise control, air conditioning, 18,710# front axle, 46,000# rears, 13,200# steerable airlift 3rd axle, beam suspension, and 425/65R22.5 front and 11R24.5 rear and lift tires. In very good condition with good to very good tires. (13,200# Steerable Airlift 4th Axle Removed and Will Be Sold Separately) (1,233 Hours) (17,621 Miles) (Remaining Warranty)

19' Steel Flatbed with ramps and headboard • 30 Yard Roll-off Body with swing gate • 20 Yard Roll-off Body with swing gate • 18 Yard Roll-off Body with 2-way gate

HOOK LIFT BODIES



DUMP TRUCKS



'07 FREIGHTLINER M2

2004 FREIGHTLINER Model Business Class M2 Tandem Axle Dump Truck, powered by Mercedes-Benz 450HP diesel engine and Fuller 8LL 10 speed transmission, equipped with OX 16', 17-19 yard steel dump body with 2-way gate, electric tarp and cab protector, 46,000# rears, 20,000# front axle, 2-stage engine brake, aluminum wheels, dual 100 gallon aluminum fuel tanks, rear glad hands, heated mirrors, underbody job box, cruise control, air conditioning, 425/65R22.5 front, 11R24.5 rear, and 385/65R22.5 airlift tires. In good to very good condition with good to very good tires. (1/4" T1 Floor and Sides in Body) **(Purchased New)**



'00 FREIGHTLINER FL80

2007 FREIGHTLINER Model Business Class M2 Tri-Axle Dump Truck, powered by Mercedes-Benz 450HP diesel engine and Fuller 8LL 10 speed transmission with lo-lo, equipped with OX 16', 17-19 yard steel dump body with 2-way gate, electric tarp and cab protector, 46,000# rears, 20,000# front and 18,000# air-lift 3rd axles, 3-position engine brake, dual 100 gallon aluminum fuel tanks, rear glad hands, heated mirrors, cruise control, air conditioning, 425/65R22.5 front, 11R24.5 rear, and 385/65R22.5 airlift tires. In good to very good condition with good tires. (1/4" T1 Body Floor) (3/16" T1 Body Sides) **(Purchased New)**



2000 FREIGHTLINER Model FL80 Single Axle Dump Truck, powered by Cat 3126 diesel engine and Fuller 8LL 10 speed transmission, equipped with 10'6" steel dump body with 2-way gate and cab protector, 21,000# rear and 12,000# front axles, engine brake, aluminum front wheels, heated mirrors, cruise control, air conditioning, and 11R22.5 tires. In good condition with good to very good tires. (15,000 Miles On Rebuilt Engine-Cleveland Brothers)

'04 FREIGHTLINER M2



'06 FORD F-550XL 4X4

2006 FORD Model F-550XL Super Duty 4x4 Quad Cab Utility Dump Truck, powered by Powerstroke 6L diesel engine and automatic transmission, equipped with 9' utility/dump body with manual tarp, 115 gallon fuel tank with electric pump, tow package with electric, VanAir under hood air compressor, Powerverter 3000 Watt power inverter, air conditioning, and 225/70R19.5 tires. In very good condition with good tires. (2,893 Hours) (064,790 Miles) **(Purchased New)**



'03 FORD F-550XL 4X4

2003 FORD Model F-550XL Super Duty 4x4 Dump Truck, powered by Triton V-10 gas engine and automatic transmission, equipped with 9' steel dump body with cab protector, 6,000# front and 13,500# rear axles, underbody storage boxes, pintle hitch with electric dual rear wheels, air conditioning, and 225/70R tires. In good condition with very good tires. **(Purchased New)**

HYDRAULIC EXCAVATORS AND ATTACHMENTS



'06 KOBELCO SK115SRDZ-1E

2006 KOBELCO Model SK115SRDZ-1E Hydraulic Excavator, s/n YY04-07931, powered by Isuzu 4 cylinder diesel engine and hydraulic drive, equipped with 8' dipper stick, Geith hydraulic quick disconnect, hydraulic plumbing, 36" digging bucket, 102" backfill blade, enclosed ROPS cab with heat and air conditioning, light package, 23.5 TBG pads, and 11'10" crawlers. In very good to good condition with good undercarriage. (03,363 Hours) **(Purchased New)**

2005 KOBELCO Model ED-150-1E Blade Runner Hydraulic Excavator, s/n YL05-00669, powered by Isuzu BB-4BGIT diesel engine and hydraulic drive, equipped with 9'6" dipper stick, hydraulic quick disconnect, hydraulic plumbing, 42" digging bucket, 8'2" 6-way straight blade with 13" fold away extensions, enclosed ROPS cab with heat and air conditioning, light package, 11'9" crawlers, and 24" TBG pads. In good condition with good undercarriage. (03,230 Hours) **(Purchased New)**



'05 KOBELCO ED-150-1E BLADE RUNNER



'02 TAKEUCHI TB145

2002 TAKEUCHI Model TB145 Mini Hydraulic Excavator, s/n 14511725, powered by Yanmar 4 cylinder diesel engine and hydraulic drive, equipped with 70" dipper stick, swing boom, WB manual quick disconnect, enclosed ROPS cab with heat, hydraulic plumbing, 24" digging bucket, 72" backfill blade, light package, 16" DBG pads with street pads, and 97" crawlers. In good condition with good undercarriage. (05,178 Hours) **(Purchased New)**



'00 TAKEUCHI TB145

2000 TAKEUCHI Model TB145 Mini Hydraulic Excavator, s/n 14510343, powered by Yanmar 4 cylinder diesel engine and hydraulic drive, equipped with 68" dipper stick, swing boom, manual quick coupler, enclosed ROPS cab with heat, hydraulic plumbing, 24" digging bucket, 72" backfill blade, light package, 8' crawlers, and 18" pads with bolt on street pads. In good condition with good undercarriage. (07,106 Hours) **(Purchased New)**



'08 ALLIED 110BU

2008 ALLIED Model 110BU Hydraulic Demolition Hammer, s/n 00055. In very good condition. (Rebuilt by Allied Approximately 3 Months Ago) (Fits Kobelco Excavators) **(Purchased New)**

Buckets: Kobelco Excavators: (2) 24" Digging • Takeuchi Excavators: 24" Digging; (2) 12" Digging; 42" Cleanup; 30" Cleanup

TRACTOR LOADER BACKHOE



'07 CAT 420EIT 4X4

digging bucket, hydraulic plumbing, front counterweight, enclosed ROPS cab with heat and air conditioning, light package, 12.5/80x18 front and 19.5Lx24 rear tires. In good to very good condition with fair to good tires. (1,807 Hours) **(Purchased New)**
CAT 420EIT Attachments: 48" Fork Attachments • 12" Digging Bucket

2007 CATERPIL-LAR Model 420EIT 4x4 Tractor Loader Extend-A-Hoe, s/n KMW02003, powered by Cat 4 cylinder diesel engine and shuttle transmission, equipped with general purpose bucket with bolt-on cutting edge, front hydraulic quick disconnect, auxiliary hydraulics, rear manual quick disconnect, 24"

CRAWLER LOADER

2005 CATERPILLAR Model 953C Crawler Loader, s/n BBX02012, powered by Cat 3126 diesel engine and hydrostatic drive, equipped with GP loader bucket with teeth, 15" DBG pads, enclosed ROPS cab, air conditioning, and light package. In very good condition with very good undercarriage. (5,020 Hours) (Approximately 386 Hours On Complete Undercarriage)



'05 CAT 953C

CRAWLER TRACTORS



'05 JOHN DEERE 650J XLT

2005 JOHN DEERE Model 650J XLT Crawler Tractor, s/n 113034, powered by John Deere 6 cylinder diesel engine and hydrostatic transmission, equipped with 6-way blade, differential steering, enclosed ROPS cab with A/C and light package, tow pin, and 18" SBG pads. In good condition with fair to good undercarriage. (2,707 Hours)

1995 CATERPILLAR Model D5C Series III Crawler Tractor, s/n 9DL01058, powered by Cat 6 cylinder diesel engine and powershift transmission, equipped with 6-way blade, tow pin, 20" SBG pads, ROPS canopy, heater, soft cab, and light package. In good condition with fair undercarriage.



'95 CAT D5C SERIES III

SKID STEER LOADERS AND ATTACHMENTS

2008 TAKEUCHI Model TL250 Crawler Skid Steer Loader, s/n 22500056, powered by Kubota 4 cylinder diesel engine and hydrostatic drive, equipped with 80" loader bucket with teeth, auxiliary hydraulics, hydraulic quick disconnect, enclosed cab with heat and air conditioning, light package, and 17"x7" rubber crawlers. In good condition with good undercarriage. (02,447 Hours) **(Purchased New)**



'08 TAKEUCHI TL250

2004 NEW HOLLAND Model LS190 Skid Steer Loader, s/n LMU018583, powered by New Holland CNH 4 cylinder diesel engine and 2 speed hydrostatic transmission, equipped with Super Boom, 80" loader bucket with bolt-on Rezloh cutting edge, enclosed ROPS cab with heat, light package, and 12x16.5 foam filled tires. In good condition with good to very good tires. (1,694 Hours) **(Purchased New)**



'04 NEW HOLLAND LS190



'07 TAKEUCHI TL150

2007 TAKEUCHI Model TL150 Crawler Skid Steer Loader, s/n 21504898, powered by Yanmar diesel engine and hydrostatic transmission, equipped with 80" loader bucket with teeth, auxiliary hydraulics, enclosed ROPS cab with heat and air conditioning, light package, and 7"x18" rubber crawlers. In good condition with good undercarriage. (02,638 Hours) **(Purchased New)**



SKID LOADER ATTACHMENTS

HUSKY HH500

Skid Steer Attachments: HUSKY Model HH500 Hydraulic Demolition Hammer with skid steer mounting plate (will also fit mini excavators) • INGERSOLL-RAND Model 42 Hydraulic Pallet Fork Attachment, s/n 230900105, with hydraulic fork positioning • KEM Model 72B, 72" Rockhound, s/n B98030304 • 15" Steel Tracks (Fits NH LS180/LS190) • 3-Point Hitch Attachment • TAKEUCHI 75" Loader Bucket • (2) 48" Fork Attachments

2003 TAKEUCHI Model TL140 Crawler Skid Steer Loader, s/n 21400151, powered by Isuzu diesel engine and hydrostatic transmission, equipped with 77" loader bucket with teeth, auxiliary hydraulics, enclosed ROPS cab with heat and light package, and 17"x6'6" rubber crawlers. In good condition with good undercarriage. (03,421 Hours) **(Purchased New)**



'03 TAKEUCHI TL140

VIBRATORY COMPACTOR



1986 SAKAI Model SV70D Rubber Tired Vibratory Compactor, s/n 30085, powered by Deutz 5 cylinder diesel engine and hydrostatic drive, equipped with 67" smooth drum, drum drive, drum cleaner, roll bar, and 16.9x24 tires. In good condition with good tires.

'86 SAKAI SV70D

CREW CAB PICKUP AND UTILITY TRUCKS

2010 FORD Model F-150 FX4, 4x4 Crew Cab Pickup Truck,

powered by Triton V-8 gas engine and automatic transmission, equipped with power windows, locks, mirrors and seats, 6' bed, bed liner, bed extender, cross tool box, tow package with electric, aluminum alloy wheels, running boards, cruise control, air conditioning, and tires. In very good condition with good tires. (41,912 Miles) **(Purchased New)**



'10 FORD F-150 4X4

2005 CHEVY Model 2500HD Silverado Utility Truck,

powered by Vortec 6L gas engine and automatic transmission, equipped with 8' utility body, side tool boxes, material rack, Auto Crane Econo-Ton II electric pedestal crane, air conditioning, and 265/75R16 tires. In good condition with good to very good tires.



'05 CHEVY 2500HD

2003 FORD F-350 Super Duty Lariat 4x4 Crew Cab Pickup Truck,

powered by Triton V-10 gas engine and automatic transmission, equipped with 8'6" bed, 105 gallon fuel tank with electric pump, cross tool box, bed liner, power windows, locks and mirrors, power heated seats, FX4 off road package, cruise control, air conditioning, running boards, and 285/75R16 tires. In good condition with good tires. **(Purchased New)**



'03 FORD F-350 4X4

CONTRACTOR AND SURVEY TOOLS



CONTRACTORS TOOLS

TRA PRECISION L600 Rotary Laser • **TOPCON** Marksman RL50B • **BERGER** 200B Transit • **FISHER** TW-6 Pipe and Cable Locator • **HEATH** LS-500 Pipe and Cable Locator • **SCHONSTEDT** GA-52CX Magnetic Locator • Portable Electric Mortar Mixer • Concrete Finishing Tools • Concrete Blankets • Brick Wheelbarrow • Walk Behind Spreaders • Wheelbarrows • Lawn Rollers • Assorted Hand Tools • Propane Torch • (12) Pipe Plugs • Job Box • Safety Cones • Plastic Barricades • (4) Small Road Plates • (6) 2'x8' Aluminum Trench Shore Panels with (4) adjustable spreaders • (6) 7'6"x14' Lawn Mats • 300 Gallon Poly Tank with enclosure • Assorted PVC Pipe and Fittings • Manhole Covers • Precast Inlets • (Approximately 30) Concrete Stackable Barricades • Assorted Concrete Block and Brick

ICS 633GC, 14" Concrete Chain Saw (UNUSED Bar and Chain) • **LAY-MOR** 39" Walk Behind Broom, gas engine, hydrostatic transmission • **IR** BX-8 Plate Compactor • **DYNAPAC** LT62 Foot Compactor • (2) **STIHL** TS460 Demo Saws • **PARTNER** K950 Demo Saw • **STIHL** 038AV Chain Saw • **STIHL** 038 Chain Saw • 3" Trash Pump • **IR** 60# Paving Breaker • 30# Chipping Hammer • **SPECTRA PRECISION** DG711 Pipe Laser • **SPECTRA PRECISION** GL522 Dual Sloping Laser • **SPEC-**

TAG-A-LONG AND CARGO TRAILERS

2008 ROGERS Model TAG 20-28/102/2XSP, 20 Ton Tandem Axle Tag-A-Long Trailer,

equipped with 48,810# GVWR, 22' level deck, 6' beavertail, 6' ramps, 102" width, air brakes, and 215/75R17.5 tires. In good condition with good to very good tires. **(Purchased New)**



'08 ROGERS 20 TON



'08 HAULMARK

2008 HAULMARK 21' Tandem Axle Cargo Trailer,

equipped with 3,178# GVWR, 16' cargo body with 5' V nose, fold down front and rear doors, swing side door, and 205/75R15 tires. In good to very good condition with good tires. **(Purchased New)**

2001 CUSTOM 6 Ton Tandem Axle Tag-A-Long Trailer, equipped with 14,550# GVWR, 82"x18' wooden deck, 8" steel sides with stake pockets, 5' ramps, chain dogs, and 235/85R16 tires. In good condition with good tires. **(Purchased New)**

1999 CUSTOM Model 6T182ED-BTW, 6 Ton Tandem Axle Tag-A-Long Trailer,

equipped with 12,000# maximum load, 12,000# axle capacity, 2,550# curb weight, 14,550# GVWR, 18' wood deck, 82" deck width, 5' ramps, stake pockets, and 235/85R16 tires. In good condition with fair to good tires. **(Purchased New)**



TAG-A-LONG TRAILERS

1999 CUSTOM 6 Ton Tandem Axle Tag-A-Long Trailer, equipped with 14,550# GVWR, 77"x18' wooden deck with 4" sides with stake pockets, 5' ramps, and 225/75R16 tires. In good condition with very good tires. **(Purchased New)**

REAL ESTATE

(AVAILABLE FOR SHORT OR LONG TERM LEASE)



AVAILABLE FOR LEASE

Approximately (1+/-) Acre • 60'x100' Clear Span Pre-Engineered Building, with steel frame, radiant floor heat, (1) 12' and (2) 14' garage doors • Office with (3) work stations and air conditioning • Majority of yard is fenced • Security System and Security Cameras.