

1440 COWPATH RD. • HATFIELD, PA 19440
215/361-9099 • Fax: 215/361-9212
www.hunyady.com



'11 TAKEUCHI TL240



'13 FORD F-350XL 4X4



'15 CAT 305E2 CR

PRE-SORTED
FIRST CLASS MAIL
US POSTAGE
PAID
HAVERTOWN, PA
PERMIT #45



ABSOLUTE AUCTION COMPLETE LIQUIDATION

Oldaker Salvage LLC

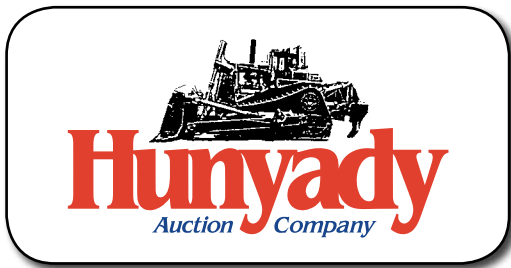
**THURSDAY,
AUGUST 24, 2017
9:00AM**



'06 CASE 621DXT

Westover, Pennsylvania

ABSOLUTE AUCTION



Oldaker Salvage LLC



Notice: Due to the untimely death of our customer and friend Pat Oldaker, Mrs. Traci Oldaker has decided to liquidate all assets of Oldaker Salvage LLC. Everything must sell to the highest bidder regardless of price!

Location: The auction will be held at 180 West Bridge Street, Westover, Pennsylvania 16692 (Just off US Route 36 – 26 Miles South of Punxsutawney and 28 Miles North of Altoona)

Directions: FROM THE INTERSECTION OF STATE ROUTE 36 AND WEST BRIDGE STREET (North End of Westover, PA): Turn East onto West Bridge Street and proceed (100) yards to sale site on left.

Online Bidding: Live internet bidding will be provided by Proxibid. Proxibid will charge an Internet Service Provider Fee of 5% to the successful internet bidder for items over \$10,000 and 10% for items \$10,000 and under, for each lot purchased on-line. All interested internet bidders are required to register w/Proxibid 24 hours prior to the auction at www.proxibid.com/hunyady or call 877-505-7770

Terms: Payment in full is required on sale day by cash, certified funds, or check with a bank letter of guarantee. Sample letter of guarantee: "We hereby guarantee the payment of our customer _____ written on his account up to _____ dollars for purchases at your auction sale on August 24, 2017". All guaranteed checks should be made payable to Hunyady Auction Co.

Sales Tax: Since this contractor is selling items not normally sold in the course of his businesses, the Commonwealth of Pennsylvania considers this an isolated sale and does not require the auction company to collect sales tax.

Financing: Financing is available, please contact Susan (215) 361-9099 at the auction company for details.

Inspection: Items will be available for inspection beginning one week prior to the auction from 8:00AM to 4:00PM or sale day morning beginning at 7:00AM. This site will be closed Saturday, Sunday, August 19th and 20th

Removal: After complete payment, all sale items may be removed on sale day as long as the removal activity is not disruptive to the sale and only until 5:00PM. Items may also be removed Friday, August 25th and Monday thru Wednesday, August 28th-30th, from 8:00AM until 4:00PM. All items must be removed no later than Wednesday, August 30, 2017 by 4:00PM

Sale Site Phone: (267) 446-3808 • Sale Site Fax: (888) 859-8958

CONTRACTORS TOOLS

Model 4B39P, 6" Skid Mounted Pump, s/n 124103, Cummins 4 cylinder diesel engine. In good condition. **(Meter Reads 708 Hours)** (Pump End Rebuild By Ram Industrial February 2017) • **WACKER** Walk Behind Roller, Honda 11HP gas engine and hydrostatic transmission, equipped with 30" smooth drums. In good condition. • **STOW** MS-93 Portable Cement Mixer, with Honda GX240 gas engine • **LINCOLN** Ranger 225GXT Welder/Generator **(0,020 hours)** • **HOBART** Champion 10,000 Welder/Generator, with Kohler 2 cylinder gas engine **(0,389 hours)** • **WACKER** G56 Generator, with Honda 11HP gas engine • **HONDA** EG2200X Gas Powered Generator • **HD** HDG9000ER Portable Generator, with 15HP gas engine • **PORTER CABLE** 5,000 Watt Generator, with 1 cylinder gas engine • **EX-CEL** 5,000 Watt Generator, with Briggs & Stratton 1 cylinder gas engine • **HOMELITE** Gas Powered Generator • **WACKER** PT3 Trash Pump, with Honda 8HP gas engine • **WACKER** PT-3, 3" Trash Pump, with Honda GX240 gas engine • **HONDA** HD3XH Centrifugal Pump, with Honda GX200 gas engine • **(2) TITAN** 3" Portable Trash Pumps • **(2)** Centrifugal Pump, with Honda GX120 gas engine • **(2)** Centrifugal Pump, with Honda GX120 gas engine • **ETQ** 3" Gas Powered Pump • **INGERSOLL-RAND** 11.8 CFM 90 PSI Portable Air Compressor, with Honda 5.5HP gas engine • Single Stage Skid Mounted Air Compressor, with Subaru 14HP gas engine • **BOSCH** Brute Electric Paving Breaker, with cart • **HUSQVARNA** 14" Gas Powered Chain Saw; **STIHL** 18" Gas Powered Chain Saw; **STIHL** MS250 Gas Powered Chain Saw • **STIHL** TS420 Gas Powered Demo Saw; **HUSQVARNA** K760 Gas Powered Demo Saw • **TOPCON** RLH3C Rotating Laser • **SPECTRA PRECISION** Laser Level, with tripod • **DIAMOND PRODUCTS** Hand Held Electric Core Drill • **(10)** Ladders including: 20' aluminum extension with adjustable legs; 35', 22', and 6' aluminum extension; 24' fiberglass extension; and 8', 6', & 4' fiberglass step • **GREENLEE** 1/2-2" Knockout Punch • **LIBERTY** 1 1/2" Sump Pump • **MYERS** HR50S Shallow Well Pump, with tank • **JET** 1 1/2 Ton Chain Come-A-Long • **HUSQVARNA** 225HBV Gas Powered Leaf Blower • **BADLAND** 12,000# Electric Winch • **SNAPPER** 24" Cut Walk Behind Mower, with Intek 17.5HP gas engine • **CRAFTSMAN** Walk Behind Mower • **STIHL** FS40C Gas Powered String Trimmer • **BOSCH** RS428 Reciprocating Saw • **DEWALT** 18-Volt Cordless Tool Set • **MILWAUKEE** 18-Volt Cordless Tool Set • **MASTER** F46H Power Trowel, with Honda GXV270 gas engine • Small Quantity 4" Discharge Hose • **WACKER** Electric Paving Breaker, with cart • **(2) JET** 1 Ton & **(1) JET** 1 1/2 Ton Chain Come-A-Longs • Small Quantity Lifting Chains, (3) Trailer Tires • (3) Contractor Kits • Concrete Contractor Kit including (1) lute, (1) rake, (1) texture broom, and (1) 48" bull float • Small Quantity Lifting Chains, Lifting Slings, & Shackles • 48" Digging Bucket • 4'x12'6"x1 1/2" Road Plate • (5) 4'x8'x1/2" Road Plate • Approx. 250 Gallon Fuel Storage Tank, with manual pump and (2) saddles • Small Quantity Assorted Steel Plate • Steel Rack, with stock and pipe • Small Quantity Steel Grating • 60" Forklift Forks • (4) Wheelbarrows • Electric Sewer Router • **(2) BOSCH** 11247 Hammer Drills • **BOSCH** Bulldog Hammer Drill • **BOSCH** RS5 Reciprocating Saw • **(2) MILWAUKEE** Sawzalls • **PORTER CABLE** Circular Saw • **HITACHI** G12SR Angle Grinder • **MILWAUKEE** 10 1/4" Circular Saw • **BOSCH** 1405VSR Screw Shooter & 1375 Angle Grinder • **MILWAUKEE** Deep Cut Portable Band Saw • **SKILL SAW** 7 1/4" Circular Saw • **MILWAUKEE** 1/2" Electric Drill • **JEM** 3/8" Electric Drill • Small Quantity 6" Discharge Hose • **JONSERED** 16" Gas Powered Chain Saw • **TANAKA** 1/2" Gas Powered Drill • Shopmade Skid Mounted Straw Blower, ThermoKing 4 cylinder diesel engine

WOODWORKING AND SHOP TOOLS

CRAFTSMAN 7" Table Saw • **CRAFTSMAN** 6" Jointer • **CRAFTSMAN** Router, with table • **GRIZZLY** G0454 Planer • **HD POWER** Cut-40M Plasma Cutter • **MILLER** Dialarc 250 Portable Electric Welder • **POWERMAX** 1250G3 Series Wire Feed Welder, with cart • **BLACK BULL** 20 Gallon Portable Sandblast Pot • **SIMPSON** 3000 PSI Portable Pressure Washer, with Honda GVC190 gas engine • **PPW** HSE-1502-OM10 Portable Electric Pressure Washer • **COATS** 10-10 Tire Machine • **EXCEL** Tire Inflator • Air Pig • **ORBID** 5 Speed Drill Press • **SNAP-ON** Battery Charger Starter, with cart • Electric Parts Washer • Digital Platform Scale • Manual Luber, with cart • Oxygen/Acetylene Torch Set, with cart (Bottles Not Included) • (6) Jack Stands • Pallet Jack • Portable Dump Hopper • Approx. (25) Fire Extinguishers • 100# Anvil • Portable Dual Wheel Jack • Portable Electric Paint Sprayer • (12) 5 to 20 Ton Bottle Jacks • (2) Railroad Jacks • (2) Mechanics Creepers • Pipe Crimper • **REDDY HEATER** Space Heater • **(2) REDDY HEATER** 155,000 BTU Portable Space Heaters • **DURAHEAT** DFA170C Portable Space Heater • Appliance Dolly • Banding Cart • **COPELAMETIC** Compressor • **WAYNE** 6163 Electric Air Compressor • (14 Sections) Scaffold; (2) Pickup Toolboxes; Oxygen/Acetylene Torch Set, with cart; Mechanics Creeper; Pneumatic Luber; & Miscellaneous Parts • **(4) INGERSOLL RAND** 1/2" Pneumatic Impact Wrenches • **CRAFTSMAN** 1/2" Pneumatic Impact Wrench • **(3) INGERSOLL RAND** 3/8" Pneumatic Impact Wrenches • **CP** 3/8" Pneumatic Impact Wrench • **SNAP-ON** 1/2" Pneumatic Impact Wrench • **CP** 1" Pneumatic Impact Wrench • **(2) INGERSOLL RAND** 1" Pneumatic Impact Wrenches • **CRAFTSMAN** Pneumatic Sander • **(2) INGERSOLL RAND** Pneumatic Grinders • Pneumatic Angle Grinder • **ARU** Pneumatic Grinder • 3/8" Pneumatic Ratchet • **(19) INGERSOLL RAND** and **CP** Pneumatic Drills • Pneumatic Chipping Gun • 1" Drive Ratchet • 3/4" Torque Wrench • **BLACK & DECKER** 7" Electric Angle Grinder • 4.5" Electric Angle Grinder • **SNAP-ON** Torque Wrench • Camshaft Bearing Tool • **CRAFTSMAN** Socket and Combination Wrench Set • **SNAP-ON** 1/4" Pneumatic Ratchet • **MILWAUKEE** Cordless Grease Gun • **CRAFTSMAN** Solder Gun • Valve Spring Compressor • **SPEEDAIRE** 5HP 2-Stage Vertical Shop Air Compressor • (2) Pneumatic Paint Guns • (2) 3/4" Ratchets • Assorted Impact Sockets • **(2) INGERSOLL RAND** Pneumatic Straight Line Sanders • **HITACHI** 3/8" Electric Drill • Bolt Bins and Hardware • (2) Carousel Bolt Bins & Hardware

HYDRAULIC EXCAVATORS AND ATTACHMENTS



2015 CATERPILLAR Model 305E2 CR Hydraulic Mini Excavator, s/n DJX01282, powered by Cat C1.8-DI-ET05 diesel engine and hydraulic drive, equipped with swing boom, 69" dipper stick, Cat 24" digging bucket, dual function auxiliary hydraulics, Cat hydraulic thumb attachment, 78" backfill blade, enclosed ROPS cab with heat and air conditioning, and 16" rubber crawlers. In very good condition with good to very good undercarriage. **(704 Hours)**

'15 CAT 305E2 CR

2014 CATERPILLAR Model 303.5E Hydraulic Mini Excavator, s/n RKY04111, powered by Cat C1.8 diesel engine and hydraulic drive, equipped with swing boom, 62" dipper stick, Cat 12" digging bucket, Wedglock coupler, auxiliary hydraulics, 70" backfill blade, enclosed ROPS cab with heat and air conditioning, and 12" rubber crawlers. In good condition with good undercarriage. **(879 Hours)**



'14 CAT 303.5E

CATERPILLAR 304ECR, 304DCR, 303CR, 303.5 Attachments: NPK C-20 Hydraulic Plate Compactor, s/n 2N1161 • **CAT 18" Digging Bucket** • **WB 18" Digging Bucket** • **CAT 16" Digging Bucket** • **WB 36" Cleanup Bucket**, with bolt-on cutting edge • **WB 36" Cleanup Bucket**, with teeth • **CAT 36" Digging Bucket** • **WB 36" Digging Bucket**



ATTACHMENTS

2005 CASE Model CX160 Hydraulic Excavator, s/n DAC162050, powered by Case 4 cylinder diesel engine and hydraulic drive, equipped with 8'6" dipper stick, Case 36" digging bucket, auxiliary hydraulics, Esco manual thumb attachment, enclosed ROPS cab with heat, and 24" TBG pads. In good condition with good undercarriage.



'05 CASE CX160

2000 CATERPILLAR Model 330BL Hydraulic Excavator, s/n 6DR03975, powered by Cat 3306 diesel engine and hydraulic drive, equipped with 12' dipper stick, 44" digging bucket, thumb attachment, enclosed ROPS with heat and air conditioning, and 34" TBG pads. In good condition with good undercarriage.



'00 CAT 330BL

1999 CASE Model 9020B Hydraulic Excavator, s/n DAC0202618, powered by Isuzu 4 cylinder diesel engine and hydraulic drive, equipped with 10' dipper stick, 35" digging bucket, thumb attachment, enclosed ROPS cab with heat, and 24" TBG pads. In fair condition with fair undercarriage.



'99 CASE 9020B

2004 TEREX Model HR42 Hydraulic Excavator, s/n 000342/0180, powered by Deutz 4 cylinder diesel engine and hydraulic drive, equipped with swing boom, 8' dipper stick, 27" digging bucket, auxiliary hydraulics, manual thumb attachment, 96" backfill blade, enclosed ROPS cab with heat, and 20" TBG pads. In good condition with fair to good undercarriage. **(3,302 Hours)** (No Stick Cylinder)

RUBBER TIRED AND CRAWLER LOADERS



2006 CASE Model 621DXT Rubber Tired Loader, s/n JEE0140043, powered by Case 6 cylinder diesel engine and powershift transmission, equipped with ACS GP loader bucket with bolt-on cutting edge, ACS hydraulic coupler, auxiliary hydraulics, traction control, ride control, enclosed ROPS cab with heat and air conditioning, and 20.5R25 tires. In good condition with good tires (one poor tire). **(3,585 Hours)**

'06 CASE 621DXT

CATERPILLAR Model 977K Crawler Loader, s/n 11K02536, powered by Cat 6 cylinder diesel engine and powershift transmission, equipped with GP loader bucket with teeth, ROPS canopy with forestry package, rock guards, and 18" SBG pads. In good condition with fair undercarriage.

CATERPILLAR 60" Fork Attachment (Fits Case 621D)

CAT 977K



SKID STEER LOADERS AND ATTACHMENTS



2011 TAKEUCHI Model TL240 Crawler Skid Steer Loader, s/n 224001172, powered by Yanmar 4 cylinder diesel engine and hydrostatic transmission, equipped with 74" GP loader bucket with bolt-on cutting edge, hydraulic coupler, high flow auxiliary hydraulics, enclosed ROPS cab with heat and air conditioning, and 17" rubber crawlers. In good condition with good undercarriage. **(1,763 Hours)**

'11 TAKEUCHI TL240

2012 CASE Model SV250 Skid Steer Loader, s/n JAFSV250VCM460645, powered by Case 4 cylinder diesel engine and hydrostatic transmission, equipped with 72" loader bucket with bolt on cutting edge, high flow auxiliary hydraulics, ride control, auxiliary electric, enclosed ROPS cab with heat, and 33x12-20 cushion tires. In good condition with good tires. **(985 Hours)** (Missing Door)



'12 CASE SV250



ATTACHMENTS

BTI Hydraulic Demolition Hammer • **BOBCAT 6' Hydraulic Broom Attachment** • **5' Hydraulic Trencher Attachment** • **72" Hydraulic Grapple Bucket**, with bolt-on cutting edge • **MCMILLEN X1475 Hydraulic Auger Attachment**, with 12" and (2) 24" flights • **CAT SG16B Hydraulic Stump Grinder Attachment** • **BOBCAT LR6B Hydraulic Landscape Rake** • (2) **48" Fork Attachments** • **Skid Steer Tracks**

MOTOR GRADERS AND AERIAL LIFT

CHAMPION Model 715 Motor Grader, s/n 715-14-266-1527-2, powered by Detroit 4 cylinder diesel engine and powershift transmission, equipped with 12' full hydraulic moldboard, front mounted scarifier, enclosed ROPS cab with heat, and 14.00x24 tires. In good condition with good tires.

CLARK Model 301, 6x6 Motor Grader, s/n 618A046K, powered by Detroit V-6 diesel engine and powershift transmission, equipped with 14' moldboard, all wheel steer, enclosed ROPS cab with heat, and 14.00x24 tires. In fair condition with fair tires.



'97 GENIE Z45 45'

1997 GENIE Model Z45, 45', 4x4 Self-Propelled Aerial Lift, s/n 005087, powered by Deutz 3 cylinder diesel engine and hydraulic drive, equipped with 4-section scissor boom with hydraulic extending 5th section, 27"x69" man/material basket, basket leveling and rotation, and 14x17.5 tires. In good condition with good tires. **(3,742 Hours)**



CHAMPION 715

PORTABLE CHIPPER, UTILITY TRACTOR, AND VIBRATING SCREEN



'04 VERMEER BC1000XL

2004 VERMEER Model BC1000XL Portable Chipper, s/n 1VRU111AX41004374, powered by 4 cylinder diesel engine, equipped with 54" feed chute, 18" feed drum, trailer mounted with 225/75R15 tires. In good condition with good tires. **(1,384 Hours)**

HESTON Model 90-90 Utility Tractor, s/n 242718, powered by 5 cylinder diesel engine and shuttle transmission, equipped with 3-point hitch, PTO, drawbar, hydraulic outlets, sun canopy, 10.00x16 front and 18.4x34 rear tires. In fair condition with good tires.

MASSEY FERGUSON 1051 3-Point Hitch Brush Mower

SCREEN MACHINE 4'x8' Single Deck Vibrating Screen, s/n E8SMJD1636, powered by 5HP 460-volt electric motor, with structure. In good condition.

DUMP TRUCKS/SNOWPLOW TRUCKS

2013 FORD Model F-350XL Super Duty 4x4 Single Axle Dump Truck, powered by 6.2L gas engine and automatic transmission, equipped with 9' steel dump body, Fisher 8'6" snowplow with Sno Foil and Minute Mount II, Buyers Salt Dogg 8' stainless steel salt spreader with 10.5HP gas engine, dual rear wheels, tow package, power windows, locks, and mirrors, cruise control, air conditioning, and 265/70R17 tires. In good condition with good tires. **(56,320 Miles)**



'13 FORD F-350XL 4X4

2011 FORD Model F-350XL Super Duty 4x4 Single Axle Dump Truck, powered by 6.2L diesel engine and automatic transmission, equipped with 9' steel dump body, Western 8'6" snowplow with Ultra Mount, Buyers Salt Dogg 8' steel salt spreader with 10.5HP gas engine, dual rear wheels, tow package, cruise control, air conditioning, and 265/70R17 tires. In good condition with good tires. **(84,283 Miles)**



'11 FORD F-350XL 4X4

1993 FORD Model F-350XL, 4x4 Single Axle Dump Truck, powered by 8 cylinder diesel engine and 5 speed transmission, equipped with 8'6" steel dump body, Fisher 9' snowplow, rear hydraulic outlets, rear electric controls, dual fuel tanks, dual rear wheels, tow package, and 235/85R16 tires. In fair condition with good tires. **(79,838 Miles)** (Bad Clutch)

1990 INTERNATIONAL Model 4900 Tandem Axle Dump Truck, powered by Int'l 6 cylinder diesel engine and 5 speed transmission with 2 speed rear, equipped with 15' steel dump body with single chute and manual tarp kit, airlift 2nd axle with 9.00x20 tires, and 12R22.5 front and 11R22.5 rear tires. In good condition with fair tires.



'90 INT'L 4900

1984 INTERNATIONAL Model Paystar 5070, 4x4 Single Axle Dump Truck, powered by 6 cylinder diesel engine and Fuller 8LL, 10 speed transmission, equipped with 11' steel dump body with aluminum gate and single chute, 13'9" snowplow, Buyers Salt Dogg 10' stainless salt spreader with 10.5HP gas engine, and 425/65R22.5 front and 11.00R20 rear tires. In fair condition with good tires.

FLATBED AND FIRE TRUCKS

2005 RAM Model 3500, 4x4 Single Axle Flatbed Truck, powered by Cummins 6 cylinder diesel engine and 6 speed transmission, equipped with 8'6" steel flatbed, dual rear wheels, running boards, cruise control, air conditioning, and 245/75R17 tires. In good condition with good tires. **(121,541 Miles)**



'05 RAM 3500 4X4

1975 HENDRICKSON/PIERCE Model FTC0-2070 Single Axle Fire Truck, powered by Cummins NTF295 diesel engine and automatic transmission, equipped with Waterous 1,000 gpm pump, 50' Telesquirt ladder, upper and lower controls, (2) hydraulic outriggers, Jacobs 3-stage engine brake, and 11.00R20 tires. In good condition with good tires. (Upper Controls Not Working)

TILT DECK AND STORAGE TRAILERS



'15 TOWMASTER T-14DT

2015 TOWMASTER Model T-14DT Tandem Axle Tilt Deck Trailer, equipped with 18' tilt deck, 4' front deck, 78" deck width, 102" overall width, 18,740# GVWR, breakaway brake system, chain dogs, and 215/75R17.5 tires. In good condition with good tires.

2011 PJ Model T8222, 7 Ton Tandem Axle Tilt Deck Trailer, equipped with 22' level deck, 7' 7 1/2" deck width, 96" overall width, stake pockets, and 235/870R16 tires. In good condition with good tires.

(4) Storage Trailers • 8'x20' Overseas Storage Container

TRUCK TRACTORS AND LOWBOY TRAILERS

1996 PETERBILT Model 379 Tri Axle Truck Tractor, powered by Cat 3406 diesel engine (475HP turned up to 525HP) and Fuller 18 speed transmission, equipped with 46,000# rears, 12,000# front and 25,000# lift axle, air ride suspension, wetline, 260" wheelbase, air slide 5th wheel, 3-stage engine brake, aluminum headache rack and wheels, heated power mirrors, pneumatic passenger window, air conditioning, and 315/80R22.5 front and 295/75R22.5 rear tires. In good condition with good tires.



'96 PETERBILT 379 AND PHELAN 35 TON

1978 INTERNATIONAL Model F2554 Tandem Axle Truck Tractor, powered by Int'l 6 cylinder diesel engine and Fuller RT6613, 15 speed transmission, equipped with 38,000# rears, 10,860# front axle, spring/beam suspension, 186" wheelbase, manual sliding 5th wheel, and 11.00R20 tires. In good condition with good tires.

1987 AUTOCAR Tandem Axle Truck Tractor, powered by Cat 6 cylinder diesel engine and Fuller 8LL, 10 speed transmission, equipped with 44,000# rears, 12,000# front axle, spring suspension, 188" wheelbase, wet line, air slide 5th wheel, and 11R24.5 tires. In fair to good condition with good tires.

1987 BORCO Model VG-60, 60 Ton Tri Axle Lowboy Trailer, equipped with gas pony motor, 22'6" level deck, 96" deck width, 24" transition, 12' over axles, spring suspension, outriggers, chain dogs, and 11.00R24.5 tires. In good condition with fair to good tires.

1976 PHELAN Model WT-35HHN, 35 Ton Tandem Axle Lowboy Trailer, equipped with gas pony motor, 20' level deck, 96" deck width, 8'6" over tandems, beam suspension, 87,400# GVWR, outriggers, chain dogs, and 11R22.5 tires. In good condition with good to very good tires.

UTILITY, SERVICE, AND PICKUP TRUCKS, AND PASSENGER VAN



'08 RAM 3500HD SLT 4X4

2008 RAM Model 3500HD SLT, 4x4 Crew Cab Utility Truck, powered by Cummins 6.7L diesel engine and automatic transmission, equipped with 9' walk-in utility body, approx. 100 gallon fuel tank with electric pump, Western 8'6" V-plow with Ultra Mount, dual rear wheels, tow package, power windows, locks, mirrors, and seats, cruise control, air conditioning, and 235/80R17 tires. In good condition with good tires. **(126,055 Miles)** (Missing Plow Parts)

1996 GMC Model Topkick Single Axle Service Truck, powered by 8 cylinder gas engine and 5 speed transmission, equipped with 12'6" service body, 14' electric service crane, (2) manual outriggers, air conditioning, and 10R22.5 tires. In fair condition with good tires. (Not Running - Bad Engine)

2011 FORD Model F-250XL Super Duty 4x4 Pickup Truck, powered by 6.2L gas engine and automatic transmission, equipped with 8' bed with crossbox, 100 gallon fuel tank with electric pump, Fisher 8' snowplow, Buyers salt spreader controls, tow package, running boards, power windows, locks, and mirrors, cruise control, air conditioning, and 265/70R17 tires. In good condition with good tires. **(128,471 Miles)**



'11 FORD F-250XL 4X4

2000 DODGE Model Dakota Sport Extended Cab Pickup Truck, powered by Magnum 8 cylinder gas engine and automatic transmission, equipped with 6'6" bed with spray-on liner, cruise control, air conditioning, and 31x10.50R15 tires. In fair condition with good tires. (Not Running)

1982 FORD Model F-250XL, 4x4 Pickup Truck, powered by 5.8L gas engine and automatic transmission, equipped with 8' bed, Boss 7'6" V-plow with Rapid Tach, tow package with electric, and 9.50R16.5 tires. In fair to good condition with good tires.

2007 FORD Model E350XLT Super Duty Passenger Van, powered by 5.4L gas engine and automatic transmission, equipped with power windows, locks, and mirrors, cruise control, air conditioning, and 225/75R16 tires. In good condition with good tires.

SNOW REMOVAL, ATTACHMENTS, STEEL, MATERIALS, AND MISCELLANEOUS

WESTERN Pro-Flo Electric Tailgate Spreader • BUYERS 8' Steel Salt Spreader, with Briggs & Stratton 8HP gas engine • **BUYERS Electric Tailgate Spreader • (3 Pallets) Ice Melt • HENSLEY 36" Digging Bucket • CP 24" Digging Bucket (PC120) • Approx. (80) Assorted Truck & Skid Steer Tires & Assorted Rims • 14'4" Steel Dump Body (Good Condition) • Log Bunks (Truck Type) • Truck and Equipment Filters • 300 Gallon Product Tank, with Husky diaphragm pump • 300 Gallon Fuel Storage Tank • 25 Gallon Product Tank, with pneumatic pump and hose reel • Chains and Binders • Plastic Barricades • Safety Fence • Small Quantity Silt Fence • Assorted Steel, Conduit, & Building Material**