

ABSOLUTE AUCTION

CONSTRUCTION EQUIPMENT & TOOL LIQUIDATION



Keeps You Rolling
moderngroup.com



Wednesday, May 25, 2011 - 9:00 AM
Farmingdale, New Jersey



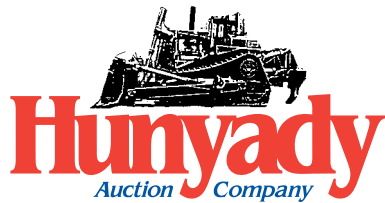
PALFINGER PIGGYBACK FORKLIFTS



'07 NEW HOLLAND E80MSR MIDI



(3) OF (4) SKID STEERS

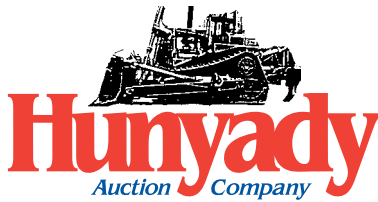


1440 COWPATH RD. • HATFIELD, PA 19440
215/361-9099 • Fax: 215/361-9212

PRE-SORTED
FIRST CLASS MAIL
US POSTAGE
PAID
HAVERTOWN, PA
PERMIT #45



NEVER A BUYER'S PREMIUM!



Notice: Modern Group Ltd has determined assets which are surplus to their construction equipment and tool rental fleet and will sell at absolute auction. Modern will continue to maintain new and used equipment inventories for the manufacturers they distribute, along with full line of parts and in-house repairs and road service calls. All equipment and tools are owned by Modern and will sell to the highest bidder without minimums, reserves or buyers premiums!

Auctioneer's Note: Please understand that inventory of equipment and parts is continually being compiled and brought in from other Modern facilities. We are confident in this representation, however please check our website, www.hunyady.com, one week prior to auction date for absolute accuracy.

Location: The auction will be held at Modern's Farmingdale facility located at 1325 Highway 34, Farmingdale, New Jersey 07727

Terms: Payment in full is required on sale day by cash, certified funds, or check with a bank letter of guarantee. Sample letter of guarantee: "We hereby guarantee the payment of our customer _____ written on his account up to _____ dollars for purchases at your auction sale on May 25, 2011." All guaranteed checks should be made payable to Hunyady Auction Co.

Sales Tax: Since the items being sold are considered dealer/rental inventory of Modern Group Ltd., the state of New Jersey requires the auction company to collect sales tax at a rate of 7% unless a valid exemption is presented.

Financing: Financing is available, please contact Susan (215) 361-9099 at the auction company for details.

Inspection: Items will be available for inspection one week prior to the auction beginning Thursday, May 19th continuing through sale day, from 8:00 a.m. until 5:00 p.m. The site will be closed Saturday and Sunday, May 21st and 22th. Items may also be inspected sale day morning beginning at 7:00 a.m.

Removal: After complete payment, all sale items may be removed on sale day as long as the removal activity is not disruptive to the sale and only until 5:00 p.m. Items may also be removed Thursday and Friday, May 26th and 27th and Tuesday, May 31st through Thursday, June 2nd, from 8:00AM until 5:00PM. All items must be removed by Thursday, June 2nd, 2011 by 5:00PM. Please note that the site will be closed Monday, May 30th in observance of Memorial Day.

Sale Site Directions: FROM INTERSTATE 195: Exit #35B (Route 34 North-Matawan) Follow Route 34 North (3.5) miles to traffic circle and follow completely around to Route 34 South and proceed (0.25) miles to sale site on right.

FROM GARDEN STATE PARKWAY: Exit #100A (traveling South) or Exit #100B (traveling North) and proceed to Route 33 West toward Freehold. Continue (1.75) miles to traffic circle and follow around to Route 34 South. Proceed (0.25) miles to sale site on right.

Remote Parking-Sale Day Only: Please note that there is limited parking at the auction site. A remote parking facility has been secured with shuttle buses running continuously throughout the day. The remote facility is located at the Collingwood Flea Market, located at 1350 Highway 33 and 34, Farmingdale, NJ 07727, which is less than (1) mile from sale site. **DIRECTIONS:** From traffic circle noted above continue on the circle and exit at Route 33 West. Continue (0.5) miles (flea market will be on your left) but is not accessible in this direction. You must continue (0.2) miles to legal U-turn and proceed back on Route 33 East to flea market (remote parking) on your right.

Airport Information: Private aviation is serviced (1.5) miles from sale site at Monmouth Executive Airport (KBLM) FBO: (732) 938-4800 • Commercial travel is serviced either through Philadelphia International Airport (77 miles) or Newark International Airport (51 miles)

Motel Information: Marriott Courtyard (732) 919-2780, 1302 Campus Parkway, Wall Township, NJ 07753 • Econ Lodge (732) 938-3110, 5309 SR 33 & SR 34, Farmingdale, NJ 07727

SALE SITE PHONE (BEGINNING MONDAY, MAY 16TH): 732-751-8567 SALE SITE FAX: (888) 859-8958

TAG-A-LONG TRAILER AND TRUCK ACCESSORIES



2010 CROSS COUNTRY 10HD825D0 10 Ton Tag-A-Long Trailer, s/n 431FS2527A1000207 20'x8'6" deck over wheels, 5' beavertail, 5' ramps, dual wheels, electric brakes, chain dogs, and 235/80R16 tires. In excellent condition with excellent tires. **(UNUSED)**

10 CROSS COUNTRY 10 TON - UNUSED

AUTO CRANE ECIHR 2,000# Electric Service Crane (UNUSED)

KNAPHEIDE and WEATHERGUARD Accessories To Include: Bulkhead • Material Rack • Knap Kaps • Telescopic Roof • Cross and Saddle Toolboxes • Cab Protectors • Tool Chests • Under-Bed Tool Box • Plus More!

PLUS: Shop Tools and Equipment; Office Furniture; Lg. Qty of Heavy Duty Pallet Racking and much more!



PALLET RACKING



ADDRESS: 1325 HIGHWAY 34, FARMINGDALE, NJ 07727

EXCAVATORS AND ATTACHMENTS

2007 NEW HOLLAND E80MSR Midi Excavator, s/n N7TA18103, powered by Isuzu diesel engine and hydraulic drive, equipped with 6'9" dipper stick with hydraulic beyond, 24" digging bucket, 8'2" backfill blade, swing boom, zero tailswing, enclosed ROPS cab with air conditioning, 23.5 TBG pads, and 9'4" crawlers. In good to very good condition with good to very good undercarriage. (0,425 Hours)



'07 NEW HOLLAND E80MSR

2008 NEW HOLLAND E27B Mini Excavator, s/n N8TN41497, powered by Yanmar diesel engine and hydraulic drive, equipped with 44" dipper stick with hydraulic beyond, 12" digging bucket, swing boom, zero tailswing, 60" backfill blade, ROPS canopy, and 10" rubber tracks. In good to very good condition with good undercarriage. (1,3350 Hours)

2007 NEW HOLLAND E27SR Mini Excavator, s/n N7TN41408, powered by Yanmar diesel engine and hydraulic drive, equipped with 44" dipper stick with hydraulic beyond, 24" digging bucket, sing boom, zero tailswing, 60" backfill blade, enclosed ROPS cab, and 10" rubber tracks. In good to very good condition with good undercarriage. (0,256 Hours)



'05 KOBELCO SK35SR-3

2005 KOBELCO SK35SR-3 Mini Excavator, s/n PX1211494, powered by Yanmar diesel engine and hydraulic drive, equipped with 4'4" dipper stick with hydraulic beyond, swing boom, zero tailswing, backfill blade, ROPS canopy, and 12" rubber tracks. In good condition with good undercarriage.



'00 CAL 1200



(2) OF (3) NEW HOLLAND E27B

2008 NEW HOLLAND E27B Mini Excavator, s/n N8TN41543, powered by Yanmar diesel engine and hydraulic drive, equipped with 44" dipper stick with hydraulic beyond, 12" digging bucket, swing boom, zero tailswing, 60" backfill blade, ROPS canopy, and 10" rubber tracks. In good to very good condition with good undercarriage. (0,271 Hours)

2000 CONSTRUCTION ATTACHMENTS Model CAL-1200 Hydraulic Demolition Hammer, s/n 12012, 1,200 ft lbs energy class, 10,000-20,000# machine weight class. **Various Sized Digging Buckets (UNUSED)**

SKID STEER LOADERS AND ATTACHMENTS



(3) OF (4) SKID STEERS

2007 NEW HOLLAND L175 Skid Steer Loader, s/n N7M470374, powered by New Holland 60HP diesel engine and hydrostatic transmission, equipped with 66" low profile general purpose bucket, hydraulic quick coupler, enclosed ROPS cab with heat and air conditioning, pilot controls, and 10x16.5 tires. In good condition with good tires. (0,474 Hours)

2007 NEW HOLLAND L170 Skid Steer Loader, s/n N7M471536, powered by New Holland 53HP diesel engine and hydrostatic transmission, equipped with 66" low profile general purpose bucket, hydraulic quick connect, enclosed ROPS cab with heat, foot controls, and 10x16.5 tires. In good condition with good tires. (0,278 Hours) (Super Boom)



'05 CAT 257B (BACKHOE SOLD SEPARATELY)

2005 CAT 257B Series II Crawler Skid Steer Loader, s/n SLK03165, powered by Cat diesel engine and hydrostatic transmission, equipped with 66" general purpose bucket, ROPS canopy, and 15" rubber tracks. In good condition with good undercarriage. (1,564 Hours)

2004 ASV RC-100 Crawler Skid Steer Loader, s/n RSD00596, powered by Perkins diesel engine and hydrostatic transmission, equipped with 72" general purpose bucket, hi-flow hydraulics, hydraulic coupler, enclosed ROPS cab with heat and air conditioning, and 18" rubber tracks. In good condition with good undercarriage. (Missing Front Door)

BRADCO 611 Backhoe Attachment, s/n 8611X5907, 18" bucket, operators seat, and outriggers • **2010 KENT KF5 Demolition Hammer** s/n 9620 (UNUSED) • **2008 KENT KF5 Demolition Hammer** s/n 9300-1 **Additional Attachments To Include:** Brooms • Grapples • Post Hole Diggers • Buckets • Steel Tracks • Tires



(2) KENT KF5 - ONE UNUSED

COMPACT LOADER BACKHOES



2010 ALLMAND TLB425ESL Compact Loader Backhoe, s/n 0010T42510, powered by Kubota diesel engine and hydrostatic transmission, equipped with 56" general purpose bucket, 15" digging bucket, ROPS post, 23x10.5x12 front and 31x15.5-15 rear tires. In very good condition with very good undercarriage. (0,191 Hours)

2010 ALLMAND TLB425ESL Compact Loader Backhoe, s/n 0011T42510, powered by Kubota diesel engine and hydrostatic transmission, equipped with 56" general purpose bucket, 15" digging bucket, ROPS post, 23x10.5x12 front and 31x15.5-15 rear tires. In very good condition with very good undercarriage. (0,234 Hours)

'10 ALLMAND TLB425ESL

SNOW REMOVAL AND MAINTENANCE EQUIPMENT



SNOWEX SPREADERS - UNUSED

SWENSON V-BOX SPREADERS - UNUSED



V-Box Spreaders (UNUSED): (2) **SWENSON** EV100-1050, 10' Hydraulic, 5.5 cu yd • (2) **SWENSON** MDV944EST, 9' Steel, 3.0 to 4.5 cu yd, B&S 10.5HP • (7) **SWENSON** PV358ESTS, 8' Stainless Steel, 1.8 to 2.0 cu yd, B&S 10.5HP • (2) **SNOWEX** SP-9500 V-Maxx 9' Poly, control package, 4.0 cu yd, electric 12V DC • (3) **SNOWEX** SP-7550 V-Maxx 6' Poly, control package, 1.4 cu yd, electric 12V DC • (2) **SNOWEX** SP-6000 Vee Pro 4' Poly, control package, 1.0 cu yd, electric 12V DC



AVALANCHE SNOW PUSHERS

Snow Pushers: **AVALANCHE** LDA-200-14, 14' (RT Loader) • **AVALANCHE** LDA-200-12, 12' (RT Loader) • (2) **AVALANCHE** BHA-200-12, 12' (Backhoe) (UNUSED) • (2) **AVALANCHE** BHA-200-10, 10' (Backhoe) (UNUSED) • (3) **AVALANCHE** SSA-200-10, 10' (Skid Steer) (UNUSED) • **PROTECH** SP10S, 10' (Skid Steer) • (2) **AVALANCHE** SSAE-08, 8' (Skid Steer)

Brine Spray Systems and Hydraulic Power Packs (UNUSED):

SWENSON DI-ICER Brine Spray System, 1,000 gallon poly tank, electric pump, spray bar, mounted on 12' steel frame with stand • **SWENSON** EVRGHSS Stainless Steel Gas Powered Hydraulic Power Pack • **SWENSON** EVRGH Gas Powered Hydraulic Power Pack • **SWENSON** LSSHV-SS Pre-Wet Spray System, (2) 135 gallon tanks • **SNOWEX** PWS-175 75 Gallon Pre-Wetting/Anti Icing Sprayer System



SWENSON 1,000 GALLON BRINE SPRAY SYSTEM - UNUSED

Dump Body Tailgate Spreaders (UNUSED):

SWENSON STCC Under Tailgate Hydraulic Cross Conveyor Spreader 14" rubber conveyor, 102" wide, and tail light package • (5) **SWENSON** SBD-9S, Stainless Steel Hydraulic, 96" length • **SWENSON** SAG-SS Stainless Steel Hydraulic, 96" length • (4) **SWENSON** SAG Steel Hydraulic, 96" length • (2) **SWENSON** SIDS 304SS Stainless Steel, 96" length • **SNOWEX** SP-2200 V-Maxx Poly Electric, 96" length • (2) **SNOWEX** SP-2400 V-Maxx Poly Electric, 84" length



(2) OF (12) SWENSON TAILGATE SPREADERS - UNUSED



SWENSON STCC TAILGATE CONVEYOR SPREADER - UNUSED

Bumper Hitch Mount Poly Spreaders (UNUSED):

SNOWEX SP-1075 Pivot-Pro, 10.75 cu ft • (2) **SNOWEX** SP-575 Mini-Pro, 5.75 cu ft • (3) **SNOWEX** SP-325 Junior, 3.25 cu ft • (5) **SNOWEX** SR-110 Wireless, 3.0 cu ft

SNOWEX and SWENSON Parts To Include: Spinner Trans • Vibrator Motor • Wiring Harnesses • Speed Controllers • Replacement Augers • Gear Drives • Mounting Brackets; Plus More!

LANDSCAPE AND HARDSCAPE EQUIPMENT

Masonry Brick/Block Saws:

HUSQVARNA TS510, elect, 5HP, with stand (UNUSED) • (2) **HUSQVARNA** TS355, Honda gas, table mount (One UNUSED) • **TARGET** PS1455, Honda 5.5HP, table mount



(2) OF (5) MASONRY BRICK-BLOCK SAWS



(2) UNUSED OF (5) BANDIT HB20SP

Stump Grinders: (3) 2010 **BANDIT** HB20SP Walk-Behind, Kohler 27HP, hydrostatic (UNUSED and Used) • 2009 **BANDIT** HB20SP Walk-Behind, Kohler 27HP, hydrostatic • 2008 **BANDIT** HB20SP Walk-Behind, Kohler 27HP, hydrostatic

Sod Cutters: (3) 2010 **RYAN JR** Walk-Behind Sod Cutters, 18" Cut, Honda GS160, self propelled (UNUSED)

UNUSED STIHL Landscape Tools; String Trimmers; Chain Saws; Hedge Clippers



3 OF 10 RYAN JR SOD CUTTERS - UNUSED

PIGGYBACK FORKLIFTS AND ATTACHMENTS

2006 PALFINGER Craylor CR55 5,500# Piggyback Forklift, s/n 100022105, powered by Deutz diesel engine and hydrostatic transmission, equipped with 122" 2-stage mast, front stabilizers, 48" forks, power sideshift, FOPS post, and 31x15.50x15 tires. In very good condition with very good tires. (0,020 Hours)

2005 PALFINGER Craylor CR50 Palreach 5,000# Piggyback Forklift, s/n 100020432, powered by Deutz diesel engine and hydrostatic transmission, equipped with 122" 2-stage mast, front stabilizers, 48" forks, 45" scissors fork extension, power sideshift, FOPS post, and 31x15.50x15 tires. In good to very good condition with good tires. (0,399 Hours)

2003 PALFINGER Craylor CR50 5,000# Piggyback Forklift, s/n 941920, powered by Deutz diesel engine and hydrostatic transmission, equipped with 122" 2-stage mast, front stabilizers, 48" forks, power sideshift, FOPS post, and 31x15.50x15 tires. In good condition with good tires. (0,239 Hours)

Forklift Attachments: Fork Rotator • Truss Boom • Fork Extensions



(2) OF (3) PALFINGER PIGGYBACKS

ROUGH TERRAIN CRANE AND BLOCK UN-LOADERS



GROVE RT59 15 Ton Cab Down Rough Terrain Crane, s/n 18559, powered by Detroit 4-53 diesel engine and powershift transmission, equipped with 24' to 60' 3-section boom, 2-sheave hook block, single hoist, 4-wheel steer, and 16.00x24 tires. In fair to good condition with good tires.

GROVE RT59 15 TON

2005 STEELMASTER 120-25TC 3-Stage Telescopic Brick/Block Boom Un-Loader, s/n 5250-51683 14'-26' 3-stage hydraulic telescopic boom, 10,000# capacity @ 14', continuous rotation, automatic constant hook level, and (2) hydraulic stabilizers. In good condition. **(Unused/Un-Mounted-For Behind Cab Mount)**

2005 STEELMASTER 6000-25TC 3-Stage Telescopic Brick/Block Boom Un-Loader, s/n 222051664 3-stage hydraulic telescopic boom, 6,000# capacity @ 20', 5,000# @ 26', 430° limited rotation, automatic constant hook level, and (2) hydraulic stabilizers. In good condition. **(Unused/Un-Mounted-For Rear Truck Body Mount)**



STEELMASTER BLOCK UN-LOADERS

AERIAL LIFTS AND SCISSORS LIFTS

1998 GROVE AMZ51XT 45' Aerial Lift, s/n 46901, powered by Ford dual fuel gas/LP engine and hydrostatic transmission, equipped with 4WD, 45' articulated boom, 500# 2-man rotating basket, and 12x16.5 tires. In good condition with good tires. (1,695 Hours)



'98 GROVE AMZ51XT

2000 JLG 40E 40' Electric Aerial Lift, s/n 300057500, equipped with 40' articulated boom, 500# rotating basket, on-board charger, and non-marking solid tires. In good condition with good tires. (1,170 Hours)



'00 JLG 40E

1987 SNORKEL UNO-33 33' Electric Aerial Lift, s/n 87161187, powered by 48 volt electric motor, equipped with articulated boom, 32'8" platform height, 500# platform capacity, rotating basket, on-board charger, and 10x16.5 tires. In fair condition with fair tires. (1,755 Hours) (Not Operating-Bad Batteries)

2001 JLG 1932E2 19' Electric Scissors Lift, s/n 200101794, equipped with 19' platform height, 25' working height, 32" wide extending platform, 500# capacity, and on-board charger. In good condition.

2001 JLG 1932E2 19' Scissors Lift, s/n 200093528, equipped with 19' platform height, 25' working height, 32" wide extending platform, 500# capacity, and on-board charger. In good condition.

COMBO TRENCHER/BACKHOES AND TRENCH COMPACTOR

2002 CASE 460

Combination Trencher/Backhoe, s/n JAF0348262, powered by Kubota 35HP diesel engine and hydrostatic transmission, equipped with Case D100 backhoe attachment with outriggers, 5' trencher bar with dirt chain, 60" 6-way backfill blade, 4-wheel drive, 4-wheel steer, ROPS post, and 26x12-12 tires. In good condition with good tires. (1,239 Hours)



'02 AND '01 CASE 460

2001 CASE 460 Combination Trencher/Backhoe, s/n JAF0348248, powered by Kubota 35HP diesel engine and hydrostatic transmission, equipped with Case D100 backhoe attachment with outriggers, 5' trencher bar with dirt chain, 60" 6-way backfill blade, 4-wheel drive, 4-wheel steer, ROPS post, and 26x12-12 tires. In good condition with good tires. (0,950 Hours)



'04 BOMAG BMP851

2004 BOMAG BMP851 Vibratory Trench Compactor, s/n 101720041304, powered by Hatz diesel engine and hydrostatic transmission, equipped with 33" padfoot drums (24" drums with 9" bolt-on extensions) and radio remote. In good condition with good tires. (0,461 Hours)

WALK-BEHIND TRENCHERS AND ROLLERS



(2) '10 AND '04 VERMEER RT-200

2010 VERMEER RT-200 Walk Behind Trencher, s/n 1VRX081FXA1001622, powered by Kohler 23HP gas engine and hydrostatic transmission, equipped with 36"x6" trencher bar and rock chain. In very good condition. (52 Hours)

2004 VERMEER RT-200 Walk Behind Trencher, s/n 1VRX081F941000496, powered by Kohler 23HP gas engine and hydrostatic transmission, equipped with 36"x6" trencher bar and rock chain. In good condition. (357 Hours)

2007 DITCH WITCH 1820 Walk Behind Trencher, s/n CMW182HEH70000877, powered by Honda 18HP gas engine and hydrostatic transmission, equipped with 36"x6" trencher bar and rock chain. In good condition. (226 Hours)



'07 DITCH WITCH 1820 AND 1030

2007 DITCH WITCH 1030 Walk Behind Trencher, s/n CMW1030HC70000911, powered by Honda 18HP gas engine and hydrostatic transmission, equipped with 24"x4" trencher bar and rock chain. In good condition.

2007 DITCH WITCH 1030 Walk Behind Trencher, s/n CMW1030HT70000983, powered by Honda 18HP gas engine and hydrostatic transmission, equipped with 24"x4" trencher bar and rock chain. In good condition.

2004 BOMAG BW65S-2 Walk-Behind Vibratory Roller, s/n 101100012041, powered by Hatz diesel engine, equipped with 25.5" smooth drum and water system. In good condition.

2004 BOMAG BW65S-2 Walk-Behind Vibratory Roller, s/n 101100012040, powered by Hatz diesel engine, equipped with 25.5" smooth drum and water system. In good condition.



'04 BOMAG BW65S-2

CONCRETE EQUIPMENT



UNUSED STONE MIXERS

Concrete Saws: HUSQVARNA FS3500G 26", 35HP gas, hydrostatic
 • **STONE** CSP3 20 20", 20HP gas, hydrostatic
 • (2) **TARGET** ECII 24H 20", Honda 24HP, hydrostatic
 • (5) **HUSQVARNA** FS 513 18", Honda 13HP, hydrostatic (Some UNUSED)
 • **TARGET** PACIV 18", Honda 13HP, hydrostatic
 • (2) **TARGET** PC18 18", Honda 13HP
 • **2010 EDCO** SK14 14", Honda 13HP (UNUSED)
 • **HUSQVARNA** FS309 14", Honda 9HP
 • (2) **STONE** CS1 14 14", Honda 13HP
 • **PLUS** Qty of **UNUSED** and Used Diamond Saw Blades (various sizes)



(4) OF (16) CONCRETE SAWS



UNUSED HUSQVARNA FS513

Concrete Core Drills with Vacuum Pumps and Stands: DEWALT DW195
 • DEWALT DW194 • MILWAUKEE 4096 • **BLACK & DECKER** 748 • DEWALT • (2) MILWAUKEE • **PLUS** Qty of **UNUSED** and Used Diamond Core Drill Bits (various sizes)



CONCRETE CORE DRILLS

Concrete Floor Grinders and Planers: EDCO 2GC-11H Floor Grinder, Honda gas • (3) **EDCO** 2EC Floor Grinder, electric • **BARTELL** SP8-G Planer, Robin gas • **EDCO** CPTX11R Planer, B&S 9HP
Power Trowels: **BARTELL** B446 46", Honda 9HP • **STOW** 46" Power Trowel, Honda 9HP • **STOW** 36", Honda 8HP

PUMPS



MULTIQUIP 6 INCH DIESEL TRASH PUMP

WB20X 2" Centrifugal Pump, gas • **STOW** CP210H 2" Centrifugal Pump, gas • (6) **MULTIQUIP** ST-2037 2" Submersible Pumps, elect, 2/3HP (UNUSED)

MULTIQUIP MQ62TDD 6" Portable Trash Pump s/n 62TDD-9761, powered by Deutz diesel engine, equipped with 28 gallon fuel tank and 175/80D13 tires. In good condition with good tires.

MULTIQUIP PQP40TH 4" Trash Pump
 • **HOMELITE** HTP3 3" Trash Pump
 • **WACKER** PD3 3" Diaphragm Pump
 • (2) **HONDA** WT20X 2" Trash Pump • **HOMELITE** 121TP2 2" Diaphragm Pump • **HOMELITE** HTP2 2" Trash Pump • **HONDA**

EQUIPMENT ATTACHMENTS



(1) OF (2) BACKHOE ATTACHMENTS - UNUSED

Utility Tractor and 3-Point Hitch: **WOODS** BH80X Backhoe Attachment, 8' reach, 16" bucket with mechanical thumb, operators seat, and outriggers (UNUSED) • **NEW HOLLAND** 910GH Backhoe Attachment, 12" bucket, outriggers, frame mount (UNUSED) • **US MOWER** FM270A Front Mount Knuckleboom Mower (No Mower Deck) • (2) **WOODS** BSE4 4' Box Scraper, with scarifier kit (UNUSED) • **LANDPRIDE** PD25 Post Hole Digger (UNUSED) • **LANDPRIDE** PD15 Post Hole Digger (UNUSED) • **LANDPRIDE** (2) 18" & 12" Auger Bits (UNUSED) • **FFC** LAF3505 Soil Preparator • **WOODS** LRC60 60' Landscape Rake • Tires with Rims (UNUSED)
Loader, Excavator, and Skid Steer: 4-In-1 Buckets • GP Loader Buckets • Moldboard Blades • Fork Attachments • Quick Couplers • Various Size Digging Buckets

GENERATORS AND REPLACEMENT ENGINES

1999 ONAN Model 100DGB, 100KW Portable Generator, powered by diesel engine, multi-tap voltage, mounted on trailer (no enclosure). In good operating condition.

1998 GENERAC Model 98A02949-S, 100KW Skid Mounted Generator, natural gas, 120/208 volt AC, 3-phase. In good condition (165 Hours)

1973 ONAN Model 150RDJC, 15KW Skid Mounted Generator, powered by diesel engine, 120/240 volt AC, single phase, automatic transfer switch, 40 gallon fuel tank. In good condition (191 Hours)

(2) **MITSUBISHI Turbo Charged Diesel Engine Power Units (One UN-USED with Zero Hours)** (One with 15 Hours, Rear Main Seal Leak)

(3) **OMNI METRIX Generator Monitoring Systems**, 22-light, remote

PERSONNEL LIFT, WAREHOUSE STOCK PICKERS, AND MATERIAL LIFTS

2007 GENIE IWP20S-DC 20' Electric Personnel Lift, 300# capacity s/n IWP07-7531 (UNUSED)



GENIE MATERIAL LIFTS - UNUSED

(3) OF (7) JLG STOCK PICKERS - UNUSED



Electric Stock Pickers (UNUSED): (6) **JLG** 15SP 15' • (1) **JLG** 12SP 12' **Hand Crank Material Lifts (UNUSED):** (5) **GENIE** SLC24, 24', 650# capacity • (5) **GENIE** SLC18, 18', 650# capacity • (3) **GENIE** GL-12, 12', 650# capacity • **GENIE** GL-10, 10', 350# capacity (Used) • **GENIE** HL4.5, 4.5', 650# capacity (Used)

HEATERS AND FANS



FROST FIGHTER 500,000 BTU HEATERS

(2) **2008 FROST FIGHTER** IDF500 Indirect Fired 500,000 BTU Oil Fired Heating Units
 • **GROUND SPECIALTIES THAW DAWG** 18"x54" Ground Thaw Heater, propane • (5) **SURE FLAME** FN-20 20" Air Mover Floor Fan, 5,000 CFM • **NATIONAL RIVERSIDE** 150FAS Torpedo Heater

CONTRACTORS TOOLS

RIDGID 1224 Pipe Threader, 1/2"-4", with stand • **RIDGID** 700 Pipe Threader Power Drive • **RIDGID** R12 Pipe Threader Dies • (4) **BOMAG** BT60/4 Foot Compactors • (4) **JET** 206 Pneumatic Backfill Tampers • (2) **APT** 5240 90# Pneumatic Breakers • **APT** 5235 60# Pneumatic Breaker • **APT** 17529 Pneumatic Chipping Hammer • **JET** CD30 Pneumatic Clay Digger • Rotary Hammer Drills • Demo Saws • 9" Grinders • Manhole Blower • **SCOTLAND** GA72CD Digital Magnetic Locator



RIDGID 1224 PIPE THREADER



BOMAG FOOT COMPACTORS