

# ABSOLUTE AUCTION

## COMPLETE LOCATION LIQUIDATION



**WEDNESDAY, JUNE 6, 2012 - 9:00AM**

CAT 980C  
AND CAT 769C

**Wattsburg, Pennsylvania (Erie Area)**



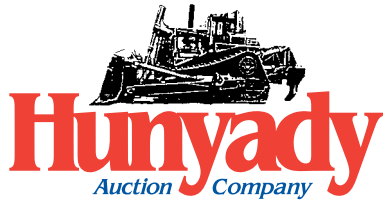
'95 EXTEC 5000



'94 KOLBERG SAND SORT



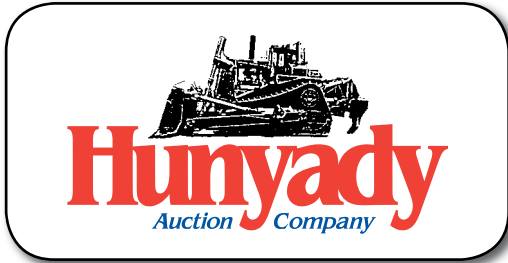
'94 CAT 980F



1440 COWPATH RD. • HATFIELD, PA 19440  
215/361-9099 • Fax: 215/361-9212  
[www.hunyady.com](http://www.hunyady.com)

PRE-SORTED  
FIRST CLASS MAIL  
US POSTAGE  
**PAID**  
HAVERTOWN, PA  
PERMIT #45





**Notice:** Lakeland Aggregates has exhausted all mineable reserves at this location and has decided to liquidate all equipment and plant. All items will sell at absolute auction regardless of price and without minimums, reserves, or buyer's premiums!

**Dismantlement:** Lakeland Aggregates will dismantle and loadout all components of the plant at no charge to the buyer. Items will be taken down in a practical sequence and loaded on a first come, first served basis.

**Location:** The auction will be held at Lakeland's quarry facility at 13053 Route 89 Wattsburg, Pennsylvania 16442

**Sale Site Directions:** FROM INTERSTATE 90: Exit #29. Follow Route 8 South (11.4) miles to Route 89. Turn left and follow Route 89 (0.8) miles to auction site.

**FROM INTERSTATE 86:** Exit #3. Follow route 89 South (6.3) miles to auction site.

**Terms:** Payment in full is required on sale day by cash, certified funds, or check with a bank letter of guarantee. Sample letter of guarantee: "We hereby guarantee the payment of our customer \_\_\_\_\_ written on his account up to \_\_\_\_\_ dollars for purchases at your auction sale on June 6, 2012." All guaranteed checks should be made payable to Hunyady Auction Co.

**Online Bidding:** Live internet bidding will be provided by Proxibid. Proxibid will require a 2.5% internet provider service fee (capped at \$750) that will be charged for each item purchased online. All interested internet bidders are required to register with Proxibid 24 hours prior to the auction at [www.proxibid.com/hunyady](http://www.proxibid.com/hunyady) or call 877-505-7770

**Sales Tax:** Since this contractor is selling items not normally sold in the course of his business, the Commonwealth of Pennsylvania considers this an isolated sale and does not require the auction company to collect sales tax.

**Financing:** Financing is available, please contact Susan (215) 361-9099 at the auction company for details.

**Inspection:** Items will be available for inspection beginning one week prior to the auction from 8:00AM to 5:00PM. The site will be closed Saturday and Sunday, June 2nd and 3rd.

**Removal:** After complete payment, all sale items may be removed on sale day as long as the removal activity is not disruptive to the sale and only until 5:00 p.m. Items may also be removed Thursday and Friday, June 7th and 8th, and Monday thru Wednesday, June 11th thru June 13th, from 8:00 a.m. to 5:00 p.m. All items, with the exception of the plant, must be removed no later than Wednesday, June 13, 2012 at 5:00 p.m.

**Airport Information:** This area is serviced commercially and privately through the Erie International Airport.

**Motel Information:** Quality Inn & Suites, 8040-A Perry Highway, Erie, PA, 16509 (814) 864-4911 (Auction Headquarters) • La Quinta Inn & Suites, 7820 Perry Hwy, Erie, PA 16509 (814) 864-1812 • Courtyard Marriott, 7792 Peach St., Erie, PA 16509 (814) 860-8300 • Hilton Garden 2225 Downs Drive, Erie, PA 16509 (814) 866-1390

**Auction Manager:** Kevin Wheeler

## Sale Site Phone: (267) 446-3808 • Sale Site Fax: (888) 859-8958

### GENERATOR AND SLURRY/WATER PUMPS AND POWER UNIT

#### 1997 CATERPILLAR Model 3412, 455KW

Generator, s/n SNA10799, powered by Cat 3412 diesel engine, s/n 81Z21095, 480 Volt, 680 amp, skid mounted with radiator, enclosed in 20' insulated over sea container. In good condition.

**DELAVAL 8"x10" Centrifugal Pump,** powered by 125HP electric motor, mounted on 6'x13" platform and 11'x20" suction head float platform, and starter panel. In good condition.

**ASH Model C-6-5, 8"x8" Centrifugal Pump,** s/n 7297VH, 75HP electric motor. In good condition. (With Settling Tank)

**ASH 6"x7" Rubber Lined Centrifugal Pump,** powered by 50HP electric motor with starter box. In good condition.

**DETROIT 6-71 Twin Motor Power Unit** (2 motors 1 shaft) (1 Engine Rebuilt)



CAT 455KW



DELAVAL 8" X 10"

### FUEL TANKS, PARTS, TOOLS, AND MISCELLANEOUS

10,000 Gallon Skid Mounted Tank, electric pump. In good condition • 2,500 Gallon Skid Mounted Fuel Tank, with 110 volt electric pump. In good condition • **FORNEY** PL326 Lab Oven • **HUMBOLDT** Sieve Shaker

**Plant Parts Including:** Conveyor Belt • Screen Fabric

• Electric Motors • Pump Packing • Gear Reducers

• Pump Parts • Electrical Starter • Control Panels

• Belts • Sheaves • Sprocket • Bushings • **WESTING-**

**HOUSE 100HP Electric Motor, 3-phase • US 75HP Electric Motor Frame 405T**

**GE 100HP Electric Motor Frame 404T • Hose • Racks**

Miscellaneous Storage Containers • Lincoln SA300 Welder, gas • Miscellaneous Equipment and Truck Parts, Filters, Bearings, Tires, etc • Miscellaneous Shop Tools • Lubricants • Rigging Supplies • (200' +/-) 6" Steel Pipe • Office Desks, chairs, and cabinets



# ABSOLUTE AUCTION

## RUBBER TIRED LOADERS



'94 CAT 980F

**1994 CATERPILLAR Model 980F Rubber Tired Loader**, s/n 8CJ01366, powered by Cat 3406 diesel engine and powershift transmission, equipped with general purpose loader bucket with teeth, ROPS over enclosed cab with air conditioning, joystick controls, and 29.5R25 tires. In good condition with very good tires.



'87 CAT 980C

**1987 CATERPILLAR Model 980C Rubber Tired Loader**, s/n 63X07824, powered by Cat 3406 diesel engine and powershift transmission, equipped with general purpose loader bucket with bolt-on cutting edge, ROPS over enclosed cab, light package, air conditioning, and 26.5x25 tires. In good condition with good tires.



'89 CAT 980C

**1989 CATERPILLAR Model 980C Rubber Tired Loader**, s/n 63X09034, powered by Cat 3406 diesel engine and powershift transmission, equipped with general purpose loader bucket with teeth, ROPS over enclosed cab, light package, air conditioning, and 29.5x29 tires. In good condition with good tires.

**TEREX Model 70C Rubber Tired Loader**, s/n 73041, powered by Detroit 6V-71 diesel engine and powershift transmission, equipped with general purpose loader bucket with bolt-on cutting edge, enclosed ROPS cab, and 23.5x25 tires. In fair condition with fair tires.

TEREX 70C



## HAUL TRUCK



'81 CAT 769C

**CATERPILLAR Model 769C Haul Truck**, s/n 01X02319, powered by Cat 3408DITA diesel engine and powershift transmission, equipped with heated dump body, steel liner, supplemental steering, retarder, air conditioning, light package, and 18.00x33 tires. In good condition with good tires.

## CRAWLER TRACTOR



'88 CASE 1550

**1988 CASE Model 1550 Crawler Tractor**, s/n JAK0010567, powered by Case 6 cylinder diesel engine and powershift transmission, equipped with straight blade with tilt, multi-shank ripper, ROPS canopy with sweeps, and 24" SBG pads. In good condition with good undercarriage. (Rebuilt Transmission-New Cutting Edge)

## SKID STEER LOADER AND FORKLIFT



'90 BOBCAT

**1990 BOBCAT Model 753 Skid Steer Loader**, s/n 508611600, powered by 4 cylinder diesel engine and hydrostatic transmission, equipped with 60" general purpose loader bucket, ROPS canopy, auxiliary hydraulics, and 10.00x16.5 tires. In fair to good condition with fair tires.



'95 TOYOTA

**1995 TOYOTA Model 02-5FG30, 5,800# Solid Tired Forklift**, s/n 76073, powered by 4 cylinder gas engine and shuttle transmission, equipped with 169" 3-stage mast, side shift, 42" forks, ROPS canopy, and light package. In fair to good condition with fair to good tires.

## TRUCK CRANE



GROVE 15 TON

**GROVE Model TD150, 15 Ton Hydraulic Truck Crane**, s/n 672106, equipped with 3-section 24' to 60' telescopic boom, 20' A-frame folding jib, 3-sheave hook block, mounted on 6x6 carrier, powered by Mack 6 cylinder diesel engine and 3 speed transmission with 2 speed auxiliary, (4) hydraulic outriggers, and 10.00x20 tires. In fair condition with fair tires.

## PORTABLE SCREENING PLANT



'95 EXTEC 5000

**1995 EXTEC Model 5000 Portable Screening Plant**, s/n 4028, powered by Deutz 4 cylinder diesel engine, equipped with 6'x12' feed hopper, hydraulic grizzly, 40"x34' feed conveyor, 4'6"x6'4" double deck screen, (2) 27"x32' folding side discharge conveyors, and 385/65R22.5 tires. In good condition with good tires.

## TAG-A-LONG TRAILER AND TRENCH/STONE BOXES



'92 ECONOLINE 12 TON



GME BOXES

**1992 ECONOLINE 12 Ton Tag-A-Long Trailer**, 102" wide, 22' level deck, 5' beavertail, 5' ramps, and 8.00x14.5 tires. In good condition with good tires.

**1999 GME Model E816SP, 8'x16' Trench Box**, s/n 99121824-2, with 7"x30" spreaders, 965 psf capacity

**1999 GME Model BS5 5 Cubic Yard Stone Box**, s/n 1063

## SAND CLASSIFIER AND WASH PLANT



**1994 KOLBERG Model Sand Sort Spec Select III**, 5044-32T Twin Screw Portable Sand Classifier, equipped with 7000 series 8'x32' sand sort tank with (9) stations, re-circulating pump, and rising current (classifier s/n 76-7308-32-94P-SSIII), twin 44" sand screws (screw s/n 560-5044-32-94T), Allen Bradley PLC, 480 volt main disconnect, mounted on model 7308-32P tri-axle carrier with (8) screw type stabilizers and 11R22.5 tires. In good to very good condition with good tires. (Purchased New At ConAg Trade Show in 1994 and Enclosed In A Building Since That Time)



**(Screen #3) EAGLE Model BMD5441, 36" Portable Sand Screw**, s/n 5065, 36" screw, 10HP electric motor, Eagle gear reducer, equipped with Diester 5'x14' 3-deck

**'94 KOLBERG SAND SORT** inclined vibrating wet screen, powered by 10HP electric motor, with water manifold and spray bars, mounted on tandem axle carrier with 10.00x20 tires. In fair to good condition with fair tires.



PORTABLE WET SCREEN AND SCREW

## CRUSHERS AND FEEDERS



EAGLE CRUSHER AND ARMADILLO FEEDER

**Crushing Tower Including: 11'x13' Feed Hopper**, (Feed #2) ARMADILLO 44"x16' Vibrating Grizzly Feeder (6' bars) powered by 30HP electric motor, EAGLE 22"x36" Jaw Crusher powered by 50HP electric motor with starter box, (Conveyor #4) 36"x50' Channel Under Crusher Discharge Conveyor, 5HP and Barber Greene gear reducer, mounted on structural steel support. In good condition. (To Be Sold As A Unit) **(Feed #1) Shopmade 10'x12' Feed Hopper with grizzly bars**, equipped with 48"x20' belt feeder powered by 10HP electric motor, equipped with hydraulic gate, mounted on structural steel support tower. In fair to good condition.



STEDMAN CAGE MILL

**STEDMAN 42" Cage Mill Crusher**, s/n D1996, powered by 125HP electric motor, mounted on structural steel support tower. In fair condition. (Motor Sold Separately)

**UNIVERSAL Model 1036RBSL Jaw Crusher**, s/n 113X36 (80% remaining life on dies) and 1997 UNIVERSAL Model 40"x24", Star Gear Roll Crusher, s/n 204X36 (80% remaining life on rolls), mounted on tandem axle frame. In fair to good condition.

**SMITH ENGINEERING WORKS Roll Crusher**, s/n 10061

## WET SCREENS



TYLER WET TOWER



6' X 7' SLURRY PUMP

**(Screen #1) 1993 TYLER Ty Rocket 5'x16' 3-Deck Inclined Vibrating Wet Screen**, s/n 50-3365, powered by 25HP electric motor, equipped with water manifold and spray bars, mounted on structural steel support tower with collecting tank. In good condition.

**(Screen #2) SECO Model 2516, 5'x10' Horizontal Vibrating Wet 2-Deck Screen**, s/n FS-324, 30HP electric motor, FS-178 screen, water manifold and spray bars. In good condition.



SECO SCREEN

## RADIAL STACKERS



CONVEYOR #16

**(Conveyor #12) 36"x120' Radial Stacker**, 20HP electric motor, gear reducer, oscillating wheels, swivel plate, catwalk, manual raise and lower, and 11.00x20 tires. In good condition with fair tires.

**(Conveyor #16) SUPREME Model 30105, 30"x105' Radial Stacker**, s/n 493001, 20HP electric motor, Dodge 42 gear reducer, oscillating wheels, swivel plate, catwalk, manual raise and lower, and 11.00x22.5 tires. In good condition with fair tires.

**(Conveyor #11) GRASAN 24"x95' Radial Stacker**, 20HP electric motor, gear reducer, oscillating wheels, swivel plate, catwalk, manual raise and lower, and 9.00x20 tires. In good condition with fair tires.

**(Conveyor #14) SMALIS 24"x60' Radial Stacker**, 10HP electric motor, Dodge TXT3 gear reducer, oscillating wheels, swivel plate, catwalk, manual raise and lower. In good condition. With good tires.



CONVEYORS #12 AND #11

## OVERLAND CONVEYOR

**(Conveyor #10) 18"x193' Channel Overland Conveyor**, gravity take-up, 15HP electric motor, Dodge TXT4 gear reducer. In good condition.

**(Conveyor #9) 24"x235' Channel Overland Conveyor**, 10HP electric motor, Browning Gear reducer, gravity take-up. In good condition.

## MOTOR CONTROL CENTER

**SQUARE D Main Disconnect with (3) thermal magnetic circuit breakers**, Westinghouse JF auto starter, (20) size 0 and size 1 with soft starts, and (5) Square D disconnects

## CONVEYORS



CONVEYOR #6 WITH SCALE

**(Conveyor #2) 30"x205' Lattice Conveyor**, 20HP electric motor, Dodge TXT6A gear reducer. In good condition.

**(Conveyor #3) 28"x170' Lattice Conveyor**, gravity take-up, catwalk, 20HP electric motor, Dodge TXT7 gear reducer. In good condition.

**(Conveyor #15) 30"x160' Lattice Conveyor**, gravity take-up, 20HP electric motor, gear reducer, covers. In good condition.

**(Conveyor #6) KOLBERG Model 330-100, 30"x100' Lattice Conveyor**, s/n 1330-100-71, CMI belt scale system, catwalk, 10HP electric motor, Dodge TDT5 gear reducer. In good condition.

**(Conveyor #5) KOLBERG 30"x78' Channel Conveyor**, 5HP electric motor, Browning gear reducer. In good condition.

**(Conveyor #8) CEC 24"x60' Channel Conveyor**, 10HP electric motor, Browning #3 gear reducer. In good condition.

**(Conveyor #7) 21"x60' Channel Conveyor**, 7.5HP electric motor, Dodge gear reducer. In fair to good condition.

**(Conveyor #1) 28"x50' Lattice Conveyor**, 7.5HP electric motor, Dodge TXT3 gear reducer. In good condition.

**(Conveyor #13) 24"x40' Channel Conveyor**, 10HP electric motor, Dodge TXT3 gear reducer. In good condition.

**DIAMOND 18"x50' Lattice Conveyor** (No Power - On Ground)