



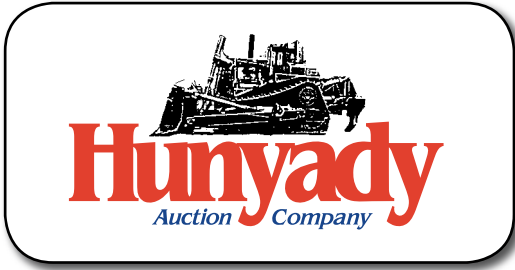
'04 JOHN DEERE 624J



'13 TAKEUCHI TL250 AND '06 TL140



'05 KOMATSU D61EX-15



1440 COWPATH RD. • HATFIELD, PA 19440  
215/361-9099 • Fax: 215/361-9212  
www.hunyady.com

PRE-SORTED  
FIRST CLASS MAIL  
US POSTAGE  
**PAID**  
HAVERTOWN, PA  
PERMIT #45



# ABSOLUTE AUCTION

## SURPLUS EQUIPMENT LIQUIDATION



Greenland Construction, Inc.  
Water & Wastewater Construction Specialists

**WED, MAY 7, 2014**  
**9:00AM**



'11 PC490LC-10 AND  
'07 PC300LC-7EO

**Clearfield, Pennsylvania (Central PA)**

# ABSOLUTE AUCTION



**Notice:** Greenland Construction, Inc., a well respected sewer and water contractor, has determined certain assets to be surplus to their 2014 construction season. All equipment is owned by Greenland Construction, Inc. and will positively sell to the highest bidder without minimums, reserves or buyers premiums.

**Location:** The auction will be held at the Greenland Construction facility, located in the Target Square Plaza at 8908 Clearfield Curwensville Highway, Clearfield, PA 16803

**GPS Navigation:** 8908 Clearfield Curwensville Highway (Route 879 West) Clearfield, PA 16830

**Sale Site Directions: FROM INTERSTATE 80:** Exit #120 (Clearfield/PA Route 879). Proceed to PA Route 879 WEST. Follow (4.3) miles and turn Left at traffic light, which is still Route 879 West. Continue another (1.5) miles to Sale Site on Left, which is located in the Target Square Plaza.

**FROM US ROUTE 322:** Exit Route 322 onto Route 879 WEST toward Curwensville. Follow Rt. 879 West (3.0) miles and turn Left at traffic light, which is still Route 879 West. Continue another (1.5) miles to Sale Site on Left, which is located in the Target Square Plaza.

**Online Bidding:** Live internet bidding will be provided by Proxibid. Proxibid will require a 2.5% internet provider service fee (capped at \$750) that will be charged for each item purchased online. All interested internet bidders are required to register with Proxibid 24 hours prior to the auction at [www.proxibid.com/hunyady](http://www.proxibid.com/hunyady) or call 877-505-7770

**Terms:** Payment in full is required on sale day by cash, certified funds, or check with a bank letter of guarantee. Sample letter of guarantee: "We hereby guarantee the payment of our customer \_\_\_\_\_ written on his account up to \_\_\_\_\_ dollars for purchases at your auction sale on May 7, 2014" All guaranteed checks should be made payable to Hunyady Auction Co.

**Sales Tax:** Since this contractor is selling items not normally sold in the course of his business, the Commonwealth of Pennsylvania considers this an isolated sale and does not require the auction company to collect sales tax.

**Financing:** Financing is available, please contact Susan (215) 361-9099 at the auction company for details.

**Inspection:** Items will be available for inspection beginning one week prior to the auction from 8:00AM to 4:00PM, or sale day morning beginning at 7:00AM. The site will be closed Saturday and Sunday, May 3rd and 4th

**Removal:** After complete payment, all sale items may be removed on sale day as long as the removal activity is not disruptive to the sale and only until 5:00PM. Items may also be removed Thursday and Friday, May 8th and 9th and Monday thru Wednesday, May 12th thru May 14th, from 8:00AM until 4:00PM. All items must be removed no later than Wednesday, May 14, 2014 at 4:00PM

**Airport Information:** The area is serviced commercially through Pittsburgh International Airport and privately through Clearfield-Lawrence Airport (KFIG) 814-768-7710

**Motel Information:** Hampton Inn, 1777 Industrial Park Road, Clearfield, PA 16830, (814) 765-8300 • Comfort Inn, 1821 Industrial Park Road, Clearfield, PA 16830, (814) 768-6400 • Holiday Inn Express Hotel & Suites, 1625 Industrial Park Road, Clearfield, PA 16830, (814) 768-7500 • Days Inn, 150 Hotel Heights, Clearfield, PA 16830, (814) 765-2441

**Sale Site Phone: (267) 446-3808 (Beginning April 28th) • Sale Site Fax: (888) 859-8958**

**WED, MAY 7, 2014  
9:00AM**



**Clearfield,  
Pennsylvania  
(Central PA)**

**Complete Photo Library Available!  
Please visit our website:  
[www.hunyady.com](http://www.hunyady.com)**



**Target Square Plaza  
8908 Clearfield Curwensville Highway, Clearfield, PA 16803**

## HYDRAULIC EXCAVATORS AND ATTACHMENTS



'11 KOMATSU PC490LC-10

**2011 KOMATSU PC490LC-10**, s/n A40037, powered by Komatsu diesel engine, equipped with 13'1" dipper stick with hydraulic coupler, Esco 54" digging bucket, hydraulic coupler, backup camera, air conditioning, and 35.5" TBG pads. In very good condition with very good undercarriage. **(2,518 Hours) (Purchased New)**



'07 KOMATSU PC300LC-7EO

**2007 KOMATSU PC300LC-7EO**, s/n A88938, powered by Komatsu diesel engine, equipped with 10'6" dipper stick with hydraulic beyond and JRB hydraulic coupler, Esco 54" digging bucket, air conditioning, and 33.5" TBG pads. In good condition with good undercarriage. **(5,135 Hours)**



'07 KOMATSU PC308USLC-3EO

**2007 KOMATSU PC308USLC-3EO**, s/n 30084, powered by Komatsu diesel engine, equipped with 10' dipper stick with hydraulic beyond and JRB hydraulic coupler, Esco 48" digging bucket, zero swing, air conditioning, and 33.5" TBG pads. In good condition with good undercarriage. **(7,064 Hours) (Purchased New)**



'05 KOMATSU PC308USLC-3

**2005 KOMATSU PC308USLC-3**, s/n 20244, powered by Komatsu diesel engine, equipped with 10' dipper stick with hydraulic beyond and JRB hydraulic coupler, Esco 48" digging bucket, zero swing, air conditioning, and 33.5 TBG pads. In good condition with good undercarriage. **(7,966 Hours) (Purchased New)**



'06 KOMATSU PC160LC-7KA

**2006 KOMATSU PC160LC-7KA**, s/n K41009, powered by Komatsu diesel engine, equipped with 8'6" dipper stick with hydraulic beyond and JRB hydraulic coupler, Esco 24" digging bucket, air conditioning, and 23.5 TBG pads. In good condition with good undercarriage. **(6,848 Hours) (Purchased New)**



'05 KOMATSU PC138USLC-2EO

**PC138USLC-2EO**, s/n 1624, powered by Komatsu diesel engine, equipped with 8' dipper stick with hydraulic beyond and JRB quick coupler, 24" digging bucket with hydraulic thumb attachment, air conditioning, and 20" Road Liner bolt-on street pads. In good condition with good undercarriage. **(4,759 Hours)**

## BUCKETS

**(PC490/450/400): LEADING EDGE 32"**, 3-Tooth Rock Ripping Bucket • **LEADING EDGE 30"** 3-Tooth Rock Ripping Bucket • **ESCO 48"** 2.48 Cubic Yd digging • **ESCO 42"** digging • **HENSLEY 30"** digging

**(PC300): LEADING EDGE 32"** 3-Tooth Rock Ripping Bucket • **FELCO 36"** Hydraulic Compactor Bucket • **ESCO 30"** digging • **(2) ESCO 26"** digging • **72"** Cleanup • **WB Double Shank Frost Tooth** • **Single Shank Frost Tooth**

**(PC308/270/220/228/200): ESCO 26"** digging • **(2) ESCO 24"** digging • **66"** Cleanup • **Asphalt Cutter**



**(1) OF (3) LEADING EDGE ROCK RIPPING BUCKETS**



'05 TRAMAC V56, 12,000 FT LB



'07 BERTI BRUSH MULCHER

**2005 TRAMAC V56 Hydraulic Demolition Hammer**, s/n 164252, equipped with 12,000 ft lb impact energy. In good condition. (Additional Cap For PC400 Mounting will be sold separately) (Purchased In 2009 From Tramac Dealer as a Complete Rebuild) (PC300) **1994 NPK H10XB Hydraulic Demolition Hammer**, s/n 42217, equipped with 3,000 ft lb impact energy. In good condition. (PC308) **2007 BERTI EFX/SB140 Hydraulic Brush Mulcher**, s/n N.32654 (Fits PC300) **ACS Hydraulic Quick Coupler**, with fittings and hardware (PC120/138)

## RUBBER TIRED LOADER, ASPHALT ZIPPER, AND ATTACHMENTS



'04 JOHN DEERE 624J

**2004 JOHN DEERE Model 624J Rubber Tired Loader**, s/n 594193, powered by John Deere diesel engine and powershift transmission, equipped with JRB general purpose bucket, JRB hydraulic coupler, auxiliary hydraulics, ride control, enclosed ROPS cab with air conditioning, and 20.5R25 tires. In good condition with fair to good tires. **(7,296 Hours)** **(Purchased New)**

**2005 ASPHALT ZIPPER Model AZ-480HD Milling Attachment**, s/n 48HD0198, powered by John Deere 6068 diesel engine and Twin Disc PTO, equipped with 48" milling head, spray system, and remote controls, with 2006 Williamson tandem axle transport trailer. In good condition. **(240 Hours)** **(Purchased New)**



'05 ASPHALT ZIPPER AZ-480HD

JRB 60" Fork Attachment (JD 624J)

**MIDLAND Model SA Road Widener Loader Attachment**, s/n 229, Hatz diesel and hydraulic mold board. In fair condition.

## VIBRATORY COMPACTOR AND TRENCH COMPACTOR



'94 IR SD100D

**1994 INGERSOLL RAND Model SD100D Pro Pac Vibratory Compactor**, s/n 10408SBD, powered by Cummins diesel engine and hydrostatic transmission, equipped with 84" smooth drum, drum drive, 2-frequency vibration, ROPS canopy, and 23.1-26 tires. In good condition with good tires. **(4,543 Hours)**

**STONE Model RD-33S Padfoot Trench Compactor**, s/n D221128, powered by Hatz diesel engine, equipped with 34" padfoot drum. In good condition.

diesel engine, equipped with 34" padfoot drum. In good condition.

## HYDRO SEEDER



'09 FINN T60 HYDRO SEEDER (100 HOURS)

**2009 FINN Model T60T-27B Portable Hydro Seeder**, s/n SBA-2226, powered by Kohler 25HP gas engine, equipped with 600 gallon tank, agitator, hose reel with power wind, and topside gun, trailer. In very good condition. **(100 Hours)** **(Purchased New)**

## CRAWLER TRACTOR AND FLEX TRACK DUMPER



'05 KOMATSU D61EX-15

**2005 KOMATSU Model D61EX-15 Crawler Tractor**, s/n B40398, powered by Komatsu diesel engine and hydrostatic transmission, equipped with 6-way straight blade, drawbar, and enclosed ROPS cab with air conditioning. In good condition with good undercarriage. **(6,950 Hours)**

**1991 MOROOKA Model MST2200 Flex Track Dumper**, s/n 22506, powered by Cat 3306 diesel engine and 2 speed hydrostatic transmission, equipped with tailgate and 30" rubber tracks. In good condition with good undercarriage. **(5,385 Hours)**



'91 MOROOKA MST2200

## TRACTOR LOADER EXTEND-A-HOES



'03 JD 410G 4X4 EXTEND-A-HOE

**2003 JOHN DEERE Model 410G, 4x4 Extend-A-Hoe**, s/n 924469, powered by John Deere diesel engine and powershift transmission, equipped with general purpose loader bucket, 24" digging bucket, manual rear coupler, rear hydraulics, ride control, enclosed ROPS cab with air conditioning, 12.5/80-18 front and 21L-24 rear tires. In good condition with fair tires. **(6,324 Hours)** **(Purchased New)**

**1998 JOHN DEERE Model 410E, 4x4 Extend-A-Hoe**, s/n 852086, powered by John Deere diesel engine and shuttle transmission, equipped with general purpose loader bucket, 24" digging bucket, rear hydraulics, enclosed ROPS cab, 12.5/80-18 front and 21L-24 rear tires. In good condition with good tires (new front tires). **(4,752 Hours)** **(Purchased New)**



'98 JD 410E 4X4 EXTEND-A-HOE



'89 CAT 436 4X4 EXTEND-A-HOE

**1989 CATERPILLAR Model 436, 4x4 Extend-A-Hoe**, s/n 5KF00505, powered by Cat diesel engine and shuttle transmission, equipped with general purpose loader bucket, 24" digging bucket, rear hydraulics, enclosed ROPS cab, 10.5-20 front and 16.9-28 rear tires. In good condition with good tires. **(6,453 Hours)** **(Purchased New)**

## SKID STEER LOADERS AND ATTACHMENTS



**13 TAKEUCHI TL250 (MULCHER SOLD SEPARATELY)**

**2013 TAKEUCHI Model TL250 Crawler Skid Steer Loader**, s/n 225001598, powered by Kubota diesel engine and hydrostatic transmission, equipped with 80" general purpose loader bucket, power coupler, hi-flow hydraulics, enclosed ROPS cab with air conditioning, and 18" rubber tracks. In very good condition with very good undercarriage. **(407 Hours) (Purchased New)**

**2006 TAKEUCHI model TL140 Crawler Skid Steer Loader**, s/n 21404094, powered by Isuzu diesel engine and hydrostatic transmission, equipped with 75" general purpose loader bucket with teeth, joystick controls, standard hydraulics, enclosed ROPS cab with air conditioning, and 18" rubber tracks. In good condition with fair undercarriage. **(2,857 Hours) (Purchased New)**



**06 TAKEUCHI TL140**



**03 CASE 60XT (SAW NOT IN AUCTION)**

**2003 CASE Model 60XT Skid Steer Loader**, s/n JAF0367523, powered by Case diesel engine and hydrostatic transmission, equipped with 72" general purpose loader bucket, hi-flow hydraulics, ROPS canopy, and 12-16.5 tires. In good condition with fair tires. **(Purchased New)**

**2010 FAE Model UML/SSL 150, 60" Brush Mulcher**, s/n 10-62. In good condition. (Requires Hi-Flow; 4500PSI @ 41 GPM) (TL250) • (2 Sets) Grouser Steel Tracks • (2) 6-Way Dozer Blades • **LOWE 5' Trencher Attachment**, with rock teeth • **(2) ROCK HOUND 72" Landscape Rakes**

## FORKLIFT AND UTILITY VEHICLE



**CLARK Model C500-YS100, 8,300# Pneumatic Tired Forklift**, s/n Y6851185960, powered by 4 cylinder gas engine and shuttle transmission, equipped with 2-stage 149" mast, power side shift, 48" forks, and FOPS canopy. In good condition with good tires.

**CLARK 8,300#**

**2006 CUB CADET 4x4 Utility Vehicle**, s/n 1E166G40010, powered by Cat diesel engine, equipped with manual dump, roll cage. In good condition with good tires. **(268 Hours)**



**06 CUB CADET 4X4**

## GENERATOR, PUMP, AIR COMPRESSORS, AND ARROWBOARD

**1996 ONAN Model 20DKAE, 20KW Portable Generator**, s/n H940551276, powered by Cummins diesel engine, 20KW/25KVA 3-phase, 480 volt, 13.3KW single phase, 120/240 volt. In good condition.

**WACKER Model PT6LT, 6" Portable Trash Pump**, s/n 717501299, powered by Lombardini diesel engine. In good condition.

**INGERSOLL RAND Model P600W-CU, 600CFM Portable Air Compressor**, s/n Unknown, powered by Cummins B5.9 diesel engine, equipped with 100PSI rated pressure. In good condition.

**1999 INGERSOLL RAND Model P185WJD, 185CFM Portable Air Compressor**, s/n 298610UCJ221, powered by JD diesel engine. In good condition.

**2000 FENEX Model TMAB-15 Portable Solar Arrowboard**



**WACKER PT6LT**

## TRUCK TRACTOR AND LOWBOY TRAILER

**1995 MACK Model CH613 Tandem Axle Truck Tractor**, powered by Mack E7-427 diesel engine and Fuller 8LL transmission, equipped with 44,000# rear and 12,000# front axle, wetline, double frame, air ride suspension, aluminum wheels, and 11R24.5 tires. In good condition with good tires. **(Rebuilt Transmission and Clutch Approximately 10,000 Miles)**

**1988 ROGERS Model CTH35SSF33.7-57-R20RL, 35 Ton Paver Special Lowboy Trailer**, equipped with Paver Special 22'6"x8' main deck, 11'6" deck over wheels, ground bearing, hydraulic detachable, spring suspension, and 255/70R22.5 tires. In good condition with good tires.

**95 MACK CH613 AND 88 ROGERS 35 TON PAVER SPECIAL**



## DUMP TRUCKS



**'87 MACK DM886SX**

**1987 MACK Model DM886SX Tri-Axle Dump Truck**, powered by Mack ENDT285HP diesel engine and Mack extended range 7 speed transmission, equipped with 14' steel dump body, 65,000# rears and 20,000# front axle, triple frame, triple scope hoist, camelback suspension, and 12R24 tires. In fair to good condition with fair to good tires.

**1987 MACK Model DM886SX Tri-Axle Dump Truck**, powered by Mack ENDT285HP diesel engine and Mack extended range 7 speed transmission, equipped with 14' steel dump body, 65,000# rears and 20,000# front axle, triple frame, triple scope hoist, camelback suspension, and 12R24 tires. In fair to good condition with fair to good tires.

**1985 GMC General Tri-Axle Dump Truck**, powered by Cummins NTC350 Big Cam diesel engine and Fuller 8LL transmission, equipped with 16' steel dump body, 40,000# rears and 16,000# front axle. In fair condition with good tires.

**1995 INTERNATIONAL Model 4900 Single Axle Dump Truck**, powered by Int'l DT466 diesel engine and Spicer 7 speed transmission (fresh rebuild), equipped with 10'6" steel dump body, tow package with air, air brakes, air conditioning, and 11R22.5 tires. In fair to good condition with good tires.



**'95 INT'L 4900**



**'85 FORD 8000**

**1985 FORD Model 8000 Single Axle Dump Truck**, powered by Cat 3208 diesel engine and 7 speed transmission, equipped with 10' steel dump body, central hydraulic system, tow package with air, air brakes, and 11R22.5 tires. In good condition with good tires.

## MASON DUMP AND UTILITY TRUCKS



**'95 FORD F-350XL 4X4**

**1995 FORD Model F-350XL, 4x4 Mason Dump Truck**, powered by 7.3L diesel engine and 5 speed transmission, equipped with 8' steel dump body with folding sides, Western 7'6" plow, hydraulic tailgate spreader, central hydraulics, locking hubs, dual rear wheels, and 235/85R16 tires. In good condition with good tires.

**2000 FORD Model F-350XL Super Duty 4x4 Quad Cab Utility Truck**, powered by 7.3L diesel engine and automatic transmission, equipped with 9' enclosed utility body, dual rear wheels, air conditioning, and 235/85R16 tires. In fair to good condition with fair to good tires.



**'00 FORD F-350XL 4X4**

**1995 FORD Model F-450 Super Duty Utility Truck**, powered by Powerstroke 7.3L diesel engine and automatic transmission, equipped with Omaha 9' open utility body, behind cab thru-toolbox, dual fuel tanks, and dual rear wheels. In fair condition with fair tires.

## VACTOR, BUCKET, AND VAN BODY TRUCKS

**1986 FORD Model 8000 Single Axle Vactor Truck**, powered by Cat 3208 diesel engine and 5 speed transmission with 2 speed rear, equipped with Vac Con vactor body with Cummins diesel engine, Gaso vacuum pump, and sewer jetter. In fair to poor condition with fair tires.

**1994 GMC Topkick Bucket Truck**, powered by Cat 3116 diesel engine and automatic transmission, equipped with Holan 805, 46' aerial lift, s/n 94805059, material handling jib with boom tip winch, single man basket, lower boom insert, hydraulic tool outlets, and air brakes. In fair condition with good tires.

**1985 INTERNATIONAL Aluminum Step Van**, powered by Int'l 6.9L diesel engine and 5 speed transmission, equipped with rollup rear door and shelving. In fair condition with fair tires.

**1988 FORD Model F-450 Van Body Truck**, powered by 7.3L diesel engine and 4 speed transmission, equipped with Supreme 16'6" aluminum van body with rear swing doors, dual rear wheels. In fair condition with fair tires.

## TRENCH BOXES AND CONCRETE BUCKETS

8'x24'x6" • (2) 8'x20'x4" • 8'x12'x4" • (2) Concrete Laydown Buckets • **GARBRO** Round Concrete Bucket

## 3-POINT HITCH ATTACHMENTS, CONTRACTORS TOOLS, MATERIAL, AND MISCELLANEOUS

5' Brush Mower, PTO, 3-Point hitch • **YORK** Rake, 3-Point Hitch • (2) Foot Compactors • Plate Compactor • Skid Mounted Pressure Washer, 220 gallon poly tank, Honda GX, 18HP pump with electric start • Gas Powered Hydraulic Power Pack (2 cylinder gas) • **TOLEDO** 1,000# Platform Scale • (3) Cross Toolboxes, side toolboxes • Hose Reel, with hose • **PVC** Fittings and Pipe • Pipe Saddles • Safety Fence and Silt Fence