



1440 COWPATH RD. • HATFIELD, PA 19440
215/361-9099 • Fax: 215/361-9212
www.hunyady.com



16 CAT CB22B



(1) OF (2) ASPHALT ZIPPERS



CAT 4X4 EXTEND-A-HOES

PRE-SORTED
FIRST CLASS MAIL
US POSTAGE
PAID
HAVERTOWN, PA
PERMIT #45



ABSOLUTE AUCTION **COMPLETE LIQUIDATION**

WEDNESDAY, AUGUST 15, 2018 - 9:00AM

F.W. Shawl & Sons, Inc.

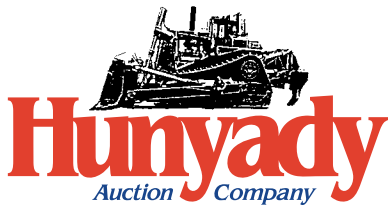
Tuckahoe, New Jersey

(Cape May County)



15 CAT 320E LRR
AND 04 KW T800

ABSOLUTE AUCTION



**F.W. Shawl
& Sons, Inc.**

Online Bidding | Powered By
proxibid

Please visit our website at
www.hunyady.com

Full Photo Library Available

Notice: F.W. Shawl and Sons, Inc., a sewer, water and drainage contractor, has been servicing both the municipalities and private sector of Southern New Jersey and coastal beach areas since 1978. At this time, the owner has determined it is time to cease operations and liquidate all assets at absolute auction. All equipment is owned by F.W. Shawl & Sons and will sell to the highest bidder, without minimums, reserves or buyers premiums.

Location: The auction will be conducted at F.W. Shawl & Sons yard in Tuckahoe, NJ, however it is a Woodbine, NJ mailing address. See GPS Navigation for auction yard and remote parking addresses.

Remote Parking: There is no available parking at the auction yard. We have secured a remote parking facility less than 1/2 mile from auction site at Amanda's Field and shuttle buses will be running continuously beginning at 7am.

GPS Navigation: Auction Yard – 1431 Route 50, Woodbine, NJ 08270; Remote Parking – Amanda's Field – 10 Sunset Drive, Woodbine, NJ 08270

Directions: TO AUCTION YARD – FROM NJ ROUTE 55: Follow to Exit #24 (Tuckahoe) Proceed to Route 49 East and continue (15) miles to NJ Route 50. Turn Right onto Route 50 South and continue (1.5) miles to auction site on Left. **TO REMOTE PARKING (AMANDA'S FIELD) –** Continue on Route 50 East, past auction site, cross bridge and take first Right onto Sunset Drive. Proceed to Amanda's Field entrance on Left.

Online Bidding: Live internet bidding will be provided by Proxibid. Proxibid will charge an Internet Service Provider Fee of 5% to the successful internet bidder for items over \$10,000 and 10% for items \$10,000 and under, for each lot purchased on-line. All interested internet bidders are required to register w/Proxibid 24 hours prior to the auction at www.proxibid.com/hunyady or call 877-505-7770.

Terms: Payment in full is required on sale day by cash, certified funds, or check with a bank letter of guarantee. Sample letter of guarantee: "We hereby guarantee the payment of our customer _____ written on his account up to _____ dollars for purchases at your auction sale on August 15, 2018". All guaranteed checks should be made payable to Hunyady Auction Co.

Sales Tax: Since this contractor is selling items not normally sold in the course of his business, the State of New Jersey (*Publication ANJ-3*) considers this a casual sale and does not require the auction company to collect sales tax.

Financing: Financing is available, please contact Susan (215) 361-9099 at the auction company for details.

Inspection: Items will be available for inspection beginning one week prior to the auction from 8:00AM to 4:00PM or sale day morning beginning at 7:00AM. The site will be closed Saturday and Sunday, August 11th and 12th.

Removal: After complete payment, all sale items may be removed on sale day as long as the removal activity is not disruptive to the sale and only until 5:00PM. Items may also be removed Thursday and Friday, August 16th and 17th, and Monday and Tuesday, August 20th and 21st, from 8:00AM until 4:00PM. All items must be removed no later than Tuesday, August 21, 2018 by 4:00PM.

Sale Site Phone: (215) 361-9099 • Sale Site Fax: (215) 361-9212

SURVEY INSTRUMENTS

(2) **SPECTRA PHYSICS** DG511 Pipe Lasers • **DIALGRADE** Wireless Line Pipe Laser • **UNUSED DAVID WHITE** LT6-900 Transit • **DAVID WHITE** LT6-900 Transit • **BERGER** 54-140B Transit • **DAVID WHITE** 8870 Transit • **NWI** NCL32 Transit • **BOSCH** GLL150E Rotary Laser Kit • Tripods and Transits

CONTRACTOR TOOLS AND SHOP TOOLS

Pneumatic Piercing Tools: (1) 6" with 10" sleeve; (3) 3"; (2) 2" • **SALA LIFT II** Rescue Device, with tripod • **SWEEPSTER** Walk Behind Broom • **GILSON** Electric Mortar Mixer • Gas Powered Post Hole Digger • (2) Foot Compactors • (2) Plate Compactors, with water • (3) **STIHL** Demo Saws, one with cart • 4500 Watt and 3500 Watt Generators • 2,600 PSI Pressure Washer • Gas Powered Ventilator • (3) 90 lb Breakers • Chipping Hammer • (2) Chain Saws • Pole Chain Saw • (2) Brush Trimmers • **Rigging:** Chain Spreaders; Cable Spreaders and Clevis Hooks • Road Signs, Stands, and Cones • (3) 1/2" Electric Impact Wrenches • (3) Angle Grinders • Hole Saw and Wood Boring Bits • (2) Sawsalls • Circular Saw • Battery Charger • Sockets • Wrenches

PIPE TAPS, TESTING, AND DEWATERING PUMPS



MUELLER CL-12 25-1 Pipe Tap with 12", 10", 8", 6", and 4" Taps • **MUELLER** B101 Pipe Tap • (2) **MUELLER** B100 Pipe Taps • (2) **MUELLER** D5 Pipe Taps • Hydrostatic Test Pump, 8HP Honda gas • Inflatable Pipe Plugs • (12) Shallow Ground Well Point Dewatering Heads • Hydraulic Dredge Pump

MUELLER CL-12 WET TAP

(Paco Pumps) (Cat 225) • 4" Portable Pump, Wisconsin gas, trailer mount • (5) 3" Diaphragm Pumps • 3" Trash Pump, Honda gas • (2) 2" Submersible Pumps • 8" and 12" Pipe Cutters • 3" Suction and Discharge Hose • Pipe Wrenches • Tubing Cutters



DREDGE PUMP

PIPE FITTINGS AND MATERIAL



Mega Lugs • Brass Hardware, valves and fittings • Ductile Fittings, Bends, Caps, Stops, etc. • Fernco Fittings • Precast Lifters • SDR35 Sewer Pipe – 14' Lengths: (65) 6" • (3) 12" • (1) 10" • (6) 8" • (5) 4" • ABS Corrugated Pipe • Ductile Iron Pipe • PVC Pipe and Conduit

ABSOLUTE AUCTION

HYDRAULIC EXCAVATORS AND ATTACHMENTS



'15 CAT 320E LRR

2015 CATERPILLAR 320E LRR Hydraulic Excavator, s/n TFX01145, powered by Cat C6.6 Acert diesel engine, equipped with 9'6" dipper stick with Cat hydraulic coupler, hydraulic beyond, Cat 28" digging bucket, pattern selector, cab with heat and air conditioning, and 31" TBG pads. In very good condition with very good undercarriage. **(2,485 Hours)**

Attachments: Cat 36" QC Digging Bucket (Unused) Very Good • Cat 22" QC Digging Bucket • 34" Digging Bucket • 30" Digging Bucket • 28" and 36" Backhoe Buckets • ALITEC 30" Cold Planer, hydraulic, excavator mount

2009 CATERPILLAR 329DL Hydraulic Excavator, s/n JHJ00342, powered by Cat C7 Acert diesel engine, equipped with 10'6" dipper stick with Cat hydraulic coupler, hydraulic beyond, Cat 36" digging bucket, pattern selector, cab with heat and air conditioning, and 31.5" TBG pads. In good to very good condition with good to very good undercarriage. **(3,488 Hours)**



'09 CAT 329DL

RUBBER TIRED LOADER



'05 CAT 938G SERIES II

2005 CATERPILLAR 938G Series II Rubber Tired Loader, s/n CRD01564, powered by Cat 3126B diesel engine and powershift transmission, equipped with Cat left side hydraulic dump bucket, Cat hydraulic coupler, ride control, enclosed ROPS cab with heat and air conditioning, and 20.5R25 tires. In fair to good condition with very good front and poor rear tires. (Moderate to severe cab rust)

Cat 48" Fork Attachment (Cat 938G) • 24" Compaction Wheel (Cat 938G/225)

SKID STEER LOADER AND MILLING ATTACHMENT



'05 CAT 268B
(MILLING ATTACHMENT SOLD SEPARATELY)

2005 CATERPILLAR 268B Skid Steer Loader, s/n LBA01051, powered by Cat 3044C diesel engine and 2-speed hydrostatic transmission, equipped with 74" general purpose bucket, high flow XPS hydraulics, and enclosed ROPS cab. In good condition with good tires.

Cat 268B Attachments: CAT PC206, 24" Milling Attachment, s/n DDG00893 • 48" Fork Attachment

TRACTOR LOADER BACKHOES



'06 CAT 420E 4X4

2006 CATERPILLAR 420E, 4x4 Tractor Loader Extend-A-Hoe, s/n HLS01557, powered by Cat 3054C diesel engine and shuttle transmission, equipped with general purpose loader bucket, 22" digging bucket, joystick backhoe controls, and enclosed ROPS cab with heat and air conditioning. In good condition with good front and fair to poor rear tires.

2002 CATERPILLAR 420D, 4x4 Tractor Loader Extend-A-Hoe, s/n FDP04735, powered by Cat 3054T diesel engine and shuttle transmission, equipped with general purpose loader bucket, 24" digging bucket, joystick backhoe controls, and enclosed ROPS cab. In good condition with good tires. (Moderate Sheet Metal/Cab Rust)



'02 CAT 420D 4X4

1994 CATERPILLAR 426B, 4x4 Tractor Loader Extend-A-Hoe, s/n 5YJ01933, powered by Cat 3054 diesel engine and shuttle transmission, equipped with general purpose loader bucket, 24" digging bucket, rear auxiliary hydraulics, joystick backhoe controls, and enclosed ROPS cab. In fair to good condition with fair to poor tires. (Cab Rust)



'94 CAT 426B 4X4

ASPHALT ZIPPERS AND ROLLERS



'16 ASPHALT ZIPPER AZ360 HOT ROD

2016 ASPHALT ZIPPER AZ360 Hot Rod, 36" Asphalt Mill, s/n AZ0208, powered by JD 173HP diesel engine, equipped with wireless remote and umbilical cab controls, Z-Pro cutter head, with tandem axle transport trailer. In excellent condition. **(81 Original Hours)**

2004 ASPHALT ZIPPER AZ360, 36" Asphalt Mill, s/n 36000179, powered by JD diesel engine, equipped with umbilical cab controls, with single axle transport trailer. In good condition.



'04 ASPHALT ZIPPER AZ360



'16 CAT CB22B

2016 CATERPILLAR CB22B Tandem Vibratory Roller, s/n 2B200129, powered by Perkins diesel engine and hydrostatic transmission, equipped with 39" smooth drums, drum vibration selector, front and rear spray, and folding roll bar. In very good to excellent condition. **(218 Hours)**

1995 GALION S3-5B, 3-5 Ton Static Roller, s/n 530075, powered by Cummins diesel engine and hydrostatic transmission, equipped with 42" smooth drums. In good condition.

'95 GALION S3-5B



TUCKAHOE, NEW JERSEY (CAPE MAY COUNTY)

BROOM TRACTOR AND AIR COMPRESSOR



FORD 340

2013 SULLAIR 185DPQCi4 Portable Air Compressor, s/n 201301290040, Cat C2.2L diesel engine. In very good condition. (495 Hours)

'13 SULLAIR 185CFM



FORD 340 Broom Tractor, s/n C665479, powered by diesel engine and manual transmission, equipped with Sweepster 6' hydraulic broom with angle, 3-point hitch, York rake, and water barrels. In fair to good condition.

UTILITY TRUCKS



'00 FORD F-550XL SUPER DUTY

2000 FORD E-350 Utility Truck, powered by Triton V-8 gas engine and automatic transmission, equipped with Stahl 11' walk-in utility body with side boxes, dual rear wheels, and air conditioning. In fair to good condition.

'00 FORD E-350

2000 FORD F-550 XL Super Duty Utility Truck, powered by Powerstroke 7.3L diesel engine and 5 speed with low manual transmission, equipped with Reading 11' walk-in utility body with side boxes, dual rear wheels, and air conditioning. In good condition with good tires.



DUMP TRUCKS



'04 KENWORTH T800

2000 FORD F-750XLT Super Duty Single Axle Dump Truck, powered by Cat 3126, 7.2L diesel engine and Spicer 7 speed transmission, equipped with 10' steel dump body, 21,000 lb rear and 12,000 lb front axle, 33,000 lb GVWR, tow package with air, air brakes, and air conditioning. In good condition with good tires.



'00 FORD F-750XLT SUPER DUTY

2001 FORD F-550XL Super Duty Dump Truck, powered by Powerstroke 7.3L diesel engine and automatic transmission, equipped with 9' steel dump body, behind cab toolboxes, dual rear wheels, and air conditioning. In good condition with good tires.



'01 FORD F-550XL SUPER DUTY

2004 KENWORTH T800 Tri-Axle Dump Truck, powered by Cat C15, 475HP diesel engine and Eaton Fuller RTO16908LL transmission, equipped with J&J 17'6" steel dump body with air gate and power tarp, 46,000 lb rears, 20,000 lb front and lift axles, full locking differentials, 3-stage engine brake, aluminum wheels, air conditioning, and cruise control. In good condition with fair to good tires. (213,883 Miles)

TAG-A-LONG TRAILERS AND STORAGE CONTAINERS

2002 ROGERS TAG21-24/102/2XPS, 21 Ton Tag-A-Long Trailer, equipped with 8'6" x 19' deck with beavertail and ramps, air brakes. In good condition with good tires.

1995 ROGERS TAG21-24/102/2XSP, 21 Ton Tag-A-Long Trailer, equipped with 8'6" x 19' deck with beavertail and ramps, air brakes. In good condition with good tires.

BRI-MAR Tandem Axle Tag-A-Long Trailer, equipped with skid mounted Kaiser 185CFM air compressor. In fair condition.

1987 EAGER BEAVER TL6 Single Axle Tilt Deck Trailer, 6,000 lb GVWR. In fair condition.

Single Axle Water Trailer, equipped with 1,000 gallon poly tote, PVC spray bar.

(2) 8'x20' Sea Containers. In good condition.



'02 AND '95 ROGERS 21 TON

TRENCH BOXES AND ROAD PLATE



TRENCH BOXES

Trench Boxes: 8'x20' and 5'x24' (round spreaders)
 • 6x16 with 4' bolt-on spreaders
 • 16'x8'x8' Manhole box
 • 8' L x 6' H Aluminum Trench Box
 • Gravel Box
 • PRO-TEC Aluminum Shoring Panels

Road Plate: (6) 8'x12'x1/2"
 • (4) 8'x8'x1/2"

TRUCK TRACTOR AND LOWBOY TRAILER

1996 AUTOCAR Tandem Axle Truck Tractor, powered by Cat 3406 diesel engine and Eaton Fuller RTXF14608LL transmission, equipped with 48,000 lb rears, wetline, and single frame. In fair to good condition.

1983 ROGERS TH35DSF20-57-B20, 35 Ton Tandem Axle Lowboy Trailer, equipped with ground bearing hydraulic detachable and 20'x8' level deck. In fair to good condition.

'96 AUTOCAR AND '83 ROGERS 35 TON



WEDNESDAY, AUGUST 15, 2018 - 9:00AM