

1440 COWPATH RD. • HATFIELD, PA 19440
 215/361-9099 • Fax: 215/361-9212



'03 LIEBHERR HS855SX 115 TON



(1) OF (2) MANITOWOC 2250 SERIES III



(1) OF (2) MANITOWOC 999 SERIES III

PRE-SORTED
 FIRST CLASS MAIL
 US POSTAGE
PAID
 HAVERTOWN, PA
 PERMIT #45



SEALED BID AUCTION

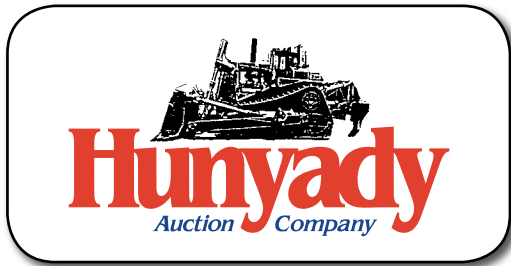
BID DEADLINE: MARCH 18, 2014 @ 5:00PM EST



(2) OF (4) MANITOWOC 888
 SERIES II

(51) SURPLUS CRAWLER CRANES

SEALED BID AUCTION



Notice: Essex Crane Rental Corp. is continually evaluating their rental assets to ensure that they meet the needs of their customers and provide the highest possible return for their shareholders. In an effort to accelerate the sale of currently underutilized cranes, Essex Crane has decided to offer the following assets that are surplus to their present needs. Essex Crane is highly motivated to sell these assets though it reserves the right to accept or reject any bids received.

Additional Information: You can find detailed specifications, photos, and much more at our website www.hunyady.com, navigate to Current Auction Calendar, there you will find links to all pertinent information and additional photographs.

Financing: Financing is available, please contact Susan at Hunyady Auction Company for complete details. Those anticipating financing must apply for, well in advance of bid deadline. A bank issued letter of pre-approval must accompany the submitted bid form at deadline.

Location and Directions: Inspection is by appointment only, all pertinent information, including location and directions, will be provided at time of confirmation of inspection appointment.

Inspection: Inspections will be Monday through Friday, beginning Monday, March 3, 2014. All inspections will be by appointment only! Please contact Hunyady Auction at (800) 233-6898 or (215) 361-9099 to arrange an inspection appointment.

Bidding Process: Bid packages can be obtained by contacting Hunyady Auction Company and will be sent directly to you via US mail, overnight mail, e-mail, or fax. Bid packages will contain terms and conditions of the sale, complete equipment description, and directions to the site. All bid sheets must be signed and delivered to our home office on or before Tuesday, March 18, 2014 by 5:00PM EST.

Bid Deadline: All bids must be received at our office no later than Tuesday, March 18, 2014 by 5:00PM EST.

Loading and Removal: All items will be sold FOB at no additional cost and loaded by appointment only.

Bank Letter of Guarantee: If prior credit has not been established with Hunyady Auction Company, we will require that all bids submitted to be accompanied by a "Bank Letter of Guarantee" qualifying available funds supporting, at minimum, the total amount of bids submitted.

If financing purchases, we will require a "Letter of Pre-Approval" from financier.

Sample "Letter of Guarantee": "We hereby guarantee available funds for our customer _____, up to the amount of \$ _____ at the time of this writing on the date of _____. All letters of guarantee must be on bank letterhead and signed by a qualified bank officer.

Notification of Successful Bid: Successful bidders will be notified Friday, March 21, 2014 by 12:00PM EST.

Terms and Conditions: Successful bidders will be required, at a minimum to place a 10% deposit, via wire transfer, no later than Monday, March 24, 2014 at 5:00PM EST, and balance to be paid on or before Friday, March 28, 2014. No items will be removed until payment is made in full.

Sales Tax: Sales Tax will be collected according to the state law of the current location of each crane at time of sale, unless valid exemption form is provided.



SEALED BID AUCTION

**BID DEADLINE:
MARCH 18, 2014
@ 5:00PM EST**

**ALABAMA
CALIFORNIA
FLORIDA
PENNSYLVANIA
TEXAS
WASHINGTON**

SEALED BID AUCTION

Bidders Note: The equipment listed below is offered in good, work ready, rent ready condition (except where noted). All units are offered with the boom lengths listed. Bidders may choose to select shorter or longer boom lengths to meet your individual requirements as well as additional options such as fixed jibs or hook blocks. Further the bidder may stipulate any additional features or options required. Bids will be evaluated based on the total boom, options or conditions stipulated by the bidder.

(2) 1998 MANITOWOC Model 2250 Series III, 300 Ton Crawler Cranes, powered by Cummins N14C-450 diesel engine and multi-hydraulic pump transmission, equipped with 260' No. 44 pin-connected angle/tubular boom, standard unequal split drum shaft, EPIC controls, Manitowoc LMI system, self-erection features, Series III counterweight package, luffing jib, MAX-ER, and 3rd drum prepped, air conditioning, 30'9" crawlers, and 48" pads.

s/n 2251030 (TEXAS)
s/n 2251015 (TEXAS)



S/N 2251030 (TEXAS)



S/N 2251015 (TEXAS)



S/N 2251015 (TEXAS)

(2) 2000-2001 MANITOWOC Model 999 Series III, 275 Ton Crawler Cranes, powered by CAT 3176C-390 diesel engine and multi-hydraulic pump transmission, equipped with 220' No. 82 pin-connected angle/tubular boom, standard equal width tandem load drums, EPIC controls, Manitowoc LMI system, self-erection features, Series III counterweight package, luffing jib and 3rd drum prepped, air conditioning, 28'3" extendable crawlers, and 48" pads.

s/n 9991058 year-2001 (TEXAS)
s/n 9991005 year-2000 (TEXAS)



S/N 9991058 YEAR-2001 (TEXAS)



S/N 9991005 YEAR-2000 (TEXAS)

(4) 1995-1996 MANITOWOC Model 888 Series II, 220/230 Ton Crawler Cranes, powered by Cummins MTA11C-330 diesel engine and multi-hydraulic pump transmission, equipped with 200' No. 22E or 22EL pin-connected angle/tubular boom, standard equal width tandem load drums, EPIC controls, self-erection features, Series II counterweight package, Anti 2-Block, 28'3" extendable crawlers, and 48" pads.

s/n 8881003 year-1995, 230 Ton, 22E Boom, LSI LMI (TEXAS)
 s/n 8881038 year-1996, 220 Ton, 22EL Boom, LSI LMI (CALIFORNIA)
 s/n 8881009 year-1996, 220 Ton, 22EL Boom, LSI LMI (TEXAS)
 s/n 8881007 year-1995, 220 Ton, 22EL Boom, LSI LMI, air conditioning (NORTH CAROLINA)



S/N 8881003 YEAR-1995, 230 TON, 22E BOOM, LSI LMI (TEXAS)



S/N 8881009 YEAR-1996, 220 TON, 22EL BOOM, LSI LMI (TEXAS)



S/N 8881003 YEAR-1995, 230 TON, 22E BOOM, LSI LMI (TEXAS)



S/N 8881038 YEAR-1996, 220 TON, 22EL BOOM, LSI LMI (CALIFORNIA)



S/N 8881007 YEAR-1995, 220 TON, 22EL BOOM, LSI LMI, AIR CONDITIONING (NORTH CAROLINA)

2003 LIEBHERR Model HS855SX, 115 Ton Crawler Crane, s/n 184521 powered by Liebherr D9408 TI-E 544HP Tier 2 diesel engine and multi-hydraulic pump transmission, equipped with 95' No. 1311 pin-connected tubular boom, (2) 44K SLP Main hoists with Free Fall, auxiliary 17K SLP hoist, self-erection features, Litronic LMI system, 57,900# counterweight package, auxiliary hydraulics for vibrator and fixed leads, SWG Controls, air conditioning, 21' extendable crawlers, and 35" pads. (CALIFORNIA)



SEALED BID AUCTION

(10) MANITOWOC Model 4100W Series II VICON 230 Ton Crawler Cranes, powered by Cummins 855 diesel engine and VICON controlled torque converters, equipped with 200' No. 22C pin-connected angle/tubular boom, standard equal width tandem load drums, Series II counterweight package, Anti 2-Block, 26'6" extendable crawlers, and 48" pads.

s/n 41664 year-1980, Grooved Drums (ALABAMA)
s/n 41465 year-1977, Full Range VICON (ALABAMA)
s/n 41434 year-1976 (CALIFORNIA)
s/n 41410 year-1976, air conditioning (TEXAS)
s/n 41386 year-1976 (TEXAS)

s/n 41329 year-1975 (SOUTH CAROLINA)
s/n 41324 year-1975, Full Range VICON (ALABAMA)
s/n 41282 year-1975 (TEXAS)
s/n 41228 year-1974 (TEXAS)
s/n 41201 year-1973, Full Range VICON (ALABAMA)



S/N 41664 YEAR-1980, GROOVED DRUMS (ALABAMA)



S/N 41410 YEAR-1976, AIR CONDITIONING (TEXAS)



S/N 41282 YEAR-1975 (TEXAS)



S/N 41465 YEAR-1977, FULL RANGE VICON (ALABAMA)



S/N 41386 YEAR-1976 (TEXAS)



S/N 41228 YEAR-1974 (TEXAS)



S/N 41434 YEAR-1976 (CALIFORNIA)



S/N 41329 YEAR-1975 (SOUTH CAROLINA)



S/N 41201 YEAR-1973, FULL RANGE VICON (ALABAMA)



S/N 41324 YEAR-1975, FULL RANGE VICON (ALABAMA)

(15) MANITOWOC Model 4000W VICON 175 Ton Crawler Cranes, powered by Cummins 855 diesel engine and VICON controlled torque converters, equipped with 180' No. 22A pin-connected angle/tubular boom, Standard unequal split drum shaft, 3-piece 104,400# rear counterweight, Anti 2-Block, 24' extendable crawlers, and 48" pads.

s/n 40734 year-1982 (FLORIDA)
 s/n 40705 year-1980 (TEXAS)
 s/n 40699 year-1980 (TEXAS)
 s/n 40629 year-1977, air conditioning (ALABAMA)
 s/n 40609 year-1977 (FLORIDA)
 s/n 40581 year-1976 (TEXAS)
 s/n 40579 year-1976 (CALIFORNIA)
 s/n 40578 year-1976 (FLORIDA)

s/n 40566 year-1976 (CALIFORNIA)
 s/n 40477 year-1973 (ALABAMA)
 s/n 40473 year-1974 (FLORIDA)
 s/n 40467 year-1973, air conditioning (TEXAS)
 s/n 40444 year-1973 (FLORIDA)
 s/n 40421 year-1972 (TEXAS)
 s/n 40301 year-1969, 150 Ton (TEXAS)



S/N 40734 YEAR-1982 (FLORIDA)



S/N 40477 YEAR-1973 (ALABAMA)



S/N 40467 YEAR-1973, AIR CONDITIONING (TEXAS)



S/N 40705 YEAR-1980 (TEXAS)



S/N 40581 YEAR-1976 (TEXAS)



S/N 40578 YEAR-1976 (FLORIDA)



S/N 40421 YEAR-1972 (TEXAS)



S/N 40699 YEAR-1980 (TEXAS)



S/N 40579 YEAR-1976 (CALIFORNIA)



S/N 40566 YEAR-1976 (CALIFORNIA)



S/N 40301 YEAR-1969, 150 TON (TEXAS)



S/N 40609 YEAR-1977 (FLORIDA)

S/N 40473 YEAR-1974 (FLORIDA)



S/N 40444 YEAR-1973 (FLORIDA)



(10) MANITOWOC Model 3900W Series II VICON 140 Ton Crawler Cranes, powered by Cummins 855 diesel engine and VICON controlled torque converters, equipped with 170' No. 9 or 9A pin-connected angle/tubular boom, Standard unequal split drum shaft, 3-piece 84,600# rear counterweight, Anti 2-Block, 24' extendable crawlers, and 48" pads.

- s/n 395233 year-1981, No. 9A Boom (ALABAMA)
- s/n 395230 year-1981, No. 9A Boom (CALIFORNIA)
- s/n 395223 year-1981, No. 9A Boom, 3rd Drum (WASHINGTON)
- s/n 395220 year-1981, No. 9A Boom, air conditioning (CALIFORNIA)
- s/n 395208 year-1980, No. 9A Boom, 3rd Drum Prepped (PENNSYLVANIA)
- s/n 395148 year-1976, No. 9A Boom, CAT 3406 (No Anti 2-Block) (TEXAS)
- s/n 395084 year-1971, No. 9 Boom (ALABAMA)
- s/n 395071 year-1971, No. 9 Boom (TEXAS)
- s/n 395061 year-1970, No. 9 Boom, air conditioning (TEXAS)
- s/n 395058 year-1969, No. 9 Boom (TEXAS)



S/N 395223 YEAR-1981, NO. 9A BOOM, 3RD DRUM (WASHINGTON)



S/N 395208 YEAR-1980, NO. 9A BOOM, 3RD DRUM PREPPED (PENNSYLVANIA)



S/N 395071 YEAR-1971, NO. 9 BOOM (TEXAS)



S/N 395220 YEAR-1981, NO. 9A BOOM, AIR CONDITIONING (CALIFORNIA)



S/N 395084 YEAR-1971, NO. 9 BOOM (ALABAMA)



S/N 395148 YEAR-1976, NO. 9A BOOM, CAT 3406 (NO ANTI 2-BLOCK) (TEXAS)



S/N 395058 YEAR-1969, NO. 9 BOOM (TEXAS)



(6) MANITOWOC Model 3900 VICON 100 Ton Crawler Cranes, powered by Cummins 855 diesel engine and VICON controlled torque converters, equipped with 120' No. 8 bolt-together angle/tubular boom, Standard equal split drum shaft, 3-piece 73,500# rear counterweight, Anti 2-Block, 20'4" crawlers, and 48" pads.

- s/n 391276 year-1981 (TEXAS)
- s/n 391223 year-1979 (PENNSYLVANIA)
- s/n 391151 year-1977 (Engine Needs Rebuilt) (ALABAMA)
- s/n 391139 year-1977 (CALIFORNIA)
- s/n 391115 year-1976 (Engine Needs Rebuilt) (ALABAMA)
- s/n 39844 year-1969, 3rd Drum (WASHINGTON)



S/N 391276 YEAR-1981 (TEXAS)



S/N 391223 YEAR-1979 (PENNSYLVANIA)

S/N 391151 YEAR-1977 (ENGINE NEEDS REBUILT) (ALABAMA)



S/N 39844 YEAR-1969, 3RD DRUM (WASHINGTON)



1972 MANITOWOC Model 3900B 100 Ton Crawler Crane, s/n 391037, powered by Cummins 855 diesel engine and Twin Disc torque converter, equipped with 120' No. 8 bolt-together angle/tubular boom, Standard equal split drum shaft, 3-piece 73,500# rear counterweight, 20'4" crawlers, and 48" pads. (Non-VICON) (No Anti-2 Block) (ALABAMA)

No. 134 Fixed Jibs available in 30', 40', 50', 60', 70' & 80' lengths
(Models 888 & 999)

No. 123 Fixed Jibs available in 30', 40', 50' & 60' lengths
(Models 3900, 3900W, 4000W & 4100W)