

# **ABSOLUTE AUCTION**

## **COMPLETE LIQUIDATION**

### **BY ORDER OF TRUSTEE**

'04 BERCO RTM225A-BS

**WEDNESDAY,  
DECEMBER 5, 2012  
9:00 AM**

**Altoona, Pennsylvania**

**Altoona-Beasley  
Manufacturing, Inc.**



1440 COWPATH RD. • HATFIELD, PA 19440  
215/361-9099 • Fax: 215/361-9212  
[www.hunyady.com](http://www.hunyady.com)



'00 BERCO 225A-40



'03 SERDI 100HD

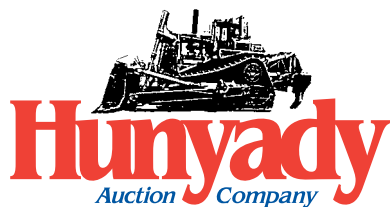


'04 FORD F-550XL SUPER DUTY

PRE-SORTED  
FIRST CLASS MAIL  
US POSTAGE  
**PAID**  
HAVERTOWN, PA  
PERMIT #45



# ABSOLUTE AUCTION



## Altoona-Beasley Manufacturing, Inc.

Bid Live Online | proxibid  
www.proxibid.com/hunyady

Please visit our website at  
[www.hunyady.com](http://www.hunyady.com)

**Notice:** Pursuant to U.S. Bankruptcy Court Case #10-71091 and by Order of Trustee all equipment assets formerly owned and operated by Altoona-Beasley Manufacturing, Inc. shall be liquidated. All items must sell to the highest bidder without minimums, reserves, or buyer's premiums!

**Location:** The auction will be held at the Altoona-Beasley facility at 210 East Plank Road, Altoona, Pennsylvania 16602

**Dismantlement and Loadout:** Certain machines will be required to be dismantled and loaded out by a qualified rigger for safety purposes. Loadout fees will be added to the purchaser's invoice. One rigger will be selected and must be used. No other contractors will be permitted. Individual fees will be published in the sale day catalog. Items not requiring professional rigging will be loaded by the auction company at no charge!

**Sale Site Directions: FROM INTERSTATE 99 SOUTH BOUND:** Exit #32 (Frankstown Road) End of ramp at traffic light turn left onto Frankstown Road. Proceed to second traffic light and turn left onto Plank Road. Sale site will be on immediate right.

**FROM INTERSTATE 99 NORTH BOUND:** Exit #32 (Frankstown Road) End of ramp at traffic light turn right onto Frankstown Road. Proceed to third traffic light and turn left onto Plank Road. Sale site will be on immediate right.

**Online Bidding:** Live internet bidding will be provided by Proxibid. Proxibid will require a 2.5% internet provider service fee (capped at \$750) that will be charged for each item purchased online. All interested internet bidders are required to register with Proxibid 24 hours prior to the auction at [www.proxibid.com/hunyady](http://www.proxibid.com/hunyady) or call 877-505-7770

**Terms:** Payment in full is required on sale day by cash, certified funds, or check with a bank letter of guarantee. Sample letter of guarantee: "We hereby guarantee the payment of our customer \_\_\_\_\_ written on his account up to \_\_\_\_\_ dollars for purchases at your auction sale on December 5, 2012." All guaranteed checks should be made payable to Hunyady Auction Co.

**Sales Tax:** The Commonwealth of Pennsylvania considers this an isolated sale and does not require the auction company to collect sales tax.

**Financing:** Financing is available, please contact Susan (215) 361-9099 at the auction company for details.

**Inspection:** Items will be available for inspection beginning one week prior to the auction from 8:00AM to 5:00PM. The site will be closed Saturday and Sunday, December 1st and 2nd.

**Removal:** After complete payment, all sale items may be removed on sale day as long as the removal activity is not disruptive to the sale and only until 5:00PM. Items may also be removed Thursday and Friday, December 6th and 7th. and Monday, December 10th thru Wednesday, December 12th from 8:00AM to 5:00PM. All items must be removed no later than Wednesday, December 12, 2012 at 5:00PM.

**Airport Information:** Commercial and Private aviation is best serviced via Altoona-Blair County Airport (KAOO) (approximately 18 miles from auction site)

**Motel Information:** Hampton Inn, 180 Charlotte Drive, Altoona, PA 16602 (814) 941-3500 • Courtyard, 2 Convention Center Drive, Altoona, PA 16602 (814) 312-1800

• Ramada Inn, 1 Sheraton Drive, Altoona, PA 16602 (814) 946-1631

**Sale Site Phone: (800) 233-6898 • Sale Site Fax: (888) 859-8958**

### VAN BODY AND PICKUP TRUCK



'04 FORD F-550XL  
SUPER DUTY

**2004 FORD F-550XL Super Duty Single Axle Van Body Truck**, Powerstroke 6.0L diesel engine and automatic transmission, 16" FRP van body with electric lift gate and swing rear door, curbside door, dual fuel tanks, cruise control, air conditioning, and 225/70R19.5 tires. In good condition with good tires.



'97 DODGE RAM 1500 4X4

**1997 DODGE Ram 1500, 4x4 Pickup Truck**, Magnum 5.2L V-8 gas engine and automatic transmission, 8' bed with liner, Meyer 8' snow plow, tow package, air conditioning, and 245/75R16 tires. In good condition with fair tires.

### SHOP TOOLS AND MISCELLANEOUS

Shopmade Oil Pump Flow & Pressure Tester, pump drive 3 phase electric motor, Lancer GPD 402 motor controller, digital RPM indicator, and flow and pressure meters • **PORTER CABLE** Belt Sander, 1HP electric motor • **KRW 37N**, 3 Ton Manual Arbor Press • (6) Torque Wrenches • (2) **INGERSOLL-RAND** Sensor I 125 Digital Torque Wrenches • CDI 0-300 in. lb. Dial Torque Wrench • (12) Pedestal Shop Fans • **DAYTON** 3/4 HP 8" Dual Wheel Bench Grinder, with belt sander • (13) Chain Hoists consisting of: (3) 1 ton, (4) 1/2 ton, & (6) 1/4 ton, each with free standing floor mounted jib • (17) Parts Baskets • (2) Pallet Jacks • **DAKE 4M**, 5 Ton Arbor Press • (9) Metal Work Benches, 3 vise • (18) 6' Metal Work Benches, 3 vise • (6) 5' Metal Work Benches • 4' Metal Work Bench • 3' Metal Work Bench • (17) Rolling Parts Carts • (6) Rolling Shop Carts • (4) **INGERSOLL-RAND** 3/8" Pneumatic Impact Guns • **INGERSOLL-RAND** 1/2" Pneumatic Impact Gun • (7) Camshaft Racks • (6) 2-Wheel Dollies • **SUNNEX** 12 Speed Electric Drill Press • **PACKLAND** Multi-Speed Electric Drill Press • Approx. 500' of Assorted Width Gravity Roller Conveyor (Majority 18" & 32") • (20 Sections) Pallet Racking • (4) 1/2" Electric Drills • (6) 1/2" Pneumatic Drills • Portable Engine Stand • (3) Portable Crankshaft Racks



## CRANKSHAFT AND CAMSHAFT GRINDERS, POLISHERS, AND ACCESSORIES



**'04 BERCO RTM225A-BS**  
596B, 220-volt single phase electric motor, 88" bed, 24" grinding wheel, Peterson "finger tip" controlled "swing chucks", and oil bath system (Chucks Are Adjustable To Grind Both Rod & Main Bearings)

**2004 BERCO RTM225A-BS Crankshaft Grinder**, s/n 612B, 220-volt single phase electric motor, 88" bed, 24" grinding wheel, Peterson "finger tip" controlled "swing chucks", and oil bath system (Chucks Are Adjustable To Grind Both Rod & Main Bearings)

### 2000 BERCO 225A-40 Crankshaft Grinder

s/n 596B, 220-volt single phase electric motor, 88" bed, 24" grinding wheel, Peterson "finger tip" controlled "swing chucks", and oil bath system (Used For Grinding Both Rod & Main Bearings) (Operational But Needs Refurbishment)

**BERCO RTM270 Crankshaft Grinder**, s/n 376B, 220-volt single phase electric motor, 10" bed, 24" grinding wheel, Peterson "finger tip" controlled "swing chucks", and oil bath system (Used For Grinding Both Rod & Main Bearings) (Operational But Needs Refurbishment)

**BERCO RTM270**

**BERCO RAC1500 Camshaft Grinder**, s/n 438B, 6" bed, 18" grinding wheel with 3KW 3 phase electric motor, electric oil bath system, and approx. (100) cam masters

**BERCO RAC1500**



**'00 BERCO 225A-40**



**STORM VULCAN Kot-A-Fin Crankshaft Polisher**, s/n not available, 220-volt single phase electric motor, 80" bed, 2 1/2-belt capacity, and hand-held pneumatic polisher

**STORM VULCAN KOT-A-FIN**

**STORM VULCAN 744 Cam Shop Camshaft Polisher**, s/n 50285, 56" bed, 3/4" polishing belt with .5HP single phase electric motor; camshaft rotator with .5HP single phase electric motor; and Enco 40050, 475 RPM to 2600 RPM drill press with .5HP single phase electric motor



**SUNNEN HS30K Crankshaft Honing Stand**, s/n 1C61734, 115-volt single phase electric motor, Dewalt 1/2" electric drill

**STORM VULCAN CSP-60 Hydraulic Crank Straightening Press**, s/n 71-354

**VAN NORMAN Crankshaft Grinding Wheel Balancer**

**SUNNEN HS30K**



**STORM VULCAN 744**

115-volt single phase electric motor, Dewalt 1/2" electric drill

## VALVE SEAT AND RE-FACER MACHINES, SURFACING MACHINES, AND ACCESSORIES



**'03 SERDI 100HD**

**2003 SERDI 100HD Valve Seat Machine**, s/n 111, 240-volt single phase electric motor, 54" bed, manual angle head stands, and pneumatic floating spindle head

**1988 SERDI 100 Valve Seat Machine**, s/n 732, 240-volt single phase electric motor, 39" bed, manual angle head stands, and pneumatic floating spindle head

**SUNNEN VGS-20C Valve Seat Machine**, s/n 1J1-1048, 230-volt single phase electric motor, 46" bed and pneumatic clamps

**TOBIN-ARP VR Valve Refacer**, s/n 1079, .5HP grinding motor, .5HP valve turning motor, and coolant system

**2004 ROTTLER SF7M Surfacing Machine**, s/n 24430, 240-volt single phase electric motor, 0 to 40 in./min. feed rate, 300 to 1200 RPM spindle speed, 14" cutting head, 21"x48" slotted table, and 15"x30" manual adjusting removable slotted table

**K-LINE KL9942 Pneumatic Valve Guide Installation Bench**, 40" travel • **K-LINE Valve Guide Installation Bench**, 30" travel (Formerly Pneumatic Operation - Currently Manual Operation) • **MASTER TOOL Pneumatic Head Leak Detector**

**'04 ROTTLER SF7M**



**'88 SERDI 100**



**TOBIN-ARP VALVE REFAKER**



**SUNNEN VGS-20C**



## CAP AND ROD GRINDERS AND ENGINE TEST STANDS



**SUNNEN CRG2000K**

**SUNNEN CRG2000K Angle Cap & Rod Grinder**, s/n 1W1-1030, 115 volt, 3/4HP single phase electric motor, pneumatic rod clamp

**SUNNEN CRG-750 Heavy Duty Cap & Rod Grinder**, s/n 12968, single phase electric motor, 6" grinding wheel

**(4) JASPER Engine Test Stands**, RPM, temperature, oil pressure, and oil flow rate gauges, and assorted natural gas adapters

## PISTON PIN CUTTER, CONNECTING ROD TESTER, AND PIN PRESSES



**TOBIN-ARP PM2500**

**TOBIN-ARP PM2500 Piston Pin Cutter**, s/n 852330, 1/2HP single phase electric motor, 22" rod capacity, pneumatic rod clamps, 7" throw, and coolant system

**TOBIN-ARP R1 Connecting Rod Bend, Twist, & Length Tester**, s/n 84414, Storm Vulcan 4U-50, 3,000PSI manual hydraulic rod straightening press and pneumatic rod clamp

**SUNNEN BP-10K, 10 Ton Hydraulic Pin Press**, s/n 8368, 1 1/2HP single phase electric motor

**JASPER Pin Press**, with jigs

**TOBIN-ARP R1**



## LATHES, RE-FACERS/SURFACER, AND FINISHERS



**JET GHB1340**

**JET GHB1340 Geared Head Bench Lathe**, s/n 9112N2224, 240-volt single phase electric motor, 70 to 1255 spindle speed, 56" bed, and 7" 3-jaw chuck

**1986 ENCO 110-2070 Lathe**, s/n 865164, 1.5HP single phase electric motor, 6" 3-jaw chuck, 44" bed, 160 to 600 RPM chuck speed, and turning tool holder

**STORM VULCAN ANDERSON AB1540A Surfacer**, s/n 401, 240-volt single phase electric motor, 18" belt width capacity and 36" surfacing area

**KWIK WAY Rocker Arm Refacer**, 1/3HP single phase electric motor, 8" grinding wheel

**ULTRAMATIC OH0-1530 Vibratory Finisher**, single phase electric motor, 30"x15"x12"D box



**STORM VULCAN ANDERSON AB1540A**

## SHOT AND BEAD BLAST MACHINES, AND DUST COLLECTOR CABINET



**(1) OF (3) PANGBORN SHOT BLAST MACHINES**

**PANGBORN Rotary Shot Blast Machine**, s/n 57413, 460-volt 3 phase electric motor, electric door, shot blast retrieval elevator, and dust collector

**PANGBORN 36NR Rotary Shot Blast Machine**, s/n 69419, 460-volt 3 phase electric motor, electric door, shot blast retrieval elevator, and Pangborn size 300 dust collector

**PANGBORN Rotary Shot Blast Machine**, s/n unknown, 460-volt 3 phase electric motor, electric door, shot blast retrieval elevator, and Pangborn size 300 dust collector

**2006 EMPIRE PF3642 Bead Blaster**, s/n 5/0 77676, single phase electric motor

**EMPIRE DCM200A Profinish Bead Blaster**, s/n not available, 240-volt single phase electric motor, dust collector

**DONALDSON Torit V5-3000 Dust Collector & Blowout Cabinet**, 480-volt 3 phase electric motor



**'06 EMPIRE PF3642**

## BORING, HONING, AND RESURFACING MACHINES



**2005 BERCO ACP160A Double Block Programmable Cylinder Boring Machine**, s/n 117B 67" travel and manual block clamps

**ROTTLER F54X Programmable Single Block Cylinder Head Boring Machine**, s/n 19307, 240-volt single phase electric motor, 54" travel and pneumatic block clamp

'05 BERCO ACP160A



**ROTTLER FA24MAB Single Block Cylinder Boring Machine**, s/n 4306R, 230-volt 3 phase electric motor, manual spindle travel (Formerly A Two-Head Machine – One Spindle Removed – Can Accommodate Two Head Clamps)

ROTTLER FA24MAB

**ROTTLER FA2MACB Single Block Cylinder Boring Machine**, s/n 3839R, 220-volt 3 phase electric motor, 44" manual spindle travel and pneumatic clamping block holder



**SUNNEN CK-21D Programmable Cylinder Head Honing Machine**, s/n 3X1-1175, 230-volt 3 phase electric motor, 56" spindle head travel and oil bath system

ROTTLER FA2MACB

SUNNEN CK-21D



ROTTLER F54X



SUNNEN CV-616-D

**SUNNEN CV-616-D Cylinder Head Boring & Honing Machine**, s/n 1H1-2966, 230 volt, 3-phase electric motor, 48" spindle head travel and oil bath system

**SUNNEN CH100K Align Honing Machine**, s/n 1373, 115 volt, single phase electric motor, Sunnen 3/4HP electric drill, 2.4" to 4.0" hones, and oil bath system



SUNNEN CH100K



'05 SUNNEN ML-2000-DF

**2005 SUNNEN ML-2000-DF Connecting Rod Hone**, s/n 4D1-1187, 230-volt 3 phase electric motor, 200 to 3000 RPM spindle speed, 60 to 350 SPM stroker speed, .25 to 6.6" stroke length, AG300 precision gauge, pneumatic rod clamp, and Sunnen ML3490D oil bath system

**SUNNEN LBB-1810 Precision Honing Machine**, s/n 24073, 1HP 3 phase electric motor, 12" throw auto-stroke Sunnen AG-300 pin fitting and rod reconditioning gauge and oil bath system



SUNNEN LBB-1810



**ROTTLER SF-2 Block Surfacing Machine**, s/n 22018, 230-volt single phase electric motor, 250 to 1250 RPM spindle speed, adjustable feed rate, 14" cutter head, 70" travel, 15"x30" manual adjustable slotted table, and pneumatic clamping block holder

ROTTLER SF-2

## PARTS WASHERS



**AXE SW4-2032GHT Heated Parts Washer**, s/n 6914, 230-volt single phase electric motor, natural gas heater, approx. 100 gallon tank, (4) turntables, and pneumatic door clamps

**AXE SW2032 Heated Parts Washer**, s/n 5149, 230-volt single phase electric motor, natural gas heater, approx. 100 gallon water tank, (2) turntables, and pneumatic door clamps

**STORM VULCAN SP-90 Heated Spray Wash Cabinet**, s/n 790, 220 volt, 3-phase electric motor, 90 gallon water tank, natural gas water heater, and 24" diameter rotating parts basket

AXE SW4-2032GHT

**LS INDUSTRIES Heated Parts Washer**, s/n 87-10-227WB-CMB, 230-volt single phase electric motor, natural gas heater, (2) 48" stacked parts baskets, approx. 100 gallon water tank, and manual door clamp

**LS 30"x60"x50"H Vibratory Parts Washer**, s/n 87-5-765S-7S, 3 phase electric motor, electric heater and timer, and 20"x24" manual wash table

**LS 28"x57"x50"H Vibratory Parts Washer**, 3 phase electric motor, electric heater and timer, and 20"x24" manual wash table

**(2) MAGNUS 24"x32"x20"D Electric/Pneumatic Parts Washers**, electric agitating trays

**STORM VULCAN Jet Clean Heated Parts Washer**, 230-volt single phase electric motor, natural gas heater, approx. 100 gallon tank, and pneumatic door clamp (Not Operational)

## CYLINDER HEAD REMOVAL/ASSEMBLY FIXTURE AND REAMER



**2004 PETERSON SRA30 Pneumatic Cylinder Head Spring Removal/Assembly Fixture**, s/n 36973, manual angle table • **KO D200S Rocker Arm Reamer**, s/n 3-344, single phase electric motor

'04 PETERSON SRA30

## FORKLIFT

**1988 CLARK GCS30MB, 4,075# Solid Tired Forklift**, s/n G138MB-1141-6963, 4 cylinder LP gas engine and shuttle transmission, 189" 3-stage mast, mast tilt, 54" forks, side shift, FOPS canopy, and 20x8 1/2x16 front and 17x6x12 1/8 rear tires. In fair condition with fair tires.

## BURN-OFF FURNACE AND CLEANING OVEN



**POLLUTION CONTROL ATR378, 950,000 BTU Burn-off Furnace**, s/n 5478, (2) Incinomite J121 natural gas fired burners, 8'x9'x9"H fire box, water spray system, digital temperature controller, and 12-hour timer

**POLLUTION CONTROL ATR88, 300,000 BTU Cleaning Oven**, s/n 1288, (2) Incinomite natural gas fired burners, 80"x58"x70"H fire box, Honeywell temperature controller, and 12-hour timer

**POLLUTION CONTROL ATR378, 950,000 BTU**

## AIR COMPRESSOR AND WELDERS



SULLAIR 12B-50H

**SULLAIR 12B-50H, 125 PSIG, 50HP Electric Air Compressor**, s/n 003-60784, 230-volt single phase electric motor, Gardner Denver RNC250CA3 air dryer, s/n GD250A2300211037

**HOBART Tigwave 250 Portable AC/DC Welder**, s/n 92WS27741  
 • **HOBART 200 Amp Portable Electric Welder**, s/n 5CW20676 •  
**LINCOLN Precision Tig 185 Stick/Tig Welder**, s/n 41040706781  
 • **LINCOLN SP-135 Plus Wire Feed Welder**, s/n U1060113737

## PRECISION TOOLING AND TEST EQUIPMENT



**WEBBER .100" to 4" Gauge Block Set** • **MITUTOYO .103" to 4" Gauge Block Set** • **WEBBER .050" to 4" Gauge Block Set** • **MITUTOYO 4-Piece 0" to 4" Digital Micrometer Set** • **FEDERAL 400B-3 Micrometer** • **PROVISION 100 Fiber Optic Scope** • **(2) SUNNEN Dial Bore Gauges** • **SUNNEN P-30 Gauge Probe Set** • **(30) Dial Gauge Indicators** • **(10) Dial Gauge Indicator Magnetic Bases** • **(3) FEDERAL Digital Electronic Indicators** • **FEDERAL Pocket Surf III Surface Tester**, with printer • **(2) INTRIMIK Digital Inside Bore Gauges** • **BROWN & SHARPE Manual Inside Bore Gauges** • **(2) RINCK Spring Testers** • **SHEFFIELD 541 Visual Gauge** • **Crankshaft Stand & Dial Indicator** • **(4) BROWN & SHARPE Inside Bore Micrometers** • **(4) STARRETT Tube Plug Assemblies** • **(6) Compression Testers** • **Spring Height Gauge** • **CENTRAL TOOLS Valve Steam Height Gauge** • **BROWN & SHARPE 1-2", 0-1", & (2) 2-3" Digital Micrometers** • **BOSCH 3" Precision Level** • **PERTHEN M4P Perthometer**