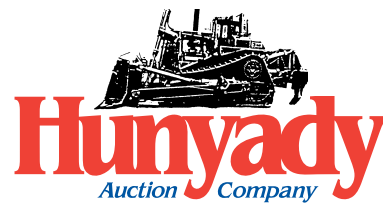


NEVER A BUYER'S PREMIUM!



**Siberini Excavating & Recycling
Middle Smithfield
Materials, Inc.**



NOTICE: Mr. Alan Siberini, owner of both Siberini Excavating & Recycling and Middle Smithfield Materials, Inc., has decided to liquidate equipment which is surplus to his present needs. All equipment is owned by Middle Smithfield Materials and Alan Siberini Excavating, with the exception of the Samsung SE450, which has been consigned by Univest National Bank, and will sell to the highest bidder, regardless of price and without Buyer's Premium! The Real Estate will be offered via Sealed Bid Auction.

LOCATION: The auction will be held at the quarry facility located at Lot 1, Sand Hill Road in Bushkill, Pennsylvania 18324, adjacent to US Route 209 South.

REAL ESTATE: The Real Estate will be offered via Sealed Bid Auction. All bids must be received in writing (contact Hunyady for a Sealed Bid Kit). Bid closing will be Wednesday, May 26 at 2:00pm. The owner reserves the right to accept/reject any or all bids received. Terms for the successful bidder will be 10% down payment upon award and settlement within (60) days.

TERMS: Payment in full is required on sale day by cash, certified funds, or check with a bank letter of guarantee. Sample letter of guarantee: "We hereby guarantee the payment of our customer written on his account up to \$_____ dollars for purchases at your auction sale on May 26, 2010." All guaranteed checks should be made payable to Hunyady Auction Co. **Never A Buyer's Premium!**

FINANCING: Financing is available; please contact Susan at Hunyady Auction Company for complete details.

SALES TAX: Since this contractor is selling items not normally sold in the course of his business, the Commonwealth of Pennsylvania considers this an isolated sale and does not require the auction company to collect sales tax. However, there will be PA sales tax collected on the Samsung SE450 being consigned by Univest National Bank, unless valid exemption certificate is provided.

INSPECTION: Items will be available for inspection beginning one week prior to the auction and continuing through sale day, from 8:00 a.m. until 5:00 p.m. The site will be closed Saturday and Sunday, May 22 and 23. Items may also be inspected sale day morning beginning at 7:00 a.m.

REMOVAL: After complete payment, all sale items may be removed on sale day as long as the removal activity is not disruptive to the sale and only until 5:00 p.m. Items may also be removed Friday, May 27 from 8:00 a.m. until 12:00 noon, and Tuesday, June 1 thru Thursday, June 3, 2010 from 8:00 a.m. until 5:00 p.m. **THE SITE WILL BE CLOSED Saturday, May 29 thru Monday, May 31 in observance of Memorial Day. All items must be removed no later than Thursday, June 3, 2010 at 5:00p.m.**

SALE SITE DIRECTIONS: From I-80: Exit #309 – Take U.S. Route 209 North towards Marshalls Creek for (9) miles. Turn left onto Sand Hill Road. Sale site will be immediately on the left. GPS Navigation: Enter cross streets of Route 209 and Sand Hill Road, Bushkill, PA.

AIRPORT INFORMATION: The area is serviced commercially through Lehigh Valley International Airport • Private Aviation is serviced through either Stroudsburg-Pocono Airport (N53) in East Stroudsburg, approximately (9) miles from auction site or Pocono Mountains Municipal Airport (KMPO) in Mount Pocono, approximately (30) miles from auction site.

MOTEL INFORMATION: Fernwood Hotel and Resort, located (1) mile from auction site at River Road and Route 209, Bushkill, PA (888) 337-6966 • Additionally, there are numerous hotels in and around the Stroudsburg area, approximately (12) miles from auction site.

**(BEGINNING MAY 17TH) SALE SITE PHONE: (570) 588-3155 SALE SITE FAX: (570) 588-2680
(ALL CALLS PRIOR TO MAY 17TH SHOULD BE PLACED TO HUNYADY MAIN OFFICE (215) 361-9099)**

REAL ESTATE

(45+/-) Acres • Bushkill, Pennsylvania

To be offered via Sealed Bid Auction. Bid closing Wednesday, May 26, 2010 (auction day) at 2:00pm EDT. Please contact auction company for complete bid kit.

Address: Lot #1, Sand Hill Road, Bushkill, PA 18324; Monroe County; East Stroudsburg School District. The property has frontage and exposure to US Route 209 (Southbound Side)

Zoning: Industrial with mining permits and recycling permits

Improvements: On-Site water and sewer • 45'x90' galvanized Quonset type shop building with 4' poured concrete walls and (2) 10'x14' bay doors, 110/220 volt electric service • 14'x70' mobile home office trailer, (2) offices, kitchen, lavatory, propane HVAC, 110 volt electric service, telephone and fax lines.



PARTS TRUCKS AND MISCELLANEOUS

Several Parts Trucks to include: '70 AUTOCAR Roll-Off; '81 INT'L Knuckleboom; MACK B-61; MACK B-67; GMC 6500 Fuel Truck; FORD 800 Cabover; '96 FORD Service Truck; FWD Pumper Truck; INTERNATIONAL Diesel Engine • Miscellaneous Truck & Equipment Tires • (2) MACK Hoods • (2) Aluminum Bulkheads • 36" Flattop Sleeper • MACK 350HP Diesel Engine (Rebuilt)

ABSOLUTE AUCTION
Wednesday, May 26, 2010 - 9:00 AM
SURPLUS EQUIPMENT



**Siberini Excavating & Recycling
Middle Smithfield Materials, Inc.**
**Bushkill, Pennsylvania
(Pocono Mts./Stroudsburg Area)**

97 JD 744H AND '00
830 TROMMEL SCREEN



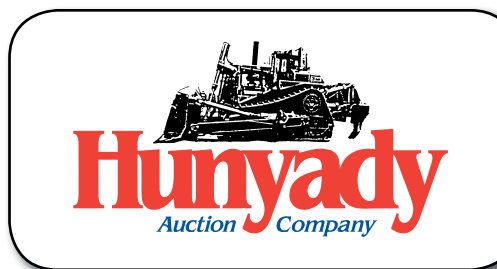
'96 CAT 980G



'96 MACK CL713



'92 CAT 235D



1440 COWPATH RD. • HATFIELD, PA 19440
215/361-9099 • Fax: 215/361-9212

PRE-SORTED
FIRST CLASS MAIL
US POSTAGE
PAID
HAVERTOWN, PA
PERMIT #45



RUBBER TIRED LOADERS

1996 CATERPILLAR Model 980G Rubber Tired Loader, s/n 2KR00732, powered by Cat 3406 diesel engine and powershift transmission, equipped with general purpose loader bucket with bolt-on cutting edge, bucket scale, Command steering, enclosed ROPS cab with heat and air conditioning, light package, and 29.5R25 tires. In good condition with good to very good front and good rear tires.



'96 CAT 980G 2KR00732

1996 CATERPILLAR Model 980G Rubber Tired Loader, s/n 2KR00775, powered by Cat 3406 diesel engine and powershift transmission, equipped with general purpose loader bucket with teeth, bucket scale, Command steering, enclosed ROPS cab with heat and air conditioning, and 29.5-25 tires. In good condition with fair front and good rear tires.



96 CAT 980G 2KR00775

1997 JOHN DEERE Model 744H Rubber Tired Loader, s/n DW744HX563863, powered by John Deere diesel engine and powershift transmission, equipped with general purpose loader bucket with bolt-on cutting edge, hydraulic quick disconnect, enclosed ROPS cab with heat and air conditioning, and 26.5-25 tires. In good condition with fair front and good rear tires.



'97 JOHN DEERE 744H

1995 JOHN DEERE Model 544G Rubber Tired Loader, s/n DW544GD551721, powered by John Deere diesel engine and powershift transmission, equipped with general purpose loader bucket, auxiliary hydraulics, enclosed ROPS cab with heat, and 20.5-25 tires. In good condition with very good front and fair and good rear tires.



'95 JOHN DEERE 544G

CATERPILLAR Model 980B Rubber Tired Loader, s/n 89P933, powered by Cat diesel engine and powershift transmission, equipped with general purpose loader bucket with bolt-on cutting edge, enclosed ROPS cab, and 26.5-25 tires. In fair condition with fair to poor and good tires.

JRB 12 Cubic Yard Light Material Bucket (Fits John Deere 744H)

TUB GRINDER, TROMMEL SCREENS, AND CONVEYOR



'00 POWERSCREEN 830

2000 POWERSCREEN Model 830 Portable Trommel Screen, s/n 9202224, powered by Deutz diesel engine, equipped with 46"x16" hopper with bottom conveyor, 8"x30" trommel screen, 40"x22" side discharge conveyor, mounted on tri-axle trailer, with 11R22.5 tires. In good condition with good tires.

1995 POWERSCREEN Model 616 Portable Trommel Screen, s/n 9102062, powered by Deutz diesel engine, equipped with 4x13' dump hopper with hydraulic grizzly, 42"x19' feed conveyor, 6"x16" trommel screen, 30"x18" side discharge conveyor, 36"x21" rear folding discharge conveyor, and 385/65R22.5 tires. In fair to good condition with fair tires.

MORBARK Model 1400 Portable Tub Grinder, s/n 575-015, powered by Cat 3412 diesel engine, equipped with 32"x25" rear folding discharge conveyor, Morlift 450 hydraulic boom with rotating log grapple, hydraulic leveling enclosed operators cab with heat and air conditioning, mounted on tri-axle trailer, with (2) hydraulic outriggers and 8.25R15 tires. In good condition with fair to good tires.

(6) 1/2" Screens (For 830 Trommel Screen)
 • (1 Set) 4" Debaggng Screens and Knives (For 830 Trommel Screen) • 30"x45' Hydraulic Stacking Conveyor, with hydraulic raise and lower • POWERSCREEN 30"x50' Hydraulic Radial Stacking Conveyor, s/n 5408319, equipped with hydraulic raise and lower • CEDAR-RAPIDS 30x30 Roll Crusher, s/n 28628



MORBARK 1400

HYDRAULIC EXCAVATORS AND SHOVEL



1992 CATERPILLAR Model 235D Hydraulic Excavator, s/n 8KJ00083, powered by Cat 3306 diesel engine and hydraulic drive, equipped with 12' dipper stick, 40" digging bucket, auxiliary hydraulics, 16" crawlers, and 30.5" TBG pads. In good condition with good undercarriage.

'92 CAT 235D



'87 CAT 235B

1987 CATERPILLAR Model 235B Hydraulic Excavator, s/n 7WC00611, powered by Cat 3306 diesel engine and hydraulic drive, equipped with 12' dipper stick, 48" digging bucket, 16" crawlers, and 36" TBG pads. In fair to good condition with fair to good undercarriage.



'91 CAT 225D

CATERPILLAR Model 225 Hydraulic Excavator, s/n 51U2184, powered by Cat diesel engine and hydraulic drive, equipped with 10' dipper stick, 36" digging bucket, auxiliary hydraulics, 147" crawlers, and 21.5" TBG pads. In fair condition with fair to good undercarriage. (Swivel Out-Needs Replaced)



'97 SAMSUNG SE450LC

1990 KOMATSU Model PC220LC Hydraulic Excavator, s/n A70078, powered by Komatsu SA6D diesel engine and hydraulic drive, equipped with 10' dipper stick, Pemberton 30" digging bucket, auxiliary hydraulics, 14'10" crawlers, and 32" TBG pads. In fair condition with poor to fair undercarriage. (Boom Welds)

1992 KOMATSU Model PC150-5 Hydraulic Excavator, s/n 6691, powered by Komatsu 56D95L-1 diesel engine and hydraulic drive, equipped with 8'4" dipper stick, Esco 30" digging bucket, auxiliary hydraulics, mechanical thumb attachment, 12' crawlers, and 24" TBG pads. In fair to good condition with fair to good undercarriage.



'92 KOMATSU PC150-5

HALA Model AE280LC Hydraulic Excavator, s/n 2005, powered by Cummins C8.3-C diesel engine and hydraulic drive, equipped with 10'4" dipper stick, auxiliary hydraulics, 16'3" crawlers, and 32" TBG pads. In fair condition with fair to good undercarriage. (Bad Engine - Not Running)



'88 LIEBHERR R952HD

STUMP SPLITTERS, DEMO HAMMERS, AND BUCKETS

Hydraulic Stump Splitter Attachment (Cat 235D) • Hydraulic Stump Splitter Attachment (Komatsu PC220LC) • JRB Hydraulic Quick Coupler (Komatsu PC220) • 1990 NPK Model 16X Hydraulic Demo Hammer, s/n 27210, with quick disconnect. In good condition. (Cat 225D) • **KENT Hydraulic Demo Hammer**. In fair to good condition. (Cat 225) • **ALLIED 5-Tine Grapple (Hala AE280LC) • DIGGING BUCKETS: 52" (Cat 235B) • 24" (Cat 225DL) • 42" Digging Bucket (Komatsu PC150) • CAT 225 Digging Buckets: 28", 32", 40", 24" Trenching Bucket**



(1) OF (2) HYDRAULIC STUMP SPLITTERS

MOTOR SCRAPER



INTERNATIONAL Model ET-200 Elevating Motor Scraper, s/n 540-672, powered by International 6 cylinder diesel engine and powershift transmission, equipped with 11.25 ton, 9 cubic yard scraper bowl, canopy, and 23.5-25 tires. In good condition with fair to good tires.

INT'L ET-200

CRAWLER TRACTORS AND CRAWLER LOADER

INTERNATIONAL Model TD20C Crawler Tractor, s/n 4260125V026132, powered by International diesel engine and powershift transmission, equipped with semi-U blade with tilt, drawbar, 3rd valve, open ROPS canopy, and 22" SBG pads. In fair to good condition with fair undercarriage.



CAT D6 AND 977K

CATERPILLAR Model D6 Crawler Tractor, s/n Unknown, powered by Cat diesel engine and direct drive transmission, equipped with straight blade with tilt, drawbar, open canopy, and 22" SBG pads. In fair condition with poor to fair undercarriage.

CATERPILLAR Model 977K Crawler Loader, s/n 11K2107, powered by Cat diesel engine and powershift transmission, equipped with general purpose loader bucket with teeth, enclosed cab, and 18" TBG pads. In fair condition with poor to fair undercarriage.

TRUCK TRACTORS



'94 WESTERN STAR 4964F

1994 WESTERN STAR Model 4964F Tandem Axle Truck Tractor, powered by Cat 3406C-425, 425HP diesel engine and Fuller Roadranger 13 speed transmission, equipped with 38,000# rears, 12,000# front axle, engine brake, wetline, 60" stand-up sleeper, airslide 5th wheel, aluminum wheels, heated mirrors, power passenger window, and 11R24.5 tires. In good condition with good tires.



'90 MACK SUPER LINER

1990 MACK Model RW713 Super Liner Tandem Axle Truck Tractor, powered by Mack E7-400, 400HP diesel engine and Eaton Fuller 8LL, 10 speed transmission, equipped with wetline, airslide 5th wheel, Dynatard engine brake, aluminum wheels and fuel tanks, heated mirrors, air conditioning, and 11R24.5 tires. In good condition with good tires.

FUEL TRUCK, STEP VAN, UTILITY, AND PICKUP TRUCKS



'86 GMC FUEL TRUCK

1986 GMC Model Brigadier Single Axle Fuel Truck, powered by Cat 3208 diesel engine and 5 speed transmission with 2 speed rear, equipped with 2,000 gallon aluminum fuel tank, hose with reel, Midcom meter, 21,000# rears, 12,000# front axle, 33,000# GVWR, air brakes, and 11R22.5 tires. In good condition with good tires.



'86 CHEVY SERVICE VAN

1986 CHEVROLET Step/Service Van, powered by diesel engine and automatic transmission, equipped with Atlantico 13' aluminum van body, shelving and tool boxes, gas powered air compressor, gas powered Start-All, power inverter, 14,000# GVWR, and 8R19.5 tires. In fair to good condition with good tires.

1999 GMC Model 3500 Utility Truck, powered by 6.5 diesel engine and automatic transmission, equipped with 11,000# GVWR. In good condition with good tires. (POSSINGER)

1998 FORD Model F-250XLT, 4x4 Pickup Truck, powered by Powerstroke diesel engine and automatic transmission, equipped with 8' bed, cross toolbox, power windows and locks, and 265/75R16 tires. In fair condition with fair tires.

1993 FORD Model Ranger XLT, 4x4 Extended Cab Pickup Truck, powered by 6 cylinder gas engine and automatic transmission, equipped with 6' bed, power windows and locks, and 31x10.50R15 tires. In fair condition with fair tires.

FISHER 7'6" Unimount Snowplow

DUMP TRUCK, DUMP TRAILERS, AND END DUMP



'96 MACK CL713

1996 MACK Model CL713 Tri-Axle Dump Truck, powered by Mack E7-454 diesel engine and Maxitorque T2180, 18 speed transmission, equipped with Bibeau 17' steel dump body with electric tarp, single chute, 44,000# rears, 20,000# front axle, engine brakes, tow package, aluminum wheels, air conditioning, 385/65R22.5 front and airlift 3rd axle tires and 11R24.5 rear tires. In good condition with fair tires.



(2) OF (3) DUMP TRAILERS

1989 COBRA 38' Tandem Axle Frameless Aluminum Dump Trailer, equipped with 2-way tailgate with coal chute, air ride suspension, 80,000# GVWR, and 11R24.5 tires. In good condition with fair tires.

COBRA 32' Tandem Axle Aluminum Dump Trailer, equipped with 2-way tailgate with coal chute, steel frame, spring suspension, and 11R24.5 tires. In good condition with poor tires.

1995 MONTONE Model 1972, 26' Tandem Axle Aluminum Dump Trailer, equipped with spring suspension, 67,500# GVWR, and 11R22.5 tires. In good condition with poor to fair tires.

1990 DORSEY 30' Tandem Axle Steel Dump Trailer, equipped with spring suspension, manual tarp, barn door tailgate, and 11R24.5 tires. In fair condition with good tires.

MACK Model M20X, 20 Ton End Dump, s/n 20298, powered by Detroit 6-71 diesel engine and powershift transmission, equipped with 16.00-25 tires. In fair condition with good to poor tires. (Recently Rebuilt Engine)

PORTABLE MULCH DYE MIXER, LEAF VACUUM, AIR COMPRESSORS & WELDERS



FECON BMD1000 DYE MIXER

FECON Model BMD1000 Portable Mulch Dye Mixer, s/n 2223, powered by John Deere 4039 diesel engine, equipped with 66"x12" hopper, paddle mixer with 14" and 16" augers, (3) 9' auger discharges, and 9.50-16.5 tires. In good condition with good tires.

(3) Totes of Mulch Dye (1 Red, 2 Brown)



TARRANT LEAF VAC

TARRANT Portable Leaf Vacuum, s/n CD20Z-V4476FMO1996, powered by John Deere 4039DF001 diesel engine and Rockford PTO, equipped with 12' steel dump body, 16" vac hose, mounted on tri-axle with 8-14.5 tires. In good condition with good tires.

1991 INGERSOLL-RAND 250 CFM Portable Air Compressor, s/n 193160U91364, powered by John Deere 4039DF diesel engine, equipped with front mounted hose reels and 225/75R15 tires. In good condition with good tires.

1989 ATLAS COPCO Model 185 CFM Air Compressor, s/n 126903, powered by Deutz diesel engine. In good condition. (POSSINGER)

P&H Model WNG-300B, 300 Amp Arc Welder, s/n 38571H1, powered by 4 cylinder gas engine. In fair condition.

Model 3016-E Skid Mounted Welder, s/n Unknown, powered by Detroit 3-71 diesel engine, equipped with 230 volt, 60 Hz. In fair condition.

LOWBOY, WALKING FLOOR AND TAG-A-LONG TRAILERS

1987 FRUEHAUF 50 Ton Tri-Axle Lowboy Trailer, equipped with ground bearing detachable goose-neck, 8'6"x24'6" level deck, 13' over axles, spring suspension, wetline, chain dogs, and outriggers. (Restoration In Progress, Sandblasted and Painted, But No Decking and Missing Tires On Two Axles)

2000 MAC 45' Tandem Axle Walking Floor Trailer, equipped with Keith walking floor, spring suspension, manual roll tarp, rear swing door, 80,000# GVWR, and 285/75R24.5 tires. In good condition with good tires.



'87 FRUEHAUF 50 TON LOWBOY



'95 PEERLESS 42' WALKING FLOOR

1995 PEERLESS Model 42-CTS, 42' Tandem Axle Aluminum Walking Floor Trailer, equipped with Keith walking floor, spring suspension, sliding tandems, manual roll tarp, rear swing doors, and 11R24.5 tires. In good condition with fair to good tires.

1998 TRAILING Model TKT50-2800, 25 Ton Tri-Axle Tilt Deck Trailer, equipped with 8'6"x4' stationary deck, 24' level tilting deck, 12" folding beavertail, chain dogs, air brakes, and 215/75R17.5 tires. In good condition with fair to good tires.

Tandem Axle Tag-A-Long Trailer, equipped with 6'x14' steel level deck and 225/75R15 tires. In fair condition with fair tires. (No Title)

1957 FRUEHAUF 6,525 Gallon Aluminum Tank Trailer
 (4) Van/Storage Trailers • Office Trailer. In fair to poor condition.