

ABSOLUTE AUCTION COMPLETE LIQUIDATION

KENNETH CROWL, INC.

*Masonry Contractor
Established 1954*

FRIDAY, OCTOBER 22, 2010 • 9:00 A.M. EDT



PETTIBONE FORKLIFTS

Elysburg, Pennsylvania (Danville/Shamokin Area)



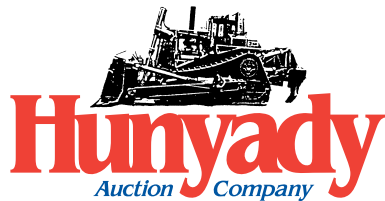
DUMP AND FLATBED TRUCKS



VEHICLES



MAYCO GROUT PUMP



1440 COWPATH RD. • HATFIELD, PA 19440
215/361-9099 • Fax: 215/361-9212

PRE-SORTED
FIRST CLASS MAIL
US POSTAGE
PAID
HAVERTOWN, PA
PERMIT #45



NEVER A BUYER'S PREMIUM! NO MINIMUMS • NO RESERVES

Notice: After (56) years in the commercial masonry business, Mr. David Crowl has decided to retire and pursue other interests. Everything in the auction is owned by Kenneth Crowl, Inc. and will positively sell to the highest bidder regardless of price! (Real Estate will be sold subject to owners confirmation)

Location: The auction will be held at 61 Tyler Avenue in Elysburg, Pennsylvania 17824.

Terms: Payment in full is required on sale day by cash, certified funds, or check with a bank letter of guarantee. Sample letter of guarantee: "We hereby guarantee the payment of our customer written on his account up to \$ _____ dollars for purchases at your auction sale on October 22, 2010." All guaranteed check should be made payable to Hunyady Auction Co. Never a Buyer's Premium!

Financing: Financing is available on select items; please contact Susan at Hunyady Auction Company for complete details.

Sales Tax: Since this contractor is selling items not normally sold in the course of business, the Commonwealth of Pennsylvania considers this an isolated sale and does not require the auction company to collect sales tax.

Inspection: Items will be available for inspection beginning one week prior to sale day, from 8:00 a.m. until 5:00 p.m. Items may also be inspected sale day morning beginning at 7:00 a.m.

Removal: After complete payment, all sale items may be removed on sale day as long as the removal activity is not disruptive to the sale and only until 5:00 p.m. Items may also be removed October 25th thru 27th from 8:00 a.m. until 5:00 p.m. All items must be removed no later than Wednesday, October 27th, 2010 at 5:00 p.m.

Sale Site Directions: From Route 80: Take Exit 224 (Route 54 East/Danville). Travel (11.7) miles on Route 54 East through Danville to Elysburg. Turn right onto Route 487 South. Proceed (0.5) miles to Fairview Street and turn left. Sale site is (0.1) miles on the right.

From Route 61 North or South: Turn onto Route 487 North in Paxinos. Travel (1.8) miles to Fairview Street and turn right. Sale site is (0.1) miles on the right.

Motel Information: Both hotels are located off the Danville exit of Route 80 and exit onto Route 54 East. Hampton Inn: (570) 271-2500 • Best Western: (570) 275-5750

SALE SITE PHONE: (570) 672-2551 SALE SITE FAX: (570) 672-2654

FORKLIFTS AND ATTACHMENTS

2000 PTTIBONE 8036, 8,000# Rough Terrain Forklift, s/n 13, Cummins B3.9-C diesel and powershift trans, 36" lift height, 48" block tines, 3-way steer, frame leveling, auxiliary hydraulics, ROPS canopy, and 13.00-24 tires. In good condition with fair tires.

1996 PTTIBONE B68C, 8,000# Rough Terrain Forklift, s/n 7-261, Cummins 4BT3.9-C diesel and powershift trans, 36" lift height, 48" block tines, 3-way steer, frame leveling, auxiliary hydraulics, ROPS canopy, and 13.00-24 tires. In good condition with very good tires.

1989 PTTIBONE C-8000, 8,000# Rough Terrain Forklift, s/n 6-402, Cummins 4BT-3/9 diesel and shuttle trans, 48" lift height, 48" block tines, 3-way steer, frame leveling, ROPS canopy, (2) outriggers, and 13.00-24 tires. In good condition with fair to good tires.

1988 PTTIBONE B-68, 8,000# Rough Terrain Forklift, s/n 6-294, Cummins 4BT-3.9 diesel and shuttle trans, 36" lift height, 48" block tines, 4-way steer, frame leveling, ROPS canopy, and 13.00-24 tires. In good condition with good tires.

1989 JCB 505-22, 5,500# Rough Terrain Forklift, s/n 505-22/562389, Perkins diesel and powershift trans, 22" lift height, 48" block tines, 1.25 cubic yard bucket, 3-way steer, frame leveling, enclosed ROPS cab, and 15.5-25 tires. In good condition with fair to good tires.

1993 KOMATSU FG25T-11, 3,990# Solid Tired Forklift, s/n 459572A, Nissan 4 cyl propane and shuttle trans, 188" 3-stage mast and 40" forks. In good condition with good tires. (3) 1,000# Man Baskets • 2,000# Man Basket • STAR Extendable Forklift Boom, 6,000# at 7' and 2,900# at 10'

ALL TERRAIN VEHICLE, SPORT UTILITY VEHICLE, TRUCKS AND TRAILERS

2004 YAMAHA Rhino 660, 4x4 All Terrain Vehicle, gas and powershift trans, manual dump body, front mounted winch, roll bar, tow hitch, roof kit, and light package. In good condition with good tires.

2002 FORD Explorer, 4x4 Sport Utility Vehicle, V-6, 4.0L gas and auto trans, full power package, ac, and AM/FM CD player. In good condition with good tires. (Odometer Reads 109,855 Miles)

2003 FORD F-250 Super Duty, 4x4 Crew Cab Pickup Truck, Triton 5.4L, V-8 gas and auto trans, 7' bed, ac, power windows and locks, and AM/FM CD player. In good condition with good tires.

1999 FORD F-250XL Super Duty, 4x4 Pickup Truck, Triton V-8 gas and auto trans, 8' bed, Sno-Way 8' power angle snow plow with light package and quick disconnect, 100 gallon fuel tank with 12 volt pump, ac, power windows and locks, and AM/FM CD player. In good condition with good tires.

1999 FORD F-150, 4x4 Extended Cab Pickup Truck, Triton V-8 gas and auto trans, ac, power windows, and AM/FM cassette. In good condition with good tires.

1994 GMC 3500HD Single Axle Dump Truck, V-8 gas and 5 spd trans, 10'6" steel dump body, tow package, dual rear wheels, and 225R19.5 tires. In good condition with good tires.

2000 MITSUBISHI FUSO FK Single Axle COE Stake Body Truck, Mitsubishi 6 cyl diesel and 6 spd trans, 16' bed with stake sides, brake, 23,000# GVWR, and 9R22.5 tires. In good condition with good tires.

1994 MITSUBISHI FEHD Single Axle COE Stake Body Truck, Mitsubishi 4 cyl diesel and 5 spd trans, 14' bed with stake sides, brake, 13,500# GVWR, and LT235/85R16 tires. In good condition with good tires.

1989 FORD Club Wagon XL Window Van, V-8 gas and auto trans, (3) rear seats and ac. In fair to good condition with fair to good tires.

2007 PEQUEA 1 Ton Single Axle Tag-A-Long Trailer, 10' deck and 5' ramps. In good condition with good tires.

2000 WORTHINGTON Single Axle Aluminum Tag-A-Long Trailer, 6'x8' deck, side ramps, and 2,220# GVWR. In good condition with good tires.

1987 MARK LINE 8'x27' Single Axle Office Trailer, baseboard heat. In fair to good condition with fair to good tires. (No Title)

MAR VAL 8'x26' Single Axle Office Trailer. In fair to good condition with fair to good tires. (No Title)

CONCRETE AND MASONRY EQUIPMENT

MAYCO C-30HD Grout Pump, s/n 990822, Wisconsin 4 cyl gas, slick line and clamps, mounted on (2) pneumatic tires. In good condition with good tires. (Meter Reads 275 Hours)

GROUT HOG GHP75 Grout Delivery System, s/n GPH7506B91, Honda 13HP gas, 5' discharge auger, 1/3 cubic yard capacity, remote control, and forklift pockets. In good condition.

EDCO 20" Gas Powered Wet Masonry Saw with stand • (2) CLIPPER 20" Gas Powered Wet Masonry Saws with stands • (5) CLIPPER 20" Electric Wet Masonry Saws with stands, 220 volt • CLIPPER 12" Electric Wet Masonry Saw, 110 volt • (2) Replacement 220 Volt Motors • (2)

STONE Gas Powered Hydraulic Reversible Drive Mortar Mixers • (8) STONE Gas Powered Mortar Mixers • STONE Electric Mortar Mixer • HYDRASPLIT Hydraulic Stone Splitter • (8) BONTPOOL Masonry "Story Poles" • (13) Mud Bins • (42) Mud Tubs • (19) Mud Tub Stands • (9) Wheelbarrows • (20) Block Carts • (6) Brick Carts • (2) Brick Splitters • (20) Brick Tongs

SCAFFOLD AND PLANKING

(156 Pieces) **BIL-JAX 6' Walk-Through Scaffolding • (49 Pieces) BIL-JAX 5' Scaffolding • (21 Pieces) BIL-JAX 3' Scaffolding • (23 Pieces) BIL-JAX "Turkey Leg" Scaffolding • (65 Pieces) BIL-JAX Scaffolding Outriggers • (14 Pieces) BIL-JAX End Guard Panels • (79 Pieces) BIL-JAX Hand Rail Posts • (35 Pieces) BIL-JAX Canopy Cover Posts • BIL-JAX Cross Bucks and Hand Rail Tubing • (8 Sections) MIGHTY Scaffolding • (185 Pieces) MIGHTY Scaffolding Extensions • (87 Pieces) MIGHTY Back Outriggers • (49 Pieces) MIGHTY Front Outriggers • (20 Pieces) MIGHTY Cranking Wheels • (3) MIGHTY Scaffold Lifting Bars • (3) MIGHTY Scaffold Stairwell Baskets • (225 Pieces) 16' Laminated Scaffold Planking • (154 Pieces) 8' Laminated Scaffold Planking • (92 Pieces) 6'8" Laminated Scaffold Planking for Mighty transverse sections • Miscellaneous Lengths of Laminated Planking • (30) Scaffold Castors**

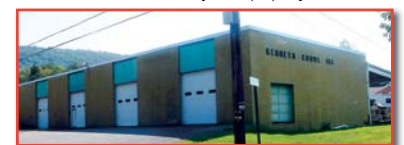
CONTRACTORS AND SHOP TOOLS AND MATERIALS

HEWLETT PACKARD Design Jet 500 Plotter • GTCO CalComp Super L III Digitizer • MILLER Blue Star 2E Welder/Generator, Tecumseh XL electric start gas • KARCHER HD5200B Gas Powered Steam Pressure Washer • HOTSYS 550B, 1000 PSI Steam Pressure Washer • Power Washer with Briggs & Stratton 6.5HP motor • STIHL TS360, 12" Demo Saw • STIHL TS420, 14" Demo Saw • STIHL TS400, 14" Demo Saw • LASER MARK LMH Series Auto Self-Leveling laser • (2) 1/2" Electric Drills • (2) DEWALT 18 Volt Cordless Drills • MAKITA 18 Volt Cordless Drill • (2) BOSCH 18 Volt Cordless Drills • KLICK Fast Rivet Gun • (5) BOSCH 4" Angle Grinders • HITACHI Electric Impact Gun • BOSCH 6" Angle Grinder • (5) Circular Saws • MAKITA Electric Concrete Vibrator • MILWAUKEE 8" Hand-Held Masonry Cutter • (3) 3/8" Electric Drills • SEARS 1/2HP Pedestal Grinder • 3/4" Socket Set • 1/2" Pneumatic Impact Driver • Torch Set with cart • BOSCH Chipping Hammer • MARQUETTE Arc Welder • BOSCH Hammer Drill/Chipping Hammer • DEWALT Hammer Drill/Chipping Hammer • (3) RAMSEY Powder Fastening Guns • HILTI Hammer Drill/Chipping Hammer • 12 Ton Bottle Jack • AIRCO Arc Welder • 110/220 Volt Power Inverter/Amplifier • (7) Fiberglass Job Boxes • (8) KNAK Job Boxes • WERNER 32' Aluminum Extension Ladder, 200# capacity • WERNER 32' Aluminum Extension Ladder, 300# capacity • GREENBUL 32' Fiberglass Extension Ladder, 300# capacity • WERNER 32' Fiberglass Extension Ladder, 375# capacity • WERNER 24' Fiberglass Extension Ladder, 300# capacity • WERNER 40' Fiberglass Extension Ladder, 300# capacity • LOUISVILLE 40' Fiberglass Extension Ladder, 300# capacity • (2) 40' Wood Extension Ladders • PROBST Barrier Lifter • (3) 300 Gallon Skid Mounted Fuel Tanks with manual pumps • MICHIGAN 8' Step Ladder • WERNER 8' Step Ladder • LOUISVILLE 16'x2' Pick Board • (7) Rolling Dump Trash Carts • (3) Pallet Jacks • GRAND 6058 Lift Stacker • (2) 3/16" Gas Powered Cable Winders, 400# capacity • (12) Adjustable Door Installation Buck Ups • JACOBSEN 2-Cycle Snow Thrower • PITTSBURGH FORGE 2 Ton Chain Hoist • 3 Ton Chain Block Chain Hoist • JET L-70 2 Ton Chain Hoist • JET 2 Ton Electric Chain Hoist • 12 Ton Hydraulic Shop Press • CRAFTSMAN 22" Weed Trimmer, 6.5HP electric start gas motor • BOSCH Dustless Grinder with Chop Vac attachment, with dustless hand grinder attachment • (2) Ratchet Come-A-Longs • (6) Drywall Screw Guns • Timing Light • BLACK & DECKER Pneumatic Chipping Gun • (5) 3/8" Socket Sets • 250 Gallon Poly Tank • 300 Gallon Poly Tank with lifting frame • (144) 12"x12" Glass Blocks (48 boxes/3 per box) • (14 Bags) Zonolite Masonry Insulation • (36 Bags) Masonry Mix • (11 Bags) Mortar Mix • 3,000# Bulk Type S Mortar Mix • (2) 50 Gallon Drums of Muratic Acid • (2) 50 Gallon Drums of Stone Cleaner • (3) Concrete Blankets • Large Quantity of Rapid Control Joints • (4) Boxes of Cell Vents • (3) Boxes of Various Style Weeps • (29 Coils) 1/4"x71" Steel Cable • (4) Stone Clamps • (7) Lewis Pins • (200) Tarp Clips • (60) 3/4"x12" Wedge Anchors, (6 boxes/10 per box) • (1 Case/12 Tubes) Firestop Sealant • (8) Bottles Rheopel Mortar Admixture • (3 Rolls) Copper Flashing, approx. 100' per roll • (5000) #187 Seismicclips • (8 Sections) 10"x12" Roller Conveyor • (36 Rolls @ 50') Mortar Net • Large Quantity Wall Covers and Tarps • (200) Glass Block Spacers (8 bags/25 per bag) • Large Quantity Garden Hoses • (5) Hemp Rope and Pulley Tackle Sets • Hemp Block and Tackle • SEARS/PENSKE Automotive Analyzer • (8) Chain Binders • (7) Retractable Safety Harnesses • (4) Stone Strapping Tools • (2) Portable Propane Heaters • Miscellaneous Lifting Straps • (3) Tripod Stands • HOWE RICHARDSON 100# Platform Scale • HOMELITE 1.5" Gas Powered Water Pump • Miscellaneous Hand Tools consisting of: Hand Saw, Hammers, Grease Guns, C-Clamps, Shovels, Picks, Ice Scrapers, Pump Sprayers, Pipe Wrenches

REAL ESTATE (Subject to Owner's Confirmation)

61 Tyler Avenue, Ralpho Township, Northumberland County, Elysburg, Pennsylvania 17824

(1.377 Acres/60,000sq.ft. +/-) with 7,100sq.ft. Shop and Warehouse and 1,453sq.ft. Office Building. Zoning: C1/Commercial. City sewer and water. Term: 10% down on auction day with (90) day settlement.



FRIDAY, OCTOBER 22, 2010 • 9:00 A.M. EDT • ELYSBURG, PENNSYLVANIA

PA Auction License No.: AY000281 While information is believed to be accurate, all items will be sold "As-Is, Where-Is" without guarantee or warranty. A physical inspection is suggested.