

ABSOLUTE AUCTION

COMPLETE LIQUIDATION

Godin Mining, Inc.

**Thursday,
May 20, 2010
10:00 AM**



**Freidens,
Pennsylvania
(Somerset Area)**



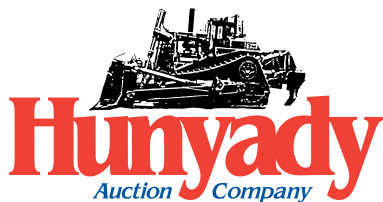
02 IHC 9900i



CAT D10'S



CAT 988B

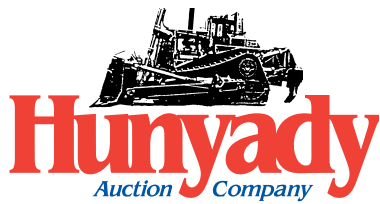


1440 COWPATH RD. • HATFIELD, PA 19440
215/361-9099 • Fax: 215/361-9212

PRE-SORTED
FIRST CLASS MAIL
US POSTAGE
PAID
HAVERTOWN, PA
PERMIT #45



NEVER A BUYER'S PREMIUM!



Godin Mining, Inc.

Please visit our website at
www.hunyady.com

Notice: David Godin, owner of Godin Mining, Inc., has decided to liquidate all equipment assets and pursue other interests. All equipment is owned by Godin Mining and will sell to the highest bidder regardless of price!

Location: The auction will be held at Godin Mining's Acosta Job, located at 377 Twin Hills Road, Freidens, Pennsylvania 15541

Terms: Payment in full is required on sale day by cash, certified funds, or check with a bank letter of guarantee. Sample letter of guarantee: "We hereby guarantee the payment of our customer written on his account up to \$_____ dollars for purchases at your auction sale on May 20, 2010." All guaranteed checks should be made payable to Hunyady Auction Co. Never A Buyer's Premium!

Financing: **Financing is available; please contact Susan at Hunyady Auction Company for complete details.**

Sales Tax: Since this contractor is selling items not normally sold in the course of his business, the Commonwealth of Pennsylvania considers this an isolated sale and does not require the auction company to collect sales tax.

Inspection: Items will be available for inspection beginning one week prior to the auction and continuing through sale day, from 8:00 a.m. until 5:00 p.m. The site will be closed Saturday and Sunday, May 15 and 16. Items may also be inspected sale day morning beginning at 7:00 a.m.

Removal: After complete payment, all sale items may be removed on sale day as long as the removal activity is not disruptive to the sale and only until 5:00 p.m. Items may also be removed Friday, May 21, and Monday, May 24 thru Thursday, May 27, 2010 from 8:00 a.m. until 5:00 p.m. All items must be removed no later than Thursday, May 27, 2010 at 5:00 p.m.

Sale Site Directions: **FROM PA TURNPIKE EXIT 110** (US 219/Somerset/Johnstown): Through tollgate proceed (0.2) miles to 2nd traffic light and turn left onto PA Route 601 North. Continue (3.5) miles and turn right, proceed on Route 601 North (3.3) miles and turn left onto Twin Hills Road. Continue (0.5) miles to sale site on left.

FROM US ROUTE 219: Exit at "Toll Road/ Interstate 70/Interstate 76/Pittsburgh/Harrisburg" and follow ramp to traffic light and turn right onto PA Route 601 North. Continue (0.9) miles and turn right. Continue on Route 601 North (3.3) miles and turn left onto Twin Hills Road. Proceed (0.5) miles to sale site on left.

Airport Information: Commercial and Private air travel serviced through John Murtha Johnstown-Cambria County Airport (JST) (814) 536-0002. Rental cars are available.

Motel Information: (All Hotels Located At Exit 110 of PA Turnpike): Holiday Inn Somerset; 202 Harmon Street, Somerset, PA 15501; (814) 445-9611 • Hampton Inn Somerset; 324 Laurel Crest Road, Somerset, PA 15501 (814) 445-9161 • Comfort Inn Somerset; 202 Harmon Street, Somerset, PA 15501; (814) 445-9611 • Days Inn; 220 Waterworks Road, Somerset, PA 15501; (814) 445-9200 • Super 8; 125 Lewis Drive, Somerset, PA 15501; (814) 445-8788

SALE SITE PHONE: (215) 361-9099 SALE SITE FAX: (215) 361-9212



These two words are the cornerstone that supports our companies. They are critical to providing the best possible service at the fairest cost.

Our commitment to the machinery and equipment industries, and our customers, dictates these high standards to which we aspire. We believe our dedication to these principles will always allow us to provide the very best in auctions and appraisals!

Expertise & Integrity

Michael J. Hunyady
Michael J. Hunyady
President

CRAWLER DRAGLINE AND DRAG BUCKETS



MANITOWOC 4600

undercarriage. (3,940 Hours On Small Engine Rebuild; 6,505 Hours on Big Engine Rebuild) (Inspection Report From Jefferson Machine Available)

ESCO 7 Cubic Yard Drag Bucket, equipped with some hardware. In fair condition • **ESCO 7 Cubic Yard Drag Bucket**, equipped with chain. In fair to good condition (No Bridle) (Shank Broken Out Of Lip) • **HENDRIX**

ESCO AND HENDRIX 7 CUBIC YARD 7 Cubic Yard Drag Bucket, equipped with hardware. In fair to good condition • **ESCO 7 Cubic Yard Drag Bucket**, equipped with hardware. In fair to good condition (New Bucket Lip)

1981 MANITOWOC Model 4600 Vicon Crawler Dragline, s/n 46544, powered by Cummins KTA-19-600 and Cummins N-855-C235 diesel engines and torque converters, equipped with 140' of bolt-together boom, Esco 7 cubic yard bucket, air controls, fairlead, Detroit diesel light plant, heat and air conditioning, and 60" pads. In good condition with good



ESCO AND HENDRIX 7 CUBIC YARD

CRAWLER TRACTORS



#1 CAT D10

condition with good undercarriage. (Rebuilt Engine; Torque; Steering Valve @ 1,489 Hours; Left Final @ 4,747 Hours)

(Unit #2) CATERPILLAR Model D10 Crawler Tractor, s/n 84W00947, powered by Cat D348 diesel engine and powershift transmission, equipped with U blade with hydraulic tilt, 4-barrel single shank ripper, s/n 82W00789, 6.5" rail height, ROPS over enclosed cab with heat and air conditioning, light package, and 32" SBG pads. In good condition with fair to good undercarriage.



#3 CAT D10

In good condition with fair to good undercarriage.

CATERPILLAR Model D9L Crawler Tractor, s/n 14Y75514 (Certified Rebuild), powered by Cat 3412 diesel engine and powershift transmission, equipped with U blade with hydraulic tilt, 4-barrel single shank ripper, s/n 64Y00422, 6.5" rail height, ROPS over enclosed cab with heat and air conditioning, and 27" SBG pads. In good condition with fair to good undercarriage. (Original S/N 14Y00481)

(Unit #1) CATERPILLAR Model D10 Crawler Tractor, s/n 84W00621, powered by Cat D348 diesel engine and powershift transmission, equipped with U blade with hydraulic tilt, 4-barrel single shank ripper with hydraulic pin puller, 6.5" rail height, ROPS over enclosed cab with heat and air conditioning, light package, and 32" SBG pads. In good



#2 CAT D10

(Unit #3) CATERPILLAR Model D10 Crawler Tractor, s/n 84W01163, powered by Cat D348 diesel engine and powershift transmission, equipped with U blade with hydraulic tilt, 4-barrel multi-shank ripper, s/n 81W00325, with (1) shank, ROPS over enclosed cab with heat and air conditioning, and 28" SBG pads.



CAT D9L

RUBBER TIRED LOADERS

CATERPILLAR Model 988B Rubber Tired Loader, s/n 50W09139, powered by Cat 3408 diesel engine and powershift transmission, equipped with general purpose loader bucket with teeth, enclosed ROPS cab with heat and air conditioning, and 35/65-33 tires. In good condition with fair to good tires.



CAT 980C

CATERPILLAR Model IT12 Integrated Tool Carrier, s/n 4NC01479, powered by Cat 3204 diesel engine and powershift transmission, equipped with 92" general purpose loader bucket, hydraulic quick disconnect, auxiliary hydraulics, enclosed ROPS cab with heat, light package, and 15.5x25 tires.

In good condition with fair tires.



CAT IT12 HOSE REEL



42" Fork Attachment (Cat IT12) • Hydraulic Hose Reel (Fits IT12 or Larger Tool Carrier)

CAT IT12 FORKS



CAT IT12

HOUGH Model 550 Rubber Tired Loader, s/n 3570550U000727, powered by International 8 cylinder diesel engine and powershift transmission, equipped with general purpose loader bucket with teeth, enclosed ROPS cab with heat and air conditioning, light package, and 26.5x25 tires. In good condition with fair to good tires.

END DUMPS



CAT 769B'S

(Unit #1) CATERPILLAR Model 769B End Dump, s/n 99F5982, powered by Cat D343 diesel engine and powershift transmission, equipped with enclosed cab, supplemental steering, and 18.00R25 tires. In good condition with good tires.

(Unit #2) CATERPILLAR Model 769B End Dump, s/n 99F5578, powered by Cat D343 diesel engine and powershift transmission, equipped with enclosed cab, supplemental steering, and 18.00R33 tires. In fair to good condition with fair to good tires.

(Unit #3) CATERPILLAR Model 769B End Dump, s/n 99F6721, powered by Cat D343 diesel engine and powershift transmission, equipped with enclosed cab, supplemental steering, and 18.00R33 tires. In fair to good condition with fair to good tires.

(Unit #4) CATERPILLAR Model 769B End Dump, s/n Unknown, powered by Cat D343 diesel engine and powershift transmission, equipped with enclosed cab, supplemental steering, and 18.00R33 tires. In fair to good condition with fair to good tires.

CATERPILLAR Model 769B End Dump, powered by Cat D343 diesel engine and powershift transmission. In fair condition with fair tires. (Parts) (Missing Body, Lift Cylinders and (2) Rear Tires)

MOTOR SCRAPERS



CAT 637C'S

CATERPILLAR Model 637C Tandem Motor Scraper, s/n Unknown, powered by Cat diesel engine and powershift transmission, equipped with fast fuel, enclosed ROPS cab with air conditioning, light package, cushion hitch, and 33.25x35 tires. In fair to good condition with fair to good tires.

CATERPILLAR Model 637C Tandem Motor Scraper, s/n Unknown, powered by Cat diesel engine and powershift transmission, equipped with fast fuel, enclosed ROPS cab with air conditioning, light package, cushion hitch, and 33.25x35 tires. In fair to good condition with fair to good tires.



TEREX TS24

(Unit #1) TEREX Model TS24 Tandem Motor Scraper, s/n 62788 (43 Lot), powered by Detroit 12V-71 front and Detroit 6-71 rear diesel engines and powershift transmission, equipped with rear push block, ROPS over enclosed cab, and 33.5x33 tires. In fair condition with fair tires.

(Unit #2) TEREX Model TS24 Tandem Motor Scraper, s/n 57612 (43 Lot), powered by Detroit 12V-71 front and Detroit 6-71 rear diesel engines and powershift transmission, equipped with rear push block, ROPS over enclosed cab, and 33.5x33 tires. In fair condition with fair tires.

(Unit #3) TEREX Model TS24 Tandem Motor Scraper, s/n 53946 (43 Lot), powered by Detroit 12V-71 front and Detroit 6-71 rear diesel engines and powershift transmission, equipped with rear push block, ROPS over enclosed cab, and 33.5x33 tires. In fair condition with fair tires.

TEREX Model S24 Motor Scraper, s/n 54824 (49 Lot), powered by Detroit 12V71 diesel engine and powershift transmission, equipped with rear push block, ROPS over enclosed cab, and 35/65-33 and 33.5x33 tires. In fair condition with fair tires.

HYDRAULIC SHOVEL



CAT 235C

CATERPILLAR Model 235CFS Hydraulic Shovel, s/n 3WG00118, powered by Cat 3306 diesel engine and hydraulic drive, equipped with hydraulic bull clam bucket, enclosed ROPS cab with heat and air conditioning, and 24" DBG pads. In good condition with good undercarriage. (2,100 Hours on Engine Rebuild)

TRI-AXLE DUMP TRUCK AND MECHANICS TRUCK

2002 INTERNATIONAL Model 9900I Tri-Axle Dump Truck, powered by Cat C15, 475HP diesel engine and Fuller 18 speed transmission, equipped with J&J 19'6" aluminum dump body, 46,000# rears, 14,060# front axle, 20,000# lift axle, 80,060# GVWR, 3-position engine brake, Hendrickson suspension, air tailgate, power tarp, vibrator, aluminum Budd wheels, CB radio, air conditioning, cruise control, AM/FM CD player, and 11R24.5 tires. In good condition with good tires.

1998 FORD Model F-450 Super Duty 4x4 Mechanics Truck, powered by Powerstroke 7.3L diesel engine and 5 speed transmission with overdrive, equipped with Lincoln 9' mechanics body, AutoCrane model 5005EH, 5,000# hydraulic service crane, Ingersoll-Rand gas powered air compressor, with hose reel, Lincoln wire feeder, Lincoln 400 amp welder, powered by Perkins diesel engine, with (2) manual outriggers, dual rear wheels, AM/FM stereo, and 225/70R19.5 tires. In fair to good condition with fair to good tires.



'98 FORD F-450 4X4

PUMPS AND GENERATOR SET

GODWIN Model CD150 Dri-Prime, 4" Centrifugal Pump, s/n 943718-34, powered by John Deere diesel engine, trailer mounted with F78x15 tires. In good condition with good tires.

GORMAN RUPP Model 14A2-TS2S/G, 4" Self Priming Centrifugal Pump, s/n 1014744, powered by Lister Petter diesel engine, trailer mounted with P235/75B15 tires. In good condition with good tires.



GENERATOR AND SUBMERSIBLE PUMPS

2001 KOHLER 20KW Portable Generator Set, s/n 0707096, powered by John Deere 4 cylinder diesel engine, equipped with Grindex 4" electric submersible pump, s/n 143936, 16HP with approx. 200' power lead, Grindex 4" electric submersible pump, s/n 188607, 5.5HP with approx. 200' power lead, (2) Square D starters, main disconnect, line power ground fault monitors, and 75R15 tires. In good condition. (Both Pumps Have Commonwealth of Pennsylvania Approval Tags)

STEAM CLEANER, STRAW BLOWER, AND STORAGE TRAILER



STEAM JENNY

2004 JENNY Model 3040C Portable Steam Cleaner, powered by Kohler 13HP electric start gas engine, equipped with 250 gallon poly water tank, mounted on 12' single axle tag-a-long trailer, with 205/75R14 tires. In good condition with good tires.

FINN Model BMS-25 Straw Blower, s/n 475, powered by

Wisconsin V-4 gas engine and Teledyne friction clutch, mounted on (2) pneumatic tires. In fair condition with fair tires.

1984 FRUEHAUF Model FBB8-FL-28-W4-96, 28' Single Axle Van Trailer, equipped with filters and discharge hose, roll-up rear door, and 11R22.5 tires. In good condition with good tires. (Year From VIN Plate)

PARTS AND MISCELLANEOUS

New Drag Teeth & Shanks • Used Drag Bucket Hardware • Miscellaneous Used Parts: Cat 769B Suspension Cylinders, Transmission • New Idler (Cat D10 or D9L) • Cat 769B Axle Housing • (2) Fuel Tanks/Pumps (2,000 Gallon and 4,000 Gallon) • Tow Behind 2,000 Gallon Water Tank • (2) Lime Boxes • Steel Plates