

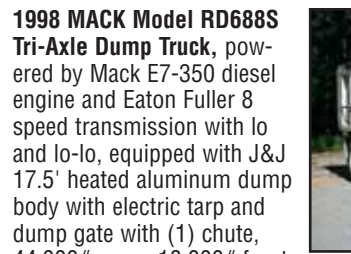
FUEL/LUBE AND DUMP TRUCKS



'05 INT'L 4400
dispenser, Veeder Root meter register with ticket printer, (1) storage compartment, Atlas Copco hydraulic air compressor, work lights, air conditioning, cruise control, and 11R22.5 tires. In good to very good condition with good tires.



'99 WESTERN STAR 4864F TRI-AXLE
mirrors, air conditioning, cruise control, and 315/80R22.5 front, 295/75R22.5 lit axle and 11R22.5 rear tires. In good condition with fair to good tires.



'98 MACK RD688S
44,000# rears, 18,000# front and 20,540# airlift axles, 2-stage engine brake, Hendrickson airlift 3rd axle, camelback suspension, heated mirrors, air conditioning, 11R22.5 front, 11R24.5 rear, and 315/80R22.5 3rd axle tires. In good condition with good tires. *(Purchased New)*



'99 VOLVO-AUTOCAR ACL64F
conditioning, 315/80R22.5 front and 11R24.5 rear tires. In good condition with fair to good tires.

1989 INTERNATIONAL Model 1754 Single Axle Dump Truck, powered by Navistar B180DF, 180HP diesel engine and Spicer 5 speed transmission with 2 speed rear, equipped with 10' steel dump body, dump gate, manual tarp, double frame, spring suspension, tow hitch, 11.00R22.5 front and 11.00R20 rears. In good condition with good tires.

TRUCK TRACTOR AND LOWBOY TRAILER, AND TAG-A-LONG AND TILT TOP TRAILERS



'92 PETERBILT 379 WITH '88 EAGER BEAVER 35 TON
1992 PETERBILT Model 379 Tandem Axle Truck Tractor, powered by Cat 3406B 425HP diesel engine and Eaton Fuller 15 speed transmission, equipped with 40,000# wheels, 12,000# front axle, 2-stage engine brake, wetline kit, air slide 5th wheel, aluminum disc wheels, stainless steel fenders, visor, stacks, and bumper, 201" wheelbase, and 11R24.5 tires. In good condition with good tires.

1988 EAGER BEAVER Model 35GHG/BR, 35 Ton Tandem Axle Lowboy Trailer, equipped with ground-bearing detachable gooseneck, 19'8" x 8' level deck, 5'6" over wheels, 2' beavertail, 3rd axle ready, pony motor, spring suspension, 81,120 GVWR, chain dogs, outriggers, and 255/70R22.5 tires. In good to very good condition with fair to good tires.

1989 EAGER BEAVER 20 Ton Tandem Axle Tag-A-Long Trailer, equipped with 17' level deck, 5' beavertail with 5' ramps, and 215/75R17.5 tires. In good condition with good tires.

1974 MILLER Model QTG, 22 Ton Tandem Axle Tilt Top Trailer, VIN# 17507, equipped with 22' deck (4/18' tilt) and chain dogs. In good condition.



'99 FORD F-450XL SUPER DUTY

1992 FORD Model F-250XL Extended Cab Service Truck, powered by International 7.3L diesel engine and automatic transmission, equipped with 9' open utility body, dual fuel tanks, tow hitch, dual wheels, air conditioning, and 265/75R16 tires. In good condition with good tires.

2000 FORD Model F-150, 4x4 Crew Cab Pickup Truck, powered by Triton V-8 gas engine and automatic transmission, equipped with 7' bed with cross tool box, air conditioning, and 255/70R16 tires. In good condition with good tires.

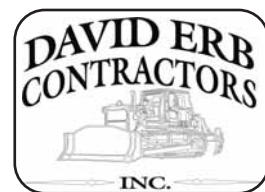
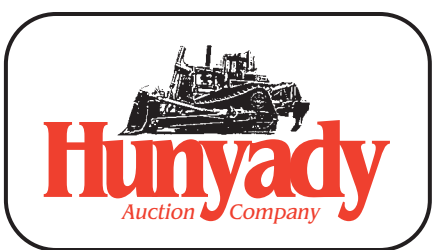
1994 FORD Model F-150XLT, 4x4 Extended Cab Pickup Truck, powered by V-8, 5.0L gas engine and automatic transmission, equipped with 7' bed with cross tool box, power windows and locks, air conditioning, cruise control, and 31x10.5R15 tires. In fair condition with good tires.

SWEEPER, ROLL-BACK TRUCK, AND TOW-BEHIND BROOM
1995 FORD Sweeper Truck, powered by 6 cylinder diesel engine and automatic transmission, equipped with Tymco Regenerative Air Systems sweepers, Tymco forward high dump, (2) gutter brooms, water system, 32,000# GVWR, 153" wheelbase, and 11R22.5 tires. In good condition with good tires.

1976 GMC Model Sierra Single Axle Roll-Back Truck, powered by V-8 gas engine and 5 speed transmission with 2 speed rear, equipped with 20' steel roll-back body, light bar, 9.00R20 front and 10.00R20 rear tires. In fair to good condition with good tires.
7' Tow Behind Broom Attachment, chain driven from rear axle, with 6.00x16 tires.



'95 FORD TYMCO



1440 Cowpath Rd. • Hatfield, PA 19440 • 800-233-6898 • Fax: 215-361-9212

NOTICE: Mr. Brian Plushanski, owner of Brian Plushanski Construction Co., Inc. has decided to liquidate equipment that is surplus to their present needs. A few quality packages have also been accepted from area contractors including David Erb Contractors, Inc. and Victor Daku & Sons Excavating. Everything in the auction must sell to the highest bidder regardless of price!

LOCATION: The auction will be held at 78 Route 173 West, Hampton, NJ 08827
TERMS: Payment in full is required on sale day by cash, certified funds, or check with a bank letter of guarantee. Sample letter of guarantee: "We hereby guarantee the payment of our customer _____ written on his account up to \$ _____ dollars for purchases at your auction sale on October 1, 2009." All guaranteed checks should be made payable to Hunyady Auction Co. **Never A Buyer's Premium!**

FINANCING: Financing is available; please contact Susan at Hunyady Auction Company for complete details.

SALES TAX: Since this contractor is selling items not normally sold in the course of his business, the State of New Jersey considers this an isolated sale and does not require the auction company to collect sales tax.

INSPECTION: Items will be available for inspection beginning one week prior to the auction from 8:00 a.m. until 5:00 p.m., with the exception of Saturday and Sunday, September 26 and 27, at which time the site will be closed. Items may also be inspected sale day morning from 7:00 a.m. until 9:00 a.m.

REMOVAL: After complete payment, all sale items may be removed on sale day as long as the removal activity is not disruptive to the sale and only until 5:00 p.m. Items may also be removed Friday, October 2, and Monday, October 5 thru Thursday, October 8, 2009 from 8:00 a.m. until 5:00 p.m. All items must be removed no later than Thursday, October 8, 2009 at 5:00 p.m.

SALE SITE DIRECTIONS: FROM INTERSTATE 78 EASTBOUND: Exit #12 (Jutland/Norton) Proceed to stop sign and turn left onto Frontage Road. Continue to 1st traffic light and turn left onto Perryville road (Route 635). Proceed to 1st traffic light and make a left onto Route 173. Continue (0.2) miles to sale site on right. FROM INTERSTATE 78 WESTBOUND: Exit #12 (Jutland/Norton) Proceed to stop sign and turn left onto Route 173. Continue thru 1st traffic and proceed (0.2) miles to sale site on right.

AIRPORT INFORMATION: The area is serviced commercially through Newark Liberty International Airport and Lehigh Valley International Airport, as well as privately through Morristown Municipal Airport. Rental cars are available at all locations.

MOTEL INFORMATION: OFF OF EXIT 15 OF INTERSTATE 78: Eastbound - Hampton Inn Clinton, 16 Frontage Drive, Clinton, NJ - (908) 713-4800 • Westbound - Holiday Inn Select, 111 W. Main Street, Clinton, NJ - (908) 735-5111

POWER BUGGIES, TRENCH BOXES, AND MANHOLE BOX



(1) OF (2) MAGNUM POWER BUGGIES
MAGNUM Model MPB16A Power Buggy, s/n Unknown, powered by Honda GX390 gas engine and hydrostatic transmission, equipped with hydraulic dump box and 16.5/65x8 front and 5.70x8 rear tires. In good condition with good tires.

(2) 8'x20' Trench Boxes
MAGNUM Model MPB16A Power Buggy, s/n 058100, powered by Honda GX390 gas engine and hydrostatic transmission, equipped with hydraulic dump box and 16.5/65x8 front and 5.70x8 rear tires. In good condition with good tires.

(2) 8'x8' Manhole Box

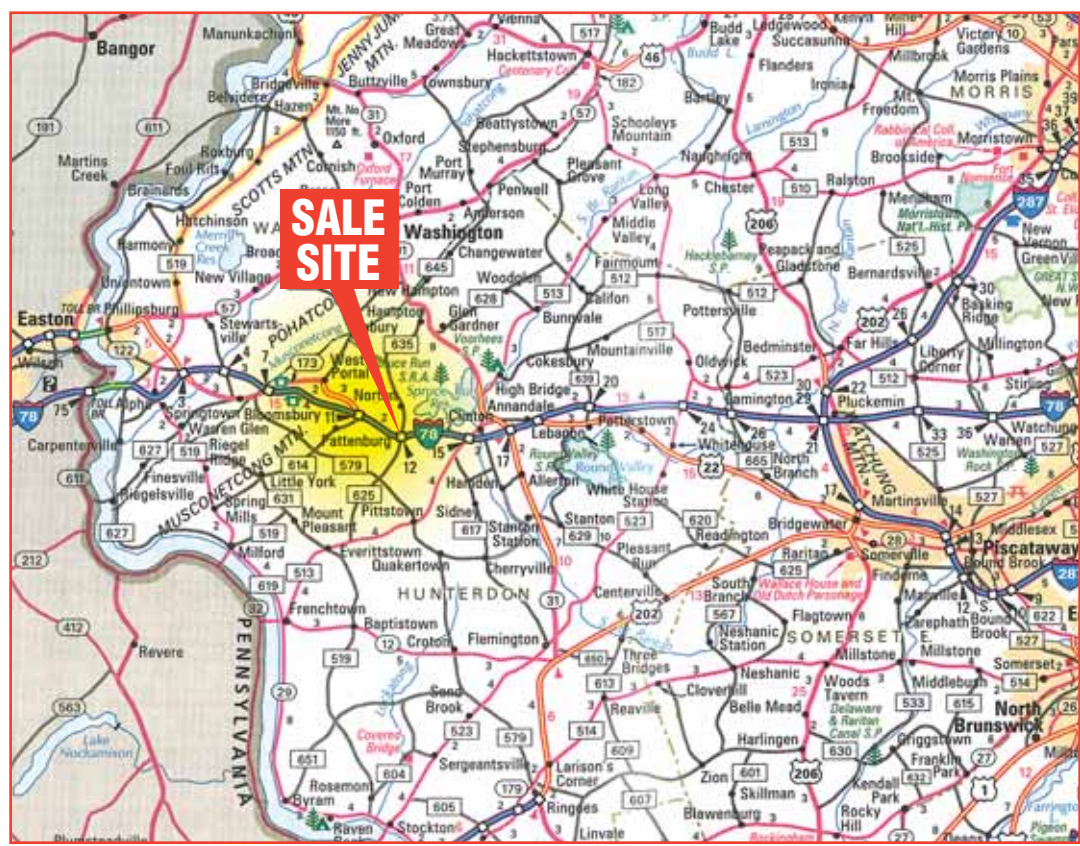
MISCELLANEOUS

LIFTMOORE 30RFE, 3,200# Boom • GLENMAC Harley Pro 6, 3-Point Hitch Power Rake • 6'x9' Pintle-Style Army Trailer

• PROTECT-O-FLASH Arrowboard, Petter diesel • REINCO TM730 Gas Powered Straw Mulcher • STOW CS1035W 24" Gas Powered Concrete Saw • HANDY CUT Asphalt Cutter • STOW VRC-60HD Jumping Jack Tamper

• (15) Assorted Pallet Racking Sections • (3 Pieces) 4'x8'x1" Road Plate

• SKILSAW, with case • Pneumatic Heavy Duty Metal Shear (Unused) • 4-Part Lifting Chain, with hooks • (2) Weed Wackers • (2) Leaf Blowers



SALE SITE PHONE: (908) 735-9055
SALE SITE FAX: (908) 735-8061

ABSOLUTE AUCTION
SURPLUS EQUIPMENT
THURSDAY, OCTOBER 1, 2009 - 9:00 AM



BRIAN PLUSHANSKI CONSTRUCTION CO. & OTHERS
Hampton, New Jersey (Easton, PA Area)



'93 CAT D6HXL SERIES II



'96 CAT 426C 4X4 EXTEND-A-HOE



'05 INT'L 4400



1440 COWPATH RD. • HATFIELD, PA 19440
215/361-9099 • Fax: 215/361-9212



PRE-SORTED
FIRST CLASS MAIL
US POSTAGE
PAID
HAVERTOWN, PA
PERMIT #45

HYDRAULIC EXCAVATORS



'06 CAT 324DL

2006 CATERPILLAR Model 324DL Hydraulic Excavator, s/n CAT0324DCLAB00337, powered by Cat C7DI (C7 Acert) 300HP diesel engine and hydraulic drive, equipped with 9'8" dipper stick, Cat 30" digging bucket with side cutters, partial rock guards, air conditioning, 15'2" crawlers, and 32" TBG pads. In very good condition with good to very good undercarriage. (01,174 Original Hours) *(Purchased New)*

2001 CATERPILLAR Model 320CL Hydraulic Excavator, s/n ANB00475, powered by Cat 3066 diesel engine and hydraulic drive, equipped with 9'6" dipper stick, Cat 40" digging bucket with side cutters, partial rock guards, thumb bracket, light package, air conditioning, 14'7" crawlers, and 32" TBG pads. In good condition with good undercarriage. *(Purchased New)*



'01 CAT 320CL

2001 CATERPILLAR Model 320CL Hydraulic Excavator, s/n ANB00700, powered by Cat 3066 diesel engine and hydraulic drive, equipped with 9'6" dipper stick, Cat 40" digging bucket with side cutters, partial rock guards, thumb bracket, light package, air conditioning, 14'7" crawlers, and 32" TBG pads. In good condition with good undercarriage. *(Purchased New)*



'01 CAT 320CL

2000 CATERPILLAR Model 318BL Hydraulic Excavator, s/n 3LR00363, powered by Cat 3046 diesel engine and hydraulic drive, equipped with 8'6" dipper stick, Cat 36" digging bucket with side cutters, partial rock guards, air conditioning, 13'5" crawlers, and 32" TBG pads. In good to very good condition with good undercarriage.



'00 CAT 318BL

2005 HITACHI Model Zaxis 160LC Hydraulic Excavator, s/n FF01F1Q006102, powered by Isuzu AA-4BG1T, 4 cylinder diesel engine and hydraulic drive, equipped with 8'6" dipper stick, CF 48" digging bucket with side cutters, JRB quick coupler, CF 24" digging bucket with side cutters, heat and air conditioning, 12'9" crawlers, and 24" TBG pads. In good condition with good undercarriage. *(Purchased New)*

'05 HITACHI ZAXIS 160LC

1999 KOMATSU Model PC300LC-6 LE Hydraulic Excavator, s/n A83091, powered by Komatsu 6 cylinder diesel engine and hydraulic drive, equipped with 10'6" dipper stick, 50" digging bucket with side cutters, JRB hydraulic quick coupler, thumb bracket, light package, air conditioning, 16'4" crawlers, and 34" TBG pads. In good condition with good undercarriage.



'99 KOMATSU PC200LC

1994 CATERPILLAR Model 307 Mini Hydraulic Excavator, s/n 9ZL01147, powered by Mitsubishi 4 cylinder diesel engine and hydraulic drive, equipped with 5'8" dipper stick, 28" digging bucket, 9" crawlers, and 18" DBG pads. In good condition with good undercarriage.

Digging Buckets: CAT 48" w/side cutters (Cat 324DL) • 24" w/side cutters (Cat 320) (PLUSHANSKI)

CRAWLER TRACTORS



'93 CAT D6HXL

1993 CATERPILLAR Model D6HXL Series II Crawler Tractor, s/n 9KJ00499, powered by Cat 3306 diesel engine and powershift transmission, equipped with semi-U blade with tilt, ROPS over enclosed cab with air conditioning, drawbar, and 24" SBG pads. In good condition with very good undercarriage.

2004 CATERPILLAR Model D5GXL Crawler Tractor, s/n CAT00D5GJWGB01430, powered by Cat 3046 diesel engine and hydrostatic transmission, equipped with 6-way straight blade, draw hitch, and 20" SBG pads. In good condition with good undercarriage. *(Purchased New)*



'05 CAT D4GXL

2005 CATERPILLAR Model D4GXL Crawler Tractor, s/n CAT00D4GCHYD01210, powered by Cat 3046 diesel engine and powershift transmission, equipped with 6-way straight blade, enclosed ROPS cab with air conditioning, and 18" SBG pads. In very good condition with good to very good undercarriage. (730 Original Hours) *(Purchased New)*

1996 CATERPILLAR Model D4H LGP Series II Crawler Tractor, s/n 9GJ01788, powered by Cat 3304 diesel engine and powershift transmission, equipped with 6-way straight blade, ROPS canopy, drawbar, and 30" SBG pads. In good condition with good undercarriage.



'94 CAT D4C SERIES III

1997 KOMATSU Model D41P-6 Crawler Tractor, s/n B20506, powered by Komatsu diesel engine and powershift transmission, equipped with 6-way straight blade, ROPS canopy, and 28" SBG pads. In good condition with good undercarriage.



(2) '98 KOMATSU D38P

1998 KOMATSU Model D38P-1 Crawler Tractor, s/n 474002P085762, powered by Komatsu 4 cylinder diesel engine and powershift transmission, equipped with 6-way straight blade, ROPS canopy, and 24" SBG pads. In good condition with fair to good undercarriage. *(Purchased New)*

DRESSER Model TD15C Crawler Tractor, s/n 4375 (owner supplied), powered by 6 cylinder diesel engine and powershift transmission, equipped with semi-U blade with tilt and 20" SBG pads. In fair condition with fair undercarriage.

CRAWLER AND RUBBER TIED LOADERS



'98 CAT 953C

1992 CATERPILLAR Model 936E Rubber Tired Loader, s/n 45206593, powered by Cat 3304 diesel engine and powershift transmission, equipped with general purpose loader bucket, enclosed ROPS cab, and 20.5x25 tires. In good condition with good tires.



'96 VOLVO L90C

1986 FIAT ALLIS Model FR11 Rubber Tired Loader, s/n R11B2T-530141, powered by Fiat 8065S/25 diesel engine and powershift transmission, equipped with general purpose loader bucket, enclosed ROPS cab, and 17.5x25 tires. In fair to good condition with fair to good tires. 48" Fork Attachment (Cat IT28) • Fork Attachment (Fiat Allis FR11) • Root Rake (Fiat Allis FR11)



(2) '99 BELL B40 C 40 TON

1999 BELL Model B40C, 40 Ton, 6x6 Articulated End Dump, s/n BAT4489/99, powered by model ADE442T diesel engine and Allison push button automatic transmission, equipped with 36,500# payload, heat and air conditioning, and 29.5R25 tires. In good condition with good tires.

1989 MOXY Model 7235B, 35 Ton, 6x6 Articulated End Dump, s/n 72068, powered by Scania 8 cylinder diesel engine and powershift transmission, equipped with heatable and lined body, lock-up torque converter, and 26.5R25 tires. In good condition with good tires.

1989 MOXY Model 7235B, 35 Ton, 6x6 Articulated End Dump, s/n 72029, powered by Scania 8 cylinder diesel engine and powershift transmission, equipped with lined body, lock-up torque converter, air conditioning, and 26.5R25 tires. In good condition with good tires.



(1) OF (2) 6227B MOXY 27 TON

1988 MOXY Model 6227B, 27 Ton, 6x6 Articulated End Dump, s/n 65408, powered by Scania 6 cylinder diesel engine and powershift transmission, equipped with lined body, lock-up torque converter, exhaust retarder, and 23.5R25 tires. In good condition with (4) good and (2) fair to poor tires.

1988 CATERPILLAR Model D25C, 25 Ton, 4x4 Articulated End Dump, s/n 9YC00778, powered by Cat diesel engine and powershift transmission, equipped with lined body and 26.5R25 tires. In good condition with good tires.

1992 CATERPILLAR Model D20D, 20 Ton, 4x4 Articulated End Dump, s/n 9MG00056, powered by Cat 3116 diesel engine and powershift transmission, equipped with ribbed body, passenger seat, and 23.5R25 tires. In good condition with good tires.

COMPACTION EQUIPMENT



'04 HAMM 3412

2004 HAMM Model 3412 Vibratory Compactor, s/n 60918, powered by Deutz 131HP diesel engine and hydrostatic transmission, equipped with 84" smooth drum, drum cleaner, ROPS canopy and 23.1x26 tires. In good condition with good tires. *(Purchased New)*

1997 CATERPILLAR Model CS563C AW Vibratory Compactor, s/n 4KN00765, powered by Cat 3116 diesel engine and hydrostatic transmission, equipped with 84" smooth drum, drum drive, ROPS canopy and 18x26 tires. In good condition with good tires. *(Purchased New)*



1994 INGERSOLL RAND Model SD-100 ProPac Series Vibratory Compactor, s/n 140731, powered by Cummins 125HP 3.9L diesel engine and hydrostatic transmission, equipped with 84" smooth drum, drum drive, dual vibration frequency selector, ROPS canopy, and 23.1x26 tires.

'94 INGERSOLL RAND SD-100

1986 CATERPILLAR Model CS433 Vibratory Compactor, s/n 6ND00152, powered by John Deere 4 cylinder diesel engine and hydrostatic transmission, equipped with 60" smooth drum, drum drive, ROPS canopy, and 14.9x24 tires. In good condition with good tires. *(Purchased New)*



1999 INGERSOLL RAND Model DD24 Vibratory Roller, s/n 160616, powered by Deutz 3 cylinder diesel engine and hydrostatic transmission, equipped with 46" smooth drums, water system, and ROPS canopy. In good to very good condition.

'99 INGERSOLL RAND DD24

1996 CATERPILLAR Model CB-214C Vibratory Roller, s/n 9XK00445, powered by Hatz diesel engine and hydrostatic transmission, equipped with 39" smooth drums, 2-speed vibrator, water system, and ROPS canopy.

CRAWLER AND RUBBER TIED ASPHALT PAVERS



'99 LEEBOY L700ST

BARBER GREENE Model SA145 Crawler Asphalt Paver, s/n SA145X194, powered by John Deere 4 cylinder diesel engine and hydraulic drive, equipped with Hy Widener model G145, 10'-16" screed, s/n 206, Topcon grade control system, dual riding consoles, and 14" crawlers. In fair to good condition with fair to good undercarriage.



BARBER GREENE SB-131A

BARBER GREENE Model SB-131 Rubber Tied Asphalt Paver, s/n SB131X240, powered by John Deere 4276TF, 4 cylinder diesel engine and powershift transmission, equipped with 10'-16" heated hydraulic screed, 7 ton 10'x6" hopper, and 16.00-24DT tires. In good condition with good tires.

TRACTOR LOADER BACKHOES



'96 CAT 426C 4X4 EXTEND-A-HOE

2002 CATERPILLAR Model 420D, 4x4 Tractor Loader Extend-A-Hoe, s/n CAT0420DCDFP09074, powered by Cat 3054 diesel engine and shuttle transmission, equipped with general purpose loader bucket, 28" digging bucket, enclosed cab with air conditioning, joystick controls, stabilizers, 340/80R18 front and 19.5Lx24 rear tires. In good to very good condition with good tires.



'97 CAT 416C 4X4

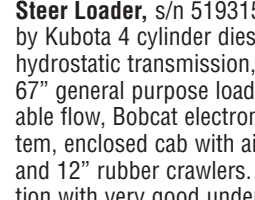
1988 CATERPILLAR Model 416 Tractor Loader Backhoe, s/n 5PC06233, powered by diesel engine, and shuttle transmission, equipped with general purpose loader bucket, 24" digging bucket, enclosed cab, 11Lx16 front and 19.5Lx24 rear tires. In good condition with good tires. *(Purchased New)*

1985 FORD Model 555A Tractor Loader Extend-A-Hoe, s/n C744560, powered by New Holland 333E diesel engine and shuttle transmission, equipped with general purpose loader bucket, 17" digging bucket, canopy, 10.5/80x18 front and 16.9R28 rear tires. In good condition with good tires.



'05 CAT 262B

2003 BOBCAT Model T190 Crawler Skid Steer Loader, s/n 519315528, powered by Kubota 4 cylinder diesel engine and hydrostatic transmission, equipped with 67" general purpose loader bucket, variable flow, Bobcat electronic security system, enclosed cab with air conditioning, and 12" rubber crawlers. In good condition with very good undercarriage. *(Purchased New)*



'03 BOBCAT T190

2000 JOHN DEERE Model 240 Skid Steer Loader, s/n KV0240A242934, powered by John Deere 2.9L diesel engine and hydrostatic transmission, equipped with 65" general purpose loader bucket, hydraulic beyond, ROPS canopy with side screens, and 10x16.5 tires. In good condition with poor tires.

'00 JOHN DEERE 240 (FILE PHOTO)

TRACK DUMPER



'95 YANMAR C60R (FILE PHOTO)

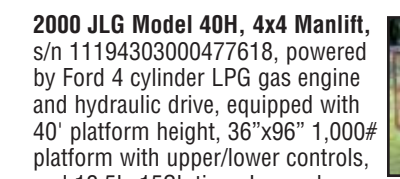
1995 YANMAR Model C60R Track Dumper, s/n 10625C, powered by Yanmar 4 cylinder diesel engine and hydrostatic transmission, equipped with 9'x7" hydraulic dump with fold-down sides and hydraulic latch end gate, ROPS canopy with rear screen, and 12'2"x24" rubber tracks. In good condition with fair to good undercarriage.

MANLIFTS, ROUGH TERRAIN FORKLIFTS & CARRY DECK CRANE



'97 GROVE 60' 4X4 (FILE PHOTO)

1997 GROVE Model MZ66B, 4x4 Manlift, s/n 43019, powered by 3 cylinder diesel engine and hydraulic drive, equipped with 60' platform height, 500# capacity platform with upper/lower controls and 15x19.5 tires. In good condition with good tires.



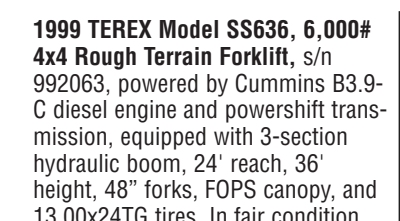
'00 JLG 40' 4X4

2002 GRADALL Model 53409-45, 9,000# 4x4 Rough Terrain Telescopic Forklift, s/n 0744186, powered by Cummins 4 cylinder diesel engine and powershift transmission, equipped with 3-section hydraulic scissor boom, 32' reach, 45' height, 48" forks, hydraulic mast tilt and swivel with cab tilt, enclosed cab, and 13.00x24TG foam filled tires. In good condition with good to very good tires.



'02 GRADALL 9,000#, 4X4

1999 TEREX Model SS636, 6,000# 4x4 Rough Terrain Forklift, s/n 992063, powered by Cummins B3.9-C diesel engine and powershift transmission, equipped with 3-section hydraulic boom, 24' reach, 36' height, 48" forks, FOPS canopy, and 13.00x24TG tires. In fair condition with poor to fair tires.



'99 TEREX 6,000#, 4X4



1995 PETTIBONE Model B66C, 6,000# 4x4 Rough Terrain Forklift, s/n 5-916, powered by Cummins diesel engine and powershift transmission, equipped with 3-section 16'-33" hydraulic telescopic boom, 48" forks, house tilt, open cab, disc brakes, and 13.00x24 tires. In good condition with fair to good tires.



'88 BRODERSON 8.5 TON

1988 BRODERSON Model IC80-1D, 8.5 Ton Carry Deck Crane, s/n 128948, powered by Continental 4 cylinder gas/LPG engine and 3 speed shuttle transmission, equipped with 3-section hydraulic boom with 10' fold-away boom pin-in extension, (4) hydraulic outriggers, enclosed cab, and 10.00R15 tires. In good condition with good tires.