

# ABSOLUTE AUCTION

## COMPLETE LIQUIDATION

**Dagostino Company, Inc.**

**Wednesday,**

**December 15, 2010**

**9:00 AM**



'99 HITACHI EX330 AND EX160

**Hatfield, Pennsylvania**  
**(30 Miles North of Philadelphia)**



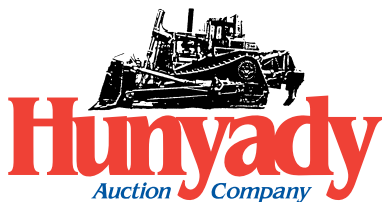
(2) OF (3) CASE BACKHOES



'97 MACK AND '06 EAGER BEAVER 20 TON



(1) OF (2) SKID STEER LOADERS



1440 COWPATH RD. • HATFIELD, PA 19440  
215/361-9099 • Fax: 215/361-9212

PRE-SORTED  
FIRST CLASS MAIL  
US POSTAGE  
**PAID**  
HAVERTOWN, PA  
PERMIT #45





## HYDRAULIC EXCAVATORS AND ATTACHMENTS



'99 HITACHI EX330 LC

**1999 HITACHI Model EX160 LC-5 Hydraulic Excavator**, s/n 13KP001986, powered by Isuzu diesel engine and hydraulic drive, equipped with 8'6" dipper stick, hydraulic beyond, CF 24" digging bucket, air conditioning, vandalism kit, 12'8" crawlers, and 23.5" TGB pads. In good condition with good undercarriage.



'89 CAT 225B LC

**Excavator Attachments: ALLIED Hy-Ram 755 Hydraulic Demolition Hammer**, 2,600 ft. lb. impact energy, 33,000#-60,000# machine class (Cat 225 or EX160) • **ALLIED 2300 Hydraulic Plate Compactor** (Cat 225 or CX160) • **HITACHI EX330 Digging Buckets: 54"; 24"; 24"** (Fits Hitachi 230) • **HITACHI EX160 Digging Buckets: 42"** • **CAT 225 Digging Buckets: 42"; 24"** • **Various Bucket Side Cutter Bits**

**1999 HITACHI Model EX330 LC-5 Hydraulic Excavator**, s/n 1H1P020839, powered by Isuzu diesel engine and hydraulic drive, equipped with 10'6" dipper stick, CF 30" digging bucket, air conditioning, vandalism kit, 16'4" crawlers, and 31.5" TGB pads. In good condition with good undercarriage.



'99 HITACHI EX160 LC

**1989 CATERPILLAR Model 225B LC Hydraulic Excavator**, s/n 2ZD01690, powered by Cat 3208 diesel engine and hydraulic drive, equipped with 10' dipper stick, hydraulic beyond, 30" digging bucket, 14'6" crawlers, and 30" TGB pads. In good condition with fair to good undercarriage.



DEMO HAMMERS AND PLATE COMPACTOR

## TRACTOR LOADER EXTEND-A-HOES AND ATTACHMENTS



'02 CASE 580 SUPER M 4X4 EXTEND-A-HOE

**1999 CASE Model 590 Super L Series II, 4x4 Tractor Loader Extend-A-Hoe**, s/n JJG0211911, powered by Case diesel engine and shuttle transmission, equipped with general purpose loader bucket, 24" digging bucket, hydraulic beyond, 4-lever backhoe controls, enclosed ROPS cab, 14x17.5 NHS front and 21Lx24 rear tires. In good condition with fair to good tires.



'99 CASE 590 SUPER L 4X4 EXTEND-A-HOE



'97 CASE 580L EXTEND-A-HOE

(Case 590) • **Bolt-On Thumb Attachment** • **12" Asphalt Cutter** • **Backhoe Digging Buckets: CAT: 24"; 12" • CASE: 36"; 24"; 12"**

**1997 CASE Model 580L Tractor Loader Extend-A-Hoe**, s/n JJG0234154, powered by Case diesel engine and shuttle transmission, equipped with general purpose loader bucket, 24" digging bucket, 4-lever backhoe controls, enclosed ROPS cab, 11Lx16SL front and 19.5Lx24 rear tires. In good condition with fair to good front and poor rear tires.

**Backhoe Attachments: ALLIED Hy-Ram 730 Hydraulic Demolition Hammer** (Case 590) • **ALLIED 8700C Plate Compactor**

## CRAWLER TRACTOR AND MISCELLANEOUS EQUIPMENT ATTACHMENTS



'96 JOHN DEERE 450G LT

**Miscellaneous Equipment Attachments: (2 Sets) ACS 72" Forks** (Loader) • **60" Forks** (Bar Mount) • **(2 Sets) 48" Forks** (Bolt-On)



ACS 72" FORK ATTACHMENTS

**1996 JOHN DEERE Model 450G LT Series IV Crawler Tractor**, s/n T0450GH820180, powered by John Deere diesel engine and powershift transmission, equipped with 6-way blade, ROPS canopy, and 15.5" SBG pads. In good condition with fair to good undercarriage.

## SKID STEER LOADERS AND ATTACHMENTS



'02 CASE 70XT

Case diesel engine and hydrostatic transmission, equipped with hi-flow hydraulics, 72" general purpose bucket (fair), ROPS canopy, and 12x16.5NHS tires. In good condition with good to very good tires. (02,639 Hours)

**Skid Steer Attachments: ALLIED 715 Hydraulic Demolition Hammer** • **GEHL 16" Cold Planer** • **PREPARATOR 72" Soil Conditioner** • **(2) FFC 72" Broom Attachments** • **(2) GUEST 41"-72" Utility Trench Paver**



'99 CASE 1845C HI-FLOW

**2002 CASE Model 70XT Skid Steer Loader**, s/n JAF0351149, powered by Case diesel engine and hydrostatic transmission, equipped with 72" general purpose bucket with bolt-on cutting edge, auxiliary hydraulics and electric, ROPS canopy, and 12x16.5 NHS tires. In good condition with fair to good tires. (1,149 Hours)

**1999 CASE Model 1845C Skid Steer Loader**, s/n JAF0276351, powered by

## MOBILE BROOM, CRAWLER PAVER, AND COMPACTION EQUIPMENT



'06 LAYMOR 8HC

**1996 MAULDEN Model 550E Crawler Paver**, s/n 55-9604-112, powered by Kohler 23HP twin cylinder gas engine and hydraulic drive, equipped with 8'-13" heated vibratory screed with crown adjustment, tilt hopper feed, and diesel spray down. In fair to good condition with good undercarriage.



'96 CAT CB224C

**2006 LAYMOR Model 8HC Mobile Broom**, s/n 31191, powered by Kubota diesel engine and hydrostatic transmission, equipped with 7'6" hydraulic broom with power angle, water system with broom spray, ROPS canopy, tow package, and P205/75R14 tires. In good to very good condition with good tires. (0,447 Hours)

**1996 CATERPILLAR Model CB224C Tandem Vibratory Roller**, s/n 3AL00592, powered by Hatz diesel engine and hydrostatic transmission, equipped with 47" smooth drum and spray system with front and rear spray. In good condition. (02,744 Hours)

**2001 RAMMAX Model P-33/24 HMT Trench Compactor**, s/n 332528, powered by Hatz diesel engine, equipped with 33" padfoot drums and wireless remote. In good condition.

'01 AND '00 RAMMAX TRENCH COMPACTORS

**2000 RAMMAX Model P-33/24 HMR Trench Compactor**, s/n 330739, powered by Hatz diesel engine, equipped with 24" padfoot drums and wireless remote. In good condition. **Spare 24" and 33" Padfoot Wheels**



**DUMP, UTILITY, FLATBED, AND PICKUP TRUCKS**



**'97 MACK RD688S**

**1998 GMC Model C6500 Single Axle Dump Truck**, powered by Cat 3126, 330HP diesel engine and Thiele 10' steel dump body with manual tarp and (3) chutes, tow package with electric, electric/hydraulic brakes, 25,950# GVWR, air conditioning, heated mirrors, and 11R22.5 tires. In good condition with good tires.

**2003 GMC Model 2500HD Utility Truck**, powered by Vortec 6.0L gas engine and automatic transmission, equipped with Reading 8' open utility body, tow package with electric, air conditioning, and LT245/75R16 tires. In good condition with good tires.



**'98 GMC C6500**



**'03 GMC 2500 AND '98 GMC 3500**

**1998 GMC Model 3500SLE Flatbed Truck**, powered by Vortec 5.7L gas engine and automatic transmission, equipped with 8'6" flatbed with Reading side boxes, stake pockets, material rack, tow package with electric, air conditioning, power windows, locks and mirrors, and LT245/75R16 tires. In good condition with good tires.

**1999 GMC Model 2500 SLT, 4x4 Extended Cab Pickup Truck**, powered by Vortec 6.0L gas engine and automatic transmission, equipped with 6'6" bed with liner, tow package with electric, air conditioning, full power package, and LT245/75R16 tires. In good condition with good tires.



**'99 GMC AND '99 FORD 4X4 PICKUPS**

**1999 FORD Model F-250 XLT, 4x4 Pickup Truck**, powered by Triton V-8 gas engine and automatic transmission, equipped with 8' bed with liner, tow package with electric, air conditioning, power windows, locks and mirrors, cruise control, and LT265/75R16 tires. In good condition with good tires.

**2000 GMC Model 2500 SL Pickup Truck**, powered by Vortec 6.7L gas engine and automatic transmission, equipped with 8' bed with liner, tow package with electric, air conditioning, and LT245/75R16 tires. In good condition with good tires.

**TAG-A-LONG TRAILERS**



**'06 EAGER BEAVER 20 TON**

**Trailer**, equipped with 12'x6'6" level deck, 3' beavertail, ramps, electric brakes, 12,800# GVWR, and 9-14.5 tires. In fair to good condition with good tires.

**1985 INTERSTATE Model 18BST, 9 Ton Tri-Axle Tag-A-Long Trailer**, equipped with 16'6"x8' level deck, 3'6" beavertail, ramps, 22,975# GVWR, and 9.50-16.5 tires. In fair condition with good tires.

**2003 PREMIER Tandem Axle Landscape Trailer**, equipped with 7,000# GVWR

**2006 EAGER BEAVER Model 20XPT, 20 Ton Tandem Axle Tag-A-Long Trailer**, equipped with 21'x8'6" level deck with 6' beavertail and ramps, all-wheel ABS braking, Roto-Ring tie downs, air brakes, 48,380# GVWR, and 215/75R17.5 tires. In good condition with good tires.

**1998 EAGER BEAVER Model AP10, 5 Ton Tandem Axle Tag-A-Long**

**AIR COMPRESSORS, CONCRETE SAW, STRAW BLOWER, AND ARROWBOARDS**



**'01 AND '95 IR COMPRESSORS**

**TARGET Model Pro651I Concrete Saw**, powered by Wisconsin 65HP gas engine and hydrostatic transmission, equipped with 48" blade capacity.

**Skid Mounted Straw Blower**, s/n 55598418, powered by Honda 20HP motor with electric start, equipped with rotating chute and feed table

**2001 SOLAR TECH Model AB-0715-D Solar Powered Portable Arrowboard**. In very good condition.

**PROTECT-O-FLASH Solar Powered Portable Arrowboard**. In good condition.

**2001 INGERSOLL RAND Model P-185-JD, 185CFM Portable Air Compressor**, s/n 317694UKK221, powered by John Deere diesel engine. In good to very good condition.

**1995 INGERSOLL RAND Model P175WJD, 175CFM Portable Air Compressor**, s/n 251434UKF282, powered by John Deere diesel engine. In good condition.



**TAILGATE STRAW BLOWER**

**PUMPS, GENERATORS, AND FUEL TANKS**



**GORMAN RUPP 6X6 DRI-PRIME**

**GORMAN RUPP Model Prime Aire 6x6 Portable Dri-Prime Pump**, powered by John Deere Powertech 4.5L diesel engine, equipped with PA Series 6x6 model PA6A60-4045D centrifugal pump, s/n 1110032. In good condition. (Tach Meter Reads 4,446 Hours) (Hobbs Meter Reads 4,918 Hours)

**HONDA WT40X, 4" Trash Pump** • (3) **HONDA WT30X, 3" Trash Pumps** • (2) **HONDA WT20X, 2" Trash Pumps** • **GOULD 2" Submersible Raw Sewage Pump** • (4) **TSURUMI 2" Electric Submersible Pumps** • (2) 1" Submersible Pumps • 2"-6" Suction & Discharge Hose • **POWERPRO 3500 Watt Generator** • **UST 2300 Watt Generator** • (5) 50 Gallon Skid Mounted Fuel Tanks-(2) with containment • 50 Gallon Transfer Tanks, with pumps • Pickup Step Fuel Tanks, with 12 volt pumps

**SEWER AND WATER UTILITY TOOLS AND EQUIPMENT**



**POWER RAM 1425 Hydraulic Rod Pusher/Puller**, with 45'x1-3/4" threaded rod, 42,420# of pushing capacity, and 35,030# pulling capacity • (3) **MUELLER B-100 Pipe Taps and Accessories** • (2) **MUELLER Power Tap Drives** • **FOOTAGE TOOLS 2-5/8" Pneumatic Piercing Tool** • (2) **SCHONSTADT Magnetic Pipe/Cable Locators** • (4) **SPECTRA PRECISION Dial-Grade Pipe Lasers** • **CHERNE Gas Powered Vacuum Test Pump** • 190 PSI Gas Powered Hydrostatic Test Pump • **CHERNE Air-Loc 18"-30" Plate Style and 24" Bladder Style Manhole Vacuum Testers** • (2) **LANSAS 15"-30" Inflatable Test Plugs** • (2) 12"-18" Inflatable Test Plugs • (2) 10"-12" Inflatable Test Plugs • Various **CHERNE 4"-21" Pneumatic Pipe Plugs** • **CHERNE & HURCO 24", 18", 10", & 8" Test Mandrels** • **WHEELER Hydraulic Soil Pipe Cutter** • **RIGID Manual Soil Pipe Cutter** • Saddle Cutter • **ALLEGRO 12 Volt Manhole Blower** • Pipe Lifting Clamps-12", 8", 6", & 4" Capacity • Manhole Lifting Spreader Beams • Water Meters • Copper Tubing & Crimping Tools • Brass Fittings and Valves • Various Pipe Material to Include: **FERNCO Fittings; Repair Sleeves; Ductile Iron Fittings; Pipe Joint Lubricant; & Pipe Gaskets** • Assorted **SDR35 & SCHD40 PVC Pipe and Fittings; ADS Corrugated Plastic Pipe; 4" & 6" Perforated Flexible Drain Tile; (5) 20" Steel Flume Pipe (15'-20' sections)** • Precast Inlets; Risers, & Transitions



**TRENCH BOXES, ROAD PLATE, AND CONCRETE FORMS**

**Trench Boxes:** **GME 27"-42" Hydraulic Shoring** • **ULTRA SHORE S47-84 Aluminum Shoring with wheel kit** • **GME 8'x24"** • (2) **GME 8'x20"** • **EFFICIENCY 8'x16"** • **GME 4'x20" Stacking Box with lugs** • 8'x8'x8" Manhole Box • 8" Diameter Spreaders (Various Lengths) • **Road Plate:** 10'x4'x1"; 8'x4'x1"; 10'x6'x3/4"; 8'x9'x3/4"; (2) 8'x6'x3/4"; 8'x4'x3/4" • **Concrete Forms and Equipment:** (44) 18"x10" Steel Curb Forms • (18) 18"x10" Steel Radius Forms • 7/8"x30" Curb Pins • 1 Cubic Yard Concrete Drop Bucket • (10) Concrete Blankets • Mortar Pans



**NEVER A BUYER'S PREMIUM!**



**Dagostino  
Company, Inc.**



**Notice:** The owners of Dagostino Company, Inc., a sewer, water, and underground utility contractor for over (60) years, have decided to close operations and completely liquidate in order to retire and pursue other interests. Everything in the auction is owned by Dagostino Company and must sell to the highest bidder, regardless of price, without reserves or Buyer's Premium!

**Auctioneer's Note:** All equipment has been purchased new and/or rental conversion and maintained by Dagostino with local dealership support. Please plan to attend this one-owner complete liquidation!

**Location:** The auction will be held at the Dagostino facility located at 1440 Industry Road, Hatfield, PA 19440

**Terms:** Payment in full is required on sale day by cash, certified funds, or check with a bank letter of guarantee. Sample letter of guarantee: "We hereby guarantee the payment of our customer written on his account up to \$\_\_\_\_\_ dollars for purchases at your auction sale on December 15, 2010." All guaranteed checks should be made payable to Hunyady Auction Co. Never A Buyer's Premium!

**Financing:** Financing is available; please contact Susan at Hunyady Auction Company for complete details.

**Sales Tax:** Since this contractor is selling items not normally sold in the course of his business, the Commonwealth of Pennsylvania considers this an isolated sale and does not require the auction company to collect sales tax

**Inspection:** Items will be available for inspection beginning one week prior to the auction and continuing through sale day, from 8:00 a.m. until 5:00 p.m. The site will be closed Saturday and Sunday, December 11 and 12. Items may also be inspected sale day morning beginning at 7:00 a.m.

**Removal:** After complete payment, all sale items may be removed on sale day as long as the removal activity is not disruptive to the sale and only until 5:00 p.m. Items may also be removed Thursday and Friday, December 16 and 17, and Monday, December 20 thru Wednesday, December 22, 2010 from 8:00 a.m. until 5:00 p.m. All items must be removed no later than Wednesday, December 22, 2010 at 5:00 p.m.

**Sale Site Directions: FROM INTERSTATE 476 (PA Turnpike Northeast Extension):** Exit #31 (Lansdale) Proceed through tollbooth to traffic light and turn left onto Sumneytown Pike. Continue (1.0) miles to 5th traffic light and turn left onto Troxel Road. Proceed (2.7) miles (Troxel Road will become Orvilla Road) and turn right onto Schwab Road. Continue (0.5) miles and turn left onto Industry Road, proceed (1/4) mile to sale site on left.

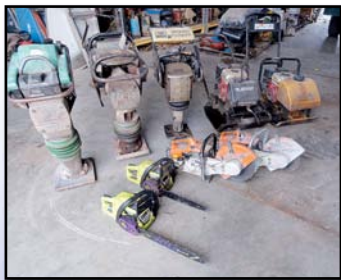
**FROM PA TURNPIKE (Interstate 276):** Exit #339 (Fort Washington), proceed to Route 309 North and follow (8.8) miles and veer left onto Route 463 West (Cowpath Road). Follow (2.8) miles and turn left onto Orvilla Road (Hunyady Corporate Office on Left). Continue on Orvilla Road (0.5) miles and cross railroad tracks and turn left onto Schwab Road. Follow (0.5) miles and turn left onto Industry Road. Continue (1/4) mile to sale site on left.

**Airport Information:** The area is serviced commercially and privately through Lehigh Valley International Airport. Rental cars are available.

**Motel Information:** Comfort Inn 678 Bethlehem Pike, Montgomeryville, PA 18936 (215) 361-3600 • Courtyard by Marriott 544 Dekalb Pike, North Wales, PA 19454 (215) 699-7247 • Inn at Towamencin 1750 Sumneytown Pike, Kulpsville, PA 19443 (215) 368-3800

**SALE SITE PHONE: (215) 631-9000 (As of Dec. 6th) SALE SITE FAX: (888) 859-8958**

**CONTRACTORS TOOLS**



- WACKER BS600 Foot Compactor
- WACKER BS60Y Foot Compactor
- MBW R420 Foot Compactor
- STONE Plate Compactor
- WACKER Plate Compactor
- STIHL TS460 Demo Saw
- (3) STIHL TS400 Demo Saws
- Diamond & Abrasive Saw Blades
- CRAFTSMAN 20" Chain Saw
- (4) POULAN 18" Chain Saws
- (3) 90# Paving Breakers; (3) 35# Clay Spades; & Rock Drill

- (2) BERGER 300B Transit • (2) BERGER 24X Auto Levels • Tripods & Grade Poles • 2-Part Chain Spreaders • 2-Part Cable Spreaders • Various Lifting Chain; Shackles; & Rigging • Road Signage; Safety Cones; Barrels • Concrete Bull Floats & Finishing Hand Tools • Turf Roller & Rotary Broadcast Spreader • Safety Harness
- (5) Wheelbarrows • Shovels; Rakes; Brooms; Lutes; Measuring Wheels • Pump Sprayers • Fuel Cans

**SHOP EQUIPMENT AND TOOLS**

- 150 Gallon Oil Tank, with hose reel & pneumatic pump • Hydraulic Engine Hoist • Engine Stand • Floor Jack & Jack Stands • Screw Jacks • HANDI-KLEEN Parts Washer • DELTA 8" Pedestal Grinder • (2) 3/4" Impact Gun • 3/4" Impact Socket Set • 150,000 BTU Kerosene Heater • (2) NESCO 5 Ton Chain Falls • Oxygen/Acetylene torch Kit • Shop Table with vise • Shop Desk; Table; & File Cabinets
- Various Hand Tools • Appliance Dolly & Hand Trucks

