

ABSOLUTE AUCTION**
Haas Environmental, Inc.
Wed., Dec. 18, 2013 – 10:00 AM
Pulaski, PA

Notice: Haas Environmental, Inc., a well-established New Jersey based total industrial cleaning service provider for the Steel and Gas & Oil industries, has elected to sell at auction specific assets, in accordance to Chapter 11, US Bankruptcy Code, Case No. 13-27297. Haas Environmental will continue to offer their services throughout Eastern US during the company re-structuring.

****Absolute Auction Notice:** For all intents and purposes, this is an Absolute Auction, however through the US Bankruptcy rules, the creditors are eligible, but not obligated, to bid on these items. Following conversations directly with those creditors, they have stated that their bidding, if any, will NOT be a reflection of debt, but merely a safety valve if any items were to bring far less than current market value.

Locations: All items will be sold from Pulaski, PA, however the items located in Burns Harbor and Blytheville will be sold "In Absentia" via photograph during the live auction in Pulaski, PA.

PULASKI, PA: 4368 US Route 422 (Benjamin Franklin Highway) Pulaski, PA 16143

BURNS HARBOR, IN: 7485 Industrial Boulevard, Chesterton, IN 46304

BLYTHEVILLE, AR: Lone Wolf Service Center, 3913 East Main St. (East State Highway 18) Blytheville, AR 72315

Sales Tax: Per PA Code 32.4 Sales or execution sales under a court order or by a court officer are consider to be "isolated sales" and therefore the auction company is not required to collect sales tax. However, purchasers of titled vehicles will be responsible for payment of sales tax at time of registration in their home state.

Removal: After complete payment, all sale items may be removed on sale day as long as the removal activity is not disruptive to the sale and only until 4:00PM. Site will be closed Saturday and Sunday Dec 21st and 22nd. All items must be removed no later than Monday Dec. 23rd at 4pm.

Sale Site Phone: (800) 233-6898

Sale Site Fax: (888) 859-8958

PA Auction License No: AY000281

1 _____ (Pulaski, PA)
AIRMAN PDS185S, 185CFM Portable Air Compressor, s/n 53-6A10486, Isuzu diesel, e/w 175/75R13 tires. (Meter Reads 0,891 Hours) (Appearance Good; No Battery; Condition Unknown)

2 _____ (Pulaski, PA)
BRADCO 8408WX Backhoe Attachment, s/n 64214, 16" digging bucket, (2) hydraulic outriggers, and operator station. In good condition. (Fits Skid Steer)

3 _____ (Pulaski, PA)
#132 2005 FORD F-450XLT SD, 4x4 Knuckleboom Truck, VIN# 1FDXW47P35EC71664, Powerstroke V-8 turbo diesel and auto trans, e/w Ferrari P540-A2 behind cab mounted knuckleboom, s/n 92499, 2,189# 4-section knuckleboom with (2) hydraulic stabilizers, 9' mason flatbed body wit folding sides, full power package, tow package, (2) rear stabilizers, AC, dual rear wheels, and 225/70R19.5 tires. In good condition with good tires. (ODO Reads 113,962 Miles)

4 _____ (Pulaski, PA)
#109 2004 GMC G3500 Savana Closed Circuit TV Van, VIN# 1GTHG39U241190860, Vortec 6.0L, V-8 gas and auto trans, e/w Pearpoint video system with 360° camera, cable drum, Western Mule fold-a-way crane, TV monitor, Dell PC tower with Intel Core 2 processor, VCR and DVD recorders, microphone, keyboard and camera controls, AC and DC power panels, and HP printer. In good condition with good tires. (ODO Reads 81,511 Miles)

5 _____ (Pulaski, PA)
#610 INDUSTRIAL VACUUM Hurricane HST0012 Tandem Axle Portable Intermediate Vacuum Silo, VIN# 1D9BV15234W048131, Honda GX270 gas, e/w silo hydraulic raise and lower, hydraulic gate valve, (4) manual stabilizers, steel slab counterweight, 14,000# GVWR, and 235/85R16 tires. In good condition with good tires.

6 _____ (Pulaski, PA)
#409 2001 SCHWARZE A8000 Mobile Sweeper, s/n 02A80000001, JD diesel (up), side dump hopper with high-lift and vibrator, (2) 36" curb brooms, 72" vacuum intake, water spray system, hydraulic raise arrowboard, (2) hydraulic rear stabilizers, mounted on 2002 Sterling SC8000 carrier, VIN# 49HAADB52DH96162, Cummins 5.9L, 359HP diesel and auto trans, e/w dual operator stations, AC, and CC. In good condition with fair to good tires. (ODO Reads 036,546 Miles/2,565 Hours)

7 _____ (Blytheville, AR)
#410 TENNANT Sentinel Mobile Sweeper, s/n 7776, Cat diesel and hydrostatic trans, e/w 5' main broom, (2) gutter brooms, dumping hopper with hydraulic tailgate, and 7.00x12 solid tires. In fair condition with fair tires. (Meter Reading N/A) (Needs Front Tie Rod and Batteries; Engine Exhaust Disassembled)



8 _____ (Blytheville, AR)
#89 2004 GMC C4500 Crew Cab Gooseneck Truck, VIN# 1GDE4E1204F516171, Duramax 6.6L diesel and Allison auto trans, e/w shopmade steel diamond plate body with gooseneck ball, 13,500# rears and 7,000# front axle, fuel cell and 12 volt pump, pintle tow package, power windows, locks, and mirrors, dual rear wheels, AC, and 225/70R19.5 tires. In fair condition with good tires. (ODO Reading N/A) (Bad Fuel Pump; Interior Panels Removed)



- 9 _____ (Blytheville, AR)
#080 2001 CHEVROLET 3500 Crew Cab Flatbed Truck, VIN# 1GCJC33U51F154469, Vortec V-8 gas and auto trans, e/w 9' steel flatbed with gooseneck ball, pintle tow package, power windows and locks, AC, and 215/80R16 tires. In fair condition. (ODO Reads 201,569 Miles) (Hood, Fender, and Bumper Damage)



- 10 _____ (Pulaski, PA)
#329 2006 INTERNATIONAL 7600 Tandem Axle Dust Control Water Truck, VIN# 1HTWYAHT76J351386, Cummins ISM diesel and Eaton Fuller 8LL trans, e/w Amthor 4,700 gallon steel water body with front, rear, and side air actuated spray heads, cab controls, 44,000# rears and 20,000# front axle, rubber block/beam suspension, 3-stage engine brake, Berkley 3" rear hydraulic water pump, 235" wheelbase, AC, double frame, 425/65R22.5 front and 11R24.5 tires. In good condition with good tires. (ODO Reads 51,015 Miles/6,419 Hours)

- 11 _____ (Pulaski, PA)
#328 2006 INTERNATIONAL 7600 Tandem Axle Dust Control Water Truck, VIN# 1HTWYAHT96J351387, Cummins IXM diesel and Eaton Fuller 8LL trans, e/w Amthor 4,700 gallon steel water body with front, rear, and side air actuated spray heads, cab controls, 44,000# rears and 20,000# front axle, rubber block/beam suspension, 3-stage engine brake, Berkley 3" rear hydraulic water pump, 235" wheelbase, AC, double frame, toolbox, 425/65R22.5 front and 11R24.5 tires. In fair to good condition with fair tires. (ODO Reads 54,525 Miles/4,225 Hours) (Left Spray Head and Headlamp Assembly Removed)

- 12 _____ (Pulaski, PA)
#319 2005 STERLING Acterra Tandem Axle Dust Control Water Truck, VIN# 2FZHCHDC95AU67977, Cat C-7, 7.2L diesel, e/w 4,000 gallon steel water body with front, rear, and side air actuated spray heads, cab controls. Reported good condition. (Not Inspected)

- 13 _____ (Burns Harbor, IN)
#323 2007 STERLING L7500 Tandem Axle Dust Control Water Truck, VIN# 2FZHATDC07AX22124, Cat C7 diesel and Roadranger 8LL trans, e/w United 4,000 gallon water body with front, rear, and side air actuated spray heads with cab controls, 40,000# rears and 18,000# front axle, spring/beam suspension, air conditioning, 315/80R22.5 front and 11R22.5 rear tires. In fair to good condition with fair to good tires. (Batteries Dead - Truck Reported Good) (Minor Hood Damage)



- 14 _____ (Pulaski, PA)
#350 2012 FREIGHTLINER Business Class M2 Tri-Axle 4,800 Gallon Water Truck, VIN# 1FVMC50V7CHBJ9723, Detroit DD13, 500HP diesel and Eaton Fuller 10 spd trans, e/w Progress VA81-406AZ, 4,800 gallon aluminum single compartment water tank, s/n C5729, NVE 866 water cooled pump package, heat collar, oilfield bumper, and drip pan, 44,000# rears, 20,000# front and 13,200# lift axle, air ride suspension, 2-stage engine brake, double frame, CC, AC, toolbox, steerable 3rd lift axle, 235" wheelbase, 77,200# GVWR, 425/65R22.5 front and 11R22.5 rear tires. In good condition with good tires. (ODO Reads 46,608 Miles)

- 15 _____ (Pulaski, PA)
 #342 2012 KENWORTH T800 Tri-Axle Liquid Vactor Truck, VIN# INKDX4TX4CJ299048, Cummins ISX 15, 525HP diesel and Eaton Fuller 10 spd trans, e/w CurryVac 4,700 gallon vactor body, Masport PTO driven vacuum pump, 46,000# rears, 20,000# front, and 18,750# lift axle, Paccar torsion-flex suspension, 3-stage engine brake, double frame, CC, AC, (2) toolboxes, power windows and locks, 257" wheelbase, 84,740# GVWR, 385/65R22.5 front and 11R22.5 rear tires. In good condition with good tires. (ODO Reads 110,021 Miles/5,677 Hours)
- 16 _____ (Pulaski, PA)
 #343 2012 PETERBILT 388 Tri-Axle Liquid Vactor Truck, VIN# 1NPWX4EX4CD141937, Cummins ISX15, 500HP diesel and Eaton Fuller 8 spd trans, e/w VSI 4,800 gallon vactor body, Transway PTO driven vacuum pump, 46,000# rears, 20,000# front and 20,000# lift axle, steerable 3rd lift axle, Paccar suspension, 3-stage engine brake, double frame, power windows and locks, AC, toolbox, 273" wheelbase, 80,000# GVWR, 315/80R22.5 front and 11R22.5 rear tires. In good condition with good tires. (ODO Reads 91,496 Miles/4,827 Hours)
- 17 _____ (Pulaski, PA)
 #344 2012 PETERBILT 388 Tri-Axle Liquid Vactor Truck, VIN# 1NPWL40X9CD148093, Cummins ISX15, 500HP diesel and Eaton Fuller 8LL trans, e/w CurryVac 4,700 gallon liquid vactor body, Masport PTO driven vacuum pump, 46,000# rears and 20,000# front axle, Hendrickson steerable lift axle, Paccar rubber block suspension, 3-stage engine brake, double frame, (2) rear toolboxes, full power package, CC, air conditioning, 272" wheelbase, 66,000# GVWR, 315/80R22.5 front and lift and 11R24.5 rear tires. In good to very good condition with good to very good tires. (ODO Reads 105,840 Miles/5,682 Hours)
- 18 _____ (Pulaski, PA)
 #341 2011 FREIGHTLINER Business Class M2 Tri-Axle Liquid Vactor Truck, VIN# 1FVMC5DV0BHBA9870, Detroit DD13, 12.8L, 500HP diesel and Eaton Fuller 8LL trans, e/w PresVac PV-4600 liquid vactor body, Masport HXL400W PTO driven vacuum pump, s/n K11029, 46,000# rears, 20,000# front and lift axles, steerable air lift 3rd axle, spring/beam suspension, 2-stage engine brake, CC, air conditioning, 259" wheelbase, 86,000# GVWR, 6" discharge with 4" reducer, 425/65R22.5 front, 315/80R22.5 lift, and 11R22.5 rear tires. In good condition with fair tires. (ODO Reading N/A; No Batteries; Right Front Flat; 2 Rear Wheels Removed)
- 19 _____ (Pulaski, PA)
 #338 2009 MACK GU713 Tri-Axle Liquid Vactor Truck, VIN# 1M2AX09689M006739, Mack MP8, 415C, 338HP diesel and Maxitorque 10 spd trans, e/w CurryVac 4,800 gallon liquid vactor body, Masport PTO driven vacuum pump, 44,000# rears and 18,000# front axle, steerable 3rd lift axle, Mack camelback suspension, engine brake, PTO, double frame, CC, AC, 267" wheelbase, 73,280# GVWR, 315/80R22.5 front and 11R22.5 rear tires. In good condition with good tires. (ODO Reads 115,091 Miles/6,783 Hours)
- 20 _____ (Pulaski, PA)
 #337 2009 MACK GU713 Tri-Axle Liquid Vactor Truck, VIN# 1M2AX09C499M006740, Mack MP8, 415C, diesel and Maxitorque 10 spd trans, e/w 2010 CurryVac 4,700 gallon liquid vactor body, Masport PTO driven vacuum pump, s/n S06329C, 44,000# rears, 18,000# front, steerable air lift 3rd axle, camelback suspension, 2-stage engine brake, double frame, oilfield bumpers, CC, AC, 264" wheelbase, 73,280# GVWR, 315/80R22.5 front and 11R22.5 rear and lift tires. In good condition with good tires. (ODO Reads 89,427 Miles/5,585 Hours)

21 _____ (Pulaski, PA)
#340 2004 KENWORTH W900-B Tri-Axle Liquid Vactor Truck, VIN# VNKWLOEX644R060498, Cummins ISM 350V, 335HP diesel and Eaton Fuller 8LL trans, e/w 2010 (reman) Tiger General 4,700 gallon vactor body, s/n 90-8169, hydraulic dump, NVE 367 vacuum pump, 46,000# rears and 20,000# front axle, steerable 3rd lift axle, Paccar block and beam suspension, 2-stage engine brake, PTO, single frame, heat, AC, toolbox, 275" wheelbase, 78,000# GVWR, 385/65R22.5 front and 11R22.5 rear tires. In good condition with good tires. (ODO Reads 098,586 Miles/1,748 Hours)

22 _____ (Pulaski, PA)
#321 2001 FREIGHTLINER Century Class Tandem Axle Liquid Vactor Truck, VIN# 1FUJA3C641PH00460, Detroit 60 Series, 430HP diesel and Eaton Fuller auto trans, e/w 2006 PresVac 3,000 gallon liquid vactor body, s/n 05067345, PresVac PV750, 360CFM vacuum pump, 40,000# rears and 18,000# front axle, air ride suspension, 3-stage engine brake, PTO, CC, AC, 230" wheelbase, 52,000# GVWR, 315/80R22.5 front and 11R22.5 rear tires. In fair condition with good tires. (ODO Reading N/A)

23 _____ (Pulaski, PA)
#339 2001 MACK RD688S Tri-Axle Liquid Vactor Truck, VIN# 1M2P267C11M059768, Mack E7-350, 350HP diesel and Eaton Fuller 8LL trans, e/w PresVac 4,000 gallon liquid vactor body, s/n 0202-6293, Masport HXL20WLCTV PTO driven vacuum pump, s/n 11171, 44,000# rears and 18,000# front axle, airlift and 3rd axles, camelback suspension, 2-stage engine brake, 6" rear discharge, 240" wheelbase, 82,000# GVWR, AC, 385/65R22.5 front and 11R34.5 rear tires. In fair to good condition with fair to good tires. (ODO Reads 149,241 Miles/7,658 Hours) (No Tires On Lift Axle)

24 _____ (Burns Harbor, IN)
#269 2002 FREIGHTLINER FL80 Tandem Axle Liquid Vactor Truck, VIN# 1FVHBXAK92HJ72400, Cat diesel and Eaton Fuller 10 spd trans, e/w PresVac 3,200 gallon vactor body, s/n PV320002016116, hydraulic unloading pump, PresVac vacuum pump, 14,000# rears and 20,000# front axle, spring suspension, engine brake, AC, 54,000# GVWR, 12R22.5 front and 11R22.5 rear tires. In good condition with good tires. (ODO Reads 19,669 Miles) (Inspected At Chicago Mill)



25 _____ (Burns Harbor, IN)
#228 1997 FORD Louisville 8500 Tandem Axle High Pressure Liquid Vactor Truck, VIN# 1FDYW86E9VVA34298, 6 cylinder diesel and Eaton Fuller 9 spd trans, e/w Guzzler Predator 3,200 gallon vactor body, PTO driven vacuum pump, hydraulic dump and tailgate, manual locks, Fruitland hydraulic unloading pump, 34,000# rears and 14,600# front axle, spring/beam suspension, 48,600# GVWR, 315/80R22.5 front and 11R22.5 rear tires. In fair condition with fair to good tires. (ODO Reads 105,252 Miles) (No Batteries - Truck Reported Good)



26 _____ (Burns Harbor, IN)
 #229 1999 FREIGHTLINER Tandem Axle Liquid Vactor Truck, VIN# 1FUJDSEB4XDA43431, Detroit 60 Series, 12.7L diesel and Eaton Fuller 10 spd trans, e/w Cusco 3,150 gallon vactor body, hydraulic dump and tailgate, manual locks, Wittig hydraulic vacuum pump, 40,000# rears and 12,000# front axle, air ride suspension, 2-stage engine brake, AC, 52,000# GVWR, 315/80R22.5 front and 11R22.5 rear tires. In fair condition with fair tires. (ODO Reads 503,403 Miles) (Dead Battery; Missing Few Batteries; Battery Box Cover; Hose Tray Rotted)



27 _____ (Blytheville, AR)
 #SC300 2002 FORD L8000 Tandem Axle Liquid Vactor Truck, VIN# 1FDZY82A62VA41871, Ford 270HP diesel and Eaton Fuller 8LL trans, e/w Cusco 3,000 gallon liquid vactor body, hydraulic dump and tailgate, manual locks, Allestimenti M9 hydraulic vacuum pump, hydraulic off-loader pump, 40,000# rears and 12,000# front axle, spring/beam suspension, 52,000# GVWR, 385/65R22.5 front and 11R22.5 rear tires. In fair to good condition with good tires. (ODO Reads 126,536 Miles)



28 _____ (Blytheville, AR)
 #SC301 1990 FORD L8000 Tandem Axle Liquid Vactor Truck, VIN# 1FDZY82A8LVA43010, Ford 7.8L diesel and Eaton Fuller 9 spd trans, Cusco 3,000 gallon liquid vactor body, hydraulic dump and tailgate, manual locks, Cusco hydraulic blower, 15 PSI vacuum, 25 PSI unloading, 48,000# rears and 12,000# front axle, spring/beam suspension, 60,000# GVWR and 11R22.5 tires. In fair to good condition with fair to good tires. (ODO Reads 132,542 Miles) (Cusco Vactor Body Good; Truck Needs PTO Pump and Gear Box)



29 _____ (Blytheville, AR)
 #305 1992 GMC Topkick Single Axle Liquid Vactor Truck, VIN# GDM7H1J6NJ514998, Cat 3116 diesel and 6 spd manual trans, e/w PresVac 2,200 gallon liquid vactor body, hydraulic dump and tailgate, manual locks, and 11R22.5 tires. (ODO Reads (045,912 Miles) (Missing Vacuum Pump, Gear Box, and PTO Pump; Truck For Parts)



30 _____ (Blytheville, AR)
#304 1991 MACK CH612 Single Axle Liquid Vactor Truck, VIN# 1M2AA0881MW002040, Mack EM7-300, 300HP diesel and Maxitorque 5 spd trans, e/w 1990 PresVac 2300 liquid vactor body, hydraulic gate valves, 15 PSI vacuum loading, 35 PSI unloading, 21,000# rears and 12,000# front axle, spring suspension, and 11R24.5 tires. In fair condition with good tires. (ODO Reads 069,875 Miles) (Missing Vacuum Pump and Gear Box; Batteries Removed)



31 _____ (Pulaski, PA)
#264 2005 STERLING L7500 Single Axle Combo Jetter/Vactor Truck, VIN# 2FZAATDC35AN95366, Cat C-7 diesel and Allison auto trans, e/w Vac-Con V390LHA liquid vacuum body, Cummins 3.9L diesel, hydraulic driven vacuum pump, Meyers hydraulic driven triplex pump, right and left side poly fluid tanks, hydraulic loading boom with 8" suction hose, front mounted swing out jetter reel, 23,000# rear and 18,000# front axle, spring suspension, AC, 228" wheelbase, 41,000# GVWR, 385/65R22.5 front and 11R22.5 rear tires. In good condition with good tires. (ODO Reads 26,403 Miles/1,076 Hours)

32 _____ (Pulaski, PA)
#276 2003 STERLING L7500 Tandem Axle Combo Jetter/Vactor Truck, VIN# 2FZPATAK93AK74648, Cat C-12 diesel and Allison auto trans, e/w Vac-Con VPD4216LHA, 3,000 gallon liquid vacuum body, hydraulic dump and tailgate, Cummins 3.9L diesel, hydraulic driven vacuum pump, Bean hydraulic driven water pump, right and left side fluid tanks, hydraulic loading boom with 8" suction hose, front swing out jetter reel, 40,000# rears and 20,000# front axle, Hendrickson spring/beam suspension, AC, 240" wheelbase, 60,000# GVWR, 425/65R22.5 front and 11R22.5 rear tires. In good condition with good tires. (ODO Reads 100,445 Miles/9,631 Hours) (Power Steering Pump Bad)

33 _____ (Pulaski, PA)
#262 2002 STERLING Tandem Axle Combo Jetter/Vactor Truck, VIN# 2FZHAZAS72AJ75358, Cat C-12 diesel and Eaton Fuller 10 spd trans, e/w Vac-Con V312LHA, 3,000 gallon liquid vacuum body, hydraulic dump and tailgate, Deutz 110HP diesel, hydraulic driven vacuum pump, Bean hydraulic driven water triplex pump, right and left side fluid tanks, hydraulic loading boom with 8" suction hose, front swing out jetter reel, 46,000# rears and 20,000# front axle, Hendrickson spring/beam suspension, heat, AC, 252" wheelbase, 66,000# GVWR, 425/65R22.5 front and 11R22.5 rear tires. In fair to good condition with good tires. (ODO Reads 046,267 Miles/8,269 Hours) (Power Steering Pump Bad)

34 _____ (Pulaski, PA)
#263 2000 MACK RD690S Tandem Axle Combo Jetter/Vactor Truck, VIN# 1M2P264C1YM029443, Mack EM7-300 diesel, e/w Vactor V2115 liquid vacuum body, hydraulic dump and tailgate, hydraulic loading boom, front swing out jetter reel. Reported good condition. (Not Inspected)

35 _____ (Burns Harbor, IN)
#247 2002 STERLING L9500 Tandem Axle Hydro Excavator Vactor Truck, VIN# 2FZHAZAS72AJ76073, Cat C-12 diesel and Eaton Fuller 10 spd trans, e/w Vactor 2112-PD liquid vactor body, hydraulic dump and tailgate, hydraulic tool circuit, Roots PTO vacuum pump, (3) 2,000 gallon aluminum water tanks, 2,500 PSI spray system, hydraulic loading boom with remote control, 46,000# rears and 20,000# front axle, Hendrickson spring/beam suspension, AC, aluminum wheels, 425/65R22.5 front and 11R22.5 rear tires. In fair condition with fair to good tires. (ODO Reads 126,353 Miles/06,979 Hours) (Batteries Dead - Truck Reported Good) (Hood and Bumper Damage)



36 _____ (Blytheville, AR)
#248 2001 MACK CL713 Tandem Axle Hydro Excavator Truck, VIN# 1M2AD38CX1M011540, Mack E7-400, 400HP diesel and Eaton Fuller 10 spd trans, e/w AHE liquid vactor body, hydraulic tailgate with debris sweeps, Hibon belt drive (PTO) vacuum pump, Extend-A-Boom 36' hydraulic rotating loading boom with remote control, hydraulic driven heated pressure washer with wand, camelback suspension, double frame, CC, air conditioning, 425/65R22.5 front and 11R22.5 rear tires. In fair to good condition with fair to good tires. (ODO Reads 040,104 Miles/04,679 Hours) (Batteries Removed; Truck Condition Unknown)



37 _____ (Pulaski, PA)
#295 2012 PETERBILT 367 Tandem Axle Wet/Dry High Dump Vactor Truck, VIN# 2NP7L70X6CM147692, Cummins ISX 11.9, 425HP diesel and Eaton Fuller 10 spd trans, e/w Gap Vax HV-57 High Dump, 17 cubic yard, wet/dry vac body, 7-cyclone, hydraulic lift and dump, hydraulic tailgate and locks, vibrator, Ingersoll Rand S1AV8702 vacuum pump, hydraulic loading boom with 8" suction hose, wireless remote, PTO, 44,000# rears, 22,000# front, Hendrickson spring suspension, 3-stage engine brake, double frame, power windows and locks, air conditioning, 292" wheelbase, 66,000# GVWR, 385/65R22.5 front and 11R22.5 rear tires. In good to very good condition with good tires. (ODO Reads 26,776 Miles/1,841 Hours)

38 _____ (Burns Harbor, IN)
#286 2007 STERLING L9500 Tandem Axle Wet/Dry Vactor Truck, VIN# 2FZHAZDE87AY64791, Cat C-13 diesel and Eaton Fuller 10 spd trans, e/w VacAll wet/dry vac body (00,427 hours), hydraulic dump, half tailgate and locks, PTO vacuum pump, 46,000# rears, 20,000# front, spring suspension, air conditioning, 275" wheelbase, 66,000# GVWR, 425/65R22.5 front and 11R22.5 rear tires. In good condition with good tires. (ODO Reads 35,843 Miles/2,788 Hours)



39 _____ (Burns Harbor, IN)
#237 2003 STERLING L9500 Tandem Axle Wet/Dry Vactor Truck, VIN# 2FZHAZAN83AK40844, Cat diesel and Eaton Fuller 10 spd trans, e/w 2002 Guzzler (XXS4118TC), 2,300 gallon wet/dry vactor body, PTO driven vacuum pump, hydraulic dump, half tailgate and locks, body vibrator, 46,000# rears and 18,000# front axle, spring/beam suspension, 64,000# GVWR, 385/65R22.5 front and 11R22.5 rear tires. In fair condition with fair to good tires. (ODO Reads 27,270 Miles/16,680 Hours)



40 _____ (Blytheville, AR)
#224 2003 STERLING L7500 Tandem Axle Wet/Dry Vactor Truck, VIN# 2FZHATAK93AK74648, Cat 3126 diesel, e/w Guzzler Ace wet/dry vactor body, hydraulic dump, tailgate and locks, PTO vacuum pump, 27" Hg vacuum pump. Reported good condition. (Not Inspected)

41 _____ (Burns Harbor, IN)
#285 2002 INTERNATIONAL 2674 Tandem Axle Wet/Dry Vactor Truck, VIN# 1HTGLATT02H511426, Cat C-10, 385HP diesel and Eaton Fuller 8LL trans, e/w Guzzler Ace wet/dry vactor body, s/n 01-10G-4009 (1,912 hours), hydraulic dump, half tailgate and locks, 46,000# rears and 18,000# front axle, spring/beam suspension, 64,000# GVWR, 258" wheelbase, 425/65R22.5 front and 11R22.5 rear tires. In good condition with good tires. (ODO Reads 131,734 Miles) (Inspected At Chicago Mill)



42 _____ (Pulaski, PA)
#242 2002 MACK RD688S Tandem Axle Wet/Dry Vactor Truck, VIN# 1M2P267C12M063675, Mack E-7 350, 350HP diesel (reman May 2010) and Eaton Fuller 8LL trans, e/w Gap Vax wet/dry vacuum body, Hibon SIAV-8703 vacuum pump, 7-cyclone, hydraulic dumping, tailgate and locks, hydraulic loading boom with 8" suction hose, Hy-Rail gear, 46,000# rears and 20,000# front axle, camelback suspension, engine brake, double frame, CC, AC, 292" wheelbase, 385/65R22.5 front and 11R22.5 rear tires. In good condition with good tires.

43 _____ (Burns Harbor, IN)
#222 2001 INTERNATIONAL 2674 Tandem Axle Wet/Dry Vactor Truck, VIN# 1HTGLATT01H362093, Cat C-10 diesel and Eaton Fuller 10 spd trans, e/w Guzzler (XXS4116TC), 2,300 gallon wet/dry vactor body, hydraulic dump and half tailgate, vibrator, Roots PTO driven vacuum pump, 45,000# rears and 18,000# front axle, spring/beam suspension, 63,000# GVWR, Hy-Rail gear (condition unknown-not used), 385/65R22.5 front and 11R22.5 rear tires. In good condition with fair to good tires. (ODO Reads 237,981 Miles)



44 _____ (Blytheville, AR)
#SC202 1999 VOLVO Tandem Axle
Wet/Dry Vactor Truck, VIN#
4VHJCBJF3XN863448, Cummins N14,
350HP diesel and Eaton Fuller 9 spd trans,
e/w Gap Vax wet/dry vactor body,
7-cyclone, hydraulic dump, tailgate and
locks, PTO driven vacuum pump, 44,000#
rears and 18,000# front axle, spring/beam
suspension, 385/65R22.5 front and
11R22.5 rear tires. In good condition with
good tires. (ODO Reading N/A-Dead
Batteries)



45 _____ (Blytheville, AR)
#209 1999 INTERNATIONAL 2574
Tandem Axle Wet/Dry Vactor Truck, VIN#
1HTGLATT0XH649656, Cat C-10, 305HP
diesel and Eaton Fuller 10 spd trans, e/w
Guzzler Ace (AXXCF4116TC), 2,300 gallon
wet/dry vactor body, Roots PTO vacuum
pump, hydraulic dump and tailgate, locks,
body vibrator, spring/beam suspension,
AC, and 11R22.5 tires. In good condition
with good tires. (ODO Reads 184,671
Miles)



46 _____ (Blytheville, AR)
#212 1999 INTERNATIONAL 2674
Tandem Axle Wet/Dry Vactor Truck,
VIN#1HTGLATT7XH609540, Cat C-10,
305HP diesel and Eaton Fuller 10 spd
trans, e/w Guzzler ACE (AXXCF4116TC),
2,300 gallon wet/dry vactor body, PTO
driven vacuum pump, hydraulic dump,
tailgate and locks, vibrator, spring/beam
suspension, and 11R22.5 tires. In good
condition with good tires. (ODO Reads
253,042 Miles) (VIN# From Records)



47 _____ (Burns Harbor, IN)
#219 1999 INTERNATIONAL 2674
Tandem Axle Wet/Dry Vactor Truck, VIN#
1HTGLATT0XH671118, Cat 3176 diesel,
e/w Guzzler Ace PWO3740 wet/dry vactor
body, hydraulic dump, tailgate and locks,
PTO vacuum pump. Reported good
condition. (Not Inspected)

48 _____ (Burns Harbor, IN)
#225 1999 VOLVO Tandem Axle Wet/Dry
Vactor Truck, VIN#
4VHJCBPF3XN866518, Cummins CM11,
330HP diesel and Eaton Fuller 9 spd trans,
e/w Gap Vax wet/dry vactor body, Hibon
vacuum pump, 6-cyclone, hydraulic dump
and tailgate, 40,000# rears and 16,000#
front axle, leaf spring/beam suspension,
cruise control, AC, 56,000# GVWR, and
11R22.5 tires. In fair condition with fair to
poor tires. (ODO Reading N/A-Not
Operational) (Left Rear Tires Flat)



49 _____ (Blytheville, AR)
 #210 1998 INTERNATIONAL 2674
 Tandem Axle Wet/Dry Vactor Truck, VIN#
 1H2GLATT4WH572025, Cat C-10, 305HP
 diesel and Eaton Fuller 10 spd trans, e/w
 Guzzler Ace (AXXCF4116TC), 2,300 gallon
 wet/dry vactor body, hydraulic dump,
 tailgate and locks, Roots PTO vacuum
 pump, spring/beam suspension,
 315/80R22.5 front and 11R22.5 rear tires.
 In good condition with good tires. (ODO
 Reads 136,800 Miles)



50 _____ (Blytheville, AR)
 #244 2002 INTERNATIONAL 2674
 Tandem Axle Wet/Dry Vactor Truck, VIN#
 1HTGLATTX2H511417, Cat C-10, 335HP
 diesel and Eaton Fuller 10 spd trans, e/w
 Guzzler 3,000 gallon wet/dry vactor body,
 hydraulic dump, tailgate and locks, PTO
 driven blower, Wittig hydraulic unloading
 pump, spring/beam suspension,
 385/65R22.5 front and 11R22.5 rear tires.
 In fair to good condition. (ODO Reads
 012,679 Miles) (Batteries Dead - Truck
 Reported Good) (Brake Chambers on Rear
 Axle Removed)



51 _____ (Pulaski, PA)
 #238 1993 MACK CL713 Tandem Axle
 Wet/Dry Vactor Truck, VIN#
 1M2AD12Y5PW001343, Mack E9, 500HP
 diesel and Eaton Fuller 15 spd trans, e/w
 1998 PresVac Power Vac 3,250 gallon
 wet/dry vactor body, hydraulic dump and
 tailgate, manual lock, Hibon S1AV840
 vacuum pump, hydraulic unloading pump,
 44,000# rears and 18,000# front axle,
 spring/beam suspension, 2-stage engine
 brake, AC, 268" wheelbase, 62,000#
 GVWR, and 11R24.5 tires. In fair to good
 condition with fair to good tires. (ODO
 Reads 479,827 Miles/15,207 Hours) (Floor
 Rotting Out; Missing 2 Rear Wheels)

52 _____ (Blytheville, AR)
 #250A/#250 2002 BENSON/GAP VAX
 Wet/Dry Tri-Axle Vactor Trailer, VIN#
 5DMDSTCCX2B000318, Gap Vax 5,000
 gallon wet/dry vactor body, hydraulic dump,
 tailgate and locks, 8-cyclone, hydraulic
 rotating loading boom, mounted on Benson
 tri-axle trailer, 20,000# rear, front, and lift
 axles, spring suspension, and 11R24.5
 tires. In good condition with good tires

2002 VOLVO Tri-Axle Truck Tractor, VIN#
 4V5KC9UH82N330642, Cummins
 ISMV435, 435HP diesel engine and Eaton
 Fuller 15 spd trans, e/w hydraulic blower,
 46,000# rears, 18,740 front, and 13,230#
 lift axle, 48" sleeper, steerable lift axle,
 wetline system, fixed 5th wheel, 77,970
 GVWR, 385/65R22.5 front, 275/70R22.5
 lift, and 11R22.5 rear tires. In fair to good
 condition with fair to good tires. (Needs
 Clutch)



53 _____ (Burns Harbor, IN)
#268 2005 STERLING L9500 Tandem Axle Wet/Dry Vactor Truck, VIN# 2FZHAZDE55AV24088, Cat C-13 diesel (bad) and Eaton Fuller 10 spd trans, e/w Guzzler 8079 (XXS4118TC) wet/dry vactor body, hydraulic dump, half tailgate and locks, Hibon vacuum pump, body vibrator, 46,000# rears and 20,000# front axle, spring/beam suspension, 425/65R2.5 front and 11R22.5 rear tires. (Truck and Guzzler Vac Body In Good Condition-Truck Engine Blown) (No Batteries; No Radiator; Dashboard Disassembled)



54 _____ (Burns Harbor, IN)
#245 2001 INTERNATIONAL 2674 Tandem Axle Wet/Dry Vactor Truck, VIN# 1HTGLATT61H392134, Cat diesel (bad) and Eaton Fuller 10 spd trans, e/w Guzzler wet/dry vac, hydraulic dump and half tailgate, Whisp-Air vacuum pump, hydraulic unloading pump, 46,000# rears and 18,000# front axle, spring/beam suspension, 64,000# GVWR, 385/65R22.5 front and 11R22.5 rear tires. (ODO Reads 121,433 Miles) (Truck Engine Bad - Hole in Block) (Guzzler Vac Body Good-Missing (2) Tailgate Locks)



55 _____ (Burns Harbor, IN)
#241 1999 INTERNATIONAL 2574 Tandem Axle Wet/Dry Vactor Truck, VIN# 1HTGLATTXXHH627384, Cat C-10 diesel (bad) and Eaton Fuller 10 spd trans, e/w Guzzler PW03524 wet/dry vactor body, Whisp-Air PTO vacuum pump, hydraulic dump, half tailgate and locks, spring suspension, 315/80R22.5 front and 11R22.5 rear tires. (ODO Reads 238,620 Miles) (Guzzler Vac Body Good-Truck Engine Cannibalized) (Bad Clutch-Missing (2) Rear Wheels and Batteries)



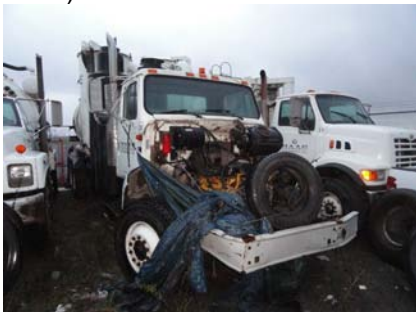
56 _____ (Blytheville, AR)
#230 1999 INTERNATIONAL 2674 Tandem Axle Wet/Dry Vactor Truck, VIN# 1HTGLATT6XH5B7160, Cat 238HP diesel and Eaton Fuller 10 spd trans, e/w Guzzler (AXXCF4116TC) wet/dry vactor body, hydraulic dump, half tailgate and locks, PTO driven blower, CC, air conditioning, 315/80R22.5 front and 11R22.5 rear tires. In fair to good condition with fair to good tires. (ODO Reads 156,571 Miles) (Guzzler Vac Body Reported Good) (Truck Air Compressor Bad; Batteries Removed; Fiberglass Hood Damage)



57 _____ (Blytheville, AR)
#234 2003 STERLING L9500 Tandem Axle Wet/Dry Vactor Truck, VIN# 2FZHAZAN43AK40839, Cat C-10 diesel and Eaton Fuller 10 spd trans, e/w Guzzler (XXS4118TC) wet/dry vactor body, hydraulic dump, tailgate and locks, 46,000# rears and 18,000# front axle, spring/beam suspension, 385/65R22.5 front and 11R22.5 rear tires. (ODO Reading N/A) (Missing Blower, Gear Box, and Silencers; Truck For Parts)



58 _____ (Blytheville, AR)
#208 1999 INTERNATIONAL 2674 Tandem Axle Wet/Dry Vactor Truck, VIN# 1HTGLATT0XH587171, Cat diesel (top end removed) and Eaton Fuller 10 spd trans (top cover removed), e/w 1998 Guzzler Ace wet/dry vactor body, hydraulic dump and tailgate, manual locks, Roots PTO driven vacuum pump, 315/80R22.5 front and 11R22.5 rear tires. (ODO Reading N/A) (Vac Body Reported Good; Truck For Parts)



59 _____ (Blytheville, AR)
#731 1995 Freightliner FL80 Tandem Axle Heated High Pressure Blaster Truck, e/w 1996 NLB 10250DT 1-1/4 Skid Mounted Heated High Pressure Blaster, s/n 692130-2, 10,000 PSI, 5 piston pump, (2) Sioux D-1000, 1,000,000 BTU burners, mounted on 1995 Freightliner FL80 Tandem Axle Flatbed, VIN# 1FVXJLBB8SL756676, Cummins M11 diesel and Eaton Roadranger trans, 24' flatbed, 34,000# rears and 12,000# front axle, spring suspension, 315/80R22.5 front and 11R22.5 rear tires. In good condition with good tires. (ODO Reads 146,934 Miles/4,391 Hours)



60 _____ (Pulaski, PA)
#32 1993 FORD L8000 Tandem Axle High Pressure Blaster Truck, e/w 1998 NLB 10300DT 1-1/4 High Pressure Blaster, s/n 898050-2, 10,000 PSI, 5 piston pump, mounted on 1993 Ford Flatbed, VIN# 1FDYW82E7PVA12485, Cummins 198HP diesel and Eaton Fuller 5 spd trans, 22' steel flatbed, 40,000# rears and 12,000# front axle, Hendrickson spring suspension, and 11R22.5 tires. In good condition with fair tires. (ODO Reads 122,710 Miles)

61 _____

62 _____ (Blytheville, AR)
 #725 1995 NLB 10250D-1 1/4 Portable High Pressure Blaster, s/n 594160-1, Cummins 335HP diesel and Eaton Fuller 4 spd trans, e/w 10,000 PSI, 5-piston pump, mounted on Big Tex tandem axle gooseneck trailer, 24'x8-1/2' steel flatbed, with water tank, hose, dual wheel axles, (2) front stabilizers, and 235/85R16 tires. In good condition with fair to poor tires. (Meter Reads 1,710 Hours) (No Trailer VIN Plate) (Trans and Drive Shaft Removed For Clutch Replacement- No Clutch) (POSSIBLE NO TITLE)



63 _____ (Pulaski, PA)
 #704 1997 NLB 1012D-1 Portable High Pressure Blaster, s/n 790101-1, Cummins diesel and twin disc PTO, e/w 10,000 PSI, 3-piston pump, mounted on tandem axle trailer with ball hitch and ST205/75R14 tires. In good condition with good tires. (Meter Reads 02,586 Hours) (Missing Jack On Trailer Tongue)

64 _____ (Pulaski, PA)
 2006 RELIABLE PUMPS Portable High Pressure Water Blaster, s/n U-1391, Perkins 6 cylinder diesel and twin disc PTO, Reliable RD610/620DT 10,000/20,000 PSI triplex plunger pump (convertible 10,000 to 20,000 PSI with plunger change), mounted on tandem axle trailer. In fair to good condition. (No VIN Plate) (NO TITLE)

65 _____

66 _____ (Blytheville, AR)
 #707 1992 NLB 1012D1 Portable High Pressure Blaster, s/n 293140-1, Cummins 5.9L diesel and twin disc PTO, e/w 10,000 PSI, 3-piston pump, mounted on tandem axle trailer, pintle tow. In good condition with good tires. (New Starter)



67 _____ (Blytheville, AR)
 #701 10,000 PSI High Pressure Blaster, s/n 587728, John Deere diesel and twin disc PTO (inspection plate opened), mounted on tandem axle trailer with pintle tow. In fair condition. (Meter Reads 4,173 Hours) (Pump for Parts) (No ID Plate)



68 _____ (Blytheville, AR)
 #706 1996 NLB 10200D-1 1/4 Portable High Pressure Blaster, s/n 696190-2, Cummins 8.3L diesel (bad) and Rockford PTO, mounted on tandem axle trailer with pintle hitch. (Meter Reads 7,442 Hours) (Blaster and Pump Reported Good; Engine Blown-Hole in Block; Radiator Removed)



- 69 _____ (Blytheville, AR)
#711 1998 NLB 10200D-1 1/4 Portable High Pressure Blaster, s/n 897230-1, Cummins 8.3L diesel, mounted on tandem axle trailer with pintle tow. (Pump Disassembled; Missing Piston; Clutch Assembly Removed)



- 70 _____ (Blytheville, AR)
#705 1996 NLB 1012D-1 Portable High Pressure Blaster, s/n 692201-1, Cummins 5.9L diesel and twin disc PTO, e/w 10,000 PSI, mounted on tandem axle trailer with ball hitch. (Meter Reads 7,422 Hours) (Bad Pump)



- 71 _____ (Pulaski, PA)
NLB 1012D-1 Portable High Pressure Blaster, s/n 798190-1, Cummins diesel and twin disc PTO, e/w 10,000 PSI, 3-piston pump, mounted on tandem axle trailer with ball hitch and ST205/75R14 tires. In fair condition with good tires. (Meter Reads 00,904 hours) (No Battery; Pump Has Been Opened Up and Missing Parts)

- 72 _____ (Burns Harbor, IN)
#719 1998 NLB 10200D-1 1/4 Portable High Pressure Blaster, s/n 891040-6, Cummins C8.3P diesel and twin disc PTO, e/w 10,000 PSI, 40 gallon tank, mounted on tandem axle tag trailer with pintle tow. (Meter Reads 03,265 Hours) (Cracked Pump Housing; Pistons Removed; Missing Trailer Tire)



- 73 _____ (Pulaski, PA)
(3) High Pressure Water Powered Floor Scrubbers. In fair condition.

Thank You For Attending!