

HYDRAULIC EXCAVATORS AND ATTACHMENTS



'07 Komatsu PC138USLC-8

2006 CATERPILLAR Model 320CL Hydraulic Excavator, s/n PAB05487, powered by Cat 3066 diesel engine and hydraulic drive, equipped with 9'6" dipper stick, Cat hydraulic quick coupler, 24" digging bucket with side cutters, hydraulic plumbing, air conditioning, light package, factory stereo, 14'7" crawlers, and 32" TBG pads. In very good condition with very good undercarriage. **(01,484 Hours) (Purchased New-Balance of Transferable Extended Power Train Warranty Through 2/15/09)**



'06 Cat 320CL



'05 Cat 315CL

ATTACHMENTS: CAT CVP110, 29"x44" Hydraulic Plate Compactor • ESCO 48" Digging Bucket with side cutters (Komatsu PC138) • ESCO 48" Clean-Up Bucket (Komatsu PC138) • CAT 48" Digging Bucket with side cutters (Cat 320) • CAT 36" Digging Bucket with side cutters (Cat 320/318) • CAT 36" Digging Bucket with side cutters (Cat 320/318) • CAT 48" Digging Bucket with side cutters (Cat 315) • CAT 60" Clean-Up Bucket with perforated sides (Cat 315)

2005 CATERPILLAR Model 315CL Hydraulic Excavator, s/n CJC03111, powered by Cat 3046T diesel engine and hydraulic drive, equipped with 10' dipper stick, hydraulic quick coupler, 24" digging bucket with side cutters, hydraulic plumbing, air conditioning, light package, 13' crawlers, and 34" TBG pads. In good to very good condition with good to very good undercarriage. **(02,070 Hours) (Purchased New-Balance of Transferable Extended Power Train Warranty Through 1/5/09)**

RUBBER TIRED LOADER AND ATTACHMENT



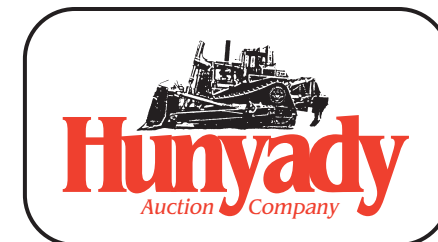
'06 Cat 924G

2006 CATERPILLAR Model 924G Rubber Tired Loader, s/n CAT0924GPDDA03277, powered by cat 3056E diesel engine and powershift transmission, equipped with general purpose 2.8 cubic yard loader bucket with bolt-on cutting edge, hydraulic quick coupler, auxiliary hydraulics, enclosed ROPS cab, air conditioning, light package, and 20.5R25 tires. In excellent condition with very good tires. **(704 Hours) (Purchased New-Balance of Transferable Extended Power Train Warranty Through 2/25/10)**

60" Fork Attachment. In good condition. (Cat 924G)



60" Fork Attachment



1440 Cowpath Rd. • Hatfield, PA 19440 • 800-233-6898 • Fax: 215-361-9212

NOTICE: Mr. Bill Long has decided to realign the direction of his approach to the excavating and utility business and sell equipment that is surplus to his present needs. Long Hauling & Excavation will continue to offer construction services to the area. Everything in the auction will sell to the highest bidder regardless of price!

AUCTIONEER'S NOTE: This is a beautiful spread of late model, well maintained equipment. Almost everything has been purchased new by Mr. Long and service records will be available. Please plan on attending this fine auction!

LOCATION: The auction will be held at the Long location at 4905 Clemens Road, Waterford, Pennsylvania 16441

TERMS: Payment in full is required on sale day by cash, certified funds, or check with a bank letter of guarantee. Sample letter of guarantee: "We hereby guarantee the payment of our customer _____ written on his account up to \$ _____ dollars for purchases at your auction sale on June 26, 2008." All guaranteed checks should be made payable to Hunyady Auction Co. **Never A Buyer's Premium!**

FINANCING: Financing is available; please contact Susan at Hunyady Auction Company for complete details.

SALES TAX: Since this contractor is selling items not normally sold in the course of his business, the State of Pennsylvania considers this an isolated sale and does not require the auction company to collect sales tax.

INSPECTION: Items will be available for inspection for one week prior to the auction from 8:00 a.m. until 5:00 p.m., with the exception of Saturday and Sunday, June 21 and 22 at which time the site will be closed. Items may also be inspected sale day morning from 7:00 a.m. until 9:00 a.m.

REMOVAL: After complete payment, all sale items may be removed on sale day as long as the removal activity is not disruptive to the sale and only until 5:00 p.m. Items may also be removed Friday, June 27, and Monday, June 30 thru Thursday, July 3, 2008 from 8:00 a.m. until 5:00 p.m. All items must be removed no later than Thursday, July 3, 2008 at 5:00 p.m.

SALE SITE DIRECTIONS: TRAVELING EAST ON INTERSTATE 90: Exit #29 (Hammett/Parade St.), at stop sign at end of ramp turn right onto Route 8 South and proceed (4.6) miles to Barton Road and turn right (road becomes West Greene Road). Proceed (3.3) miles to Clemens Road and turn left, sale site immediately on right.

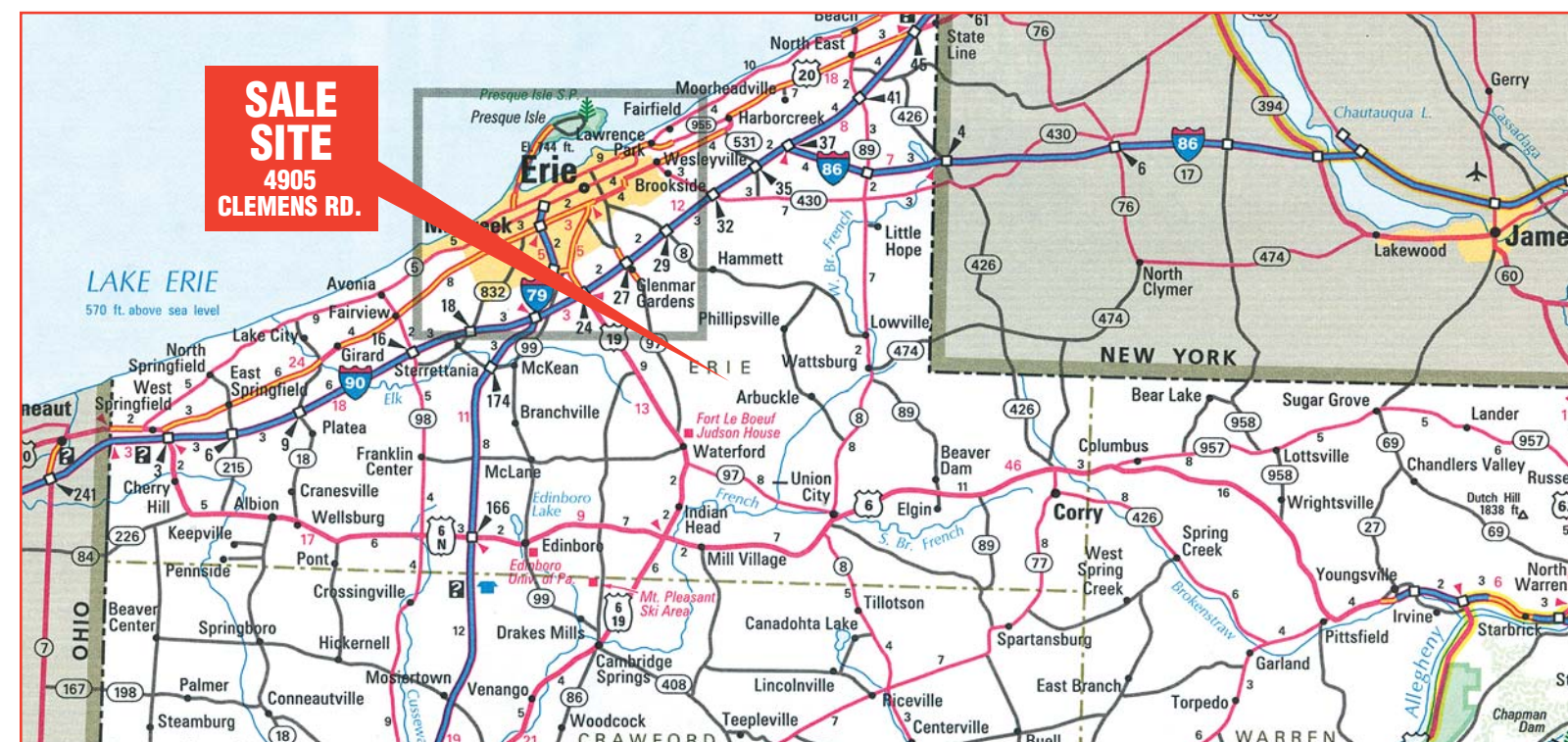
TRAVELING WEST ON INTERSTATE 90: Exit #29 (Hammett/Parade St.), at stop sign at end of ramp turn left onto Route 8 South and follow above directions.

AIRPORT INFORMATION: This area is serviced commercially and privately through Erie International Airport. Rental cars are available.

MOTEL INFORMATION: Hampton Inn (814) 866-6800 (Auction Headquarters) • Comfort Inn of Erie (814) 866-6666 • Marriott Courtyard Erie (814) 860-8300 • Holiday Inn Express (814) 217-1100. (All Hotels Are Located @ Interstate 90 and Route 19 in Erie, PA)

PA AUCTION LICENSE NO: AY000281

SALE SITE PHONE NUMBER: (814) 796-1900 • SALE SITE FAX NUMBER: (814) 796-1901



ABSOLUTE AUCTION
SURPLUS EQUIPMENT
Thursday, June 26, 2008 - 9:00 AM



'07 KOMATSU PC138USLC-8

LONG HAULING & EXCAVATION, INC.
Waterford, PA (Erie Area)



1440 COWPATH RD. • HATFIELD, PA 19440
215/361-9099 • Fax: 215/361-9212



'06 INT'L 5900i EAGLE



'06 CAT 924G



'06 JOHN DEERE 650J LT

PRE-SORTED
FIRST CLASS MAIL
US POSTAGE
PAID
HAVERTOWN, PA
PERMIT #45



CRAWLER TRACTOR



06 John Deere 650J LT

2006 JOHN DEERE Model 650J LT Crawler Tractor, s/n 123258, powered by John Deere Powertech diesel engine and push button powershift transmission, equipped with 6-way straight blade, differential steering, tow pin, ROPS canopy, light package, and 19.5" SBG pads. In excellent condition with very good undercarriage. **(744 Hours) (Purchased New-Balance of Extended Power Train and Hydraulics Warranty Through 4/17/10)**

TRACTOR LOADER BACKHOE AND ATTACHMENTS



04 Cat 420D, 4x4 Extend-A-Hoe

2004 CATERPILLAR Model 420D, 4x4 Tractor Loader Extend-A-Hoe, s/n FDP21330, powered by Cat 3054 diesel engine and shuttle transmission, equipped with Cat general purpose loader bucket with bolt-on cutting edge, 24" digging bucket, Cat rear manual quick coupler, hydraulic plumbing, enclosed ROPS cab, air conditioning, light package, and 12.5/8-18 front and 19.5Lx24 rear tires. In very good condition with good rear and good and very good front tires. **(1,700 Hours) (Purchased New)**

CAT CVP40 Hydraulic Plate Compactor (Cat 420D) • 12" Digging Bucket (Cat 420D) • CP 18" Digging Bucket (Cat 420D) • **CAT 36" Digging Bucket** (Cat 420D) • **CAT 48" Clean-Up Bucket** with perforated sides (Cat 416D)



Cat CVP40



(1) of (4) Backhoe Buckets

SKID STEER LOADERS AND ATTACHMENTS



05 ASV RC85

2005 ASV Model RC85 Posi-Track Crawler Skid Steer Loader, s/n RSF00781, powered by Perkins diesel engine and hydrostatic transmission, equipped with 72" loader bucket with bolt-on cutting edge, dual hi-flow hydraulic outlets, electric outlet, enclosed ROPS cab, air conditioning, light package, and 7'3"x18" rubber crawlers. In very good condition with very good undercarriage. **(977 Hours) (Purchased New-Balance of Extended Power Train Warranty Through 6/28/09)**

2007 KOMATSU Model SK815-5N Skid Steer Loader, s/n A30137, powered by Komatsu/Yanmar diesel engine and 2 speed hydrostatic transmission, equipped with 68" loader bucket with bolt-on cutting edge, dual high flow hydraulic outlets, electric outlets, light package, and 10x16.5 tires. In good condition with fair tires.



07 Komatsu SK815-5N

BOBCAT 72" Root/Grapple Bucket, s/n 029200832 • **BOBCAT 84" Hydraulic Angle Broom**, s/n 231412054 • **BOBCAT 15C Hydraulic Auger Attachment**, s/n 944222221, with 12" auger • **BRADCO 48" Fork Attachment** • **FFC 72" Bucket** with bolt-on cutting edge • (4) 10x16.5 Tires

COMPACTOR



04 IR SD-70DTF

2004 INGERSOLL-RAND Model SD-70DTF Vibratory Compactor, s/n 176885, powered by Cummins B4.5-99C diesel engine and hydrostatic transmission, equipped with 66" smooth drum, drum cleaner, drum drive, ROPS canopy, and 14.9x24 tires. In good condition with good tires. **(01,335 Hours)**

DUMP TRUCKS



06 Int'l 5900i Eagle

2006 INTERNATIONAL Model Paystar 5900i Eagle Tri-Axle Dump Truck, powered by Cat C-15, 475HP diesel engine and Eaton Fuller 18 speed transmission, equipped with J&J 18' aluminum dump body with chute and electric tarp, 46,000# rears, 20,000# front axle, 20,000# airlift 3rd axle, Hendrickson air ride suspension, tow package with air, 3-position engine brake, aluminum wheels, air conditioning, cruise control, heated mirrors, power windows, locks and mirrors, and 385/65R22.5 front, 11R24.5 rear and 315/80R22.5 airlift axle tires. In very good condition with poor front and good rear and airlift axle tires. **(71,171 Miles) (Purchased New-Balances of Cat Engine Basic Warranty Until 3/30/09 and Extended Warranty Until 3/30/12)**



06 GMC 3500 4x4

2006 GMC Model 3500, 4x4 Single Axle Dump Truck, powered by Duramax 6.6L Turbo diesel engine and Allison automatic transmission, equipped with Crysteel 8' steel dump body with chute, dual rear wheels, air conditioning, cruise control, and 215/85R16 tires. In good condition with good tires. **(38,085 Miles) (Purchased New)**

PICKUP TRUCK



05 GMC 2500HD 4x4

2005 GMC Model 2500HD SLE, 4x4 Quad Cab Pickup Truck, powered by Duramax 6.6L Turbo diesel engine and automatic transmission, equipped with 7' bed, spray-on bed liner, cross toolbox, aluminum wheels, air conditioning, cruise control, power windows, locks and mirrors, and 265/75R16 tires. In good condition with fair to good tires. **(111,005 Miles) (Purchased New)** • Pickup Truck Fuel Tank with electric pump. In good condition.

UTILITY AND FLATBED TRUCKS



06 GMC 3500 4x4

2006 GMC Model 3500, 4x4 Utility Truck, powered by Duramax diesel engine and automatic transmission, equipped with 9' open utility body, dual fuel tanks, dual rear wheels, 105 gallon fuel tank with electric pump, air conditioning, and 215/85R16 tires. In good condition with good to very good tires. **(32,091 Miles) (Purchased New-Balance of 3 Year/36,000 Mile Basic Warranty)**



94 Dodge 3500 4x4

1994 DODGE Model Ram 3500 Laramie SLT, 4x4 Flatbed Truck, powered by Cummins 6 cylinder Turbo diesel engine and 5 speed transmission, equipped with 9' aluminum flatbed body, dual rear wheels, air conditioning, cruise control, power windows, locks and mirrors, tow package, and 215/85R16 tires. In good condition with good tires. **(New Bed In 2007)**

TRAILERS



Felburn 40' Log Trailer

FELBURN 40' Spread Axle Log Trailer, equipped with 9' axle spread and 11R22.5 tires. In fair condition with good tires. **2003 PACE Model SL818TA2, 8'x18' Tandem Axle Cargo Trailer**, equipped with 7,000# GVWR, fold-up rear door, side door, and 205/75R15 tires. In good condition with good tires. **8'x28' Tandem Axle Office/Storage Trailer**, equipped with roll-up rear door, man door, and 7x14.5 tires. In fair to good condition with good tires. **ANDERSON Single Axle Utility Trailer**, equipped with 6'3"x12" wood deck, 24" metal sides, 50" ramp gate, and 78x15 tires. In good condition with good tires. **8'-11' Extendable Pipe Wagon**, equipped with 3'8" uprights and 9.50x15 tires. In fair to good condition with fair to good tires.

SNOW REMOVAL EQUIPMENT



Pro-Tech 8' Snow Pusher



Avalanche 10' Snow Pusher

BLIZZARD 8'6" Hydraulic Angle Snow Plow, equipped with power hitch, mounting bracket, controls, and lights. In good condition • **AIRFLO 10' Stainless Steel Salt Spreader**, powered by Briggs & Stratton Intek 9HP gas engine. In good condition • **FISHER Tailgate Salt Spreader**. In good condition • **AVALANCHE 10' Bucket Mount Snow Pusher**. In very good condition • **PRO-TECH 8' Snow Pusher**, s/n 8665. In good condition.

PIPE, MATERIALS, AND MISCELLANEOUS



Ductile Iron Pipe

(29) 18' Sections of **GRIFFIN NSF-61, 12" Ductile Iron Pipe** • Precast Inlets & Collars • (1 Pallet) **LAFARGE** Type I Motors • (1 Pallet) Construction Grout • Small Quantity Plastic & Corrugated Plastic Pipe • Landscape Fabric • Metal Pipe Bands • (10 Pallets) Landscape & Retaining Blocks • Small Quantity of Pallet Racking • Small Quantity of Scrap Steel • Small Quantity of Copper Tubing • Small Quantity of Pipe Couplings & Fittings • (4) Water Keys • Miscellaneous

PIPE TOOLS, TRENCH BOXES, AND ROAD PLATE



Mueller B101



Efficiency 8'x8'

MUELLER B101 Pipe Tap with accessories • **KUNDEL 8'x20'x5" Trench Box** with 36" spreader (Certification) • **EFFICIENCY XLAP-88, 8'x8' Aluminum Trench Box**, s/n 132491, with 36"-60" adjustable spreader (Certification) • 7'2"x15'10" Shop Made Trench Box with 36" spreaders • 7'6"x16'x7" Trench Box • 6'x14'x3'9" High Shop Made Gravel Box • (4) 30" and (4) 36" Spreaders • (2) 8'x20'x3/4" Road Plate • (2) 5'x10'x3/4" Road Plate • (3) 5'x10'x1/4" Road Plate • (4) 2'x10'x5/8" Road Plate

CONTRACTORS AND SHOP TOOLS



07 Miller Bobcat 225



Stone 95CM Cement Mixer



MI-T-M HSP-3504-3MGH

2007 MILLER Model Bobcat 225 Portable Welder/Generator, s/n LH070512H, powered by Kohler CH23S, 2 cylinder gas engine, equipped with leads and cover. In very good to excellent condition. **(56 Hours)**

2004 HOBART Model Handler 180, 230 Volt Wire Feed Electric Welder, s/n LE298109, equipped with cart, bottle, and gun. In good condition.

CORE CUT Model CC1800XL Walk-Behind Concrete Saw, s/n 1303589, powered by Honda 20HP, gas engine and hydrostatic transmission, equipped with 18" blade capacity and water system. In very good condition. **(74 Hours)**

STONE Model 95CM Portable Cement Mixer, s/n 472005192, powered by Honda GX240, 8HP gas engine, equipped with ST175/80D13 tires. In very good to excellent condition with excellent tires.

MI-T-M Model HSP-3504-3MGH Portable Steam Cleaner, s/n 15026292, powered by Honda GX390, 13HP gas engine, equipped with 3.3GPM, 200° max water temperature, kerosene fired burner, hose, wand, and rated @ 3500 PSI. In good condition. 425 Gallon Poly Water Tank with stand • **WACKER WP1550 Gas Powered Plate Compactor** • **DYNAPAC LT6000 Foot Compactor**, Honda 3HP gas engine • **LEICA Piper 100 Pipe Laser** • **DAVID WHITE AEL500 Auto Laser** • **RIDGID GP90135A Portable Air Compressor**, Honda 5.5HP gas engine • **WACKER PD3, 3" Double Diaphragm Pump**, s/n 5365069, Honda 4HP gas engine • **TSURUMI EPT3-80HA, 3" Trash Pump**, Honda 8HP gas engine • Small Quantity 3" Discharge & Suction Hose • Small Quantity 2" Discharge Hose • **CRAFTSMAN 5600 Watt Generator**, Briggs & Stratton 10HP gas engine • **PARTNER K750 Gas Powered Demolition Saw** • **PARTNER K700 Gas Powered Demolition Saw** • **SPEED CUT Gas Powered Demolition Saw** • **LOUISVILLE 12' Fiberglass Step Ladder** • 12' Aluminum Step Ladder • 4'x6' Electric Pallet Lift • (30) Safety Cones • (2) Contractors Kits, including shovels, brooms, rakes, spades, extension cords, roadman flags, etc • (10) Sign Stands • (9 Pallets) Assorted Road Signs • (3) Attenuators • Small Quantity of Chains and Binders • Small Quantity of Breaker Steel