

**CRAWLER CRUSHERS AND SCREEN/STACKERS AND GEN SET**



**'05 Metso Nordberg LT300HP**  
**2005 METSO NORDBERG Model Lokotrack LT300HP Crawler Cone Crusher**, s/n 72775, powered by Cat C15, 530HP diesel engine, equipped with 2005 Metso HP300 Cone Crusher, s/n 30310827, auto adjust, auto lube, Leroy Summer hydraulic generator, (2) hydraulic stabilizers, 46"x9" VGF with hydraulic hopper wings, 45"x21" feed conveyor, 31"x21" un-size conveyor, 47"x33" underbelly front discharge conveyor, metal detector, water system, 20" TBG pads, and 14' crawlers. In very good condition with very good undercarriage. **(967 Hours) (Purchased New)**



**'04 Lippman J30x48**  
**2004 LIPPMAN Model J30x48 Portable Jaw Crusher**, s/n 2004-0541, powered by 2001 Cummins M11/P290, 310HP diesel engine, equipped with Lippman 30x48 Jaw Crusher, s/n 0542, hydraulic adjust, 48"x45" underbelly discharge conveyor (hydraulic folding), main electric disconnect panel box, VGF 5120 feed hopper, mounted on quad axle trailer, equipped with (4) hydraulic stabilizers with gas pony motor, and 11R22.5 tires. In good to very good condition with good tires. **(02,282 Hours) (Purchased New)**



**'05 Terex Finlay 693**  
**2005 TEREX FINLAY Model 693 Supertrak Crawler Screening Plant**, s/n FTA550154, powered by Deutz diesel engine and hydraulic drive, equipped with 5'x14' feed hopper with vibrating grizzly, 48"x40' feed conveyor, 5'x20' 2-deck vibrating screen, (2) 24"x30' hydraulic side wing conveyors, 48"x25' underbelly discharge conveyor, catwalk, (2) hydraulic stabilizers, 20" TBG pads, and 15' crawlers. In good to very good condition with good to very good undercarriage. **(00,871 Hours) (Purchased New)**



**'04 Northstar 36" x 60'**  
**2004 NORTHSTAR Model 3-P-330, 36"x60' Radial Stacker**, s/n Unknown, powered by Worldwide 20HP electric motor and Edison ED425 shaft mounted gear reducer, equipped with 5'x8' feed hopper, Schenck belt scale with digital readout, oscillating wheels, drawbar, swivel plate, 36" deep truss, spill guards, and dual 235/85R16 tires. In good condition.  
**2004 NORTHSTAR 36"x100' Radial Stacker**, s/n NS-36X100-1104, powered by Worldwide 20HP electric motor and (2) Edison ED515 shaft mounted gear reducers, equipped with 4'6"x5'6" feed hopper, Schenck belt scale with digital readout, oscillating wheels, swivel plate, 36" deep truss, spill guards, and 11.00x20 tires. In good condition with good tires.



**2004 BROADCROWN Model ACBCJD200S, 190KW Skid Mounted Gen Set**, s/n EXP27943, powered by John Deere 6068HF258 diesel engine, equipped with 238 KVA, 480 volts, 625 amps, 3-phase, and 1800 RPM. In very good condition. **(02,451 Hours) (Purchased New)**  
**Assorted Crushing & Screening Parts & Components:** (3 Sets) Jaw Plates for Lippman Crusher (1 set Unused) • Unused Toggle-Plate for Lippman Crusher • Bearings • Rollers • Screens • Power Cords  
**'04 Broadcrown 190KW**

**RUBBER TIRED LOADERS**



**'98 Cat 950G**

**1998 CATERPILLAR Model 950G Rubber Tired Loader**, s/n 2JS00475, powered by Cat 3126DITA diesel engine and powershift/auto shift transmission, equipped with command steering, supplemental steering, general purpose loader bucket with bolt-on cutting edge, BM hydraulic quick disconnect and 3rd valve, ride control, enclosed ROPS cab with heat, air conditioning, and light package, and 23.5R25 tires. In good condition. **(New Tires) (Purchased New)**



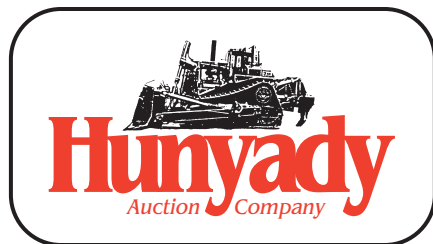
**'86 Cat 936**

**1985 CATERPILLAR Model 950B Rubber Tired Loader**, s/n 22201861, powered by Cat 3304 diesel engine and powershift transmission, equipped with general purpose loader bucket with bolt-on cutting edge, Balderson hydraulic quick disconnect, 3rd valve, 60" fork attachment, hydraulic side dump bucket, enclosed ROPS over cab with heat, light package, and 20.5R25 tires. In good condition with very good front and fair rear tires.



**'85 Cat 950B**

**1986 CATERPILLAR Model 936 Rubber Tired Loader**, s/n 33202384, powered by Cat diesel engine and powershift transmission, equipped with Hewitt general purpose loader bucket, Balderson hydraulic quick disconnect, auxiliary hydraulics, enclosed ROPS cab with light package, and 20.5R25 tires. In good condition with good tires. **(Purchased New)**



**1440 Cowpath Rd. • Hatfield, PA 19440 • 800-233-6898 • Fax: 215-361-9212**

**NOTICE:** In order to update their fleet, R&R Construction Co., Inc. (R&R) has decided to sell equipment that is surplus to their present needs. Established in 1960 R&R has been in business for (48) years and will continue to offer the very best Utility Construction Services and Site Development. Additionally, Harrington Construction Co., a neighboring contractor, has also consigned a few items to the auction. All items will sell to the highest bidder regardless of price!

**AUCTIONEER'S NOTE:** The majority of the equipment was purchased new and has been well maintained by R&R Construction Co. Maintenance records will be available on all equipment.

**LOCATION:** The auction will be held at R&R's yard facility at 105-B Parker Road, Chester, New Jersey 07930.

**TERMS:** Payment in full is required on sale day by cash, certified funds, or check with a bank letter of guarantee. Sample letter of guarantee: "We hereby guarantee the payment of our customer \_\_\_\_\_ written on his account up to \$\_\_\_\_\_ dollars for purchases at your auction sale on April 9, 2008." All guaranteed checks should be made payable to Hunyady Auction Co. Never A Buyer's Premium!

**FINANCING:** Financing is available; please contact Susan at Hunyady Auction Company for complete details.

**SALES TAX:** Since this contractor is selling items not normally sold in the course of his business, the State of New Jersey considers this an isolated sale and does not require the auction company to collect sales tax.

**INSPECTION:** Items will be available for inspection one week prior to the auction from 8:00 a.m. until 5:00 p.m., with the exception of Saturday and Sunday, April 5th and 6th at which time the site will be closed. Items may also be inspected sale day morning from 7:00 a.m until 9:00 a.m.

**REMOVAL:** After complete payment, all sale items may be removed on sale day as long as the removal activity is not disruptive to the sale and only until 5:00 p.m. Items may also be removed Thursday, April 10, Friday, April 11, and Monday, April 14 thru Wednesday, April 16, 2008 from 8:00 a.m. until 5:00 p.m. All items must be removed no later than Wednesday, April 16, 2008 at 5:00 p.m.

**SALE SITE DIRECTIONS: From Interstate 80:** Take Exit 27A and proceed to US Route 206 South (towards Somerville). Once on Route 206 South, proceed (7.7) miles to traffic light at West Main Street/Route 513 and turn right. Proceed on Route 513 South approx. (1.3) miles (watch for signs to Hacklebarney State Park) and turn left. Immediately turn right onto Parker Road and proceed (1.2) miles to sale site on left.

**From Interstate 78:** Take Interstate 287 North towards Morristown and proceed to Exit 22B, following signs for Route 206 North. Proceed on Route 206 North approx. (10) miles and turn left at traffic light onto West Main Street/Route 513. Take Route 513 South approx. (1.3) miles (watch for signs to Hacklebarney State Park) and turn left. Immediately turn right onto Parker Road and proceed (1.2) miles to sale site on left.

**AIRPORT INFORMATION:** The area is serviced commercially through Newark Liberty International Airport and Lehigh Valley International Airport, as well as privately through Morristown Municipal Airport. Rental cars are available at all locations.

**MOTEL INFORMATION:** All hotels are located off of I-80. Quality Inn (973) 347-5100 • Comfort Inn (973) 448-7500 • Residence Inn Marriott (973) 691-1720 • Wyndham Garden Hotel (973) 448-1100

**PA AUCTION LICENSE NO:** AY000281

**SALE SITE PHONE NUMBER: (908) 879-2326 • SALE SITE FAX NUMBER: (908) 879-4569**

**EQUIPMENT ATTACHMENTS AND TRUCK PARTS**

66", 54", (2) 42", (2) 36", (2) 32" and 24" Digging Buckets (Fit Miscellaneous Excavators) • 24" Digging Bucket (JD 510) • GRADALL 35" Digging Bucket • Side Dump Bucket (Cat 950) (No Bracket, Cylinder Or Hydraulic Hoses) • Hydraulic Side Dump Bucket (Loader) • ROCKLAND 48" Fork Attachment (Loader) • 48" Fork Attachment with block forks • 6' 2-Gang Disc Harrow (3-Point Hitch) • 9' 5th Wheel Utility Body • 30" Sleeper • 16" Steel Dump Body • ALLISON Automatic Transmission • ROCKWELL 58,000# Rear • AUTOCRANE Service Crane  
**SHOP AND CONTRACTORS EQUIPMENT**

**KEMPSMITH No. 2 Milling Machine**, with Bridgeport milling head, s/n 20587, with 36" bed • **SCHERR Tumico Optical Comparator** • 20 Ton Dual Post Truck Lift • **HOBART Skid Mounted Gas Powered Welder** • **INGERSOLL-RAND BXR-200 Diesel Powered Plate Compactor** with reverse • (12) Shopmade Overhang Bridge Brackets



**ABSOLUTE AUCTION**  
**SURPLUS EQUIPMENT**  
**Wednesday, April 9, 2008 - 9:00 AM**



**'05 METSO NORDBERG LT300HP**

**R&R CONSTRUCTION CO., INC.**  
**Chester, New Jersey (Morristown Area)**



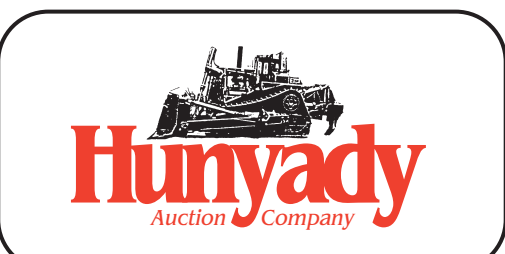
**'98 CAT D5C LGP III & '98 JD 450G LGP IV**



**'05 TEREX FINLAY 693**



**'04 LIPPMAN J30X48**



1440 COWPATH RD. • HATFIELD, PA 19440  
 215/361-9099 • Fax: 215/361-9212



PRE-SORTED  
 FIRST CLASS MAIL  
 US POSTAGE  
**PAID**  
 HAVERTOWN, PA  
 PERMIT #45

HYDRAULIC EXCAVATORS



**'98 Cat 325BL**  
**1998 CATERPILLAR Model 325BL Hydraulic Excavator**, s/n 2JR01818, powered by Cat 3116 diesel engine and hydraulic drive, equipped with 10'6" dipper stick, Balderson 48" digging bucket, manual quick disconnect, enclosed cab with heat, air conditioning, and light package, 31.5" TBG pads, and 15'3" crawlers. In good condition with good undercarriage. **(Purchased New)**

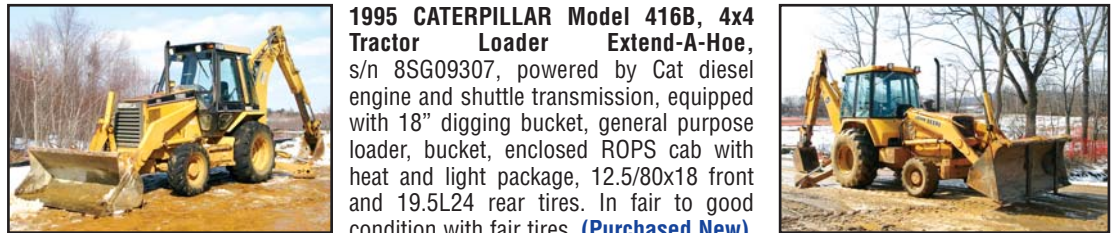
**'97 Cat 312B**  
**1997 CATERPILLAR Model 312B Hydraulic Excavator**, s/n 9HR02587, powered by Cat 3064T diesel engine and hydraulic drive, equipped with 8'6" dipper stick, 24" digging bucket, air conditioning, 11'6" crawlers, and 20" TBG pads. In good condition with good undercarriage. **(Purchased New)**

**'98 Hitachi EX110-5**  
**1998 JOHN DEERE Model 190E Hydraulic Excavator**, s/n 011067, powered by John Deere 4 cylinder diesel engine and hydraulic drive, equipped with 7' dipper stick, Wain Roy 24" digging bucket, Wain Roy manual quick disconnect, backfill blade, auxiliary hydraulics, 8'10" crawlers, and 24" TBG pads. In good condition with good undercarriage. **(Purchased New)**

**'95 JD 190E**  
**1995 JOHN DEERE Model 190E Hydraulic Excavator**, s/n 011067, powered by John Deere 4 cylinder diesel engine and hydraulic drive, equipped with 7' dipper stick, Wain Roy 24" digging bucket, Wain Roy manual quick disconnect, backfill blade, auxiliary hydraulics, 8'10" crawlers, and 24" TBG pads. In good condition with good undercarriage. **(Purchased New)**

**'93 Cat E120B**  
**1993 CATERPILLAR Model E120B Hydraulic Excavator**, s/n 6JF01184, powered by Cat 3114T diesel engine and hydraulic drive, equipped with 10' dipper stick, hydraulic plumbing, enclosed ROPS cab with heat and light package, 23.5" TBG pads, and 11'6" crawlers. In good condition with fair to good undercarriage. **(Purchased New)**

TRACTOR LOADER BACKHOES



**'95 Cat 416B 4x4**  
**1995 CATERPILLAR Model 416B, 4x4 Tractor Loader Extend-A-Hoe**, s/n 8SG09307, powered by Cat diesel engine and shuttle transmission, equipped with 18" digging bucket, general purpose loader, bucket, enclosed ROPS cab with heat and light package, 12.5/80x18 front and 19.5L24 rear tires. In fair to good condition with fair tires. **(Purchased New)**

**'89 JD 510C 4x4**  
**1989 JOHN DEERE Model 510C, 4x4 Tractor Loader Extend-A-Hoe**, s/n 759829, powered by John Deere diesel engine and shuttle transmission, equipped with 22" digging bucket, general purpose loader bucket with bolt-on cutting edge, 40" flip-down bucket forks, Wain Roy manual quick disconnect, enclosed ROPS cab with heat and light package, 12x16.5 front and 21L24 rear tires. In good condition with fair to good tires.



**'1988 JOHN DEERE Model 410C, 4x4 Tractor Loader Extend-A-Hoe**, s/n 749219, powered by John Deere 4 cylinder diesel engine and shuttle transmission, equipped with hydraulic 4-in-1 loader bucket, 24" digging bucket, enclosed ROPS cab with light package, and 12x16.5 front and 19.5x24 rear tires. In fair to good condition with fair tires.

**'1988 JOHN DEERE Model 310C, 4x4 Tractor Loader Backhoe**, s/n 749309, powered by John Deere diesel engine and shuttle transmission, equipped with general purpose loader bucket, 24" digging bucket, Wain Roy manual quick disconnect, enclosed ROPS cab with light package, 12x16.5 front and 19.5Lx24 rear tires. In good condition with good tires. **(Purchased New)**

(2) JD 310C & JD 410C

**'1988 JOHN DEERE Model 310C Tractor Loader Backhoe**, s/n 747955, powered by John Deere diesel engine and shuttle transmission, equipped with general purpose loader bucket, 24" digging bucket, Wain Roy manual quick disconnect, enclosed ROPS cab with light package, 11Lx16 front and 19.5x24 rear tires. In good condition with fair tires.

**'1986 FORD Model 655A Tractor Loader Backhoe**, s/n C761324, powered by Ford 4 cylinder diesel engine and shuttle transmission, equipped with general purpose loader bucket with bolt-on cutting edge, 24" digging bucket, enclosed ROPS cab, and 11L-16 front and 16.9-23 rear tires. In good condition with fair to good tires. (Harrington)

CRAWLER TRACTORS AND LOADER



**'98 Cat D5C LGP III**  
**1998 CATERPILLAR Model D5C LGP Series III Hystat Crawler Tractor**, s/n 6CS00370, powered by Cat 3046 diesel engine and hydrostatic transmission, equipped with 6-way straight blade, tow hitch, ROPS canopy with light package, and 26" SBG pads. In good condition with good undercarriage. **(Purchased New)**

**'98 JD 450G LGP IV**  
**1998 JOHN DEERE Model 450G LGP Series IV Crawler Tractor**, s/n 840829, powered by John Deere diesel engine and powershift transmission, equipped with 6-way straight blade, tow hitch, ROPS canopy with light package, tow hitch, and 24" SBG pads. In good condition with good undercarriage.

**Cat D6D**  
**CATERPILLAR Model D6D Crawler Tractor**, s/n 4X4413, powered by Cat 3306 diesel engine and powershift transmission, equipped with straight blade with tilt, Cat hydraulic winch, s/n 5J1883, ROPS canopy, and 22" SBG pads. In good condition with fair undercarriage. **(Purchased New)**

**'98 Cat 973**  
**1998 CATERPILLAR Model 973 Crawler Loader**, s/n 86G03287, powered by Cat 3306 diesel engine and hydrostatic transmission, equipped with general purpose loader bucket with teeth, enclosed ROPS cab with heat, air conditioning, and light package, and 27" DBG pads. In good condition with good undercarriage. **(06,810 Hours) (Purchased New)**

ROLLERS, PULVERIZER AND COMPACTORS



**'91 Cat CB-434**  
**1991 CATERPILLAR Model CB-434 Tandem Vibratory Roller**, s/n 3TF00138, powered by Cat 3114 diesel engine and hydrostatic transmission, equipped with 55" smooth drums, drum cleaners, and water spray system. In good condition. **(Purchased New)**

**'05 IR DD-10S**  
**2005 INGERSOLL-RAND Model DD-10S Tandem Roller**, s/n 010155, powered by Honda 20HP gas engine and hydrostatic transmission, equipped with 38" rear and 30" split front smooth drums, drum cleaners, water system, and ROPS post. In very good condition. **(0,022 Hours)**

**'98 IRT Impactor 2000**  
**1998 IMPACT ROLLER TECHNOLOGY Model Impactor 2000 Hydraulic Pulverizer/Ground Conditioner**, s/n KG99R0658, equipped with 50" impactor, rear ripper bar, and 315/80R22.5 tires. In good condition. **(Purchased New)**

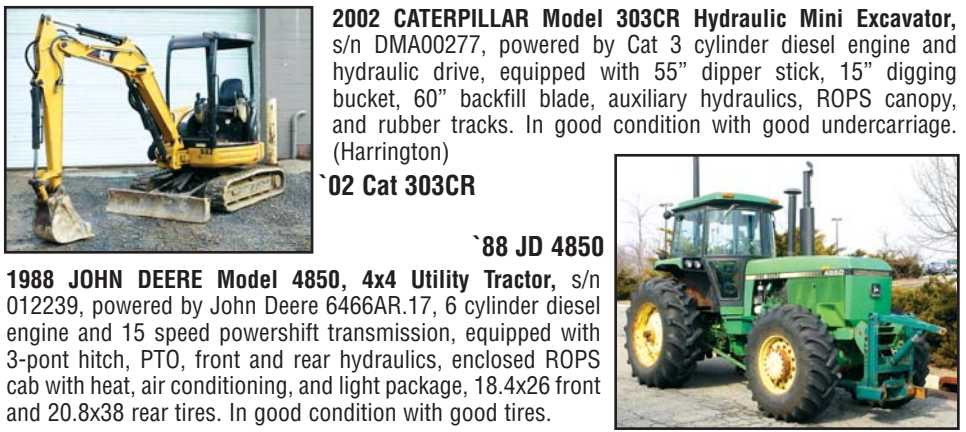
**Bomag BW172D**  
**BOMAG Model BW172D Vibratory Compactor**, s/n 520116825, powered by Deutz 4 cylinder diesel engine and hydrostatic transmission, equipped with 66" smooth drum, ROPS canopy, and 11.2x24 tires. In good condition with good tires. **(1,895 Hours)**

**'01 Ampac P33-24**  
**2001 AMPAC Model P33/24 Trench Compactor**, s/n LP-12-IP33072701, powered by Lister 2 cylinder diesel engine and hydrostatic transmission, equipped with 33" padfoot split drums. In good condition with fair drums. **(Purchased New)**

**'1997 AMERAMAX Model 33L2IR Vibratory Trench Compactor**, s/n 33070970, powered by Lister Petter 2 cylinder diesel engine and hydrostatic transmission, equipped with 33" split padfoot drums. In good condition. **(Purchased New)**

**2002 RAMMAX/MULTIQUIP Trench Compactor**, s/n 1533407 (Harrington)

MINI EXCAVATOR AND UTILITY TRACTORS



**'02 Cat 303CR**  
**2002 CATERPILLAR Model 303CR Hydraulic Mini Excavator**, s/n DMA00277, powered by Cat 3 cylinder diesel engine and hydraulic drive, equipped with 55" dipper stick, 15" digging bucket, 60" backfill blade, auxiliary hydraulics, ROPS canopy, and rubber tracks. In good condition with good undercarriage. (Harrington)

**'88 JD 4850**  
**1988 JOHN DEERE Model 4850, 4x4 Utility Tractor**, s/n 012239, powered by John Deere 6466AR.17, 6 cylinder diesel engine and 15 speed powershift transmission, equipped with 3-pont hitch, PTO, front and rear hydraulics, enclosed ROPS cab with heat, air conditioning, and light package, 18.4x26 front and 20.8x38 rear tires. In good condition with good tires.



**2001 KUBOTA Model L35, 4x4 Tractor Loader Backhoe**, s/n 72090, powered by Kubota 3 cylinder 35HP diesel engine and 8 speed shuttle transmission, equipped with T720 loader attachment with 67" general purpose loader bucket with bolt-on cutting edge, manual quick disconnect, BT900 backhoe attachment with 12" digging bucket, 3-point hitch, PTO, ROPS canopy with light package, 27x10.50-15 front and 15x19.5 rear tires. In good condition with good tires. **(0,543 Hours) (Purchased New)**

**'01 Kubota L35**  
**'01 Kubota L35**, s/n 72090, powered by Kubota 3 cylinder 35HP diesel engine and 8 speed shuttle transmission, equipped with T720 loader attachment with 67" general purpose loader bucket with bolt-on cutting edge, manual quick disconnect, BT900 backhoe attachment with 12" digging bucket, 3-point hitch, PTO, ROPS canopy with light package, 27x10.50-15 front and 15x19.5 rear tires. In good condition with good tires. **(0,543 Hours) (Purchased New)**

PAVERS AND SEALCOAT MACHINE



**'2004 Leeboy Model L8500T**  
**2004 LEEBOY Model L8500T Crawler Paver**, s/n 42800HD, powered by Hatz 4 cylinder diesel engine and hydrostatic transmission, equipped with Legend 8'-15" propane heated vibratory screed. In good condition with good undercarriage. **(1,424 Hours) (Purchased New)**

**'2003 SealMaster**  
**2003 SEALMASTER Portable Sealcoat Machine**, s/n 1S9A5182830420330, equipped with 550 gallon tank, air compressor, powered by Honda 13HP gas engine, pneumatic diaphragm pump, mounted on tandem axle trailer, equipped with 10,000# GVWR, electric brakes, and 215/85R16 tires. In good to very good condition with good tires. (Harrington)

FORKLIFT, AIR COMPRESSORS, AND PORTABLE CHIPPER



**'1985 CASE Model 586D, 6,000# Rough Terrain Forklift**, s/n 17019251, powered by Case 4 cylinder diesel engine and shuttle transmission, equipped with 21' 3-stage mast, 46" forks, side shift, ROPS canopy, and 19.5Lx24 front and 11Lx16 rear tires. In good condition with fair to good tires.

**'96 Sullivan 185CFM**  
**1996 SULLIVAN Model D185QV, 185CFM Portable Air Compressor**, s/n D277561, powered by John Deere 4 cylinder diesel engine, equipped with 215/75R15 tires. In good condition with good tires.

**'87 Morbark 290**  
**1985 INGERSOLL-RAND Model P-185C-W-JD, 185 CFM Portable Air Compressor**, s/n 151783U85957, powered by John Deere 4 cylinder diesel engine, equipped with 205/75R15 tires. In good condition with good tires.

**'85 Case 586D 6,000#**  
**1985 INGERSOLL-RAND Model P100WD, 100 CFM Skid Mounted Air Compressor**, s/n 251526UKF198, powered by Deutz 3 cylinder diesel engine. In good condition.

**'1987 MORBARK Model 290 Portable Chipper**, s/n 3N58671253432, powered by Cummins 4B 3.9 diesel engine and Twin Disc clutch, equipped with manual rotating discharge chute and 7.00x15 tires. In good condition with fair to good tires.

DUMP, VAN BODY, AND PLOW SPREADER TRUCKS

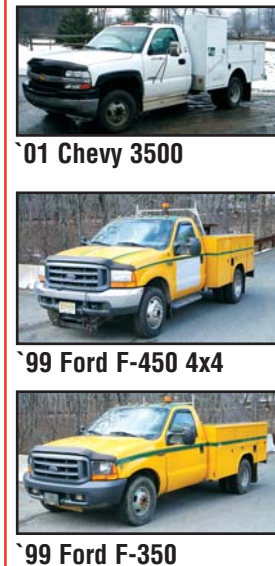


**'1998 MACK Model RD600GK (Glider Kit) Single Axle Dump Truck**, powered by Mack E6-350, 350HP diesel engine and Maxitorque 9 speed transmission, equipped with 10' steel dump body with manual tarp and (2) chutes, Jacobs 2-position engine brake, air gate, tow package with air and hydraulics, and 11R24.5 tires. In good condition with fair to good tires. (1998 Glider Kit - 1985 On The Original Components)

**'03 Ford E550**  
**2003 FORD Model E550 Super Duty Van Body Truck**, powered by Powerstroke diesel engine and automatic transmission, equipped with Aerocell 20' fiberglass van body, rear roll-up door, pull out ramp, 11,500# rear axles, 6,000# front axle, air conditioning, cruise control, and 225/70R19.5 tires. In good condition with good to very good tires.

**'1986 FORD Model F-700 Single Axle Plow/Spreader Truck**, powered by Detroit 8.3L diesel engine and automatic transmission, equipped with 10' steel dump body, 10' hydraulic driven spreader body, snow plow, central hydraulics, Stedt model 300, 3-section telescopic boom, s/n 3391, with hydraulic clam shell, and 11R22.5 tires. In fair to good condition with fair tires. (Boom Removed) (Harrington)

UTILITY TRUCKS, PICKUPS AND VAN



**'2001 CHEVROLET Model 3500 Silverado Utility Truck**, powered by Vortec 8100, V-8 gas engine and automatic transmission, equipped with Stahl 9' utility bed, dual rear wheels, air conditioning, and 215/85R16 tires. In good condition with fair tires. **(Purchased New)**

**'1999 FORD Model F-450 Super Duty 4x4 Utility Truck**, powered by Powerstroke diesel engine and automatic transmission, equipped with Reading Classic 9' utility body, dual rear tires, air conditioning, and 225/170R19.5 tires. In good condition with good tires.

**'1999 FORD Model F-350 Super Duty Utility Truck**, powered by Powerstroke diesel engine and automatic transmission, equipped with Reading 9' utility body, dual rear wheels, ladder rack, air conditioning, AM/FM stereo, and 235/85R16 tires. In good condition with good tires. **(Purchased New)**

**'1990 FORD Model F Super Duty Utility Truck**, powered by V-8 gas engine and 5 speed transmission, equipped with 9' utility body, electric lift gate, material rack, dual rear wheels, and 235/85R16 tires. In fair condition with fair tires. (Harrington)

**'1989 FORD Model F Super Duty Utility Truck**, powered by International 7.3L diesel engine and automatic transmission, equipped with 9' enclosed utility body, dual fuel tanks, dual rear wheels, and 235/85R16 tires. In fair condition with good tires. (Harrington)

**'1995 FORD Model F-250XLT, 4x4 Pickup Truck**, powered by 5.8L, V-8 gas engine and automatic transmission, equipped with Western 8' unimount snowplow with work lights, 8' bed, 110 gallon fuel tank, cross toolbox, side toolboxes, material rack, dual fuel tanks, and 235/85R16 tires. In fair to good condition with fair to good tires. (Harrington)

**'1994 FORD Model Ranger XLT Pickup Truck**, powered by 3.0L, 4 cylinder gas engine and automatic transmission, equipped with 8' bed, cross toolbox, air conditioning, and 235/75R15 tires. In fair condition with good tires. (Harrington)

**'1988 FORD Model E-250 Window Van**, powered by V-8 gas engine and automatic transmission, equipped with material rack and bins and 235/85R16 tires. In fair condition with good tires. (Harrington)

LOWBOY AND TAG-A-LONG TRAILERS



**'1999 Trailking Model TK110HDG-523, 55 Ton Tri-Axle Lowboy Trailer**, equipped with non ground bearing detachable gooseneck, 8'6"x24' level deck, 11'6" deck over wheels, air ride suspension, 133,500# GVWR, 24,020# GAWR, outriggers, chain dogs, and 275/70R22.5 tires. In good condition with good tires. **(Purchased New)**

**'2002 EAGER BEAVER Model 20XPT, 20 Ton Tandem Axle Tag-A-Long Trailer**, equipped with 8'6"x19' level deck, 6' beavertail, 6" ramps, air brakes, 48,380# GVWR, chain dogs, and 215/75R17.5 tires. In good condition with good tires. **(Purchased New)**

**'1990 EAGER BEAVER Tandem Axle Tag-A-Long Trailer**, equipped with 6'x12' level deck, 3' beavertail, 42" ramps, electric brakes, 12,200# GVWR, and 8x14.5 tires. In good condition with good tires.

**Shopmade 5'x10' Single Axle Tilt Deck Tag-A-Long Trailer**. In fair condition.