

CRAWLER SCREENING PLANT, CRAWLER CRUSHING PLANT, AND TROMMEL SCREEN



'01 PEGSON 428 TRAKPACTOR



'06 FINTEC 542

2006 FINTEC Model 542 Crawler Screening Plant, s/n 2006-542-764, Cat 3054C diesel and hydraulic drive, 5'x12' 2-deck vibratory screen; 6'x14' feed hopper with hydraulic tipping grizzly; 42" screen feed conveyor; 48" x 19" front discharge conveyor with Belt-Way model 200 scale; (2) 24" x 30" foldaway side discharge conveyors; hydraulic screen and conveyor raise; folding screen box walkway; hydraulic stabilizers; 11" x 11" crawlers; and 20" TGB pads. In very good condition with very good undercarriage. (1,414 Hours)

2001 BL-PEGSON Model 428 Trakpactor Crawler Impact Crusher, s/n QM015081S, Cat 3306 diesel with PTO and hydraulic drive, 428 impact crusher, s/n QM015047; 4'x12' vibratory plate/grizzly feeder; Eriez 30" belt magnet; 40" x 30" discharge conveyor; Belt-Way digital belt scale; 846 Trakpactor crawler carrier; 13'1" crawlers; 16" TGB pads; and wired remote control. In good condition with good undercarriage.

REMU Model MSK2-150-US Trommel Screen, s/n 058, John Deere diesel engine, 10'8"x5'8" charging hopper with hydraulic grizzly on 12" centers, 40" variable speed feed conveyor, 8'x6" trommel with 4'6" screen area, brush cleaners, side discharge conveyor, 5th wheel, single axle carrier, and 385/65R22.5 tires. In good condition with good tires.

FELLER BUNCHER



'93 HYDRO-AX 621E

1993 HYDRO-AX Model 621E Brush Mower, s/n 4248, Cummins 6BTA5.9 diesel and hydrostatic trans, Hydro-Ax 8' rotary ax brush cutter, s/n A621E519, hydraulic quick coupler, auxiliary hydraulics, rear mounted winch with 20,000# maximum line pull, EROPS with sweeps and forestry package, air conditioning, light package, and 28L-26 foam filled tires. In good condition with good tires. (New Radiator Within 50 Hours) (250 Hours On Mower Rebuild & Balancing - Spindle, Bearings, Blade Carrier and Blades)

HYDRO-AX Model 20FB, 20" Shear-Type Feller Buncher, s/n 3324



HYDRO-AX 20FB

BELTED AG TRACTOR & ATTACHMENTS



'96 CAT CHALLENGER 55

1996 CATERPILLAR Model Challenger 55 Belted Ag Tractor, s/n 7DM00270, Cat 3126 diesel and powershift trans, 4-port hydraulics, rear PTO, enclosed cab with heat and air conditioning, 11'3" crawlers, and 26" pads. In good condition with good undercarriage.

2007 SWEEPSTER Model RHFAM8, 8' Power Broom, s/n 0743006, PTO powered. In excellent condition. (3-Point Hitch Mount)

GLENCOE Soil Saver Disc/Chisel Cultivator Attachment, s/n 79437, with hydraulic transport wheels and tow tongue.

TRUCK TRACTOR AND LOWBOY TRAILER



'02 PETERBILT 379 & '06 TALBERT 55 TON

2002 PETERBILT Model 379 Tandem Axle Truck Tractor, Cat C-15, 490HP diesel and Eaton Fuller 18 speed trans, 3-stage hi/lo pressure wetline kit, 3-stage Jake brake, 110 gallon aluminum fuel tank, aluminum Budd wheels, full aluminum fenders, beacon light with back work lights, air ride suspension, 38,000# rears, 12,000# front axle, air ride seat and cab, air conditioning, CD player, and 11R24.5 tires. In good condition with good tires.

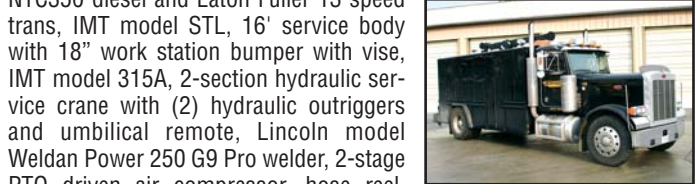
2006 TALBERT Model T4DW-55SA-HRG-RA-1-T1EC3-1, 55 Ton Tri-Axle Lowboy Trailer, non-ground bearing hydraulic detachable gooseneck, 24'6"x8'6" load deck, 14' open over wheels, airlift 3rd axle, 4th axle prepped, air ride suspension, aluminum Budd wheels, outriggers, chain dogs, 131,850# GVWR, 24,700# GAWR, and 275/70R22.5 tires. In excellent condition with excellent tires.

DUMP TRUCK & SERVICE TRUCK

2005 PETERBILT Model 379 Tri-Axle Dump Truck, Cat C-15, 475HP diesel and Eaton Fuller 18 speed trans, J&J 16'6" steel dump body with air gate and power tarp, steerable lift axle, 46,000# rears, 18,000# front axle, 13,500# lift axle, air ride suspension, 3-stage brake, tow package with air, 110 gallon aluminum fuel tank, aluminum Budd wheels, air conditioning, power windows and locks, leather interior, CD player, and 315/80R22.5 front and 11R24.5 rear tires. In good condition with very good tires.

'05 PETERBILT 379

1988 PETERBILT Model 379 Single Axle Service Truck, Cummins NTC350 diesel and Eaton Fuller 13 speed trans, IMT model STL, 16' service body with 18" work station bumper with vise, IMT model 315A, 2-section hydraulic service crane with (2) hydraulic outriggers and umbilical remote, Lincoln model Weldan Power 250 G9 Pro welder, 2-stage PTO driven air compressor, hose reel, 3-stage brake, aluminum disc wheels, power windows, air conditioning, heated mirrors, work lights, tow bar, and 12R24.5 tires. In good to very good condition with good tires.



'88 PETERBILT 379



Please visit our website at www.hunyady.com



1440 Cowpath Rd. • Hatfield, PA 19440 • 800/233-6898 • Fax: 215/361-9212

NOTICE: After (37) successful years in the residential and commercial site development industry, Mr. Martin P. Hill has decided to completely liquidate all asset of Martin Construction, Inc. in order to pursue other business interests. A few items have been added by area contractors and are identified in the descriptions. All equipment will be sold at absolute auction, without minimums or reserves, to the highest bidder regardless of price!

LOCATION: The auction will be held on North Church Street, Lineboro, Maryland, 21088

TERMS: Payment in full is required on sale day by cash, certified funds, or check with a bank letter of guarantee. Sample letter of guarantee: "We hereby guarantee the payment of our customer _____ written on his account up to \$ _____ dollars for purchases at your auction sale on March 27, 2008." All guaranteed checks should be made payable to Hunyady Auction Co. **Never A Buyer's Premium!**

FINANCING: Financing is available, please contact Susan at Hunyady Auction Company for complete details.

SALE TAX: Sales tax will be collected at a rate of 5% on all items, with the exception of motor vehicles. Sales tax on motor vehicles will be due when the vehicle is registered. The state of Maryland will only accept resale and exemption certificates issued by the state of Maryland. Out-of-state purchasers can either apply for a Maryland resale/exemption number prior to the sale or apply for a sales tax refund from the state of Maryland with proof of intended resale.

INSPECTION: Items will be available for inspection beginning Monday March 24, 2008 from 8:00 a.m. until 5:00 p.m. and will continue throughout the week, as well as sale day morning beginning at 7:00 a.m. Should special inspection arrangements be needed, please contact the auction company.

REMOVAL: After complete payment, all sale items may be removed on sale day as long as the removal activity is not disruptive to the sale and only until 5:00 p.m. Items may also be removed Friday, March 28, and Monday, March 31 thru Thursday, April 3, 2008 from 8:00 a.m. until 5:00 p.m. All items must be removed no later than Thursday, April 3, 2008 at 5:00 p.m.

SALE SITE DIRECTIONS: FROM PA AND POINTS NORTH: Interstate 83 South to Exit #8 (Old Exit #2 - Glen Rock). Follow Route 216 West for (10) miles to Route 516 South. Continue (3.0) miles to MD State Line (Route 516 becomes MD Route 86 South). Continue another (0.5) miles and turn right onto North Church Street. Follow (0.5) miles to sale site on left.

FROM MD ROUTE 30 IN MANCHESTER, MD: Follow Route 30 North (1.3) miles. Turn right onto MD Route 86 North (towards Lineboro). Follow (3.3) miles and turn left onto North Church Street. Continue (0.5) miles to sale site on left.

AIRPORT INFORMATION: The area is serviced commercially through Baltimore/Washington International Airport or Harrisburg International Airport. Rental cars are available at both locations. Private aircraft can be accepted at the Carroll County Regional Airport (410) 876-7200

MOTEL INFORMATION: Days Inn of Westminster (410) 857-0500 • Best Western Westminster (410) 857-1900

PA AUCTION LICENSE NO: AY000281

SALE SITE PHONE:
(410) 374-9118
(BEGINNING MARCH 17th)

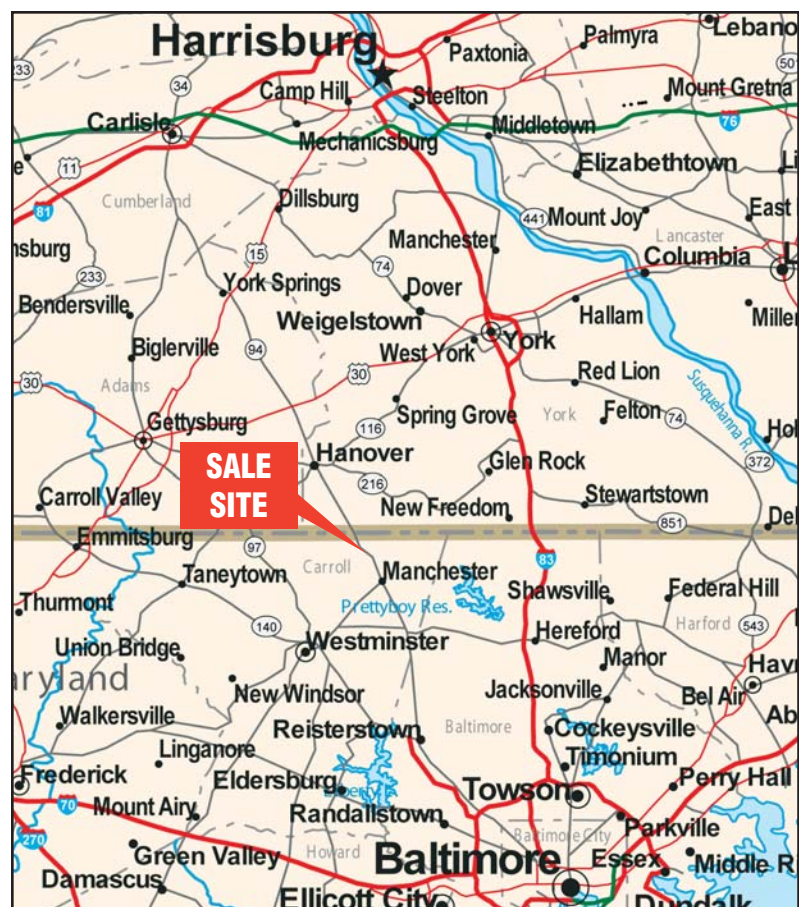
SALE SITE FAX:
(410) 374-2479

SHOP COMPRESSORS, WELDERS, & PRESSURE WASHER

INGERSOLL RAND Horizontal Shop Air Compressor, single/3-phse, 5HP. In very good condition • **DAYTON SPEEDAIRE** Horizontal Shop Air Compressor, s/n not available, 5HP single phase electric motor, good condition • **AIRCO** Aircomatic Miget 200 Amp Portable Wire Feed Welder, s/n not available, gun, good condition • **AALADIN** 14-423SL Portable Pressure Washer, s/n 78021, rated at 2300 psi/4 GPM, 84,000 BTU, hose and gun, good condition

SHOP TOOLS

SNAP-ON WB260A Wheel Balancing Machine • 4,000# Hydraulic Hoist • Trans Jack • 10 Ton Hydraulic Floor Jack • Hydraulic Floor Jack • Hydraulic Bottle Jacks • Heavy and Light Duty Jack Stands • **ZEP** Dyna-Clean Parts Washer • **CORNWELL** 12/24V Batter Charger • Pneumatic and Manual Lubers • (2) **VIDMAR** Cabinets, Bolt Bins, and Parts Bins • Oxygen/Acetylene Torch Sets • **CHICAGO-PNEUMATIC** 3/4" and 1/2" Pneumatic Impact Wrenches • ATD 3/4" and 1/2" Socket Sets • 1/2" Torque Wrench • **CHICAGO-PNEUMATIC** Pneumatic Angle Grinder • Dual Wheel Pedestal Grinder • Steel Shop Table, with vise



ABSOLUTE AUCTION
COMPLETE LIQUIDATION
MARTIN CONSTRUCTION, INC.
THURSDAY, MARCH 27, 2008 - 9 A.M.



Lineboro, Maryland
(Manchester, MD Area)
(35 Miles NW of Baltimore)



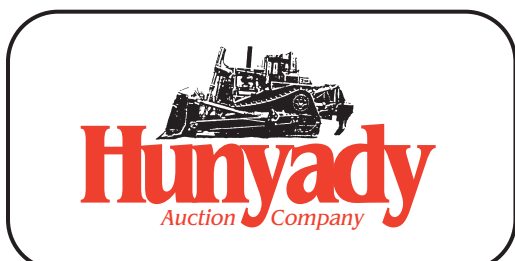
'03 JD 650H LGP AND '02 JD 450H LT



'07 BOBCAT T250 AND '06 BOBCAT 331G



'01 PEGSON 428 TRAKPACTOR



1440 COWPATH RD. • HATFIELD, PA 19440
215/361-9099 • Fax: 215/361-9212

PRE-SORTED
FIRST CLASS MAIL
US POSTAGE
PAID
HAVERTOWN, PA
PERMIT #45



HYDRAULIC AND RUBBER TIRED EXCAVATORS AND ATTACHMENTS



'97 CAT 322BL

1997 CATERPILLAR Model 322BL Hydraulic Excavator, s/n 1YS00364, Cat 3116 diesel and hydraulic drive, 9'9" dipper stick with hydraulic beyond, 42" digging bucket, 15'2" crawlers, 32" TBG pads, enclosed cab, air conditioning, and light package. In good condition with good undercarriage.

1998 JOHN DEERE Model 270LC Hydraulic Excavator, s/n FF0270X070172, John Deere PowerTech 6.8L diesel and hydraulic drive, 12'4" dipper stick, CP 42" bucket, enclosed cab with heat and air conditioning, 16" crawlers, and 31.5" TBG pads. In good condition with good undercarriage.

2006 BOBCAT Model 331G Mini Excavator, s/n 234316048, Kubota diesel and hydraulic drive, 4' dipper stick with hydraulic beyond, Bobcat quick disconnect swivel attachment, 14" digging bucket, 5' backfill blade, enclosed cab with heat and air conditioning, and 13" rubber tracks. In excellent condition with very good undercarriage. **(386 Hours) (Purchased Unused 7/07 - Transferable Mfg Warranty Remaining - Call For Details)**

1994 SAMSUNG Model SE210W Rubber Tired Excavator, s/n GAY0669, Cummins 6BT3.9-C diesel and hydrostatic trans, 9'4" dipper stick, 46" bucket, Wain Roy Wrist-O-Twist quick coupler, enclosed cab with heat, and 10.00-20 tires. In good condition with good tires.

ATTACHMENTS: 2003 NPK Model E208 Hydraulic Demo Hammer, s/n 72473. In very good condition. (Fits Samsung) • CAT 315 Topper for NPK • 30" Compaction Wheel (Fits Cat 320) • 5-Tine Grapple (Fits Cat 322) • Concrete Pulverizer Jaw (Fits Cat 322) • (2 Sets) UNUSED Drive Bucket Pins for Cat 330 and 322 • 56" Digging Bucket (Fits Cat 322) • CP 42" Digging Bucket (Fits JD 270) • 40" Perforated Clean-Up Bucket (Fits Bobcat) • UNUSED 30" Digging Bucket (Fits Bobcat) • 24" Digging Bucket (Fits Bobcat)



'98 JD 270LC



'06 BOBCAT 331G



'94 SAMSUNG SE210W



'03 NPK E208

TRACTOR LOADER BACKHOES AND ATTACHMENTS



'05 CAT 420D 4X4 EXTEND-A-HOE

2005 CATERPILLAR Model 420D, 4x4 Tractor Loader Extend-A-Hoe, s/n FDP22484, Cat 3054T diesel and shuttle trans, GP bucket, 18" digging bucket with Wain Roy wrist-o-twist attachment, EROPS, air conditioning, light package, and 12.5/80x18 front and 19.5x24 rear tires. In good to very good condition with good to very good tires. **(1,521 Hours)**

1994 CATERPILLAR Model 416B, 4x4 Tractor Loader Extend-A-Hoe, s/n 8ZK01878, Cat 3054-DIT diesel and shuttle trans, Balderson quick coupler, front auxiliary hydraulics, GP bucket, and EROPS. In good condition with fair tires. (WBA)

OKADA Hydraulic Demolition Hammer (Wain Roy Coupling) • INDECO 32"x23" Vibratory Plate (Wain Roy Coupling) • WAIN ROY Ripper Tooth; 16" and 12" Digging Buckets; 48" Clean-Up Bucket



'94 CAT 416B 4X4 EXTEND-A-HOE

COMPACTORS

1987 INGERSOLL RAND Model SP-48DD Vibratory Roller, s/n 6112-S, Cummins 3.9 diesel and hydrostatic trans, 66" smooth drum, drum drive, and 14.9-24 tires. In good condition with good tires.



'87 IR SP-48

1987 INGERSOLL RAND Model SP-48 Vibratory Compactor, s/n 6057-S, Cummins 3.9L diesel and hydrostatic trans, 66" smooth drum and 14.9x24 tires. In good condition with good tires.



WACKER RT820

WACKER Model RT820 Vibratory Trench Compactor, s/n Unknown, Lombardini diesel and hydrostatic trans, 32" split padfoot drums and remote control. In good condition.

1998 BOMAG Model BW75AD Walk Behind Vibratory Roller, s/n 101480310296, Hatz diesel and hydrostatic trans, 30" smooth drums and water system with front and rear spray. In good condition. (WBA)

STRAW BLOWER, STUMP GRINDER & PORTABLE CONVEYOR

REINCO Model TM7-30 Portable Straw Blower, s/n 2224, Wisconsin 4 cylinder gas engine, 360 degree chute rotation, 20"x12" bale capacity, and 4'6" feed chute, mounted on single axle tagalong trailer with 14' steel deck, (2) stabilizers, and 8-14.5 tires. In good condition with good tires.

DOSKOCIL Walk-Behind Stump Grinder, Honda 13HP engine, with tow tongue.

MITCHELL ELLIS 14"x34'6" Portable Conveyor, 1.5HP electric motor, variable speed/reverse and wagon steer.

CARGO & CONVERSION VANS AND SPORT UTILITY VEHICLES

2002 CHEVROLET Model 3500 Cargo Van, Vortec 5.7L gas and automatic trans, AC Delco 2500 watt power inverter, shelving units and bins, and ladder rack. In good condition with good tires.

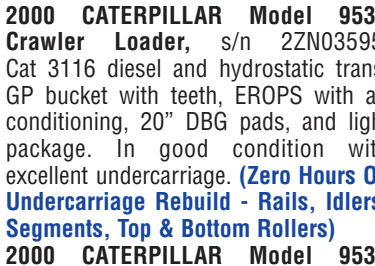
1993 CHEVROLET Model 20 Conversion Van, Chevrolet V-8 gas and automatic trans with overdrive, Winnebago conversion body, leather interior, power windows and locks, air conditioning, TV with VHS/DVD player, middle row captain chairs, back seat fold down to twin bed, elevated roof with storage compartment, and P225/75R15 tires. In good condition with good tires.

2002 CHEVROLET Model Trailblazer LS, 4x4 Sport Utility Vehicle, Vortec 4.2L gas and automatic trans with overdrive, air conditioning, CD player, and P245/70R16 tires. In good condition with good tires.

2000 JEEP Model Cherokee Limited, 4x4 Sport Utility Vehicle, 4.0L gas and automatic trans with overdrive, power package, leather interior, air conditioning, cruise control, CD player, and P225/70R16 tires. In good condition with fair tires.



(1) OF (2) '00 CAT 953C



'00 CAT 953C

2000 CATERPILLAR Model 953C Crawler Loader, s/n 2ZN03595, Cat 3116 diesel and hydrostatic trans, GP bucket with teeth, EROPS with air conditioning, 20" DBG pads, and light package. In good condition with excellent undercarriage. **(Zero Hours On Undercarriage Rebuild - Rails, Idlers, Segments, Top & Bottom Rollers)**

2000 CATERPILLAR Model 953C Crawler Loader, s/n 2ZN03677, Cat 3116 diesel and hydrostatic trans, GP bucket with teeth, EROPS with air conditioning, 20" DBG pads, rock guards, and light package. In good condition with excellent undercarriage. **(Zero Hours On Undercarriage Rebuild - Rails, Idlers, Segments, Top & Bottom Rollers)**

JOHN DEERE Model 855 Crawler Loader, s/n 313322T, John Deere diesel and hydrostatic trans, 2.5 yard GP bucket with teeth, EROPS with heat, 12'9" crawlers, and 18" pads. In good condition with fair to good undercarriage.

RUBBER TIRED LOADERS AND TOOL CARRIERS



'97 JD 744H-MH

1997 JOHN DEERE Model 744H-MH Rubber Tired Loader, s/n 559712, John Deere diesel and powershift trans, 8 cubic yard light material bucket, AFFEX fire suppression system, EROPS with heat and air conditioning, and 26.5R25 tires. In good condition with very good tires.



'97 JD 744H

1997 JOHN DEERE Model 744H Rubber Tired Loader, s/n 560868, John Deere diesel and powershift trans, GP bucket, EROPS with air conditioning, light package, and 26.5-25 tires. In good condition with very good front and good rear tires.



'93 CAT IT28F

1993 CATERPILLAR Model IT28F Rubber Tired Tool Carrier, s/n 4ZD00840, Cat diesel and powershift trans, hydraulic quick coupler, 2 yard GP bucket, EROPS with heat and air conditioning, and 17.5-25 tires. In good condition with good tires.

ATTACHMENTS: BALDERSON 8' Hydraulic Boom, s/n 139425, with power angle (WBA) • 48" Fork Attachment (WBA) • BALDERSON 18" Asphalt Cutter Wheel (WBA) • 48" Fork Attachment (Fits Cat IT18B)

CRAWLER TRACTORS



'03 JD 650H LGP AND '02 JD 450H LT

2002 JOHN DEERE Model 450HLT Crawler Tractor, s/n 906092, John Deere diesel and hydrostatic trans, 6-way straight blade, EROPS with heat and air conditioning, 10'1" crawlers, and 18" SBG pads. In very good condition with very good undercarriage. **(1,810 Hours)**



'02 JD 450H LT

CRAWLER LOADERS

2000 CATERPILLAR Model 953C Crawler Loader, s/n 2ZN03595, Cat 3116 diesel and hydrostatic trans, GP bucket with teeth, EROPS with air conditioning, 20" DBG pads, and light package. In good condition with excellent undercarriage. **(Zero Hours On Undercarriage Rebuild - Rails, Idlers, Segments, Top & Bottom Rollers)**

2000 CATERPILLAR Model 953C Crawler Loader, s/n 2ZN03677, Cat 3116 diesel and hydrostatic trans, GP bucket with teeth, EROPS with air conditioning, 20" DBG pads, rock guards, and light package. In good condition with excellent undercarriage. **(Zero Hours On Undercarriage Rebuild - Rails, Idlers, Segments, Top & Bottom Rollers)**

JOHN DEERE Model 855 Crawler Loader, s/n 313322T, John Deere diesel and hydrostatic trans, 2.5 yard GP bucket with teeth, EROPS with heat, 12'9" crawlers, and 18" pads. In good condition with fair to good undercarriage.

CRAWLER SKID STEER LOADERS AND ATTACHMENTS



2007 BOBCAT Model T-250 Crawler Skid Steer Loader, s/n 531813053, Kubota V-330-T diesel and hydrostatic trans, high-flow hydraulics, 80" GP bucket with teeth, hydraulic power Bob-Tach disconnect, EROPS with heat and air conditioning, molded diamond plate rear protection package, keyless electronic security system, and 18" rubber tracks. In excellent condition with very good undercarriage. **(154 Hours) (Transferable Mfg Warranty Remaining - Call For Details)**

2007 BOBCAT Model T-250 Crawler Skid Steer Loader, s/n 531813249, Kubota V-330-T diesel and hydrostatic trans, 80" GP bucket with teeth, hydraulic power Bob-Tach disconnect, EROPS with heat and air conditioning, molded diamond plate rear protection package, keyless electronic security system, and 18" rubber tracks. In excellent condition with very good undercarriage. **(301 Hours) (Transferable Mfg Warranty Remaining - Call For Details)**



'07 BOBCAT T250 WITH HI-FLOW

2007 BOBCAT 72" Hydraulic Sweeper Attachment, s/n 783718449, with dump hopper. In excellent condition • **BOBCAT 48" Fork Attachment**

STAKE BODY & LANDSCAPE DUMP TRUCKS

2006 FORD Model F-350XL Super Duty, 4x4 Stake Body Dump Truck, Powerstroke 6.0L Turbo diesel and automatic trans with overdrive, Reading 12'6" stake body with electric dump hoist, Reading toolboxes, dual rear wheels, tow package with electric, air conditioning, cruise control, and LT245/75R17 tires. In good to very good condition with good tires.



'06 FORD F-350XL 4X4 STAKE DUMP

1999 FORD Model F-350XL Super Duty Stake Body Truck, Power Stroke 7.3 liter turbo diesel and automatic trans, 12' flatbed with stake sides and under-hung tool boxes, 100 gallon fuel tank with 12 volt pump, tow hitch, air conditioning, AM/FM stereo, and 235/85R16 tires. In good condition with poor tires. (WBA)

1995 FORD Model F-350XL, 4x4 Dump Truck, Powerstroke 7.3L Turbo diesel and automatic trans with overdrive, Omaha 10' dump body with removable sides, passenger side toolbox, Meyer 8' snowplow with touch button controls, dual rear wheels, and LT235/85R16 tires. In good condition with good tires.



'95 FORD F-350XL 4X4 DUMP

PICKUP TRUCKS

2005 CHEVROLET Model 3500 Silverado 4x4 Crew Cab Pickup Truck, Duramax 6.6L turbo diesel and automatic trans, 8' bed with cross and side toolboxes and spray-on bed liner, 50 gallon fuel tank with electric pump, leather interior, air conditioning, tow package with electric, and 265/75R16 tires. In good condition with good tires.



2001 CHEVROLET Model 2500HD, 4x4 Crew Cab Pickup Truck, Vortec V-8 gas and automatic trans with overdrive, 8' bed with Leer cap, aluminum wheels, overhead storage compartments, tow package with electric, air conditioning, CD player, and LT265/75R16 tires. In good condition with very good tires.

'05 CHEVY 3500 4X4

UTILITY AND FLATBED TRUCKS



'03 CHEVY C5500

2003 CHEVROLET Model C5500 Single Axle Crew Cab Utility Truck, Duramax 6.6L diesel and automatic trans, 11' enclosed utility body, 100 gallon fuel tank with electric pump, dual fuel tanks, brake, cruise control, air conditioning, running boards, tow package with electric, and 255/70R19.5 tires. In good to very good condition with good tires.



'03 FORD F-350XL SUPER DUTY

2003 FORD Model F-350XL Super Duty Utility Truck, Triton 5.4L, V-8 gas and automatic trans, Omaha 9' open utility body, Kohler gas powered air compressor, 50 gallon fuel tank with 12 volt pump, tow package with electric, air conditioning, and LT265/75R16 tires. In good condition with good tires.

2003 CHEVROLET Model 2500HD Silverado 4x4 Utility Truck, V-8 gas and automatic trans, 8' utility body, Boss 7'6" hydraulic angle snowplow with manual disconnect and lights, 50 gallon fuel tank with electric pump, leather interior, tow package with electric, air conditioning, and 245/75R16 tires. In good condition with good tires.

2003 CHEVROLET Model 2500HD Silverado 4x4 Utility Truck, V-8 gas and automatic trans, 8' utility body, 50 gallon fuel tank with electric pump, leather interior, tow package with electric, air conditioning, and 245/75R16 tires. In good condition with good tires.

1998 CHEVROLET Model 3500, 4x4 Crew Cab Utility Truck, 6.5L Turbo diesel and automatic trans with overdrive, Omaha 9' open utility body with spray-on bed liner, 100 gallon diesel fuel tank, dual rear wheels, and LT215/85R16 tires. In good condition with good tires.

1996 FORD Model F-250XL, 4x4 Utility Truck, Triton 5.8L gas and automatic trans with overdrive, Reading 9' open utility body with spray-on bed liner, 50 gallon fuel tank, Myer 8' snowplow with touch button control, air conditioning, and LT235/85R16 tires. In good condition with good tires.

1993 CHEVROLET Model 3500, 4x4 Crew Cab Flatbed Truck, 6.5L Turbo diesel and automatic trans with overdrive, 8' flatbed, bed mounted toolboxes, ladder rack, air conditioning, dual rear wheels, and LT235/85R16 tires. In good condition with good tires.

TAG-ALONG & 40' DROP DECK TRAILERS

2000 INTERSTATE Model 40DLA, 20 Ton Tandem Axle Tag-A-Long Trailer, 19'x8'6" level deck, 5' beavertail, 4'6" ramps, 47,600# GVWR, air brakes, tie downs, and 215/75R17.5 tires. In good condition with good tires.

2004 TOWMASTER Model T-12DD, 12,000# Tandem Axle Tag-A-Long Trailer, 18'6"x6'6" level deck, 5'10" ramps, 15,050# GVWR, electric brakes, tie downs, and 235/85R16 tires. In good condition with good tires.

1987 RPM Model TS-M116 Single Axle Tag-A-Long Trailer, 11'x7'5" metal deck with 24" side frames, electric brakes, and 8.75-16.5 tires. In good condition with good tires.

1974 FONTAINE Model DPT-2-5540, 40' Tandem Axle Drop Deck Trailer, 11'6" upper deck, 28'6" level deck, 65,800# GVWR, spring suspension, removable bulkhead, stake pockets, and 10.00R15 tires. In fair to good condition with good tires.

FORKLIFT

CLARK Model EC500-S30, 2,750# Forklift, s/n E235-0075-6705FA, battery powered with hydrostatic trans, 12" 2-stage mast, 32" forks, 16x6x10.5 solid tires, and battery charger. In good condition with good tires.

OFFICE/STORAGE TRAILER AND OVERSEAS CONTAINERS

8'x30' Single Axle Office/Storage Trailer, front office space with heat, air conditioning, and man door, rear storage area with roll-up door, and 7x14.5 tires. In fair to good condition with good tires.

8'x20' Overseas Storage Container. In good condition.

PORTABLE AIR COMPRESSOR, GENERATOR & ARROWBOARD



'03 IR 185CFM

2003 INGERSOLL RAND Model P185-WJD, 185CFM Portable Air Compressor, s/n 333590UKM221, John Deere diesel, (2) hose reels. In good condition with good tires. (WBA)

1995 COLEMAN Model CJ4T-60SQ, 60KW/75KVA Portable Generator, s/n 11952274, John Deere diesel, single/3-phase, 120/240 volt, 208/240 volt, 416/480 volt, and ST205/75R15 tires. In very good condition with good tires.

1993 AMIDA Model DLB15-FA-DL04 Portable Arrow Board, s/n 9311-21658, Lombardini diesel, manual raise/lower, trailer mounted with 205/75D15 tires. In good condition with good tires.

CONTRACTORS EQUIPMENT

(2 Sets) **ULTRA-SHORE** 2484 Aluminum Trench Shields, with 30" spreaders • **LINDSAY 80** Skid Mounted Air Compressor, Kohler gas engine (0,116 hours), good condition • **BUYERS** Electric Tailgate Salt Spreader • (2) **WACKER** WP1550AW Vibratory Plate Compactors, with water system • (2) **WACKER** BS50-2 and BS50Y Foot Compactors • (3) **STIHL** TS400 Pipe Saw • **HONDA** EB3800X Portable Generator, 120/240V • AV14 **CHERNE** Air Ventilator • (3) **STIHL** MH440 Magnum Gas Powered Chain Saw • **TSURUMI 2"** Electric Submersible Pump • 24' Aluminum and Fiberglass Extension Ladders • 12' & 4' Fiberglass Step Ladders • **UNUSED BUYERS** Side Tool Boxes • Rakes, Shovels, Pinch And Pry Bars, Wheelbarrows, Fuel Tanks, And Assorted Hand Tools

(2) **ULTRA SHORE ALUMINUM TRENCH SHIELDS**



PIPE LASERS SURVEYING EQUIPMENT



TOPCON TP-L4AV Pipe Laser, s/n VE0319 • (2) **SPECTRA PRECISION** L500C Laser Levels • **DAVID WHITE** LT8-300 Universal Level-Transit, s/n 501782 • **GURLEY** 8D-7F Transit, s/n 971376 • **NORTHWEST** 32X Auto Level, s/n 4093808 • **SPECTRA PRECISION** LL500 Laser Level, s/n 7665