

RUBBER TIRED LOADERS AND ATTACHMENTS



'98 Cat 980G

1998 CATERPILLAR Model 980G Rubber Tired Loader, s/n 2KR02079, powered by Cat 3406 diesel engine and 4 speed powershift/autoshift transmission, equipped with Balderson 7.5 cu yd. general purpose bucket with bolt-on cutting edge, Cat bucket scale, enclosed ROPS cab with heat and air conditioning, ride control, air ride seat, light package, and 29.5R25 tires. In good condition with good tires. *(Purchased New)*

1996 CATERPILLAR Model 980G Rubber Tired Loader, s/n 2KR00521, powered by Cat 3406 diesel engine and 4 speed powershift/autoshift transmission, equipped with Balderson general purpose loader bucket with bolt-on cutting edge, Cat bucket scale, enclosed ROPS cab with heat and air conditioning, ride control, air ride seat, light package, and 29.5R25 tires. In good condition with good tires. *(Purchased New)*

2000 CATERPILLAR Model 972G Rubber Tired Loader, s/n 7LS00294, powered by Cat 3306 diesel engine and 4 speed powershift/autoshift transmission, equipped with Cat general purpose loader bucket with bolt-on cutting edge, Cat bucket scale, enclosed ROPS cab with heat and air conditioning, ride control, air ride seat, light package, and 26.5R25 tires. In good condition with fair to good tires. *(Purchased New)*

2000 CATERPILLAR Model 972G Rubber Tired Loader, s/n 7LS00292, powered by Cat 3306 diesel engine and 4 speed powershift/autoshift transmission, equipped with Cat general purpose loader bucket with bolt-on cutting edge, Cat bucket scale, enclosed ROPS cab with air conditioning, ride control, air ride seat, light package, and 705/70R25 tires. In good condition with good tires. *(Purchased New)*

BALDERSON 18'6" Snowplow Blade Attachment. In good condition. (Quick Disconnect For Cat 980F)

BALDERSON Model 880-50, 10'10" General Purpose Loader Bucket, s/n 06669, with bolt-on cutting edge. In good condition. (Quick Disconnect For Cat 980F)

BALDERSON Hydraulic Quick Disconnect. In good condition. (Cat 980F)



'96 Cat 980G



'00 Cat 972G s/n 7LS00294



'00 Cat 972G s/n 7LS00292

CRAWLER TRACTORS



'86 Cat D7H



Cat D6D

1986 CATERPILLAR Model D7H Crawler Tractor, s/n 79Z01139, powered by Cat 3306 diesel engine and powershift transmission, equipped with semi-U blade with tilt, Cat A546 multi-shank ripper with single shank, ROPS over enclosed cab, and 22" SBG pads. In good condition with good undercarriage. *(Purchased New)*

CATERPILLAR Model D6D Crawler Tractor, s/n 04X08976, powered by Cat 3306 diesel engine and powershift transmission, equipped with straight blade with tilt, drawbar, ROPS over enclosed cab, and 20" SBG pads. In good condition with good undercarriage.

MOTOR SCRAPER

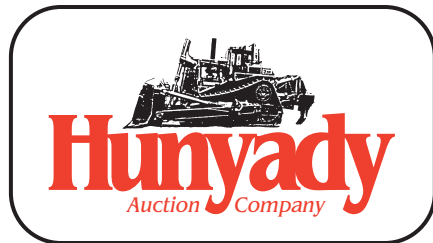


Cat 615 CATERPILLAR Model 615 Elevating Motor Scraper, s/n 46Z00841, powered by Cat 3306 diesel engine and 6 speed powershift transmission, equipped with open ROPS canopy and 29.5-25 tires. In good condition with fair tires. *(Purchased New)*

TRACTOR LOADER BACKHOE & HYDRA HAMMER



'85 JCB 1700 CHAMPION Model H-16 Hydra Hammer, s/n 2157, mounted on Ford Utility Tractor, powered by 4 cylinder diesel engine and Select-O-Speed transmission, equipped with 7.50-16 front and 18.4-26 rear tires. In fair to good condition with fair tires.



1440 Cowpath Rd. • Hatfield, PA 19440 • 800-233-6898 • Fax: 215-361-9212

NOTICE: Gernatt Asphalt Products has once again decided to liquidate equipment and trucks that are surplus to their present needs. Gernatt Asphalt continues to provide the very best in sand, gravel, and asphalt services throughout Western New York and Northwestern Pennsylvania. Everything in the auction is owned by Gernatt Asphalt and will sell to the highest bidder regardless of price!

AUCTIONEER'S NOTE: Much of the equipment in the sale was purchased new and well maintained by Gernatt Asphalt Products, Inc. Service records will be available on all equipment.

LOCATION: The auction will be conducted at Gernatt's facility at 11860 Olean Road, Chaffee, New York 14030.

TERMS: Payment in full is required on sale day by cash, certified funds, or check with a bank letter of guarantee. Sample letter of guarantee: "We hereby guarantee the payment of our customer _____ written on his account up to _____ dollars for purchases at your auction sale on May 1, 2008." All guaranteed checks should be made payable to Hunyady Auction Co. *Never A Buyer's Premium!*

SALES TAX: Sales Tax will be collected on all items at the rate of 8.75%. **If Buyer is a New York State Resident**, Michael J. Hunyady, Inc., dba Hunyady Auction Company, is a registered vendor in the state of New York, therefore, we are obligated by law to collect sales tax on motor vehicle transactions. *In accordance with New York State Sales Tax Regulation Section 525.2, we are required to collect sales tax as it applies to the "Point of Possession" (which is 8.75%, Erie County).* If you reside in a county that collects sales tax at a lesser rate, you will be provided with Form AU-11 (Sales Tax Refund Form) to be filed at the time you register the motor vehicle. **FINANCING: Financing is available; please contact Susan at Hunyady Auction Company for complete details.**

INSPECTION: Items will be available for inspection one week prior to the auction from 8:00 a.m. until 5:00 p.m., with the exception of Saturday and Sunday, April 26 and 27 at which time the sale site will be closed. Items may also be inspected sale day morning from 7:00 a.m. until 9:00 a.m.

REMOVAL: After complete payment, all sale items may be removed on sale day as long as the removal activity is not disruptive to the sale and only until 5:00 p.m. Items may also be removed Friday, May 2 and Monday, May 5 through Thursday, May 8 from 8:00 a.m. until 5:00 p.m. All items must be removed no later than Thursday, May 8 at 5:00 p.m.

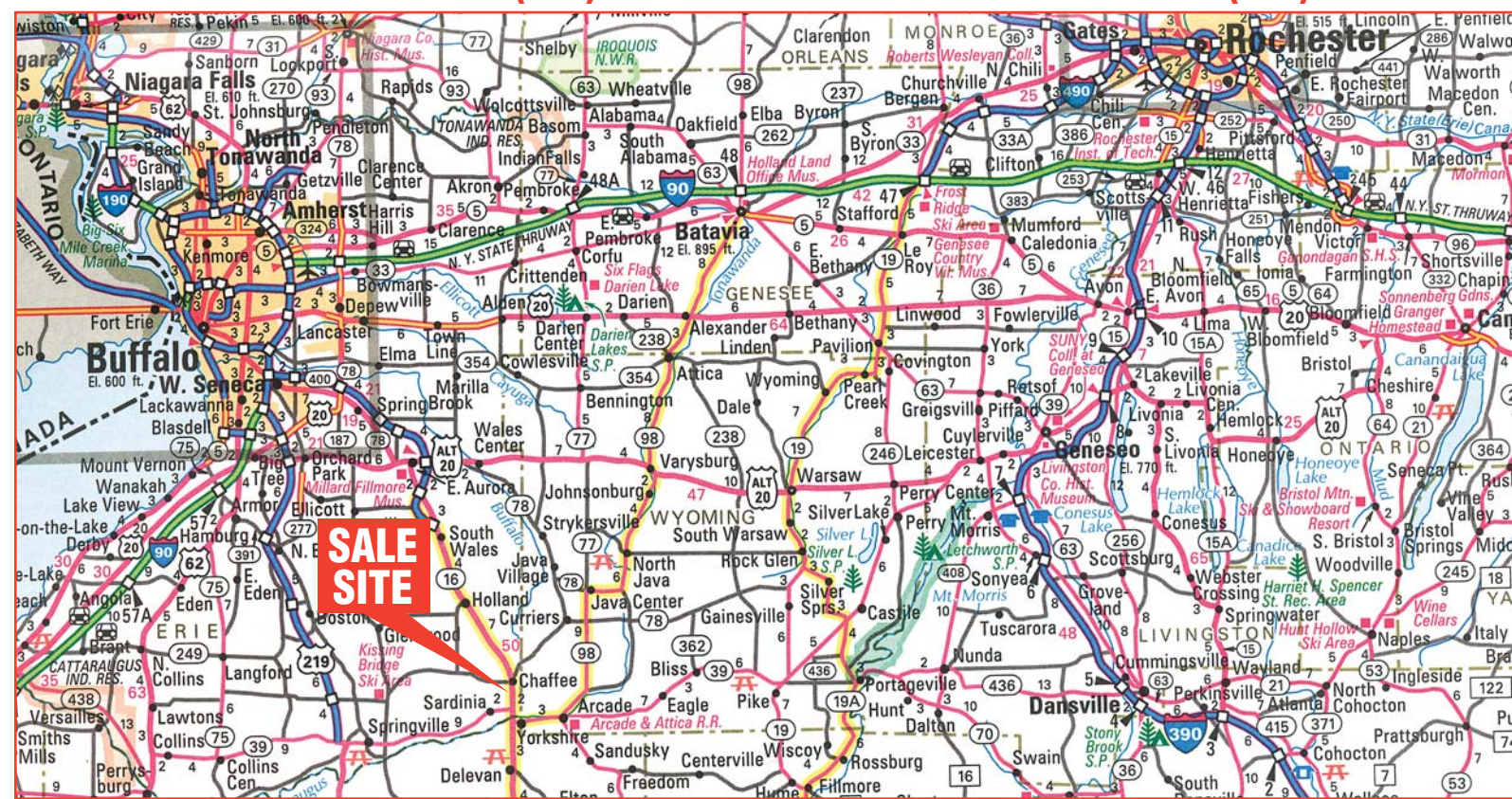
SALE SITE DIRECTIONS: TRAVELING EAST/WEST INTERSTATE 86 (Route 17): Exit #27 (Route 16/446 Hinsdale) Proceed North on Route 16 approximately (28) miles to sale site on left. **FROM BUFFALO:** Route 16 South to Chaffee, New York (watch for sale site signs) Auction site will be on right.

AIRPORT INFORMATION: The area is serviced commercially and privately through the Buffalo International Airport. Rental cars are available.

MOTEL INFORMATION: Microtel Inn & Suites - Springville, NY (716) 592-3141 (Approx. 15 miles from sale site) _ Seneca Alleghany Casino & Hotel - Salamanca, NY (877) 553-9500 (Approx. 45 miles from sale site) • Josie's Brookside Motel (716) 496-5057 • Ben's Nichols Brook Motel (800) 877-1803

NY VENDOR NO: 232593539

SALE SITE PHONE NUMBER: (716) 496-5111 • SALE SITE FAX NUMBER: (716) 496-5059



ABSOLUTE AUCTION SURPLUS EQUIPMENT Thursday, May 1, 2008 - 9:00 A.M.



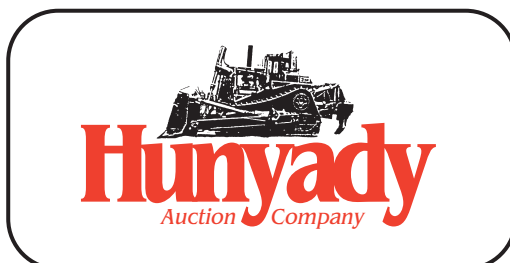
(1) OF (2) CAT 980G



'86 CAT D7H



(1) OF (2) '97 MACK RD690S



1440 COWPATH RD. • HATFIELD, PA 19440
215/361-9099 • Fax: 215/361-9212

PRE-SORTED
FIRST CLASS MAIL
US POSTAGE
PAID
HAVERTOWN, PA
PERMIT #45



ROUGH TERRAIN CRANES AND HOOK BLOCKS



Grove RT865, 65 Ton

GROVE Model RT865, 65 Ton Rough Terrain Crane, s/n 66151, powered by Detroit 6 cylinder diesel engine and 3 speed powershift trans-mission, equipped with 36'-114" 4-section boom with 26' power-pin fly, 32' swingaway jib, (3) 14' inserts, 14' butt section to 88' jib, auxiliary hoist, Kruger anti-two block system, (4) hydraulic outriggers, oil heated cab, and 33.25-29 tires. In good condition with good tires. **(6,151 Original Hours) (Current OSHA Certification Through 3/17/09)**



Grove RT865, 65 Ton

YALE Model RT40-25T, 25 Ton Rough Terrain Crane, s/n 22C-1037, powered by Detroit 4-71 diesel engine and 3 speed powershift transmission, equipped with 26'6"-75'6" 4-section boom with 15' fly section, 16'-24' telescopic jib, single hoist, 3-sheave hook block, weighted ball, (4) hydraulic outriggers, propane heated cab, and 16.00-25 tires. In good condition with good tires. **(Purchased New)**



Yale RT40-25T, 25 Ton

JOHNSON Model 1000N20RTB, 100 Ton 5-Sheave Hook Block, s/n 95972-2, with 1" wire rope. In very good condition.

GROVE 55 Ton 5-Sheave Hook Block, with 3/4" wire rope. In good condition.



Johnson 100 Ton 5-Sheave Hook Block

ROUGH TERRAIN FORKLIFT & AERIAL LIFT



1997 CATERPILLAR Model TH83, 8,000# Telescopic Rough Terrain Forklift, s/n 3RN00723, powered by Cat 3054 diesel engine and 4 speed powershift transmission, equipped with 3-stage telescopic mast, 41' lift height, forks, auxiliary hydraulics, ROPS canopy, and 14.00-24 tires. In good condition with good tires. (Outriggers to be removed)

1988 MARKLIFT Model 30KBDF, 30' Aerial Lift, s/n 1288M3764, powered by Wisconsin gas engine and hydraulic drive.

JAW CRUSHERS, SCREENING PLANT, AND SOIL SHREDDER



CEDARAPIDS Portable Jaw Crusher, s/n 26788, powered by Cat 330, 4 cylinder diesel engine, equipped with 8'x9' feed hopper with grizzly, 24"x27' feed conveyor, 3'x6' 2-deck vibratory screen, 10"x36" jaw, 24"x22' discharge conveyor, 3'x6' single deck screen, Lima 30KW/37.5KVA generator, 3-phase electric motors, mounted on tandem axle trailer with wagon steer. In fair condition with fair tires. **(Purchased New)**

PIONEER 10"x36" Bare Jaw • UNIVERSAL 10"x36" Bare Jaw POWERSCREEN Portable Screening Plant, s/n 2302421, powered by Lister 2 cylinder diesel engine, equipped with 6'x8' feed hopper, 24"x37' conveyor, 3'x6' 2-deck screen, power raise and lower, and 12.0/12.5-18 tires. In good condition with good tires.

ROYER Model 365 Portable Top Soil Shredder, s/n 36581503, powered by John Deere 4 cylinder diesel engine and hydraulic drive, equipped with 5'x8' feed hopper, 30"x14' feed conveyor, 3'x4' shredder, 15"x12' swingout side discharge conveyor, mounted on tandem axle carrier with H78-15 tires. In good condition with fair to good tires.



Royer 365

UTILITY TRACTOR AND SIDE BOOM MOWER

(Will be Offered Separately and As An Entirety)

1989 JOHN DEERE Model 2755 Utility Tractor, s/n L02755T661145, powered by John Deere diesel engine and 8 speed direct drive transmission, equipped with 3-point hitch, PTO, auxiliary hydraulics, 7.50x16 front and 18.4x30 rear tires. In good condition with good tires.

JD 2755 & Woods HS-106-3

WOODS Model HS106-3, 72" Hydraulic Side Boom Mower, s/n 723917, equipped with 3-point hitch mount. In very good condition.



COMMERCIAL MOWER AND 3-WHEEL CARTS



2003 CUB CADET Model Tank, 72" Commercial Riding Mower, s/n 2F-063Z80010, powered by Generac 2 cylinder, 763 cc gas engine and hydrostatic transmission, equipped with zero turn radius. In good condition. **(997 Original Hours)**

(3) TAYLOR-DUNN Model SS5-34 Electric 3-Wheel Carts, s/n 83151, s/n 100516, and s/n 123011, equipped with 24 volt battery system with on-board charger, 500# capacity, and 780# gross weight. In good condition.

'03 Cub Cadet 72"

Taylor-Dunn Electric Carts



DUMP TRUCKS

1997 MACK Model RD690S Tri-Axle Dump Truck, powered by Mack E7-300, 300HP diesel engine and Mack T2080, 8 speed transmission, equipped with J&J 19' aluminum dump body with manual tarp, coal chute, asphalt bed liner, Jacobs 2-position engine brake, 46,000# rears, 20,000# front axle, 13,000# steerable airlift 3rd axle, double frame, air conditioning, cruise control, heated mirrors, air ride cab, and 425/65R22.5 front and 11R22.5 lift and rear tires. In good condition with good tires. **(Purchased New)**



(1) of (2) '97 Mack RD690S

1991 MACK Model RD688S Tandem Axle Dump Truck, powered by Mack E6-350, 350HP diesel engine and Mack TRTXL1070, 12 speed transmission, equipped with Valley 15' steel dump body with 2-way tailgate, 44,000# rears, 20,000# front axle, Dynatard engine brake, heated mirrors, and 425/65R22.5 front and 11R22.5 rear tires. In fair to good condition with good tires.



'91 Mack RD688S

TRUCK TRACTOR & DUMP TRAILERS

1990 MACK Model CH613 Tandem Axle Truck Tractor, powered by Mack E6-350, 350HP diesel engine and Mack TRTXL1070, 12 speed transmission, equipped with 44,000# rears, 12,000# front axle, wetline, single frame, Jacobs 2-position engine brake, air ride suspension, fixed 5th wheel, aluminum front wheels, air conditioning, heated mirrors, and 11R22.5 tires. In good condition with good tires. **(Purchased New)**



'90 Mack CH613

Axle Dump Trailer, equipped with aluminum tub with steel frame, bed liner, coal chute, spring suspension, and 11R22.5 tires. In good condition. **(Purchased New)**



(1) of (2) Fruehauf 35'

BUCKET TRUCK, UTILITY TRUCK, AND PLOW TRUCK

1992 ALTEC Model AN652, 52' Material Handler/Bucket, s/n 0292-U0796, equipped with 350# single man bucket, hydraulic tool outlets, mounted on 1992 Chevrolet Model Kodiak Single Axle Truck, powered by Cat 3116 diesel engine and 6 speed transmission, equipped with Reading 13' utility body, 21,000# rear axle, 12,000# front axle, (4) hydraulic outriggers, and 11R22.5 tires. In good condition with good tires.

1978 GMC Model 6500 Single Axle Utility Truck, powered by V-8 gas engine and 5 speed transmission with 2 speed rear, equipped with 11' utility body, material rack, 27,500# GVWR, 18,500# rear axle, 9,000# front axle, air brakes, and 11R22.5 tires. In fair to good condition with good tires.

1960 OSHKOSH Model W-A-2208, 4x4 Plow/Spread Truck, powered by Cat 6 cylinder diesel engine and 4 speed transmission with 3 speed auxiliary, equipped with 11' front plow, 10'7" side wing plow, 10' PTO powered salt spreader, front mounted PTO, 44,000# GVWR, and 12.00-24 tires. In fair to good condition with fair to good tires.



'92 Altec AN652 on '92 Chevy Kodiak

PICKUP TRUCKS AND VAN BODY



2005 FORD Model F-350 Lariat Super Duty, 4x4 Crew Cab Pickup Truck, powered by Powerstroke diesel engine and automatic transmission, equipped with 8' bed, tow package, power package, power rear sliding window, aluminum wheels, leather interior, heated seats, air conditioning, cruise control, AM/FM CD player, and 275/70R18 tires. In good condition with good to very good tires. **(Purchased New)**



2003 CHEVROLET Model 3500LS, 4x4 Crew Cab Pickup Truck, powered by Duramax diesel engine and Allison automatic transmission, equipped with 8' bed, tow package, dual rear wheels, power package, leather interior, air conditioning, cruise control, heated mirrors, running boards, integrated XM satellite stereo, and 215/85R16 tires. In good condition with good tires.

1999 CHEVROLET Model 2500, 4x4 Extended Cab Pickup Truck, powered by Vortec 6.0L, V-8 gas engine and automatic transmission, equipped with 6' 6" bed, tow package, aluminum wheels, power package, leather interior, air conditioning, cruise control, AM/FM cassette, and 245/75R16 tires. In good condition with good tires.

2000 FORD Model F-150XLT, 4x4 Extended Cab Pickup Truck, powered by Triton V-8 gas engine and automatic transmission, equipped with 8' bed, (4) doors, power package, air conditioning, cruise control, AM/FM cassette, and 245/75R16 tires. In good condition with good tires. **(Purchased New)**

1998 FORD Model F-150XLT, 4x4 Extended Cab Pickup Truck, powered by Triton 4.6L, V-8 gas engine and automatic transmission, equipped with 8' bed, 3rd door, tow package, aluminum wheels, power windows and locks, air conditioning, cruise control, AM/FM cassette, and 245/75R16 tires. In fair to good condition with fair tires. **(Purchased New)**

1985 GMC Model Vandura 3500 Single Axle Van Body Truck, powered by 5.7L, V-8 gas engine and automatic transmission, equipped with 12' FRP van body, roll-up rear door, inside access door, air conditioning, and 8.75R16.5 tires. In fair to good condition with fair tires.

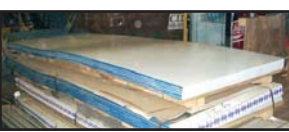


MISCELLANEOUS

(48) 700-.25 HP Electric Motors (Please Contact The Auction Company or Visit Our Website For Complete List) • (Unused) (100 Sheets) 18 Gauge 30"x120" **GALVANNEALED Steel** (4,753 Lbs) • (Unused) (126 Sheets) 18 Gauge 24"x120" **GALVANNEALED Steel** (4,935 Lbs) • (Unused) Approximately (200 Sheets) 4'x8'x.40 Aluminum Sheets, bronze/white • (2) 3/16" Stainless Steel Barrels • (Unused) **GREENHECK RBS-3L72-150, 6'x6' Exhaust Fan** with roof canopy, 15HP, 3-phase, 230/460 volt electric motor • (Unused) **COOK 42XMPH Exhaust Fan**, 3.75HP, 3-phase, 460 volt electric motor • (Unused) (2) **HYTROL 2'x6' Roller Conveyor Power Feed Units** • Pallet Racking, consisting of: (24) 16' high x 48" deep Uprights and 92" length x 48" depth Load Beams • (2) 125 Gallon, 200PSI Horizontal Electric Shop Air Compressors, 3-Phase • **COPELAND Electric Refrigeration Unit Compressor**, 3-phase, 460 volt • 14' Steel Dump Body with manual tarp, hoist, hydraulic tank, and front bumper mount hydraulic pump • **HI-WAY 6'6" Salt Spreader**. (No Motor Or Chain) • (2) 60" General Purpose Loader Buckets. In fair condition. (Skid Steer) • (4) Used 29.5x25 radial recap tires. In fair to good condition.



Galvannealed Steel

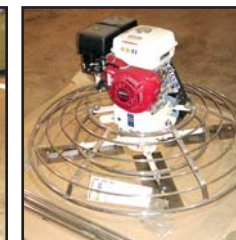


Aluminum Sheets

CONTRACTORS TOOLS AND PATIO FURNITURE



Contractors Tools



Unused Power Trowel

(Unused) **TARGET MC18 13HSTD Walk Behind Concrete Saw**, 13HP gas engine • (Unused) **TARGET PC18 Walk Behind Concrete Saw**, 13HP gas engine • (Unused) **BARTELL B446 Concrete Power Trowel**, 9HP gas engine • (Unused) (2) **METABO KHE54 Spine Drive Hammer Drills** • (Unused) **WHIPPER CLIPPER Gas Powered Edger** • CM Lodestar L2, 1 Ton Electric Chain Hoist, 3-phase, 480 volt, with electric power drive • **P&H 4,500# Electric Chain Hoist**, 3-phase, 460 volt, with electric power drive • **Torch Carts** • (Unused) (3) Round Glass Top Aluminum Patio Tables, with (6) chairs, umbrella, base, 64" round x 27" high • (Unused) (2) Oval Glass Top Patio Tables, with (4) chairs, umbrella, and base • (Unused) (16) Octagon Glass Top Patio Tables • (Unused) (36) Square "High Top" Dining Tables