

**CRAWLER TRACTORS**



**'90 Cat D11N**

**1990 CATERPILLAR Model D11N Crawler Tractor**, s/n 74Z00753, powered by Cat 3508 diesel engine and powershift transmission, equipped with U blade with dual tilt, 4-barrel single shank ripper, s/n P800524, ROPS over enclosed cab with air conditioning, light package, and 32" SBG pads. In good condition with good undercarriage. (Ripper Will Offered Separately and With The Tractor)

**1984 CATERPILLAR Model D10 Crawler Tractor**, s/n 84W01034, powered by Cat D348 diesel engine and powershift transmission, equipped with U blade with tilt, 4-barrel single shank ripper, s/n 32W00704, with hydraulic pin puller, ROPS over enclosed cab, air conditioning, light package, and 32" SBG pads. In good condition with fair to good undercarriage.

**CATERPILLAR Model D9H Crawler Tractor**, s/n 90V7022, powered by Cat D353E diesel engine and powershift transmission, equipped with U blade with tilt, 2-piece rear counterweight with tow pin, rock guards, enclosed ROPS cab, and light package. In fair to good condition with fair to good undercarriage. (Weak Engine)

**CATERPILLAR Model D6D LGP Crawler Tractor**, s/n 6X1460, powered by Cat 3306 diesel engine and powershift transmission, equipped with straight blade with tilt, rear winch, s/n 36U607, ROPS over enclosed cab with heat, light package, and 36.5" SBG pads. In good condition with good undercarriage.

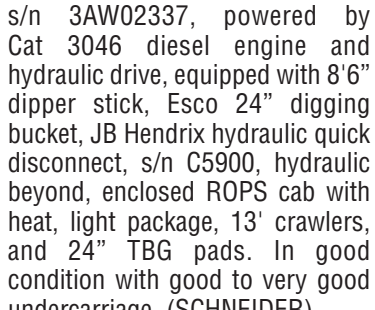
**HYDRAULIC EXCAVATORS AND ATTACHMENTS**

**1997 CATERPILLAR Model 320B Hydraulic Excavator**, s/n 5BR01321, powered by Cat 3066, 128HP diesel engine and hydraulic drive, equipped with 9'6" dipper stick with thumb bracket, 46" digging bucket, enclosed ROPS cab with heat, light package, 13'6" crawlers, and 31.5" TBG pads. In good condition with good undercarriage. (TOMSON)



**'97 Cat 320B**

**2000 CATERPILLAR Model 315BL Hydraulic Excavator**, s/n 3AW02337, powered by Cat 3046 diesel engine and hydraulic drive, equipped with 8'6" dipper stick, Esco 24" digging bucket, JB Hendrix hydraulic quick disconnect, s/n C5900, hydraulic beyond, enclosed ROPS cab with heat, light package, 13" crawlers, and 24" TBG pads. In good condition with good to very good undercarriage. (SCHNEIDER)



**'00 Cat 315BL**

**1996 CATERPILLAR Model 311 Hydraulic Excavator**, s/n 9LJ00792, powered by Cat 3064 diesel engine and hydraulic drive, equipped with 9' dipper stick, 24" digging bucket, hydraulic thumb, hydraulic plumbing, enclosed ROPS cab, light package, 11' crawlers, and 30" TBG pads. In good condition with good undercarriage.



**'96 Cat 311**

**(2) DEMAG HYDRAULIC EXCAVATORS**

**1988 DEMAG Model H65 Hydraulic Excavator**, s/n 26014, powered by Cat 3406 diesel engine and hydraulic drive, equipped with 9' dipper stick, 72" digging bucket, ROPS over enclosed cab, air conditioning, light package, 17'8" crawlers, and 28" DBG pads. In fair to good condition with fair to good undercarriage.



**(1) OF (2) '88 Demag H65**

**1988 DEMAG Model H65 Hydraulic Excavator**, s/n 26041, powered by Cat 3406 diesel engine and hydraulic drive, equipped with 10' dipper stick, 72" digging bucket, ROPS over enclosed cab, air conditioning, light package, 17'9" crawlers, and 28" DBG pads. In fair condition with fair to good undercarriage. (Missing Engine Enclosure On Left Side)

**(2) GRADALL HYDRAULIC EXCAVATORS**

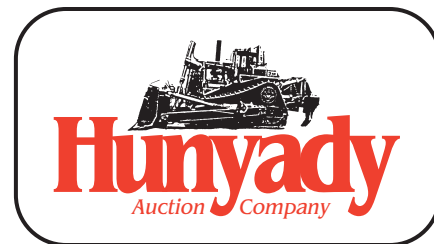
**GRADALL Model G1000 Hydraulic Excavator**, s/n NP315764, powered by (2) Detroit 4-71 diesel engines and hydraulic drive, equipped with 2-section rotating boom, 74" clean-up bucket with teeth, 14" crawlers, and 30" TBG pads. In good condition with good undercarriage.



**(1) OF (2) Gradall G1000**

**GRADALL Model G1000 Hydraulic Excavator**, s/n NP324332, powered by (2) Detroit 4-71 diesel engines and hydraulic drive, equipped with 2-section rotating boom, 76" digging bucket with weld-on cutting edge, 14'2" crawlers, and 30" TBG pads. In poor condition with poor undercarriage. (Missing Two Drive Motors) (One Track Removed) (One Engine Missing Parts)

**36" Digging Bucket**. In good condition. (Cat 311) • **72" Digging Bucket**. In fair condition. (Demag H65)  
**ALLIED Model 740 Hy-Ram Hydraulic Demolition Hammer**, s/n HM553. In fair condition. (Cat 311)



**1440 Cowpath Rd. • Hatfield, PA 19440 • 800-233-6898 • Fax: 215-361-9212**

**NOTICE:** South Bend Limestone Company has completed all current reclamation projects and is proceeding with the second and final phase of liquidation. A few consignments have been taken from local contractors and miners, including Glenn O. Hawbaker, Inc., Walter L. Houser Coal Company, Inc., and Schneider Services, Inc. Everything in the auction is owned by these companies and must sell to the highest bidder regardless of price!

**LOCATION:** The auction will be conducted at South Bend Limestone Mine Site, located at 164 Jacobs Lane, Spring Church, Pennsylvania 15686

**TERMS:** Payment in full is required on sale day by cash, certified funds, or check with a bank letter of guarantee. Sample letter of guarantee: "We hereby guarantee the payment of our customer \_\_\_\_\_ written on his account up to \_\_\_\_\_ dollars for purchases at your auction sale on September 27, 2007" All guaranteed checks should be made payable to Hunyady Auction Co.

**INSPECTION:** Items will be available for inspection one week prior to the auction from 8:00 a.m. until 5:00 p.m. (with the exception of Saturday and Sunday, September 22 and 23, at which time the site will be closed) or sale day morning from 7:00 a.m. until 9:00 a.m.

**REMOVAL:** After complete payment, all sale items may be removed on sale day as long as the removal activity is not disruptive to the sale and only until 5:00 p.m. Items may also be removed Friday, September 28 and Monday, October 1 through Thursday, October 4, from 8:00 a.m. to 5:00 p.m. All items must be removed no later than Thursday, October 4, 2007, at 5:00 p.m.

**SALE SITE DIRECTIONS:** TRAVELING EAST OR WEST ON US ROUTE 422 (In Shelocta, PA): Turn onto State Routes 156 South/56 West and proceed (6) miles to sale site on right.

**AIRPORT INFORMATION:** This area is serviced commercially through Pittsburgh International Airport and privately through Jimmy Stewart Airport, Indiana, PA.

**MOTEL INFORMATION (LOCATED IN INDIANA, PA):** Holiday Inn (724) 463-3561 • Comfort Inn (724) 465-7000 • Best Western (724) 349-9620 • Super 8 (724) 349-4600

**PA AUCTION LICENSE NO:** AY000281

**SALE SITE PHONE NUMBER: (724) 478-1493 • SALE SITE FAX NUMBER: (724) 478-4607**

**SALT SPREADERS, CONTRACTORS TOOLS, ATTACHMENTS, PARTS, AND MISCELLANEOUS**



**10,000 Gallon Fuel Tank**

(2) **CURTIS TS17 Gas Powered Salt Spreaders (HAWBAKER)** • **HOBART Gas Powered Welder (HAWBAKER)** • **LINCOLN SAE200 Welder**, s/n A81834, 3 cylinder diesel engine. • **LINCOLN Idealarc 250 Welder**, s/n AC-560544 • **SNAP-ON Rolling Tool Box** with tools • **INGERSOLL-RAND 3/4" Pneumatic Impact Wrench** • **CRAFTSMAN 1/2" Pneumatic Impact Wrench** • **DEWALT 9" Electric Angle Grinder** • **DEWALT 4-1/2" Electric Angle Grinder** • **JET 16-Speed 5/8" Drill Press** • **BLACK & DECKER 1/2" Electric Drill** • **EXIDE 6/12/24 Volt Battery Charger** • **KOEHRING Gas Powered Foot Compactor**, **MASTER 110,000 BTU Space Heater** • **THOR Pneumatic Paving Breaker** • **1" Drive Socket Set** • (2) **Manual Lubers** • **Shop Vac** • 5'10"x7'3" **Welding Table** • **Bolt Bin** • **Oxygen/Acetylene Torch Set** • 3/4" **Socket Set** • **RIDGID 30" Pipe Wrench** • (2) **Welding Screens** • 20' **Aluminum Extension Ladder** • (2) **Bench Vises** • (2) **THOR Pneumatic Paving Breakers** • **KIESLER 1/2 Yard Clamshell Bucket**. In good condition. • **ATHEY Model 156, 10' 10-Tine Chisel Plow**, s/n C71295. In good condition with poor tires. • 8' **3-Point Hitch Chisel Plow**, 6.70x15 tires • (12) **MULTI Gas Valves** with Multi Max III+ digital controller • **Steel Work Bench** with vise • **Chain Vise** with stand • (2) **Cable Come-A-Longs** • **HARRINGTON 1 Ton Chain Come-A-Long** • 10,000 Gallon **Skid Mounted Fuel Storage Tank** • 500 Gallon **Fuel Storage Tank** with stand • #096 500 Gallon **Skid Mounted Waste Oil Storage Tank** • Approx. 250 Gallon **Portable Fuel Tank** with manual pump, mounted on Johnson 1.5 Ton **Military Trailer** • 300 Gallon **Fuel Storage Tank** with stand • 275 Gallon **Skid Mounted Fuel Storage Tank** • 4" **Discharge Hose** • **CATERPILLAR 3408 Diesel Engine** with engine stand • (14) **Used 12 and 24 Volt Starters** • (Approx. 4 Pallets) **Assorted Equipment Filters** • **Small Quantity Assorted Machine Parts** • (2) **Contractors Kits** including rakes, shovels, brooms, extension cords, etc.

**AIR COMPRESSOR AND PUMPS**

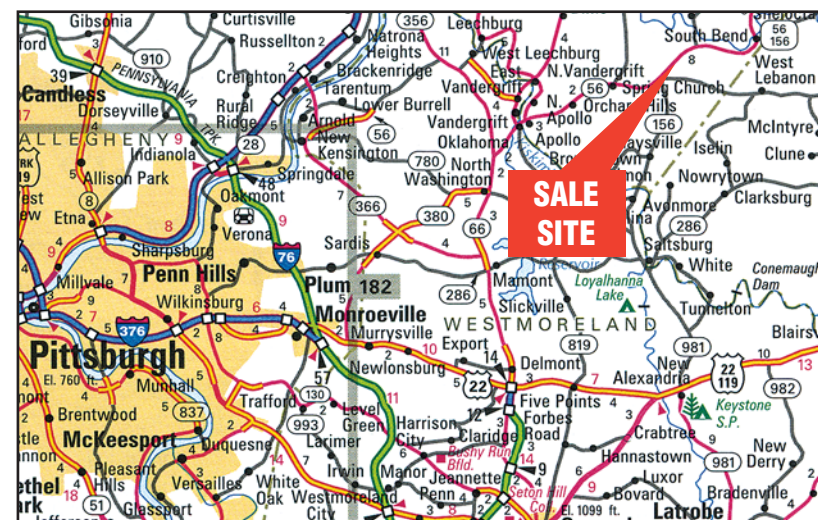
**JAEGER Model A Size 150DV, 150 CFM Portable Air Compressor**, s/n RC-31644, powered by Detroit 2 cylinder diesel engine, equipped with 215/60R15 tires. In fair condition with fair tires.

**GORMAN RUPP Model 14A2B, 4" Portable Pump**, s/n 612517, powered by Detroit 3 cylinder diesel engine, equipped with 10.00-20 tires. In fair condition with fair tires.

**VANISCO Type J702MRMAD, 3" Portable Trash Pump**, powered by Acme 1 cylinder diesel engine. In fair condition.

**PORTABLE STEAM CLEANER**

**HOTSY Model 1260A Steam Cleaner**, s/n H373790497, powered by Briggs & Stratton 16HP, 2 cylinder gas engine, rated @ 4.5GPH/270GPH, 3,000 PSI, 386,000 BTU/hour, equipped with 250 gallon poly water tank, mounted in 8'x14'6" single axle tag-a-long van body trailer, equipped with roll-up rear door and 8.00-16.5 tires. In good condition with good tires.



**ABSOLUTE AUCTION COMPLETE LIQUIDATION PHASE II Thursday, September 27, 2007 - 9:00AM**



**SOUTH BEND LIMESTONE COMPANY Spring Church, Pennsylvania (Kittanning/Indiana Area)**



**'90 CAT D11N**



**EUCLID R85 AND '88 DEMAG H65**



**CAT 988B**



1440 COWPATH RD. • HATFIELD, PA 19440  
 215/361-9099 • Fax: 215/361-9212

PRE-SORTED  
 FIRST CLASS MAIL  
 US POSTAGE  
**PAID**  
 HAVERTOWN, PA  
 PERMIT #45

**RUBBER TIRED LOADERS AND ATTACHMENTS**



**1978 CATERPILLAR Model 992C Rubber Tired Loader**, s/n 42X344, powered by Cat 3412 diesel engine and powershift transmission, equipped with spade nose bucket with teeth, ROPS over enclosed cab with air conditioning, light package, and 45/65x45 tires. In good condition with good tires.

**Cat 992C**

**1982 CATERPILLAR Model 988B Rubber Tired Loader**, s/n 50W05976, powered by Cat 3408 diesel engine and powershift transmission, equipped with general purpose bucket with teeth, enclosed ROPS cab with air conditioning, light package, and 35/65x33 tires. In good condition with fair to poor tires. (HOUSER)



**'82 Cat 988B**



**(1) OF (2) '79 Cat 988B**

**1979 CATERPILLAR Model 988B Rubber Tired Loader**, s/n 50W3951, powered by Cat 3208DI diesel engine and powershift transmission, equipped with general purpose bucket with teeth, pneumatic lube system, enclosed ROPS cab with air conditioning, light package, and 35/65x33 tires. In good condition with good to very good tires.

**1979 CATERPILLAR Model 988B Rubber Tired Loader**, s/n 50W3776, powered by Cat 3408 diesel engine and powershift transmission, equipped with general purpose loader bucket with bolt-on cutting edge, ROPS over enclosed cab, air conditioning, light package, and 35/65x33 tires. In fair to good condition with fair tires. (Rebuilt Center Pin) (Rebuilt Steering Cylinders)



**1977 CATERPILLAR Model 988B Rubber Tired Loader**, s/n 50W1816, powered by Cat 3408 diesel engine and powershift transmission, equipped with general purpose bucket with bolt-on cutting edge, enclosed ROPS cab with air conditioning, light package, and 65/35x33 tires. In good condition with poor tires.

**'77 Cat 988B**

**1987 CATERPILLAR Model 916 Rubber Tired Loader**, s/n 2XB01278, powered by 4 cylinder diesel engine and powershift transmission, general purpose loader bucket with bolt-on cutting edge, 5' bucket forks, enclosed ROPS cab with heat and air conditioning, light package and 17.5R25 tires. In good condition with fair tires. (SCHNEIDER)



**'87 Cat 916**

**DRESSER Model 530 Rubber Tired Loader**, s/n 5303470530U001621, powered by International 6 cylinder diesel engine and powershift transmission, equipped with general purpose loader bucket with weld-on cutting edge, side counterweight, enclosed ROPS cab, light package, and 20.5x25 tires. In fair condition with fair to good tires.



**Dresser 530**

**CATERPILLAR Model 922B Rigid Frame Rubber Tired Loader**, s/n 94A03671, powered by Cat 4 cylinder diesel engine and shuttle transmission, equipped with general purpose loader bucket with weld-on cutting edge, enclosed ROPS cab, light package, and 15.5-25 tires. In fair condition with fair tires. (HAWBAKER)



**Cat 922B**

**Loader Bucket with weld-on cutting edge**. In good condition. (Cat 988B) • Spade Nose Bucket. In fair condition. (Cat 992C)

**CRAWLER LOADERS**

**CATERPILLAR Model 953 Crawler Loader**, s/n 20Z00150, powered by Cat 3204 diesel engine and hydrostatic transmission, equipped with general purpose loader bucket with teeth, enclosed ROPS cab, rock guards, and 20" DBG pads. In good condition with poor to fair undercarriage.



**Cat 953**

**CATERPILLAR Model 977L Crawler Loader**, s/n 11K8662, powered by Cat 3306 diesel engine and powershift transmission, equipped with general purpose loader bucket with teeth, enclosed ROPS cab, tow hitch, and 18" DBG pads. In fair to good condition with good undercarriage.



**Cat 977L**

**END DUMPS**



**(2) Cat 773B**



**Cat 769C**



**Euclid R35**



**(2) Euclid R85**

**CATERPILLAR Model 773B, 50 Ton End Dump**, s/n 63W01060, powered by Cat 3412 diesel engine and 7 speed powershift transmission, equipped with lined and heated body, supplemental steering, brake retarder, rock ejectors, air conditioning, and 21.00R35 tires. In good condition with fair to good tires. (HOUSER)

**CATERPILLAR Model 773B, 50 Ton End Dump**, s/n 63W00370, powered by Cat 3412 diesel engine and 7 speed powershift transmission, equipped with lined and heated body, supplemental steering, brake retarder, and 21.00R35 tires. In good condition with fair to good tires. (HOUSER)

**CATERPILLAR Model 769C, 35 Ton End Dump**, s/n 1X389, powered by Cat 3408 diesel engine and 7 speed powershift transmission, equipped with lined and heated body, supplemental steering, brake retarder, quick fuel, rock ejectors, air conditioning, light package, and 18.00R33 tires. In good condition with fair tires.

**CATERPILLAR Model 769B, 35 Ton End Dump**, s/n 99F6213, powered by D343 diesel engine and 3 speed powershift transmission, equipped with lined body, rock ejectors, light package, and 18.00x25 tires. In fair condition with fair tires.

**EUCLID Model R35, 35 Ton End Dump**, s/n 71741, powered by Cummins K-19-C diesel engine and 6 speed powershift transmission, equipped with lined body, rock ejectors, brake retarder, air conditioning, and 18.00x33 tires. In good condition with fair to good tires.

**EUCLID Model R85, 85 Ton End Dump**, s/n 63514, powered by Detroit 16V-71 electric start diesel engine and 6 speed powershift transmission, equipped with body liner, brake retarder, supplemental steering, rock ejectors, air conditioning, and 24.00x49 tires. In good condition with poor to fair tires.

**EUCLID Model R85, 85 Ton End Dump**, s/n 63515, powered by Detroit 16V-71 air start diesel engine and 6 speed powershift transmission, equipped with body liner, brake retarder, supplemental steering, rock ejectors, air conditioning, and 24.00x49 tires. In good condition with good tires.

**EUCLID Model 70TD, 30 Ton End Dump**, s/n 34315, powered by Cummins 6 cylinder diesel engine and 6 speed powershift transmission, equipped with lined body, rock ejectors, air conditioning, and 18.00x25 tires. In fair condition with fair to good tires.

**PORTABLE SCREENING PLANT AND RADIAL STACKING CONVEYORS**



**'94 Screen Machine D510**



**(2) Screen Machine 40' Stackers**

**1994 SCREEN MACHINE Model D510-M11 Portable Screening Plant**, s/n D510-M11-9D445, powered by Cummins 5.9L, 6 cylinder diesel engine with Funk hydraulic power unit, equipped with 5'x14' feed hopper with hydraulic grizzly, 48"x14' belt feeder, 48"x45' screen feed conveyor, 5'x10' double vibratory screen, soil shredding attachment, and 10.00x20 tires. In good condition with good tires.

**2001 SCREEN MACHINE Model CH40-24, 24"x40' Hydraulic Radial Stacking Conveyor**, s/n CH40-24-JA1316, equipped with hydraulic raise and 8x14.5 tires. In good condition with good tires.

**1985 SCREEN MACHINE Model CH-40, 24"x40' Hydraulic Radial Stacking Conveyor**, s/n CH-40-HE73, equipped with hydraulic raise and 8x14.5 tires. In good condition with good tires.

**BLASTHOLE DRILL**

**DAVEY Model M8A Blasthole Drill**, s/n 983, powered by Detroit 6-53 diesel engine, equipped with Davey 6-stage air compressor, s/n 18411, top drive, Ramsey cable retrieval winch, 40' mast, (10) 20"x4" drill steels, (1) 30"x4" drill steel, (3) hydraulic stabilizers, mounted on 1974 Ford Model 900 Tandem Axle Carrier, VIN# 791LVQ30133, powered by 8 cylinder gas engine and 4 speed transmission with 4 speed auxiliary, equipped with 10.00x20 tires. In fair condition with fair tires.

**MOTOR GRADER**



**Cat 12F**

**CATERPILLAR Model 12F Motor Grader**, s/n 73G2251, powered by Cat 6 cylinder diesel engine and 4 speed transmission with 2 speed transfer case, equipped with 12' moldboard, wheel lean, ROPS canopy, and 14.00x24 tires. In fair condition with good tires.

**SKID STEER LOADER AND ATTACHMENTS**

**1990 CASE Model 1840 Skid Steer Loader**, s/n JAF0064983, powered by Case 4 cylinder diesel engine and hydrostatic transmission, equipped with 62" loader bucket and 10x16.5 tires. In fair condition with good tires.

**Case Skid Steer Attachments: 44" Fork Attachment**. In good condition • 40" Bucket with shopmade extension. In good condition • 62" Bucket with shopmade extension. In good condition

**PICKUP TRUCKS**



**'02 Dodge 4x4**



**'00 GMC 3500 4x4**

**2002 DODGE Model Ram 2500 Laramie SLT, 4x4 Pickup Truck**, powered by 8 cylinder gas engine and automatic transmission, equipped with 8' bed with liner, air conditioning, cruise control, power windows, locks and mirrors, and 265/75R16 tires. In good condition with good tires.

**2000 GMC Model 3500SL, 4x4 Pickup Truck**, powered by Vortec 8 cylinder gas engine and automatic transmission, equipped with 8' bed with spray-on liner, bed rails, tow package, air conditioning, cruise control, and 245/75R16 tires. In good condition with good tires.

**FLATBED, SERVICE, AND WELDER TRUCKS**

**1996 FORD Model F-350XL, 4x4 Single Axle Flatbed Truck, Service Truck**, powered by 8 cylinder gas engine and automatic transmission, equipped with 12' open service body with 12" work bumper with vise, AutoCrane 18' service boom, Emglo model W11HGB-30, 2-stage air compressor, powered by Honda 11HP gas engine, self-winding hose reel, (2) manual outriggers, air conditioning, and 9.00x20 tires. In fair to good condition with good tires.

**1980 GMC Model 7000 Single Axle Service Truck**, powered by 8 cylinder gas engine and automatic transmission, equipped with 12' open service body with 12" work bumper with vise, AutoCrane 18' service boom, Emglo model W11HGB-30, 2-stage air compressor, powered by Honda 11HP gas engine, self-winding hose reel, (2) manual outriggers, air conditioning, and 9.00x20 tires. In fair to good condition with good tires.

**FORD Model F-600 Single Axle Welder Truck**, powered by 8 cylinder gas engine and 4 speed transmission with 2 speed rear, equipped with 10' welder body with (2) manual outriggers and 8.25x20 tires. In fair condition with fair tires.

**CHEVROLET School Bus**, equipped with 9.00x20 tires. In poor condition with poor tires. (No Engine, Transmission Or Front Axle - Used For Storage Only)

**BOOM TRUCK AND BUCKET TRUCK**

**RO Model TD701A, 15,000# Hydraulic Crane**, s/n 125, equipped with 16'-31'8" 3-section boom, weighted hook, (2) operator stations, and (2) hydraulic outriggers, mounted on 1972 Ford Model 8000 Tandem Axle Flatbed Truck, powered by Cat 3206, 210HP diesel engine and 5 speed with 3 speed auxiliary transmission, equipped with 16' steel stakebed, walking beam spring suspension, PTO, and 10.00R20 tires. In fair to good condition with good tires. (HAWBAKER)

**RO 15,000# Boom Truck**

**HOLAN Model EHV-52 Aerial Lift**, equipped with 36' max reach, mounted on 1984 Ford Model F-800 Service Body, powered by gas engine and 5 speed transmission, equipped with outriggers. In fair condition with fair tires. (HAWBAKER)

**CAB AND CHASSIS, DUMP, FUEL, AND WATER TRUCKS**

**1985 MACK Model RD686S Tandem Axle Cab & Chassis**, powered by Mack EM6-300 diesel engine and 6 speed transmission, equipped with 44,000# rears, 12,860# front axle, double frame, 2-position Jake brake, 227" wheelbase, air conditioning, and 11R24.5 tires. In fair to good condition with good tires.

**1982 FORD Model 8000 Tandem Axle Dump Truck**, powered by Cat 3208 diesel engine and Fuller 10 speed transmission, equipped with 14'6" steel dump body and 10.00R20 front and 11.00x20 rear tires. In fair condition with good tires. (Transmission Needs Work - High Side of Transmission Out)

**1968 MILITARY Model M109A3, 2.5 Ton 6x6 Fuel Truck**, powered by 6 cylinder diesel engine and 5 speed transmission with 2 speed transfer case, equipped with approx. 1,000 gallon fuel body, Blackmer PTO pump, electric winding hose reel, and 9.00x20 tires. In fair condition with fair tires.

**INTERNATIONAL Model Fleetstar 2000 Tandem Axle Water Truck**, powered by International 6 cylinder diesel engine and 5 speed transmission, equipped with approx. 1,500 gallon water/brine tank, rear spray bar, and 10.00x20 tires. In poor to fair condition with poor tires.

**1966 INTERNATIONAL Model RF190ZZ Tandem Axle Water Truck**, powered by International 6 cylinder diesel engine and 4 speed transmission with 2 speed auxiliary, equipped with approx. 1,000 gallon steel water tank, front and rear spray bars, and 10.00x20 tires. In poor to fair condition with fair to good tires.

**DUMP TRAILERS**

**1973 PENN 26' Tandem Axle Aluminum Dump Trailer**, equipped with steel frame, tarp kit, and 11R22.5 tires. In good condition with good tires. (HAWBAKER)

**1972 CITY 26' Tandem Axle Aluminum Dump Trailer**, equipped with tarp kit and 11R24.5 tires. In good condition with good tires. (HAWBAKER)

**'72 City 26'**

**OFFICE, STORAGE, AND TAG-A-LONG TRAILERS**

**TRIPLE A 10'x44' Tandem Axle Office Trailer**, equipped with (3) offices, central air conditioning, baseboard heat, bathroom, (2) man doors, plan table, and 7x14.5 tires. In good condition with good tires.

**VENTURE 9'9"x36' Tandem Axle Office Trailer**, equipped with (1) office, conference room, central air conditioning and heat, security system, (2) man doors, plan table, and 7x14.5 tires. In good condition with good tires.

**FRUEHAUF 45' Tandem Axle FRP Storage Trailer**, equipped with sliding tandems, roll-up rear door, swing side door, and 11R22.5 tires. In fair condition with fair to poor tires.

**Shopmade Tandem Axle Tag-A-Long Trailer**, equipped with 6'9"x12'2" steel deck, 19" sides, fold-down ramp, and F78x15 tires. In good condition with good tires.