

CRAWLER TRACTORS



'97 Cat D8R



'90 Case 850D

1997 CATERPILLAR Model D8R Crawler Tractor, s/n 7XM01460, powered by Cat 3406C diesel engine and powershift transmission, equipped with semi U blade with single tilt, Cat 8SS 4-barrel ripper, s/n 1HF03696, with pin pull, differential steering, enclosed ROPS cab with air conditioning, and 24" extreme service SBG pads. In good condition with good undercarriage. (Undercarriage Replaced Approx. 2,000 Hours Ago) (In-Frame Rebuilt Engine Approx. 1,000 Hours Ago)

1999 CATERPILLAR Model D5CXL Series III Hystat Crawler Tractor, s/n 7PS00894, powered by Cat 3046 diesel engine and hydrostatic transmission, equipped with 6-way straight blade, tow hitch, enclosed ROPS cab with air conditioning, and 20" SBG pads. In good condition with fair to good undercarriage. (Purchased New)



'99 Cat D5CXL III

1990 CATERPILLAR Model 850D Crawler Tractor, s/n JAK0002639, powered by Case Turbo diesel engine and hi-lo reversing transmission, equipped with 6-way hydraulic straight blade, ROPS canopy with sweeps, 9'10" long track crawlers, and 18" SBG pads. In good condition with good undercarriage. (DY)

HYDRAULIC EXCAVATORS AND ATTACHMENTS

1999 CATERPILLAR Model 330BL Hydraulic Excavator, s/n 6DR02998, powered by Cat 3306B diesel engine and hydraulic drive, equipped with 10'6" dipper stick and 36" digging bucket, air conditioning, 16'3" crawlers, and 33.5" TBG pads. In good condition with good undercarriage. (Berco Undercarriage. Approx. 2,500 Hours Ago) (Remanufactured Main Hydraulic Pump - Cleveland Bros.)

'99 Cat 330BL

1997 CATERPILLAR Model 330BL Hydraulic Excavator, s/n 6DR01193, powered by Cat 3306B diesel engine and hydraulic drive, equipped with 11' dipper stick, 48" digging bucket with ripper pocket, air conditioning, 16'6" crawlers, and 33.5" TBG pads. In good condition with fair undercarriage. (Out Of Frame Complete Engine Rebuild - In-House) (Final Drives Rebuilt) (Main Hydraulic Pump Rebuilt)



'97 Cat 330BL

2004 DAEWOO Model Solar 300LC-V Hydraulic Excavator, s/n 200404202356, powered by Daewoo DE12T diesel engine and hydraulic drive, equipped with 10" dipper stick, 42" digging bucket, 16'3" crawlers, and 31.5" TBG pads. In good condition with good undercarriage. (All Points Capital)

'04 Daewoo Solar 300LC-V

1991 CATERPILLAR Model 225D-LC Hydraulic Excavator, s/n 2SJ00897, powered by Cat 3208T Turbo diesel engine and hydraulic drive, equipped with 10' dipper stick, 40" digging bucket with H&H thumb attachment, 14'6" crawlers, and 30" TBG pads. In fair to good condition with fair undercarriage.

'91 Cat 225D-LC

1990 CATERPILLAR Model 225D-LC Hydraulic Excavator, s/n 2SJ00467, powered by Cat 3208 Turbo diesel engine and hydraulic drive, equipped with 10' dipper stick, 30" digging bucket with side cutters, hydraulic beyond, 14'6" crawlers with rock guards, and 30" TBG pads. In good condition with good undercarriage.

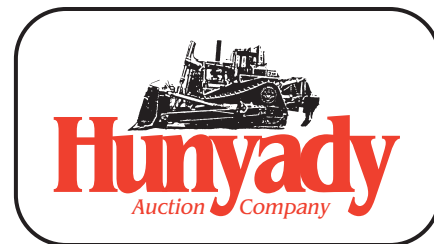


'90 Cat 225D-LC

1988 CATERPILLAR Model 225B-LC Hydraulic Excavator, s/n 2ZD01032, powered by Cat 3208 (remfg.) diesel engine and hydraulic drive, equipped with 10' dipper stick, hydraulic beyond, stiff arm bracket, 48" digging bucket, vandalism kit, 14'6" crawlers, and 30" TBG pads. In fair to good condition with fair to good undercarriage.

'88 Cat 225B-LC and '98 Tramac BRV32

1998 TRAMAC Model BRV32 Hydraulic Hammer, s/n 115727. In good condition. (Fits Cat 225BL) (Rebuilt June '07)
ROCKRAM Model 778ERS Hydraulic Hammer, s/n 53942 (Fits Cat 225) (Parts Only)
Buckets: Cat 330: 44" and 30" Digging Buckets • Cat 225: 40", 32", and 30" Digging Buckets
 (5) Bottom and (4) Carrier Rollers (Cat 330)



1440 Cowpath Rd. • Hatfield, PA 19440 • 800-233-6898 • Fax: 215-361-9212

NOTICE: After completing several large projects, Paer Ahnert Enterprises, Inc., a long time and respected developer in the Pocono area, has decided to liquidate the majority of their dirt moving and excavation spread. A few items have been consigned by local contractors and financial institutions. Everything will positively sell to the highest bidder regardless of price!

LOCATION: The auction will be held at Paer Ahnert's yard located at 23 Mt. Nebo Road, Marshalls Creek, Pennsylvania 18335
INSPECTION: Items will be available for inspection beginning Monday, November 12, 8:00 a.m. to 5:00 p.m. or sale day morning from 7:00 a.m. to 9:00 a.m.

TERMS: Payment in full is required on sale day by cash, certified funds, or check with a bank letter of guarantee. Sample letter of guarantee: "We hereby guarantee the payment of our customer _____ written on his account up to _____ dollars for purchases at your auction sale on November 16, 2007." All guaranteed checks should be made payable to Hunyady Auction Co. **Never A Buyer's Premium!**

SALES TAX: Since this contractor is selling items not normally sold in the course of his business, the Commonwealth of Pennsylvania considers this an isolated sale and does not require the auction company to collect sales tax. However, the Commonwealth does require the collection of sales tax on items being sold on behalf of lending institutions, equipment rental companies and dealers, etc. These items will be so noted in the sale day catalog.

REMOVAL: After complete payment, all sale items may be removed on sale day as long as the removal activity is not disruptive to the sale and only until 5:00 p.m. Items may also be removed Saturday, November 17, Monday, November 19, and Tuesday, November 20, from 8:00 a.m. until 5:00 p.m. All items must be removed no later than Tuesday, November 20th, at 5:00 p.m.

SALE SITE DIRECTIONS: FROM INTERSTATE 80: Exit #309 (Marshalls Creek Routes 447 and 209 North), at end of ramp proceed straight onto Route 209 North. Continue (3.3) miles and turn right at traffic light. Continuing on Route 209 North for an additional (1.1) miles and turn right onto Mt. Nebo Road (immediately after Wendy's) Proceed to sale site on left.

SALE SITE PHONE NUMBER (570) 223-7634

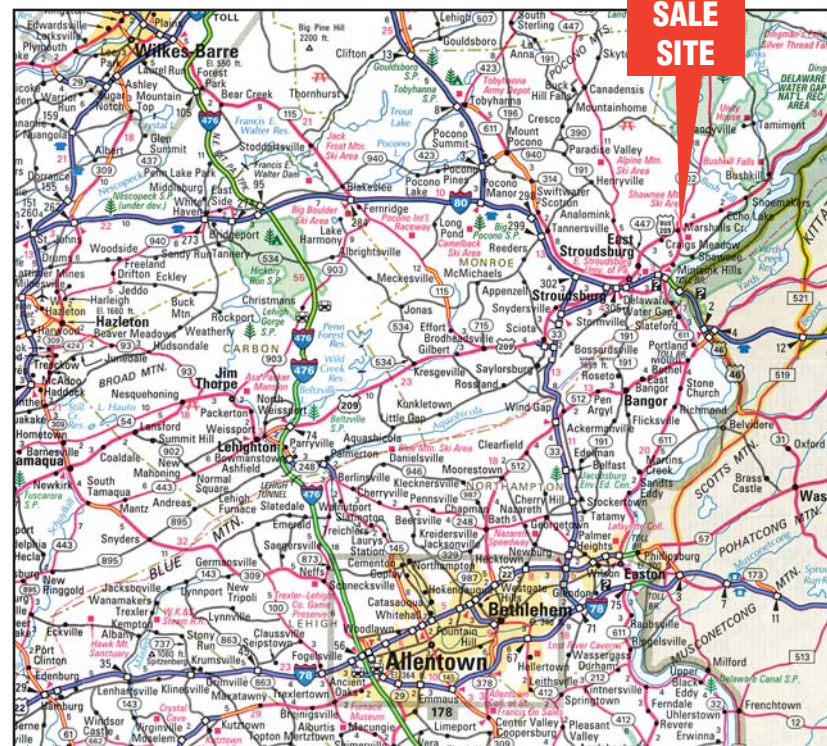
AIRPORT INFORMATION: The area is serviced both commercially and privately through Lehigh Valley International Airport. Rental cars are available.

MOTEL INFORMATION: The Shannon Inn (570) 424-1951 • **Marshalls Creek is located in the heart of the Pocono Mountains. There are numerous resorts and hotels. Please plan on attending and spending a day or two in the Poconos.**

PA AUCTION LICENSE NO: AY000281

TAG-A-LONG TRAILERS

1992 EAGER BEAVER Model 20HAL, 20 Ton Tandem Axle Tag-A-Long Trailer, equipped with 8'6"x19'6" level deck, 5' beavertail, 4'6" ramps, chain dogs, air brakes, 47,900# GVWR, and 215/75R17.5 tires. In good condition with fair tires.
1989 CENTERVILLE Model 105A, 20 Ton Tandem Axle Tag-A-Long Trailer, equipped with 8'x18' level deck, 4' beavertail, 5' ramps, chain dogs, 48,205# GVWR, and 8.25R15 tires. In good condition with good tires. (Organski)



ABSOLUTE AUCTION
PROJECT COMPLETION
Friday, November 16, 2007 - 9:00 A.M.

03 INGERSOLL RAND ECM580

PAER AHNERT ENTERPRISES, INC.
Marshalls Creek, PA (Stroudsburg Area)



'97 CAT D8R



(2) OF (3) CAT D300E



'07 SCHWING BPA500



1440 COWPATH RD. • HATFIELD, PA 19440
 215/361-9099 • Fax: 215/361-9212

PRE-SORTED
 FIRST CLASS MAIL
 US POSTAGE
PAID
 HAVERTOWN, PA
 PERMIT #45

END DUMPS



(1) of (3) Cat D300E



Cat D30D



Mack M30X

1998 CATERPILLAR Model D300E, 6x6 30 Ton Articulated End Dump, s/n 7FN00919, powered by Cat 3306B diesel engine and powershift transmission, equipped with heated body (not plumbed), supplemental steering, retarder, scissor tailgate, Lincoln quick lube system, air conditioning, and 23.5x25 tires. In good condition with fair tires. (Rear Suspension Rebuilt)

1998 CATERPILLAR Model D300E, 6x6 30 Ton Articulated End Dump, s/n 7FN00918, powered by Cat 3306B diesel engine and powershift transmission, equipped with heated body (not plumbed), scissor tailgate, Lincoln quick lube system, enclosed ROPS cab with air conditioning, and 23.5R25 tires. In good condition with fair to good tires. (Rear Suspension Rebuilt)

1997 CATERPILLAR Model D300E, 6x6 30 Ton Articulated End Dump, s/n 7FN00669, powered by Cat 3306B diesel engine and powershift transmission, equipped with heated body (not plumbed), enclosed ROPS cab with air conditioning, and 23.5R25 tires. In good condition with good tires.

CATERPILLAR Model D30D, 4x4 30 Ton Articulated End Dump, s/n 3AJ00258, powered by Cat 3306B diesel engine and powershift transmission, equipped with enclosed ROPS cab with Red Dot air conditioning and 29.5R25 tires. In fair to good condition with fair to good tires.

MACK Model M30X, 30 Ton End Dump, s/n 1461, powered by Detroit 8 cylinder diesel engine and direct drive transmission, equipped with Heil 24 cubic yard lined heated dump body, rock ejectors, and 18.00R25 tires. In fair to good condition with good tires. (E.F. Possinger)

TRENCH COMPACTOR



2003 WACKER Model RT82SC Vibratory Trench Compactor, s/n 5445094, powered by Lombardini 18.1HP diesel engine and hydraulic drive, equipped with 33" padfoot drums, hi & lo frequency vibration, and radio and umbilical remote. In good to very good condition. (097 Original Hours) (Purchased New)

'03 Wacker RT82SC

CONCRETE PUMPER TRUCK

2007 SCHWING Model BPA500 Concrete Pumper, s/n 171500594, powered by Deutz 72HP diesel engine, equipped with radio and wired remote controls, 200 gallon poly water tank, rated output of: 45 cubic yards per hour; 1100 PSI material pressure, 1,160 ft. horizontal pumping distance; 330 ft. vertical pumping distance, 1" max aggregate size; 11 cubic ft. hopper capacity; rock valve, agitator assembly, 5,200# pump weight, mounted on 1999 UD Model 1800CS Cab Over Single Axle Flatbed Truck, powered by Nissan diesel engine and automatic transmission, equipped with 13' flatbed, dual rear wheels, single frame, 6,830# front axle, 13,000# rear axle, 17,995# GVWR, air conditioning, and 215/75R17.5 tires. Concrete pump in excellent condition, UD carrier in good condition with good tires. (Pumper 008 Original Hours) (Commerce)



2007 SCHWING BPA500

PORTABLE CHIPPER, STRAWBLOWERS AND AIR COMPRESSOR



Vermeer BC1800A

VERMEER Model BC1800A Portable Chipper, powered by John Deere 115HP diesel engine, equipped with disc chipper, hydraulic loading winch, and Auto Feed II system, manual rotating chute, and 12x16.5 tires. In good to very good condition. (0,310 Original Hours) (2 Sets) Spare Knives



Finn B50

FINN Model B50 Portable Straw Blower, s/n BN1312, powered by Wisconsin 4 cylinder gas engine, equipped with B78x13 tires. In good condition with fair tires.

GOSSON Model BCG-2 Skid Mounted Straw Blower, s/n 1981, powered by Powertrain gas engine. In good condition. (E.F. POSSINGER)

INGERSOLL-RAND 100 CFM Portable Air Compressor, powered by Deutz diesel engine. In good condition with good tires. (E.F. POSSINGER)

DUMP TRUCKS



'97 Ford LTL9000

1997 FORD Model LTL9000 Tri-Axle Dump Truck, powered by Cat 3406C, 350HP diesel engine and Eaton Fuller 8LL transmission, equipped with R&S 17' steel dump body with air gate, single chute and manual tarp, 46,000# rears, 18,000# front axle, full locking rears, spring suspension, rear air outlets, and 425/65R22.5 front and 11R22.5 lift and rear tires. In good condition with fair to good tires.



'97 Peterbilt 330

2001 FREIGHTLINER Model FLD120 Tri-Axle Dump Truck, powered by Cat C-12 diesel engine and 8LL 10 speed transmission, equipped with 17' steel dump body, 46,000# rears. In good condition with good tires. (All Points Capital)

1997 PETERBILT Model 330 Pusher Tandem Axle Dump Truck, powered by Cat 250HP diesel engine and Eaton Synchro-6, 6 speed transmission, equipped with 13' steel dump body, (3) chutes, electric tarp and cab protector, airlift front axle, aluminum wheels, air ride seats, air conditioning, and 11R22.5 tires. In good condition with good tires. (Organski)

2000 FORD Model F-350XL Super Duty 4x4 Dump Truck, powered by Powerstroke 7.3L, V-8 diesel engine and 6 speed transmission, equipped with Galion 9' (2.3-3.4 cu.yd.) dump body with cab protector, rear hydraulic circuit, Western 9' uni-mount plow, tailgate spreader, tow package with electric, dual rear wheels, and 235/85R16 tires. In good condition with good tires.

1984 INTERNATIONAL Model 1654 Single Axle Dump Truck, powered by International 8 cylinder diesel engine and 5 speed transmission, equipped with 9' steel dump body, 9' hydraulic angle snowplow, 8' hydraulic salt spreader, and 9.00R20 tires. In fair to good condition with good tires. (E.R. Linde)



'00 Ford F-350XL 4x4

1986 INTERNATIONAL Model 1955 Single Axle Lube Truck, powered by International DT466 diesel engine and 5 speed transmission, equipped with 11'6" open lube body with tarp enclosure, Ingersoll-Rand horizontal gas powered air compressor, 600 gallon 4-compartment tank with 12 volt fuel pump and (3) pneumatic pumps, (3) 175 gallon 2-compartment tank with (2) pneumatic pumps, (8) hose reels, air hose reel, waste oil hose reel with pneumatic pump, work lights, and bumper vise, and 11R22.5 tires. In good condition with good tires. (E.R. Linde)



'86 International 1955

CRAWLER AND RUBBER TIRED LOADERS

1990 CATERPILLAR Model 963 LGP Crawler Loader, s/n 21Z03234, powered by Cat 3304 diesel engine and hydrostatic transmission, equipped with general purpose bucket with teeth, enclosed ROPS cab with heat, and 21.5" DBG pads. In good condition with fair to poor undercarriage. (Transmission Rebuilt Approx. 500 Hours Ago - Cleveland Bros.) (New Rod & Main Bearings, Turbo Injectors 600 Hours Ago)



'90 Cat 963LGP



'02 Terex SKL873

2002 TEREX Model SKL873 Rubber Tired Loader, s/n 873S/0175, powered by Perkins 5.9L diesel engine and powershift transmission, equipped with Schaeff 3 cubic yard loader bucket and enclosed ROPS cab. In good condition with good tires. (All Points Capital)

HOUGH Model H90-CM Rubber Tired Loader, s/n 27MC-02571, powered by Cummins 6 cylinder diesel engine and powershift transmission, equipped with Drott hydraulic 4-in-1 loader bucket, enclosed ROPS cab, and 16.00x24 tires. In good condition with fair to poor tires. (E.F. Possinger)

MOTOR SCRAPER



Cat 613

CATERPILLAR Model 613 Self Elevating Motor Scraper, s/n 71M3554, powered by Cat 3208 diesel engine and powershift transmission, equipped with ROPS over enclosed cab with light package, and 23.5x25 tires. In good condition with good tires. (Cat Rebuild Installed and Neck Rebuilt 1,256 Hours Ago) (Adamov)

BLASTHOLE DRILL



'03 Ingersoll Rand ECM580

2003 INGERSOLL-RAND Model ECM580 Crawler Blasthole Drill, s/n X004108AA, powered by Cummins 5.9L, 127KW diesel engine and hydraulic drive, equipped with Montabert HC80 drifter, telescopic boom, dust collection, anti-jam, reverse percussion, rod changer with (5) T45 drill steel, and enclosed ROPS cab with air conditioning. In good to very good condition. (Purchased New)

Spare 14' Drill Leader, Striking Bars, Bits, and Couplers

TRUCK TRACTORS AND LOWBOY AND DUMP TRAILERS



'92 Autocar

1992 AUTOCAR Tandem Axle Truck Tractor, powered by Volvo VE12, 12L, 360HP diesel engine and Volvo 13 speed transmission, equipped with Volvo 46,000# rears, 12,000# front axle, single frame, spring suspension, 2-stage Jake brake, full locking rears, wetline, heated mirrors, power passenger window, cruise control, air conditioning, and 11R24.5 tires. In good condition with good tires.

2000 PETERBILT Model 379 Tandem Axle Truck Tractor, powered by Cat C-15 diesel engine and Eaton Fuller 8LL transmission, equipped with 46,000# rears, wet-line, air conditioning, air suspension. (All Points Capital)

1999 TALBERT Model T3DW-509A-HRG-1-T1, 51 Ton Tri-Axle Lowboy Trailer, equipped with non ground bearing, hydraulic detachable gooseneck, 24'6"x8'6" load deck, 13' open over wheels, plus 3/minus 3 air ride suspension, airlift rear axle, outriggers, chain dogs, and 255/70R22.5 tires. In good condition with good tires. (Purchased New)

(2) **1998 SPECTEC 37' Tri-Axle Steel Dump Trailers**. In good condition with good tires. (All Points Capital)



'99 Talbert 51 Ton

SERVICE, LUBE, AND FUEL TRUCKS



'06 Ford F-550XL 4x4

2006 FORD Model F-550XL Super Duty 4x4 Service Truck, powered by Powerstroke 6.0L, V-8 diesel engine and 6 speed transmission, equipped with J&J 11' open service body with tarp and bows, AutoCrane 6406H, 6,400# 3-section service crane with radio remote, AutoCrane RS60AC hydraulic air compressor, 2006 Miller TrailBlazer 300 amp/10,000 watt welder/generator, powered by Kohler gas engine, (2) hydraulic stabilizers, 110 inverter, dual rear wheels, air conditioning, cruise control, AM/FM CD player, and 225/70R19.5 tires. In very good condition with very good tires. (005,946 Original Miles) (Purchased New)

1986 FORD Model C-8000 Cabover Single Axle Fuel Truck, powered by Cat 3208 diesel engine and Allison automatic transmission, equipped with Tech-Weld 2,000 gallon 2-compartment aluminum fuel body with double bulkhead, (2) pumps and hoses, dual rear wheels, and 10.00R20 tires. In good condition with good tires.



'86 Ford C8000 2,000 Gallon

ROLL-BACK AND FLATBED TRUCKS

1990 INTERNATIONAL Model 4600LP Single Axle Rollback Truck, powered by International DT466, 7.3L diesel engine and 5 speed transmission, equipped with Jerr-Dan 20' rollback body with winch, dual rear wheels, and 245/70R19.5 tires. In good condition with good tires.



'90 International 4600LP

1988 CHEVROLET Model 3500, 4x4 Flatbed Truck, powered by V-8 gas engine and automatic transmission, equipped with 8' flatbed with side toolboxes, Western 8'6" snowplow, and 245/75R16 tires. In fair condition with fair tires.



'88 Chevrolet 3500 4x4

(New Brakes, New Front Axle Assembly)