



1440 Cowpath Rd. • Hatfield, PA 19440 • 800-233-6898 • Fax: 215-361-9212

NOTICE: For over (35) years, William Bowman Associates has provided Southern New Jersey and the surrounding markets with the finest infrastructure related construction services in the residential housing markets and land development projects, maintaining an exemplary reputation toward customer commitment and quality of work. However, due to the changing housing market, Bowman and their creditors have decided the prudent path is a Chapter 11 - Liquidation of all assets, under the US Bankruptcy Code 363, filed in the District of New Jersey. All items will sell at absolute auction to the highest bidder regardless of price, with the exception of certain creditors' (8) items, which must be offered with reserve in accordance with Federal Bankruptcy regulations.

LOCATION: The auction will be held at the William Bowman Associates facility located at 551 Cooper Road, West Berlin, New Jersey 08091

***BANKRUPTCY NOTICE:** Pursuant to United States Bankruptcy Court, Chapter 11 Code 363, Case No. 07-10441, certain creditors have exercised their right to "credit bid" their level of indebtedness. These (8) items will sell "Subject to Creditor's Immediate Confirmation" and are so noted within the description. We feel these creditors remain over-secured and the level of indebtedness and reserve prices are reasonable. Please contact the auction company for details regarding these items to be sold subject to confirmation. All other assets must sell to the highest bidder regardless of price.

AUCTIONEER'S NOTE: Please understand that Hunyady Auction Company has done everything in our power to avoid the issue of credit bidding on certain items. However, we must observe the rights of those creditors in a United States Bankruptcy proceeding. Our good customers understand that this is not a practice that Hunyady Auction Company condones and we do everything possible to ensure all items sold at our auctions are sold "Absolute" without minimums or reserves. Please do not let this issue, of reserved items, discourage your attendance of this fine auction, as we feel the reserve prices are below market value.

RAPID BIDDERS: Please remember to bypass the registration lines and proceed directly to the settlement office, your sale day catalogs will be ready for pickup.

TERMS: Payment in full is required on sale day by cash, certified funds, or check with a bank letter of guarantee. Sample letter of guarantee: "We hereby guarantee the payment of our customer _____ written on his account up to \$ _____ dollars for purchases at your auction sale on October 11, 2007." All guaranteed checks should be made payable to Hunyady Auction Co. **Never A Buyer's Premium!**

INSPECTION: Items will be available for inspection beginning Monday, October 8th from 8:00 a.m. until 5:00 p.m. or sale day morning from 7:00 a.m. until 9:00 a.m. Should special inspection arrangements be needed, please contact the auction company.

REMOVAL: After complete payment, all sale items may be removed on sale day as long as the removal activity is not disruptive to the sale and only until 5:00 p.m. Items may also be removed Friday, October 12, and Monday, October 15 thru Thursday, October 18, 2007 from 8:00 a.m. until 5:00 p.m. All items must be removed no later than Thursday, October 18, 2007 at 5:00 p.m.

SALE SITE DIRECTIONS: FROM NEW JERSEY TURNPIKE AND/OR I-295 IN NEW JERSEY: Use either Exit # 4 of the NJ Turnpike or Exit # 36A of I-295, and proceed to Route 73 South. Continue on Rt. 73 South approximately (8) miles and turn Left, at traffic light, onto Cooper Road South. (You are permitted to turn left from Rt. 73 without using All-Turns area, so stay in left lane as you approach) Proceed on Cooper Road South for (2.1) miles to the sale site on the left. **FROM PA TURNPIKE:** Follow PA Turnpike East, to the end, and cross the connector bridge into New Jersey. After exiting the toll booth, continue approximately (1.0) mile and exit onto Route 130 North (Bordentown) Follow Rt. 130 North to 1st traffic light and turn Right onto Florence-Columbus Road. Continue (1.8) miles and exit onto I-295 South. Continue on I-295 South and use Exit #36A. Follow the above directions.

AIRPORT INFORMATION: The area is serviced commercially through the Philadelphia International Airport. The area is serviced privately from Camden County Airport (19N) located in Berlin, NJ. Telephone: (856) 767-1233 or (800) 453-4574. Rental cars are available.

MOTEL INFORMATION: The largest selection of accommodations is at the Interstate 295 interchange, Exit #36A (Berlin) and continuing on Route 73 South. These hotels are (8 to 10) miles from the sale site: Wyndham Mount Laurel (856) 234-7000 (Auction Headquarters) • Marriott (856) 234-7300 • Marriott Courtyard (856) 273-4400 • Fairfield (856) 642-0600 • The Laurel Inn (856) 235-7400; However there are several other accommodations within close proximity to the site, to include: Holiday Inn Express (West Berlin) (856) 767-7711 • Hampton Inn (Voorhees) (856) 346-4500 • Wingate Inn (Voorhees) (856) 627-1000

PA AUCTION LICENSE NO: AY000281

SALE SITE PHONE NUMBER (856) 626-3605 (BEGINNING OCTOBER 1) • SALE SITE FAX NUMBER (856) 753-7833

CONTRACTORS TOOLS

MUELLER B-101 Pipe Tap • (2) **MUELLER** B-100 Pipe Taps • **RICE** Hydrostatic Test Pump • (4) 16"-24" Inflatable Pipe Test Plugs • (4) Soil Pipe Cutters • **RIDGID** 300 Power Threader • **RIDGID** Tri-Stand • **RIDGID** 700 Hand Power Threader • **SCHONSTEDT** Magnetic Locator • (6) **MBW & MIKASA** Gas Powered Plate Compactors • (6) **MBW** R270 Gas Powered Foot Compactors • (9) 3" Gas Powered Trash Pumps • (2) 2" Gas Powered Trash Pumps • (3) **HOMELITE** 3" Gas Powered Diaphragm Pumps • 2" Gas Powered Diaphragm Pump • 2" Gas Powered Centrifugal Pump • 30#, 60# and 90# Paving Breakers • (4) Gas Powered Demo Saws • Pneumatic Backfill Tamper • **MULTIQUIP** 5,000 Watt Generator • **HONDA** EB3800, 3800 Watt Gas Powered Generator • Gas Powered Snow Thrower • All Thread • Hand Tools • Miscellaneous Hardware • Bolt Bins & Contents • Hardware Cabinets • Assorted **CAT** Parts • Starters & Alternators • Truck Parts • Hydraulic Hoses & Belt • Light Duty Truck Parts

SHOP TOOLS

OTC Track Press • **BRIDGEPORT** Milling Machine • Shop Lathe • **AMMCO** Brake Lathe with twin facing tool • **WHITE IND.** Refrigerant Recovery Recycling Center • **COATS** 40-40SA Tire Machine • **LINCOLN** Square Wave Tig 275 Tig Welder • Static Tire Balancer • **MILLER** Mig 250 Mig Welder with wire feeder • **MILLER** CP-302 Power Source with Miller 22A wire feeder • **HOBART** M-300, 300 Amp Stick Welder • **MILLER** SRH-222, 250 Amp Stick Welder • (5) Oxygen/Acetylene Torch Kits • Steel Welding/Fab Table • C-Lamps & Welding Screens • Portable Engine Hoist • Engine Stand • 1,000# Engine Stand • **NAPA** 14,000# Pneumatic Bumper Jack • Pneumatic Bumper Jack • (2) 20 Ton Floor Jacks • (4) Light Duty Shop Floor Jacks • (4) **CAT** 20 Ton Jack Stands • (8) Jack Stands • 50 Ton Bottle Jack • 1" Torque Multiplier • 1" Torque Wrench • 3/4" and 1" Impact Sockets • **JET** 13R, 1/2" Bench Top Drill Press • **BLACK & DECKER** Abrasive Chop Saw • 4.5" Grinders • (2) 6 Ton Chain Hoists • 1,000# Chain Fall • Assorted Rigging & Lifting Chains • Parts Washer • (11) 55 Gallon Drums of Lubricant with manual pumps • (2) Pneumatic Lubers • Barrel Cart • (4 Sections) Pallet Racking • (3) Tables with vises • Rolling Stairs • (2) Fiberglass Ladders



ABSOLUTE AUCTION[®]

COMPLETE LIQUIDATION

THURSDAY, OCTOBER 11, 2007 - 9:00 A.M.



'05 KOMATSU PC400LC-7L AND '03 CAT 345BL SERIES II



'01 WESTERN STAR AND '97 TALBERT 70 TON



'04 FORD F-650XL SERVICE TRUCKS



1440 COWPATH RD. • HATFIELD, PA 19440
215/361-9099 • Fax: 215/361-9212

PRE-SORTED
FIRST CLASS MAIL
US POSTAGE
PAID
HAVERTOWN, PA
PERMIT #45



HYDRAULIC EXCAVATORS AND ATTACHMENTS



05 Komatsu PC400LC-7L

2005 KOMATSU Model PC400LC-7L Hydraulic Excavator, s/n A86370, Komatsu diesel and hydraulic drive, 11' dipper stick, Esco 42" digging bucket, Galeo package, air conditioning, 17'6" crawlers, and 35.5 TBG pads. In good condition with good undercarriage. (Offered Subject To Creditor's Immediate Confirmation-Please Refer To Bankruptcy Notice On Rear Panel)



03 Cat 345BL Series II

2003 CATERPILLAR Model 345BL Series II Hydraulic Excavator, s/n AGS01959, Cat 3176, 439HP diesel and hydraulic drive, 12'6" dipper stick, Cat 48" digging bucket, air conditioning, 17'9" crawlers, and 35.5" TBG pads. In good condition with good undercarriage. (Offered Subject To Creditor's Immediate Confirmation-Please Refer To Bankruptcy Notice On Rear Panel)

2000 KOMATSU Model PC600LC-6K Hydraulic Excavator, s/n 10104, Komatsu diesel and hydraulic drive, 11'3" dipper stick, 48" digging bucket, JRB hydraulic quick coupler, 18'9" crawlers, and 35.5 TBG pads. In good condition with good undercarriage.

2002 CATERPILLAR Model 330CL Hydraulic Excavator, s/n DKY00695, Cat C-9, 247HP diesel and hydraulic drive, 12'9" dipper stick, 48" digging bucket, Cat quick coupler, air conditioning, 16'6" crawlers, and 33.5" TBG pads. In good condition with good undercarriage. (Offered Subject To Creditor's Immediate Confirmation-Please Refer To Bankruptcy Notice On Rear Panel)

2001 KOMATSU Model PC300LC-6LE Hydraulic Excavator, s/n A84582, Komatsu diesel and hydraulic drive, 10' dipper stick with hydraulic beyond and stiff arm bracket, Esco 48" digging bucket, JRB hydraulic quick coupler, 16'4" crawlers, and 31.5 TBG pads. In good condition with good undercarriage.

2001 KOMATSU Model PC150LC-6K Hydraulic Excavator, s/n K32359, Komatsu diesel and hydraulic drive, 8'6" dipper stick, Esco 36" digging bucket, 13'4" crawlers, and 23.5 TBG pads. In good condition with good undercarriage.

ATTACHMENTS: LABOUNTY 5-Tine Grapple (PC300) Digging Buckets: PC400 – ESCO 68"; 60"; (2) 30" • PC600 – BATEMAN 36" • PC300 – ESCO 54" • GEITH 24" • Cat 235 – (2) 48" • 24"



00 Komatsu PC600LC-6K



02 Cat 330CL



01 Komatsu PC300LC-6LE



01 Komatsu PC150LC-6K

CRAWLER TRACTORS AND CRAWLER LOADER

2004 JOHN DEERE Model 650H-LGP Crawler Tractor, s/n 939691, John Deere diesel and powershift trans, 6-way straight blade, ROPS canopy, and 27.5" TBG pads. In good condition with good undercarriage. (Offered Subject To Creditor's Immediate Confirmation-Please Refer To Bankruptcy Notice On Rear Panel)



04 John Deere 650H-LGP

2002 KOMATSU Model D65PX-12 Crawler Tractor, s/n 65265, Komatsu diesel and powershift trans, straight blade with tilt, ROPS over enclosed cab with air conditioning, and 36" SBG pads.

In good condition with good undercarriage. **2001 KOMATSU Model D61PX-12 Crawler Tractor**, s/n B1685, Komatsu diesel and powershift trans, 6-way straight blade, ROPS over enclosed cab with air conditioning, drawbar, and 33.5" SBG pads. In good condition with fair to good undercarriage.

2001 KOMATSU Model D61PX-12 Crawler Tractor, s/n B1569, Komatsu diesel and powershift trans, 6-way straight blade, ROPS over enclosed cab, drawbar, and 34" SBG pads. In good condition with good undercarriage.

2004 CATERPILLAR Model D4G LGP Crawler Tractor, s/n TLX00395, Cat 3046 diesel and powershift trans, 6-way straight blade, joystick steering, enclosed ROPS cab with air conditioning, and 25" SBG pads. In good condition with fair undercarriage.



01 Komatsu D61PX-12 sn B1685

2001 KOMATSU Model D61PX-12 Crawler Tractor, s/n B1569, Komatsu diesel and powershift trans, 6-way straight blade, ROPS over enclosed cab, drawbar, and 34" SBG pads. In good condition with good undercarriage.

2004 CATERPILLAR Model D4G LGP Crawler Tractor, s/n TLX00395, Cat 3046 diesel and powershift trans, 6-way straight blade, joystick steering, enclosed ROPS cab with air conditioning, and 25" SBG pads. In good condition with fair undercarriage.

2004 CATERPILLAR Model D4G LGP Crawler Tractor, s/n TLX00395, Cat 3046 diesel and powershift trans, 6-way straight blade, joystick steering, enclosed ROPS cab with air conditioning, and 25" SBG pads. In good condition with fair undercarriage.

04 Cat D4G LGP sn TLX00395

2004 CATERPILLAR Model D4G LGP Crawler Tractor, s/n TLX00508, Cat 3046 diesel and powershift trans, 6-way straight blade, enclosed ROPS cab with air conditioning, and 25" SBG pads. In good condition with fair undercarriage. (Offered Subject To Creditor's Immediate Confirmation-Please Refer To Bankruptcy Notice On Rear Panel)

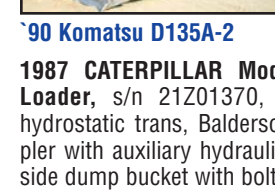


04 Cat D4G LGP sn TLX00508

1999 CATERPILLAR Model D4C LGP Series III Hystat Crawler Tractor, s/n 4LS00427, Cat 3046 diesel and hydrostatic trans, 6-way straight blade, ROPS canopy with heat, and 25" SBG pads. In good condition with good undercarriage. (Offered Subject To Creditor's Immediate Confirmation-Please Refer To Bankruptcy Notice On Rear Panel)

1990 KOMATSU Model D68E-1 Crawler Tractor, s/n B1094, Komatsu diesel and powershift trans, semi-U blade with tilt, ROPS canopy, drawbar, and 24" SBG pads. In fair to poor condition with fair undercarriage.

1990 KOMATSU Model D135A-2 Crawler Tractor, s/n 10346, Komatsu diesel and powershift trans, semi-U blade, ROPS over enclosed cab with air conditioning, rear counterweights, drawbar, and 24" SBG pads. In fair to good condition with fair to good undercarriage.



90 Komatsu D135A-2

1987 CATERPILLAR Model 963 LGP Crawler Loader, s/n 21Z01370, Cat 3304 diesel and hydrostatic trans, Balderson hydraulic quick coupler with auxiliary hydraulics, Balderson hydraulic side dump bucket with bolt-on cutting edge, ROPS canopy, and 21.5" DBG pads. In good condition with good undercarriage. (Pins Turned - Cat Rails) **BALDERSON 56" Fork Attachment (Fits Cat 963) • MANN 10' Root Rake • 5 & 6 Spade Bottom Plows with transport wheels**

87 Cat 963 LGP

RUBBER TIRED LOADERS AND ATTACHMENTS



02 Komatsu WA380-3MC sn A51532



02 Komatsu WA380-3MC sn A51533



01 Komatsu WA320-3MC

2002 KOMATSU Model WA380-3MC Rubber Tired Loader, s/n A51532, Komatsu/Cummins 8.3 liter diesel and powershift trans, JRB hydraulic quick coupler with 3rd valve, JRB 3.25 cubic yard hydraulic side dump bucket, enclosed ROPS cab with air conditioning, and 23.5R25 tires. In good condition with good tires.

2002 KOMATSU Model WA380-3MC Rubber Tired Loader, s/n A51533, Komatsu/Cummins diesel and powershift trans, JRB hydraulic quick coupler with 3rd valve, JRB 3.25 cubic yard hydraulic side dump bucket, enclosed ROPS cab with air conditioning, and 23.5R25 tires. In good condition with good tires.

2001 KOMATSU Model WA320-3MC Rubber Tired Loader, s/n A31512, Komatsu/Cummins 8.3 liter diesel and powershift trans, JRB hydraulic quick coupler with 3rd valve, JRB 2.5 cubic yard hydraulic side dump bucket, enclosed ROPS cab with air conditioning, and 20.5R25 tires. In good condition with good tires.

1997 KOMATSU Model WA180-1 Rubber Tired Loader, s/n A76417, Komatsu 610T diesel and powershift trans, JRB hydraulic side dump bucket, hydraulic quick coupler, 3rd valve, enclosed ROPS cab, and 17.5x25 tires. In fair to good condition with fair to good tires.

1989 CATERPILLAR Model 966E Rubber Tired Loader, s/n 99Y06399, Cat 3306 diesel and powershift trans, Balderson hydraulic quick coupler with 3rd valve, Balderson hydraulic side dump bucket, ROPS over enclosed cab, and 26.5R25 tires. In good condition with good tires.

1988 CATERPILLAR Model 950E Rubber Tired Loader, s/n 65R03418, Cat 3304 diesel and powershift trans, general purpose loader bucket with teeth, ROPS over enclosed cab with air conditioning, and 23.5R25 tires. In good condition with good tires.

ATTACHMENTS: (2) JRB 70" Fork Attachments • JRB 60" Fork Attachment • BALDERSON 60" Fork Attachment • JRB A180, 58" Fork Attachment (Fits WA180) • Hydraulic Side Dump Bucket (Fits Komatsu WA380) • Side Dump Bucket (Parts - No Hydraulics)



97 Komatsu WA180-1



89 Cat 966E



88 Cat 950E

MOTOR SCRAPERS, MOTOR GRADER, AND WATER WAGON



98 Cat 613C Series II



97 Cat 613C Series II



89 Cat 12G



80 Cat 623B 7,000 Gallon

1998 CATERPILLAR Model 613C Series II Elevating Motor Scraper, s/n 8LJ01690, Cat 3116 diesel and powershift trans, supplemental steering, enclosed ROPS cab with air conditioning, and 23.5R25 tires. In good condition with very good front and fair to good rear tires.

1997 CATERPILLAR Model 613C, Series II Elevating Motor Scraper, s/n 8LJ01497, Cat 3116 diesel and powershift trans, supplemental steering, enclosed ROPS cab with air conditioning, and 23.5R25 tires. In good condition with fair to good tires.

1989 CATERPILLAR Model 12G Articulated Motor Grader, s/n 61M12979, Cat 3306 diesel and 6 speed powershift trans, 12'all hydraulic moldboard, rear multi-shank ripper, front push block, enclosed ROPS cab with air conditioning, and 15.5x25 tires. In good condition with fair to good tires.

1980 CATERPILLAR Model 623B Water Wagon, s/n 46P1527, Cat 3406 PC diesel and powershift trans, approximately 7,000 gallon shopmade water tank, (2) rear air actuated spray heads, cab controls, rear hose and reel, ROPS canopy, and 29.5x35 tires. In good condition with good tires.

ARTICULATED END DUMPS



00 Cat D300E Series II 6x6

2000 CATERPILLAR Model D300E Series II, 30 Ton, 6x6 Articulated End Dump, s/n 5KS00537, Cat diesel and powershift trans, supplemental steering, heated body (not plumbed), air conditioning, and 23.5R25 tires. In good condition with fair to good tires.

1998 VOLVO Model A30C, 30 Ton, 6x6 Articulated End Dump, s/n A30CV60066, Volvo diesel and powershift trans, air conditioning and 23.5R25 tires. In good condition with good tires. (Offered Subject To Creditor's Immediate Confirmation-Please Refer To Bankruptcy Notice On Rear Panel)



98 Volvo A30C 6x6

VIBRATORY COMPACTORS AND WALK BEHIND ROLLERS

2001 INGERSOLL RAND Model SD-115D ProPac Vibratory Compactor, s/n 165355, Cummins B5.9C, 5.9 liter diesel and hydrostatic trans, 84" smooth drum, drum drive, ROPS canopy, and 23.1x26 tires. In good condition with good tires.



'01 Ingersoll Rand SD-115D

1998 INGERSOLL RAND Model SD-115D ProPac Vibratory Compactor, s/n 154281, Cummins 5.9 liter diesel and hydrostatic trans, 82.5" smooth drums, drum drive, ROPS canopy 23.1x26 tires. In good condition with fair to good tires.



'98 Ingersoll Rand SD-115D

1997 INGERSOLL RAND Model SD-115D ProPac Vibratory Compactor, s/n 149186, Cummins 5.9 liter diesel and hydrostatic trans, 84" smooth drum, drum drive, ROPS canopy, and 23.1x26 tires. In good condition with good tires.



'97 Ingersoll Rand SD-115D

1989 INGERSOLL RAND Model SD-70D Vibratory Compactor, s/n 5071S, Cummins 4-53 diesel and hydrostatic trans, 66" smooth drum, drum drive, ROPS canopy, and 14.9x24 tires. In good condition with good tires.



'89 Ingersoll Rand SD-70D

1990 SAKAI Model SV200TB Vibratory Padfoot Compactor, s/n VSV3T-10126, 4 cylinder diesel and hydrostatic trans, 49" padfoot drum with drum cleaners, drum drive, 66" backfill blade, and 11.2x20 tires. In good condition with fair tires.



(1) of (4) Bomag BW75AD

1998 BOMAG Model BW75AD Walk Behind Vibratory Roller, s/n 101480310297, Economag diesel and hydrostatic trans, 30" smooth drums and water system with front and rear spray. In good condition.

1997 BOMAG Model BW75AD Walk Behind Vibratory Roller, s/n 101480310198 (Parts Only)

FELLER BUNCHER

1987 HYDRO-AX Model 621 Feller Buncher, s/n 2197, Detroit 4-53 Turbo diesel and hydrostatic trans, hydraulic quick coupler, Feller Buncher axe, enclosed ROPS cab with air conditioning, rear sweeps, and 28Lx26 forestry tires. In good condition with good tires. **ATTACHMENTS:** 8' rotary axe brush cutter • 12" hydraulic stump grinder.



'87 Hydro-Ax 621

ASPHALT PAVER, MILLING MACHINE, AND ROLLERS

1998 CATERPILLAR/BARBER GREENE Model BG-245C Crawler Asphalt Paver, s/n 4XN00116, Cat 3116 diesel and hydrostatic trans, Cat/B-G Extend-A-Mat 10-20B, 10'-20' hydraulic extendable heated screed, auto grade and slope controls, crown control, washdown system, 14" poly pads. In good condition with good undercarriage.



'98 Barber Greene BG-245C

1998 CMI Model PR-525 Roto Mill Crawler Milling Machine, s/n 540120, Cat 3408 diesel and hydraulic drive, 72" cutter drum, 36" collecting conveyor, 30"x26' discharge conveyor, (3) 6' crawlers with 14" TBG pads, and water system. In good condition with good undercarriage.



'98 CMI PR-525

1988 INGERSOLL RAND Model DD-90 Tandem Vibratory Roller, s/n 5477-S, Cummins 4BTA-3.9 diesel and hydrostatic trans, 62" smooth drums and water system with front and rear spray. In good condition.

1999 INGERSOLL RAND Model DD-32 Vibratory Roller, s/n 158929, Deutz F3L1011F diesel and hydrostatic trans, 48" smooth drums, water system, and ROPS post. In fair to good condition.



'88 Ingersoll Rand DD-90



'99 Ingersoll Rand DD-32

TRACTOR LOADER BACKHOES AND ATTACHMENTS

2000 CATERPILLAR Model 426C-IT, 4x4 Tractor Loader Extend-A-Hoe, s/n 1YR02147, Cat Turbo diesel and shuttle trans, general purpose loader bucket, 24" digging bucket, front quick coupler with 3rd valve, ride control, and enclosed ROPS cab. In good condition with fair to good tires.



'00 Cat 426C-IT 4x4 Extend-A-Hoe

1996 CATERPILLAR Model 416B, 4x4 Tractor Loader Extend-A-Hoe, s/n 8ZK09543, Cat diesel and shuttle trans, general purpose loader bucket with bolt-on cutting edge, 24" digging bucket, enclosed ROPS cab, 12.5/80x18 front and 19.5Lx24 rear tires. In fair to good condition with fair to good tires.



(1) of (2) '96 Cat 416B 4x4

1996 CATERPILLAR Model 416B, 4x4 Tractor Loader Backhoe, s/n 8ZK08612, Cat diesel and shuttle trans, general purpose loader bucket with bolt-on cutting edge, 22" digging bucket, enclosed ROPS cab, 12.5/80x18 front and 19.5L-24 rear tires. In good condition with fair tires.



'92 Cat 416B

1992 CATERPILLAR Model 416B Tractor Loader Backhoe, s/n 8SG01052, Cat 3054 diesel and shuttle trans, 24" digging bucket with hydraulic thumb, ROPS canopy, 11L-16 front and 19.5L-24 rear tires. In fair condition with fair tires.

ATTACHMENTS: Fork Attachment (426C-IT) • Digging Buckets: (3) 24" • 18" • 12"

SKID STEER LOADER AND UTILITY TRACTORS

1995 BOBCAT Model 853H Skid Steer Loader, s/n 512818830, Isuzu diesel and hydrostatic trans, Hi-Flow hydraulics, 67" general purpose loader bucket, ROPS canopy, and 12x16.5NHS tires. In good condition with fair to good tires. **MELROE 18" cold planer attachment, MELROE Model Sweeper 60, 60" Hydraulic Broom with hopper FORD Model Utility Broom Tractor**, s/n Unknown, Ford diesel and direct drive trans, MB 66" hydraulic broom with power angle, live PTO, water tank. In fair to good condition with fair to good tires.



'95 Bobcat 853H

FORD Utility Tractor, s/n Unknown, Powered by diesel, 3-point hitch and 5' brush hog. In fair condition.

ROUGH TERRAIN CRANE AND FORKLIFT

AUSTIN WESTERN Model 409, 9 Ton Rough Terrain Crane, s/n S-10652, Detroit 4-53 diesel and direct drive trans, 3-section hydraulic boom, single winch, 2-sheave hook block, 4-wheel steer, and 14.00x24 tires. In fair condition with fair tires.

1975 CATERPILLAR Model T50B, 5,000# Solid Tired Forklift, s/n 12N1979, propane gas and shuttle trans, 3-stage mast and 42" forks. In fair to good condition.

Austin Western 9 Ton



DUMP TRUCKS

2005 KENWORTH Model T300 Single Axle Dump Truck, Cat C-7, 300HP diesel and Eaton Fuller FR011210C, 10 speed trans, Beau-Roc 10' Steel Dump with single chute, air brakes, snowplow package, tow package with air, w/ 10' Blade, hyd tailgate spreader, air conditioning, cruise control, power windows, 11R22.5 tires, and 33,000# GVWR. In good condition with good tires.



'05 Kenworth T300

2003 WESTERN STAR Model 4984FA Tri-Axle Dump Truck, Cat C-15, 475HP diesel and Eaton Fuller 8LL, Florig 17'6" heated steel dump body with power tarp, air gate, single chute, 46,000# rears, 18,000# front axle, 3-stage brake, air conditioning, cruise control, power windows and mirrors, aluminum front Buds, 315/80R22.5 front and lift axle tires, 11R24.5 rear tires, and 82,000# GVWR. In good condition with good tires.



'03 Western Star

2001 KENWORTH Model T800 Tri-Axle Dump Truck, Cat C-15, 475HP diesel and Fuller RTL018918B, 18 speed trans, Bi-Beau 17' steel dump body with air gate, power tarp, single chute, 46,000# rears, 18,740# front axle, 22,500# lift axle, engine brake, walking beam suspension, aluminum Buds, air cab, air seat, air conditioning, cruise control, heated mirrors, 385/65R22.5 front and lift axle tires, 11R24.5 rear tires, and 87,240# GVWR. In good condition with fair to good tires. (Transmission Problems)



'01 Kenworth T800

1998 MACK Model R688S Tri Axle Dump Truck, Mack E7-350 diesel and Eaton Fuller 8LL, J&J 17' heated steel dump body with (2) chutes and power tarp, 18,000# front and 44,000# rear axles, 20,000# lift axle with 385/65R22.5 tires, spring suspension, Jake brake, air conditioning, heated mirrors, and 285/65R22.5 front and 11R24.5 rear tires. In good condition with good tires.

'98 Mack R688S



TRUCK TRACTORS AND LOWBOY TRAILERS

2004 WESTERN STAR Model 4984EX Tri-Axle Truck Tractor, Cat C-15, 475HP diesel and Eaton Fuller 8LL, 10 speed trans, 50,000# rears, 20,000# lift axle, 16,000# front axle, 230" wheelbase, wetline kit, air slide 5th wheel, 3-stage brake, double frame, Diamond plate fenders, headache rack, toolboxes, aluminum front Buds, single 95 gallon aluminum fuel tank, air conditioning, cruise control, power windows, heated mirrors, 315/80R22.5 front tires, 11R24.5 rear tires, and 275/70R22.5 lift axle. In good condition with good tires.



'04 Western Star

2001 WESTERN STAR Model 4964EX Tri-Axle Truck Tractor, Cat C-15, 475HP diesel and Eaton Fuller 8LL, RTO16908LL, 10 speed trans, 48,000# rears, 20,000# lift axle, 16,000# front axle, 228" wheelbase, wetline kit, air slide 5th wheel, double frame, 3-stage brake, Diamond plate fenders, toolboxes, front aluminum Buds, twin 71 gallon aluminum fuel tanks, air conditioning, cruise control, power windows, heated mirrors, 315/80R22.5 front tires, 11R24.5 rear tires, and 295/75R22.5 lift axle. In good condition with good tires. (Offered Subject To Creditor's Immediate Confirmation-Please Refer To Bankruptcy Notice On Rear Panel)



'01 Western Star

1997 TALBERT Model T3DW-70-HRG-T1, 70 Ton Tri-Axle Lowboy Trailer, non-ground bearing hydraulic detachable gooseneck, 25'6"x9'11" drop side load deck, 12' deck over wheels, walking beam suspension, chain dogs, 315/80R22.5 tires, and 175,740# GVWR. In good condition with very good tires.



'97 Talbert 70 Ton

2000 TALBERT Model T(4)DW-55SA-HRG-1-T1EC3/1, 55 Ton Tri-Axle Lowboy Trailer, non-ground bearing hydraulic detachable gooseneck, 23'6"x8'6" load deck, 12' deck over wheels, air ride suspension, 4th axle hook-up, chain dogs, outriggers, 275/70R22.5 tires, and 134,940# GVWR. In good condition with good tires.



'04 Western Star with '00 Talbert 55 Ton

1984 TALBERT 60 Ton Tri-Axle Lowboy Trailer, non-ground bearing hydraulic detachable gooseneck, 23'6"x8' drop side load deck, 12' deck over wheels, walking beam suspension, chain dogs, outriggers, and 10,00R15 tires. In good condition with good tires.



'84 Talbert 60 Ton

FUEL AND WATER TRUCKS

1998 FORD Model L8500 Single Axle Fuel Truck, Cummins 8.3C, 225HP diesel (Cummins Recon 2005) and Allison automatic trans, Allied 2,500 gallon aluminum fuel body, hose reel and meter, air brakes, air conditioning. In good condition.



'98 Ford L8500 with Allied Fuel Body

1986 FORD Model LN8000 Single Axle Fuel Truck, Cat 3208 diesel (Cat Reman) and 5+2 trans, 3,000 gallon aluminum fuel body with hose reel and meter, work lights, air brakes, and 12R22.5 tires. In good condition.

1987 AUTOCAR (Volvo/White) Tandem Axle Water Truck, Cummins NTC400BC3, 400HP diesel and Fuller 8LL, Allied 3,100 gallon aluminum water body, hydraulic discharge pump, rear air actuated spray heads, 12R24.5 tires, and 80,000# GVWR. In fair to good condition. (Off-Road Use Only)



'87 Autocar with Allied 3,100 Gallon Water Body

1984 FORD Model LN8000 Single Axle Water Truck, Cat 3208 diesel, 5+2 trans, Farrell 2,000 gallon aluminum water body, rear spray bar. In fair condition with fair to good tires. (Off-Road Use Only)

1978 FORD Model 8000 Tandem Axle Water Truck, Cat 3208 diesel and 8 speed trans with lo, 3,000 gallon Shopmade water body, rear air actuated spray heads, PTO discharge pump. In fair condition. (Off-Road Use Only)

SERVICE, LUBE, AND UTILITY TRUCKS

2004 FORD Model F-650XL Super Duty Single Axle Quad Cab Service Truck, Cat 3126 diesel and 7 speed trans, Curry Supply 11' service body with 24" work station bumper, Stellar model 6620/WFLIP, 6,000# hydraulic service crane, s/n GBX03187, with 10'9"-20'9" 3-section boom and (2) hydraulic outriggers, Vanair model 60 Viking 150CFM PTO powered air compressor, Getec model 250-5.5, 250 amp/5500 watt welder/generator, oxygen/acetylene torch set, air conditioning, cruise control, 245/70R19.5 tires, and 24,000# GVWR. In good to very good condition with fair tires.



04 Ford F-650XL

2004 FORD Model F-650XL Super Duty Single Axle Quad Cab Service Truck, Cat 3126 diesel and 7 speed trans, Curry Supply 11' service body, s/n 901031, with 24" work station bumper, Stellar model 6620, 6,000# hydraulic service crane with 3-section boom and (2) hydraulic outriggers, Vanair model 60 Viking 150CFM PTO powered air compressor, Getec model 250-5.5, 250 amp PTO powered welder, air conditioning, 245/70R195 tires, and 24,000# GVWR. In good condition with good tires.



04 Ford F-650XL

2000 CHEVROLET Model 7000 Single Axle Van Body/Lube Truck, Cat 3126, 190HP diesel and 6 speed trans, Supreme 22' refrigerated van body (set up for lube), (6) 55 gallon product tanks with pneumatic pumps, (6) hose reels, EVAC system with 300 gallon poly tank, IMT hydraulic air compressor, Thermo-King KD-II cooling unit, curbside doors, air conditioning, 11R22.5 tires, and 25,950# GVWR. In good condition with good tires.

2005 FORD Model F-350XL Super Duty 4x4 Service Truck, Powerstroke 6.0L diesel and automatic trans, Reading 9' open utility body, IMT model DA435HA, PTO powered air compressor, air conditioning, dual rear wheels, and 235/85R17 tires. In good to very good condition with fair tires.



05 Ford F-350XL 4x4

1999 FORD Model F-350XL Super Duty, 4x4 Utility Truck, Powerstroke 7.3 liter gas and automatic trans, Stahl 9' open utility body with ladder rack, 16" service bumper with vise, gas powered generator, dual rear tires, air conditioning, and 235/85R16 tires. In good condition with very good tires.

1999 FORD Model F-350XL Super Duty Utility Truck, Powerstroke 7.3 liter diesel and automatic trans, Reading 9' utility body with ladder rack, Honda 3500 watt gas powered generator, 5.5HP portable gas powered air compressor, tow package, dual rear tires, air conditioning. In good condition with good tires.

(24) PICKUP TRUCKS

(3) 2005 FORD Model F-250XLT Super Duty, 4x4 Quad Cab Pickup Trucks, Powerstroke V-8 Turbo diesel and automatic trans, 8' bed, cross toolbox, air conditioning, and 265/70R17 tires. In good condition with good tires.



(2) of (3) 05 Ford F-250XL 4x4 Diesels

(2) 2004 FORD Model F-250XLT Super Duty, 4x4 Quad Cab Pickup Trucks, Powerstroke V-8 Turbo diesel and automatic trans, 8' bed, cross toolbox, air conditioning, and 265/70R17 tires. In good condition with good tires.

2004 FORD Model F-250XL Super Duty 4x4 Quad Cab Pickup Truck, Triton 5.4 liter V-8 gas and automatic trans, 8' bed with cross toolbox, and 235/85R16 tires. In good condition with good tires.

SWEEPER AND SEWER JETTER TRUCKS

2002 ELGIN Model FL42H Mobile Sweeper, s/n Unknown, Cat 3126, 230HP diesel and automatic trans, 5' rear center broom, (2) 32" gutter brooms, dump hopper, water system with front, side, and rear spray, mounted on 2001 Freightliner Model FL70 Single Axle Carrier, dual operator stations, air brakes, air conditioning, and cruise control. In good condition with fair to good tires.



02 Elgin FL42H on 01 Freightliner FL70

1987 FORD Model F-800, 4x4, Sewer Jetter Truck, Ford 6 cylinder, 210HP diesel and 5 speed trans, vactor body Ford 6 cylinder gas, water tanks, hydraulic dumping hopper, hydraulic positioning boom, front hydraulic reel, air brakes, dual rear wheels, and 11.00R20 tires. In good condition with good tires.



87 Ford F-800 4x4 Sewer Jetter

FLATBED AND STAKE BODY TRUCKS

2006 KENWORTH Model T300 Single Axle Flatbed Truck, Cat C-7, 300HP diesel and Allison automatic trans, 18'6" flatbed with bulkhead and stake pockets, 23,000# rear, air brakes, snowplow package, air brakes, tow package with air, spring suspension, air conditioning, cruise control, power windows, 11R22.5 tires, and 33,000# GVWR. In good condition with good tires.



06 Kenworth T300

1989 GMC Model 7000 Top Kick Single Axle Flatbed Truck, Cat 3208, 250HP diesel (remanufactured) and automatic trans, 18' flatbed with bulkhead and ratchet straps, 21,200# rears, snowplow package, tow package with air, air brakes, 11R22.5 tires, and 30,200# GVWR. In good condition with fair to good tires.

2003 FORD Model F-350XL Super Duty, 4x4 Masonry Flatbed Truck, Powerstroke V-8 Turbo diesel and automatic trans, 10' flatbed with 18" steel stake sides, headache rack, 100 gallon water tank, dual rear wheels, tow package with electric, air conditioning, and 285/85R16 tires. In good condition with good tires.



03 Ford F-350XL 4x4 Masonry

1990 FORD Model F-350, 4x4 Flatbed Truck, International 7.3 liter diesel and automatic trans, 9' flatbed with 17" stake sides, tow package with electric, dual rear wheels, and LT235/85R16 tires. In fair to good condition with fair to good tires.

1995 CHEVROLET Model 3500, 4x4 Stake Body Truck, Turbo diesel and 5 speed trans, 12' flatbed body, 24" stake sides, dual rear wheels, air conditioning, and 235/85R16 tires. In fair condition with fair tires.

2003 FORD Model F-250 Super Duty, 4x2 Pickup Truck, Triton 5.4 liter V-8 gas and automatic trans, 8' bed. In good condition with good tires.

2002 FORD Model F-250XL Super Duty, 4x4 Quad Cab Pickup Truck, Triton 5.4 liter V-8 gas and automatic trans, 8' bed, JoBox Diamond plate cross toolbox, air conditioning, cruise control, and 235/85R16 tires. In good condition with fair to good tires.

2002 FORD Model F-150XLT, 4x4 Quad Cab Pickup Truck, Triton V-8 gas and automatic trans, 6'6" bed, cross toolbox, air conditioning, cruise control, power windows, door locks, and mirrors, and 235/70R16 tires. In good condition with good tires.

(2) 2001 FORD Model F-250XL Super Duty, 4x4 Quad Cab Pickup Truck, Triton 5.4 liter, V-8 gas and automatic trans, 8' bed, cross toolbox, air conditioning, and LT235/85R16 tires. In good condition with good tires.

(24) PICKUP TRUCKS (CONT.)

2000 FORD Model F-250XL Super Duty, 4x4 Quad Cab Pickup Truck, Triton 5.4 liter, V-8 gas and automatic trans, 7' bed and air conditioning. In good condition.

(3) 1999 FORD Model F250XL Super Duty, 4x4 Quad Cab Pickup Truck, Triton 5.4 liter V-8 gas and automatic trans, 8' bed, fuel tank with 12 volt pump, cross toolbox, air conditioning, and LT235/85R16 tires. In good condition with fair tires.

1997 DODGE Model Ram 2500 Laramie SLT, 4x4 Extended Cab Pickup Truck, Magnum V-8 gas and automatic trans, 6'6" bed, air conditioning, cruise control, power windows and locks, and 265/75R16 tires. In fair condition with fair tires.

1989 FORD Model F-250 Pickup Truck, Powerstroke 7.3 liter diesel and automatic trans, 8' bed with electric lift gate, air conditioning, cruise control, and 235/85R16 tires. In fair condition with fair tires.

(6) SPORT UTILITY VEHICLES

2003 CHEVROLET Tahoe LT, 4x4 Sport Utility Vehicle, V-8 gas and automatic trans, full power package, leather interior, and P265/70R17 tires. In good condition with good tires.

(2) 2003 CHEVROLET Tahoe, 4x4 Sport Utility Vehicles, V-8 gas and automatic trans, full power package, cloth interior, and P265/70R17 tires. In good condition with good tires.

2003 FORD Model Explorer LT, 4x4 Sport Utility Vehicle, 4.6 liter V-8 gas and automatic trans, full power package. In good condition with good tires.

2000 FORD Model Explorer XLT, 4x4 Sport Utility Vehicle, 4.0 liter gas and automatic trans, full power package, keyless entry, leather interior, and alloy wheels. In fair condition with fair tires.

1999 FORD Model Expedition XLT, 4x4 Sport Utility Vehicle, Triton 4.6 liter, V-8 gas and automatic trans, full power package, leather interior, keyless entry, and 265/70R17 tires. In good condition with fair to good tires.

1999 FORD Model Escort Wagon, 4 cylinder gas and automatic trans. In good condition with good tires.



(2) of (3) 03 Chevy Tahoe 4x4

TAG-A-LONG, CARGO, AND MISCELLANEOUS TRAILERS

1985 JERSEY 10 Ton Tandem Axle Tag-A-Long Trailer, 17'x8' load deck, 5' beavertail and ramps, air brakes, chain dogs, and 8.25R15 tires. In good condition with good tires.

1986 JERSEY 10 Ton Tandem Axle Tag-A-Long Trailer, 8'x17' load deck, 5' beavertail with ramps, air brakes, and 8.25R15 tires. In fair to good condition.

1987 JERSEY 10 Ton Tandem Axle Tag-A-Long Trailer, 8'x17' load deck, 5' beavertail with ramps, air brakes, and 8.25R15 tires. In fair to good condition.

2000 CARMATE Enclosed Cargo Trailer

1995 PACE Model L818TA2, 8'x18' Tandem Axle Enclosed Cargo Trailer, 7,000# GVWR. In fair to good condition with fair to good tires.

14'x6' Shopmade Tandem Axle Tag-A-Long Trailer, 8x14.5 tires. In fair to good condition.

FLATBED, OFFICE, AND VAN STORAGE TRAILERS

10'x45' Tandem Axle Office Trailer • (9) 40' Tandem Axle Van Storage Trailers • (2) 40' Tandem Axle Flatbed Trailers

WELL POINT AND PORTABLE PUMPS



(4) Hydro-Vac 8 and 6 Inch Well Point Pumps

(3) HYDRO-VAC Model HV1500D, 8" Well Point Pumps, s/n's 1007; 1008; 1002, Deutz diesel. In good condition.

HYDRO-VAC 6" Well Point Pump, s/n Unknown, Deutz diesel, Gorman Rupp pump. In good condition.

2003 GODWIN Model CD100, 4" Portable Dri-Prime Centrifugal Pump, s/n 0332771-15, John Deere 34HP diesel, trailer mounted with 175/80D13 tires. In good condition with good tires.

TSURUMI 6" Portable Pump, s/n 6HT-793, Deutz diesel. In good condition.

GLOBAL PUMP CO. Model 6-TAP-J4-T, 6" Portable Pump, s/n 9943702, John Deere 4.5 liter diesel. In good condition.



03 Godwin CD100 4 Inch Dri-Prime

SURVEY EQUIPMENT

TOPCON Hiper Lite+ GPS System, (2) receivers, base unit s/n 295-1345 and rover unit s/n 295-1339 • **RECON Data Collector**, s/n FS37A18408 • **TOPCON Model GTS-312 Electronic Total Station**, s/n NX1256 •

(5) **PENTAX Model AL-240 Automatic Levels** • Transit, with grade poles and tri-pods • **AGL 400 Rotary Laser Level** • **BERGER 24X Level**

ROAD PLATE

Road Plate: (7) 8'x20'x3/4"-1" • (1) 8'x10'x3/4" • (3) 10'x20'x3/4"-1" • (1) 6'x8'x3/4"-1" • (1) 6'x10'x1" • (1) 7'x12'x3/4" • (1) 8'x12'x1" • (4) 8'x12'x3/4" • (4) 8'x8'x3/4"-1"

TRENCH BOXES, MANHOLE BOX, AND PILING

Trench Boxes: (2) 8'x20'x4" • (1) 4'x25'x6" • (2) 8'x20'x8" Bolt Together • (1) 8'x16'x4" • (1) 8'x20'x6" • (1) 12'x8' Manhole Box • Assorted Spreaders • (2) Gravel Boxes • various lengths of Z & H Piling

CONTRACTORS MATERIAL AND MISCELLANEOUS ATTACHMENTS

Ductile Iron Fittings: Gate Valves • Elbows • Ts • Rings & Caps • Gaskets • Megalugs • 6" Ductile Iron Pipe • 15"-24" Black Corrugated Pipe • 4" and 6" Drain Tile • PVC pipe and fittings • Concrete Pipe • Road Signs & Barricades • (2) **GAR-BRO Round Concrete Buckets**