

CRAWLER JAW CRUSHER



'98 PARKER CRAWLER JAW crusher, 40"x36" stationary discharge conveyor, remote control, 15' crawlers, and 20" TBG pads. In good condition with good to very good undercarriage. (New Jaw Dies) (Purchased New)

1998 PARKER Model RT1163DH Crawler Jaw Crusher, s/n X11325, powered by Cat 3306 diesel engine and hydraulic drive, equipped with 14'x8' hydraulic vibrating feed hopper, 3'6"x5' hydraulic grizzly, 43"x25" jaw

PORTABLE SCREENING PLANT

1992 SCREEN MACHINE Portable Screening Plant, s/n 45D46-3-9B382, powered by Deutz 3 cylinder diesel engine, equipped with 10'x5' feed hopper with manual raise and lower grizzly, 24"x8' bottom feed conveyor, 24"x approx. 35' hydraulic folding feed conveyor with hydraulic raise and lower, 4'x6' double deck vibrating screen, 8' discharge roll-off chute, and 8.50-16.5 tires. In good condition with good tires. (Purchased New)



'92 SCREEN MACHINE

CRUSHERS AND SCREENS

SYMONS Model 33782990, 4' Cone Crusher, s/n 40826, powered by Weg 120HP, 3-phase electric motor. In good condition. (New Cone and Manganese Spring 2005)

CEDARAPIDS 22"x36" Jaw Crusher. In fair to good condition.

CATERPILLAR D339 Diesel Power Unit. In fair to good condition.

CEDARAPIDS 10"x36" Jaw Crusher, s/n 16842. In fair condition.

1994 SIMPLICITY 4'x8' Single Deck Vibratory Screen, s/n 148-7595-4008, powered by Lincoln 15HP electric motor, equipped with 2" screen. In good condition. (Purchased New)

SECO Model 2512, 5'x12' Double Deck Vibratory Screen, powered by Baldor 20HP, 3-phase electric motor. In good condition.

SIMPLICITY Model BG, 4'x12' Double Deck Vibratory Screen, s/n 2412-BG-2066, powered by approx. 20HP, 3-phase electric motor, equipped with approx. 7/16" top screen and approx. 1/8" bottom screen. In fair condition.

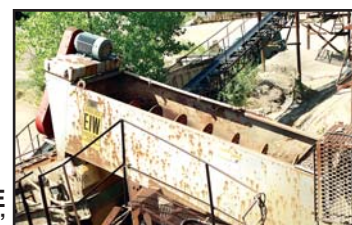
DEISTER 2'6"x4' Single Deck Shaker Screen, powered by Baldor 5HP, 3-phase electric motor. In fair to good condition.

DEISTER 5'x10' Double Deck Vibratory Screen, s/n 348354. In fair to good condition. (Missing Motor)

SIMPLICITY 4'x8' Single Deck Vibratory Screen, powered by approx. 10HP, 3-phase electric motor. In fair to poor condition.

Small Quantity of Miscellaneous Stone, Gravel and Sand Screen

SAND CLASSIFYING EQUIPMENT



FEEDERS, RADIAL STACKERS, AND CONVEYORS



RADIAL STACKER

HOOVER WELDING 10'x16' Vibratory Belt Feeder Hopper, s/n UNKNOWN, powered by Worldwide 3-phase 20HP electric motor, equipped with 30"x approx. 20' bottom feed conveyor. In good condition. (Purchased New)

GRASAN 24"x85' Radial Stacker, powered by approx. 20HP, 3-phase electric motor and Dodge gear reducer, equipped with fixed wheel assembly and 10.00-20 tires. In good condition.

HOOVER 24"x50' Radial Stacker, s/n 0197-1017, powered by Lincoln 10HP, 3-phase electric motor and Dodge gear reducer, equipped with manual raise and lower and 235/85R16 tires. In good condition with fair tires.

HEWITT ROBINS 24"x50' Radial Stacker, powered by G.E. 15HP, 3-phase electric motor and gear reducer, equipped with manual/hydraulic raise and lower, magnetic head pulley, and 7.50-20 tires. In fair to good condition with poor tires.

GRASAN 24"x80' Radial Stacker, powered by Lincoln 20HP, 3-phase electric motor and Dodge gear reducer, equipped with manual raise and lower and 10.00-2 tires. In fair condition with fair tires.

24"x80' Radial Stacker, powered by 10HP, 3-phase electric motor and Dodge gear reducer, equipped with shop made wheel assembly. In fair condition.

24"x150' Channel Type Feed Conveyor, powered by Lincoln 30HP electric motor and Dodge gear reducer. In good condition.



PLANT OVERVIEW



PLANT OVERVIEW

24"x150' Lattice Frame Discharge Conveyor, powered by Sterling 15HP, 3-phase electric motor and Dodge gear reducer, equipped with catwalk. In fair to good condition.

18"x150' Lattice Frame Discharge Conveyor, powered by 10HP, 3-phase electric motor and gear reducer. In fair to good condition.

GRASAN 30"x80' Lattice Feed Conveyor, powered by Lincoln 15HP, 3-phase electric motor and Dodge gear reducer. In fair to good condition.

GRASAN 24"x90' Lattice Frame Discharge Conveyor, powered by US Electric 15HP, 3-phase electric motor and Dodge gear reducer. In good condition.

GRASAN 24"x75' Lattice Type Return Conveyor, powered by 15HP, 3-phase electric motor and Dodge gear reducer. In fair to good condition.

18"x70' Lattice Frame Discharge Conveyor, powered by Weg 10HP, 3-phase electric motor and Dodge gear reducer. In fair to good condition.

30"x50' Channel Type Discharge Conveyor, powered by Magnatech 5HP electric motor and Dodge gear reducer. In fair to good condition.

shop made 18"x30' Discharge Conveyor, powered by Baldor 7.5HP, 3-phase electric motor and Falk gear reducer. In good condition.

PEERLESS 24"x60' Conveyor, powered by G.E. 15HP, 3-phase electric motor. In fair to poor condition. (No Belt Or Gear Reducer)

Miscellaneous Conveyors and Conveyor Parts



1440 Cowpath Rd. • Hatfield, PA 19440 • 800-233-6898 • Fax: 215-361-9212

NOTICE: After (58) successful years in the excavation, sand, gravel, and trucking business, Mr. Howard Sargent has decided to completely liquidate and pursue other interests. Everything in the auction is owned by Solon Excavators Sand & Gravel, Inc. and will positively sell to the highest bidder regardless of price!

SPECIAL NOTE: Mr. Sargent has agreed to dismantle the plant components and load them out at no charge to the purchaser. Please consider this value added service.

LOCATION: The auction will be conducted at Solon's office, shop and yard facility located at 10925 Mantua Center Road, Mantua, OH 44255

TERMS: Payment in full is required on sale day by cash, certified funds, or check with a bank letter of guarantee. Sample letter of guarantee: "We hereby guarantee the payment of our customer _____ written on his account up to _____ dollars for purchases at your auction sale on September 13, 2006." All guaranteed checks should be made payable to Hunyady Auction Co.

INSPECTION: Items will be available for inspection one week prior to the auction from 8:00 a.m. until 5:00 p.m. (with the exception of Saturday, Sept. 9 and Sunday, Sept. 10, at which time the site will be closed) or sale day morning from 7:00 a.m.

REMOVAL: After complete payment, all sale items may be removed on sale day as long as the removal activity is not disruptive to the sale and only until 5:00 p.m. Items may also be removed Thursday, September 14, Friday, September 15 and Monday, September 18 thru Thursday, September 21, from 8:00 a.m. until 5:00 p.m. All items must be removed no later than Thursday, September 21 at 5:00 p.m.

SALE SITE DIRECTIONS: TRAVELING EAST OR WEST ON INTERSTATE 80/OHIO TURNPIKE: Exit #193 (Route 44/Ravenna) After toll booth proceed to stop sign and turn left onto Route 44 North. Continue on Route 44 North (2.5) miles to traffic light (In Mantua) and turn left onto High Street (which turns into Mennonite Road). Proceed (1) mile and turn right onto Mantua Center Road, continue (2/10) mile to sale sight on left.

AIRPORT INFORMATION: The area is serviced commercially and privately through Akron Fulton International Airport and Cleveland Hopkins International Airport. Rental cars are available.

MOTEL INFORMATION: (All Hotels Off Exit #187 in Streetsboro) Hampton Inn and Suites (330) 422-0500 (Auction Headquarters) • Holiday Inn Express (330) 422-1888 • Fairfield Inn (330) 422-1166 • Wingate Inn (330) 422-9900 • TownePlace Suites (330) 422-1855 • Econo Lodge (330) 626-5511

OH AUCTION LICENSE NO: 63199773959

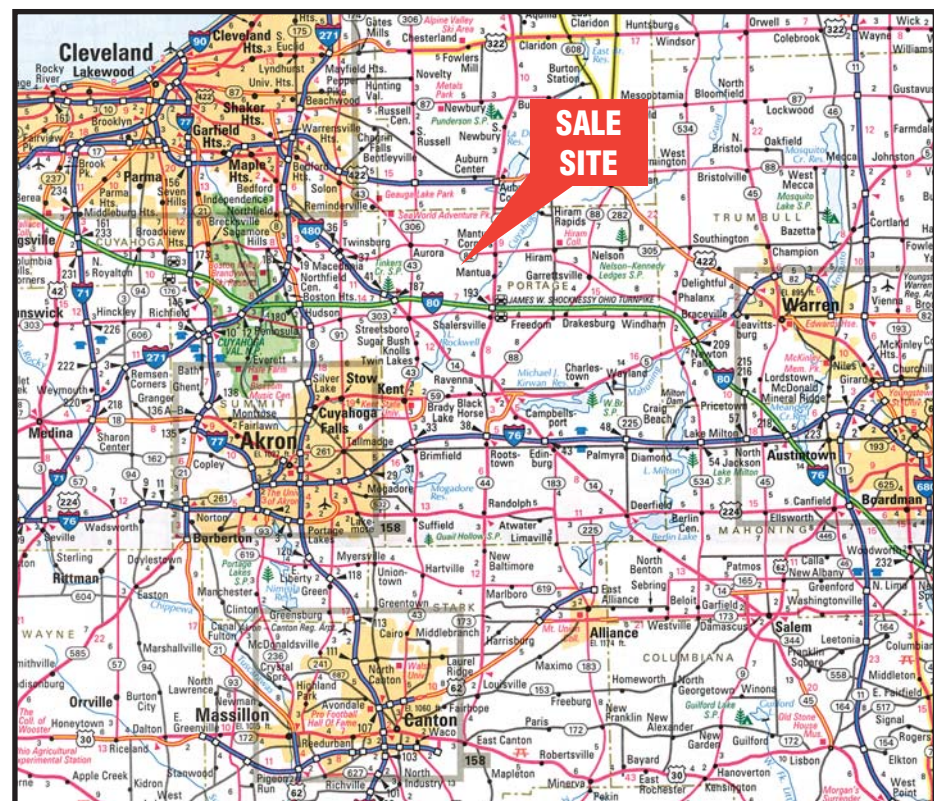
SALE SITE PHONE: (330) 274-8241 • SALE SITE FAX: (330) 274-3434

SHOP TOOLS

CATERPILLAR 50 Ton Hydraulic Puller/Press with all accessories • **2004 KARCHER HDS2245N2/LP Steam Pressure Washer**, 2,250 PSI, 322,000 BTU burner (Purchased New) • **1989 L-TEC V1-300, 3-Phase Electric Welding & Cutting System**, s/n C89A-09019, Mig 35 wire feed • **MILWAUKEE 3/4" Magnetic Drill** • **CAROLINA HD10 Electric Horizontal Band Saw** • **GOODALL 850, 6/12 Volt Battery Charger** • **MILWAUKEE Electric Chop Saw** • **US ELECTRIC 1HP, 3-Phase Dual Pedestal Grinder** • **Steel Work Bench with PNE riveter** • **PORTER-CABLE 737 Saws All** • **NAPA 2.5 Ton Hydraulic Floor Jack** • (6) Jack Stands • **SOUTHBEND Belt Driven Electric Drill Press** • (2) Torch Sets • (2) RIGID Pipe Wrenches • (2) CP 1" Impact Guns • Assorted Miscellaneous Hand Tools and Sockets • (2) Porta Powers • Pneumatic Luber • **MILWAUKEE Angle Grinder** • Small Quantity of PNE Impact Tools • (6) Hydraulic Bottle Jacks • **PROTO Rolling Toolbox with contents** • (2) Chain Come-Alongs • (2) Steel Tables with vises • **STEMCO Seal & Bearing Drivers** • Set of Wheel Nut Sockets • Approx. 25 Ton Pneumatic Floor Jack • Bolt Bins and contents • Parts Drawers and contents • (4) Manual Lubers • Parts Washer • **BOSCH 1/2" Cordless Drill** • **DRYWALL Shop Vac** • 100 Ton Hydraulic Jack • 24' Fiberglass Ladder

PARTS AND ACCESSORIES & OFFICE FURNITURE

MACK Parts, including fuel gauges, air dryers, Stemco seals and rings, brake kits, brake cam shafts, wheel caps, brake shoes, speed odometer cables, clamps, bearings, hydraulic pumps, fan belts, alternators, starters, air bags, brake chambers, brake drums, and lift axle shocks • (2) D9G Engines for parts • Small Quantity of Miscellaneous Hydraulic Hoses • Miscellaneous Truck & Equipment Filters • Miscellaneous Plant Parts, including bearings, gaskets, seals, and wipers • 2-Way Radios and 100' antenna tower • Miscellaneous Truck Tires • (3) Truck Van Storage Units • Small Quantity of Miscellaneous Bucket Teeth, Wire Rope, and Dragline Parts, including fairlead links, buckets/wedges • (2) 23.5-25 Recapped Loader Tires • (2) 550 Gallon Fuel Tanks • Approx. 300 Gallon Fuel Tank with manual pump • Approx. 2000' of 6' Galvanized Cyclone Fencing. In fair condition. • Large Quantity of Concrete Dead Men • **XEROX Copier** • Approx. (6) Filing Cabinets • Desks



ABSOLUTE AUCTION

COMPLETE LIQUIDATION

Wednesday, September 13, 2006 - 9:00AM

Solon Excavators Sand & Gravel, Inc.

Mantua, Ohio (Cleveland/Akron Area)

1440 COWPATH RD. • HATFIELD, PA 19440
215/361-9099 • Fax: 215/361-9212



'98 PARKER RT1163DH



'89 CAT D9N



AMERICAN 9260

PRE-SORTED
FIRST CLASS MAIL
US POSTAGE
PAID
HAVERTOWN, PA
PERMIT #45

