

# ABSOLUTE AUCTION

## COMPLETE LIQUIDATION

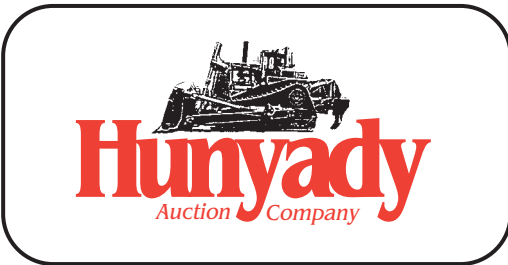
THURSDAY, JULY 6, 2006 - 10:00AM



(2) OF (5) ROUGH TERRAIN FORKLIFTS

**F.L. ROYER  
INCORPORATED**

**Reamstown, Pennsylvania  
(Ephrata/Lancaster Area)**



1440 COWPATH RD. • HATFIELD, PA 19440  
215/361-9099 • Fax: 215/361-9212



'96 CASE 1840



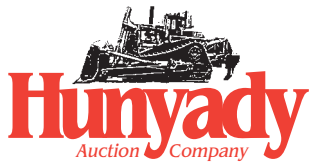
'92 INT'L 4700 SINGLE AXLE



MASON KING ADJUSTABLE  
SCAFFOLDING

PRE-SORTED  
FIRST CLASS MAIL  
US POSTAGE  
**PAID**  
HAVERTOWN, PA  
PERMIT #45





Please visit our website at  
[www.hunyady.com](http://www.hunyady.com)

**F.L. ROYER  
INCORPORATED**

**1440 Cowpath Rd. • Hatfield, PA 19440 • 800/233-6898 • Fax: 215/361-9212**

**ROUGH TERRAIN AND PNEUMATIC TIRED FORKLIFTS**

**2000 INGERSOLL-RAND Model VR642B, 6,700#, 4x4 Telescopic Rough Terrain Forklift**, s/n 165888, Cummins B3.9-C diesel engine, equipped with 30' 3-section boom, 42' fork height, fork rotation, 48" forks, and manual quick disconnect. In good to very good condition. (02,430 Original Hours) (Purchased New)

**1998 GEHL DYNALIFT Model DL-6L40, 6,000#, 4x4 Telescopic Rough Terrain Forklift**, s/n 6L40JP0925259, JD 4045D diesel, equipped with 25' 3-section boom, 40' fork height, fork rotation, 48" forks, manual quick disconnect, and EROPS. In good to very good condition. (02,670 Original Hours) (Purchased New)

**1990 GEHL DYNALIFT Model 663, 6,000#, 4x4 Telescopic Rough Terrain Forklift**, s/n JG024155, JD 4045T diesel engine, equipped with 28' 3-section boom, 37' fork height, fork rotation, 48" block forks, manual quick disconnect, and EROPS. In good condition. (Purchased New)



**(2) LULL 6,000# 4X4**

**LULL Model 644 TT-34 Highlander II, 6,000#, 4x4 Telescopic Rough Terrain Forklift**, s/n JD2728N, JD diesel, equipped with 24' 2-section boom, 34' fork height, fork rotation, and 48" block forks. In good condition.

**LULL Model 644 TT-34 Highlander II, 6,000#, 4x4 Telescopic Rough Terrain Forklift**, s/n JD1678LN, JD diesel, equipped with 24' 2-section boom, 34' fork height, fork rotation, 48" block forks, ROPS canopy, and 13.00x24 tires. In good condition.

**1992 YALE Model GLC040AENUA077, 4,000# Solid Tired Forklift**, s/n N524024, Yale LPG gas, equipped with 3-stage mast, 168" maximum lift height, 42" forks, and FOPS canopy. In good condition.

**CLARK Model 3524, 3,500# Pneumatic Tired Forklift**, s/n PL-762-CM, gas, equipped with 42" forks. In fair condition.

**SKID STEER LOADER**

**1996 CASE Model 1840 Skid Steer Loader**, s/n JAF0186688, Case 4-390 diesel engine, equipped with general purpose loader bucket, and auxiliary hydraulics. In good condition with fair to good tires. (423 Original Hours) (Purchased New)

**ADJUSTABLE SCAFFOLDING SYSTEM,  
UNIVERSAL FRAMES, AND ACCESSORIES**

**1996 MASON KING Scaffolding System**, with with 203' total length and 31.5' max height. Consisting of: (30) 4.5' Base Section Frames • (90) 9' Frame Sections • (60) Leveling Jacks with tossle pins • (120) 3'x7' Cross Braces • (28) 7' Stringer Braces • (30) Hand-Cranks with left and right carriages • PLUS Moderate Quantity of rigging and guardrails • Vanguard 7' tilting scaffold lifting attachment for forklift

(407) **UNIVERSAL 4'6"Hx5'W Ladder Scaffold Frames and Cross Braces** • (244) **UNIVERSAL 6'6"Hx5'W Walk-Thru Scaffold Frames and Cross Braces** • (150) **SBA Side Brackets for 6' frames** • (51) **4'6"Hx5'W Scaffold Frames** • (14) **3"x5" Scaffold Frame Extensions** • Assorted Bases • (310) **10"x16' Wooden Scaffold Planks** • (100) **10"x8' Wooden Scaffold Planks** • **28"x25' Aluminum Pickboard** • **400# Electric Cable Hoist**

**DUMP TRUCK, PICKUP TRUCKS, AND VAN TRAILER**



**'99 CHEVY  
1500**

**1992 INTERNATIONAL Model 4700 Single Axle Mason's Dump Truck**, International DT466 diesel engine and 5 speed transmission, equipped with 13' body with 16" folding sides and 10R22.5 front and 11R22.5 rear tires. In good condition • **1999 CHEVROLET Model 1500 Silverado Pickup Truck**, V-6 gas engine and automatic transmission, equipped with 8' bed, air conditioning, and 235/75R16 tires. In good condition • **1987 CHEVROLET Model Custom Deluxe 20 Pickup Truck**, V-8 gas engine and automatic transmission, equipped with 8' bed, plow frame, and 235/85R16 tires. In fair condition • **Western 7'6" Snow Plow** • **1978 KENTUCKY 40' Van Trailer**. In fair condition.

**BLOCK AND MORTAR EQUIPMENT**

(8) **DURABILT, ESSICK, AND MULLER** Gas Powered Portable Mortar Mixers • (4) **PRIME MOVER Model 15BL, 800# Gas Powered Walk-Behind Forklifts**

**SAWS AND MASONRY EQUIPMENT**

(6) **STIHL TS400 and TS360 Cut-Off Swas** • (5) **CLIPPER and EVERREADY** Masonry Saws • **Acid Brick Mixing Tubs** • **Mortar Tubs** • **Wheelbarrows** • **Miscellaneous Equipment**

**CONTRACTORS TOOLS AND EQUIPMENT**

**HONDA 3500 Watt Generator** • **PACER 2" Pump** • **HOBART 400 Amp Welder** • **TROYBILT GTX16, 48" Riding Mower** • **MAKITA, SKIL, AND MILWAUKEE Saws, Drills, Grinder, and more.**

**SALE SITE PHONE NUMBER: (215) 361-9099 • SALE SITE FAX: (215) 361-9212**

**NOTICE:** After (38) successful years in the masonry business, the owners of F.L. Royer, Inc. have decided to cease operations and pursue other interests. Everything in the auction is owned by F.L. Royer, Inc. and must sell to the highest bidder regardless of price!

**LOCATION:** The auction will be conducted at F.L. Royer's yard facility located at 1160 Ridge Avenue, Reamstown, Pennsylvania 17567

**TERMS:** Payment in full is required on sale day by cash, certified funds, or check with a bank letter of guarantee. Sample letter of guarantee: "We hereby guarantee the payment of our customer \_\_\_\_\_ written on his account up to \_\_\_\_\_ dollars for purchases at your auction sale on July 6, 2006" All guaranteed checks should be made payable to Hunyady Auction Co.

**SALES TAX:** With the exception of the titled vehicles, all items are owned by Lynn Rental Company, a subsidiary of F.L. Royer, Inc., and are therefore subject to Pennsylvania State Sales Tax which will be collected at the rate of 6%

**INSPECTION:** Items will be available for inspection Thursday and Friday, June 29 and 30 and Monday, July 3 and Wednesday, July 5, from 8:00 a.m. until 5:00 p.m. or sale day morning from 8:00 a.m. until 10:00 a.m.

**REMOVAL:** After complete payment, all sale items may be removed on sale day as long as the removal activity is not disruptive to the sale and only until 5:00 p.m. Items may also be removed Friday, July 7 and Monday, July 10 thru Wednesday, July 12, from 8:00 a.m. to 5:00 p.m. All items must be removed no later than Wednesday, July 12 at 5:00 p.m.

**SALE SITE DIRECTIONS:** FROM PENNSYLVANIA TURNPIKE: Exit #286 (Route 222 Reading/Lancaster) After toll, continue straight to 3rd traffic light and turn left onto Route 272 South. Proceed (1.7) miles and turn left onto Church Street (Sunoco Station) Continue (6/10) mile and turn right onto Ridge Avenue and travel (5/10) mile to sale site on right.

**HOTEL INFORMATION:** Holiday Inn (717) 336-7541 • Comfort Inn (717) 336-4649

**PA AUCTION LICENSE NO:** AY000281